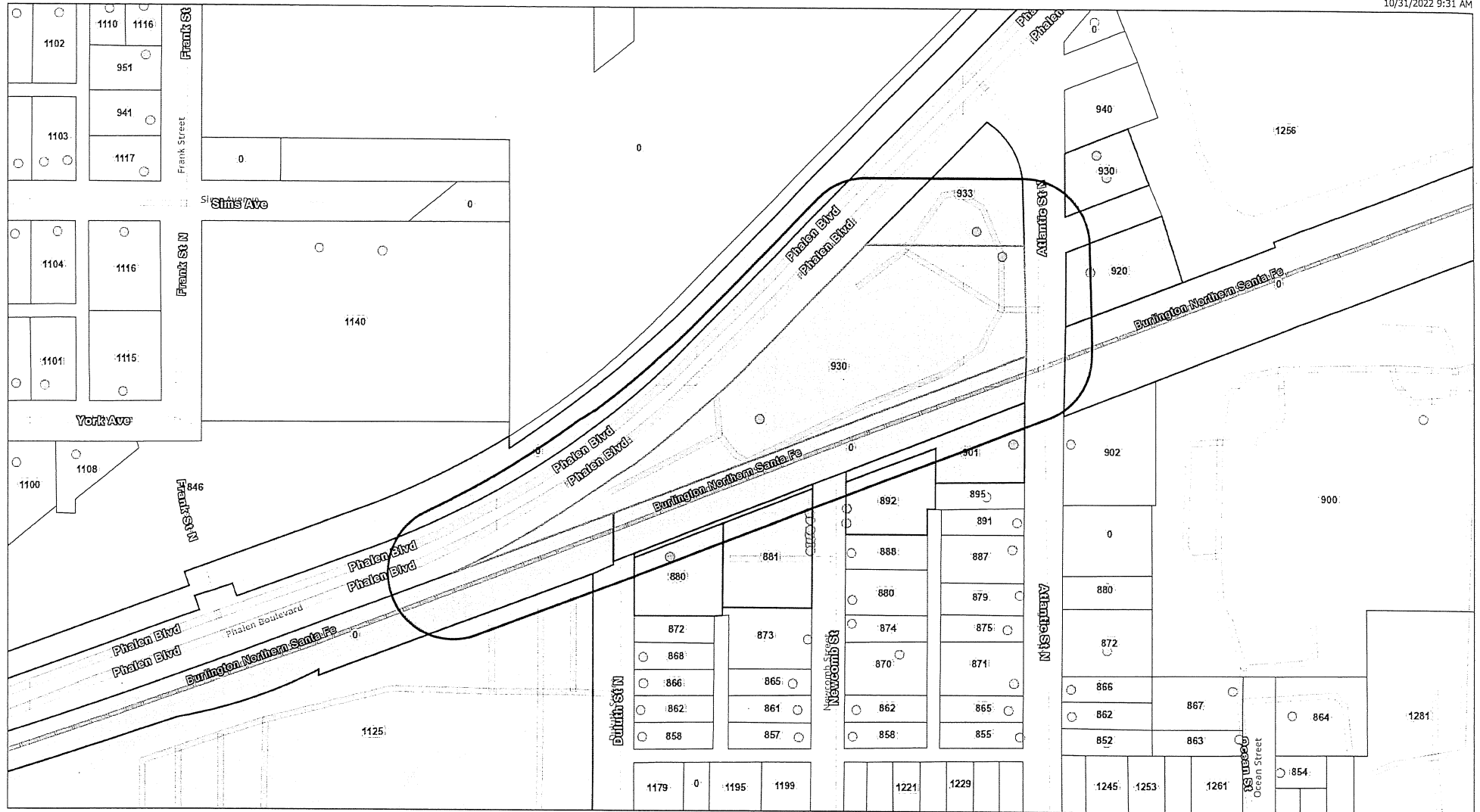


	A	B	C	D
1	CHICAGO MSP OMAHA RR CO	1400 DOUGLAS STOP 1640	OMAHA NE 68179-1640	282922410057
2	CHAMP HOLDINGS LLC	901 ATLANTIC ST	SAINT PAUL MN 55106-3433	282922410078
3	BMC PROPERTY LLC	892 NEWCOMB ST	SAINT PAUL MN 55106-3424	282922410056
4	SANDHILL FLYWAY LLC	PO BOX 413	STILLWATER MN 55082-0413	282922410003
5	ANTHONY ARIAS JACQUELINE A ARIAS	2688 JESSICA CT	LITTLE CANADA MN 55117-1395	282922410004
6	3MC FURNITURE LLC	881 NEWCOMB ST	SAINT PAUL MN 55106-3423	282922410098
7	EAST SEVENTH STREET BUILDING COMPANY LLC	1125 7TH ST E	SAINT PAUL MN 55106-3900	282922420100
8	RAMSEY COUNTY REG RR AUTH	121 7TH PL E STE 2200	SAINT PAUL MN 55101-2146	282922420099
9	RAY ANDERSON AND SONS CO INC	930 DULUTH ST	ST PAUL MN 55106-3418	282922410095
10	RAY ANDERSON AND SONS CO INC	930 DULUTH ST	ST PAUL MN 55106-3418	282922410083
11	CHICAGO NW TRANSPORT CORP	1400 DOUGLAS STOP 1640	OMAHA NE 68179-0002	282922420083
12	UNION PACIFIC RAILROAD COMPANY	1400 DOUGLAS STOP 1640	OMAHA NE 68179-1640	282922410084
13	CHICAGO MSP OMAHA RR CO	1400 DOUGLAS STOP 1640	OMAHA NE 68179-1640	282922410005
14	REMACKEL PROPERTIES LLC	6627 29TH ST N	OAKDALE MN 55128-3801	282922410102

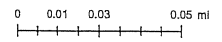
Map

10/31/2022 9:31 AM



Saint Paul Minnesota
The most livable city in America

Sources: Esri, Airbus DS, USGS, NOAA, NASA, CGIAR, H Robinson, NCEAS, FLS, OS, NMA, Geostatstraffen, Rijkswaterstaaf, GSA, Geoland, FEMA, Intermap and the GIS user community, Esri Community Maps



The Geographic Information System (GIS) Data to which this notice is attached are made available pursuant to the Minnesota Government Data Practices Act (Minnesota Statutes Chapter 13). The GIS Data are provided to you "AS IS" and without any warranty as to their performance, merchantability, or fitness for any particular purpose. The GIS Data were developed by the City of Saint Paul for its own internal business purposes. The City of Saint Paul does not represent or warrant that the GIS Data or the data documentation are error-free, complete, current, or accurate. You are responsible for any consequences resulting from your use of the GIS Data or your reliance on the GIS Data. You should consult the data documentation for this particular GIS Data to determine the limitations of the GIS Data and the precision with which the GIS Data may depict distance, direction, location, or other geographic features. If you transmit or provide the GIS Data (or any portion of it) to another user, the GIS Data must include a copy of this disclaimer.