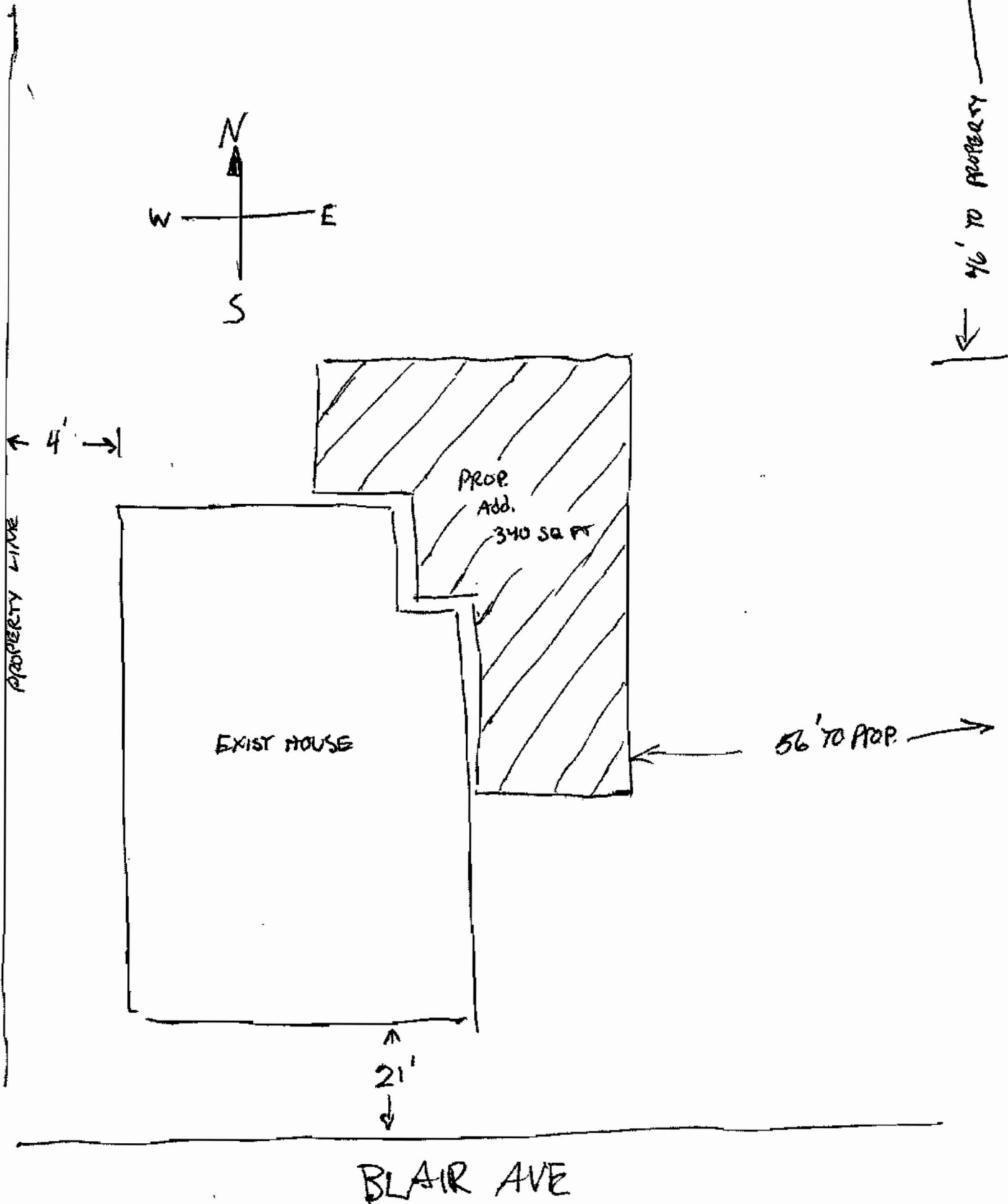


PROPOSED Addition - DETACHED 340 SQ. FT.

FOR

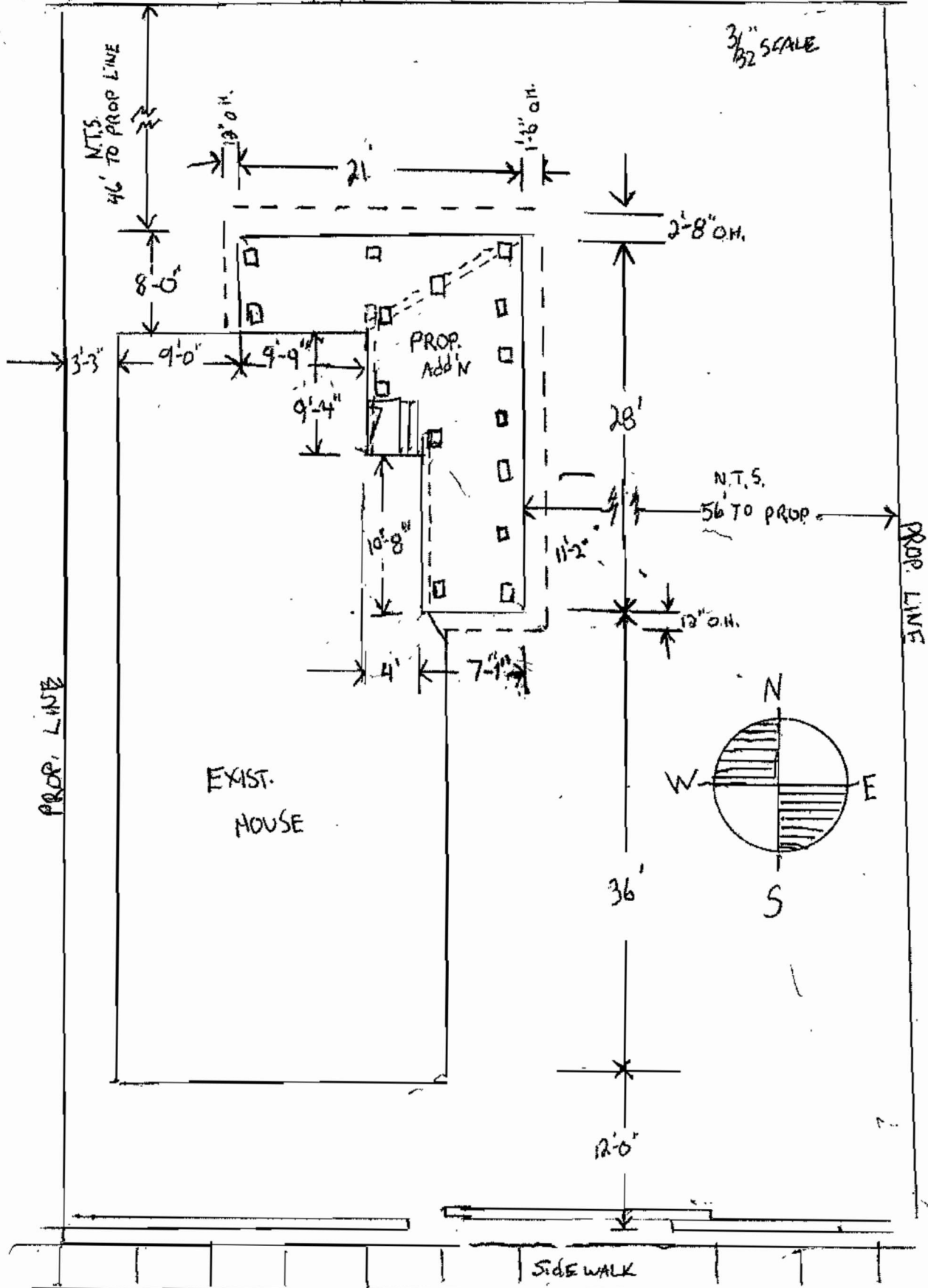
NYAR PWO @ 399 BLAIR AVE. ST. PAUL MN (763)-321-0974

DRAWN BY JIM FEATHERSTONE 651-432-2473



PROP. LINE

3/16" SCALE



PROP. LINE

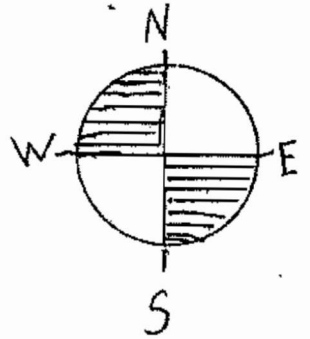
PROP. LINE

EXIST. HOUSE

PROP. ADDN

N.T.S.

56' TO PROP.

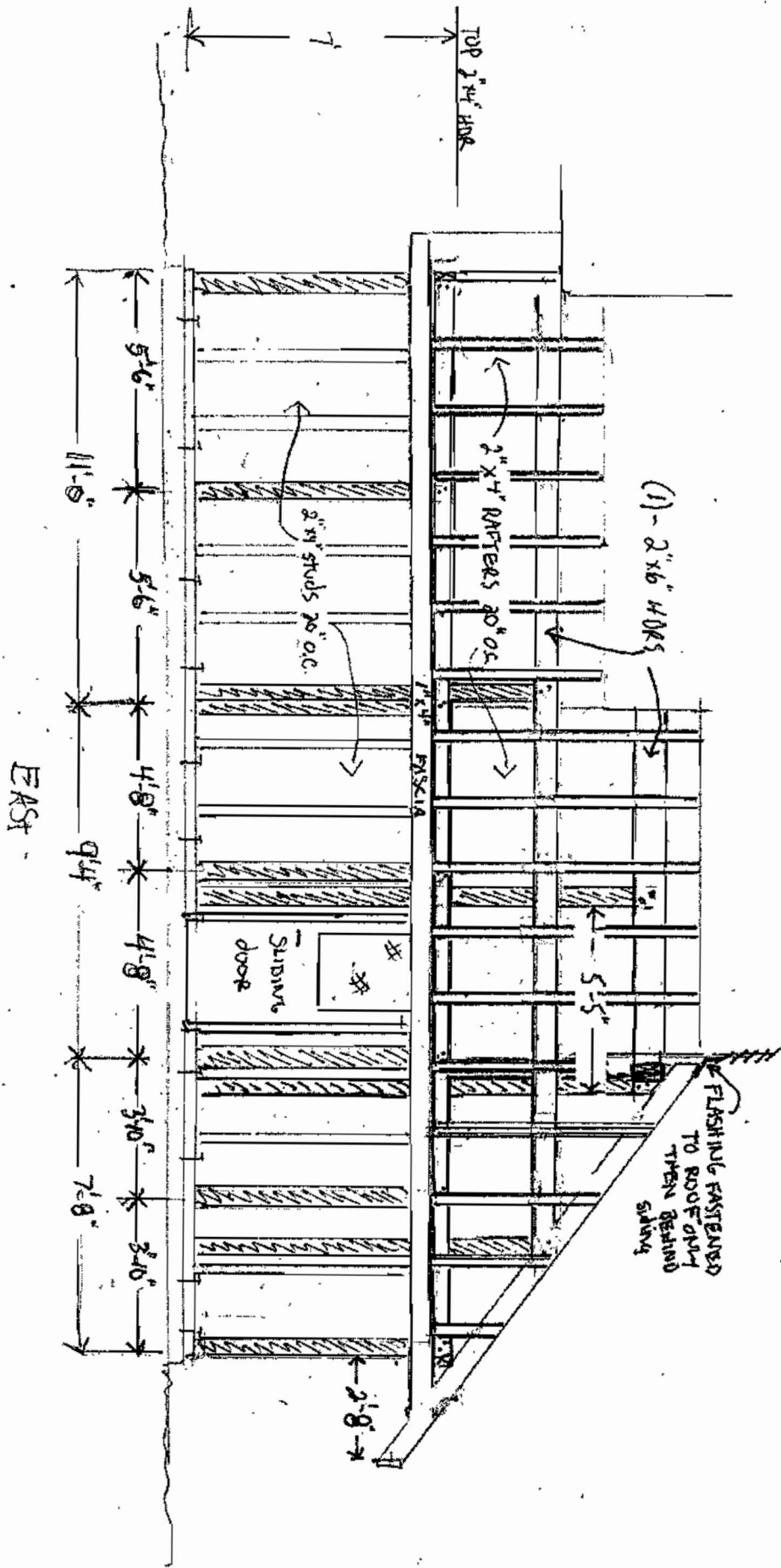


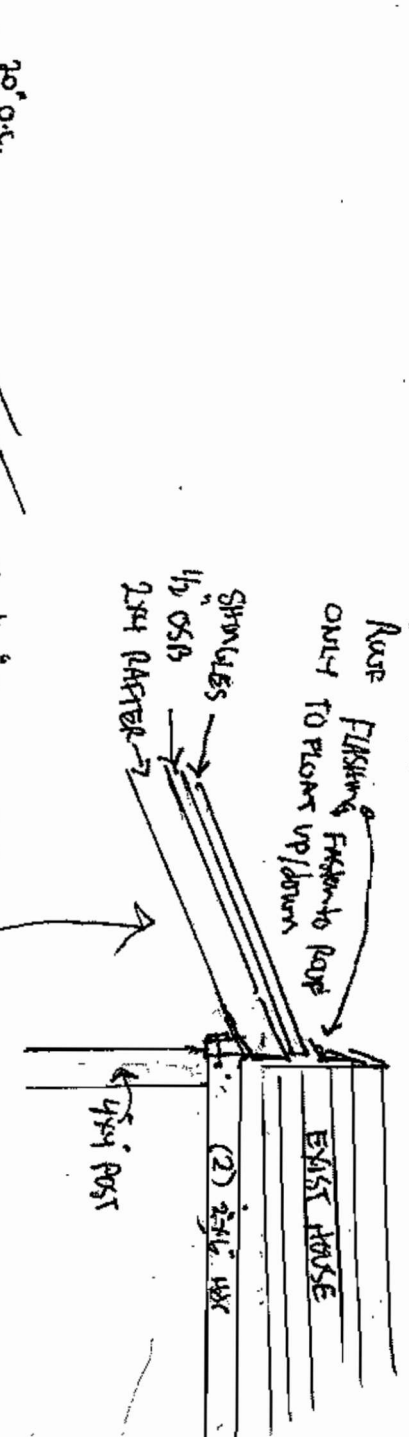
SIDEWALK

BOULEVARD

BLAIR AVE.







20' O.C.
2x4 RAFTERS

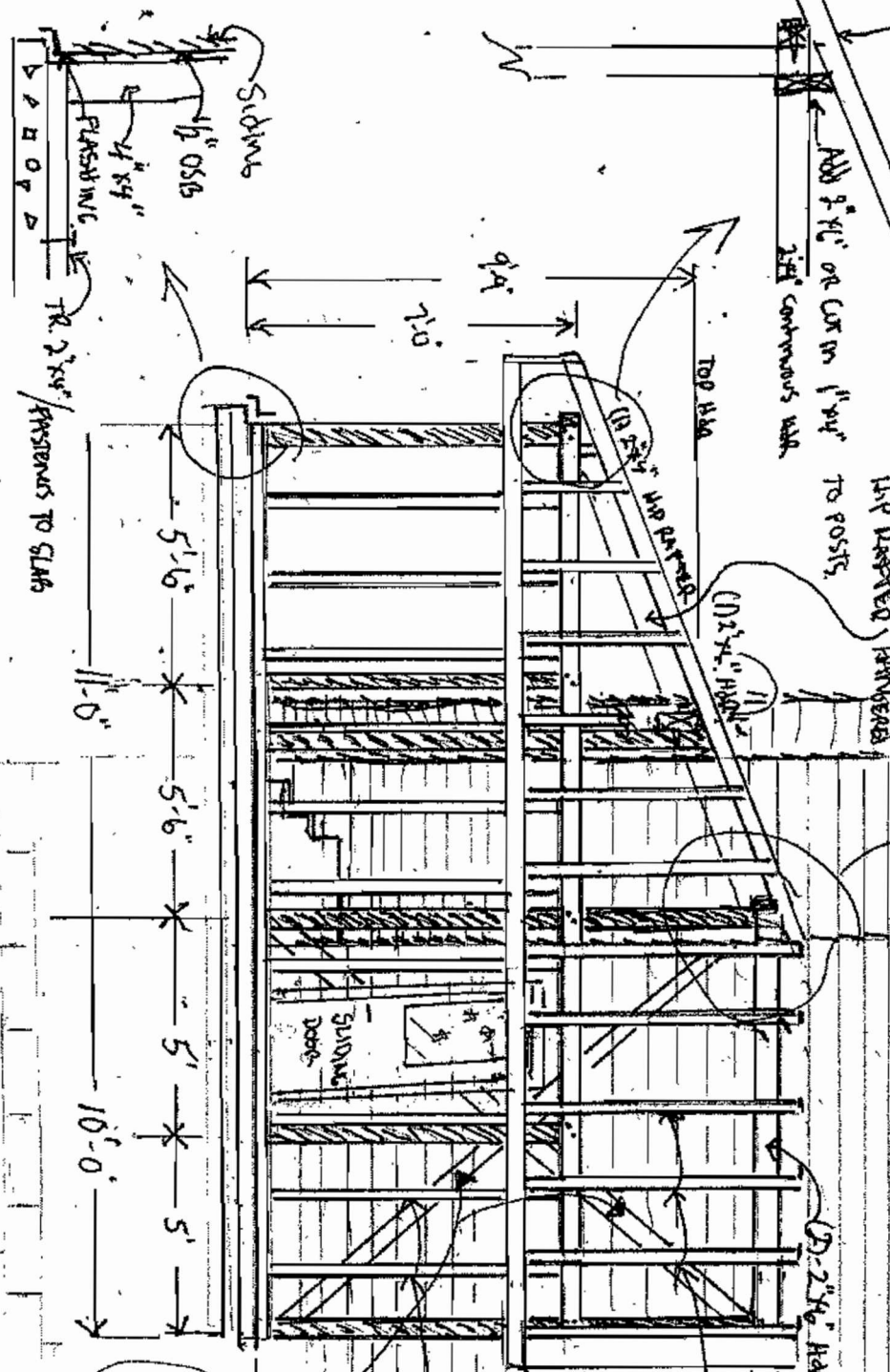
ADD 2"x12" OR CUT IN 1"x12" TO POSTS

ADD 2"x12" BRACKETED 2"x4" 1xP DECKED HANDS

TOP HHA

(1) 2"x4" RAFTERS

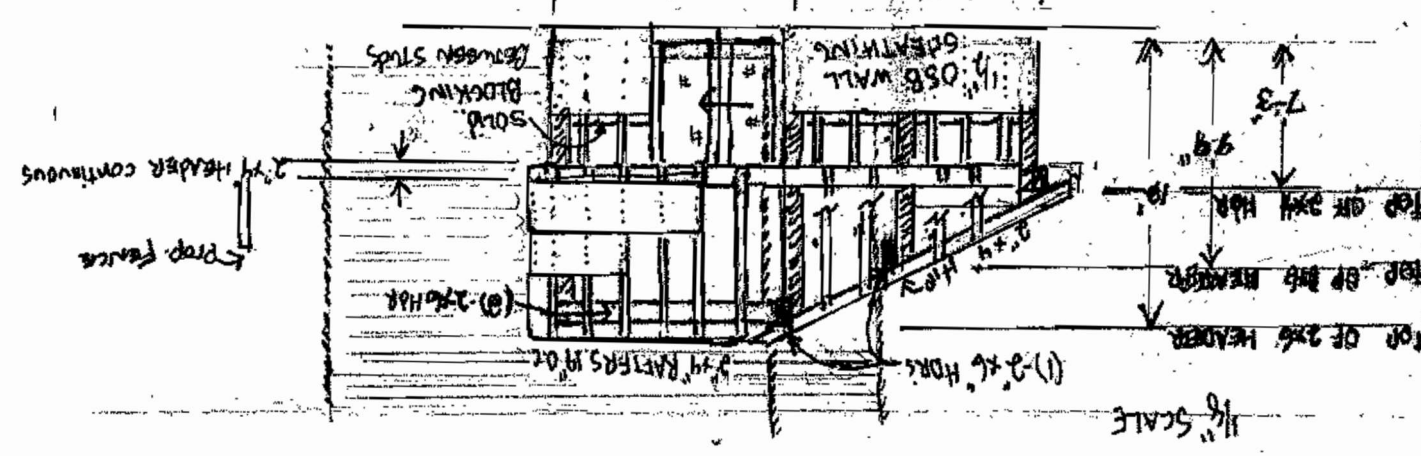
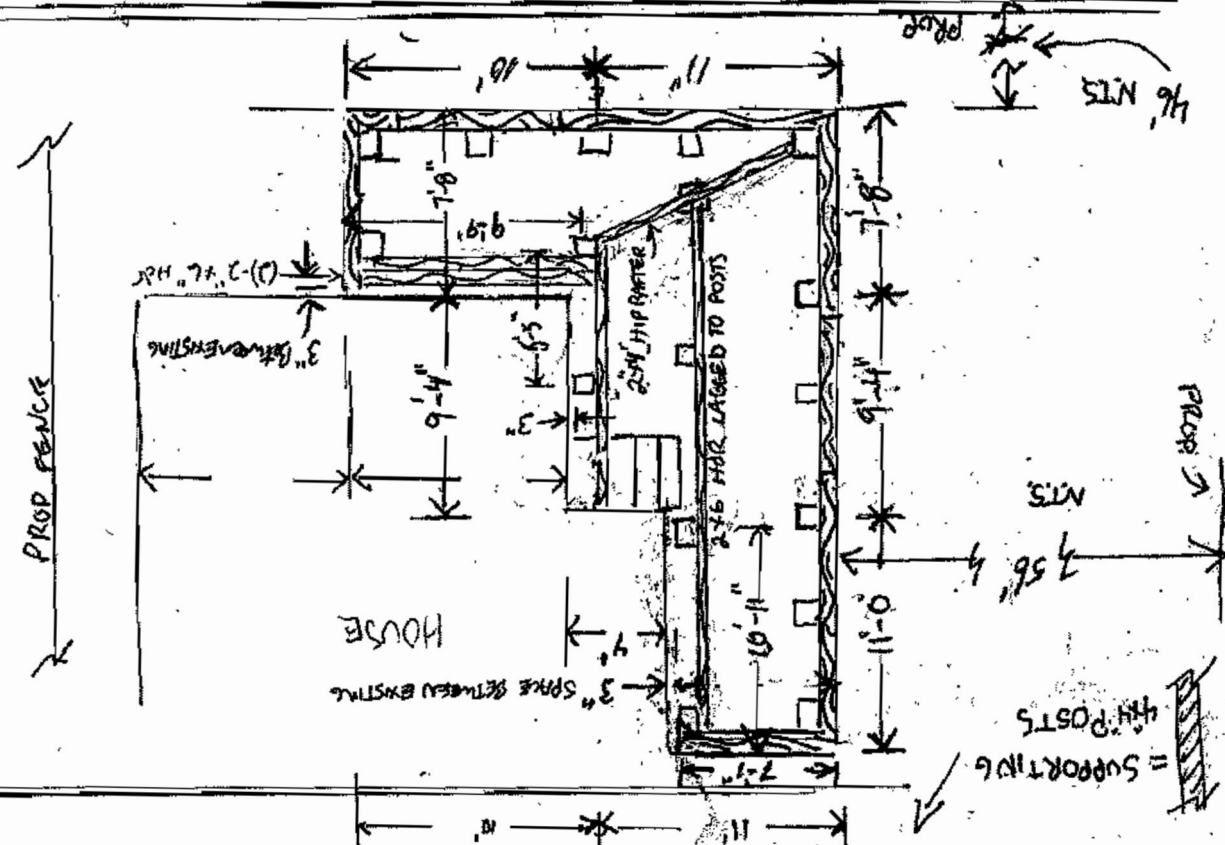
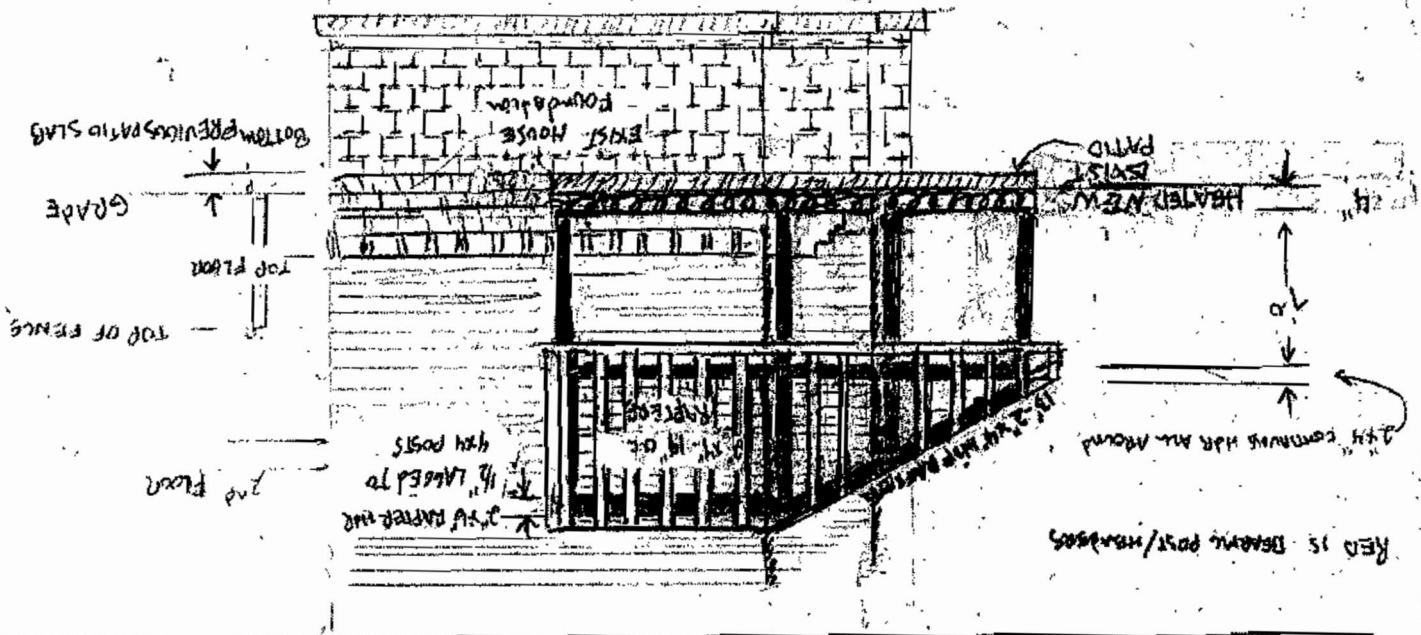
(1) 2"x4" HANDS



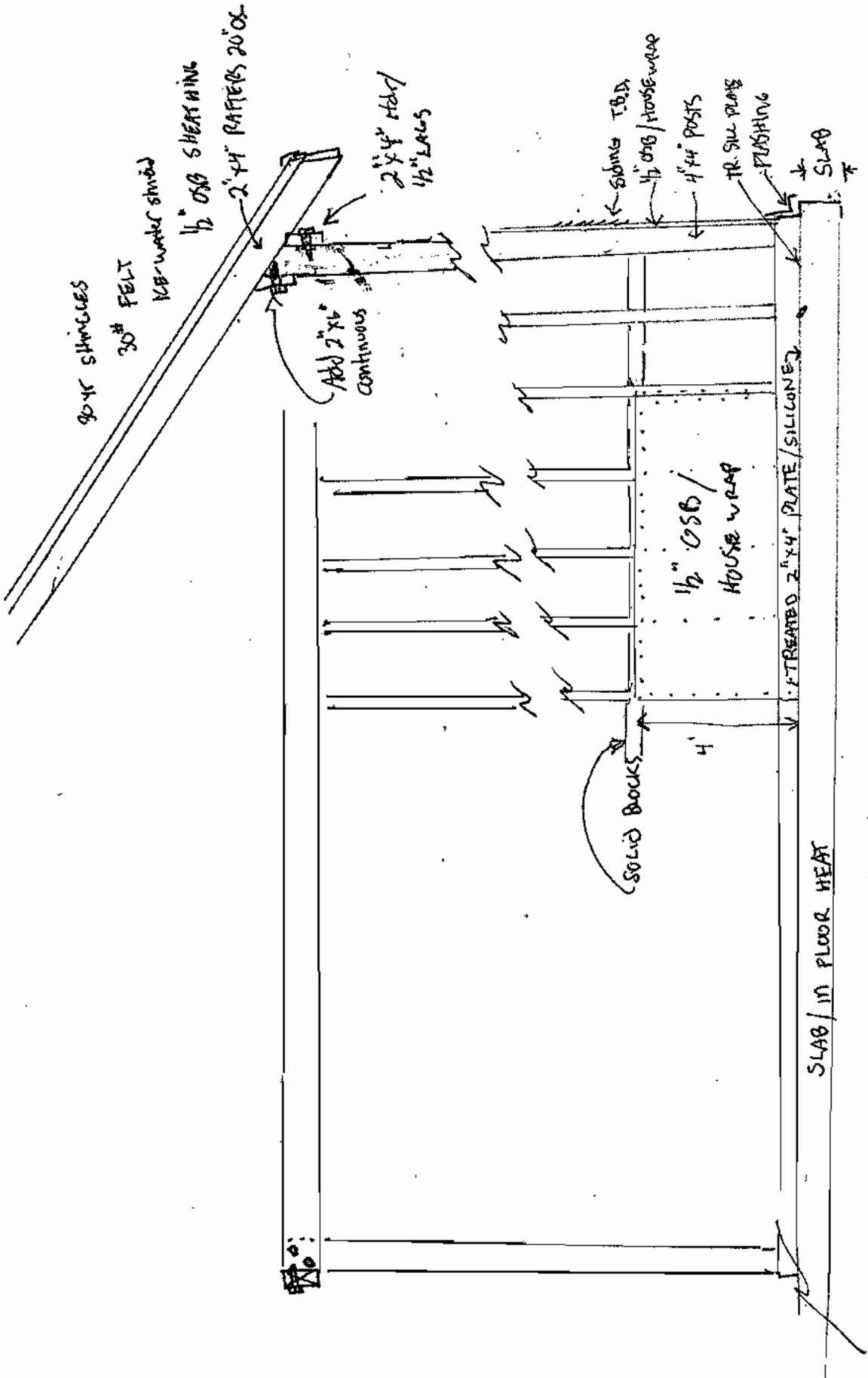
PROVIDE 2"x6" DIMENSION BRACING AT POINTS ADJACENT TO EXIST HOUSE TO ACCOMMODATE WALKER. ADD NAILS NOT PROVIDED TO HOUSE. BOLTED OR EQUIVALENT

NORTH

1/4" = 1'-0"



1/8" SCALE



90°K SHINGLES

30# FELT

1/2" OSB SHEATHING

2"x4" RAFTERS 20'OC

1/2" OSB SHEATHING

ADD 2"x6" CONTINUOUS

2"x4" HATCH / 1/2" LAGS

SOLID BLOCKS

1/2" OSB / HOUSE WRAP

4"x4" POSTS

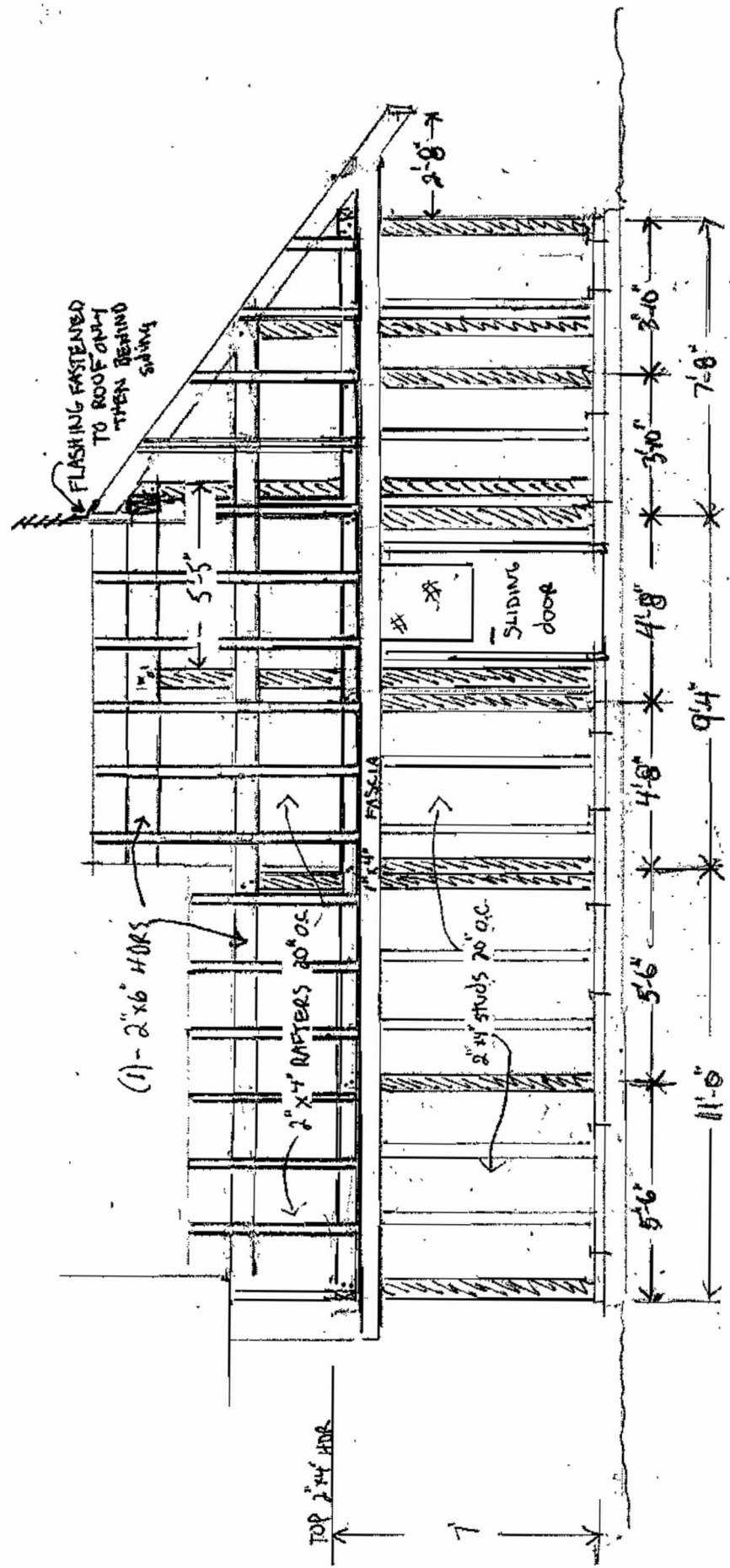
TR. SILL PLATE

FLASHING

1/2" TREATED 2"x4" PLATE / SILICONE

SLAB / IN FLOOR HEAT

SLAB



EAST

SCALE

3/32"

56' TO PROP NTS

46' TO PROP NTS

PROP LINE

PROP LINE

EXIST. HOUSE

366'



SIDE WALK

BLAIR AVE

