

General Manager Report

- Employee Conference
- Intro to Land Review- Request for Questions- Full Presentation in April
- Mississippi River Pump Station Rehabilitation – Funding Request

2025 Employee Conference

Wednesday February 26th at Wellstone Center

Training Topics Included:

Projects Updates: Plant Project, AMI, Lead free, 10-Year CIP
Demographic Trends in the Twin Cities
Ductile 101
Intro to Hydrant Repair and Maintenance
Intro to Ductile Iron Fitting
Watershed Management
Opportunistic Pathogens
Ozone 101
Access and Affordability
Community Engagement Training
Cyber Security

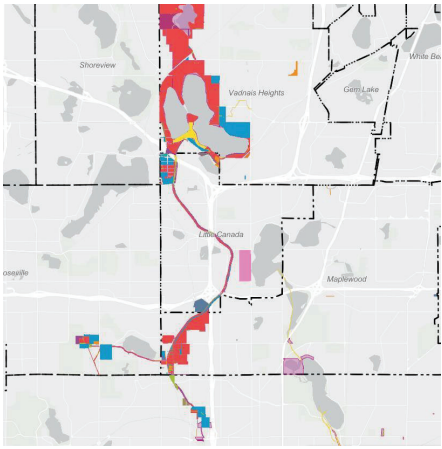
Team Building Activities:

GIS Scavenger Hunt	HR Trivia
CIS Scavenger Hunt	Healthy Saint Paul
Bill Analysis	SDS Online
Meter Madness	Cyber Security
CODE BLUE!	Chat GPT
You've Got Lead!	ACRONYMS OH MY
Name that Part!	



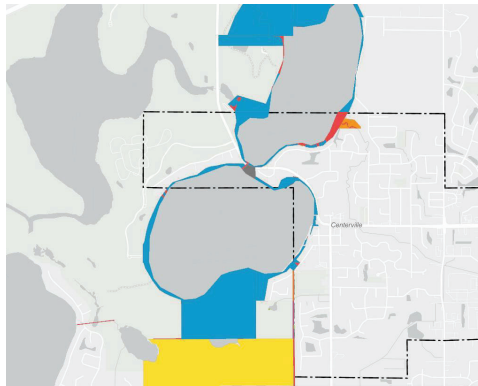
LAND REVIEW

Agreements

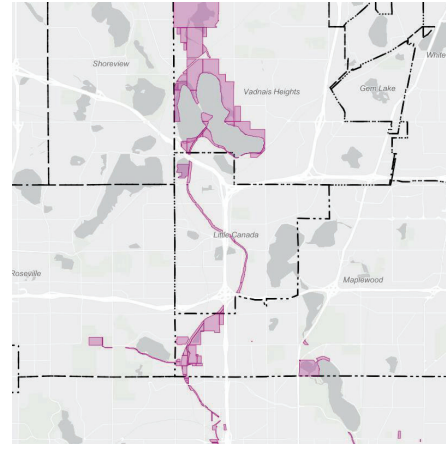


What land do we have easements on or lease from others?
What needs do we currently have or expect that aren't met?

Agreements 2

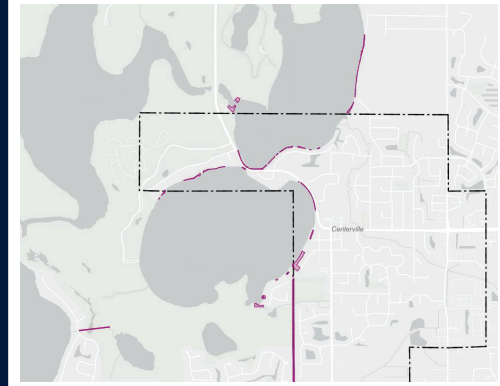


Land Ownership



What land does SPRWS own?
How is this land currently being used? Leases with others?
Is there a potential for future uses?
What benefits exist with maintaining ownership?
Are there ongoing costs to keeping this land?
Is this sellable? Value?
Are there opportunities to monetize on property without selling?

Land Ownership 2



Federal Earmark Request

Guidance has not yet
been released for FY26
**Congressionally
Directed Spending**



Mississippi River Pump Station Rehabilitation



Purpose of Funding Request:

This proposal requests funding for the rehabilitation of the Fridley Pump Station, a critical facility that plays a vital role in supplying water to Saint Paul Regional Water Services (SPRWS). The Fridley Pump Station pumps water from the Mississippi River to SPRWS, which treats and delivers over 40 million gallons of water daily to more than 450,000 customers across 14 cities.

As a crucial piece of infrastructure, the pump station has served the region effectively for many decades. However, it is now in need of significant rehabilitation to ensure the ongoing, reliable supply of surface water to SPRWS for treatment. These improvements are imperative to help guarantee the continued availability of clean drinking water for the region's residents and businesses.

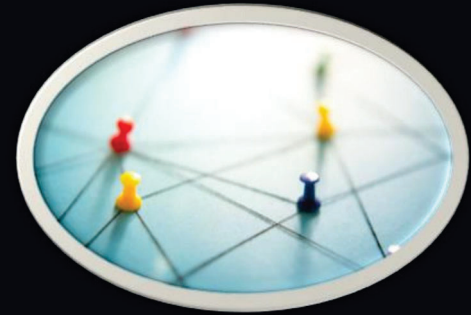
Numerous vital components at the station are aging and in need of investment, including pumps and sealing water systems, flood protection equipment, corroded piping, and additional electrical infrastructure. SPRWS and project partner, Black and Veatch, are currently working to prioritize improvements and equipment replacements since available funding is unlikely to be sufficient to cover full capital needs. Funding support of \$3.5M can ensure all necessary improvements can occur efficiently in 2026.

What's Next?

April Topics



Land Review



Strategic Plan



Q1 Statistics
Customer Portal