

Adult Use Cannabis Zoning Study Overview

Senior City Planner Tony Johnson



SAINT PAUL
MINNESOTA

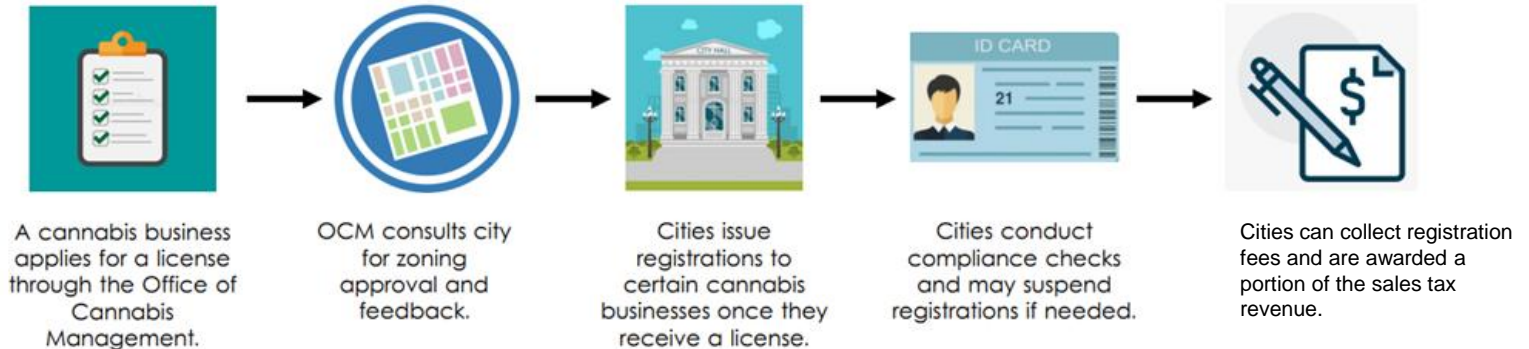
STPAUL.GOV



Background

- Minnesota State Statute Chapter 342, legalizes the possession, use, manufacturing, and sale of certain cannabis products within the state.
- Under the new regulatory framework, the Office of Cannabis Management licenses cannabis businesses, and cities **regulate their locations through Zoning.**
- Office of Cannabis Management to begin licensing a limited number cannabis businesses in 2025.

City Role in Regulation



WHY ARE WE HERE?

- Cities have to create zoning regulations for this new industry, in response to the new state law.
- Zoning sets the stage for where businesses can locate.
- Businesses need certainty on zoning so they can decide where to invest prior to applying to the state for a license.
- The goal is to bring the zoning study before you now to have the rules in place before licenses start to be issued in 2025.





State vs. City Responsibilities

State Responsibilities

Licensing businesses

- Business operations
- Security plan/camera requirements
- Age requirements
- Advertising prohibitions
- Etc.

Enforcement

- Violations of state law
- Cannabis business violations of local ordinances can be referred to them. (zoning etc.)

City Responsibilities

Zoning (PED)

- **Location of businesses**
- **Separation requirements**
- **Size of businesses**
- **Etc.**

Registering Businesses (DSI) (not covered by this study)

- Collect fees
- Compliance checks
- Tax revenue



Zoning Study Overview

- 16 state license types
- Amending existing uses in code whenever possible

License Type	Business Activity					
	Retail Sales	Wholesale	Cannabis Cultivation	Cannabis Product Manufacturing	On-site Consumption	Other Activity
Cannabis Microbusiness	X	X	X	X	X	
Cannabis Mezzobusiness	X	X	X	X		
Cannabis Cultivator		X	X			
Cannabis Manufacturer		X		X		
Cannabis Retailer	X					
Cannabis Wholesaler		X				
Cannabis Transporter						X
Cannabis Testing Facility						X
Cannabis Event Organizer						X
Cannabis Delivery Service						X
Medical Cannabis Cultivator		X	X			
Medical Cannabis Processor		X		X		
Medical Cannabis Retailer	X					
Medical Cannabis Combination Business.	X	X	X	X		
Lower-potency Hemp Edible Manufacturer				X		
Lower-potency Hemp Edible Retailer	X				X	

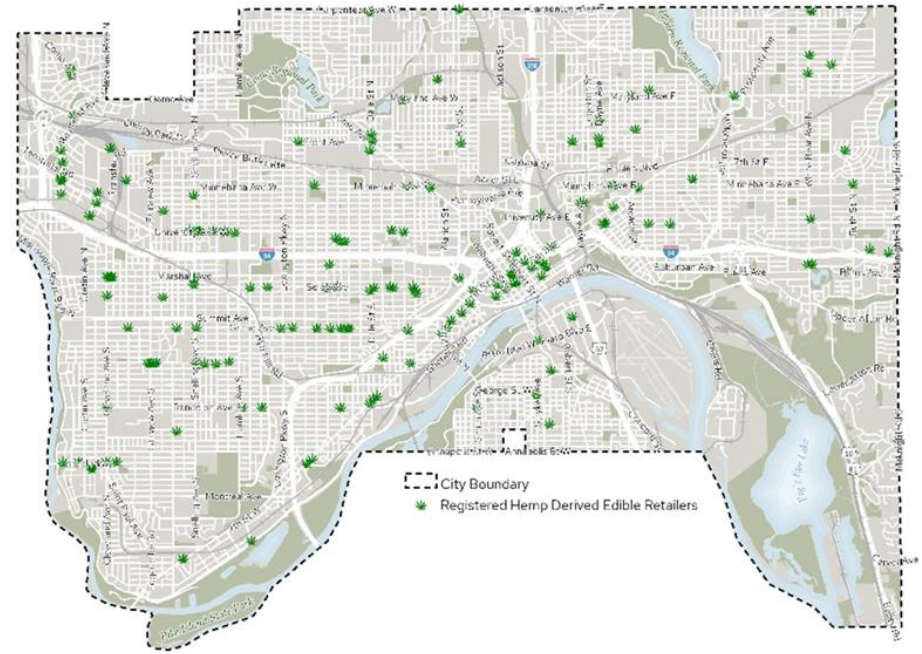


Cannabis Retail Amendments

Lower-potency hemp-derived edibles (under 0.3% THC by volume)

- Allowed as 'general retail'
- In mixed use areas, commercial corridors, neighborhood nodes
- Only permitted to sell hemp-derived edible products (which are currently legal and are found in many shops and grocery stores).

Registered Hemp Derived Edibles Retailers
Wednesday, February 14, 2024



SP2023-01-01: Saint Paul Planning & Economic Development. This map is a general informational map and does not constitute a legal document. It is intended to provide a visual representation of the data provided. The map is not to scale and is not intended to be used for legal purposes. The map is provided as a service to the public and is subject to change without notice. The map is not intended to be used for legal purposes. The map is provided as a service to the public and is subject to change without notice.





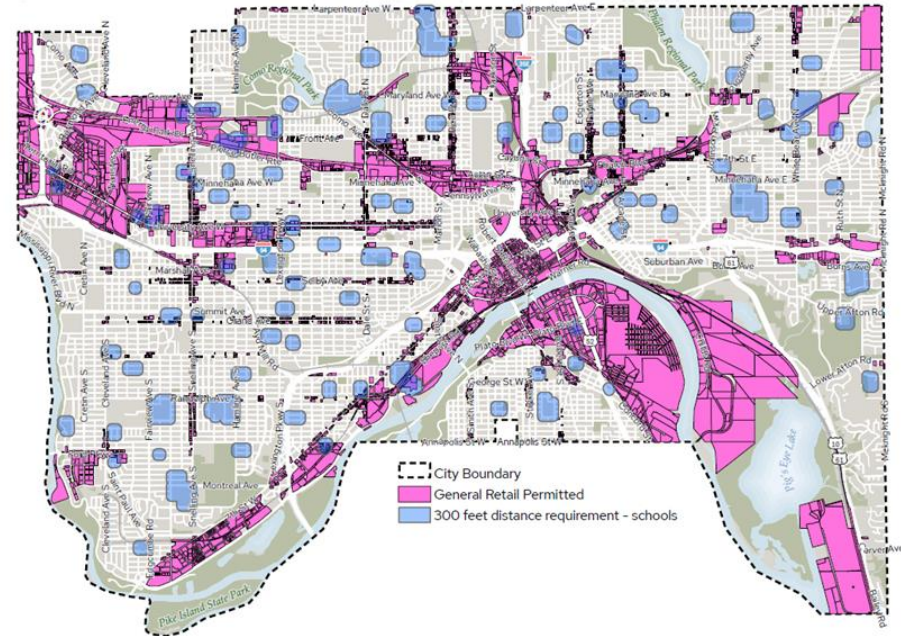
Cannabis Retail Amendments

Cannabis Retail (over 0.3% THC by volume)

- New land use definition
- In mixed use areas, commercial corridors, neighborhood nodes
- Prohibited within 300 feet of schools
- Over 15,000 square feet requires CUP, except in Industrial Districts

300 feet from schools distance requirement

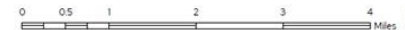
Wednesday, February 14, 2024



DATA SOURCES: St. Paul Information GIS Portal/Planners current Ramsey County data via Minnesota Geographic Information and Building Programs (2023 version) Surface dataset, Ramsey County Water bodies via Minnesota DNR - LANDFILLING ON USE. This document was prepared by the Saint Paul Planning and Economic Development Department and is intended to be used by citizens and interested parties only. This drawing is not a legally recorded plat, zoning ordinance or other Planning Commission, Analytical Zoning Map, Part of City Ordinance, Resolution, Ordinance, or other City of Saint Paul Planning Commission document.



SAINT PAUL
PLANNING & ECONOMIC
DEVELOPMENT





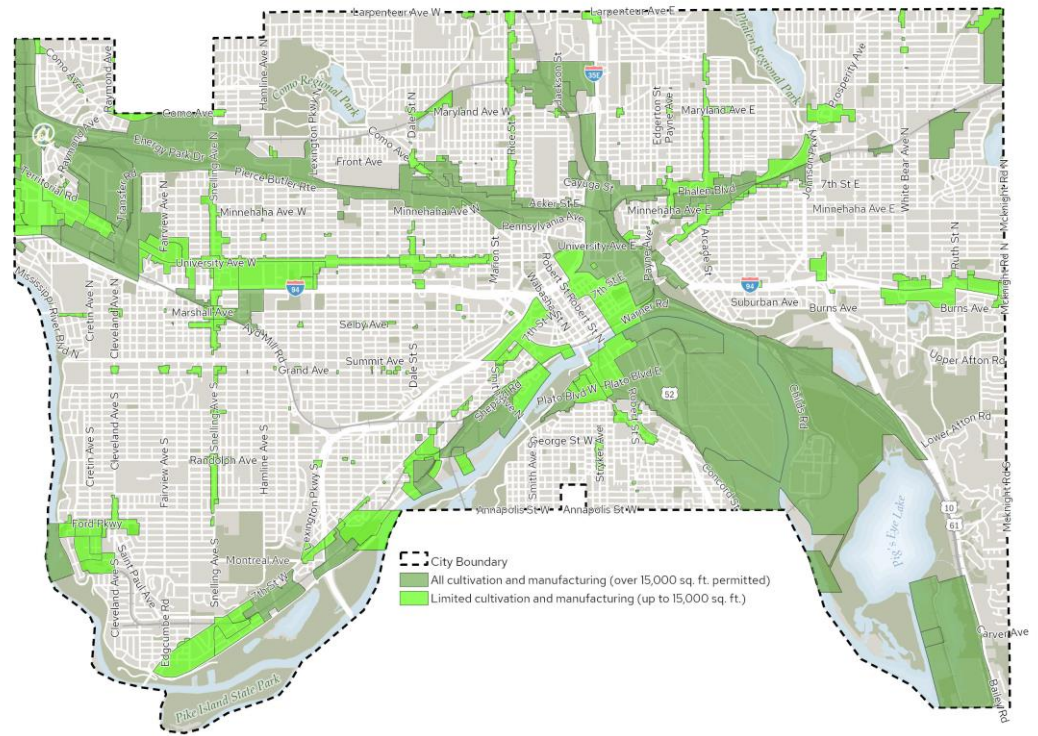
Three Proposed Manufacturing and Cultivation Amendments

- 4 cannabis cultivation and production proposed amendments*:
 - limited cultivation and manufacturing** (under 15,000 sq. ft.) on most commercial corridors **LIGHT GREEN**
 - industrial-scale production** (over 15,000 sq. ft.) in industrial districts **DARK GREEN**
 - Outdoor cultivation** regulated as “agriculture” with conditional use permit

*Similar to current regulation of “craft breweries” vs “national breweries”

Cannabis Cultivation and Cannabis Product Manufacturing

Wednesday, March 6, 2024



DATA CREDITS: St. Paul Enterprise GIS Parcel Polygons; current Ramsey County data via Minnesota Geospatial Commons; Road and Building Polygons: 2017 impervious surface dataset; Ramsey County Water bodies via Minnesota DNR - LINDSEY JONES ON USE. This document was prepared by the Saint Paul Planning and Economic Development Department and is intended to be used for advisory and illustrative purposes only. This drawing is not a legally recorded plan, nor is it an official law map or engineering schematic and is not intended to be used as such. DATE: 3/6/2024 4:36 PM - DOCUMENT PATH: C:\Users\jagrosson\OneDrive - City of Saint Paul\Cannabis_Distance_Requirements_Analysis\Cannabis_Map_Report\Cannabis_Map_Report.mxd





Planning Commission Recommendation

On June 7th, the planning commission held a public hearing:

- 4 of the commentors against the proposed amendments as drafted.
- 2 of commentors were in favor of the proposed amendments as drafted.

On August 2nd, the planning **commission voted unanimously to recommend approval of the proposed amendments.**



Questions/Additional Resources

<https://www.lmc.org/resources/adult-use-cannabis-what-cities-need-to-know/>

<https://mn.gov/ocm/>