

470 White Bear Ave

#24-078-931 Rezone from H2 residential to RM2 medium-density multiple-family residential



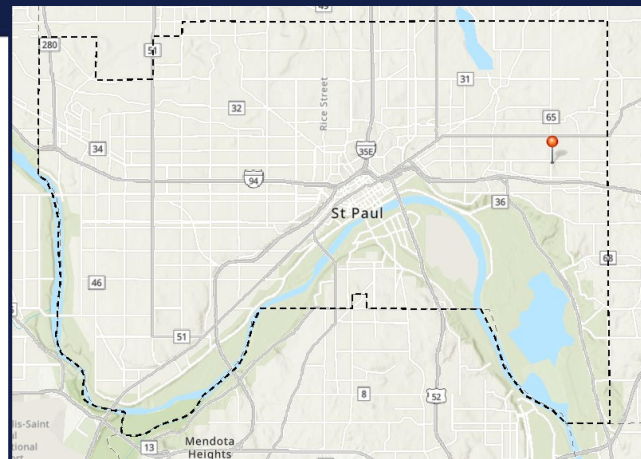
SAINT PAUL
MINNESOTA

STPAUL.GOV



Location

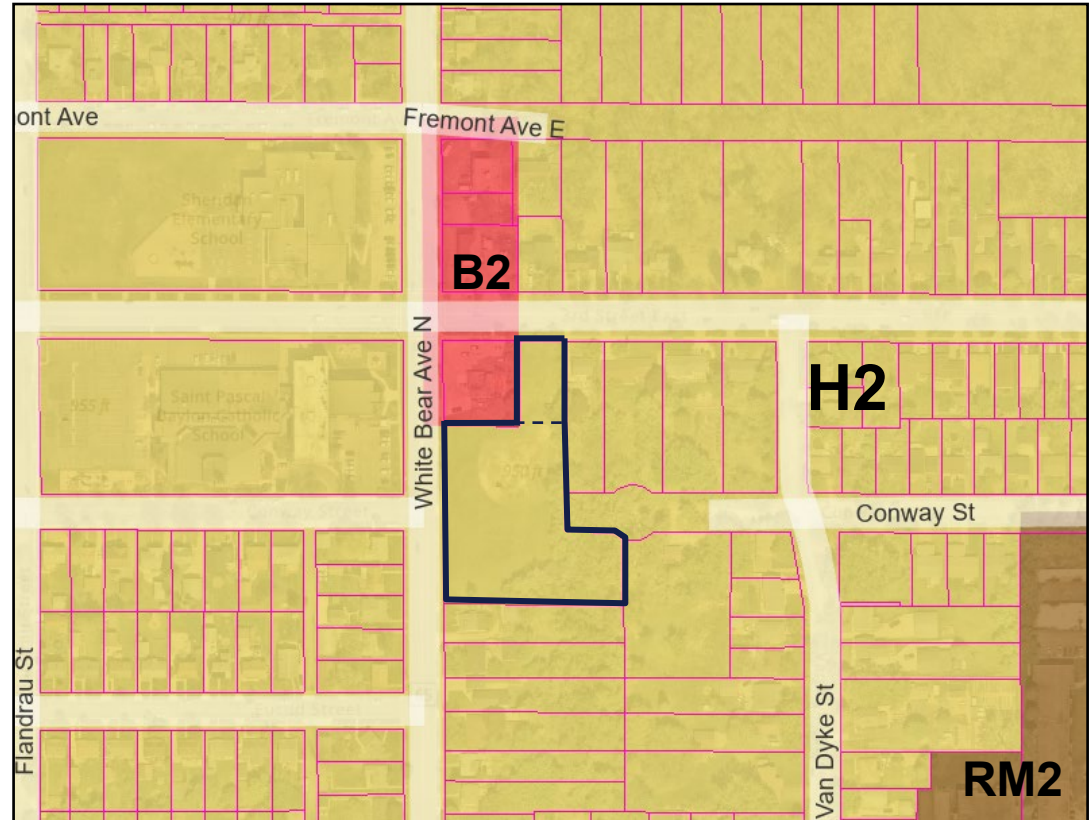
470 White Bear Ave





Land Use & Zoning

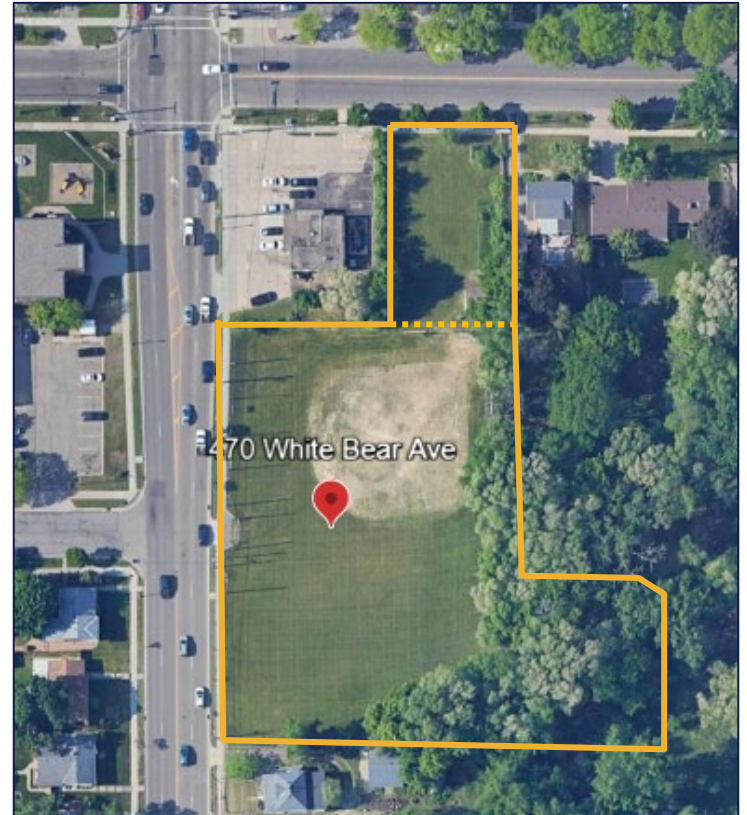
- **North:** Residential (**H2**), auto repair (**B2**), restaurant (**B2**)
- **East:** Residential (**H2**)
- **South:** Residential (**H2**)
- **West:** Residential (**H2**), elementary school (**H2**), residential (**H2**)





Site

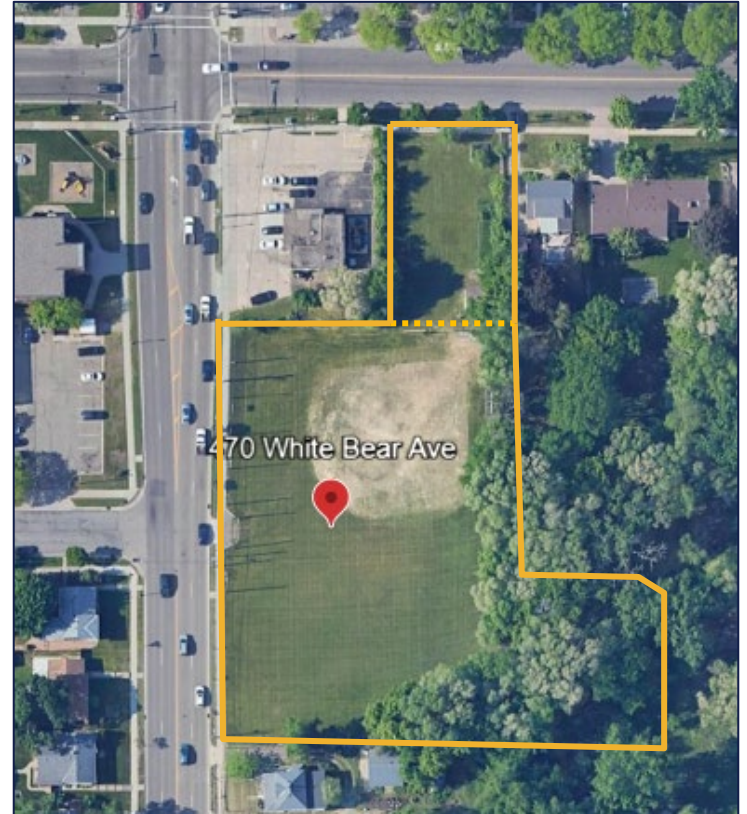
- **Application:** Rezoning from H2 residential to RM2 medium-density multiple-family residential
- **Parcel Size:** 76,686 square feet
- **Undeveloped vacant lot** used as outdoor play space





Proposed Zoning

“The RM2 medium-density multiple-family residential district is designed for multiple-family residential and supportive, complementary uses. Its intent is to foster and support pedestrian- and transit-oriented residential development and provide for infill housing to meet a variety of housing needs.”



Questions?

470 White Bear Avenue

#24-078-931 Rezone from H2 residential to RM2 medium-density multiple-family residential



SAINT PAUL
MINNESOTA

STPAUL.GOV