

10 River Park Plaza

Ord 25-23 Rezone from T3M traditional neighborhood with master plan to ITM transitional industrial with master plan



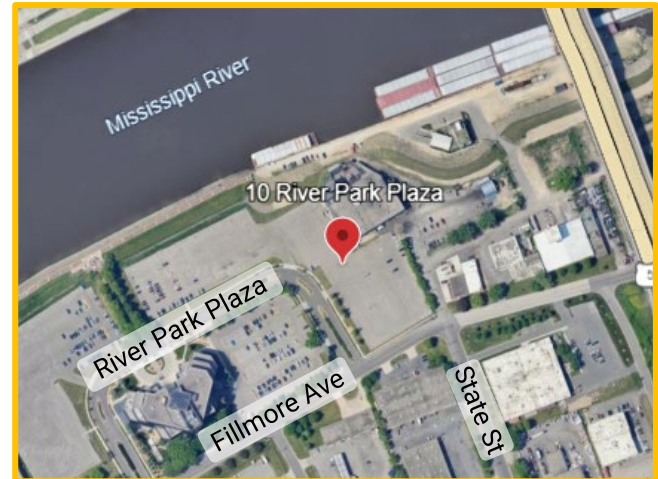
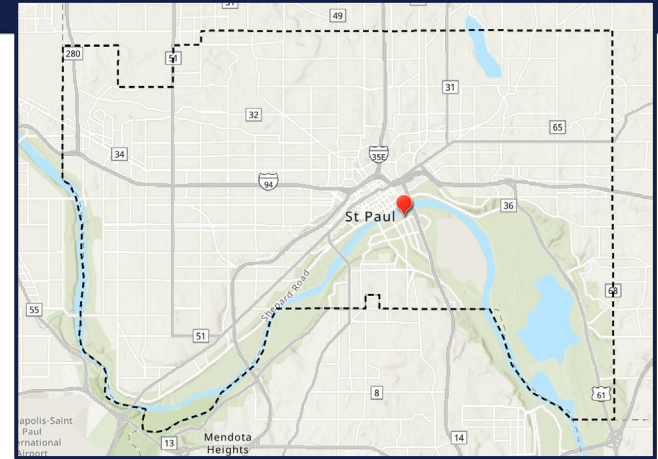
SAINT PAUL
MINNESOTA

STPAUL.GOV



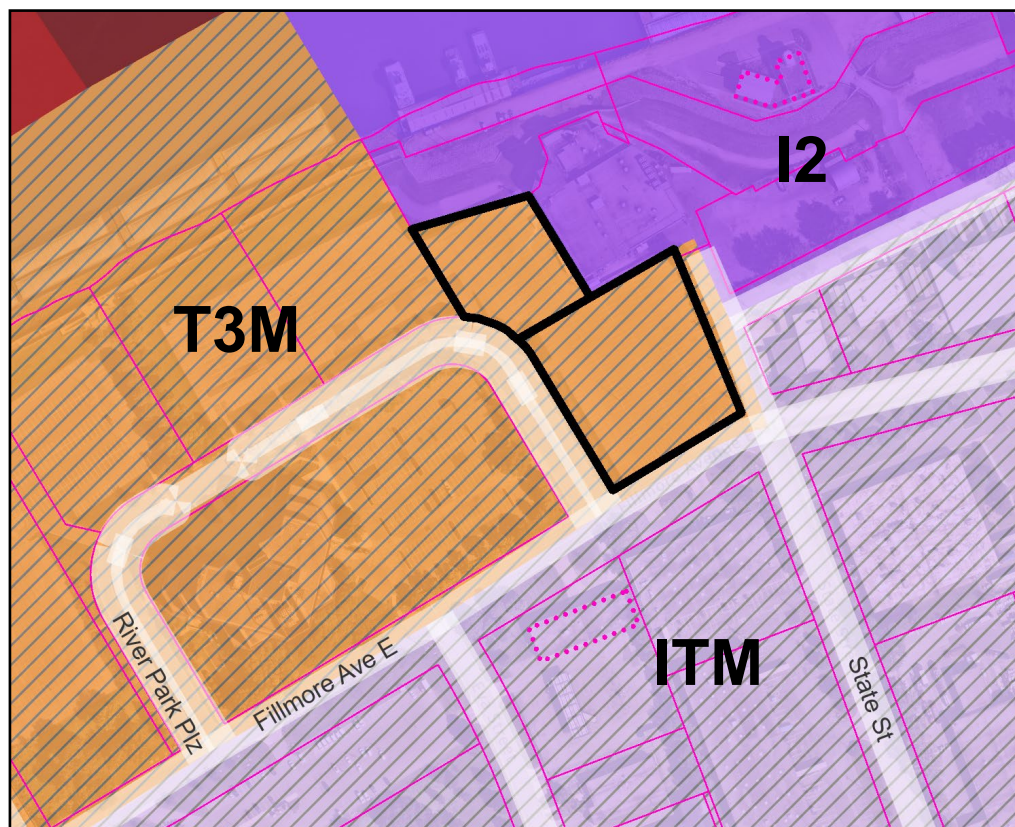
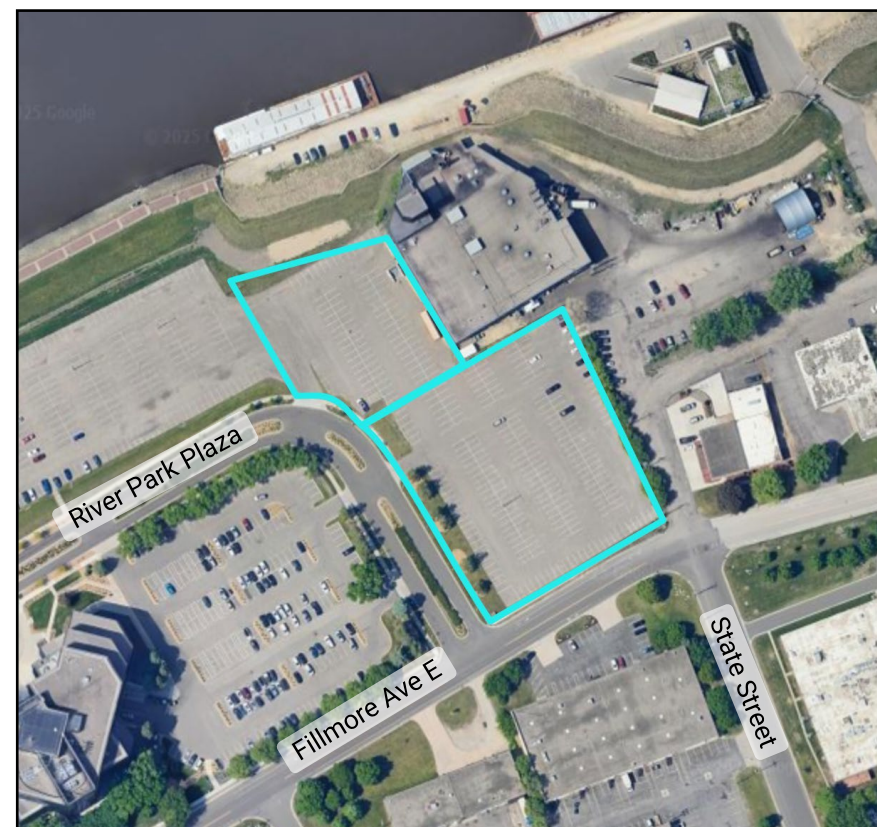
Location

10 River Park Plaza



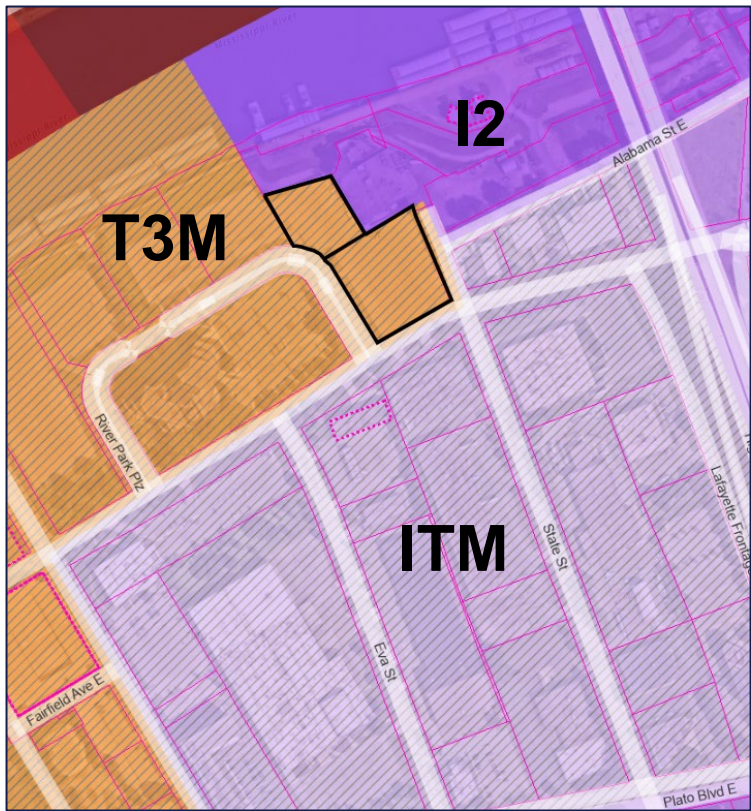


Land Use & Zoning

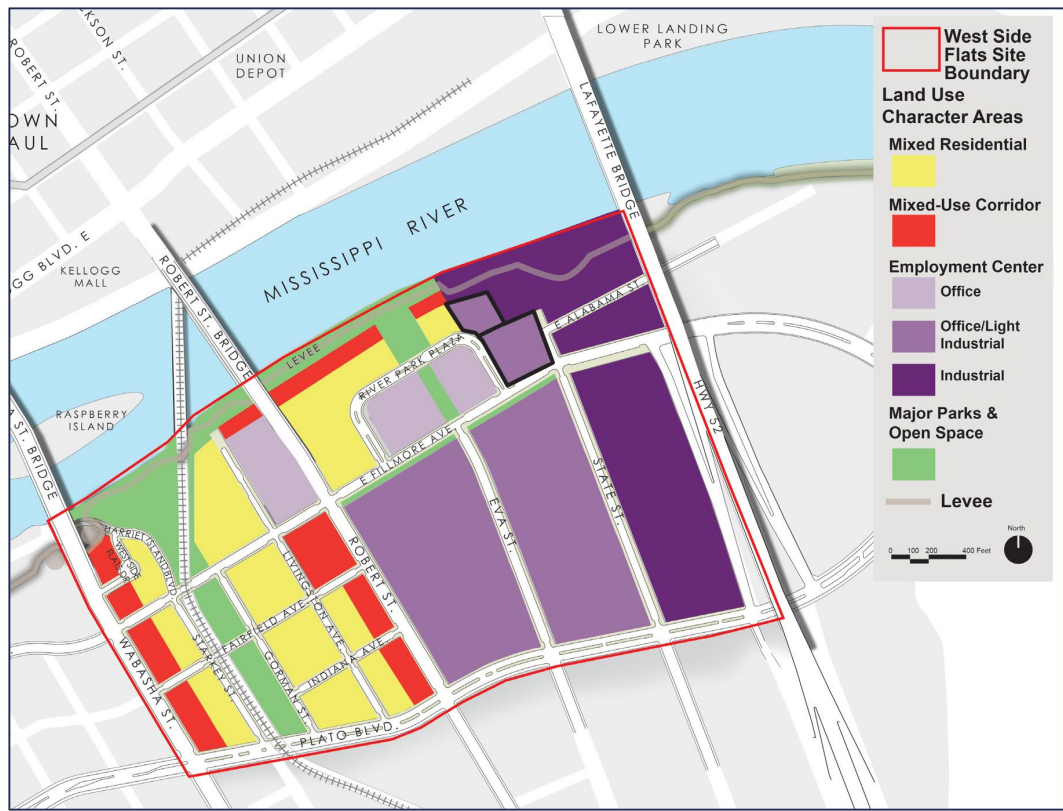




Finding: Rezoning is consistent with Comprehensive Plan



Zoning map



West Side Flats Master Plan Land Use Plan (amended in 2025)

Questions?

10 River Park Plaza

Ord 25-23 Rezone from T3M traditional neighborhood with master plan to ITM transitional industrial with master plan

