

10 River Park Plaza

#24-078-486 Amend the West Side Flats Comprehensive Plan addendum to change the land use from mixed residential to office/light industrial



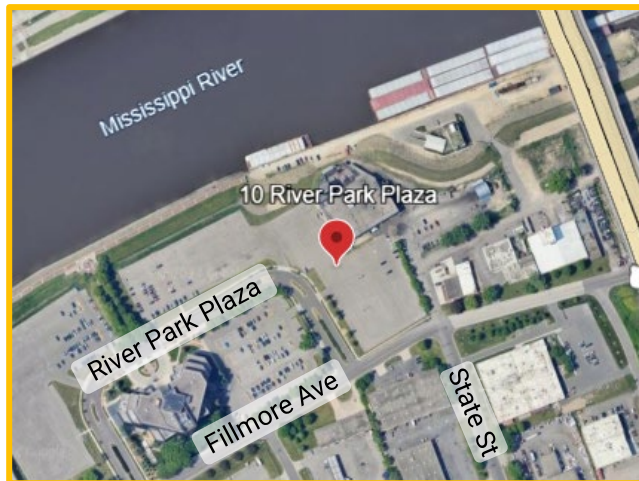
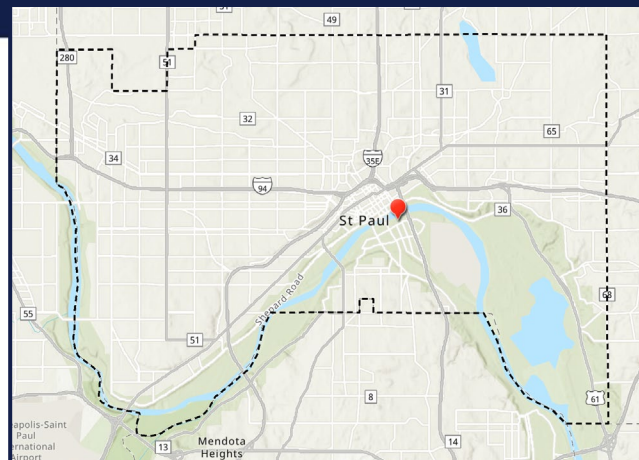
SAINT PAUL
MINNESOTA

STPAUL.GOV



Location

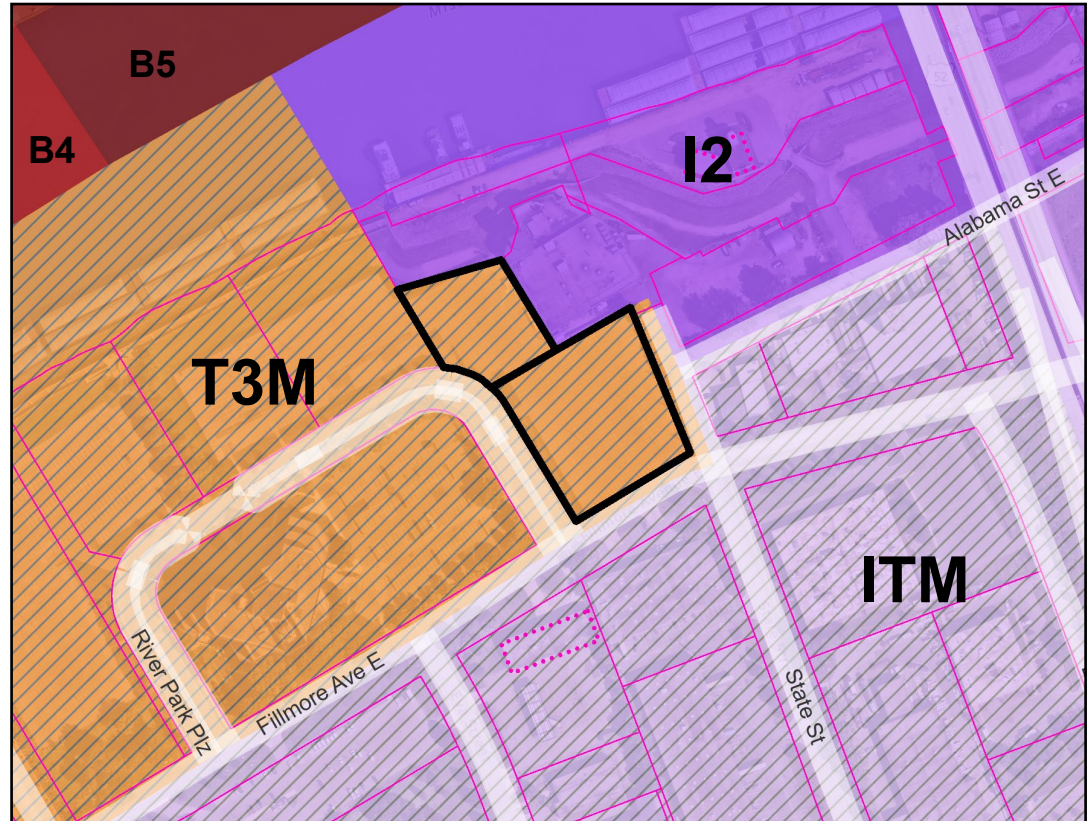
10 River Park Plaza





Land Use & Zoning

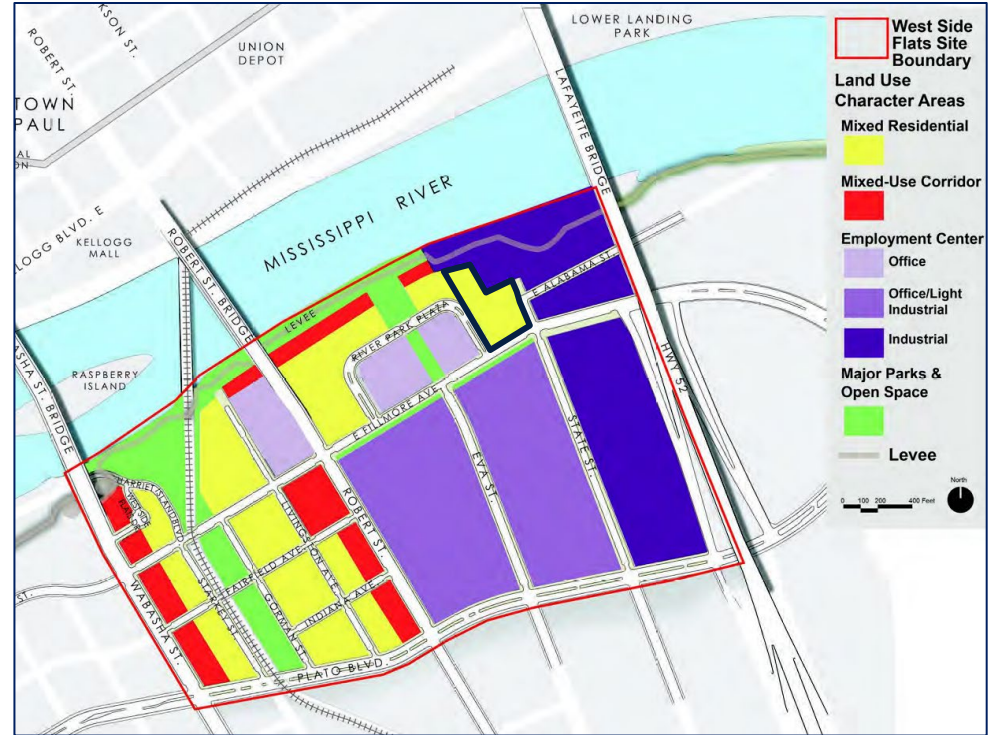
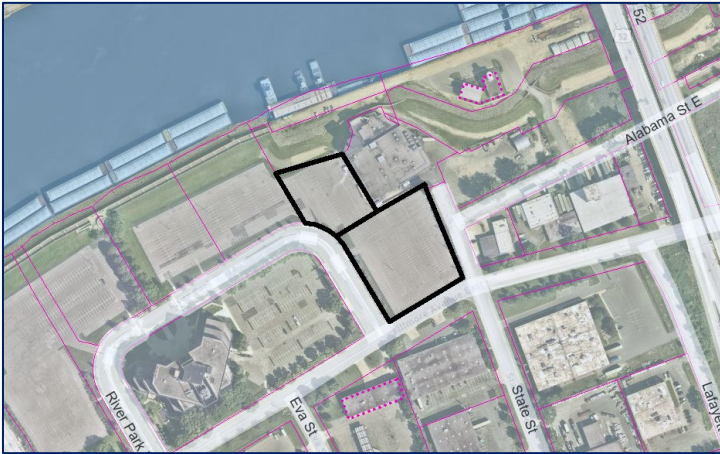
- **North:** Pier Foundry (**I2**),
Mississippi River
- **East:** Industrial uses (**ITM**)
- **South:** Industrial uses (**ITM**),
multitenant
industrial/commercial
buildings (**ITM**)
- **West:** Surface parking (**T3M**),
Comcast office building
(**T3M**)





Zoning Application

- **Application:** Amend the West Side Flats Comprehensive Plan addendum to change the land use from mixed residential to office/light industrial

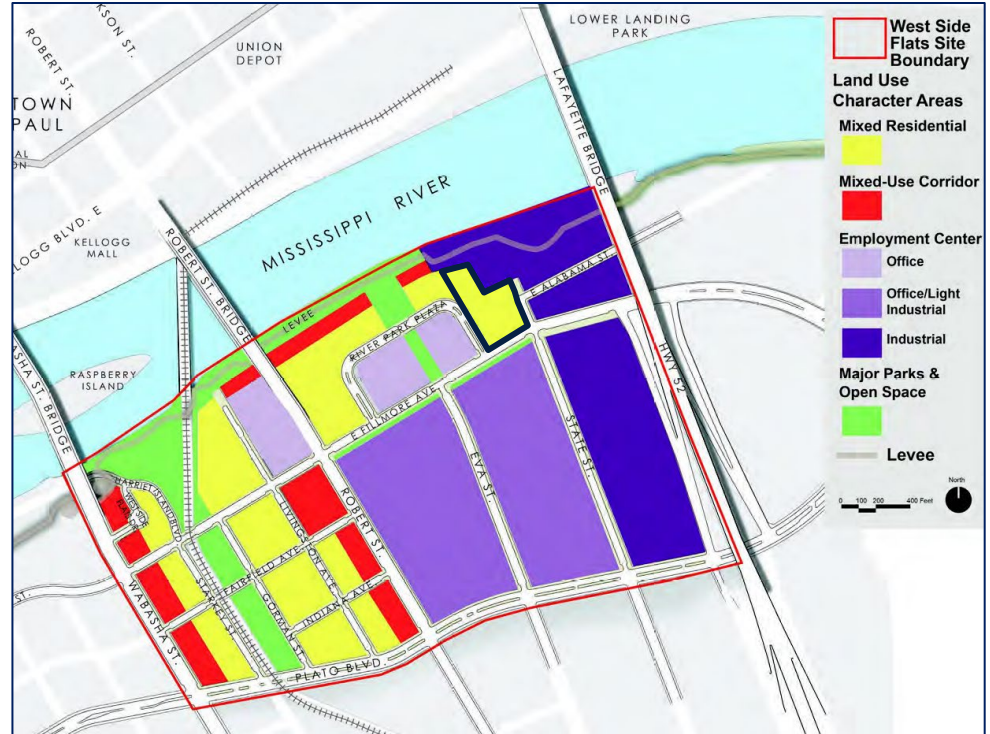




Amendment is consistent with the WSFMP guiding principles

Guiding Principle 1:

Integrate a broad mix of complementary land uses throughout the neighborhood that offer people opportunities for living, working, commerce, entertainment and recreation.



Questions?

10 River Park Plaza

#24-078-486 Amend the West Side Flats Comprehensive Plan addendum to change the land use from mixed residential to office/light industrial



SAINT PAUL
MINNESOTA

STPAUL.GOV