

# HIGHLAND BRIDGE ROWHOMES EIGHTH ADDITION

KNOW ALL PERSONS BY THESE PRESENTS: That M/I Homes of Minneapolis/St. Paul, LLC, a Delaware limited liability company, owner of the following described property situated in the City of Saint Paul, County of Ramsey, State of Minnesota:

Lot 2, Block 25, FORD, Ramsey County, Minnesota.

Has caused the same to be surveyed and platted as HIGHLAND BRIDGE ROWHOMES EIGHTH ADDITION.

In witness whereof said M/I Homes of Minneapolis/St. Paul, LLC, a Delaware limited liability company, has caused these presents to be signed by its proper officer this \_\_\_\_\_ day of \_\_\_\_\_, 20\_\_\_\_.

Signed: M/I Homes of Minneapolis/St. Paul, LLC

\_\_\_\_\_, Manager  
Susan E. Krohne

STATE OF MINNESOTA  
COUNTY OF \_\_\_\_\_

The foregoing instrument was acknowledged before me this \_\_\_\_\_ day of \_\_\_\_\_, 20\_\_\_\_, by Susan E. Krohne, Manager of M/I Homes of Minneapolis/St. Paul, LLC, a Delaware limited liability company, on behalf of the company.

\_\_\_\_\_  
Signature  
\_\_\_\_\_  
Printed Name  
Notary Public, \_\_\_\_\_ County, Minnesota  
My Commission Expires \_\_\_\_\_

## SURVEYOR'S CERTIFICATE

I, Daniel Ekrem, Licensed Land Surveyor, do hereby certify that I have surveyed or directly supervised the survey of the property described on this plat; prepared this plat or directly supervised the preparation of this plat; that this plat is a correct representation of the boundary survey; that all mathematical data and labels are correctly designated on this plat; that all monuments depicted on this plat have been correctly set; that all water boundaries and wet lands, as defined in Minnesota Statutes, Section 505.01, Subd. 3, as of the date of the surveyor's certification are shown and labeled on this plat; and all public ways are shown and labeled on this plat.

Dated this \_\_\_\_\_ day of \_\_\_\_\_, 20\_\_\_\_.

\_\_\_\_\_  
Daniel Ekrem, Licensed Land Surveyor  
Minnesota License No. 57366

STATE OF MINNESOTA  
COUNTY OF \_\_\_\_\_

The foregoing Surveyor's Certificate was acknowledged before me this \_\_\_\_\_ day of \_\_\_\_\_, 20\_\_\_\_, by Daniel Ekrem, Licensed Land Surveyor.

\_\_\_\_\_  
Signature  
\_\_\_\_\_  
Printed Name  
Notary Public, \_\_\_\_\_ County, Minnesota  
My Commission Expires \_\_\_\_\_

CITY COUNCIL  
CITY OF SAINT PAUL

I do hereby certify that on the \_\_\_\_\_ day of \_\_\_\_\_, 20\_\_\_\_, the City Council of the City of Saint Paul, Minnesota, approved this plat.

\_\_\_\_\_  
City Clerk

## PROPERTY TAX, RECORDS AND ELECTION SERVICES DEPARTMENT

Pursuant to Minnesota Statutes, Section 505.021, Subd. 9, taxes payable in the year \_\_\_\_\_ on the land hereinbefore described have been paid. Also, pursuant to Minnesota Statutes, Section 272.12, there are no delinquent taxes and transfer entered this \_\_\_\_\_ day of \_\_\_\_\_, 20\_\_\_\_.

By \_\_\_\_\_, Ramsey County Auditor/Treasurer

By \_\_\_\_\_, Deputy

## COUNTY SURVEYOR

Pursuant to Minnesota Statutes, Section 383A.42, this plat is approved this \_\_\_\_\_ day of \_\_\_\_\_, 20\_\_\_\_.

\_\_\_\_\_  
Daniel D. Baar, L.S.,  
Ramsey County Surveyor

## REGISTRAR OF TITLES

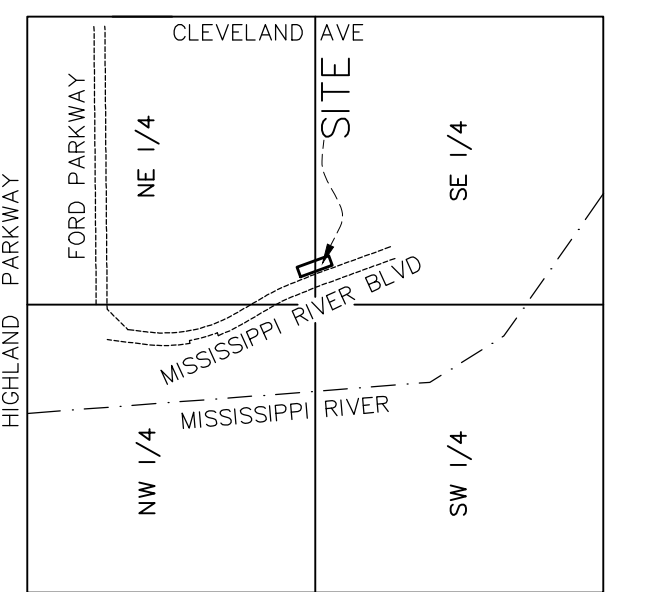
Registrar of Titles, County of Ramsey, State of Minnesota

I hereby certify that this plat of HIGHLAND BRIDGE ROWHOMES EIGHTH ADDITION was filed in the office of the Registrar of Titles for public record on this \_\_\_\_\_ day of \_\_\_\_\_, 20\_\_\_\_, at \_\_\_\_\_ o'clock \_\_\_\_\_ M. and was duly filed in Book \_\_\_\_\_ of Plats, Pages \_\_\_\_\_ and \_\_\_\_\_, as Document Number \_\_\_\_\_.

\_\_\_\_\_  
Deputy Registrar of Titles

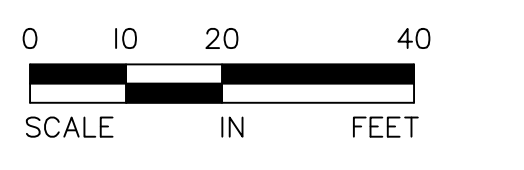
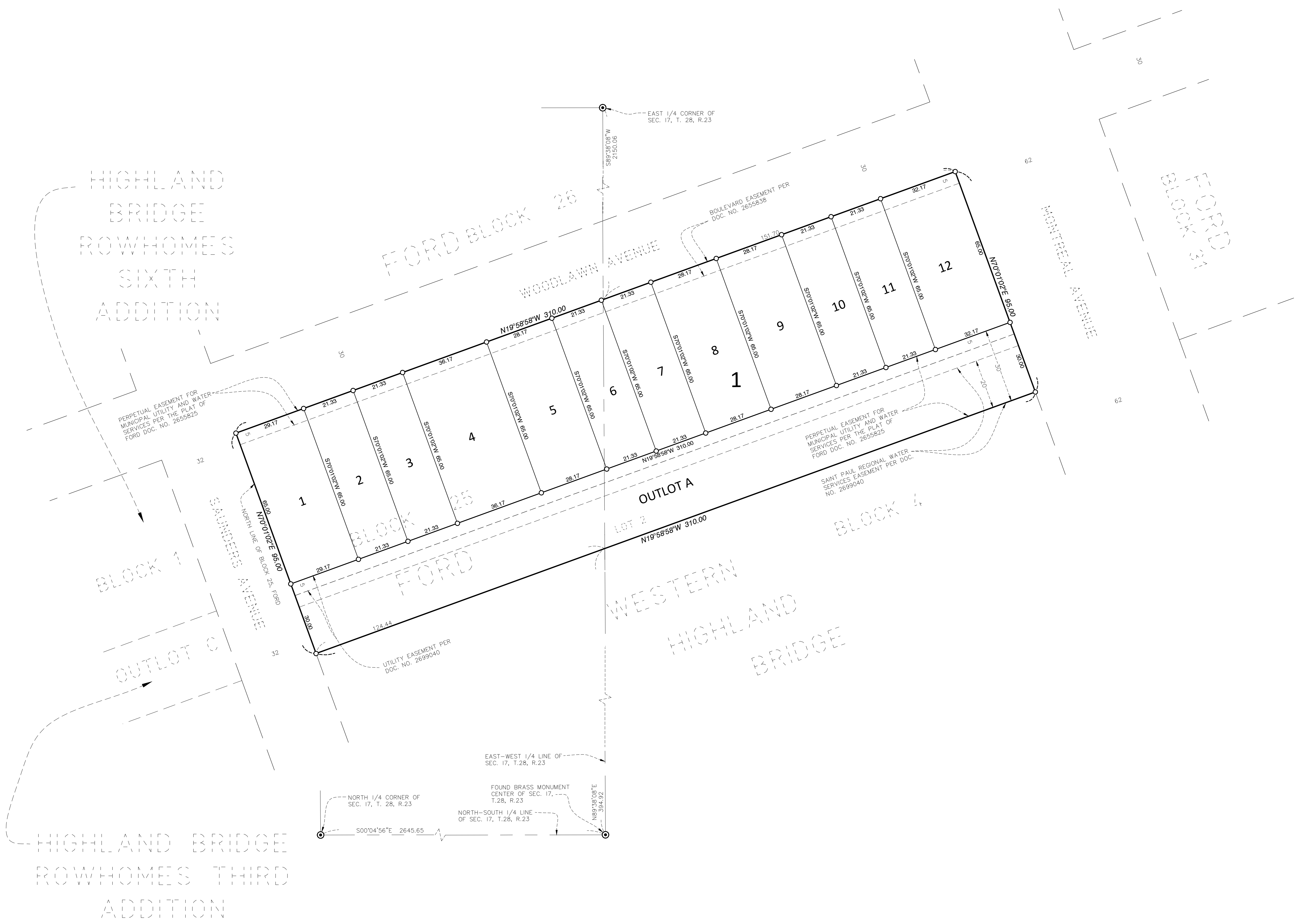
# HIGHLAND BRIDGE ROWHOMES EIGHTH ADDITION

## VICINITY MAP



THE NORTH LINE OF BLOCK 25, FORD, IS ASSUMED TO HAVE A BEARING OF N70°01'02"E.

- Denotes 1/2 inch x 18 inch iron pipe set marked by license no. 57366
- Denotes found Cast Iron Monument



SCALE: ONE INCH EQUALS TWENTY FEET

