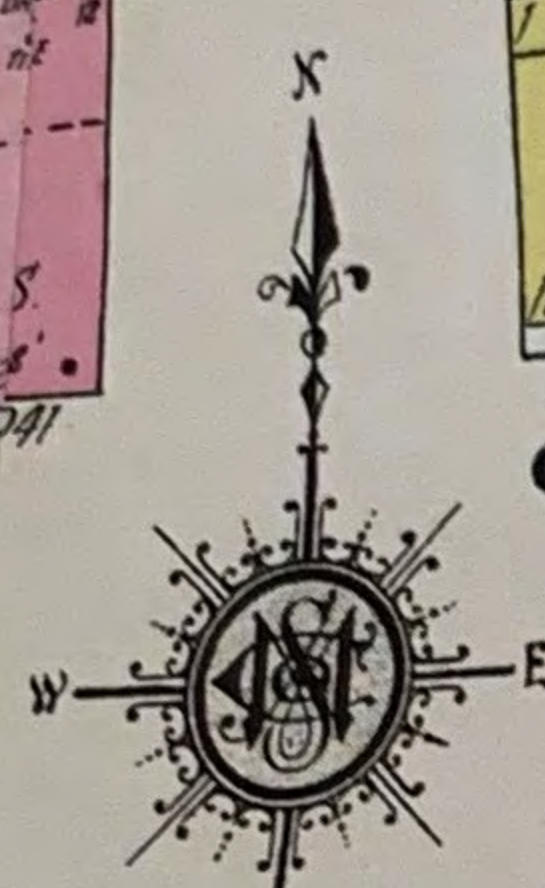
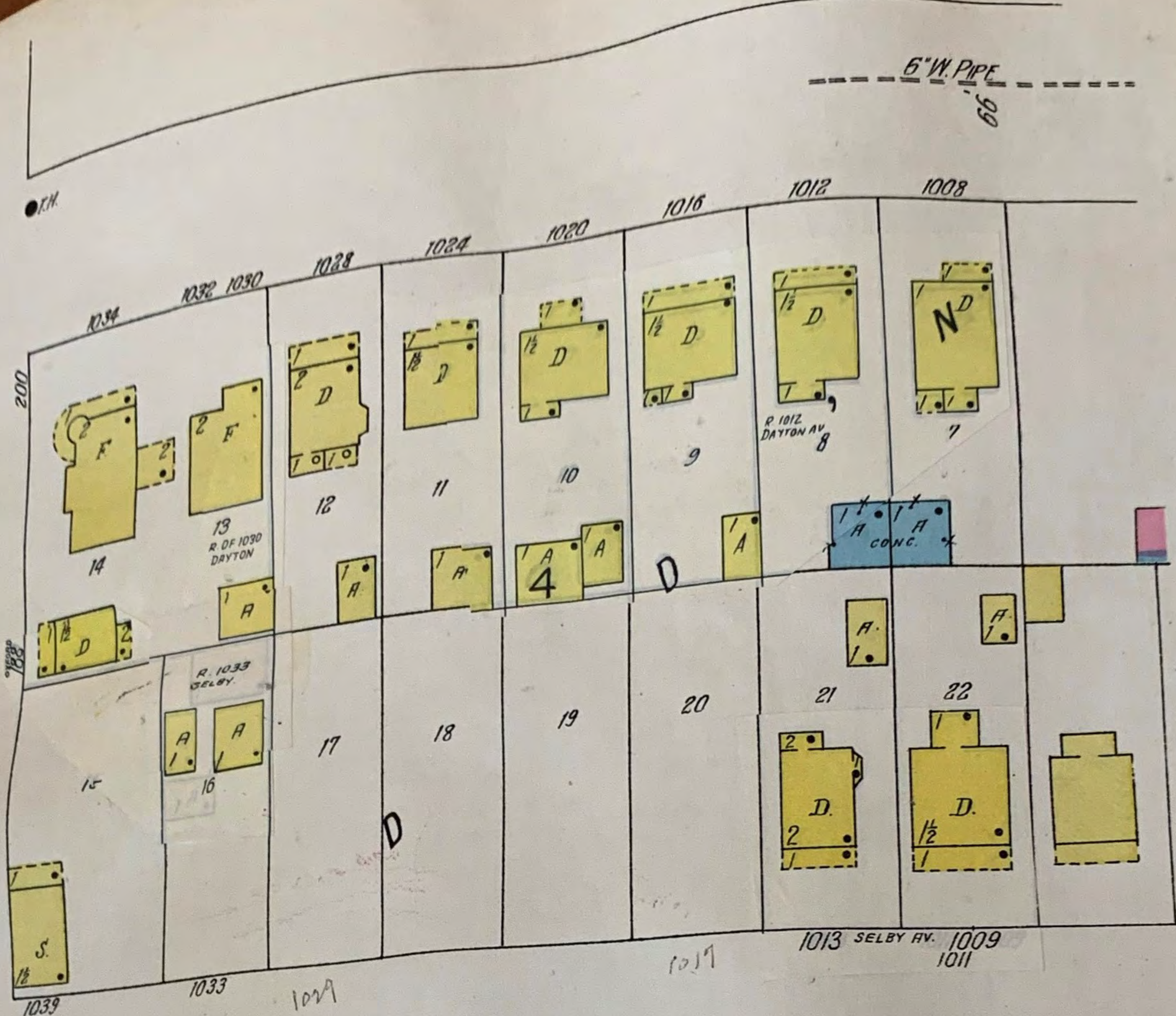


363

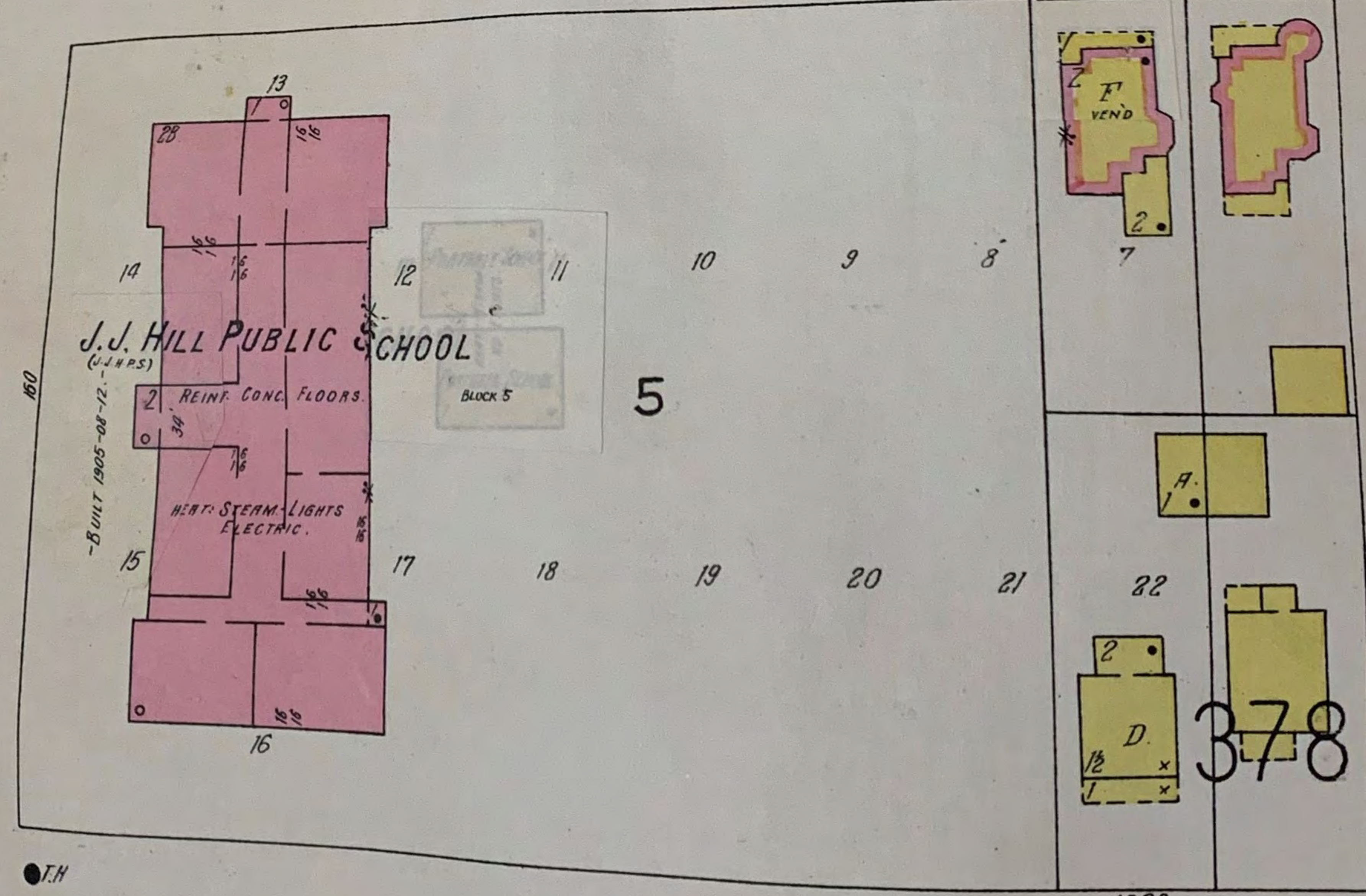
DAYTON AV.



SELBY AV.



N. OXFORD



J.J. HILL PUBLIC SCHOOL

(J.H.P.S.)

REINF. CONC. FLOORS.

HEAT, STEAM, LIGHTS, ELECTRIC.

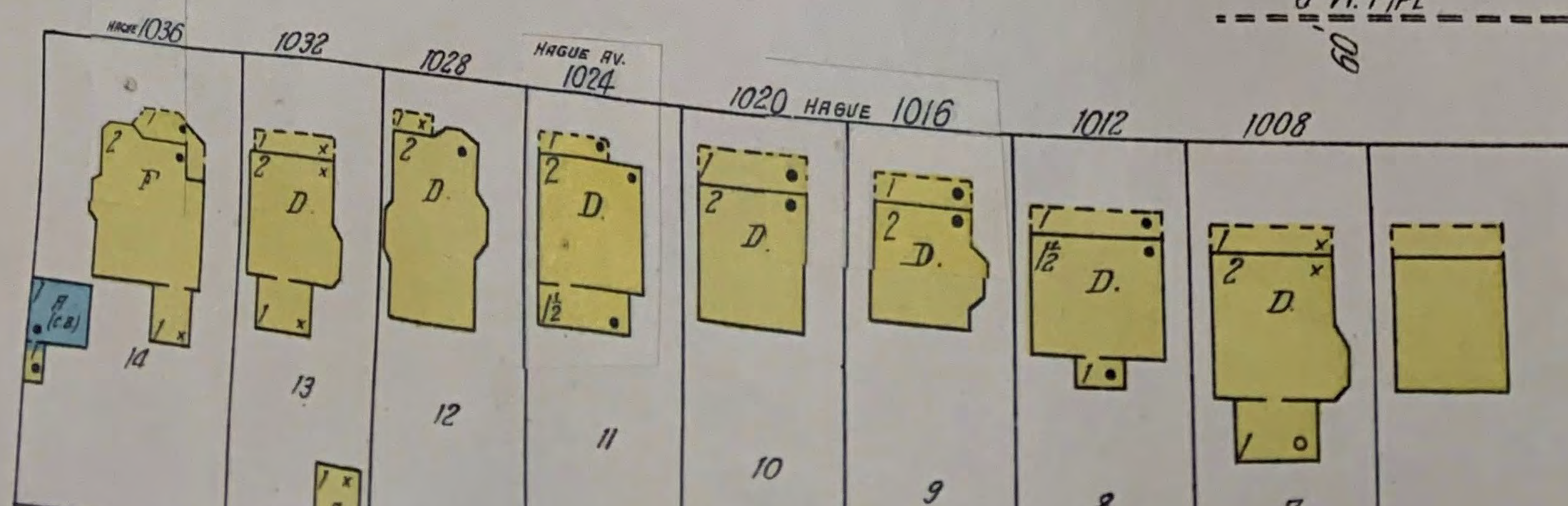
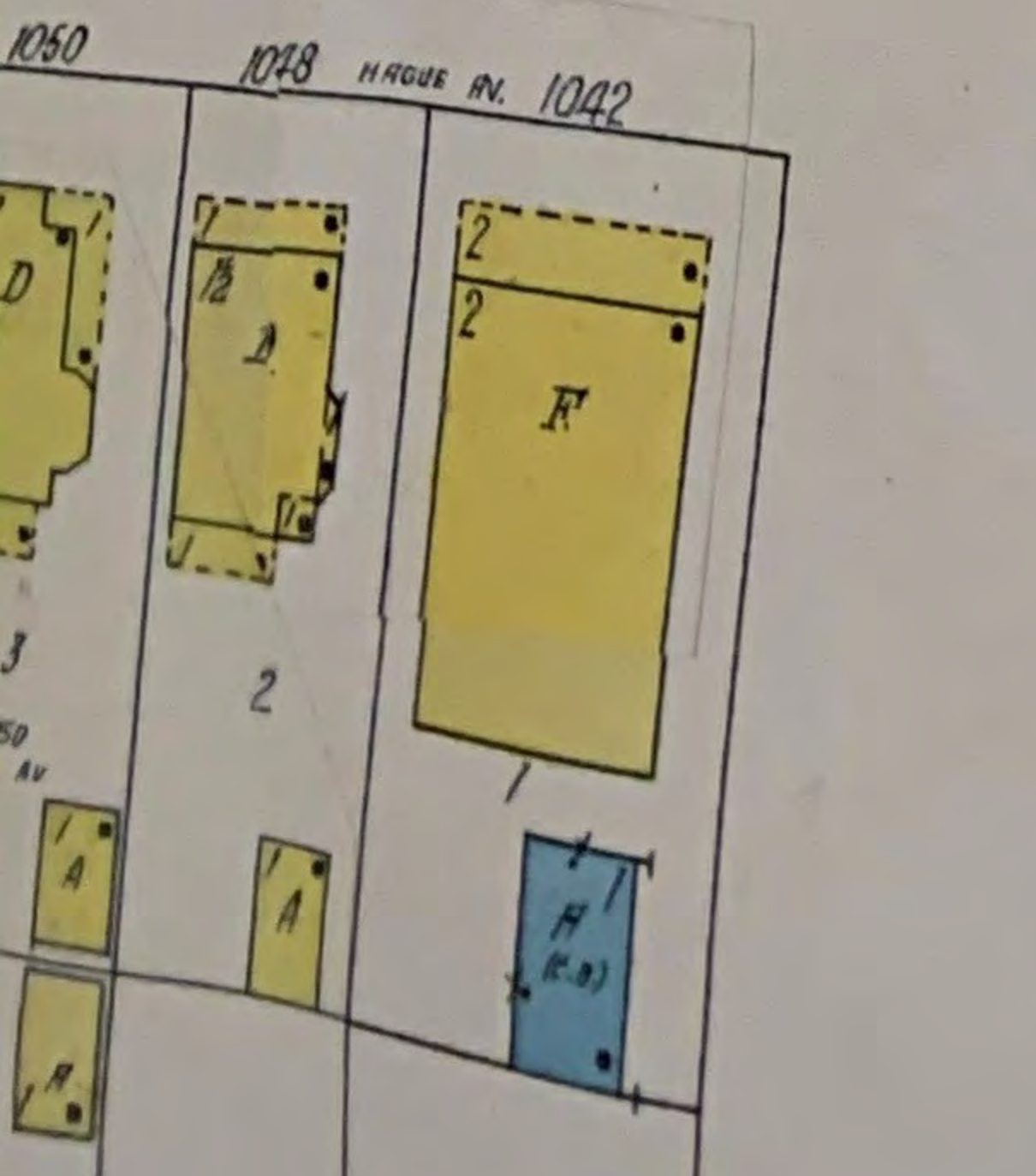
BUILT 1905-06-12.

BLOCK 5

378

377

AV.



6" W. PIPE

6" W. PIPE

6" W. PIPE

6" W. PIPE

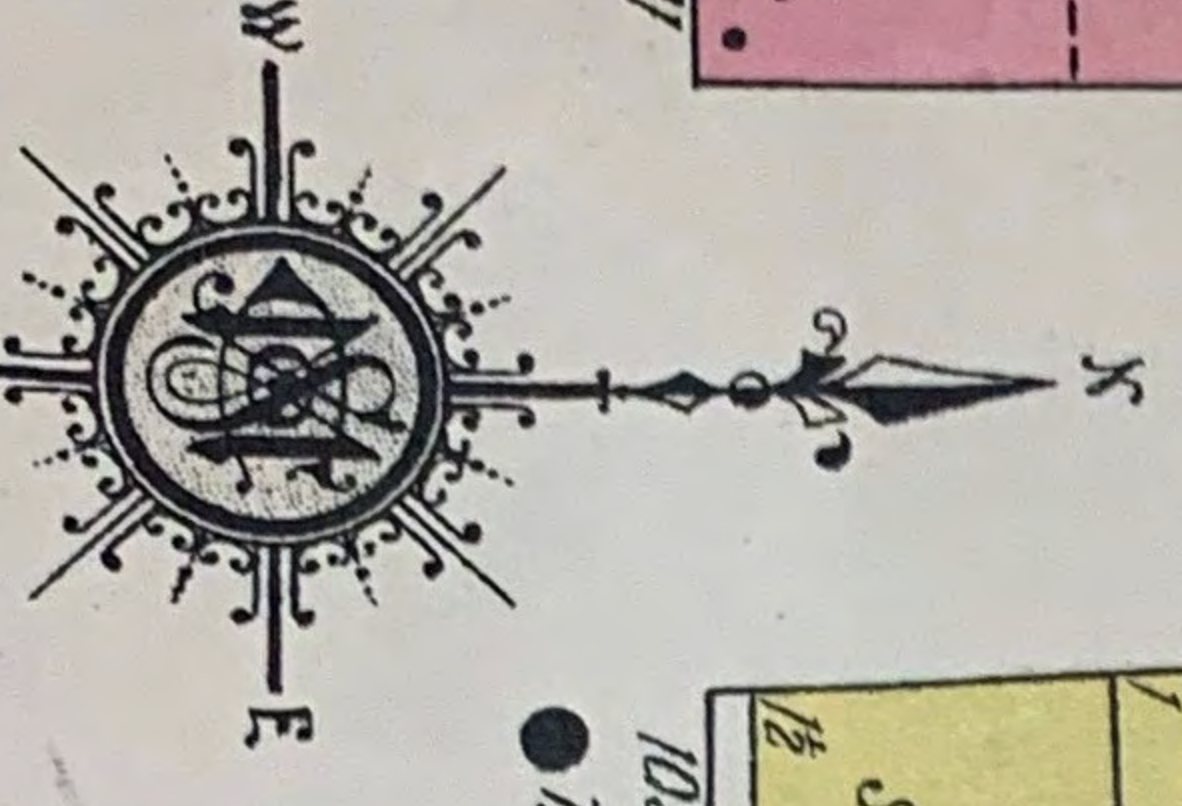
6" W. PIPE

6" W. PIPE

363

DAYTON AV.

SELBY AV.



6" W. PIPE 99

6" W. PIPE 08

6" W. PIPE 98

6" W. PIPE 08

1006

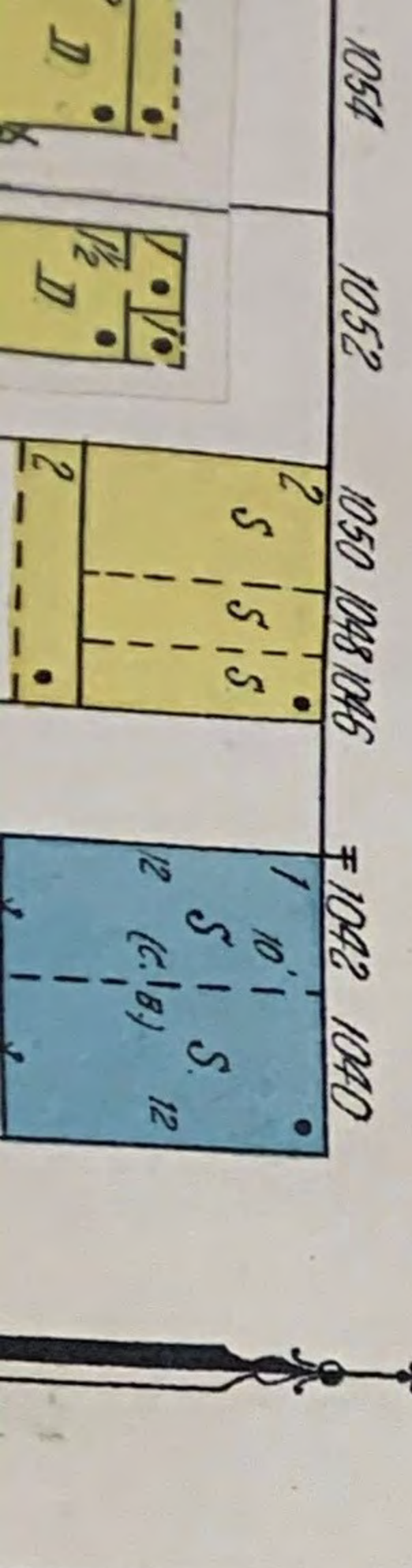
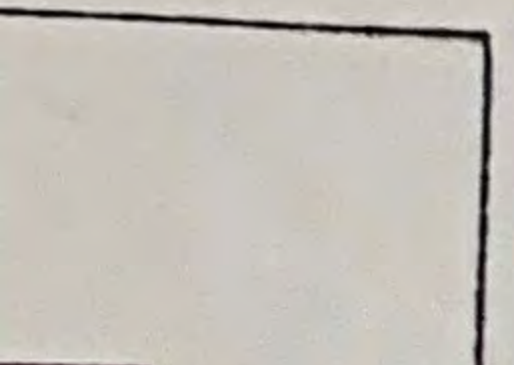
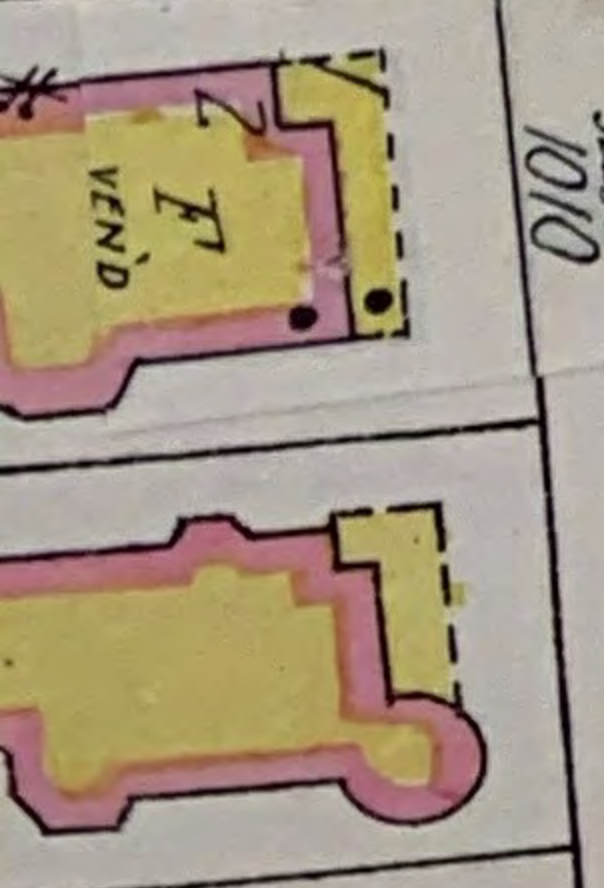
6

23

22

16

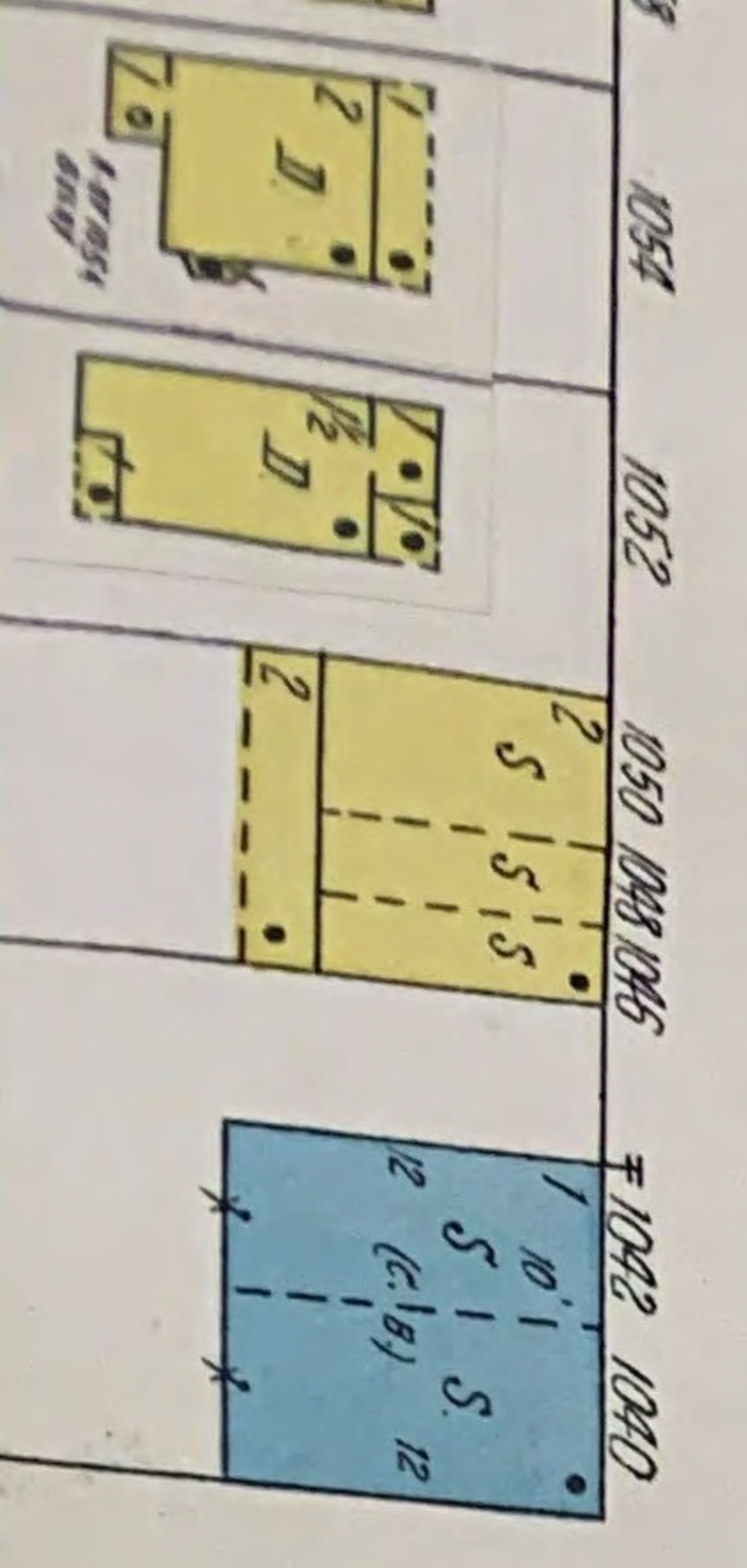
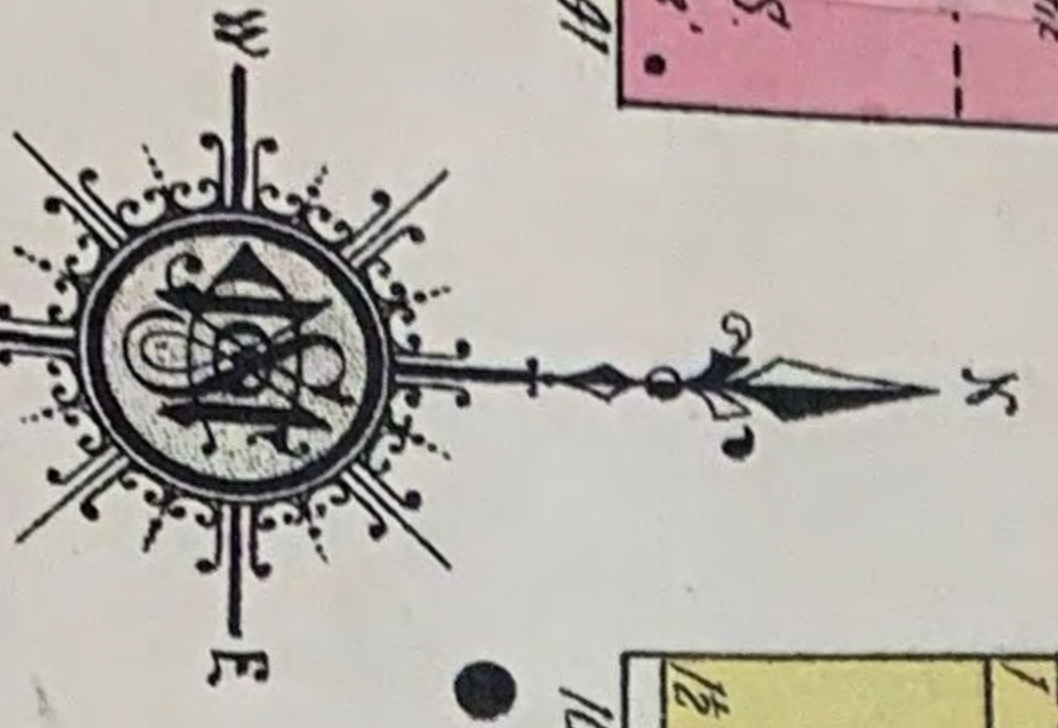
6" W. PIPE 08



363

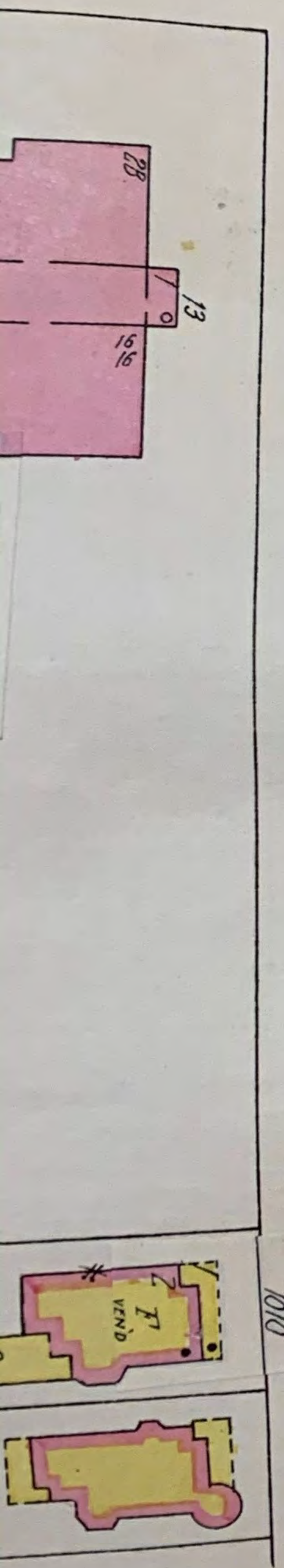
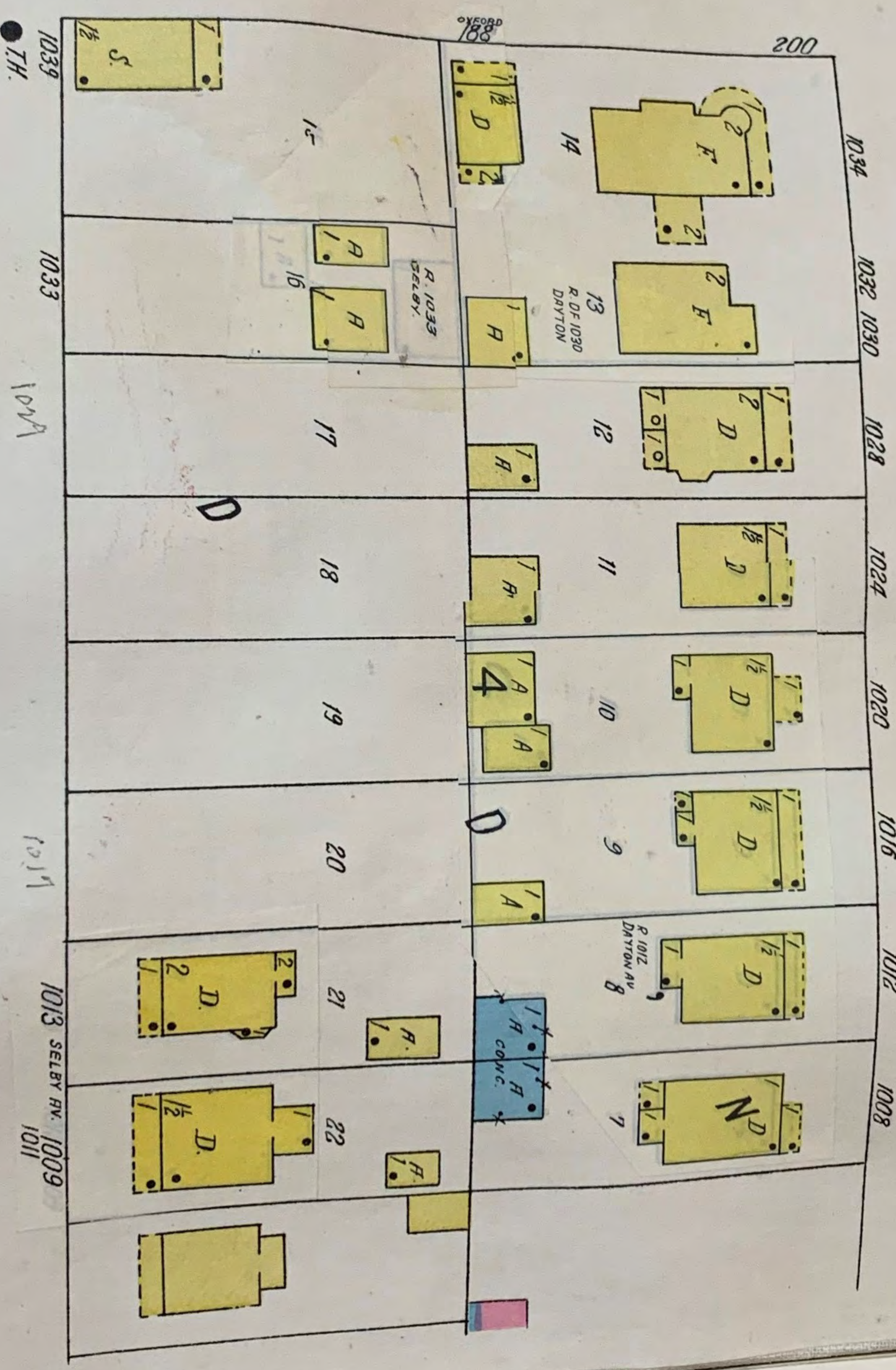
DAYTON AV.

SELBY AV.



6" W. PIPE 99

6" W. PIPE 88



6" W. PIPE 98

6" W. PIPE 87





Date: _____

Time: _____

Name: _____

Email Address: _____

Phone Number: _____

Collection	St. Paul Building Permit Number	St. Paul Building Permit Year	Pulled	Copy Scan	Charge
1	7239	1918			
2	48513	1907			
3	19396	1906			
4	19361				
5					
6					
7					
8					
9					
10					
11					
12					
13					
14					

Member: Yes _____ No _____

Discounts: Members receive 50% Discount

Total Charge

18	19	20	21	22	23	24	25	26	27	28	29	30	31	32	33	34	35	36	37	38	39	40	41	42	43	44	45	46	47	48	49	50	51	52	53	54	55	56	57	58	59	60	61	62	63	64	65	66	67	68	69	70	71	72	73	74	75	76	77	78	79	80	81	82	83	84	85	86	87	88	89	90	91	92	93	94	95	96	97	98	99	100
----	----	----	----	----	----	----	----	----	----	----	----	----	----	----	----	----	----	----	----	----	----	----	----	----	----	----	----	----	----	----	----	----	----	----	----	----	----	----	----	----	----	----	----	----	----	----	----	----	----	----	----	----	----	----	----	----	----	----	----	----	----	----	----	----	----	----	----	----	----	----	----	----	----	----	----	----	----	----	----	----	----	-----

1	2	3	4	5	6	7	8	9	10	11	12	13	14	15	16	17	18	19	20	21	22	23	24	25	26	27	28	29	30	31	32	33	34	35	36	37	38	39	40	41	42	43	44	45	46	47	48	49	50	51	52	53	54	55	56	57	58	59	60	61	62	63	64	65	66	67	68	69	70	71	72	73	74	75	76	77	78	79	80	81	82	83	84	85	86	87	88	89	90	91	92	93	94	95	96	97	98	99	100
---	---	---	---	---	---	---	---	---	----	----	----	----	----	----	----	----	----	----	----	----	----	----	----	----	----	----	----	----	----	----	----	----	----	----	----	----	----	----	----	----	----	----	----	----	----	----	----	----	----	----	----	----	----	----	----	----	----	----	----	----	----	----	----	----	----	----	----	----	----	----	----	----	----	----	----	----	----	----	----	----	----	----	----	----	----	----	----	----	----	----	----	----	----	----	----	----	----	----	-----

1	2	3	4	5	6	7	8	9	10	11	12	13	14	15	16	17	18	19	20	21	22	23	24	25	26	27	28	29	30	31	32	33	34	35	36	37	38	39	40	41	42	43	44	45	46	47	48	49	50	51	52	53	54	55	56	57	58	59	60	61	62	63	64	65	66	67	68	69	70	71	72	73	74	75	76	77	78	79	80	81	82	83	84	85	86	87	88	89	90	91	92	93	94	95	96	97	98	99	100
---	---	---	---	---	---	---	---	---	----	----	----	----	----	----	----	----	----	----	----	----	----	----	----	----	----	----	----	----	----	----	----	----	----	----	----	----	----	----	----	----	----	----	----	----	----	----	----	----	----	----	----	----	----	----	----	----	----	----	----	----	----	----	----	----	----	----	----	----	----	----	----	----	----	----	----	----	----	----	----	----	----	----	----	----	----	----	----	----	----	----	----	----	----	----	----	----	----	----	-----

EVAN LOTH
CHURCH
OF THE
REFORMERS

J. J. HILL
SCHOOL

FARM

ELP

SHS

V

MARSHALL BOULEVARD

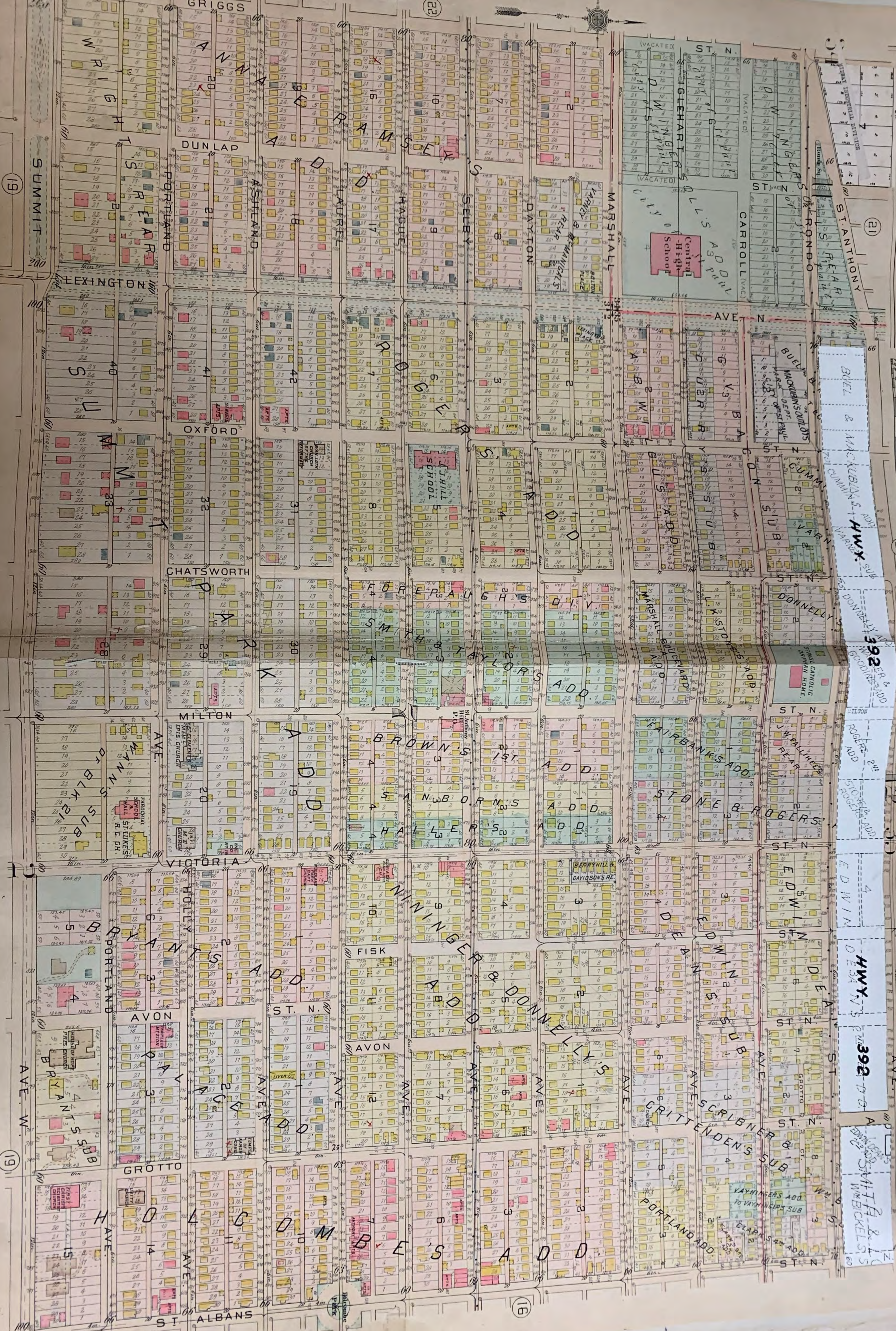
L. K. STONE

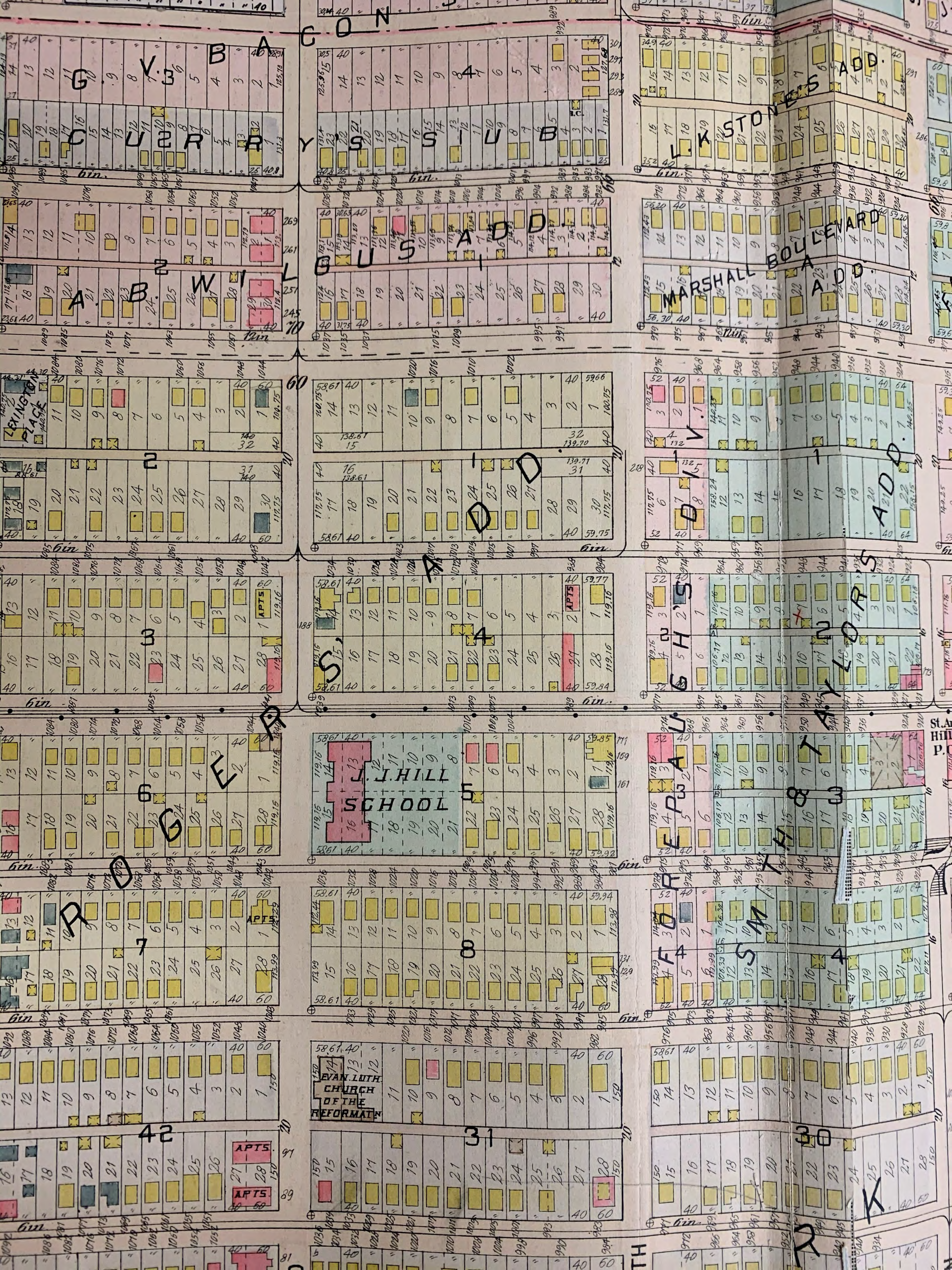
AWB

CURR

BUSS

Y





14	13	12	11	10	9	8	7	6	5	4	3	2	1
1099	1098	1097	1096	1095	1094	1093	1092	1091	1090	1089	1088	1087	1086

17	16	15	14	13	12	11	10	9	8	7	6	5	4	3	2	1
1085	1084	1083	1082	1081	1080	1079	1078	1077	1076	1075	1074	1073	1072	1071	1070	1069

18	17	16	15	14	13	12	11	10	9	8	7	6	5	4	3	2	1
1065	1064	1063	1062	1061	1060	1059	1058	1057	1056	1055	1054	1053	1052	1051	1050	1049	1048

13	12	11	10	9	8	7	6	5	4	3	2	1
1045	1044	1043	1042	1041	1040	1039	1038	1037	1036	1035	1034	1033

16	15	14	13	12	11	10	9	8	7	6	5	4	3	2	1	
1025	1024	1023	1022	1021	1020	1019	1018	1017	1016	1015	1014	1013	1012	1011	1010	1009

13	12	11	10	9	8	7	6	5	4	3	2	1
1005	1004	1003	1002	1001	1000	999	998	997	996	995	994	993

16	15	14	13	12	11	10	9	8	7	6	5	4	3	2	1	
985	984	983	982	981	980	979	978	977	976	975	974	973	972	971	970	969

14	13	12	11	10	9	8	7	6	5	4	3	2	1
125	124	123	122	121	120	119	118	117	116	115	114	113	112

15	14	13	12	11	10	9	8	7	6	5	4	3	2	1		
1025	1024	1023	1022	1021	1020	1019	1018	1017	1016	1015	1014	1013	1012	1011	1010	1009

14	13	12	11	10	9	8	7	6	5	4	3	2	1
1005	1004	1003	1002	1001	1000	999	998	997	996	995	994	993	992

15	14	13	12	11	10	9	8	7	6	5	4	3	2	1		
985	984	983	982	981	980	979	978	977	976	975	974	973	972	971	970	969

14	13	12	11	10	9	8	7	6	5	4	3	2	1
965	964	963	962	961	960	959	958	957	956	955	954	953	952

15	14	13	12	11	10	9	8	7	6	5	4	3	2	1		
945	944	943	942	941	940	939	938	937	936	935	934	933	932	931	930	929

15	14	13	12	11	10	9	8	7	6	5	4	3	2	1		
925	924	923	922	921	920	919	918	917	916	915	914	913	912	911	910	909

15	14	13	12	11	10	9	8	7	6	5	4	3	2	1		
915	914	913	912	911	910	909	908	907	906	905	904	903	902	901	900	899

14	13	12	11	10	9	8	7	6	5	4	3	2	1			
895	894	893	892	891	890	889	888	887	886	885	884	883	882	881	880	879

13	12	11	10	9	8	7	6	5	4	3	2	1				
875	874	873	872	871	870	869	868	867	866	865	864	863	862	861	860	859

12	11	10	9	8	7	6	5	4	3	2	1					
855	854	853	852	851	850	849	848	847	846	845	844	843	842	841	840	839

11	10	9	8	7	6	5	4	3	2	1						
835	834	833	832	831	830	829	828	827	826	825	824	823	822	821	820	819

10	9	8	7	6	5	4	3	2	1							
815	814	813	812	811	810	809	808	807	806	805	804	803	802	801	800	799

9	8	7	6	5	4	3	2	1								
795	794	793	792	791	790	789	788	787	786	785	784	783	782	781	780	779

1058	1057	1055	1052	1050	1047
24	25	26	27	28	29
40	40	40	40	40	40

1036	1033	1029	1024	1020	1018	1014	1010	1006	1004	1000	996	994	992	988	984	982
15	14	13	12	11	10	9	8	7	6	5	4	3	2	1	40	40
40	40	40	40	40	40	40	40	40	40	40	40	40	40	40	40	40

11243	11243	972	966	964	960
15	16	17	18	19	20
40	40	40	40	40	40

1067	1064	1060	1056	1050	1048	1044
24	25	26	27	28	29	30
40	40	40	40	40	40	40

1020	1016	1010	1002	996	992	988	984	982		
11	10	9	8	7	6	5	4	3	2	1
40	40	40	40	40	40	40	40	40	40	40

11243	11243	976	968	964	958
15	16	17	18	19	20
40	40	40	40	40	40

1065	1061	1056	1050	1048	1042	1040
22	23	24	25	26	27	28
40	40	40	40	40	40	40

1034	1030	1026	1024	1020	1016	1012	1008	1004	997	988	984		
14	13	12	11	10	9	8	7	6	5	4	3	2	1
40	40	40	40	40	40	40	40	40	40	40	40	40	40

11243	11243	976	968	964	958
15	16	17	18	19	20
40	40	40	40	40	40

1068	1064	1058	1054	1048	1044	1040
22	23	24	25	26	27	28
40	40	40	40	40	40	40

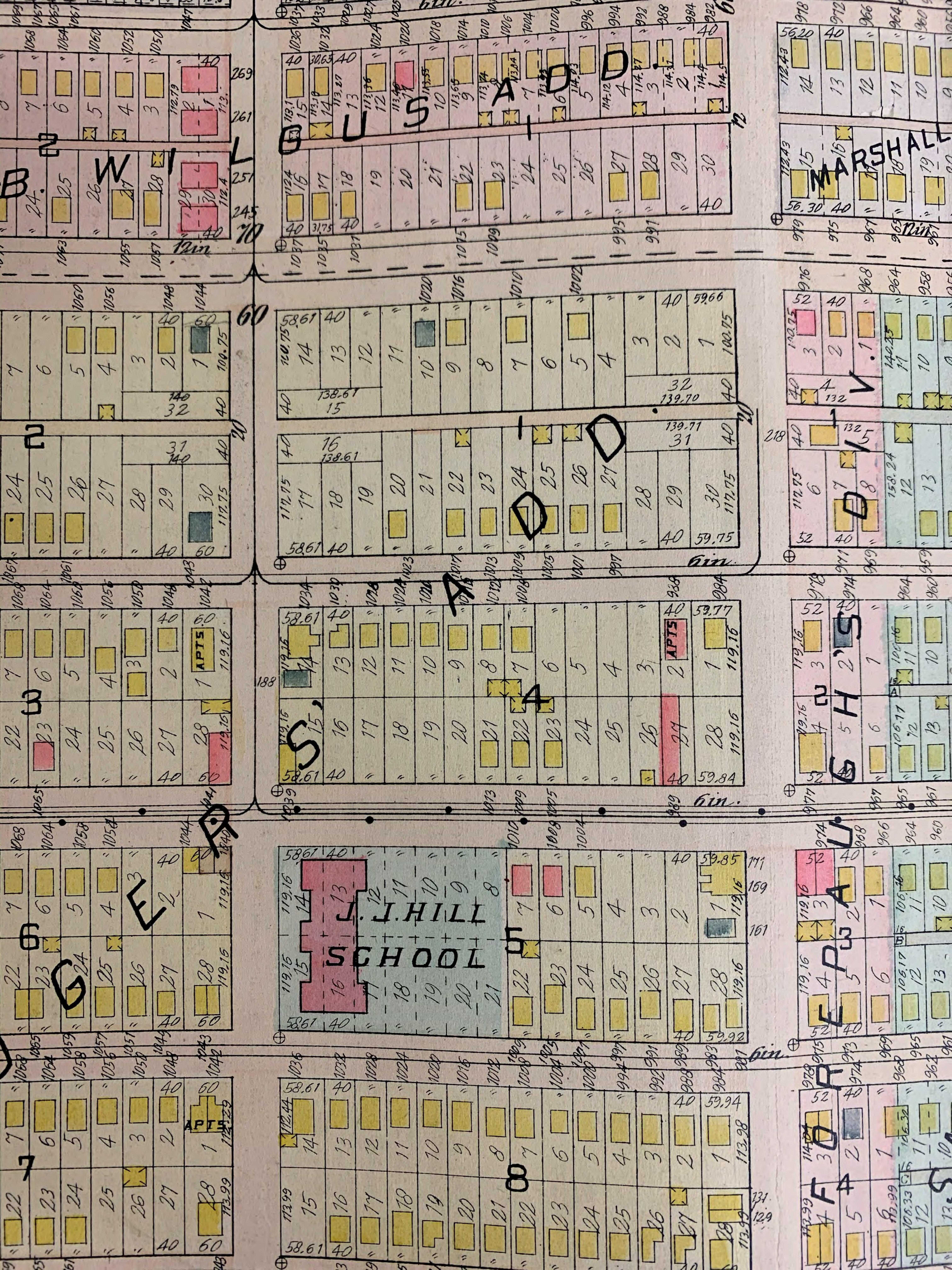
1010	1008	1004	1000	997	988	984	982
7	6	5	4	3	2	1	40
40	40	40	40	40	40	40	40

11243	11243	976	968	964	958
15	16	17	18	19	20
40	40	40	40	40	40

1058	1054	1050	1048	1044	1040	1036
22	23	24	25	26	27	28
40	40	40	40	40	40	40

1008	1004	1000	997	988	984	982	980
7	6	5	4	3	2	1	40
40	40	40	40	40	40	40	40

11243	11243	976	968	964	958
15	16	17	18	19	20
40	40	40	40	40	40



MIDWAY INDUSTRIAL DIVISION

21

BUEL & MACKUBINS ADD. HWY. SUB

55 DONNELLY ADD

ST. ANTHONY

REAR PAUL

RONDO

WINGERS

ST. VACIN

ST. ANTHONY

CARROLL (VAC)

GLEHART

WINGERS

ADD. ST. PAUL

Central High School

AVE.

MACKUBINS OUTLOTS

PARK DEPT. CITY OF ST. PAUL.

BUEL

CUMMINS

VARNY

DONNELLY

ST. ANTHONY

WINGERS

ST. PAUL

GLEHART

WINGERS

MARSHALL

VARNY

REAR

MC MANIGALS

DAYTON

SSELBY

WAGUE

LAUREL

ASHLAND

GRIGGS

DUNLAP

PORTLAND

SERRA

ALEXINGTON

SUMMIT

BUEL

MACKUBINS OUTLOTS

PARK DEPT. CITY OF ST. PAUL.

BUEL

CUMMINS

VARNY

DONNELLY

ST. ANTHONY

WINGERS

ST. PAUL

GLEHART

WINGERS

BUEL & MACKUBINS ADD. HWY. SUB

CUMMINS

VARNY

DONNELLY

ST. ANTHONY

WINGERS

ST. PAUL

GLEHART

WINGERS

MARSHALL

VARNY

REAR

MC MANIGALS

DAYTON

SSELBY

WAGUE

LAUREL

ASHLAND

GRIGGS

DUNLAP

PORTLAND

SERRA

ALEXINGTON

SUMMIT

BUEL & MACKUBINS ADD. HWY. SUB

CUMMINS

VARNY

DONNELLY

ST. ANTHONY

WINGERS

ST. PAUL

GLEHART

WINGERS

MARSHALL

VARNY

REAR

MC MANIGALS

DAYTON

SSELBY

WAGUE

LAUREL

ASHLAND

GRIGGS

DUNLAP

PORTLAND

SERRA

ALEXINGTON

SUMMIT

MARSHALL

VARNY

REAR

MC MANIGALS

DAYTON

SSELBY

WAGUE

LAUREL

ASHLAND

GRIGGS

DUNLAP

PORTLAND

SERRA

ALEXINGTON

SUMMIT

BUEL & MACKUBINS ADD. HWY. SUB

CUMMINS

VARNY

DONNELLY

ST. ANTHONY

WINGERS

ST. PAUL

GLEHART

WINGERS

MARSHALL

VARNY

REAR

MC MANIGALS

DAYTON

SSELBY

WAGUE

LAUREL

ASHLAND

GRIGGS

DUNLAP

PORTLAND

SERRA

ALEXINGTON

SUMMIT

MARSHALL

VARNY

REAR

MC MANIGALS

DAYTON

SSELBY

WAGUE

LAUREL

ASHLAND

GRIGGS

DUNLAP

PORTLAND

SERRA

ALEXINGTON

SUMMIT

BUEL & MACKUBINS ADD. HWY. SUB

CUMMINS

VARNY

DONNELLY

ST. ANTHONY

WINGERS

ST. PAUL

GLEHART

WINGERS

MARSHALL

VARNY

REAR

MC MANIGALS

DAYTON

SSELBY

WAGUE

LAUREL

ASHLAND

GRIGGS

DUNLAP

PORTLAND

SERRA

ALEXINGTON

SUMMIT

MARSHALL

VARNY

REAR

MC MANIGALS

DAYTON

SSELBY

WAGUE

LAUREL

ASHLAND

GRIGGS

DUNLAP

PORTLAND

SERRA

ALEXINGTON

SUMMIT

BUEL & MACKUBINS ADD. HWY. SUB

CUMMINS

VARNY

DONNELLY

ST. ANTHONY

WINGERS

ST. PAUL

GLEHART

WINGERS



22

23

19