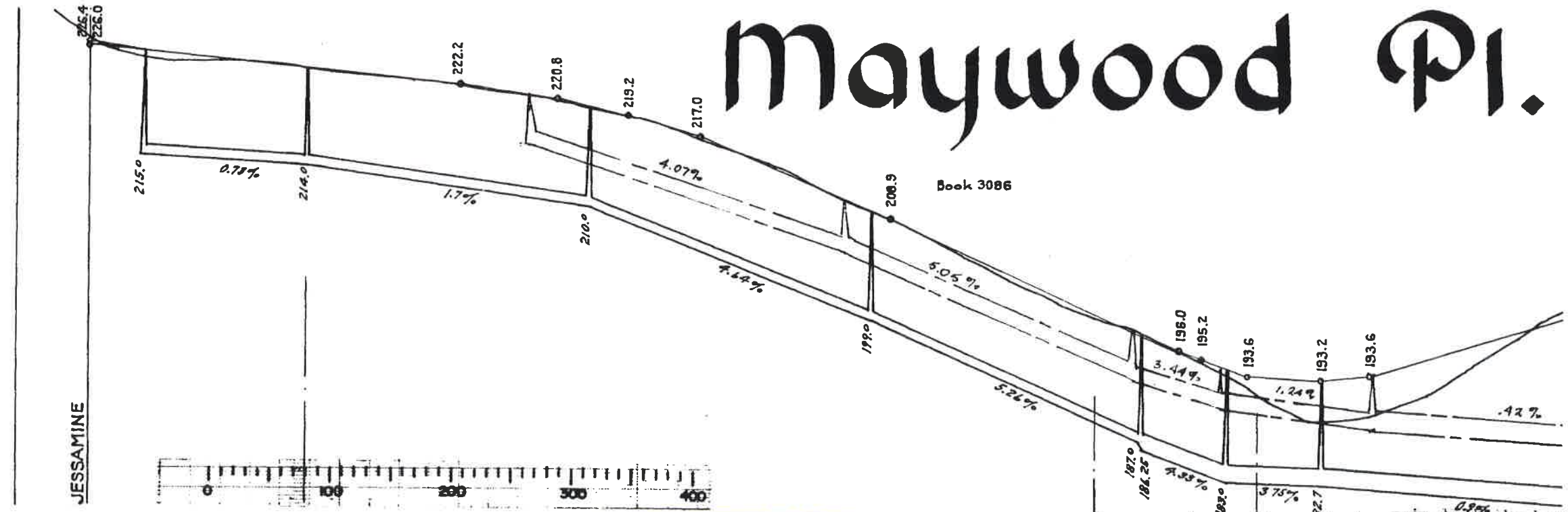
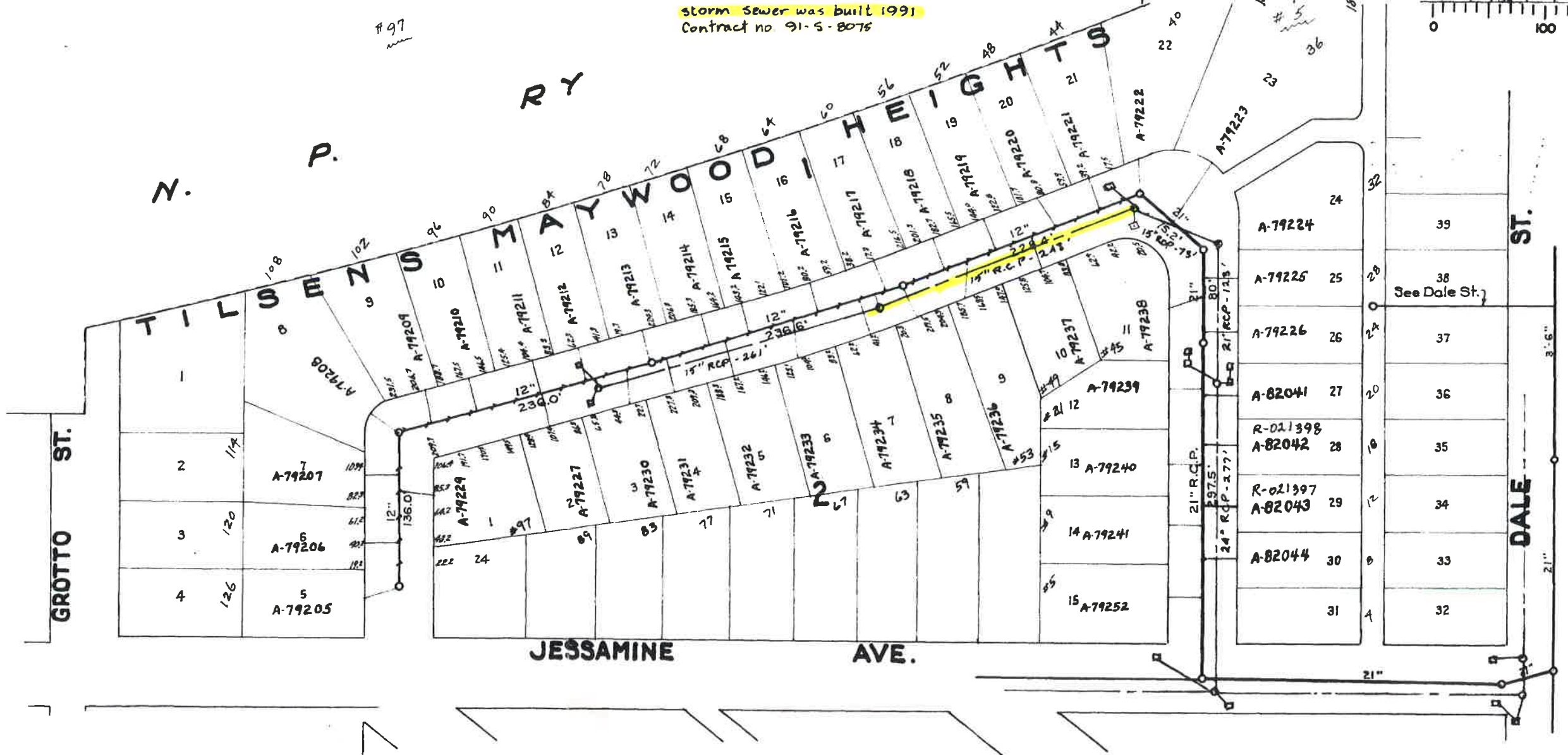


Maywood Pl.



storm sewer was built 1991
Contract no 91-S-8076



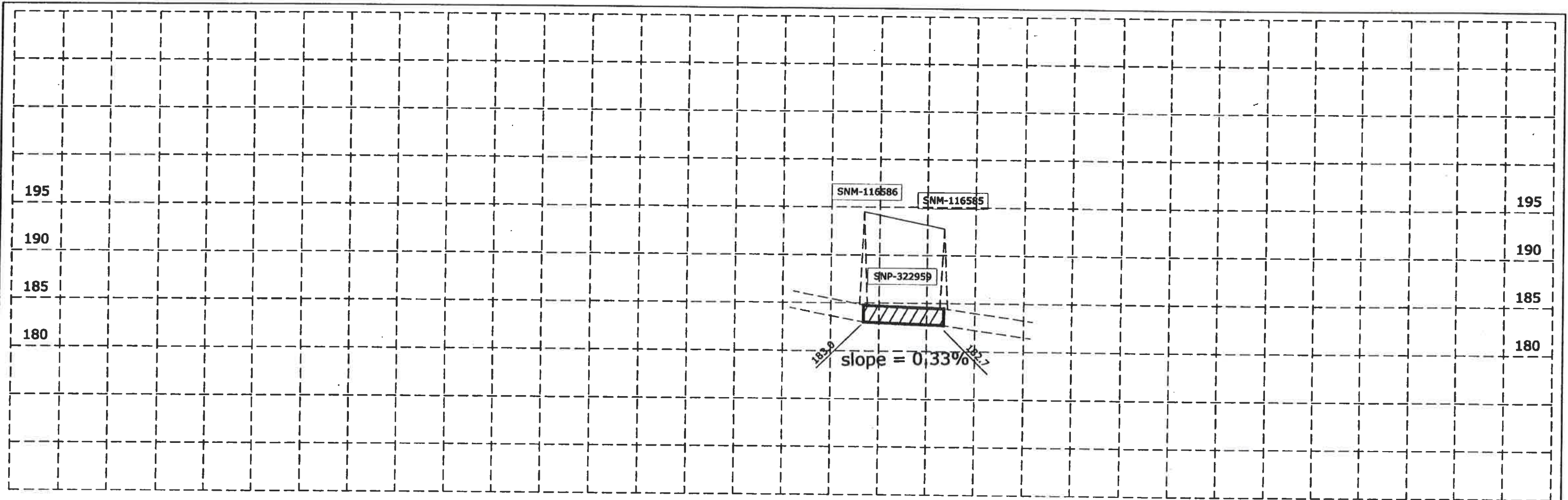
N. P. R. Y
TILSON
MAYWOOD HEIGHTS

A-79224	24	39
A-79225	25	38 See Dale St.
A-79226	26	37
A-82041	27	36
R-021398 A-82042	28	35
R-021397 A-82043	29	34
A-82044	30	33
	31	32

GROTTO ST.

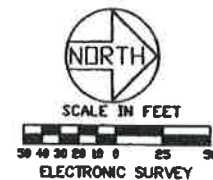
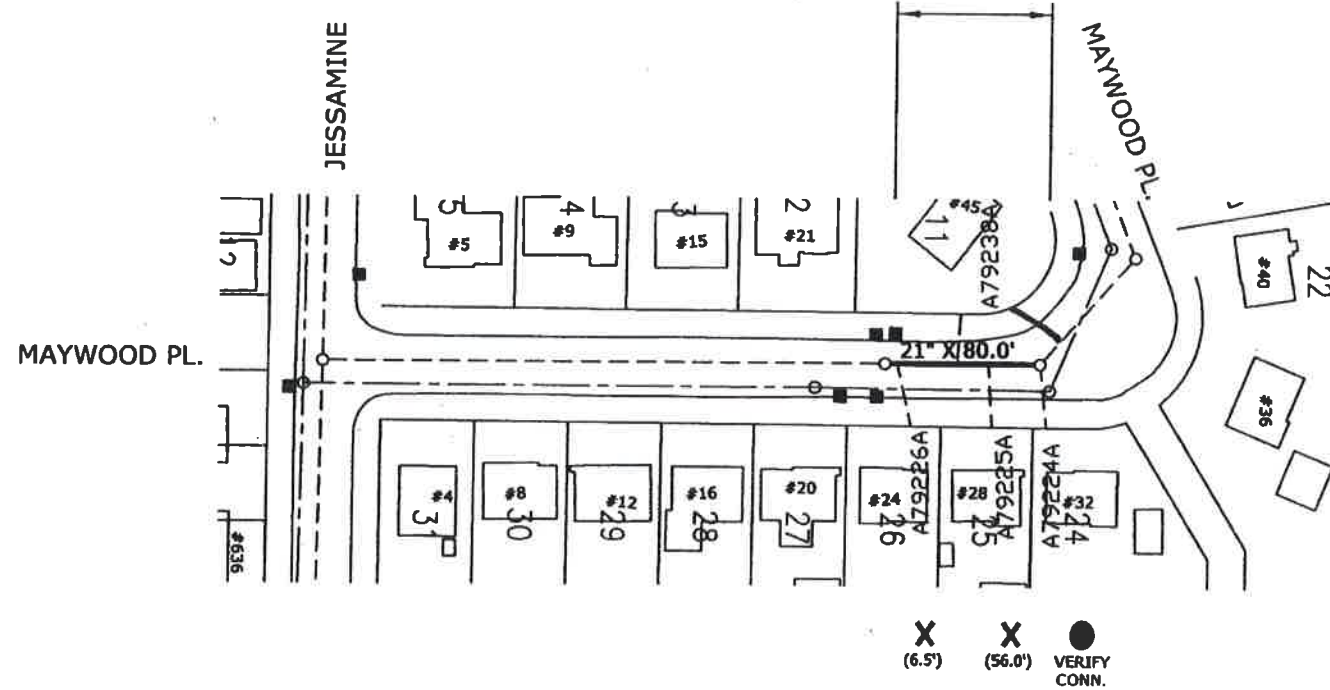
JESSAMINE AVE.

DALE ST.



- = INSTALL PIPE LINING
- = SANITARY SEWER
- = STORM SEWER
- X** = RESTORE SERVICE CONNECTION
- ▲** = IDENTIFY SEWER SERVICE BY DYE TESTING AND RESTORE SERVICE CONNECTION
- = VERIFY CONNECTION TO M.H.

INSTALL 80.0 L.F. 21" PIPE LINING (9.0mm)



**AS
BUILT**

Morgan / Hague Sewer Lining
37 OF 58
13664

MAYWOOD PLACE
Jessamine to Maywood

	DESIGNED	P.J.L.	I HEREBY CERTIFY THAT THIS PLAN, SPECIFICATION OR REPORT WAS PREPARED BY ME OR UNDER MY DIRECT SUPERVISION AND THAT I AM A DULY LICENSED PROFESSIONAL ENGINEER UNDER THE LAWS OF THE STATE OF MINNESOTA Signed: <i>Aaron D. Hass</i> Aaron D. Hass Date: 7/6/12 Lic. No. 28424	PREPARED BY THE SEWER DESIGN DIVISION FOR THE CITY OF ST. PAUL, DEPARTMENT OF PUBLIC WORKS	PROJECT: 12-S-2001	STRIP MAP NUMBER 2691
	DRAWN	P.J.L.		MORGAN/HAGUE SEWER LINING	DRAWER: 10	CAD LOCATION: Z:\SEWERS\PROJECTS\2012\S-2001\MORGAN/HAGUE\#37
	APPROVED	ADH		TO M.H.	DWG. NO. 5481	DRAWN ON: 6/27/12