

Date: July 13, 2018
File #: 15 - 143009
Folder Name: 935 FOREST ST AKA 935 SIMS
PIN: 282922320030



Date: July 13, 2018
File #: 15 - 143009
Folder Name: 935 FOREST ST AKA 935 SIMS
PIN: 282922320030



Date: July 13, 2018
File #: 15 - 143009
Folder Name: 935 FOREST ST AKA 935 SIMS
PIN: 282922320030



Date: July 13, 2018
File #: 15 - 143009
Folder Name: 935 FOREST ST AKA 935 SIMS
PIN: 282922320030



Date: July 13, 2018
File #: 15 - 143009
Folder Name: 935 FOREST ST AKA 935 SIMS
PIN: 282922320030



Date: July 13, 2018
File #: 15 - 143009
Folder Name: 935 FOREST ST AKA 935 SIMS
PIN: 282922320030



Date: July 13, 2018
File #: 15 - 143009
Folder Name: 935 FOREST ST AKA 935 SIMS
PIN: 282922320030



Date: July 13, 2018
File #: 15 - 143009
Folder Name: 935 FOREST ST AKA 935 SIMS
PIN: 282922320030



Date: July 13, 2018
File #: 15 - 143009
Folder Name: 935 FOREST ST AKA 935 SIMS
PIN: 282922320030



Date: July 13, 2018
File #: 15 - 143009
Folder Name: 935 FOREST ST AKA 935 SIMS
PIN: 282922320030



Date: July 13, 2018
File #: 15 - 143009
Folder Name: 935 FOREST ST AKA 935 SIMS
PIN: 282922320030



Date: July 13, 2018
File #: 15 - 143009
Folder Name: 935 FOREST ST AKA 935 SIMS
PIN: 282922320030



Date: July 13, 2018
File #: 15 - 143009
Folder Name: 935 FOREST ST AKA 935 SIMS
PIN: 282922320030



Date: July 13, 2018
File #: 15 - 143009
Folder Name: 935 FOREST ST AKA 935 SIMS
PIN: 282922320030

PROVIDED WITH

20752 64185

SERIAL NO. Q221843855	MFG. DATE: 30MAY2018
MODEL NO. XG40106EC36U1	Cap. U.S. Gals. 40
Input BTUH 36 000	TYPE GAS - NATURAL
Gas PRESS IN W.C. - Manifold - 4.0	Max. Inlet - 10.5 Min. Inlet - 5.5
ANSI Z21.10.1 • CSA 4.1-2014 CATEGORY I NATURAL DRAFT	

MINIMUM CLEARANCES FROM COMBUSTIBLE OR NONCOMBUSTIBLE CONSTRUCTION: 1" Sides and 0" rear in a closet - 0" Sides and rear in an alcove 3" front of control to closet door 12" from top pan to ceiling
May be installed in an alcove or closet and on combustible flooring.

CERTIFIED FOR INSTALLATIONS UP TO 8400 FT. ALTITUDE
MAX WORKING PRESSURE 150 PSI

DESIGN CERTIFIED

ALDI CERTIFIED

ASSEMBLED IN MEXICO

Abcom Sales Company, Inc.
Water Heating Division
Montgomery, Alabama 36117 USA

A WARNING

FOR YOUR SAFETY

For Safe Flood and Instructions, contact the...
This appliance with local codes, the National Z223.1/NFPA 54 or and Propane install Installation in Manual Home).
Water Leakage - Run from which a water head will at some time leak, the action of water. This water located in an area where no such area cannot be avoided, it drained, be installed under the See Use and Care Manual.
CAUTION - Hot water causes scald injury. Refer to Scald Injury in this water heater. See Use and Care Manual for instructions before changing the tank settings.
WARNING - Any thermostat setting above 125°F may cause severe burns and discomfort energy unnecessarily.

Date: July 13, 2018
File #: 15 - 143009
Folder Name: 935 FOREST ST AKA 935 SIMS
PIN: 282922320030



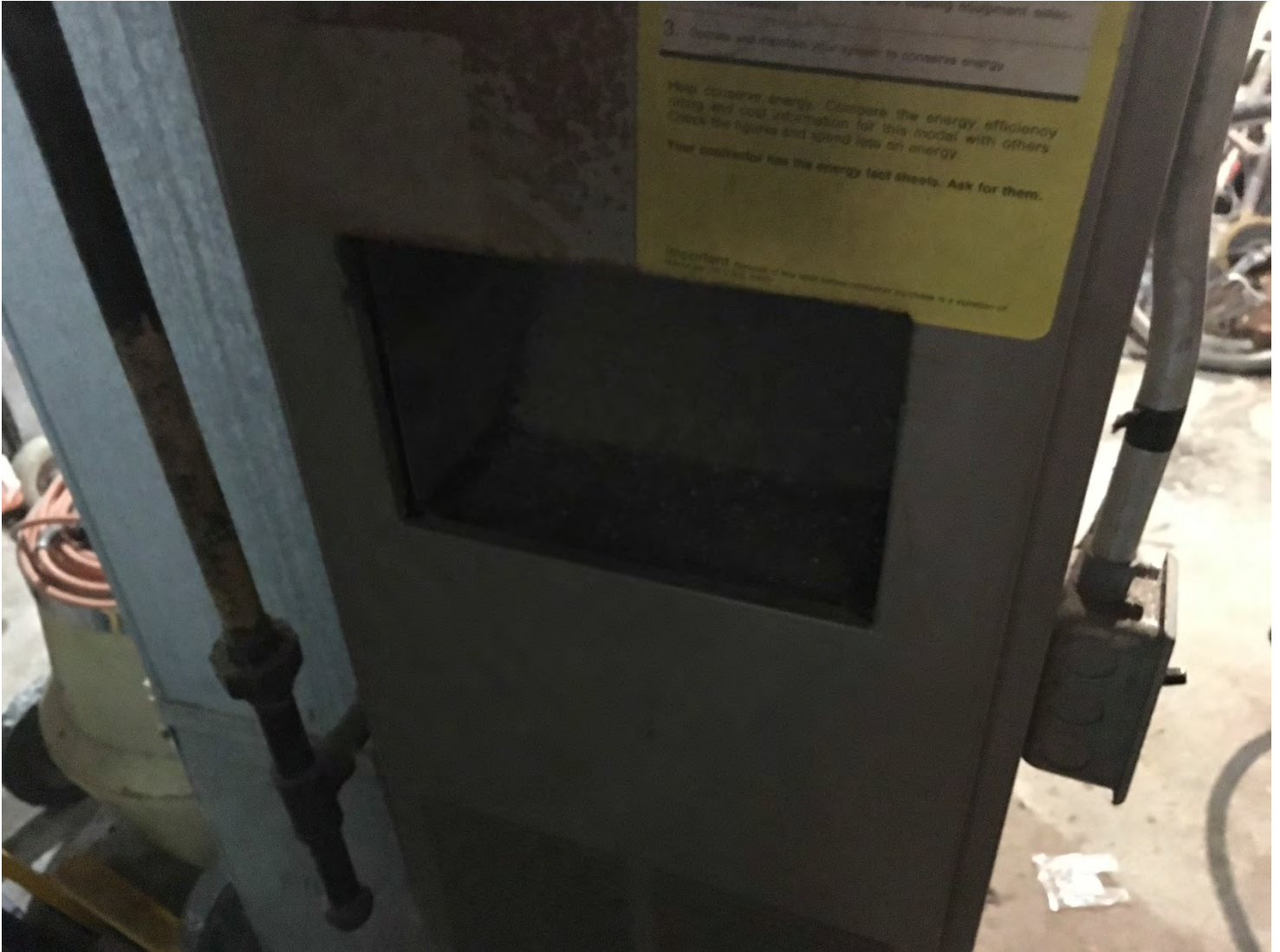
Date: July 13, 2018
File #: 15 - 143009
Folder Name: 935 FOREST ST AKA 935 SIMS
PIN: 282922320030



Date: July 13, 2018
File #: 15 - 143009
Folder Name: 935 FOREST ST AKA 935 SIMS
PIN: 282922320030

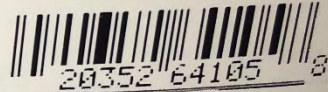


Date: July 13, 2018
File #: 15 - 143009
Folder Name: 935 FOREST ST AKA 935 SIMS
PIN: 282922320030



Date: July 13, 2018
File #: 15 - 143009
Folder Name: 935 FOREST ST AKA 935 SIMS
PIN: 282922320030

SERIAL NO. Q161840340 MFG DATE: 18APR2018
MODEL NO. XG40T06EC36U1 Cap. U.S. Gals. 40
Input BTUH 36,000 TYPE GAS - NATURAL
Gas PRESS. IN. W.C. - Manifold - 4.0 Max. Inlet - 10.5 Min. Inlet - 5.5
ANSI Z21.10.1 • CSA 4.1-2014 CATEGORY I NATURAL DRAFT



Manufacturer's Rating Label



MINIMUM CLEARANCES FROM COMBUSTIBLE OR NONCOMBUSTIBLE CONSTRUCTION. 1" Sides and 0" rear in a closet - 0" Sides and rear in an alcove. 3" front of control to closet door
12" from top pan to ceiling
May be installed in an alcove or closet and on combustible flooring.

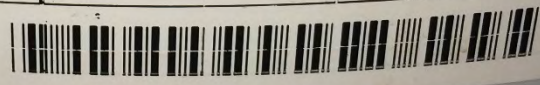
CERTIFIED FOR INSTALLATIONS UP TO 8400 FT. ALTITUDE

MAX WORKING PRESSURE 150 PSI



ASSEMBLED IN MEXICO

Rheem Sales Company, Inc.
Water Heating Division
Montgomery, Alabama 36117 USA



HA
Wa
from
will a
action
located
damage
such area
mended to
drained, be
See Use and
CAUTION - No
scald injury. Be
on this water he
for inspection
new setting.