

Inspection Report

Date: 05/11/2018  
Inspector: David Eide  
License Address: 1202 Dale St N  
Licensee/ Violator: Bee Lee & Tou Yang, d/b/a MC Auto Repair & Tire Services  
License Number: 20160000541  
Violation: License Conditions 1, 2, 3, 4, 5, 6, 11, and 17

Condition 1: 24 vehicles were parked on the lot, 18 are permitted.

Condition 2: Cones and a vehicle were blocking the driveway to Dale Street.

Condition 3: The lot is not striped and landscaped in accordance with the 7/13/2016 site plan. The 8 foot wide landscaped area must contain 4 medium sized trees along Dale Street. These trees were not present during the site visit.

Condition 4: A white inoperable van was stored on the lot. Blocks were around the wheels ensuring that the vehicle didn't roll away. Other vehicles on the lot were questionable as to whether they were inoperable or not.

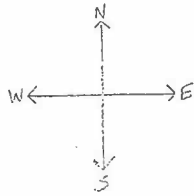
Condition 5: Exterior storage was in various locations on the lot. A large pile of tires was stored on the north side of the building.

Condition 6: Major body parts were missing on three vehicles. Vehicles on the lot must appear to be completely assembled with no major body parts missing.

Condition 11: No sign permit on file for the business sign on the south side of the building. This condition states that a sign permit application is required for all exterior signs visible from the public right-of-way.

Condition 17: The tires displayed outdoors were not confined to the approved display area on the southwest corner of the property. Tires were on the north side of the building and stacked on the south side of the building in front of the garage doors.

Visited site at 4:30PM in response to a complaint regarding too many vehicles on the lot. Found that the business had too many vehicles. The business was in violation of eight of their license conditions.

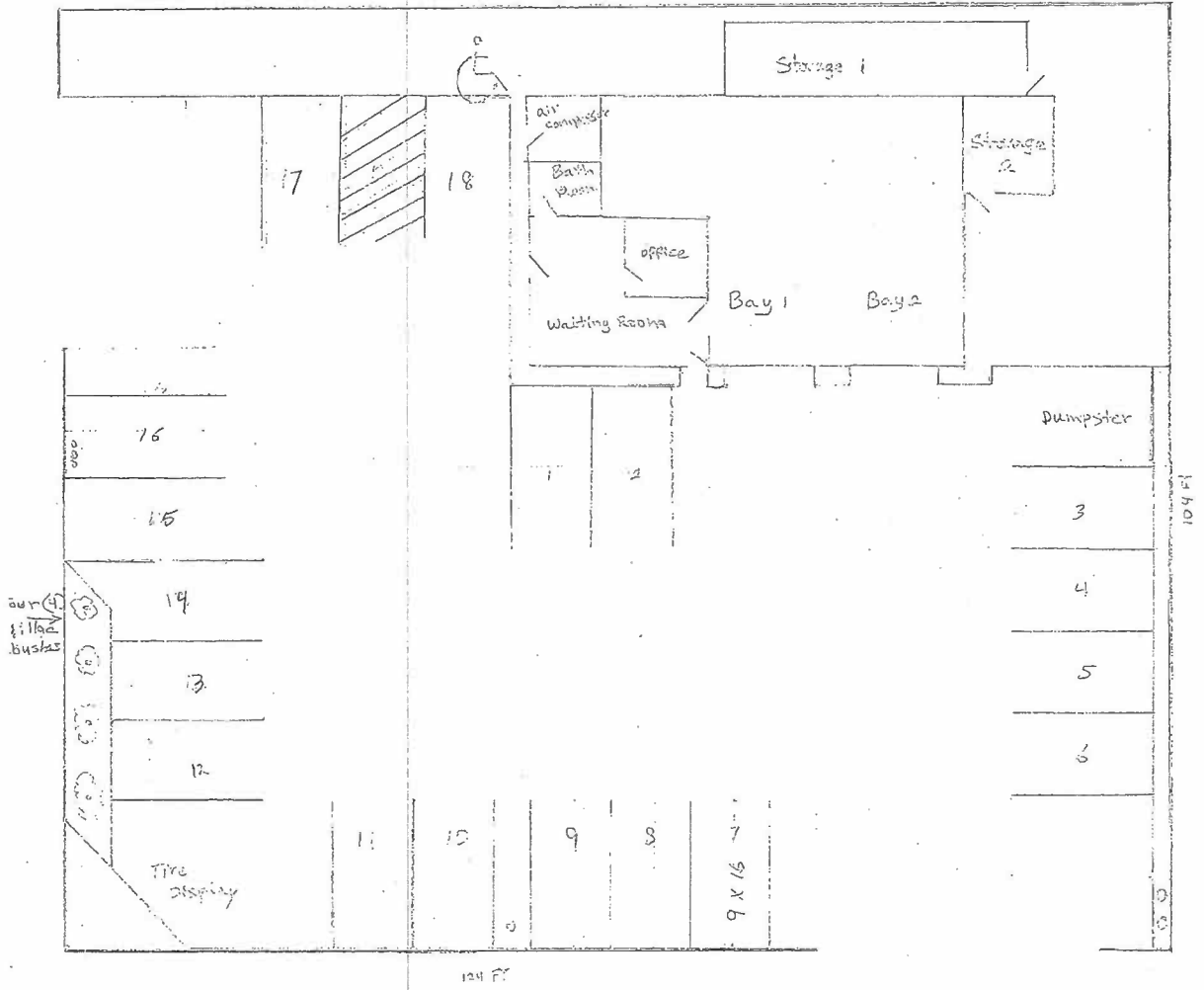


MC Auto  
1200 Dale St. N.  
St. Paul MN 55117

~~Two feet per square~~  
Reduced from  
original plan size  
*SM*

**SITE PLAN APPROVED**

OFFICE OF DSM  
CITY OF ST. PAUL  
Karen Zarbo  
File #            Date 7-13-16  
Any alterations from this plan must be  
approved by the Zoning Administrator.





Condition #1: Maximum of 18 vehicles allowed. 24 vehicles were outside on property during site visit. Only 4 vehicles are permitted along the alley, per 7-13-16 site plan.

6

Condition #3: Lot not striped according to site plan.



Condition #1: Vehicles not parked according to site plan. Camper was parked in handicap loading zone.

Condition #5: No exterior storage of vehicle parts, tires, oil, batteries, or similar items.

Condition #4: No exterior storage of inoperable vehicles. (This white van had blocks around the tires to prevent the vehicle from rolling away.)



Condition #3: Lot must be striped and landscaped in accordance with 7/13/16 site plan. Four medium sized trees must be installed along Dale and are missing.

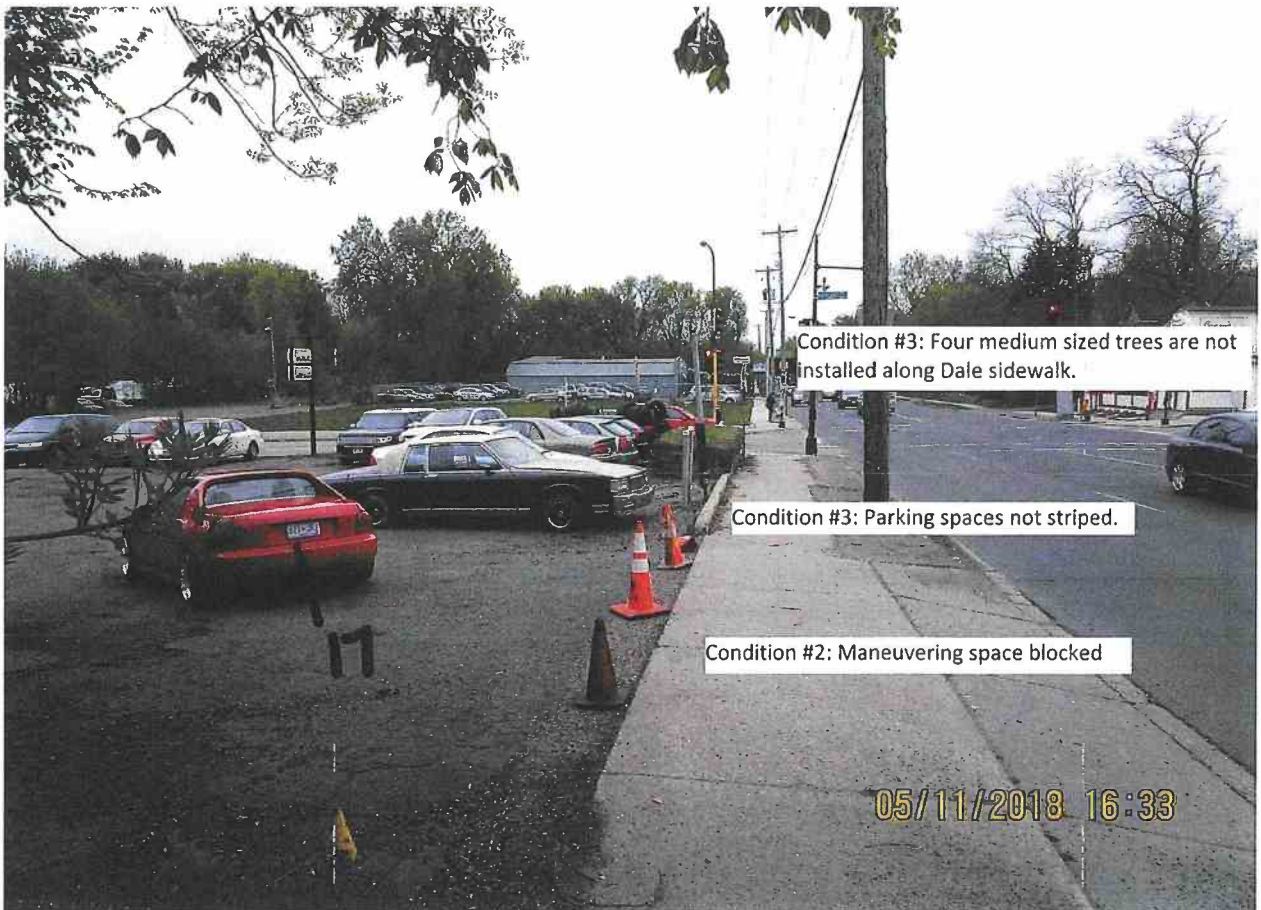


Condition #2: Maneuvering space must be provided. (Driveway blocked with cones and vehicle.)

Condition #3: Lot not striped as indicated in 7/13/16 site plan.

Condition #4: No exterior storage on inoperable vehicles.

Condition #6: All vehicles parked outdoors on the lot must appear to be completely assembled with no major body parts missing.





Condition #4: No exterior storage of inoperable vehicles.  
(Snowmobile)

Condition #6: All vehicles parked outdoors must appear to be completely assembled with no major body parts missing.

05/11/2018 16:35

Condition #1: License holder is limited to 18 vehicles parked on exterior. 24 vehicles were on premises at time of inspection. Vehicles not parked according to site plan.



05/11/2018 16:35

Condition #5: No exterior storage of vehicle parts,tires,oil, batterles, or similar items.

Condition #17: Tires displayed outdoors for sale must be confined to area shown on the approved site plan. This area behind the building was not approved as an area for display.



Condition #5: No exterior storage of vehicle parts.

**Condition #1:** Vehicles must be parked according to site plan. Handicap space was blocked in by white vehicle and loading zone was occupied by a camper.

**Condition #3:** Site plan not striped according to 7/13/2016 site plan. Handicap space not striped, nor loading zone hatched.



**Condition #1:** Vehicles not parked according to site plan. (Camper parked in handicap loading zone.)

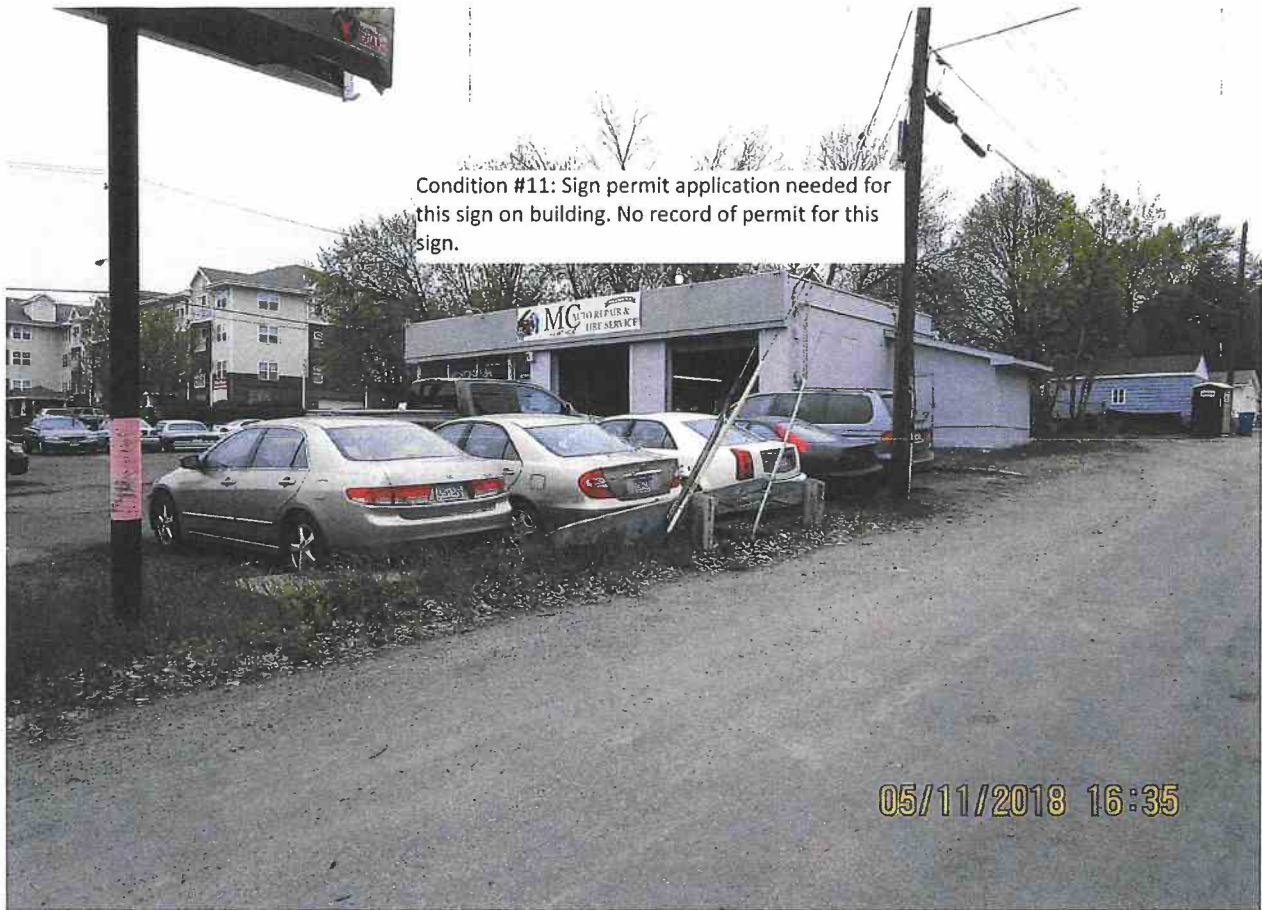
**Condition #3:** Parking lot not striped according to site plan. (Handicap loading zone must be hashed indicating "no parking.")

**Condition #5:** No exterior storage of vehicle parts, tires, or similar. Trash must be in covered dumpster or inside building.

**Condition #17:** Tires displayed outdoors must be confined to area shown on approved site plan dated 7/13/2016.







Condition #11: Sign permit application needed for this sign on building. No record of permit for this sign.

05/11/2018 16:35

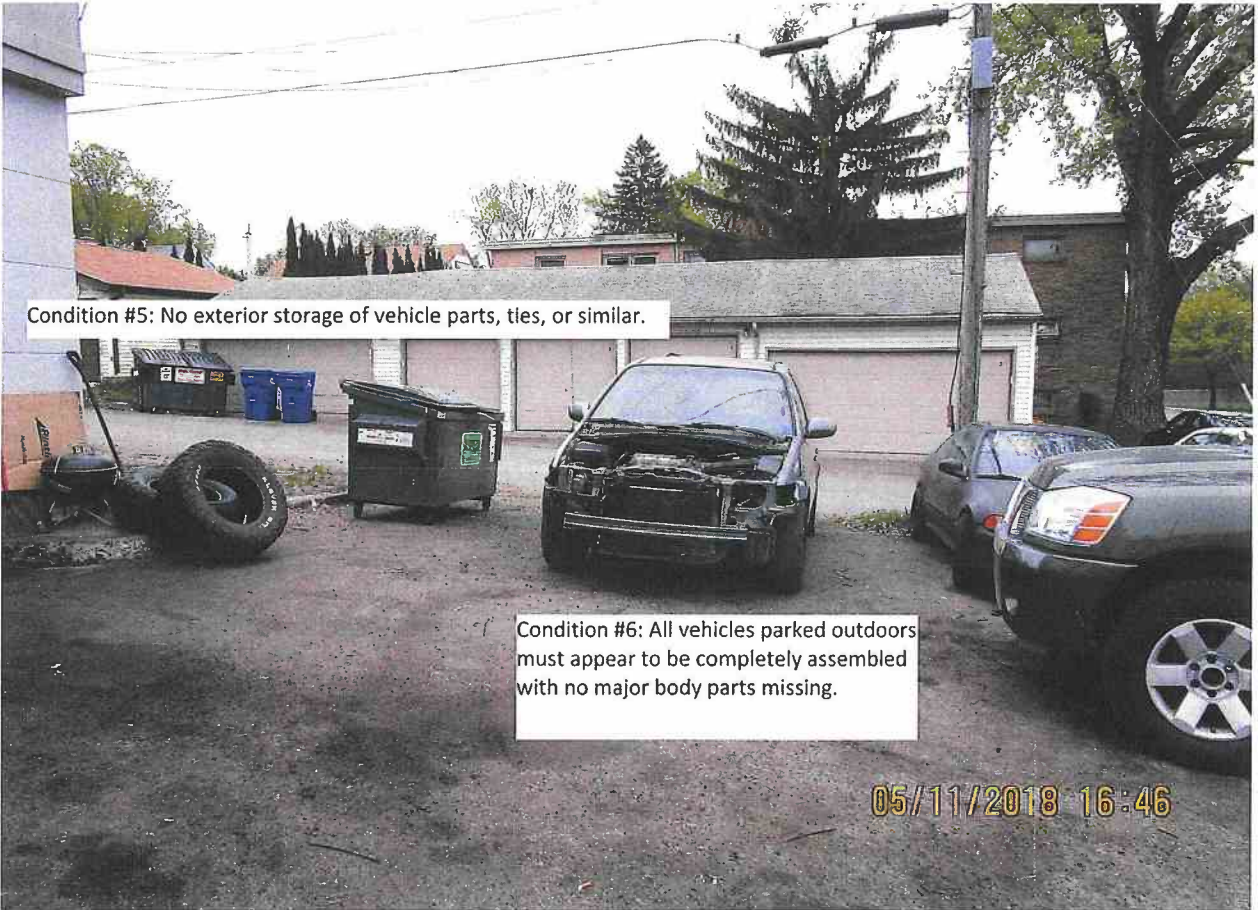


Condition #5: No exterior storage of vehicle parts. All trash must be stored in covered dumpster or indoors.

05/11/2018 16:37



05/11/2018 16:38



Condition #5: No exterior storage of vehicle parts, ties, or similar.

Condition #6: All vehicles parked outdoors must appear to be completely assembled with no major body parts missing.

05/11/2018 16:46