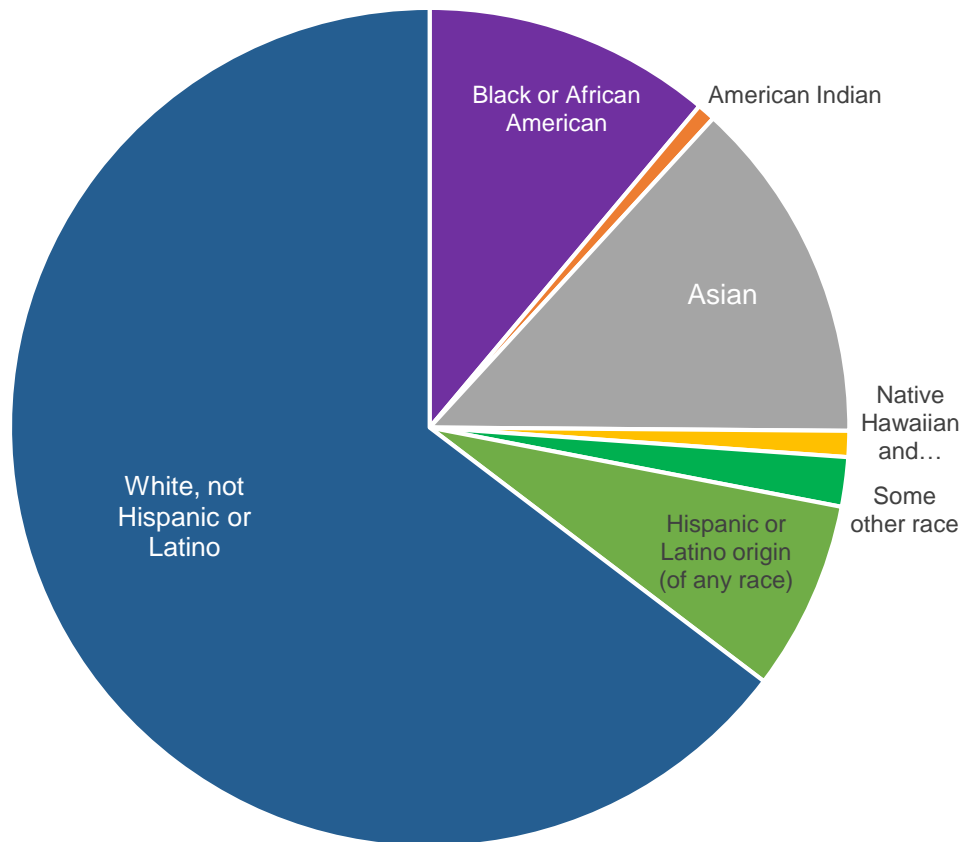


About Ramsey County and our Vision, Mission and Goals

RAMSEY COUNTY

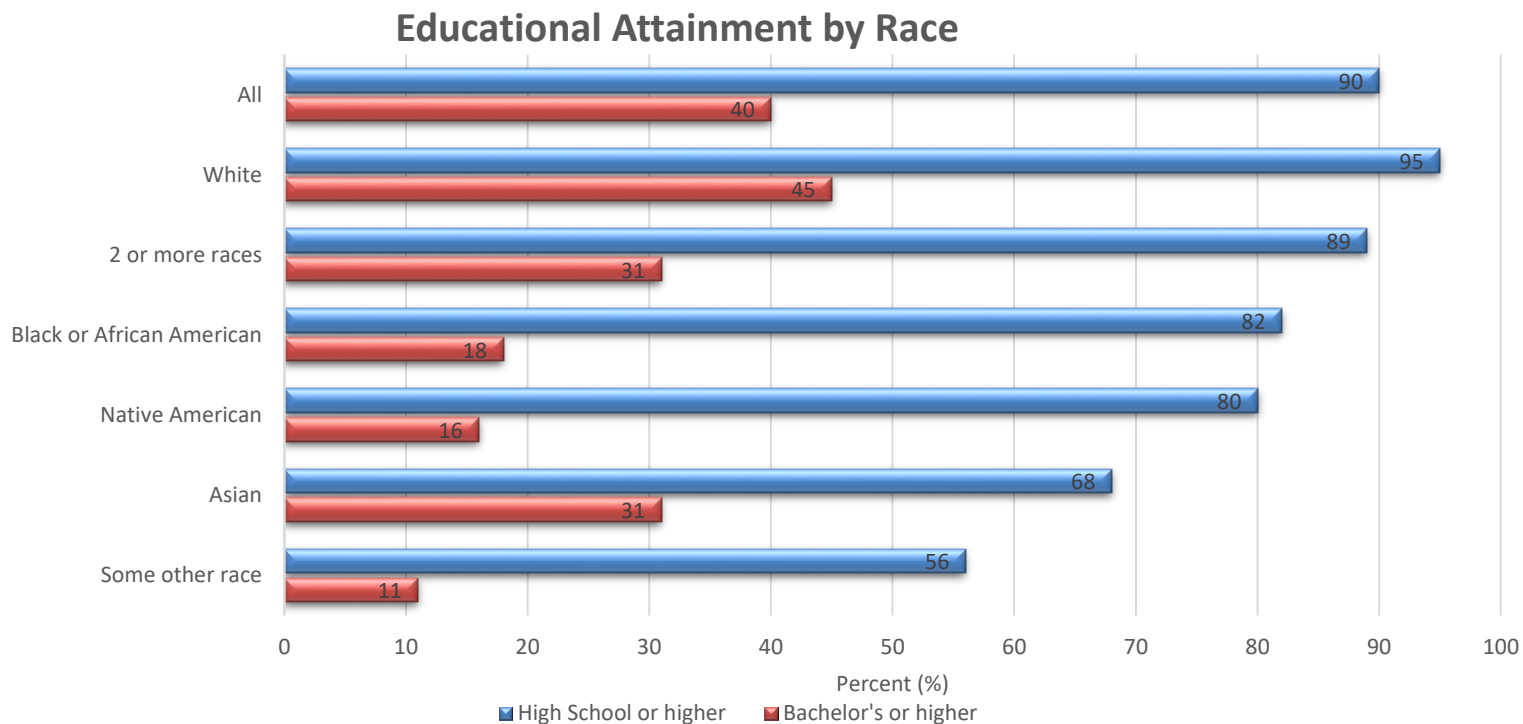
- Saint Paul is the county seat and capital of Minnesota.
- Population - 540,649; 56% of county residents reside in Saint Paul.
- Fully-developed, densely populated, urban center - second largest county in Minnesota by population, while also the smallest county by land area.
- One of the most diverse counties in Minnesota. The largest minority populations are Asian (13%) and African American (11%). 7% of residents have a Hispanic or Latino ethnic background.
- 22% of residents ages five years and older live in homes where a language other than English is spoken.



Education

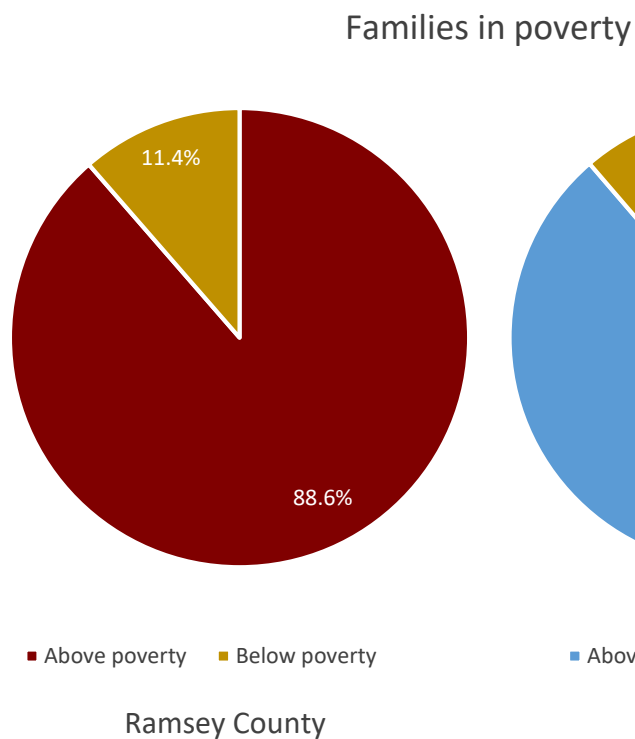
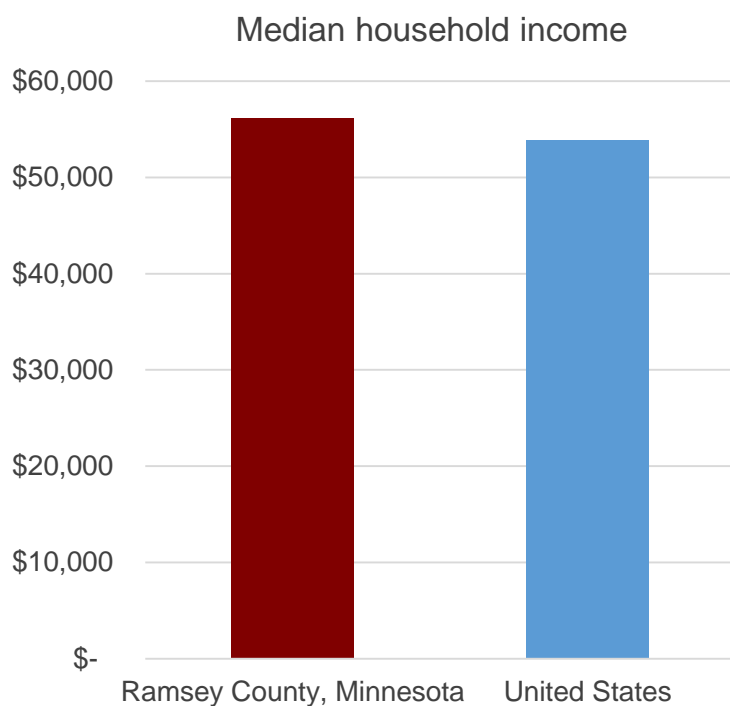
Overall, Ramsey County has a well-educated population. 90% have completed at least high school and 40% have at least a bachelor's degree.

However, significant racial and ethnic disparities exist in educational attainment.

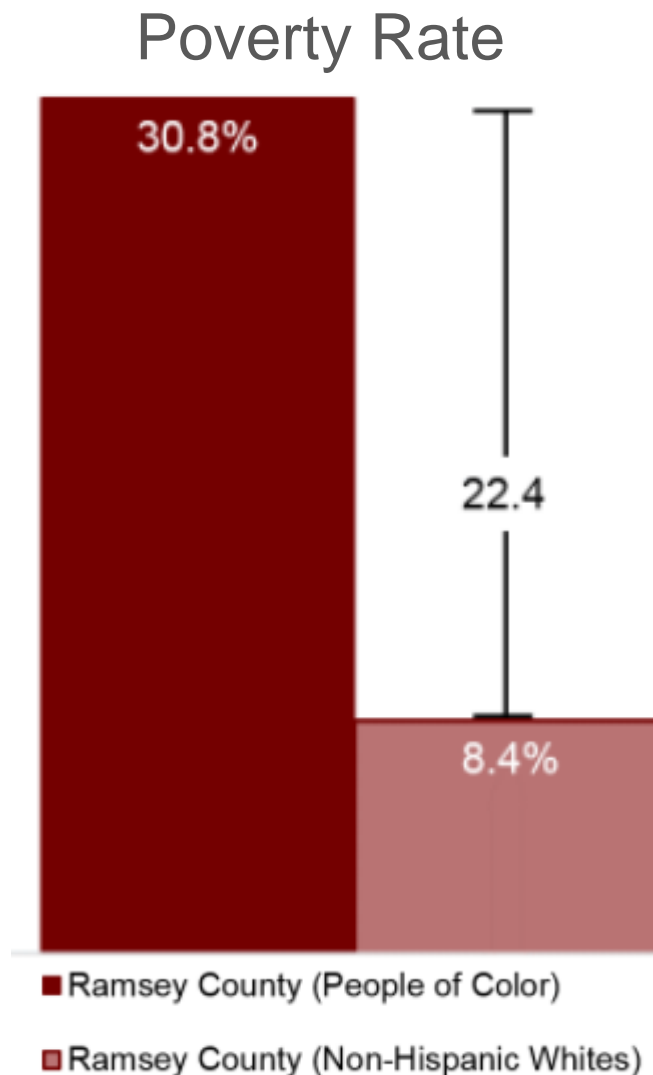
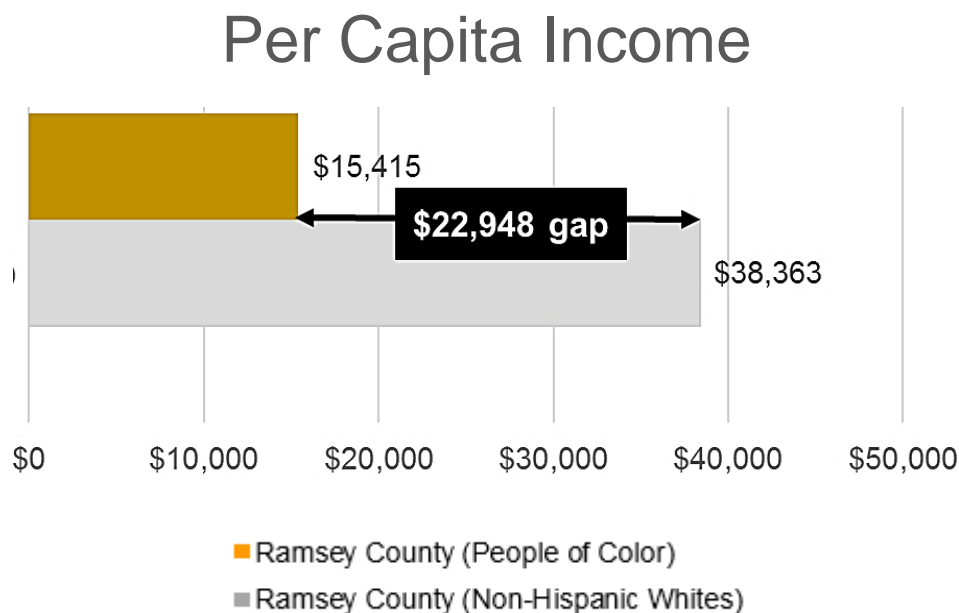


Income

Income in Ramsey County is above the U.S. median and poverty rates are close to the national average.



Racial Disparities in Income and Poverty Rates



Vision: A vibrant community where all are valued and thrive.

Mission: A county of excellence working with you to enhance our quality of life.

Goals



WELL-BEING

Strengthen individual, family and community health, safety and wellbeing
through effective safety-net services, innovative programming, prevention and early intervention, and environmental stewardship.



PROSPERITY

Cultivate economic prosperity and invest in neighborhoods with concentrated financial poverty
through proactive leadership and inclusive initiatives that engage all communities in decisions about our future.



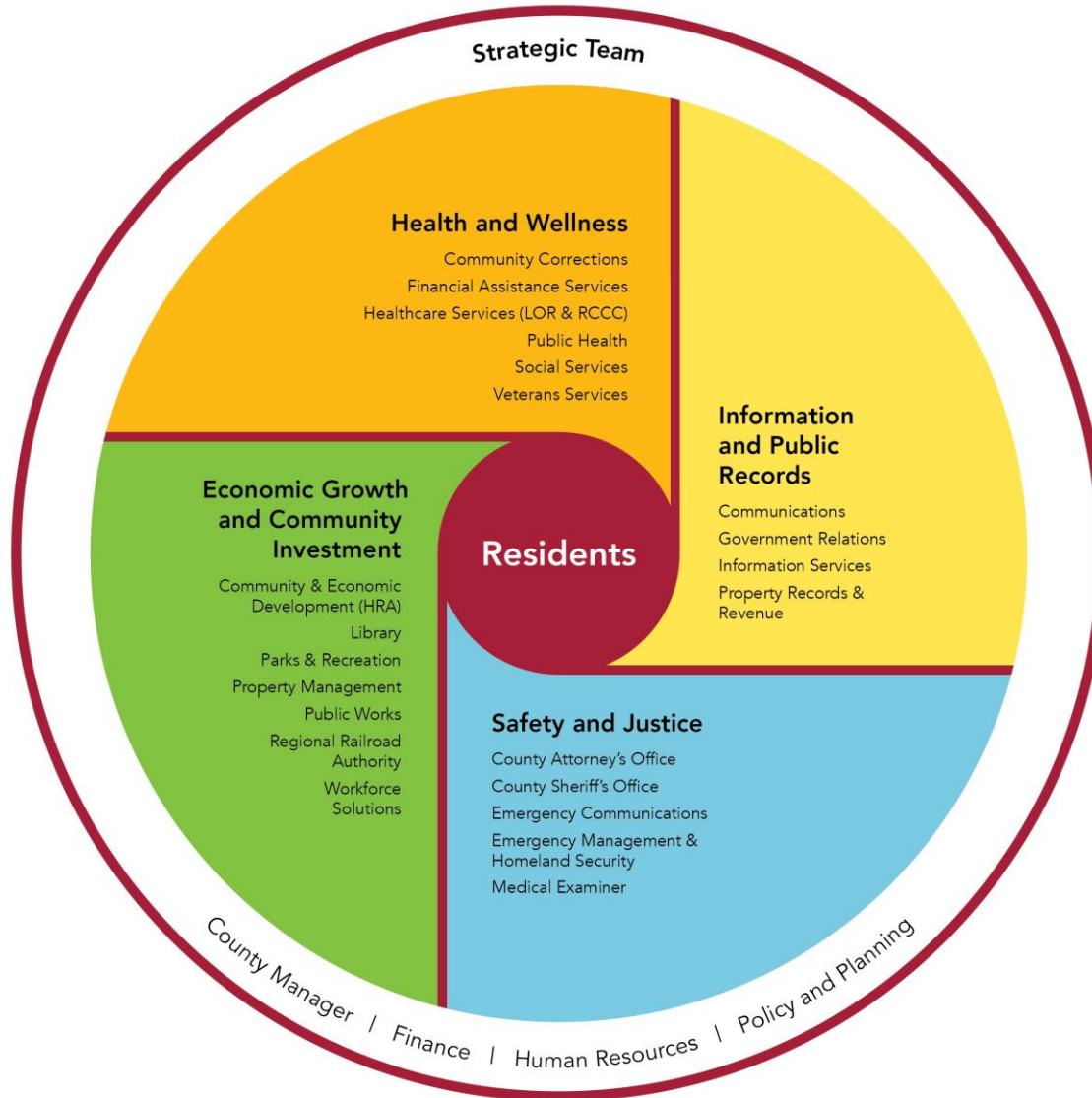
OPPORTUNITY

Enhance access to opportunity and mobility for all residents and businesses
through connections to education, employment and economic development throughout our region



ACCOUNTABILITY

Model fiscal accountability, transparency and strategic investments
through professional operations and financial management.



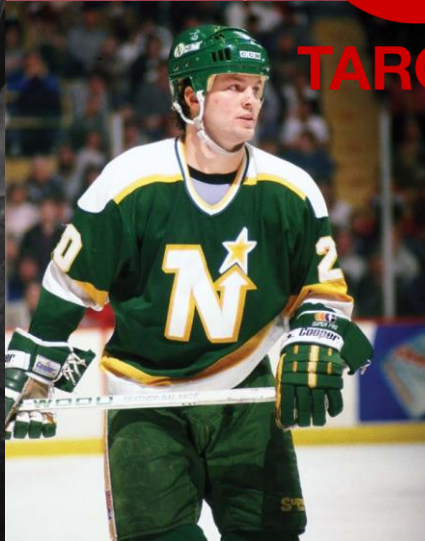
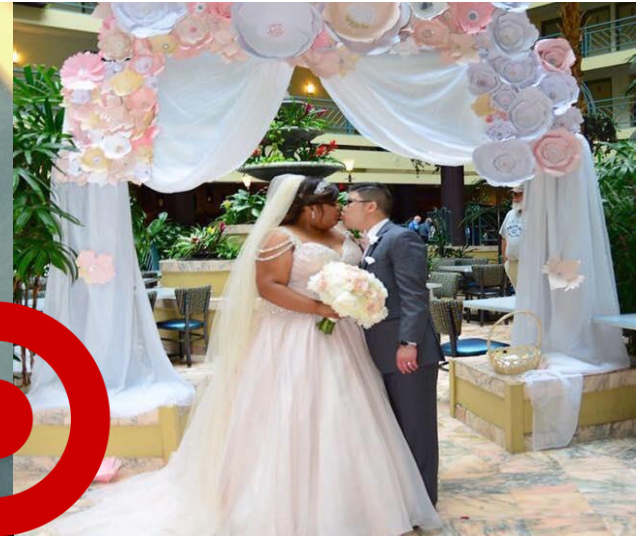
Greater Metropolitan Workforce Council Board

The Twin Cities Greater Metropolitan Workforce Council (GMWC) provides oversight and direction to publicly-funded workforce development services in the Twin Cities region.

The GMWC serves as a venue for leadership on workforce issues facing the metro region and includes the Chief Elected Officials of the 11 metro counties and the City of Minneapolis; the business leaders who serve as Chairs of each of the Local Workforce Investment Boards (WIB) and the directors of those boards.

| | | |
|--|--|---|
| Commissioner Sivarajah (Anoka County) | Commissioner Carter (Ramsey County) | Councilmember Tolbert (City of St. Paul) |
| Commissioner Callison (Hennepin County) | Commissioner Karwoski (Washington County) | Mayor Besty Hodges (City of Minneapolis) |
| Lee Ann Cox | Steve Cramer | Eric Neshiem |
| Lynn Noren | Tony Scallon | Corinne Shepard |
| Jonathan Weinhausen | Julie DeRanitz | Nona Ferguson |
| Peter Frosch | Butch Howard | Margaret Anderson-Kelliher |
| Eric Muschler | Paul Williams | Jenny Winkelaar |
| Khadija Zeig | Shirley Barnes | Laura Beeth |

Dino's Story



TARGET

