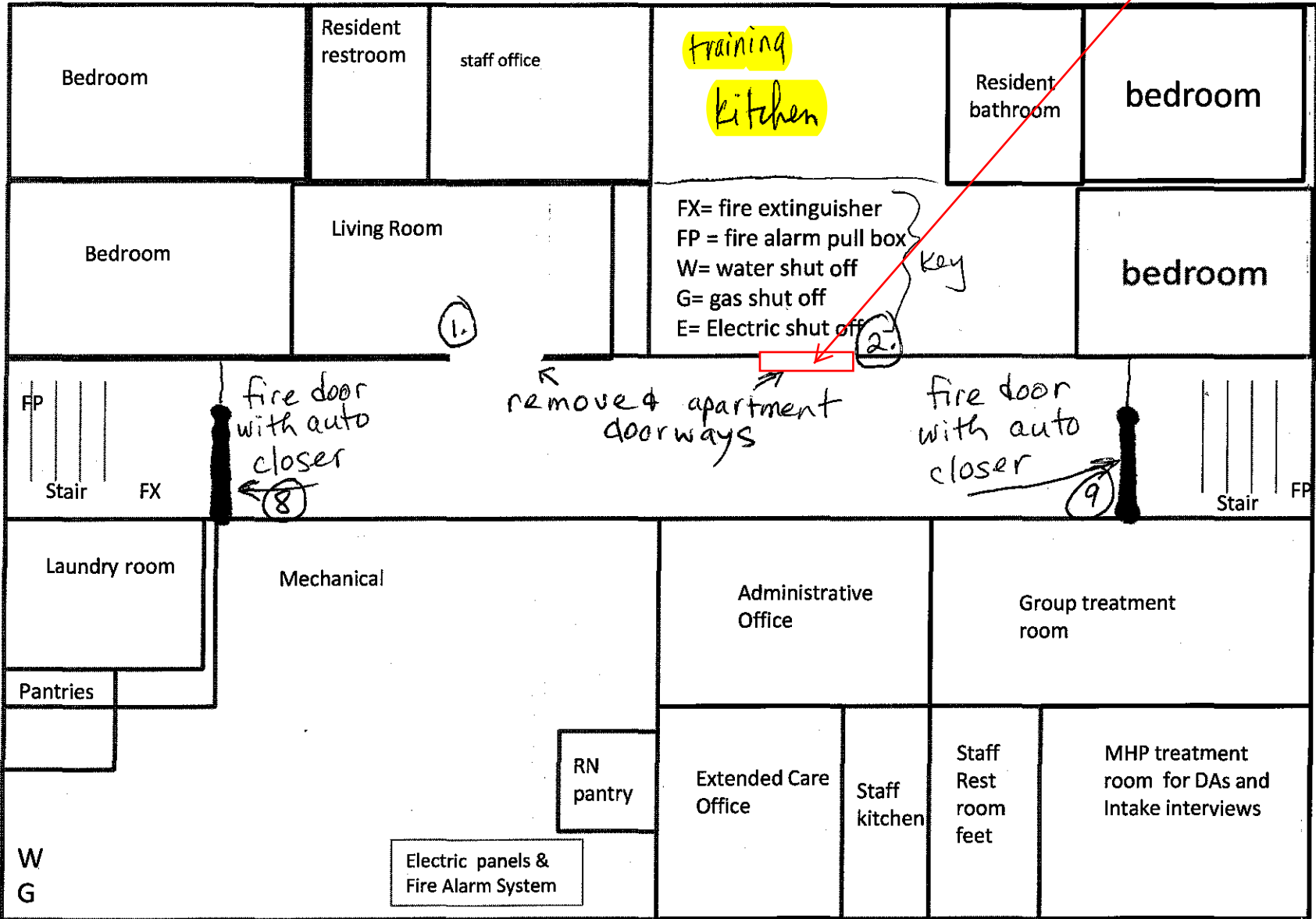


Community Options St Paul 1st floor

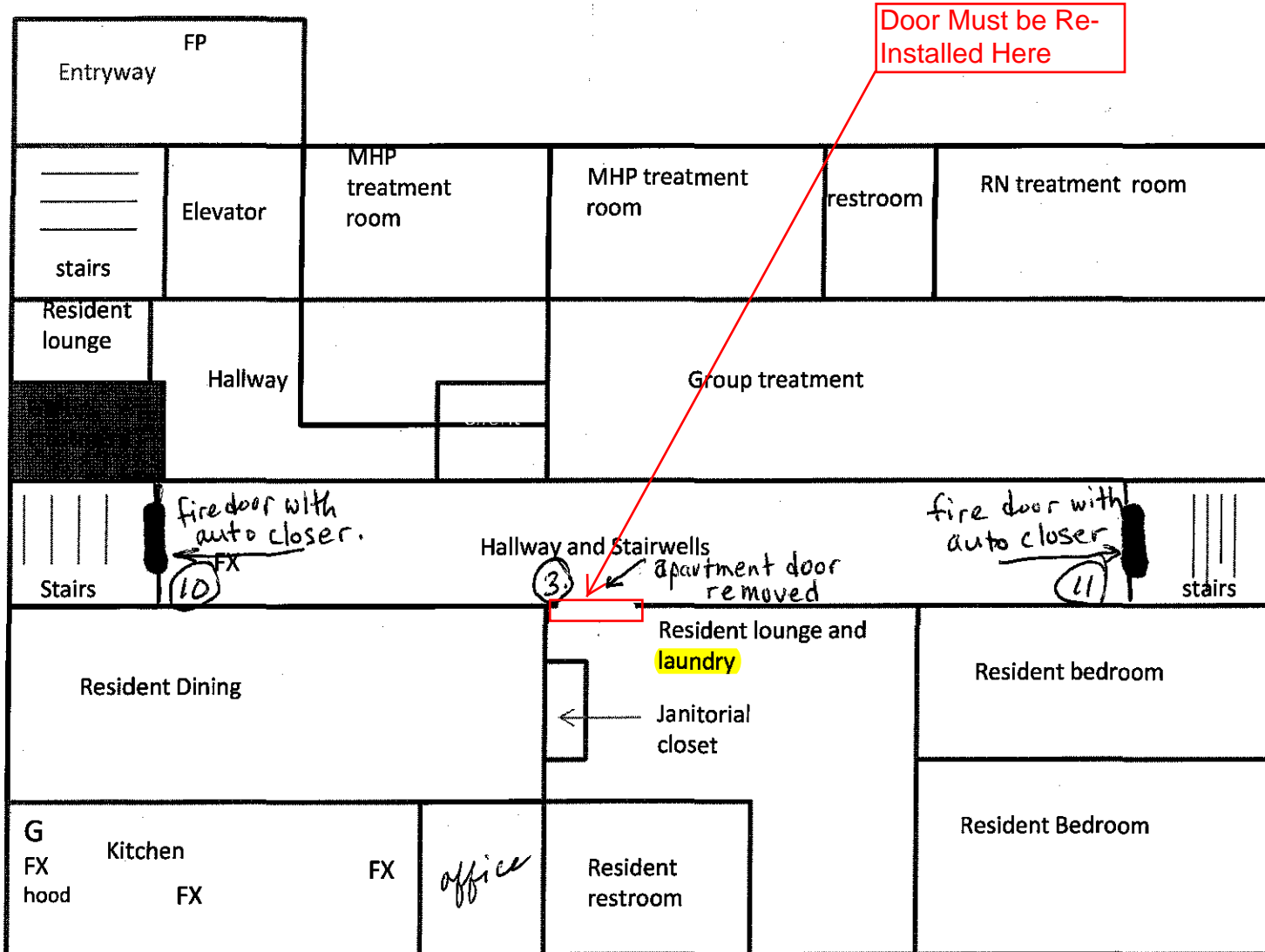
Door Must be Re-Installed Here

recommend installation of ≥ 20 minute door for these bedrooms because of proximity to kitchen



There are 7 doors marked 1-7 where the original "apartment" doors were removed. There are six fire doors with auto closure systems that function when the fire alarm is engaged. 8-13

Community Options St Paul 2nd floor



recommend installation of ≥ 20 minute door for these bedrooms because of proximity to laundry

- Key:
- FX= fire extinguisher
 - G= gas shut off system
 - FX hood= stove fire suppression system
 - FP= Fire alarm pull box

Key:
FX= fire
extinguisher

Community Options St Paul 3rd floor

