



St. Paul Heritage Preservation Commission



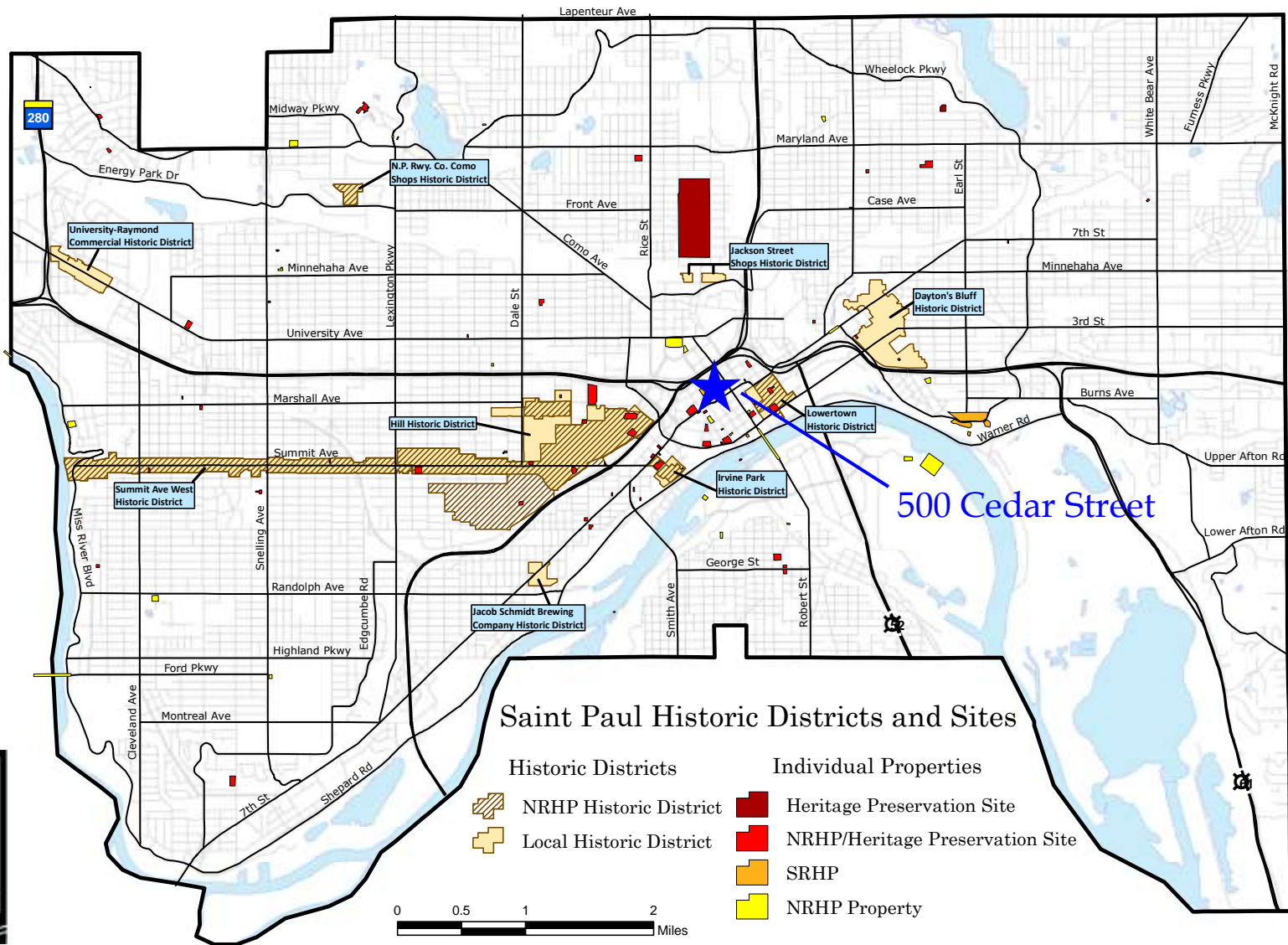
August 27, 2015

Public Hearing/Design Review

Central Presbyterian Church



500 Cedar Street
Individual Heritage Preservation Site



458



Top View

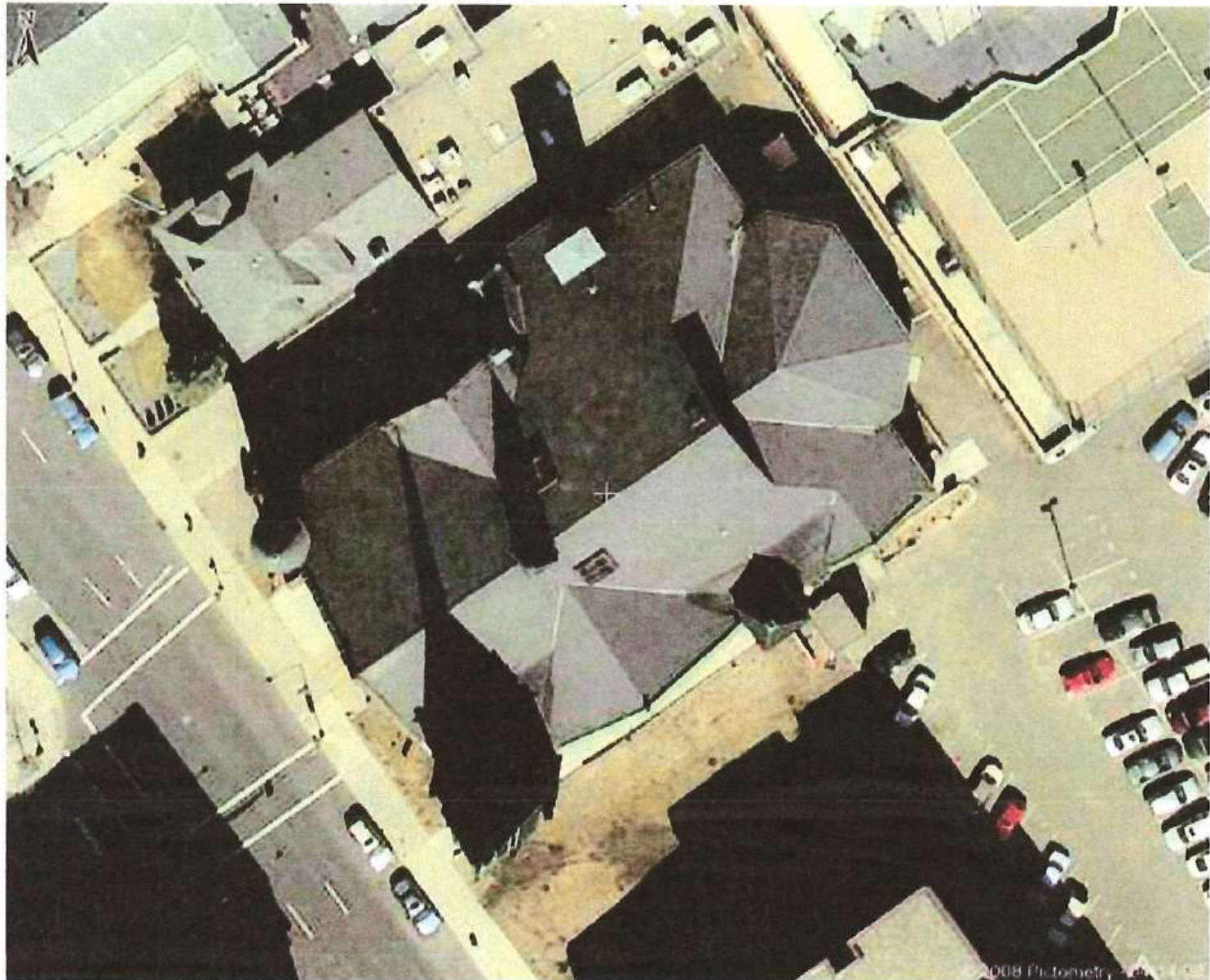


Figure 1 - Top View, Cedar Street is on the left 2/12/15

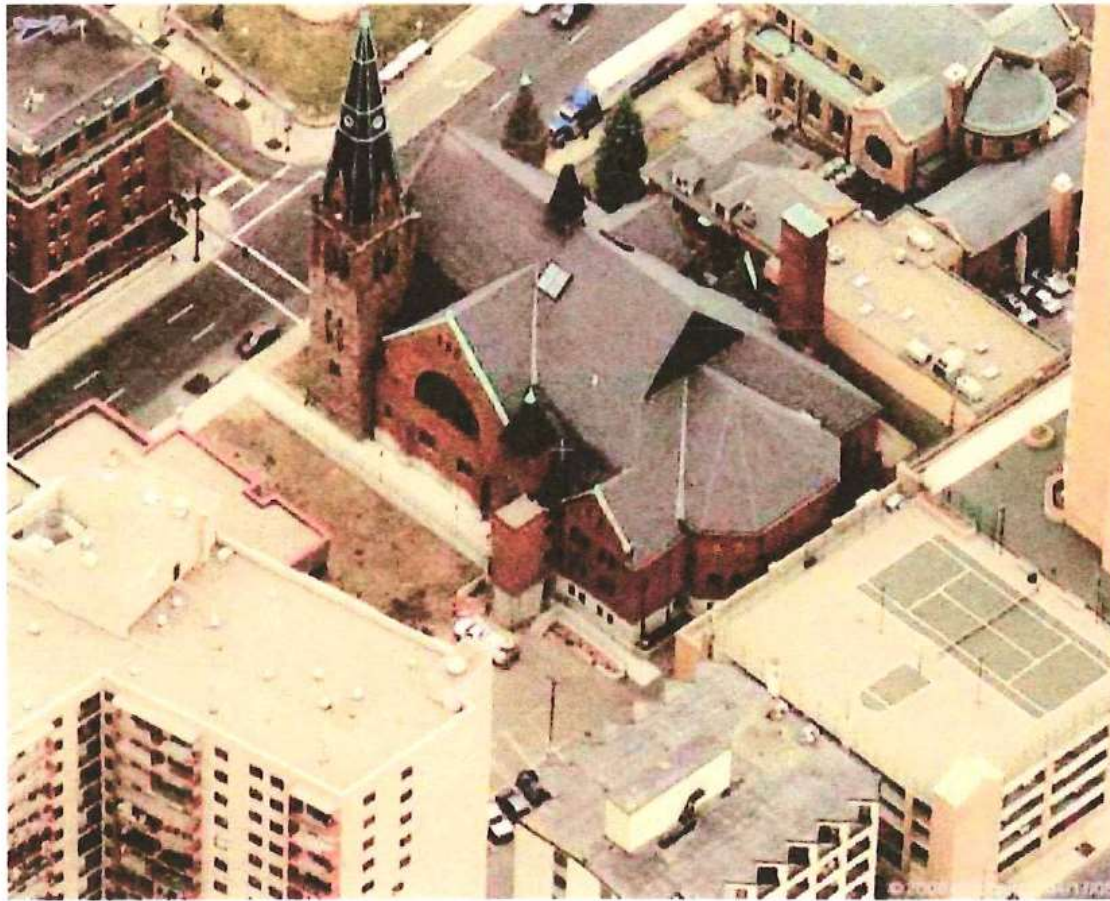


Figure 4 View of East side showing hipped roof of rear of church and apartment buildings parking garage immediately behind church 2/12/15



Figure 6 View from South side showing bell tower at left and hipped roof at right 7/27/15



Figure 7 Detail of current portion of south side eastern end of main roof showing missing shingles 7/27/15



Figure 8 Detail view of south side main roof by bell tower showing missing shingles 7/27/15



Figure 9 View taken from southwest side 7/27/15

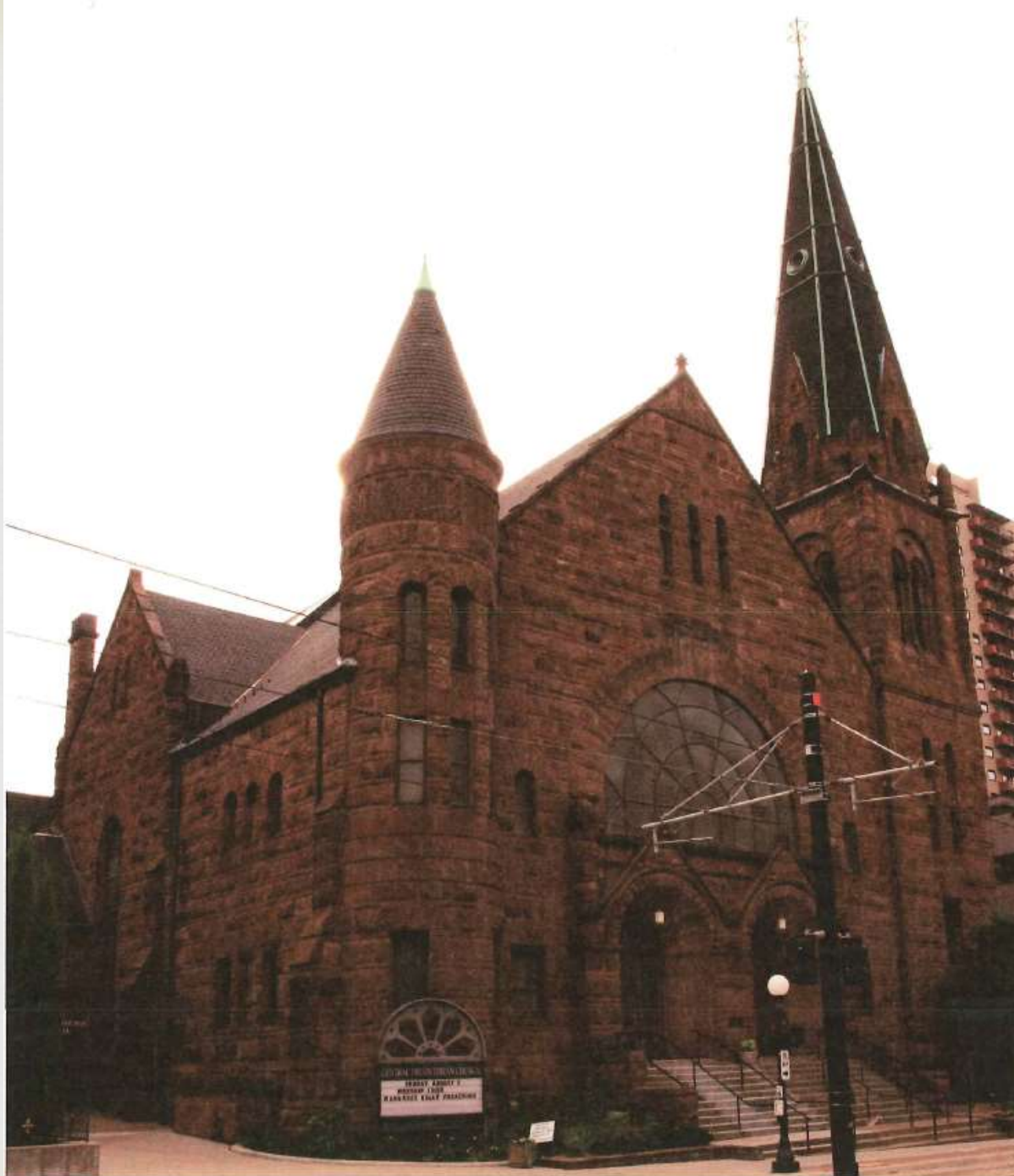


Figure 10 View taken from northwest side 7/27/15



Figure 11 Detail view of turret on northwest corner showing missing shingles 7/27/15



Figure 12 Detail view of gable of northeast corner showing missing shingles 7/27/15

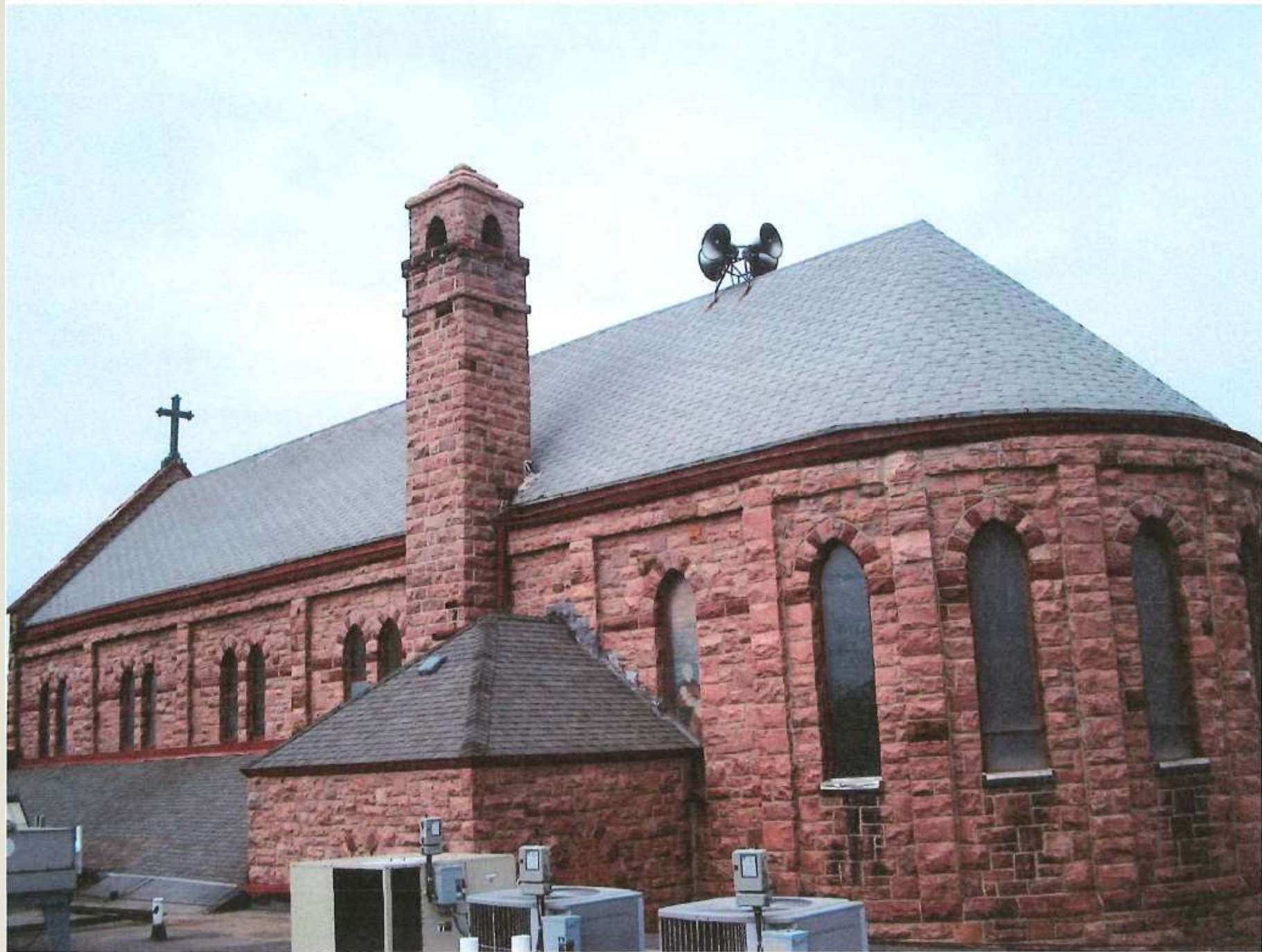
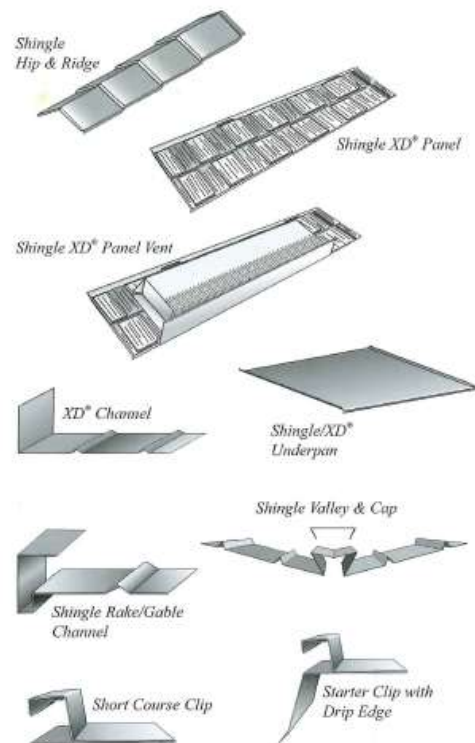


Figure 137 DECRA stone coated steel shingle XD in natural slate on a different church 6/20/15

Architectural Shingle at a Fraction of the Weight



Shingle XD® Installation Components:



Look for our complete line of venting and debris guard accessories, designed exclusively for use with DECRA Roofing Systems.

Shingle XD® Specifications:

Minimum Pitch ▶	4:12
Panel Size ▶	14-1/8" x 52-3/8"
Installed Exposure ▶	12-1/4" x 49-1/2"
Panels per Square ▶	23.8
Installed Weight ▶	150 lbs./sq.

Shingle XD® Color Blends



Jaeger Associates, Inc
1906- 310th Street
Titonka, Iowa 50480
www.jaegerassociatesinc.com
515-320-1635

50-Year Limited Warranty; 120 mph Wind Warranty; Highest Impact Resistance to Hail; Freeze/Thaw Resistant; Fire Safe; UL File #R14710; Florida Building Code, Miami-Dade County NCA, CCMC and ICC-ES reports available at www.decra.com.



DECRA®

Stone Coated Steel Roofing Systems

877.GO.DECRA [463.3272] | www.decra.com

© DECRA Roofing Systems, Inc. The USGBC logo is a registered trademark owned by the USGBC and is used in accordance with USGBC Guidelines.

9888358 - 01/15

DECRA® Shingle XD®



Metal Roofing Isn't What It Used To Be®

Shingle XD® Features:

- Unique Hidden Fastener System
- "Cut & Tuck"™ Technology
No Special Tools Required
- Direct to Deck Application
- Transferable 50-Year Limited Warranty
(including 120 mph winds and hail penetration)
- Class 4 Impact Resistance to UL 2218
by Underwriters Laboratories (Highest Rating)
- Lightweight – Only 150 lbs. per sq. installed
(sq. = 100 sq. ft.)
- Non-Combustible Class A Rated Material
- Won't Crack, Break, Burn, Curl, Split or Rot
- Walkable, Low Maintenance, Long Life
- Non-Porous, Freeze / Thaw Resistant
- Interlocking Panels Provide Protection
Against the Elements

Jaeger Associates, Inc
1906 310th Street
Titonka, Iowa 50480
www.jaegerassociatesinc.com
515-320-1635



Figure 1 St. John Cantius Church Wilno, MN



Figure 2 Detail of St. John Cantius Church



Figure 3 Our Lady of the Prairie Belle Plaine, MN



Figure 4 Detail of Our Lady of the Prairie

ROOFING MATERIAL COMPARISON TABLE

Product	Thickness	Widths	Exposure	Shape
GAF Timberline*	1/8 to 3/8"	4 1/2 to 5 5/8"	5 5/8"	Trapezoidal
CertainTeed Independence*	1/8 to 1/4"	3 to 8 1/8"	5"	Rectangular
GAF Slateline*	1/8"	7 5/8"	7 1/2"	Trapezoidal
Wood Shingles‡	1/4 to 3/8"	3 to 6"	5"	Rectangular
Slate	3/16"	10 to 14"	8"-14"	Rectangular
DECRA Shingle XD†	0.0138" (profile**: 3/8"-1/2")	5 to 7 1/2"	6 1/8"	Rectangular

* tar and gravel surface

** profile of bend in metal panel

† stone-coated steel. Measurements based on profile and division of pattern stamped into panels.

‡ examples are sawn and rough-sawn (not split).

