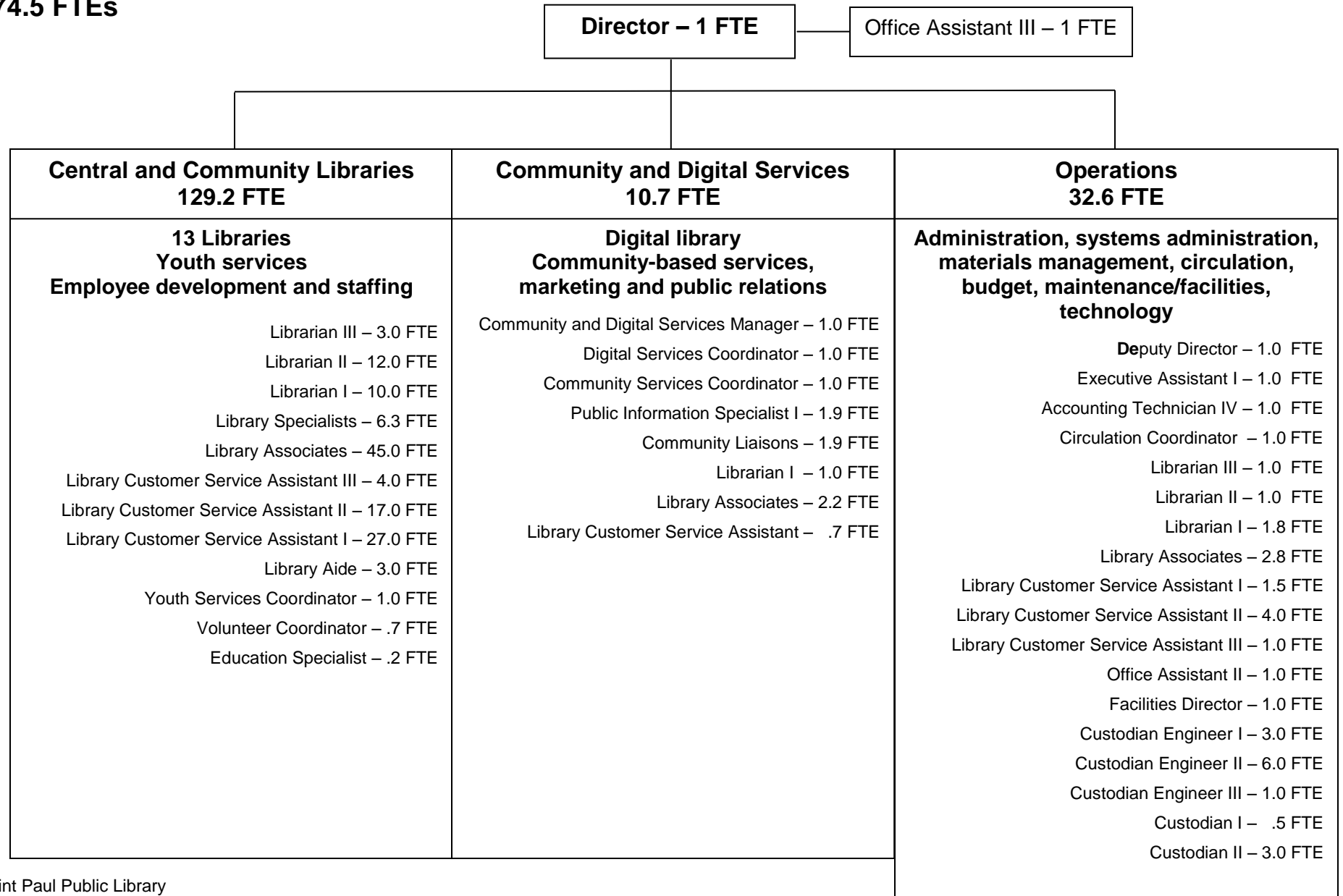


## Fund Balance/Cash Balance

LBP	Name/Description	Purpose/classification	2014 Fund Balance	2014 Cash Balance
<b>Fund 270</b>	<b>Public Library Agency</b> library general fund	used for cash flow per fund balance policy	2,257,367	2,200,136
<b>Fund 275</b>	<b>Library Agency Grants</b>			1,856,161
27543610	library revenue fees, fines	assigned to library	560,376	
27543650- 27543830	grants-MELSA, Friends, etc.	assigned/committed	887,837	
27543620	Rella Havens	assigned to library	402,055	

As of August, 2015 actual spending and financing amounts for 2014 listed above remain unaudited due to a delay in the 2014 financial audit.  
Because of this delay, these numbers may significantly deviate from final audited numbers.

**174.5 FTEs**





Saint Paul Public Library Staffing Changes  
2000-2016 General Fund

	2000	2009	2014	2015	2016
<b>Clerical Staff</b>					
Secretary	1.0				
Payroll Clerk	1.0	1.0			
Clerk IV/Executive Asst	1.0	1.0	1.0	2.0	1.0
Library Clerk III/Office Asst III	2.0	4.0	4.0	4.0	6.0
Accounting Clerk	1.0				
Library Clerk II/Office Asst II	32.3	27.1	22.6	22.0	22.0
Library Clerk I	29.0	31.0	30.6	30.7	29.2
Library Aide		9.4	0.0	1.5	3.0
<b>Total FTE/Percent</b>	<b>67.3</b>	<b>73.5</b>	<b>58.2</b>	<b>60.2</b>	<b>61.2</b>
<b>Operating Eng Staff</b>					
Custodian Eng. III	1.0	1.0	1.0	1.0	1.0
Custodian Eng II	5.0	6.0	6.0	6.0	6.0
Driver Operator	1.1				
Custodian Eng I	7.5	3.0	3.0	3.0	3.0
Custodian II		2.0	3.0	3.0	3.0
Custodian		1.0			
Custodian I		2.5	0.5	0.5	0.5
<b>Total FTE/Percent</b>	<b>14.6</b>	<b>15.5</b>	<b>13.5</b>	<b>13.5</b>	<b>13.5</b>
Special Employment	0.0		0.2	0.2	
<b>Total FTE/Percent</b>	<b>0.0</b>		<b>0.2</b>	<b>0.2</b>	<b>0.0</b>
<b>Technical Staff</b>					
Cultural Liason			1.0	1.0	1.0
Library Associate	26.2	45.2	47.2	51.1	49.1
Accounting Tech	1.0	1.0	1.0	1.0	1.0
<b>Total FTE/Percent</b>	<b>27.2</b>	<b>46.2</b>	<b>49.2</b>	<b>53.1</b>	<b>51.1</b>
<b>Professional Staff</b>					
Library Info Resources Coord	1.0				
Digital Services Coordinator			1.0	1.0	1.0
Librarian II	18.0	16.0	13.0	13.0	13.0
Librarian I	9.0	13.0	11.0	11.6	12.8
Youth Service Coordinator			1.0	1.0	1.0
Library Community Serv. Coord			1.0	1.0	1.0
Public Info Spec I	1.0	0.9	1.9	1.9	1.9
Volunteer Coord	0.5	0.5	0.7	0.7	0.7
Library Specialist	17.7	8.8	6.3	6.3	6.3
<b>Total FTE/Percent</b>	<b>47.2</b>	<b>39.2</b>	<b>35.9</b>	<b>36.5</b>	<b>37.7</b>
<b>Supervisory Staff</b>					
Director	1.0	1.0	1.0	1.0	1.0
Technical MGR/Deputy Dir	1.0	1.0	1.0	1.0	1.0
Library Public Serv. MGR	1.0				
Facilities Manager	1.0	1.0	1.0	1.0	1.0
Librarian IV	3.0				
Librarian III	5.0	6.0	4.0	4.0	4.0
Public Relations Mgr/CDS Mgr		1.0	1.0	1.0	1.0
Office Manager	2.0				
Circulation Coordinator		1.0	1.0	1.0	1.0
<b>Total FTE/Percent</b>	<b>14.0</b>	<b>11.0</b>	<b>9.0</b>	<b>9.0</b>	<b>9.0</b>
	<b>170.3</b>	<b>185.4</b>	<b>166.0</b>	<b>172.5</b>	<b>172.5</b>

2001-first homework ctr  
2002-Rice expanded  
2005-Dayton's Bluff added  
2006-Rondo expanded

2009-5 homework ctrs  
2010-West 7th expanded  
2014-Arlington Hills opened; Highland Park and Sun Ray expanded  
2015-hours increase

## Open Hours 2016

The Saint Paul Public Library will be open 711 hours a week in 2016.

	Monday	Tuesday	Wednesday	Thursday	Friday	Saturday	Sunday	Total
<b>George Latimer Central</b>	12--8	9--5:30	9--5:30	9--5:30	9--5:30	11--5:00	1--5	<b>52</b>
<b>Arlington, Highland, Rondo, Sun Ray</b>	10--8	10--8	10--8	10--8	10--5:30	10--5:30	1--5	<b>59</b>
<b>Dayton's Bluff, Merriam, Rice Street</b>	12--8	10--8	12--8	10--8	10--5:30	11:30--5:00	1--5	<b>53</b>
<b>Hamline, Hayden Heights, Riverview, Saint Anthony</b>	12--8	10--8	12--8	10--8	10--5:30	11:30--5:00	Closed	<b>49</b>
<b>West 7th</b>	12:30--8	11:30-5:30	10--5:30	12:30--8	10--5:30	Closed	Closed	<b>36</b>
<b>Bookmobile</b>	varies	varies	varies	varies	varies	varies	varies	<b>32</b>

## Library Materials

	Adopted 2011	Adopted 2012	Adopted 2013	Adopted 2014	Adopted 2015	Proposed 2016
General Fund	\$974,195	\$679,195	\$721,995	\$775,000	\$775,000	\$775,000
Library Spec Rev (fees/fines)	\$217,100	\$262,100	\$260,000	\$260,000	\$260,000	\$260,000
Friends	\$140,000	\$140,554	\$140,554	\$140,196	\$140,196	\$140,196
MELSA	\$130,053	\$130,053	\$130,053	\$130,053	\$130,053	\$130,053
One-time funds/various sources	\$155,000	\$200,000	\$257,200	\$750,000	\$300,000	
<b>Total Budget</b>	<b>\$1,616,348</b>	<b>\$1,411,902</b>	<b>\$1,509,802</b>	<b>\$2,055,249</b>	<b>\$1,605,249</b>	<b>\$1,305,249</b>

