



INTERNALIZED COMMUNITY STORAGE

BY PREMIER STORAGE

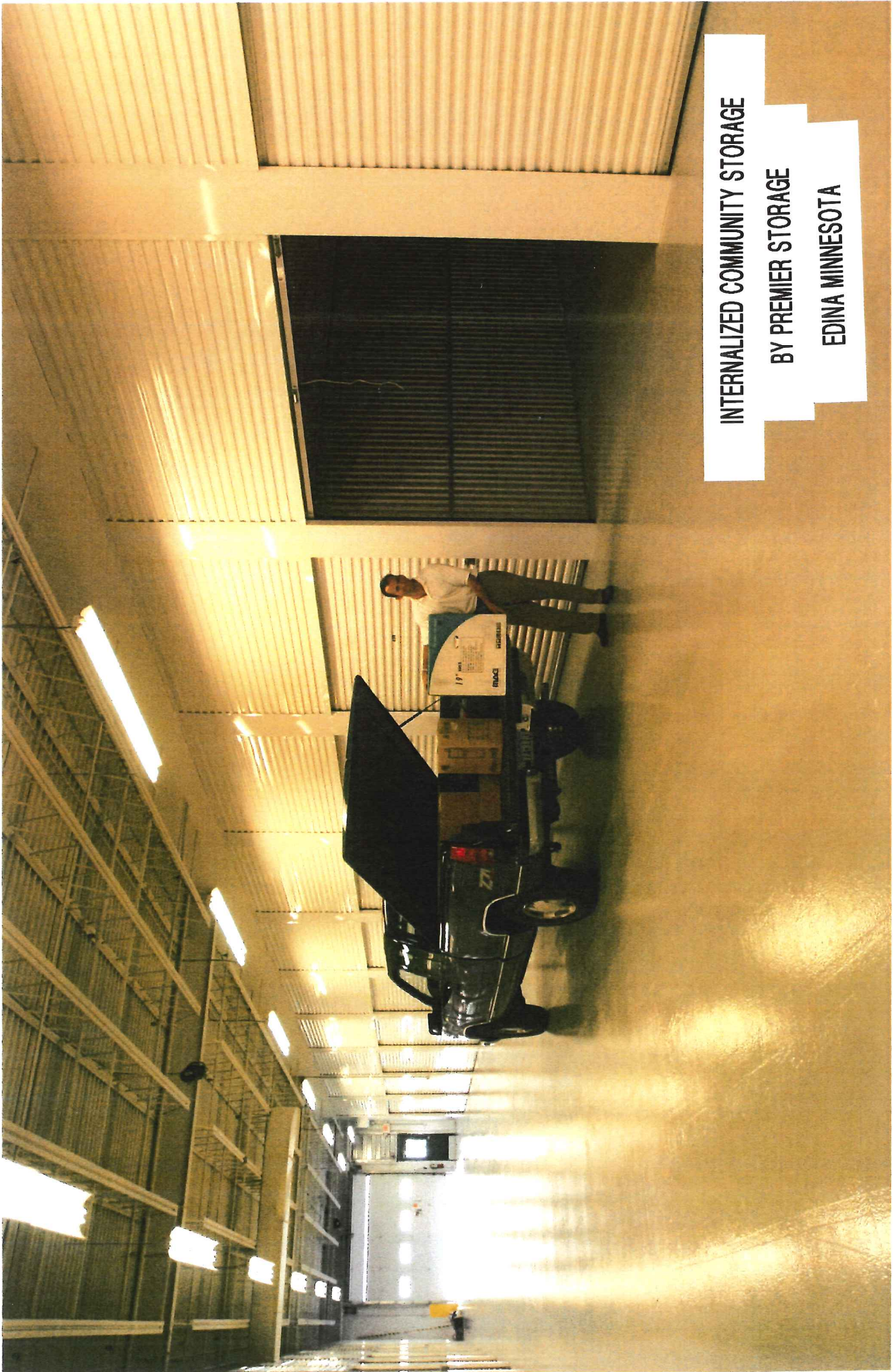
NEW HOPE MINNESOTA



INTERNALIZED COMMUNITY STORAGE

EDINA MINNESOTA

BY PREMIER STORAGE



INTERNALIZED COMMUNITY STORAGE

BY PREMIER STORAGE

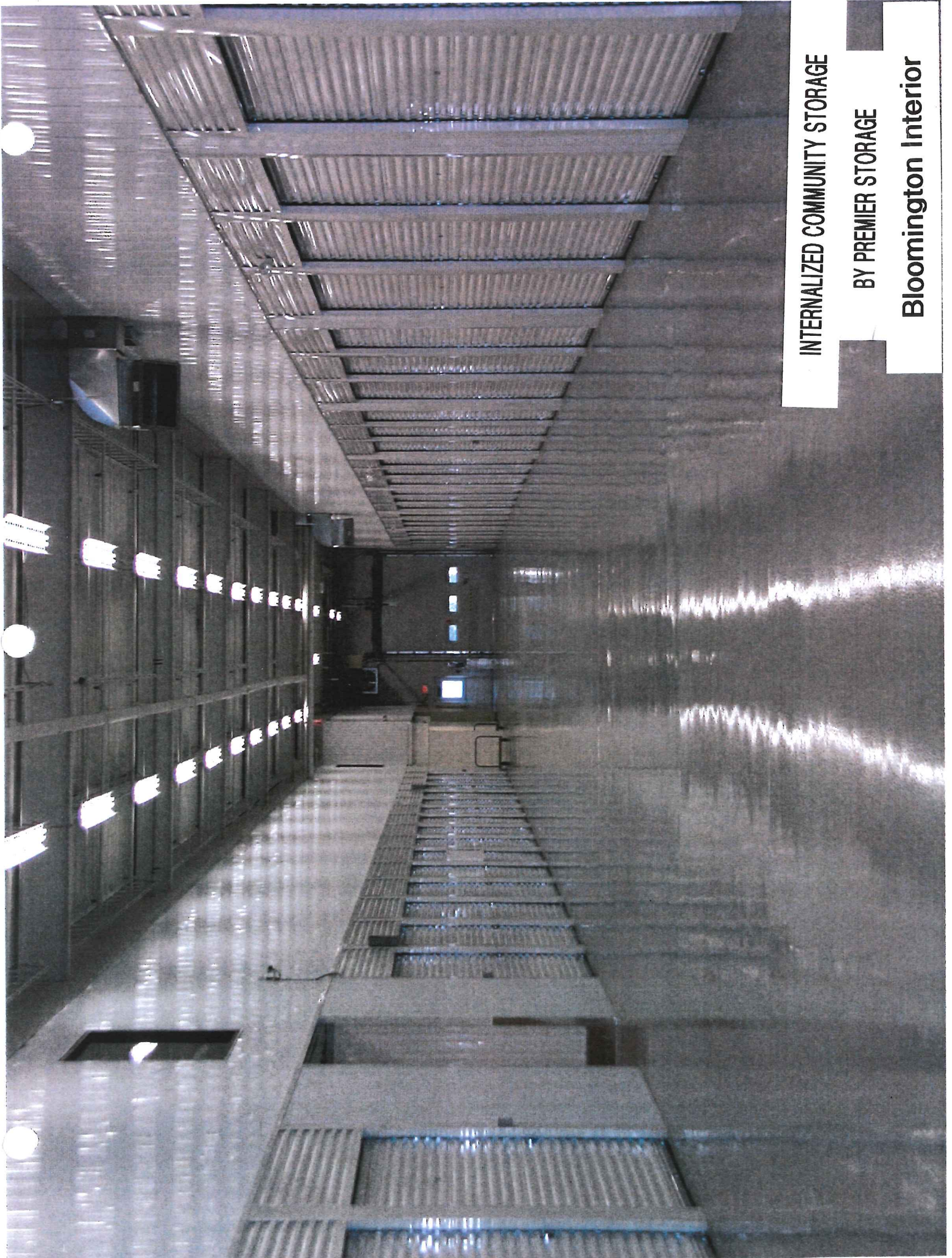
EDINA MINNESOTA



INTERNALIZED COMMUNITY STORAGE

BLOOMINGTON MINNESOTA

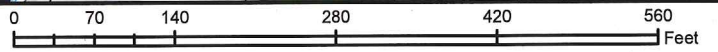
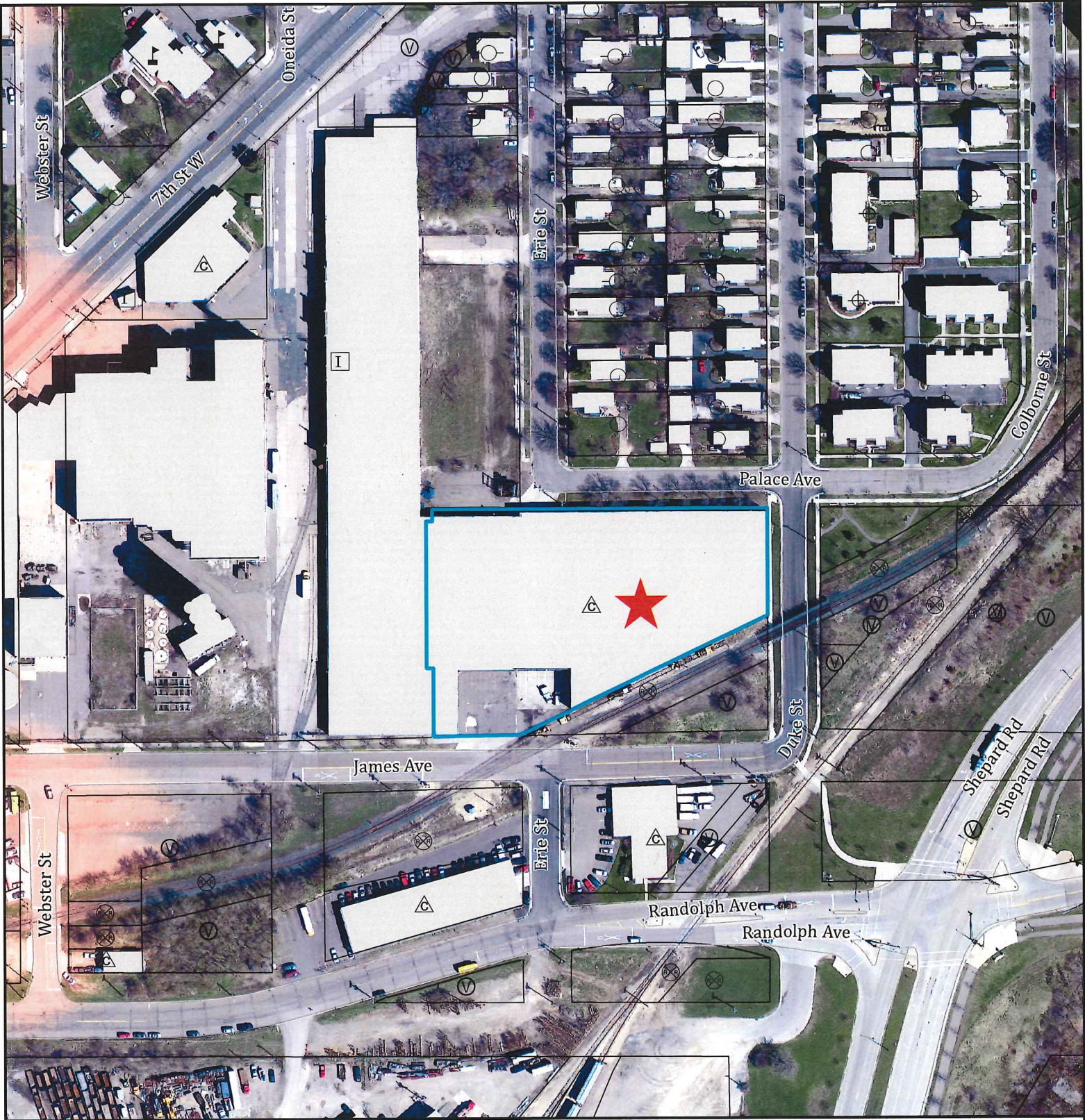
BY PREMIER STORAGE



INTERNALIZED COMMUNITY STORAGE

BY PREMIER STORAGE

Bloomington Interior



APPLICANT Premier Storage LLC

APPLICATION TYPE ReEst/Chg NCUP

FILE # 14-319416 DATE 8/14/2014

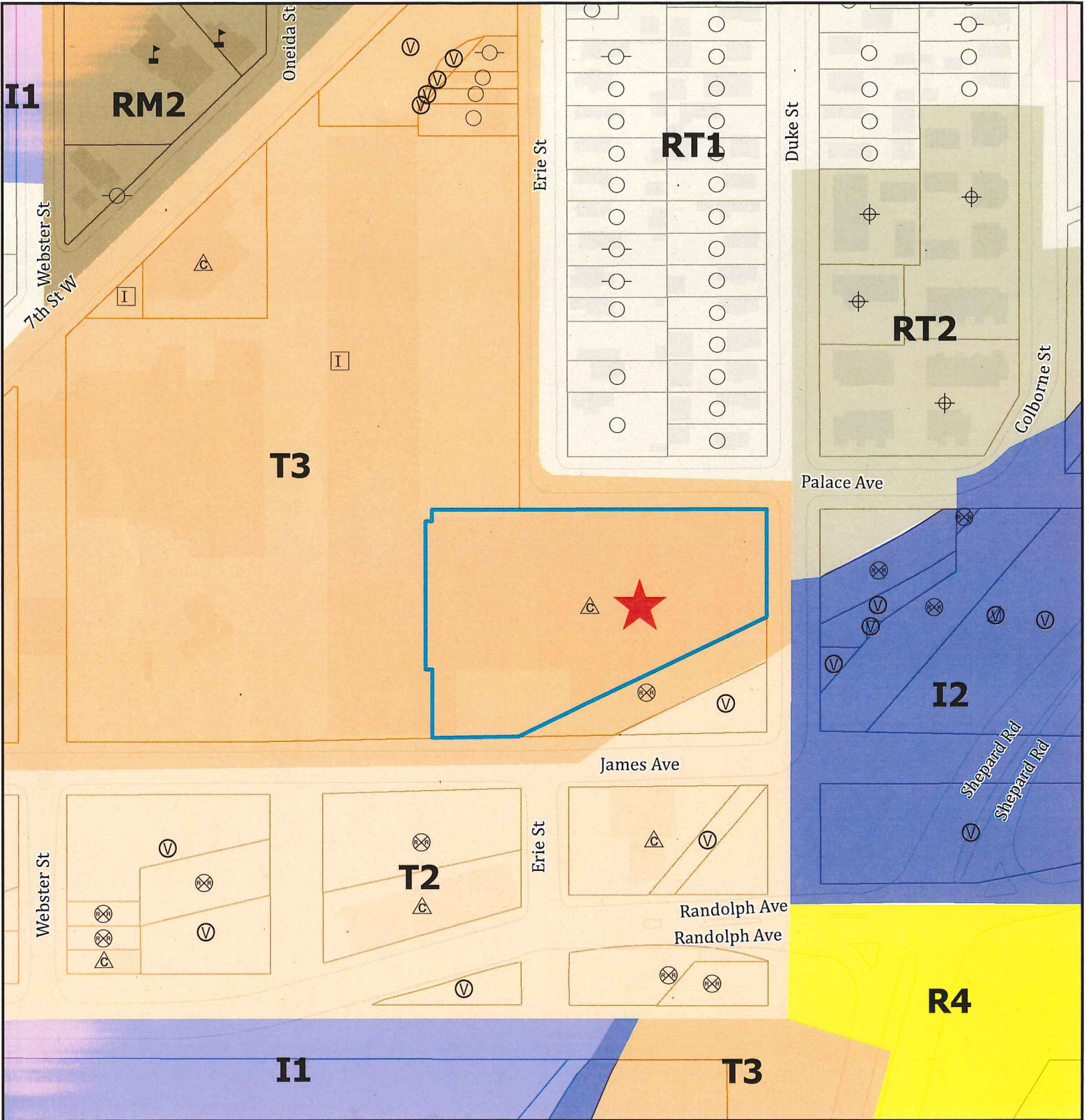
PLANING DISTRICT 9

ZONING MAP # 21

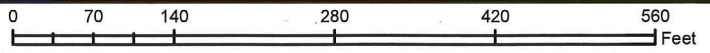
- | | |
|------------------------|----------------------------|
| △ Commercial & Office | ○ Residential One Family |
| □ Industrial & Utility | ○ Residential Two Family |
| ♫ Institutional | ○ Residential Three Family |
| ⊙ Vacant/Undeveloped | ⊕ Multifamily |



Saint Paul Department of Planning and Economic Development
Ramsey County



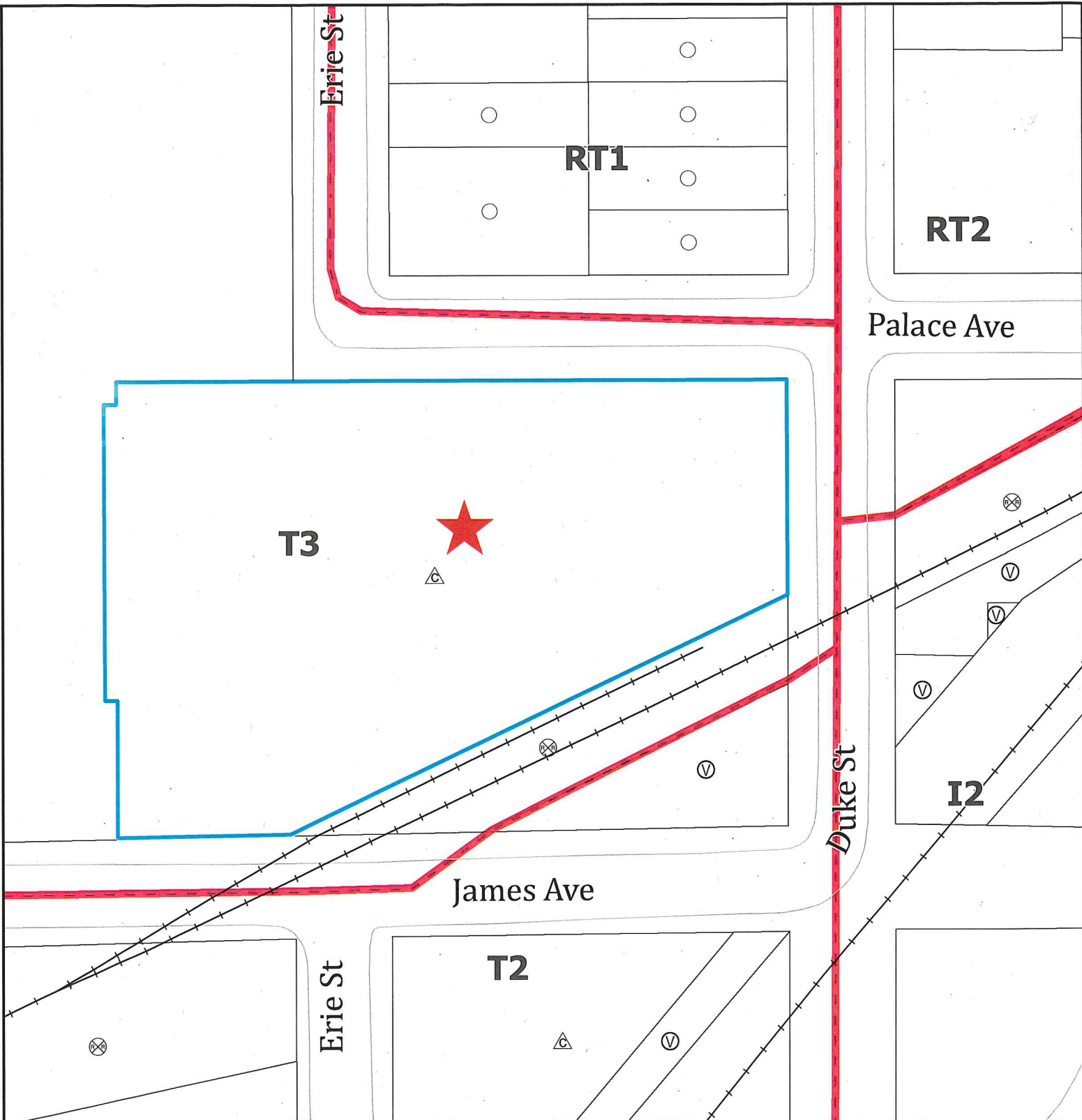
APPLICANT Premier Storage LLC
 APPLICATION TYPE ReEst/Chg NCUP
 FILE # 14-319416 DATE 8/14/2014
 PLANING DISTRICT 9
 ZONING MAP # 21



- | | | | |
|--|----------------------|--|--------------------------|
| | Commercial & Office | | Residential One Family |
| | Industrial & Utility | | Residential Two Family |
| | Institutional | | Residential Three Family |
| | Vacant/Undeveloped | | Multifamily |

Saint Paul Department of Planning and Economic Development
Ramsey County





APPLICANT Premier Storage LLC
 APPLICATION TYPE Reest./chg NCUP
 FILE # 14-319416 DATE 8/13/2014
 PLANING DISTRICT 9
 ZONING MAP # 21

- | | | | |
|--|----------------------|--|--------------------------|
| | Commercial & Office | | Residential One Family |
| | Industrial & Utility | | Residential Two Family |
| | Institutional | | Residential Three Family |
| | Vacant/Undeveloped | | Multifamily |

