

## City Council Budget Meeting 8/21/13

### Solid Waste and Recycling

Public Works Director Rich Lallier will give a brief overview of the community assessment process that has led to the proposed recycling program service changes. Rich will also summarize the vision for the recycling program over the next three years and highlight 2014 initiatives. The documents included in your packet are:

**Recycle it Forward Project Timeline:** Work began August 2012. The city secured a \$100,000 Public Entity Innovation grant that allowed us to hire Wilder Research Foundation to facilitate the majority of community assessment work. The timeline highlights the major activities related to research, community engagement and report preparation and recommendation development.

**Wilder Research Final Report-Executive Summary:** *Recycle it Forward: A comprehensive assessment of recycling and solid waste management systems in the City of Saint Paul.* This document summarizes key findings from Saint Paul residents regarding their perceptions, needs and preferences related to trash, recycling, organics and bulky items.

**Recycling Services Timeline:** This document outlines the main program initiatives recommended over a three year period highlighting activities in 2014.

**2013:** Reinvalidate recycling program through additional education and outreach.

**2014:**

- Allow residents to put all recyclables together in a single-sort collection system. Use existing blue bins.
- Add all plastic containers with #1, 2, 4, 5, & 7 to the list of acceptable materials. Currently only #1 & #2 plastic bottles are acceptable.
- Increase education and outreach about backyard composting and worm composting as well as expand organics drop off sites.
- Provide more opportunities to reuse and dispose of bulky items like furniture, appliances, and electronics.

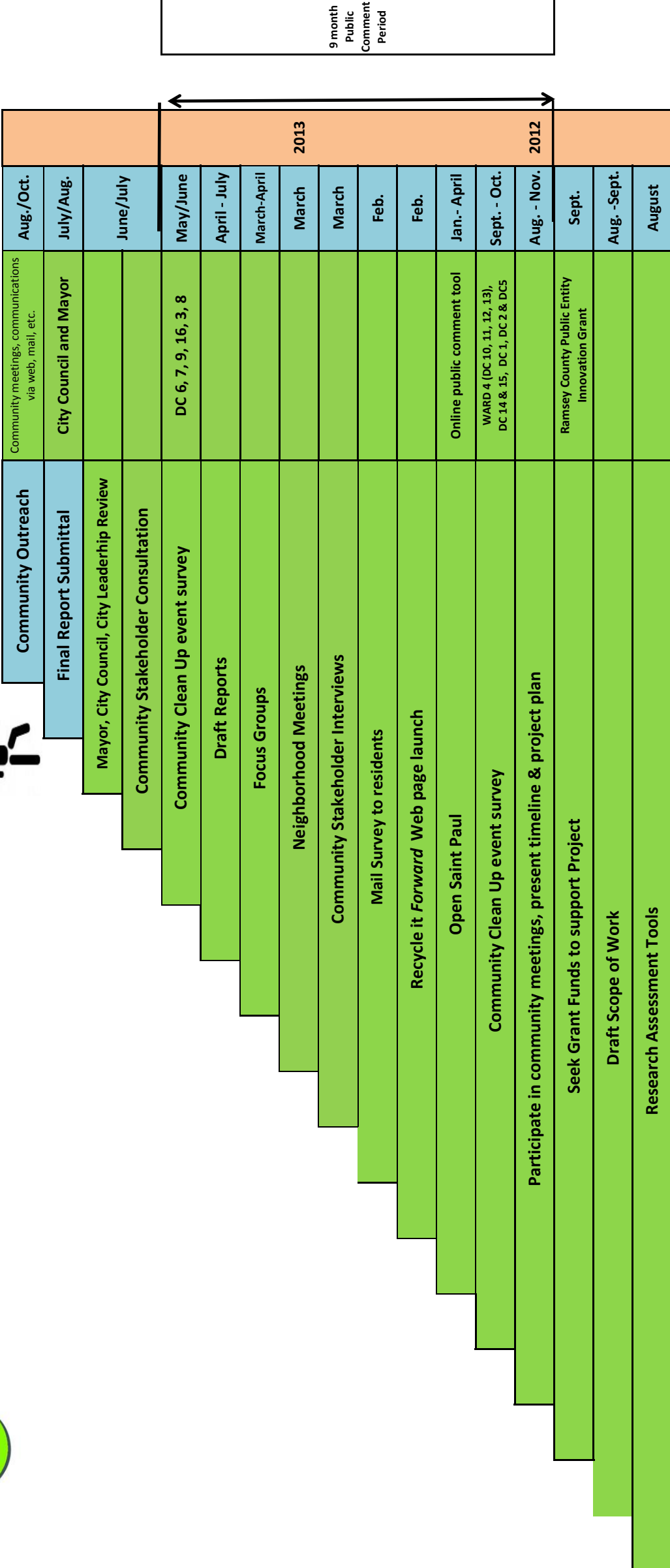
**2015:** Convert to a wheeled, covered cart for recycling collections with carts located where trash is collected. 80% will be in the alley.

**2016:** Transition to a wheeled, covered cart for organics collection.

**Solid Waste and Recycling Rate Impact:** This document outlines annual rate adjustments (contract, personnel, COMET, estimated sales tax exemption and revenue adjustments) as well as proposed service changes rate adjustments. Current services required rate adjustment equal a 4.7% increase. The proposed service changes equal a 35% increase in fees.

- 2014 Proposed Single family rate is \$52.26/year or \$4.36/month
- 2014 Proposed Multi-unit rate is \$32.50/year or \$2.71/month



	Community Outreach	Community meetings, communications via web, mail, etc.	Aug./Oct.
	Final Report Submittal	City Council and Mayor	July/Aug.
	Mayor, City Council, City Leadership Review		June/July
	Community Stakeholder Consultation		
	Community Clean Up event survey	DC 6, 7, 9, 16, 3, 8	May/June
	Draft Reports		April - July
	Focus Groups		March-April
	Neighborhood Meetings		March
	Community Stakeholder Interviews		March
	Mail Survey to residents		Feb.
	Recycle it <i>Forward</i> Web page launch		Feb.
	Open Saint Paul	Online public comment tool	Jan.- April
	Community Clean Up event survey	WARD 4 (DC 10, 11, 12, 13), DC 14 & 15, DC 1, DC 2 & DC5	Sept. - Oct.
	Participate in community meetings, present timeline & project plan		Aug. - Nov.
	Seek Grant Funds to support Project	Ramsey County Public Entity Innovation Grant	Sept.
	Draft Scope of Work		Aug. -Sept.
	Research Assessment Tools		August

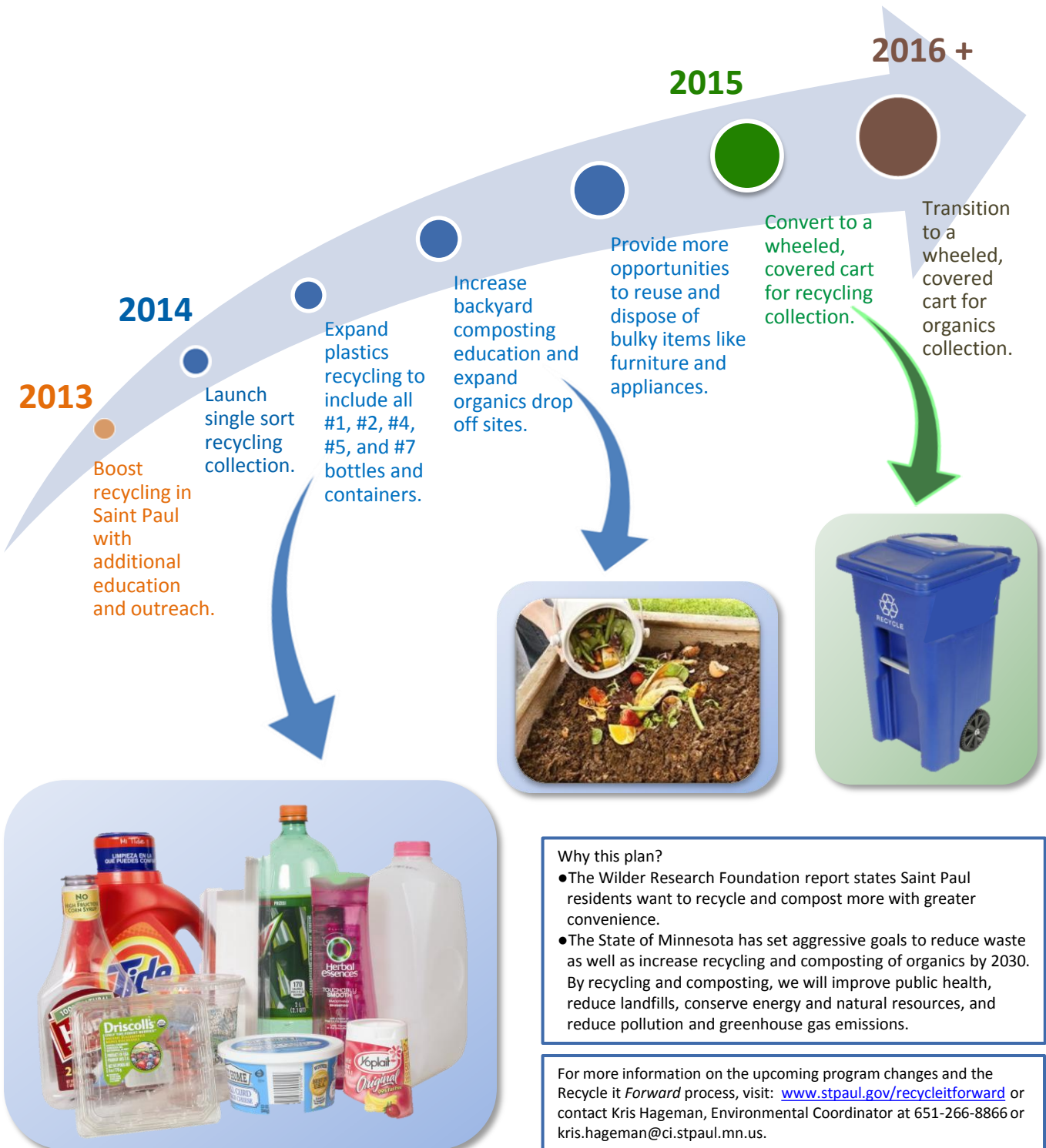
9 month  
Public  
Comment  
Period

9 month  
Public  
Comment  
Period



# Recycling Services Timeline

The City asked and you told us that you want expanded recycling services. You want to recycle more plastic material. You want the recycling program to be more convenient. You want to dispose of big bulky items easily. And you want more opportunity to compost organics. This timeline outlines the City's plan to improve recycling services over the next three years.



**2014 Budget Proposal**  
**Impact on Solid Waste & Recycling Rate**

	Fee Revenue		Single Family	Multi- Family
<b><u>2013 Adopted Solid Waste &amp; Recycling Annual Rates:</u></b>	<b><u>3,908,115</u></b>		<b><u>\$ 38.78</u></b>	<b><u>\$ 23.96</u></b>
		Monthly	\$ 3.23	\$ 2.00

**IMPACT OF CURRENT SERVICE CHANGES:**

	Cost	Rate Impact	Single Family	Multi- Family
Eureka contract increase and other current service level changes	185,359	4.7%	\$ 1.84	\$ 1.14

**MODIFICATIONS TO RECYCLING PROGRAM:**

	Cost	Rate Impact	Single Family	Multi- Family
Increased plastics and single sort	998,640	25.6%	\$ 9.91	\$ 6.12
Increased backyard composting	54,700	1.4%	\$ 0.54	\$ 0.34
Additional education and public information (City sponsored)	68,400	1.8%	\$ 0.68	\$ 0.42
Increase funding for recycling drop off center (Advanced Disposal)	27,360	0.7%	\$ 0.27	\$ 0.17
Additional blue bins (single family only per assessment)	18,864	0.5%	\$ 0.24	\$ -
Additional carts (multi family only per assessment)	12,744	0.3%	\$ -	\$ 0.36
<b>Total Proposed Eureka Solid Waste Changes</b>	<b>1,180,708</b>	<b>30.2%</b>	<b>\$ 11.64</b>	<b>\$ 7.40</b>
<b>Grand Total Proposed Public Works and Eureka Changes</b>	<b>1,366,067</b>	<b>35.0%</b>	<b>\$ 13.48</b>	<b>\$ 8.54</b>

	Fee Revenue		Single Family	Multi- Family
<b><u>2014 Proposed Solid Waste &amp; Recycling Annual Rates:</u></b>	<b><u>5,274,182</u></b>	<b>Annually</b>	<b><u>\$ 52.26</u></b>	<b><u>\$ 32.50</u></b>
		Monthly	\$ 4.36	\$ 2.71