

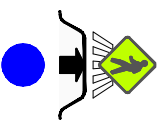
PREPARED BY TRAFFIC ENGINEERING DIVISION FOR THE CITY OF ST. PAUL, DEPARTMENT OF PUBLIC WORKS

CHARLES AVENUE PROJECT
ALDINE STREET TO PARK STREET

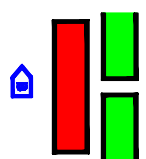
CITY OF SAINT PAUL
PROJECT NO. P-1375
STATE PROJECT NO. 164-091-016

PROJECT MAP
DRAWING NO.: DATE: JULY 25, 2012

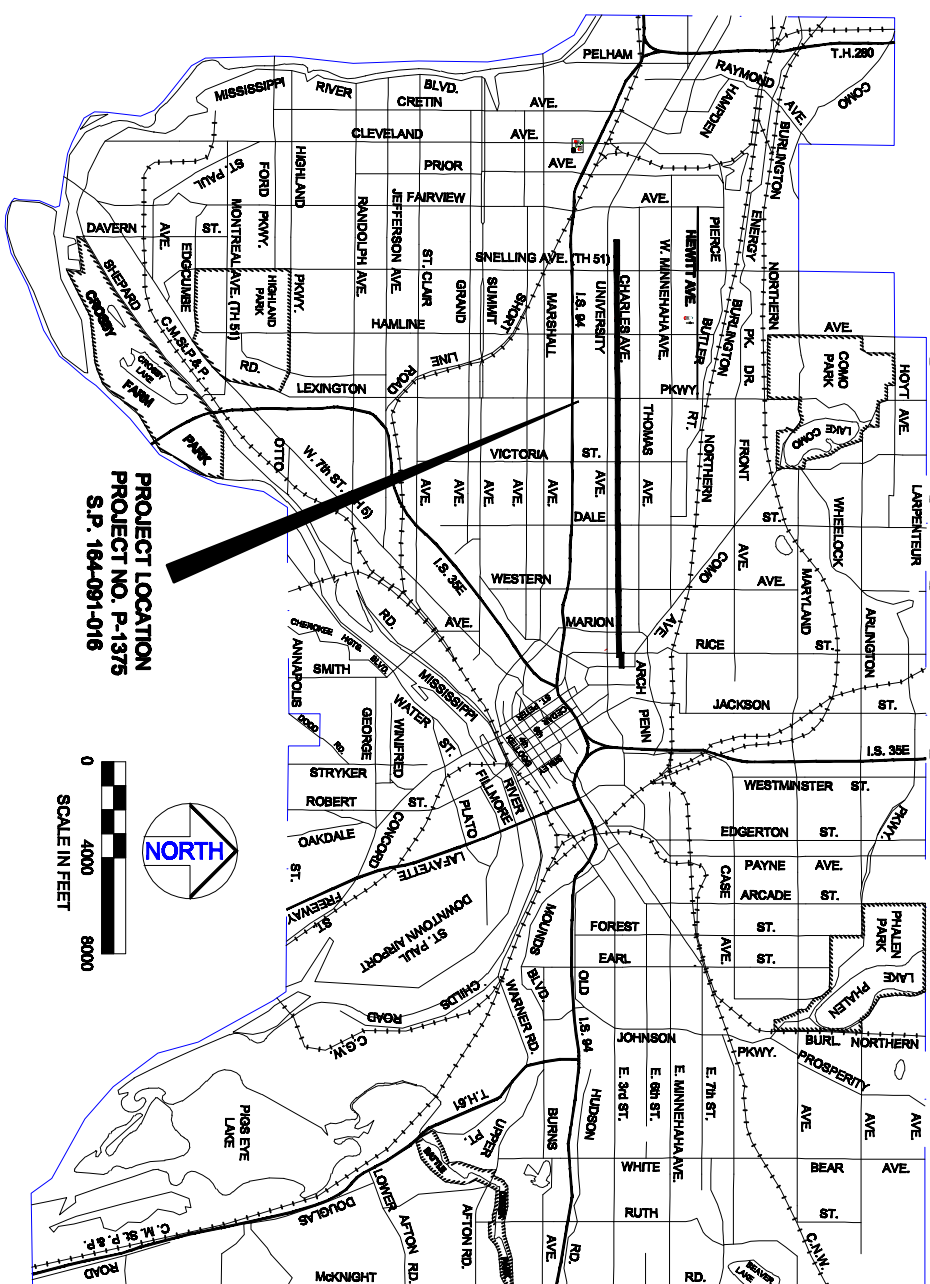
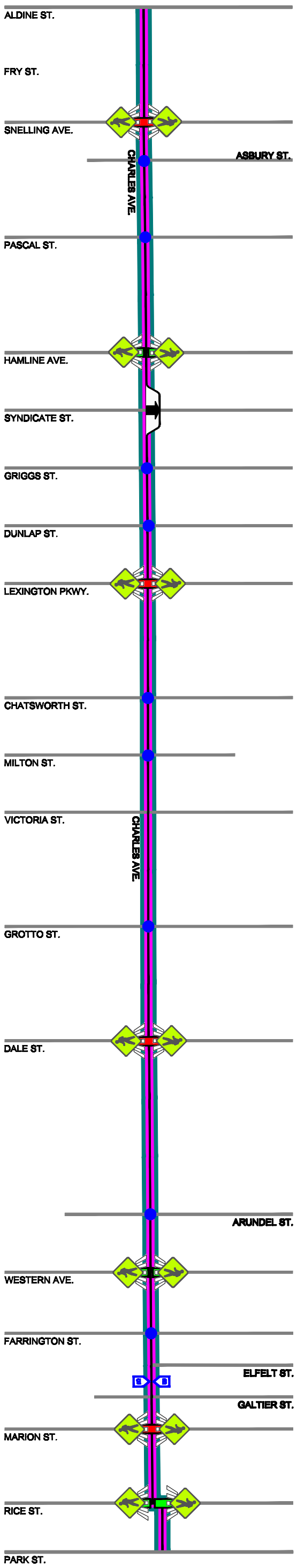
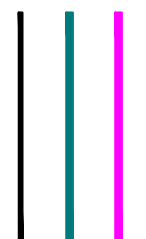
HIGH VISIBILITY CROSSING
RAISED INTERSECTION
NEW TRAFFIC CIRCLE



OPEN MEDIAN
REFUGE
BUMP OUT



SHARROWS
SIGNAGE
ROUTE



CITY OF ST. PAUL

CITY OF ST. PAUL
DEPARTMENT OF PUBLIC WORKS
AND
MINNESOTA DEPARTMENT OF
TRANSPORTATION

PROJECT MAP
OF
CHARLES AVENUE PROJECT
PROJECT NO. P-1375
S.P. 164-091-016