

Exhibit C

Legal Description for the
Vacation of the Levee Road Easement
Per Document No. 2062997

(November 28, 2011)

That part of the following described property:

That southeasterly 25.00 feet of Lots 1, 2 and 3, Block D, Robertson's Addition to West St. Paul, Ramsey County, Minnesota,

Which lies within a 60.00 foot wide strip of land, the center line of which is described as follows:

Commencing at the intersection of the center lines of Wabasha and Fourth Streets as shown on the recorded plat of the City of St. Paul, Ramsey County, Minnesota, said intersection more specifically described as being the following point in the Ramsey County Coordinate System as published by Ramsey County Public Works Department, Land Survey Division, final adjustment December 17, 1991, based upon the North American Datum of 1983 (1986 adjustment)(Y-coordinate = 156192.903 feet and X-coordinate = 575004.021 feet); thence South 34 degrees 32 minutes 47 seconds East (all bearings herein being per said Ramsey County Coordinate System) along the center line of said Wabasha Street, 351.44 feet to the following point in said Ramsey County Coordinate System (Y-coordinate = 155903.433 feet and X-coordinate = 575203.314 feet); thence North 55 degrees 41 minutes 11 seconds East, 0.49 feet; thence South 34 degrees 32 minutes 47 seconds East 119.60 feet; thence South 32 degrees 23 minutes 47 seconds East 547.99 feet; thence Southeasterly along a 984.25 foot radius tangential curve, concave to the Southwest, central angle 09 degrees 15 minutes 59 seconds, a distance of 159.18 feet; thence South 23 degrees 07 minutes 48 seconds East, tangent to said curve, 476.71 feet; thence North 66 degrees 52 minutes 13 seconds East 65.00 feet to the point of beginning of the center line to be described; thence North 66 degrees 52 minutes 13 seconds East 1.14 feet; thence Easterly and Southeasterly along a 140.00 foot radius, tangential curve, concave to the South, central angle 81 degrees 53 minutes 42 seconds a distance of 200.11 feet; thence South 31 degrees 14 minutes 05 seconds East, tangent to said curve, to the northwesterly line of Water Street, originally dedicated as Mill Street, said Robertson's Addition to West St. Paul and there terminating.

Loucks Associates

7200 Hemlock Lane, Suite 300

Minneapolis, Minnesota 55369-5592

Telephone: (763)424-5505 Fax: (763)424-5822

Web Page: www.LoucksAssociates.com

Planning • Civil Engineering • Land Surveying
Landscape Architecture • Environmental

I hereby certify that this survey, plan or report was
prepared by me or under my direct supervision and that
I am a duly Licensed Land Surveyor under the laws
of the State of Minnesota.


Richard L. Licht - PLS

26724

License No.

Date

S03148C-Vacation Exh Levee.dwg

N 156192.903
E 575004.021

Intersection of the center lines of Wabasha and Fourth Streets

S34°32'47"E
351.44

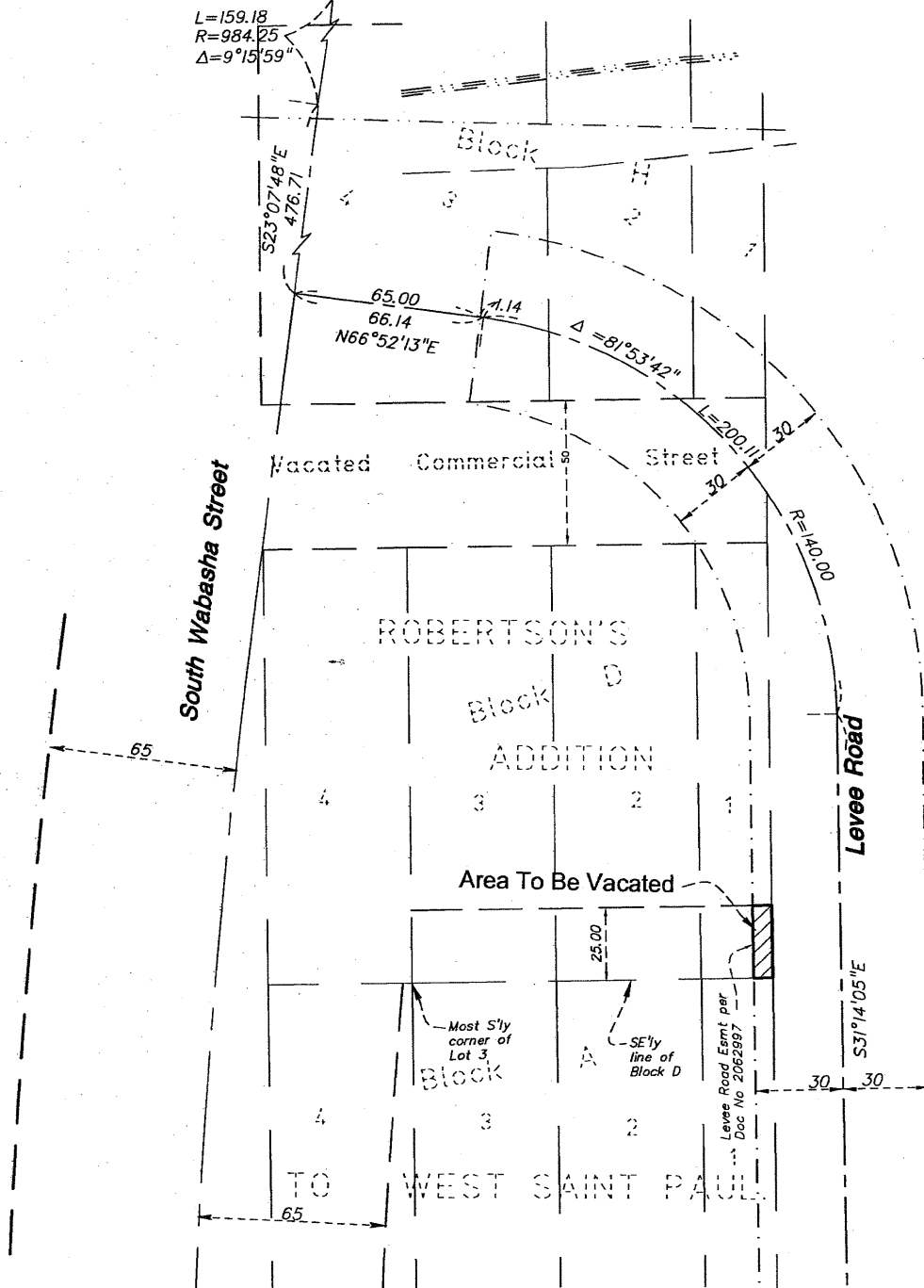
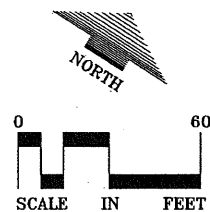
Center line of Wabasha Street

N 155903.433
E 575203.314

0.49
N55°41'11"E

119.60
S34°32'47"E

547.99
S32°23'47"E



Date _____