

# **Proposal for a Partnership with the Saint Paul City Council Audit Committee**

Monday, November 6<sup>th</sup>

3:55 – 4:30pm

# Today's Session

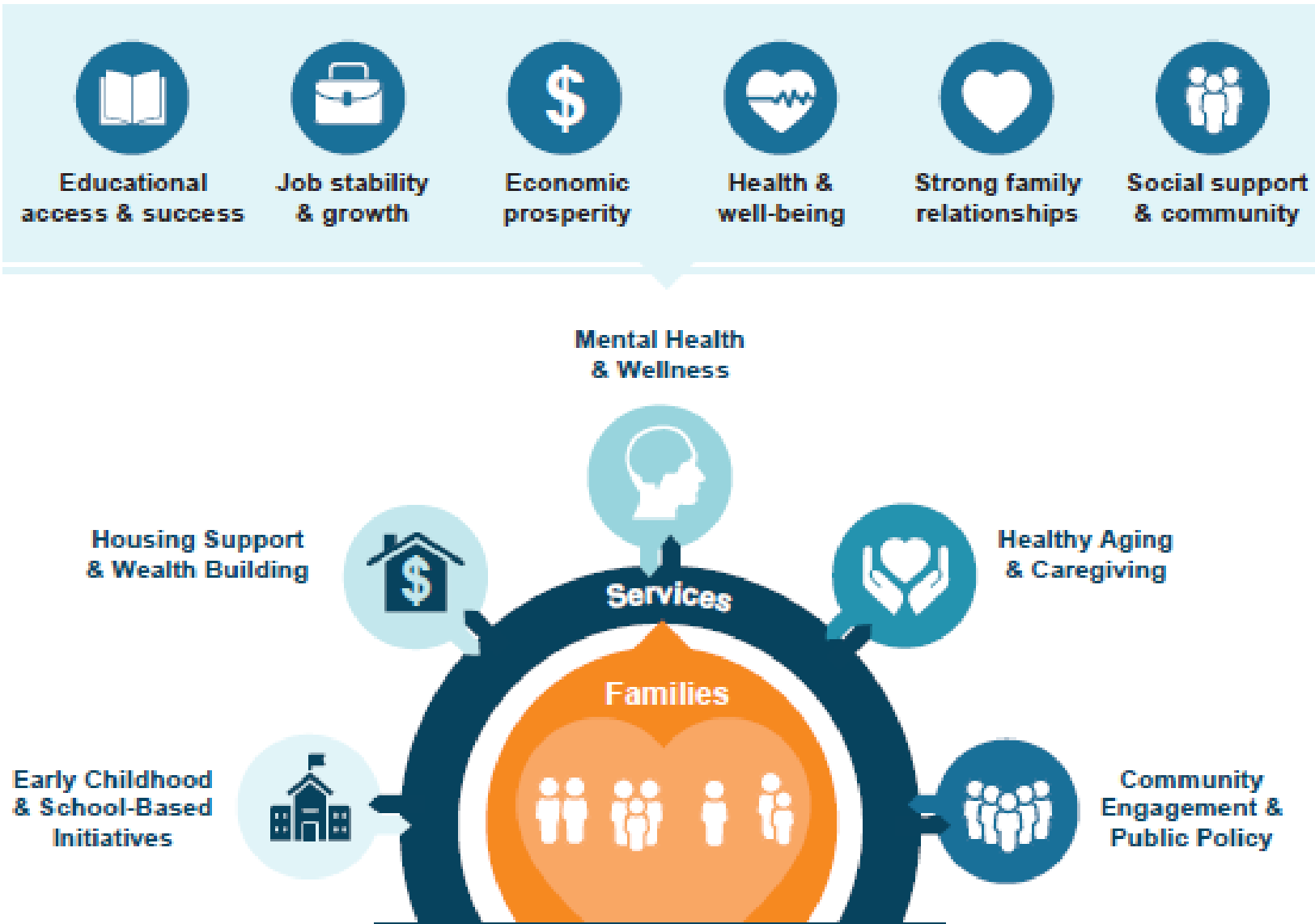
- About Wilder & Wilder Research
- Our proposed approach
- Cost structure
- Relevant project experience
- Questions & conversation



**The Amherst H. Wilder Foundation combines knowledge, compassion and action to improve lives today and for generations to come. We create lasting, positive change rooted in people through direct services, research and community building.**

## Wilder's Goals

Our goal is to build a strong network of support with communities and partners that helps families create and sustain –



# Whole Family Approach

Inputs	Activities	Whole Family Strategies	Short and Medium Term Outcomes	Long Term Outcomes
<p><b>Families</b></p> <p><b>Wilder staff</b></p> <p><b>Volunteers</b></p> <p><b>Community partners</b></p> <p><b>Wilder Foundation infrastructure</b></p> <p><b>Financial resources</b></p> <p><b>Staff training &amp; development</b></p>	<p><b>Early Childhood &amp; School-based Initiatives</b></p> <ul style="list-style-type: none"> <li>Preschool and childcare</li> <li>Parenting education &amp; resources</li> <li>Saint Paul Promise Neighborhood's academic and wraparound supports</li> <li>Achievement Plus full-service community school</li> </ul> <p><b>Housing Support &amp; Wealth Building</b></p> <ul style="list-style-type: none"> <li>Permanent supportive housing</li> <li>Rapid re-housing program</li> <li>Rental &amp; mortgage assistance</li> <li>RAISE financial stability and growth program</li> <li>Wraparound family supports</li> </ul> <p><b>Mental Health &amp; Wellness</b></p> <ul style="list-style-type: none"> <li>Care coordination &amp; referrals</li> <li>Multilingual and culturally-centered mental health services</li> <li>Community center with gathering space &amp; support groups</li> <li>African American Babies Coalition and Projects: training, education, and engagement</li> </ul> <p><b>Healthy Aging &amp; Caregiving</b></p> <ul style="list-style-type: none"> <li>Meals on Wheels food delivery and wellness checks</li> <li>In-home community care services</li> <li>Customized living services</li> <li>Health and wellness classes</li> <li>Wilder Connect: In-person, long term care support</li> <li>Caregiver resources, support groups, &amp; respite services</li> </ul> <p><b>Community Engagement &amp; Public Policy</b></p> <ul style="list-style-type: none"> <li>Mission-driven public policy advocacy</li> <li>Community Equity Program: immersive political leadership program for BIPOC community leaders</li> <li>Wilder Center community meeting spaces</li> </ul> <p><b>Wilder Research</b></p> <p>Research and program evaluation, community assessments, capacity-building and training, and data-informed decision-making</p> <p><b>Wilder Resource Management Group</b></p> <p>Human resources, Communications, Facilities &amp; property management, Financial services &amp; fundraising, Information technology, and Compliance</p>	<p>Collaborative assessments with families to identify goals, strengths, and needed supports</p> <p>Incorporating family voice into program planning through feedback sessions and governance structures</p> <p>Collective organizational learning and development</p> <p>Aligned and coordinated programs, services &amp; resources</p> <p>Creation of new services to support emerging family needs</p> <p>Strengthened community &amp; organizational partnerships to broaden our network of supports available to families</p> <p>Direct investments in family economic prosperity through flexible financial assistance and wealth-building support</p> <p>Development of creative &amp; flexible billing structures that meet families' needs and prevent disruptions to services</p> <p>Communication campaign for narrative change and awareness-building</p> <p>Development of integrated data systems across programs with information about services and availability in real-time</p> <p>Supporting Wilder staff and families through reassessment of HR infrastructure, and providing more wellness and crisis supports for staff</p>	<p>Increased family self-determination, agency, goal-planning, and decision-making</p> <p>Increased staff active listening and engagement</p> <p>Increased staff awareness of family needs &amp; strengths</p> <p>Improved trusted relationships between families and staff</p> <p>Increased family awareness of available supports &amp; services</p> <p>Increased collaboration with community partners to connect families to needed supports &amp; services</p> <p>Increased access to education, housing, mental health, aging, and caregiver supports</p> <p>Reduced structural- and policy-level barriers to serving families' holistic needs</p> <p>Increased access to useful, actionable data and information to identify needs and strengthen programming</p> <p>Increased flexible, responsive and supportive HR infrastructure &amp; resources</p>	<p><b>Families will create &amp; sustain...</b></p> <p><b>Educational access &amp; success</b> including improved school readiness, attendance, grades, and achievement</p> <p><b>Job stability &amp; growth</b> including career planning, job training, and job stability</p> <p><b>Economic prosperity</b> including increased earning and housing stability</p> <p><b>Health &amp; well-being</b> including improved physical, emotional, and mental health, and positive sense of well-being</p> <p><b>Strong &amp; positive family relationships</b> including increased parenting knowledge, warm &amp; nurturing relationships, parent involvement, and strong eldercare practices</p> <p><b>Social support &amp; community involvement</b> including increased community connectedness, leadership behavior, and civic participation</p> <p><b>Wilder staff family systems...</b></p> <p>Have the supports and resources to achieve stability and thrive</p>



## Wilder's Vision

Long-term community stability, prosperity, and well-being



# Wilder Values

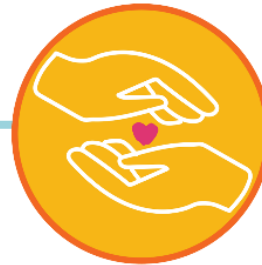
Our values guide how we work together:



**We listen with intent** to the people most affected so we can be part of the solution.



**We act with kindness** toward families, communities and each other.



**We build trusting relationships** knowing each person and community has their own answers.



**We take action with others** to challenge systems so all people and communities can reach their goals.

# Wilder Research

## Primary Services

- Process and outcome evaluations
- Population-based research
- Cost-benefit analysis
- Training, consultation and technical assistance
- Data management
- Communication of research findings



## Helping Organizations

- Assess the impact and economic value of their programs
- Improve operations and outcomes
- Plan for the future
- Allocate funds
- Inform policies



# Research Topics

**Arts and  
Culture**

**Community  
Safety and  
Criminal  
Justice**

**Early  
Childhood and  
Children**

**Education and  
Youth  
Development**

**Housing and  
Homelessness**

**Mental Health  
and Well-Being**

**Older Adults  
and Aging**

**Public Health  
and Health  
Care**

**Substance Use**



# Philosophy

- Collaborative, community-engaged, and culturally responsive
- Commitment to Saint Paul and the East Metro
- Integrate cultural considerations in all aspects of our work, including research design, data collection, data analysis, and reporting and interpretation of results
- Continuous improvement approach to our implementation of research and evaluation

# Our Understanding

- Saint Paul City Council Audit Committee is seeking a contractor to **conduct program and financial evaluations** designed to **improve the timing of delivery and quality of Saint Paul City services** with the goal to build greater public trust and satisfaction with city services.
- **Two specified evaluations** of City programs, each to be completed within a **three month period**, using appropriate methods which may include surveys, focus groups, key informant interviews, quantitative data analyses, qualitative data thematic analyses, and/or document review.
- Providing **written reports with recommendations** for improvements as well as **presentations** to the City Council Audit Committee and, if requested, to City staff and leaders.

# Project Outline

- Activity 1: **Finalize project scope and conduct ongoing project management** (Month 1)
  - Deliverables (Month 1): Project work plan with expected processes and timelines for each task, finalized list of stakeholders developed in collaboration with the Audit Committee
- Activity 2: **Conduct primary data collection** (Months 1 and 2)
  - Deliverables (Months 1 and 2): Document review checklist, questions/data collection tools
- Activity 3: **Analyze data and prepare reports** (Months 2 and 3)
  - Deliverables (Months 2 and 3): Mid-term report, final report, 1-2 virtual presentations including PPT slides

# **(1) Finalize project scope & conduct project management**

- **Task 1a:** Preliminary meeting to discuss the scope of services
- **Task 1b:** Check-in meetings with the Audit Committee (ongoing)
- **Task 1c:** Internal Wilder meetings (ongoing)
- **Task 1d:** Project management and communication (ongoing)
- **Task 1e:** Finalize stakeholders for data collection

## (2) Conduct primary data collection

- Task 2a1: Document review
- Task 2a2: Collect and analyze documents
- Task 2b: Develop common questions to ask stakeholders
- Task 2c: Conduct 1 to 3 focus groups/listening sessions with key stakeholders
- Task 2d: Conduct 3 KIIs with leaders
- Task 2e: Conduct survey of stakeholders
- Task 2f: Conduct financial evaluation of service



### **(3) Analyze data and prepare reports**

- **Task 3a:** Analyze results and determine themes and findings
- **Task 3b:** Write mid-term report
- **Task 3c:** Prepare final report and present findings



# Your Responsibilities

- Engage in discussions about refinements to data collection tools, engagement strategies, incentive options, and general administration
- Meet on a regular basis to discuss progress and challenges
- Provide Wilder key stakeholder information
- Provide Wilder with project related administrative data and key project related documents
- Review data collection tools
- Provide timely feedback on deliverables

# Project Team

- **Chris Bray:** Project **Lead**, Senior Researcher
- **Heather Britt:** Project **Partner**, Senior Researcher
- **Rachel Fields:** Project **Partner**, Research Librarian
- Team members from our **Zeta unit:** Primary Data Collection





# Cost Structure

Project Activity	Estimated Cost
Project Management (Per Project)	\$5,000
Small Survey	\$5,000
Large Survey	\$10,000
Focus Group - 1*	\$2,500
Focus Group - 3*	\$5,000
Key Informant Interviews – 3 to 5*	\$3,000
Key Informant Interviews – 5 to 7*	\$4,500
Key Informant Interviews – 7 to 5*	\$6,000
Literature Review	\$3,000
Community Engagement	\$4,500
Quantitative Analysis (Two Datasets)	\$9,000
ROI or Economic Analysis	\$7,500
Review & Evaluation of Potential Secondary Data Sources	\$2,500
Review & Synthesis of Project Documents	\$3,000
Strategic Plan Facilitation – 1 Session	\$4,000
Report Writing with Recommendations	\$7,500
Communications/Dissemination Plan	\$1,500

# Project Examples

- City of Saint Paul Families First Rent Supplement Evaluation
- Sprockets Evaluation and Data Management
- Saint Paul Public Libraries Community Services Evaluation
- City of Minneapolis—ARPA Performance Reporting Planning Support



**What questions do you have for us?**

Thank you for the opportunity to have a conversation about this opportunity.