

Date: February 23, 2016
File #: 13 - 220496
Folder Name: 1020 WILSON AVE
PIN: 332922310059





Date: February 23, 2016

File #: 13 - 220496

Folder Name: 1020 WILSON AVE

PIN: 332922310059

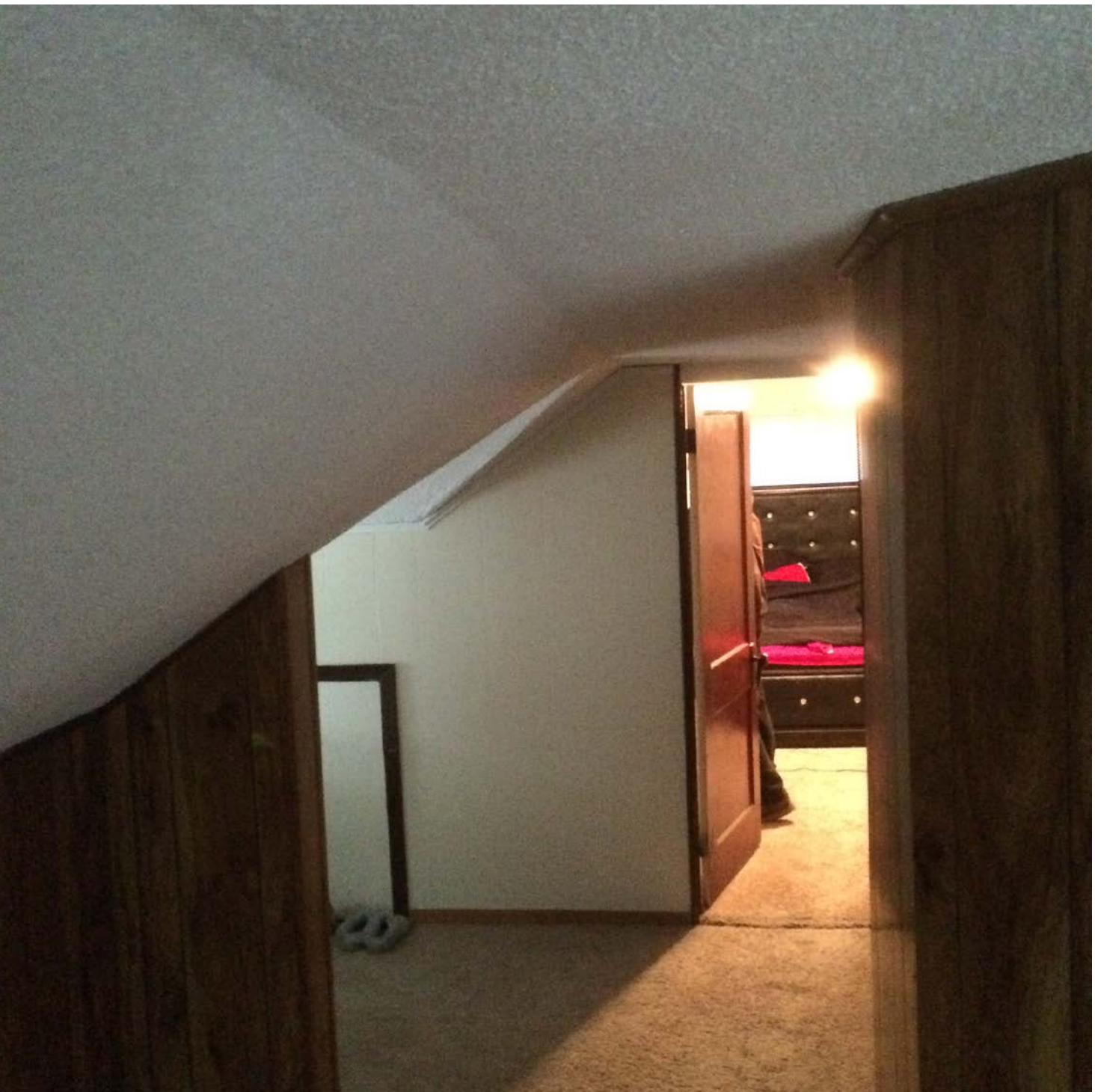
Date: February 23, 2016
File #: 13 - 220496
Folder Name: 1020 WILSON AVE
PIN: 332922310059



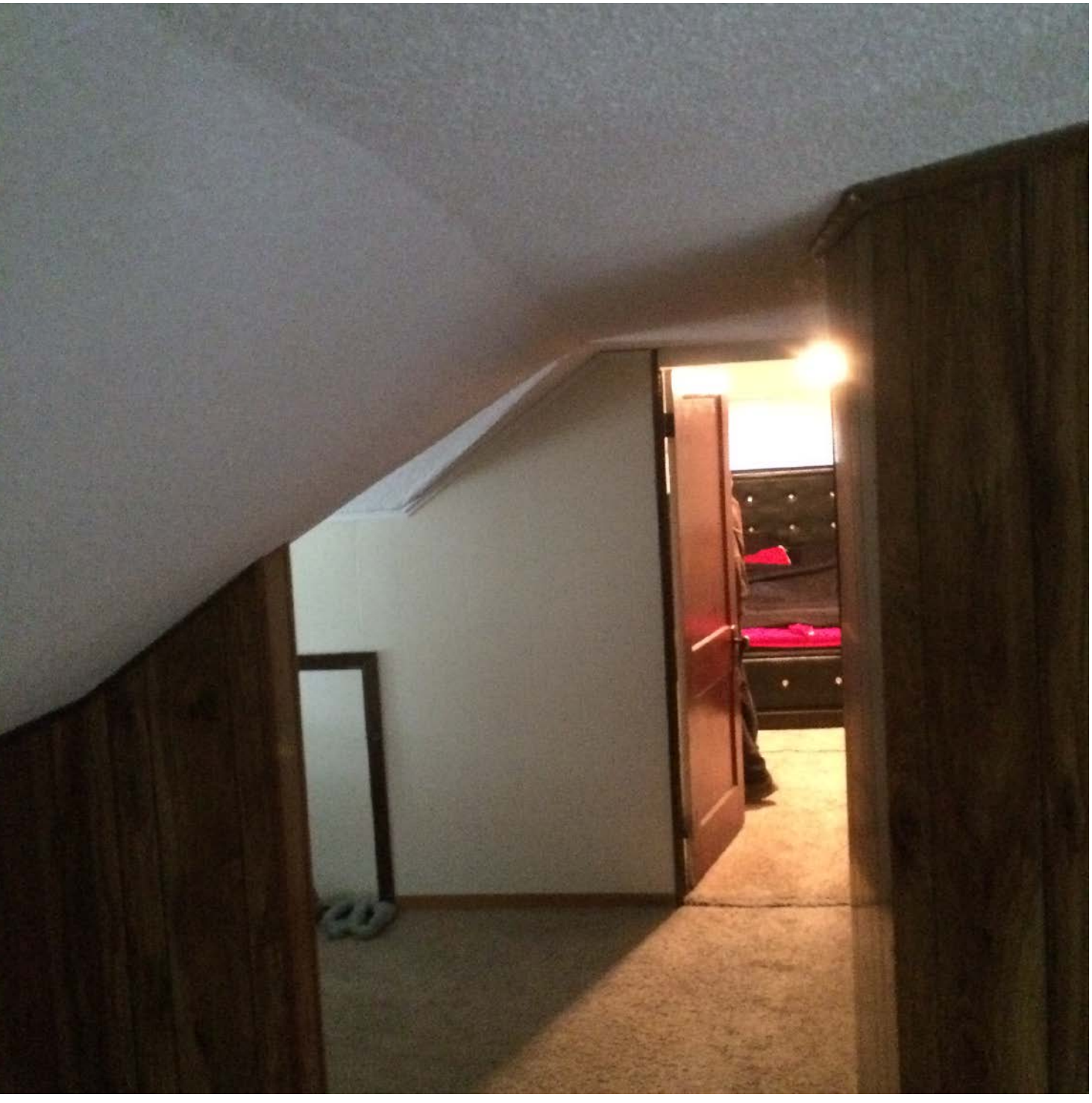
Date: February 23, 2016
File #: 13 - 220496
Folder Name: 1020 WILSON AVE
PIN: 332922310059



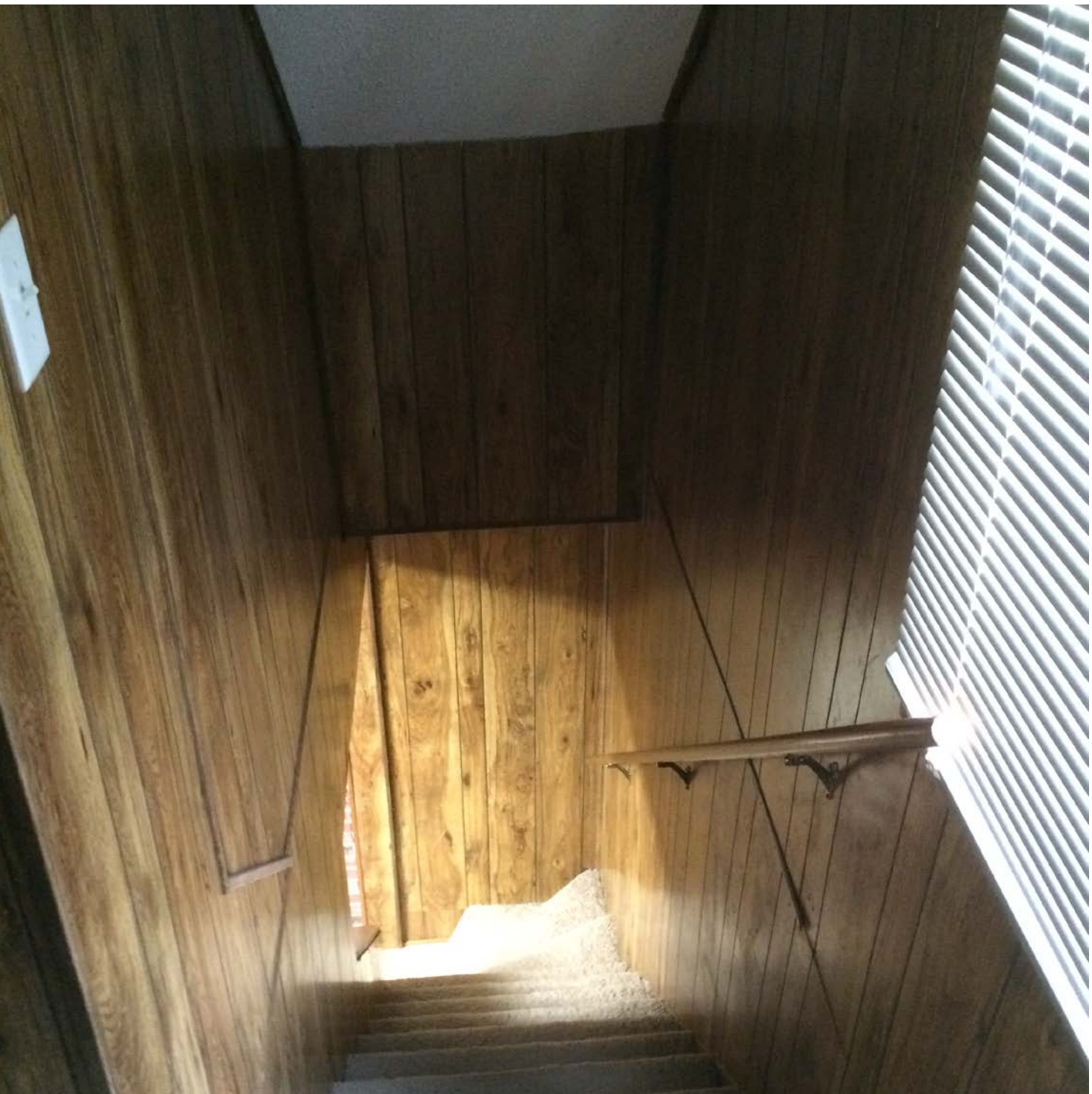
Date: February 23, 2016
File #: 13 - 220496
Folder Name: 1020 WILSON AVE
PIN: 332922310059



Date: February 23, 2016
File #: 13 - 220496
Folder Name: 1020 WILSON AVE
PIN: 332922310059



Date: February 23, 2016
File #: 13 - 220496
Folder Name: 1020 WILSON AVE
PIN: 332922310059



Date: February 23, 2016
File #: 13 - 220496
Folder Name: 1020 WILSON AVE
PIN: 332922310059

SERIAL NO. RMLNQ221407533 MFG. DATE: 27MAY2014
MODEL NO. 9G40S - 40F1 - Cap. U.S. Gals. 40
Input BTUH 40,000 TYPE GAS - NATURAL
Gas PRESS. IN. W.C. - Manifold - 4.0 Max. Inlet - 10.5 Min. Inlet - 5.0
ANS Z21.10.1-2013 CSA 4.1-2013



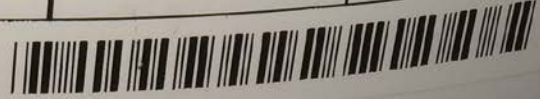
MADE IN MEXICO

COMPLIES WITH JURISDICTIONS HAVING 40ng/J NOx REGULATIONS
MINIMUM CLEARANCES FROM COMBUSTIBLE OR NONCOMBUSTIBLE
CONSTRUCTION. 0" Sides and 0" rear in a closet - 0" Sides and rear in an
alcove. 3" front of control to closet door
12" from top pan to ceiling
May be installed in an alcove or closet and on
combustible flooring.

CERTIFIED FOR INSTALLATIONS
UP TO 7700 FT. ALTITUDE

MAX WORKING PRESSURE 150 PSI

Rheem Sales Company, Inc.
Water Heating Division
Montgomery, Alabama 36117 USA



in
Ha
Wa
from
will at
action
located
damaged
such areas
mented th
drained, be
See Use and
CAUTION - Ha
scald injury. Do
on this water he
for instructions
ture setting
WARNING - Ar
125° F may cause
and instructions