

NON-CONSERVATION LAND

Commissioner District 3

City of St. Paul

| Notice No. | PIN | Property Address | Property Type | Property Description | Lot Size | Legal Description |
|------------|------------------|--|---------------|--|-------------|---|
| 16-027 | 19-29-22-21-0048 | Jackson Street (South of 1609 Jackson Street) | Residential | Vacant land | 50' x 130' | Gurney Highland Park, Lots 7 & 8, Block 9 |
| 16-028 | 19-29-22-21-0049 | Jackson Street (South of 1609 Jackson Street) | Residential | Vacant land | 50' x 130' | Gurney Highland Park, Lots 9 & 10, Block 9 |
| 16-029 | 19-29-22-21-0105 | Wheelock Drive (South of 1609 Jackson Street) | Residential | Vacant land | 100' x 160' | Gurney Highland Park, vacated street accruing & Lots 15 thru Lot 18, Block 9 |
| 16-030 | 19-29-22-33-0045 | 1247 Sylvan Street (South of 40 Orange Avenue W) | Residential | Vacant land | 61' x 123' | Wifelburg Hills, the South 61 feet of Lots 1, 2, 3 & 4, Block 5, Wifelburg Hills, except the West 26 feet thereof of Lot 4 |
| 16-105 | 30-29-22-32-0073 | 925 Sylvan Street | Residential | Vacant house | 54' x 140' | Bergholtz Sub. of Lots 2, 3, 4, 5, 6, 10, 11, 14 & 15, Bazille's Acre Lots to St. Paul, Lot 15, Block 1, Bergholtz Rearrangement A and in said Bergholtz Sub. of Lots 2, 3, 4, 5, 6, 10, 11, 14 & 15, Bazille's Acre Lots to St. Paul; Lot 1, Block 3 |
| 16-141 | 35-29-23-11-0200 | 677 Thomas Avenue & 610 St. Albans Street N | Residential | Two houses on one parcel- one house is vacant (610); the other is occupied (677) | 34' x 124' | Chute Brothers Division No. 4 Addition to the City of St. Paul, Minn., Lot 16 |
| 16-142 | 35-29-23-13-0031 | 806 Thomas Avenue (Between 802-810 Thomas Avenue) | Residential | Vacant land | 40' x 124' | Chute Brothers Division No. 14 Addition to the City of St. Paul, Minn., Lot 2 |
| 16-155 | 36-29-23-13-0029 | 332 Thomas Avenue (Between 330-336 Thomas Avenue) | Residential | Vacant land | 25' x 132' | Warren & Rice's Addition to Saint Paul, Lot 10, Block 7 |
| 16-157 | 36-29-23-22-0017 | 549 Van Buren Avenue | Residential | Vacant house | 40' x 125' | Corrected Map of Smith's Subdivision of Block 3 of Stinson's Division of NW 1/4, Sec. 36, T. 29, R. 23 West, Lot 33 |
| 16-159 | 36-29-23-23-0026 | 521 Edmund Avenue (Between 519-527 Edmund Avenue) | Residential | Vacant land | 40' x 124' | H. M. Ranney's Subdivision Block 11, Stinson's Division to St. Paul, Minn., Lot 25, Block 1 |

NON-CONSERVATION LAND

Commissioner District 6

City of St. Paul

| Notice No. | PIN | Property Address | Property Type | Property Description | Lot Size | Legal Description |
|-------------------|------------------|------------------------------|----------------------|-----------------------------|-----------------|--|
| 16-036 | 20-29-22-43-0122 | 653 Hyacinth Avenue E | Residential | Vacant land | 30' x 123' | Stone & Morton's Addition to the City of St. Paul, Lot 23, Block 1 |
| 16-037 | 20-29-22-44-0072 | 718 Orange Avenue E | Residential | Vacant house | 40' x 121' | Oak Ville Park, Lot 5, Block 9 |
| 16-038 | 21-28-23-14-0004 | Davern Street & 7th Street W | Commercial | Vacant land | 8,778 Sq. Ft. | Snelling Out Lots, subject to easements & except the West 185.03 feet, Lot 6 |
| 16-039 | 22-29-22-23-0058 | 1545 Etna Street | Residential | Vacant house | 55' x 125' | Lakeview Addition No. 1, except the South 15 feet; Lot 42 & all of Lot 43 & the South 20 feet of Lot 44, Block 3 |
| 16-041 | 22-29-22-31-0042 | 1404 Barclay Street | Residential | Vacant land | 52' x 151' | Rogers and Hendricks Acre Lots No. 2, except the East 150 feet, the South 52 feet of Lot 8, Block 1 |
| 16-043 | 23-29-22-34-0157 | 1901 Maryland Avenue E | Residential | Vacant land | 5,237 sq. ft. | Hazel Park Division 8, St. Paul, Minn., vacated street accruing & Lot 14, Block 3 |
| 16-059 | 26-29-22-31-0045 | 1954 Case Avenue | Residential | Vacant house | 4,892 sq. ft. | Beaver Lake Heights, that part of Lot 3, lying East of a line running from a point on the North line of & 35 feet East from Northwest corner to the Southeast corner of said Lot 3 & all of Lot 2, Block 9 |
| 16-062 | 26-29-22-32-0074 | 1799 York Avenue | Residential | Vacant house | 40' x 100' | Hazel Park Division 4, Lot 21, Block 3 |
| 16-065 | 26-29-22-42-0160 | 2070 Manitou Avenue | Residential | Vacant house | 5,000 sq. ft. | Beaver Lake Heights, Lot 10, Block 4 |
| 16-071 | 27-29-22-42-0130 | 1549 7th Street E | Residential | Occupied house | 80' x 148' | Lots 17 and 18, Block 3 of Denslow's Rearrangement of Lots 5, 6, 7, 8, 9, 10, 11, 12, Block 2, Lots 9, 10, 11, 12, 13, 14, 15, 16, 17, 18, 19, Block 3, and Lot 11, Block 4 Cruickshank's Garden Lots |
| 16-073 | 27-29-22-44-0137 | 1695 Bush Avenue | Residential | Vacant land | 40' x 127' | J. N. Roger's 4th Addition to St. Paul, Lot 25, Block 2 |

NON-CONSERVATION LAND

| | | | | | | |
|--------|------------------|--|-------------|--|------------|--|
| 16-075 | 28-29-22-12-0186 | 1079 Jessamine Avenue E | Residential | Occupied house | 40' x 122' | Cloverdale, St. Paul, Minn., Lot 20, Block 6 |
| 16-076 | 28-29-22-13-0004 | 1100 Magnolia Avenue E (Between 1096 - 1104 Magnolia Avenue E) | Residential | Vacant land | 41' x 125' | Governor Johnson Addition, Lot 5, Block 1 |
| 16-078 | 28-29-22-21-0134 | 995 Rose Avenue E | Residential | Occupied house | 39' x 122' | Eastville Heights, Lot 30, Block 3 |
| 16-083 | 28-29-22-34-0044 | 1004 Bush Avenue | Residential | Vacant land | 75' x 127' | Terry's Addition to the City of St. Paul, County of Ramsey, State of Minnesota, the West 1/2 of Lot 11 & all of Lot 12, Block 12 |
| 16-086 | 28-29-22-43-0026 | 1176 Ross Avenue & 797 Duluth St. | Residential | Two houses on one parcel- both houses are vacant | 49' x 127' | Terry's Addition to the City of St. Paul, County of Ramsey, State of Minnesota, Lot 1, Block 3 |
| 16-088 | 29-29-22-11-0022 | 758 Maryland Avenue E (Between 752-760 Maryland Avenue E) | Residential | Vacant land | 40' x 121' | Oak Ville Park, Lot 6, Block 14 |
| 16-089 | 29-29-22-11-0040 | 722 Maryland Avenue E (Between 718-728 Maryland Avenue E) | Residential | Vacant land | 40' x 121' | Oak Ville Park, Lot 4, Block 15 |
| 16-091 | 29-29-22-14-0007 | 785 Cook Avenue E | Residential | Occupied house | 40' x 125' | E. M. Mackubin's Subdivision of Block 1, Arlington Hills Addition, Lot 11, Block 1 |
| 16-092 | 29-29-22-14-0029 | 759 Cook Avenue E | Residential | Vacant house - Building is scheduled to be removed prior to Jan 1 2017 | 40' x 125' | Arlington Hills Addition to St. Paul, Lot 16, Block 2 |
| 16-136 | 34-29-22-22-0126 | 1333 Margaret Street (Between 1327-1337 Margaret Street) | Residential | Vacant land | 40' x 130' | Knauft's Addition to the City of St. Paul, the South 1/2 of vacated alley adjacent & Lot 21, Block 2 |

NON-CONSERVATION LAND

| Commissioner District 5 | | | | | | |
|--------------------------------|------------------|--|----------------------|--|--------------------------------|---|
| City of St. Paul | | | | | | |
| Notice No. | PIN | Property Address | Property Type | Property Description | Lot Size | Legal Description |
| 16-011 | 07-28-22-14-0066 | 82 George Street W (Between 78-84 George Street W) | Residential | Vacant land | 37' x 100' and 12' x 25' | West St. Paul, subject to & with drive easement the following; The West 12 feet of the North 1/2 of Lot 8 & the West 12 feet of Lots 9 & 10, also the East 25 feet of Lots 1 & 2, Block 100 |
| 16-012 | 07-28-22-32-0059 | 667 Smith Avenue S (Between 663-671 Smith Avenue S) | Residential | Vacant land | 48' x 175' and 10' x 52' | Auditor's Subdivision No. 54 St. Paul, Minn., the West 10 feet of Lot 7 & all of Lot 6 |
| 16-018 | 08-28-22-41-0090 | 775 Andrew Street | Residential | Vacant land | 40' x 123' | Smedley's Addition to Saint Paul, Lot 24, Block 1 |
| 16-020 | 09-28-22-33-0042 | 503 Winona Street E | Residential | Vacant house - Building is scheduled to be removed prior to Jan. 1, 2017 | 80' x 123' | The West St. Paul Real Estate and Improvement Syndicate Addition No. 2, Lots 17 & 18, Block 34 |
| 16-022 | 11-28-23-42-0028 | 486 Victoria Street S | Residential | Vacant house | 35' x 150' | Clarke's Addition to the City of St. Paul, Lot 20, Block 2 |
| 16-113 | 32-29-22-11-0017 | 735 Margaret Street | Residential | Vacant house | 60' x 125' | Schurmeier and Evan's Addition to St. Paul, the West 1/2 of Lot 24 & all of Lot 23, Block 2 |
| 16-117 | 32-29-22-22-0023 | 445 Mount Ida Street | Residential | Vacant house | 40' x 102' | Warren & Winslow's Addition to the Town of St. Paul, except the East 10 feet of Lot 16, Block 8 |

NON-CONSERVATION LAND

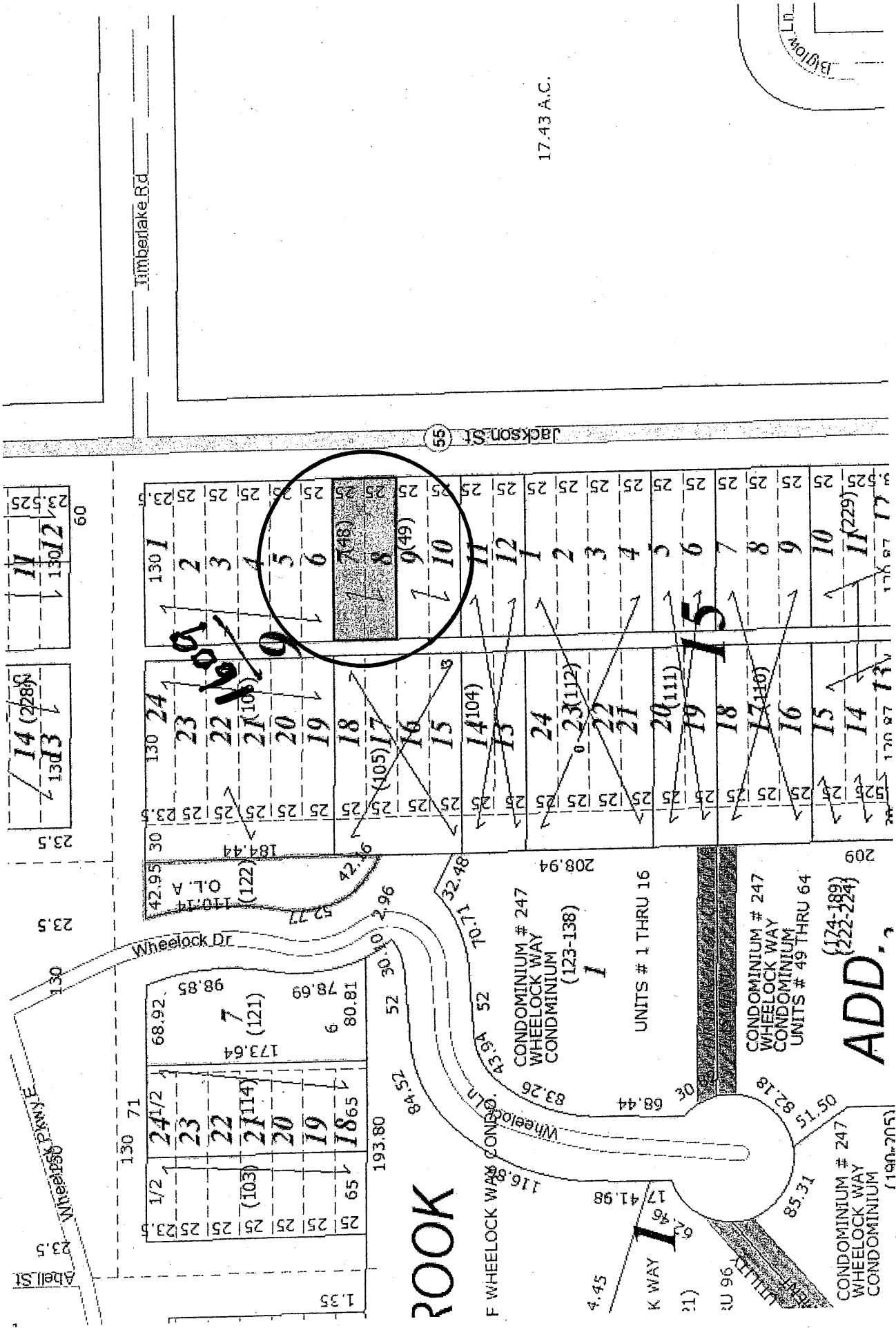
Commissioner District 4

City of St. Paul

| Notice No. | PIN | Property Address | Property Type | Property Description | Lot Size | Legal Description |
|-------------------|------------------|--|----------------------|-----------------------------|-----------------|---|
| 16-150 | 35-29-23-34-0129 | 940 Iglehart Avenue (Between 936-944 Iglehart Avenue) | Residential | Vacant land | 40' x 115' | Marshall Boulevard Addition to the City of St. Paul, Lot 5, Block A |

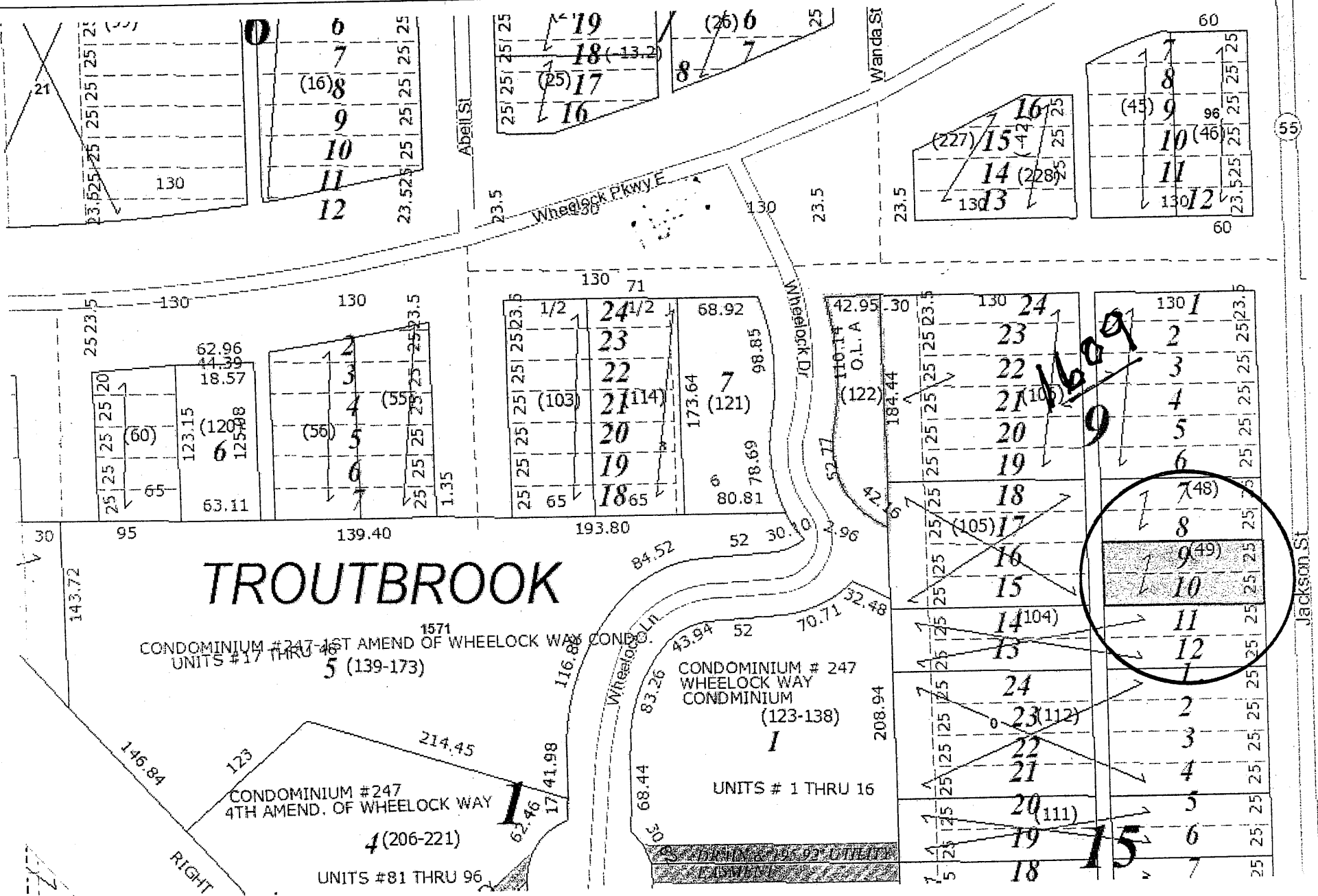


CD 3 19-29-22-21-0048 South of 1609 Jackson Street (Jackson Street)



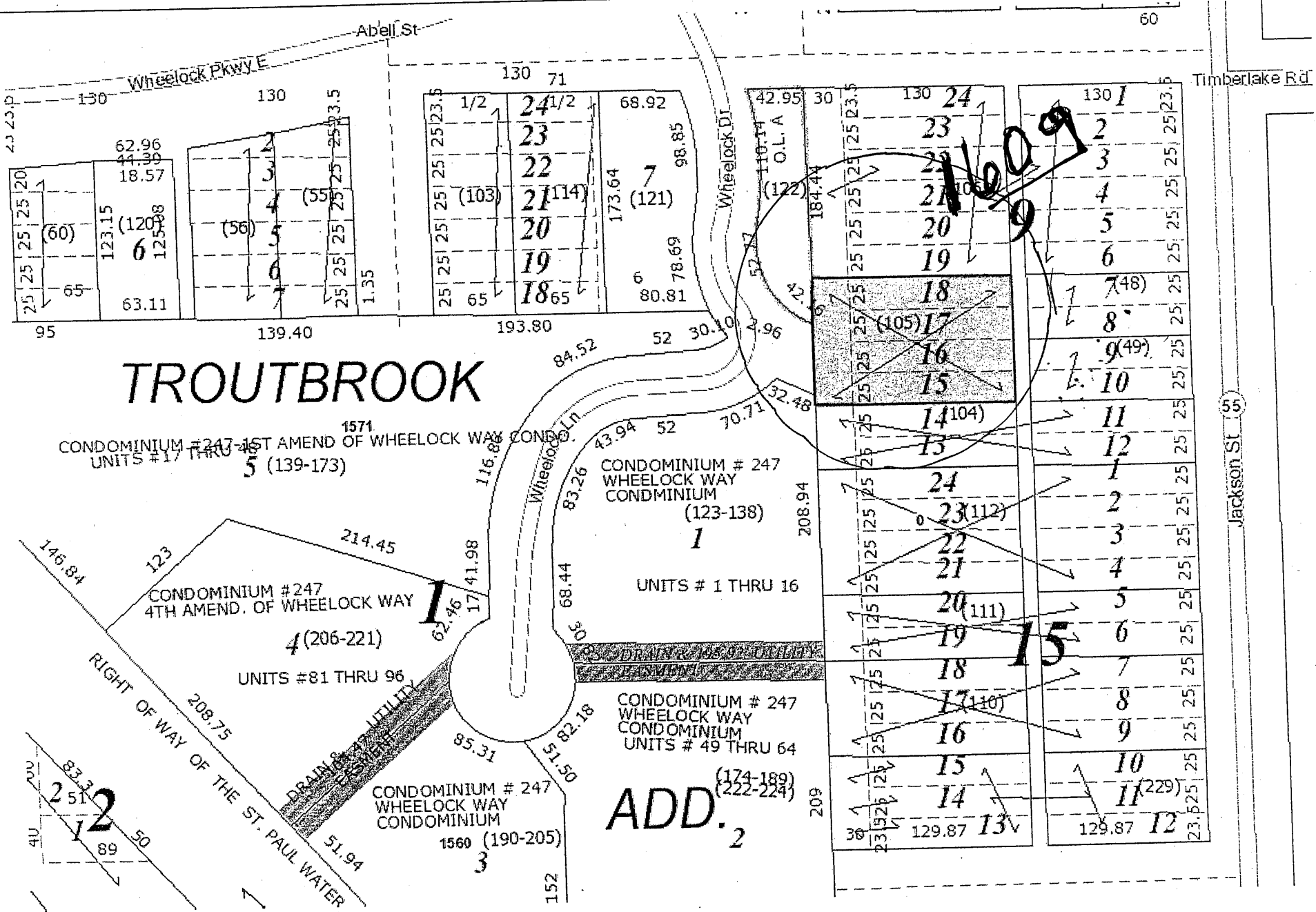


CD 3 19-29-22-21-0049 South of 1609 Jackson Street (Jackson Street)



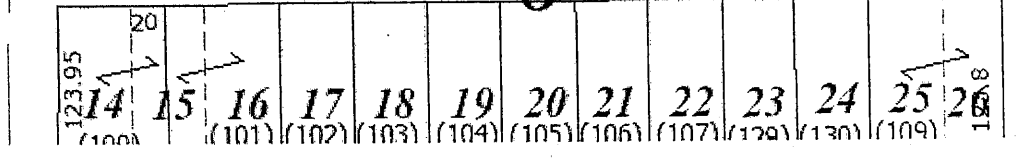
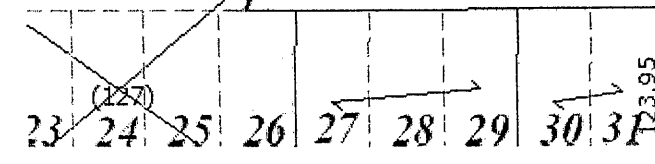
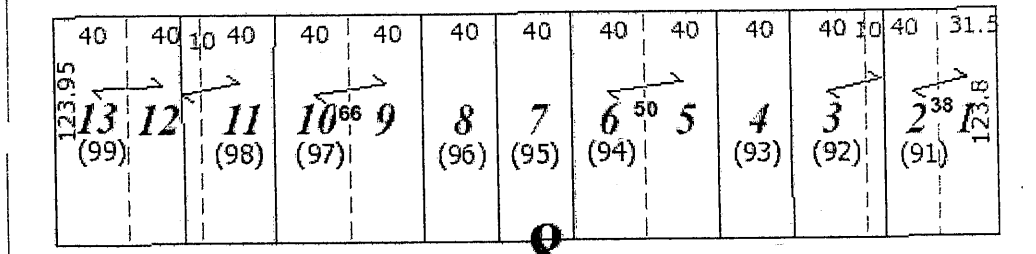
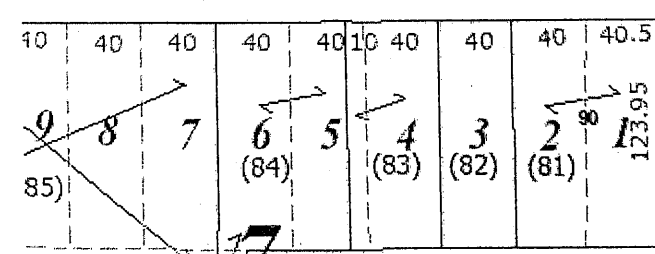
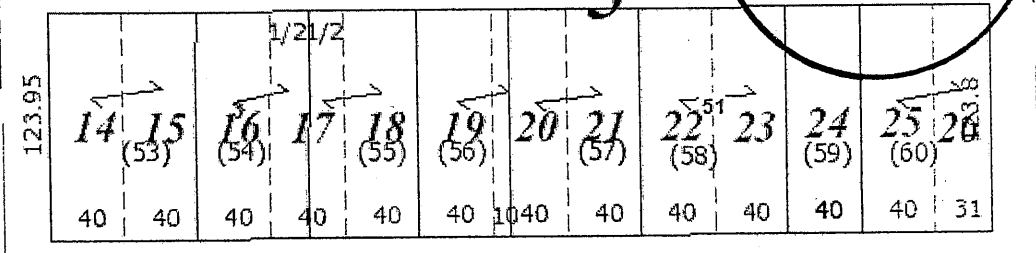
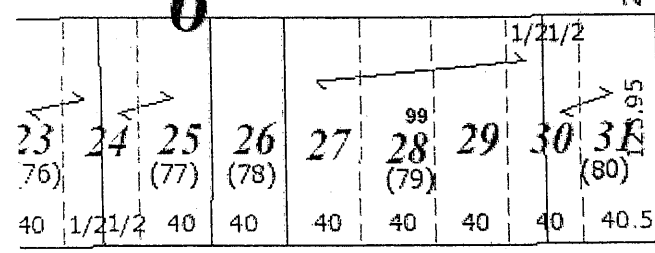
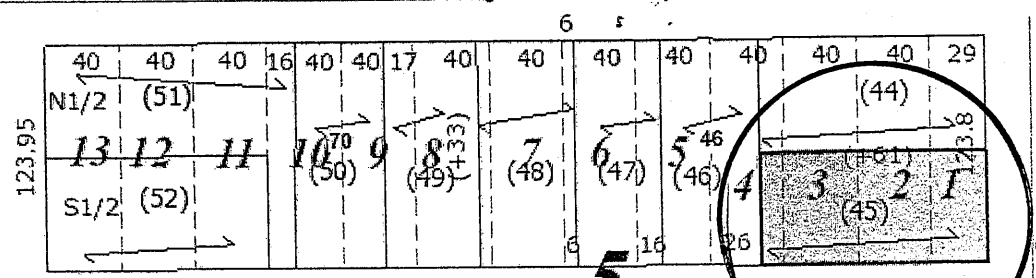
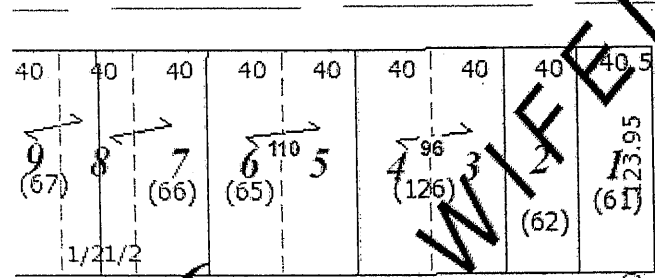
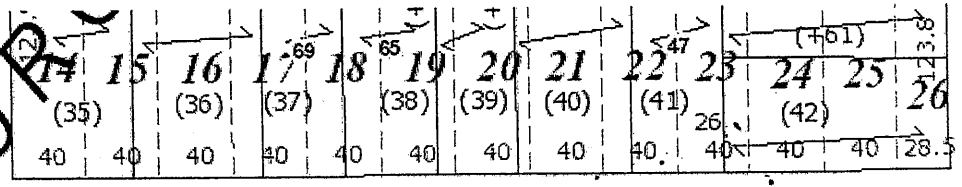
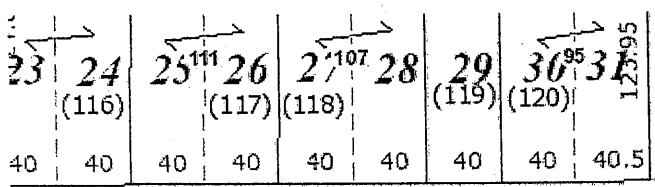


CD 3 19-29-22-21-0105 South of 1609 Jackson Street (Wheelock Drive)





CD 3 19-29-22-33-0045 South of 40 Orange Avenue W
(1247 Sylvan Street)



WIFELEBUR

13
180.07
120
60
25
25
125
24
125
1/2
25

| | | | | | | | | | | | | | | | | | | | | |
|-----------|-------|----------|----------|------------|------------|------------|------------|---|-----------|-----------|-----------|-----------|-----------|-----------|-----------|------------------|-----|---|------------|-------------|
| 40 (3) | 3 | 2 (2) | 1 (1) | 13 (41) | 12 (40) | 11 (39) | 10 (38) | 9 | 8 (37) | 7 (36) | 6 (35) | 5 (34) | 4 (33) | 3 (31) | 2 (30) | SUB 1 (29) | 120 | 20336 FASE 20336 BAZILLES ADD. A (28) | 34 (26) | 145 (25) |
| 120 | 120 | 120 | 120 | | | | | | 40 | 30 | 20 | | | | | | | | | |
| 41.25 | 41.25 | 41.25 | 41.25 | 50 | 50 | 50 | 40 | | 50 | 50 | 50 | 50 | 50 | 50 | 50 | 59 | 50 | 50 | 45 | 45 |

| | | | | | | | | | | | | | | | | | | | | |
|-------|-------|------|-------|------|------|-------|----|----|----|----|----|----|----|----|----|----|----|----|----|----|
| 34.08 | 34.07 | 4 | 34.85 | | | | | | | | | | | | | | | | | |
| 12 | 11 | 10 | 9 | 8 | 7 | 6 | 5 | 4 | 3 | 2 | 1 | | | | | | | | | |
| 34.07 | 34.08 | 37.9 | 36 | 35.8 | 35.8 | 34.49 | | | | | | | | | | | | | | |
| 40 | 40 | 40 | 40 | 40 | 40 | 40 | 40 | 40 | 40 | 40 | 40 | 40 | 40 | 40 | 40 | 40 | 40 | 40 | 40 | 40 |

| | | | | | | | | | | | | | | | | | | | | |
|--------|-------|-----|-----|-----|-----|-----|-----|-----|-----|-----|-----|-----|-----|-----|-----|-----|-----|-----|-----|-----|
| 100 | 100 | 100 | 100 | 100 | 100 | 100 | 100 | 100 | 100 | 100 | 100 | 100 | 100 | 100 | 100 | 100 | 100 | 100 | 100 | 100 |
| 128.44 | (208) | 40 | 40 | 40 | 40 | 40 | 40 | 40 | 40 | 40 | 40 | 40 | 40 | 40 | 40 | 40 | 40 | 40 | 40 | 40 |
| 127.96 | (65) | 40 | 40 | 40 | 40 | 40 | 40 | 40 | 40 | 40 | 40 | 40 | 40 | 40 | 40 | 40 | 40 | 40 | 40 | 40 |

| | | | | | | | | | | | | | | | | | | | | |
|-------|----|----|----|----|----|----|----|----|----|----|----|----|----|----|----|----|----|----|----|----|
| 43.21 | 40 | 40 | 40 | 40 | 40 | 40 | 40 | 40 | 40 | 40 | 40 | 40 | 40 | 40 | 40 | 40 | 40 | 40 | 40 | 40 |
| 20 | 22 | 40 | 40 | 40 | 40 | 40 | 40 | 40 | 40 | 40 | 40 | 40 | 40 | 40 | 40 | 40 | 40 | 40 | 40 | 40 |
| 20 | 22 | 40 | 40 | 40 | 40 | 40 | 40 | 40 | 40 | 40 | 40 | 40 | 40 | 40 | 40 | 40 | 40 | 40 | 40 | 40 |

| | | | | | | | | | | | | | | | | | | | | |
|--------|------|----|----|----|----|----|----|----|----|----|----|----|----|----|----|----|----|----|----|----|
| 127.96 | (65) | 40 | 40 | 40 | 40 | 40 | 40 | 40 | 40 | 40 | 40 | 40 | 40 | 40 | 40 | 40 | 40 | 40 | 40 | 40 |
| 40 | 40 | 40 | 40 | 40 | 40 | 40 | 40 | 40 | 40 | 40 | 40 | 40 | 40 | 40 | 40 | 40 | 40 | 40 | 40 | 40 |
| 40 | 40 | 40 | 40 | 40 | 40 | 40 | 40 | 40 | 40 | 40 | 40 | 40 | 40 | 40 | 40 | 40 | 40 | 40 | 40 | 40 |

| | | | | | | | | | | | | | | | | | | | | |
|----|----|----|----|----|----|----|----|----|----|----|----|----|----|----|----|----|----|----|----|----|
| 20 | 22 | 40 | 40 | 40 | 40 | 40 | 40 | 40 | 40 | 40 | 40 | 40 | 40 | 40 | 40 | 40 | 40 | 40 | 40 | 40 |
|----|----|----|----|----|----|----|----|----|----|----|----|----|----|----|----|----|----|----|----|----|

| | | | | | | | | | | | | | | | | | | | | |
|----|----|----|----|----|----|----|----|----|----|----|----|----|----|----|----|----|----|----|----|----|
| 40 | 40 | 40 | 40 | 40 | 40 | 40 | 40 | 40 | 40 | 40 | 40 | 40 | 40 | 40 | 40 | 40 | 40 | 40 | 40 | 40 |
|----|----|----|----|----|----|----|----|----|----|----|----|----|----|----|----|----|----|----|----|----|

ADDITION



CD 3 35-29-23-11-0200 677 Thomas Avenue and 610 St. Albans Street N





CD 3 35-29-23-13-0031 Between 802-810 Thomas Avenue
(806 Thomas Avenue)

Thomas Ave

| | | | | | | | | | | | | | | | |
|-----------|------|------|------|------|------|------|------|------|------|------|------|------|------|------|----|
| 34.05 | 40 | 40 | 40 | 40 | 40 | 40 | 40 | 40 | 40 | 40 | 40 | 40 | 40 | 40 | |
| 15 | 14 | 13 | 12 | 11 | 10 | 9 | 8 | 7 | 6 | 5 | 4 | 3 | 2 | 1 | |
| 124 | (43) | (42) | (41) | (40) | (39) | (38) | (37) | (36) | (35) | (34) | (33) | (32) | (31) | (30) | |
| 14 | | | | | | | | | | | | | | | |
| 16 | 16 | 17 | 18 | 19 | 20 | 21 | 22 | 23 | 24 | 25 | 26 | 27 | 28 | 29 | 30 |
| 124 | (44) | (45) | (46) | (47) | (48) | (49) | (50) | (51) | (52) | (53) | (54) | (55) | (56) | (57) | |
| 34.21 | 40 | 40 | 40 | 40 | 40 | 40 | 40 | 40 | 40 | 40 | 40 | 40 | 40 | 40 | 40 |
| 3 | | | | | | | | | | | | | | | |

| | | | | | | | |
|-------|------|------|------|------|------|------|----|
| 34.05 | 40 | 40 | 40 | 40 | 40 | 40 | 40 |
| 15 | 14 | 13 | 12 | 11 | 10 | 9 | |
| (15) | (14) | (13) | (12) | (11) | (10) | (9) | |
| 16 | 17 | 18 | 19 | 20 | 21 | 22 | |
| (16) | | (17) | (18) | (19) | (20) | (21) | |
| 34.21 | 40 | 40 | 40 | 40 | 40 | 40 | 40 |

Edmund Ave

| | | | | | | | | | | | | | | | | |
|----------|------|------|------|------|------|------|------|------|------|------|------|------|------|------|-------|------|
| 32.74 | 40 | 40 | 40 | 40 | 40 | 40 | 40 | 40 | 40 | 40 | 40 | 40 | 40 | 40 | | |
| 15 | 14 | 13 | 12 | 11 | 10 | 9 | 8 | 7 | 6 | 5 | 4 | 3 | 2 | 1 | | |
| 124.5 | (73) | (72) | (71) | (70) | (69) | (68) | (67) | (66) | (65) | (64) | (63) | (62) | (61) | (60) | (59) | (58) |
| 4 | | | | | | | | | | | | | | | | |
| 15 | 16 | 17 | 18 | 19 | 20 | 21 | 22 | 23 | 24 | 25 | 26 | 27 | 28 | 29 | 30 | |
| 124.5 | (74) | (75) | (76) | (77) | (78) | (79) | (80) | (81) | (82) | (83) | (84) | (85) | (86) | (87) | (+90) | (88) |
| 32.81 | 40 | 40 | 40 | 40 | 40 | 40 | 40 | 40 | 40 | 40 | 40 | 40 | 40 | 40 | 40 | 40 |

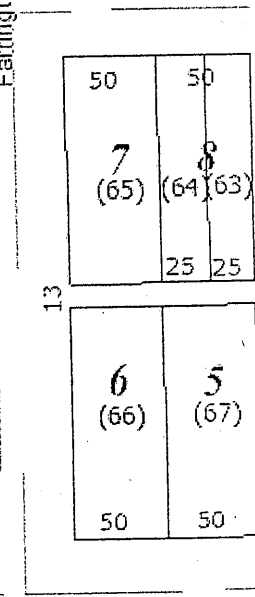
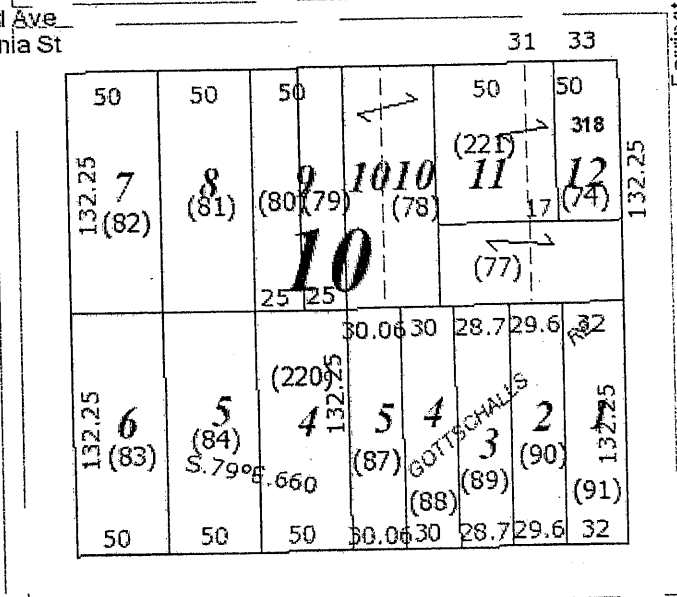
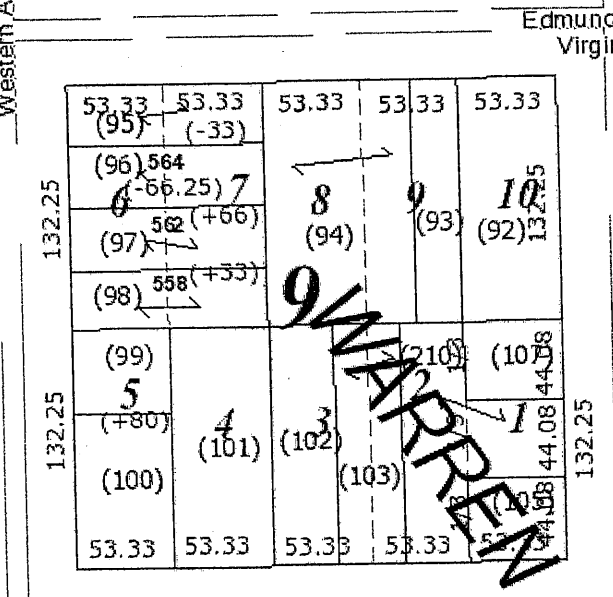
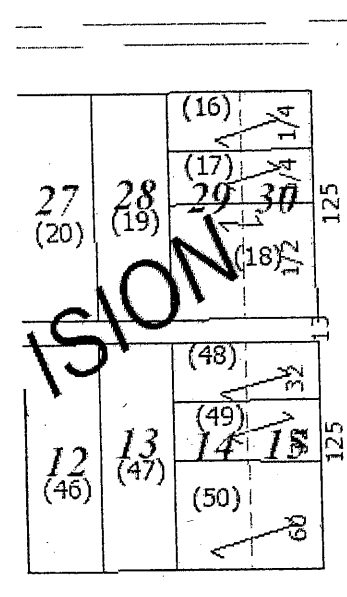
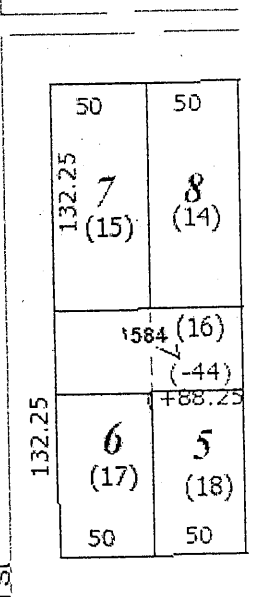
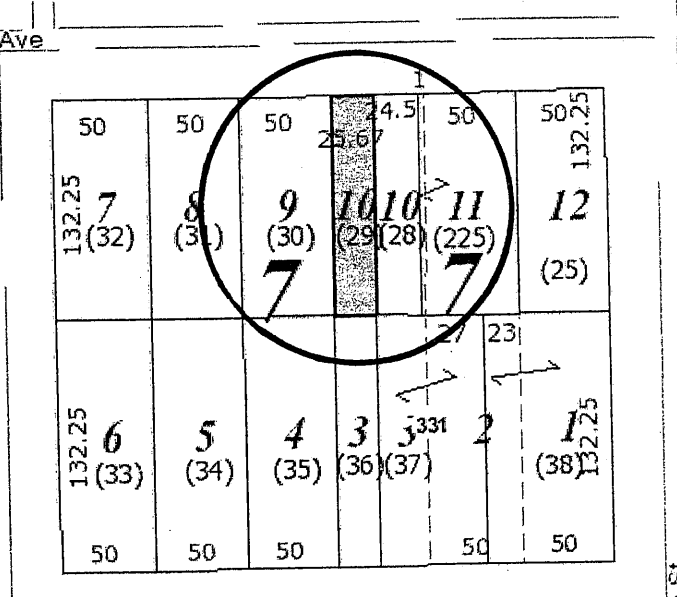
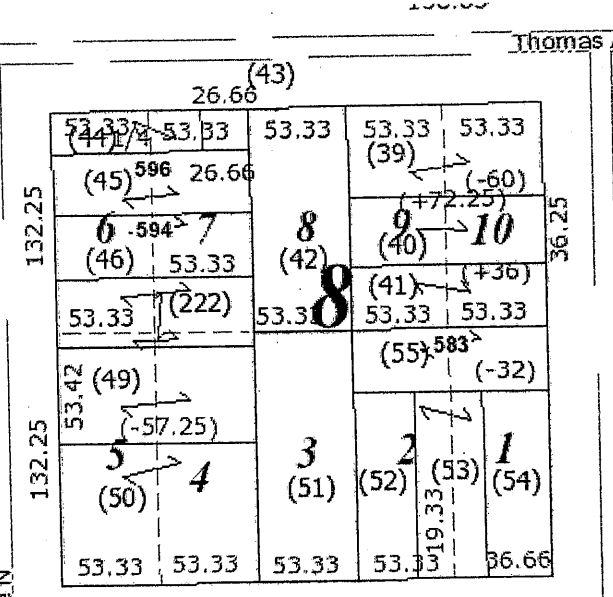
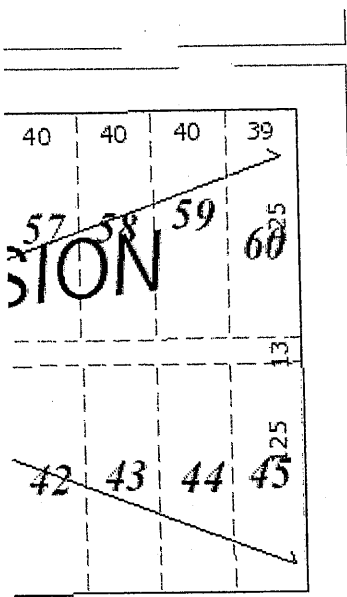
Avon St N

| | | | | | | | | | | | | | | | | |
|-------------------|-------|-------|-------|-------|-------|-------|-------|------|----|----|----|----|----|----|----|----|
| 25.74 | 30 | 30 | 30 | 30 | 30 | 30 | 30 | 30 | 30 | 30 | 30 | 30 | 30 | 30 | 30 | 30 |
| 20 | 19 | 18 | 17 | 16 | 15 | 14 | 13 | 12 | | | | | | | | |
| 124.45 | (105) | (104) | (103) | (102) | (101) | (99) | (98) | (97) | | | | | | | | |
| JOS. R. SY | | | | | | | | | | | | | | | | |
| 15 | 16 | 17 | 18 | 19 | 20 | 21 | 22 | | | | | | | | | |
| 124.45 | (106) | (243) | (244) | (242) | (241) | (111) | (112) | | | | | | | | | |
| 35.82 | 40 | 40 | 40 | 40 | 40 | 40 | 40 | 40 | 40 | 40 | 40 | 40 | 40 | 40 | 40 | 40 |
| 76 | | | | | | | | | | | | | | | | |

Charles Ave

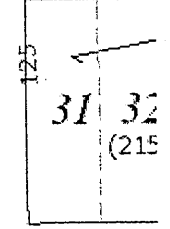
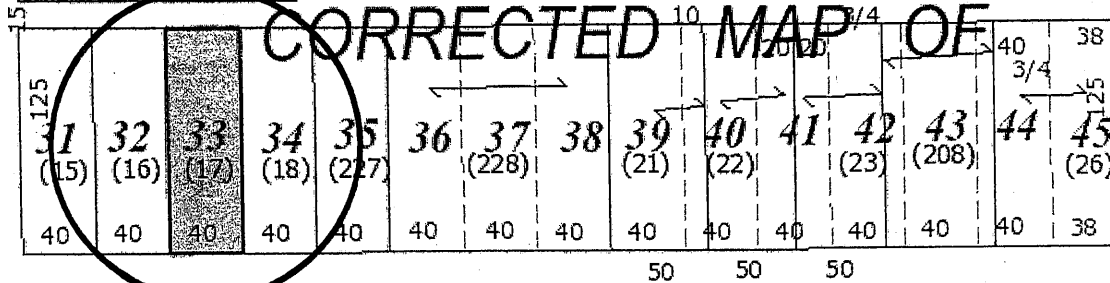
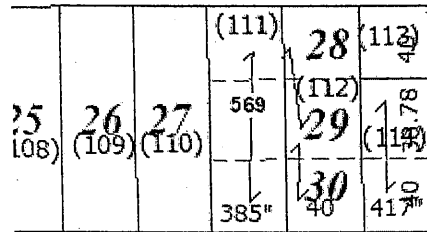
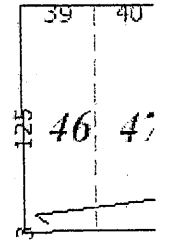
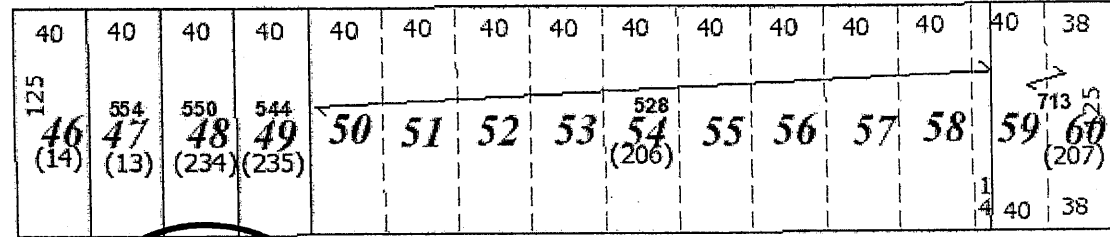
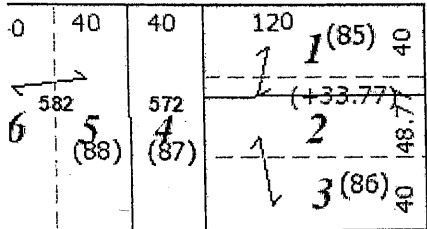


CD 3 36-29-23-13-0029 Between 330-336 Thomas Avenue
(332 Thomas Avenue)

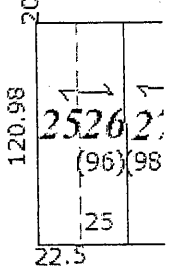
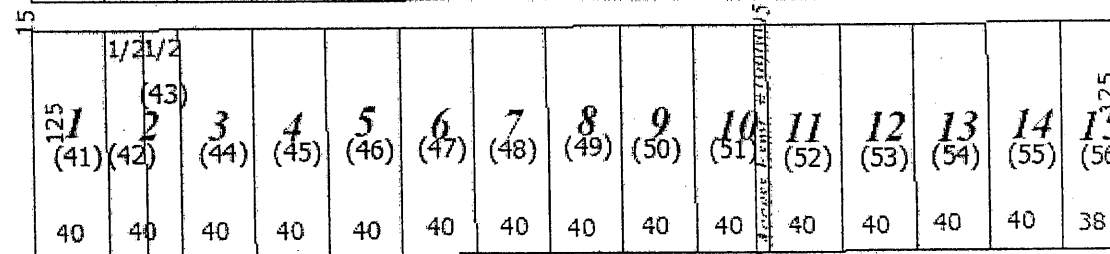
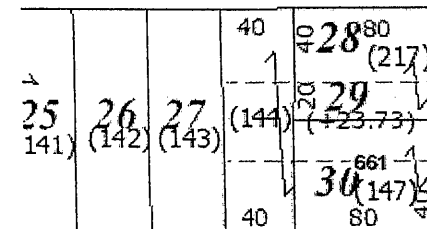
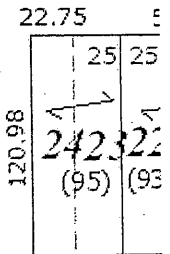
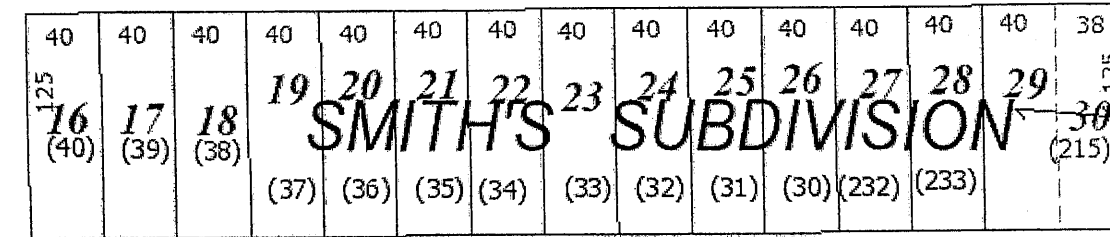
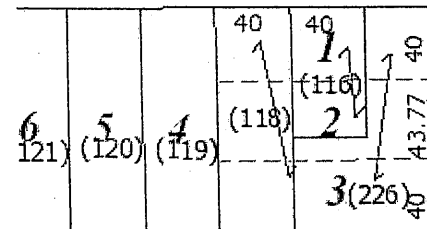


Charles Ave
50.5 49.5

33 Minnehaha Ave W



3 Van Buren Ave



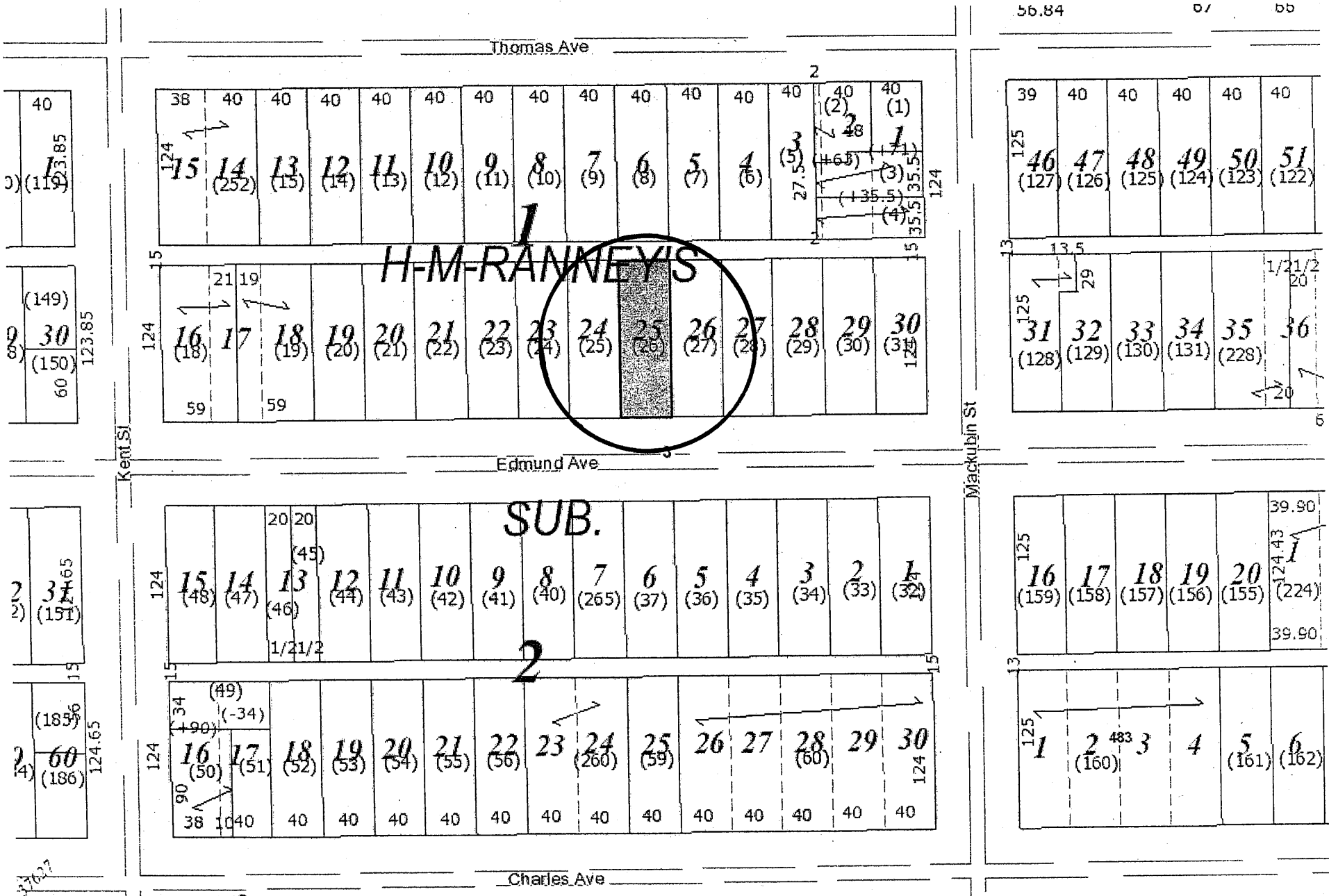
Blait Ave

60 59

44.44



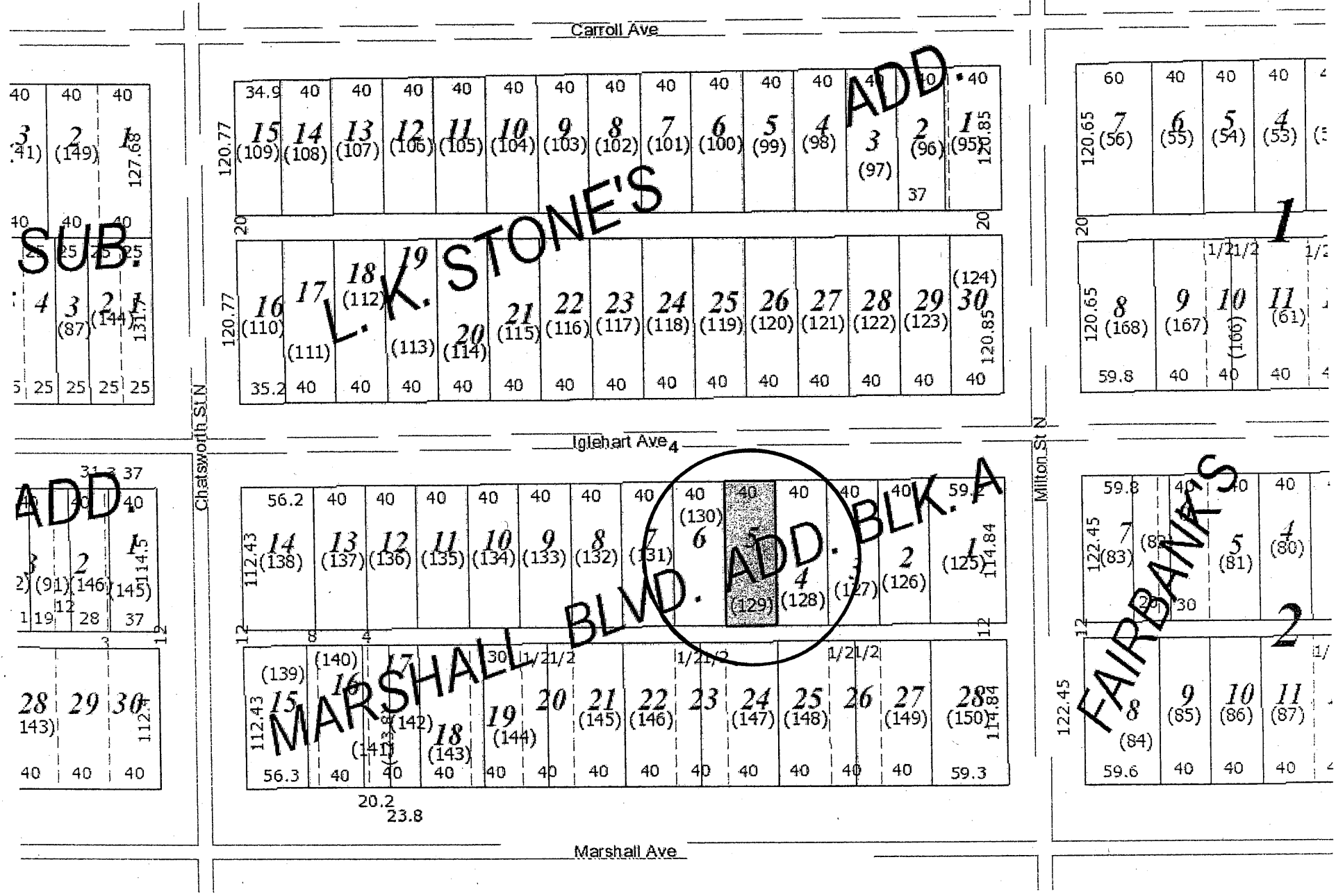
CD 3 36-29-23-23-0026 Between 519-527 Edmund Avenue
(521 Edmund Avenue)



37627

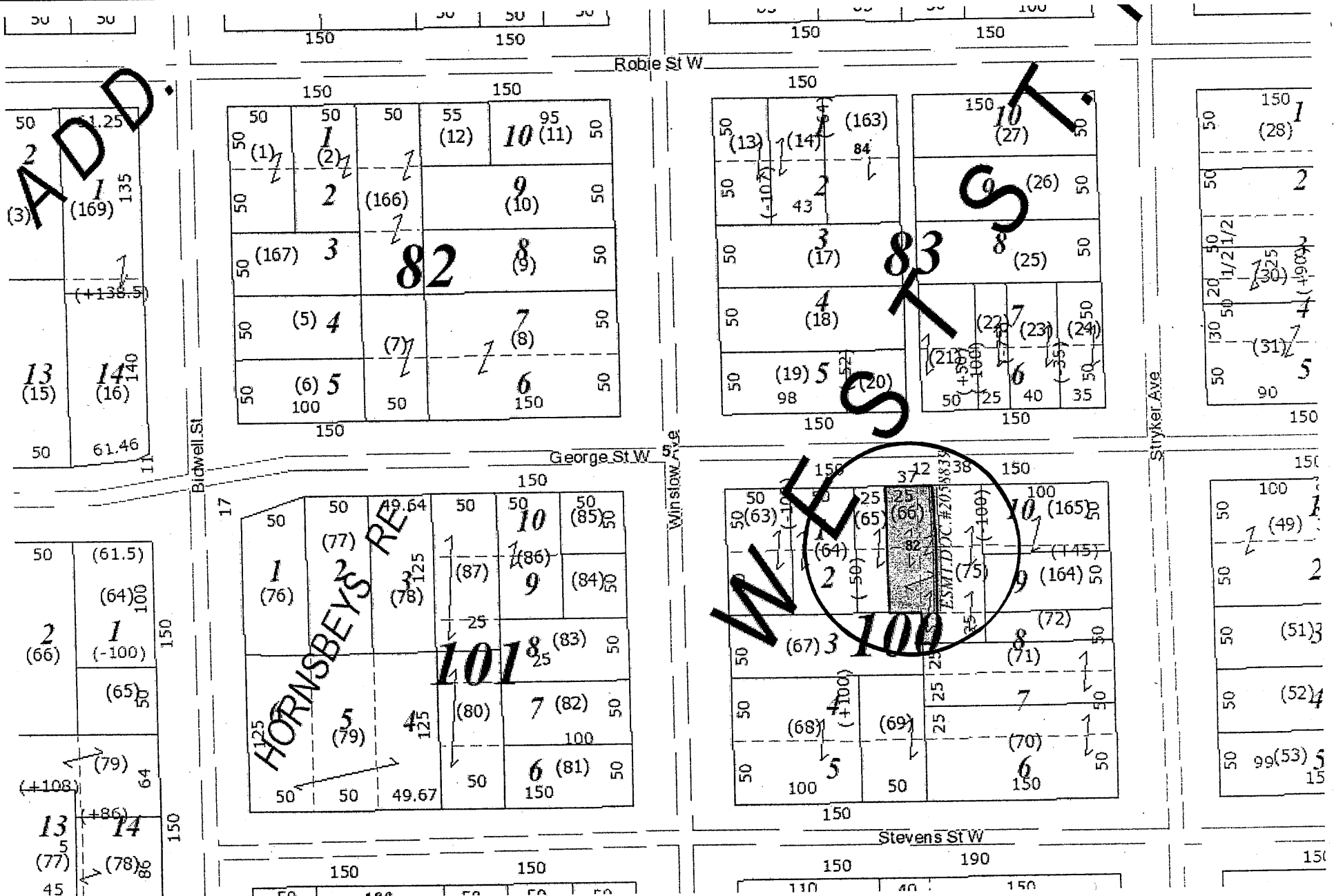


CD 4 35-29-23-34-0129 Between 936-944 Iglehart Avenue
(940 Iglehart Avenue)





CD 5 07-28-22-14-0066 Between 78-84 George Street W
(82 George Street W)

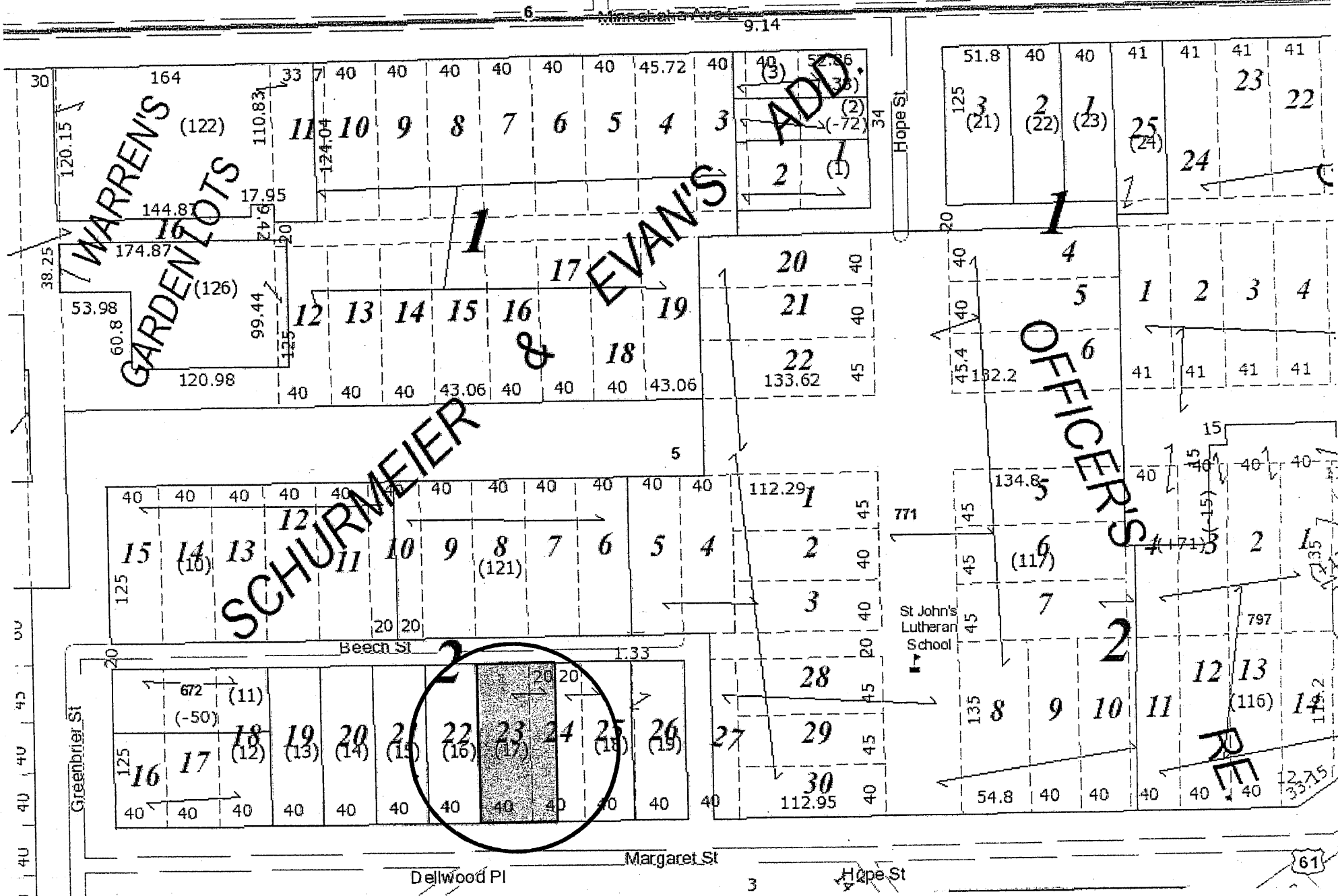


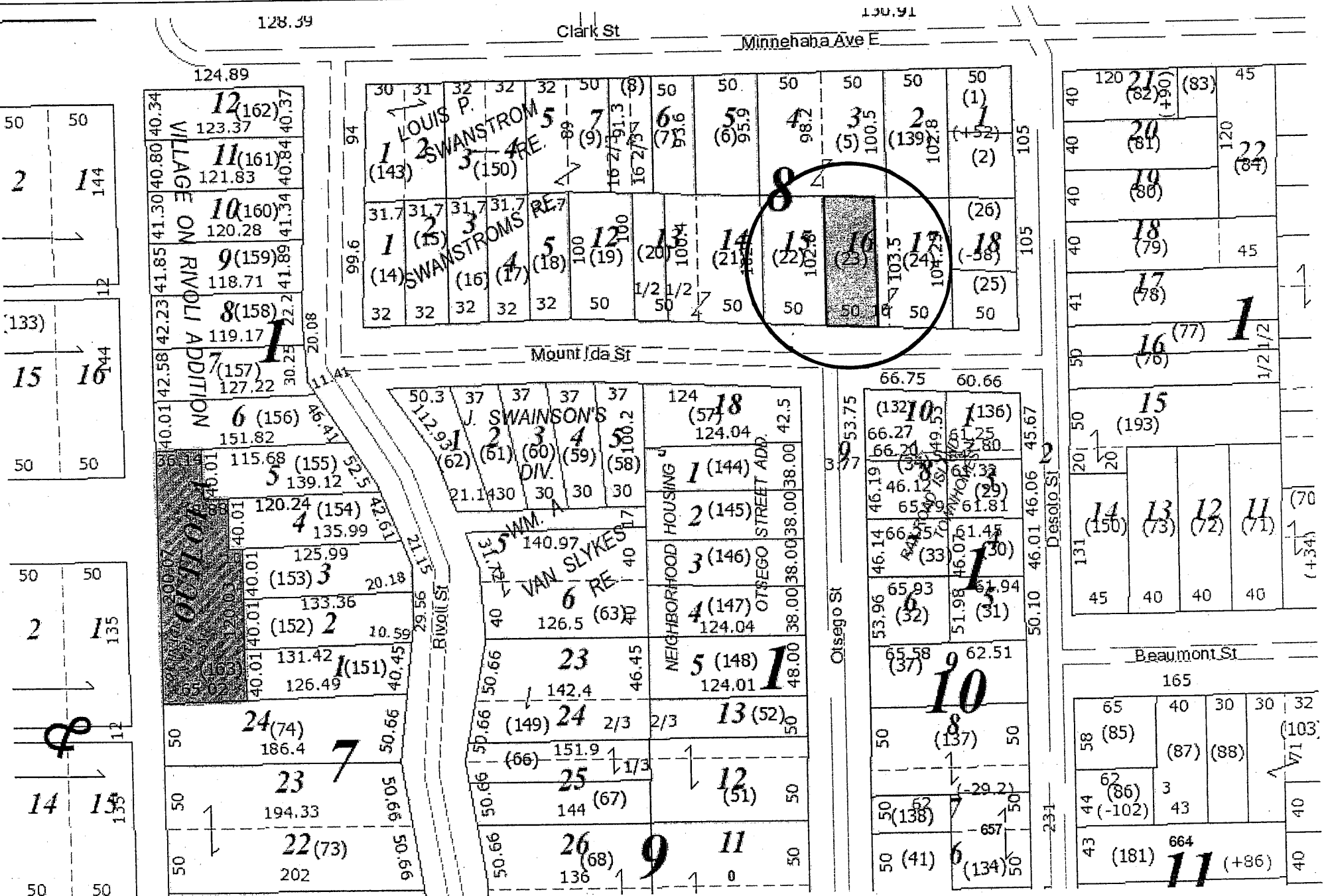


CD 5 07-28-22-32-0059 Between 663-671 Smith Avenue S
(667 Smith Avenue S)



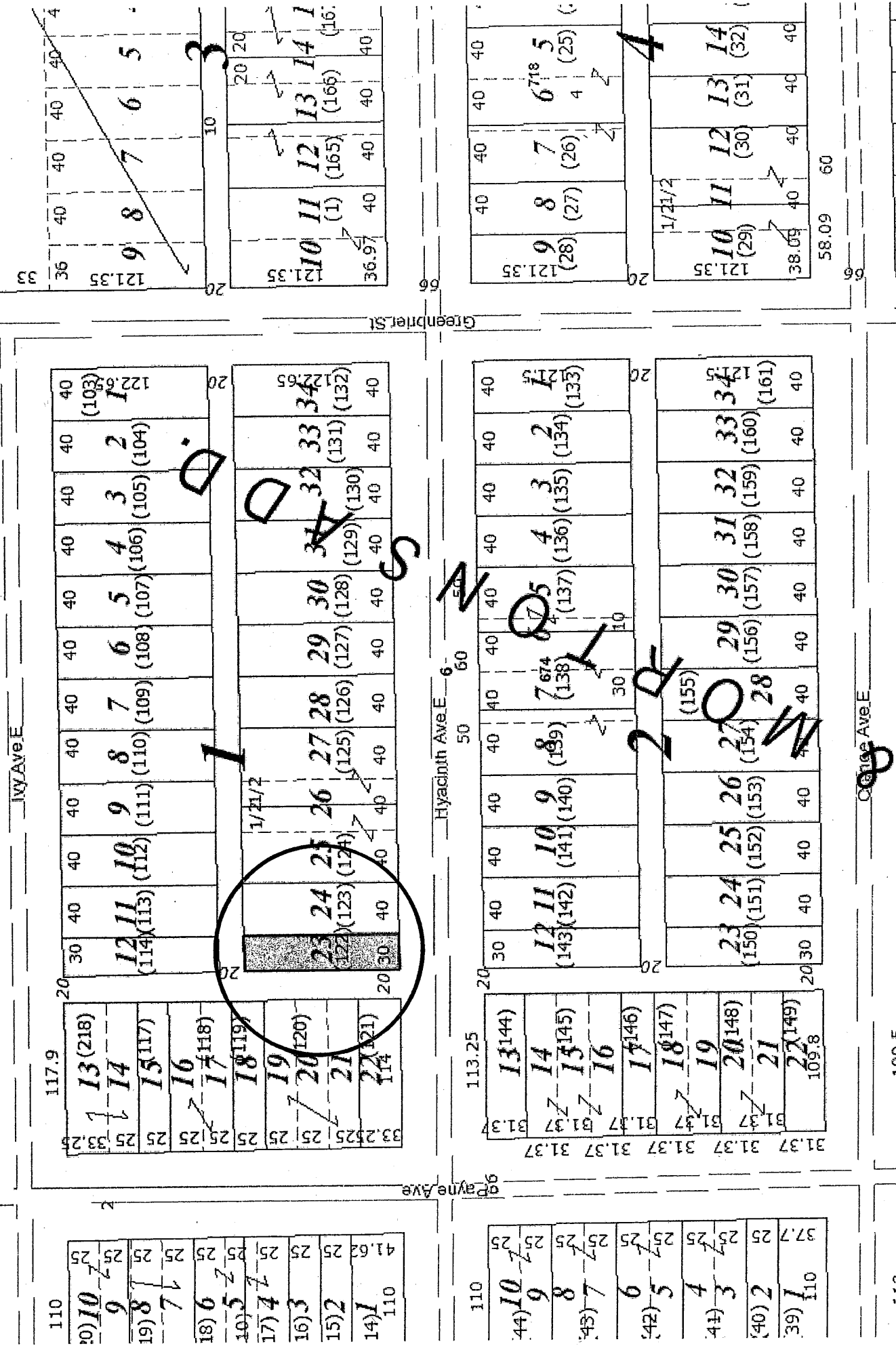


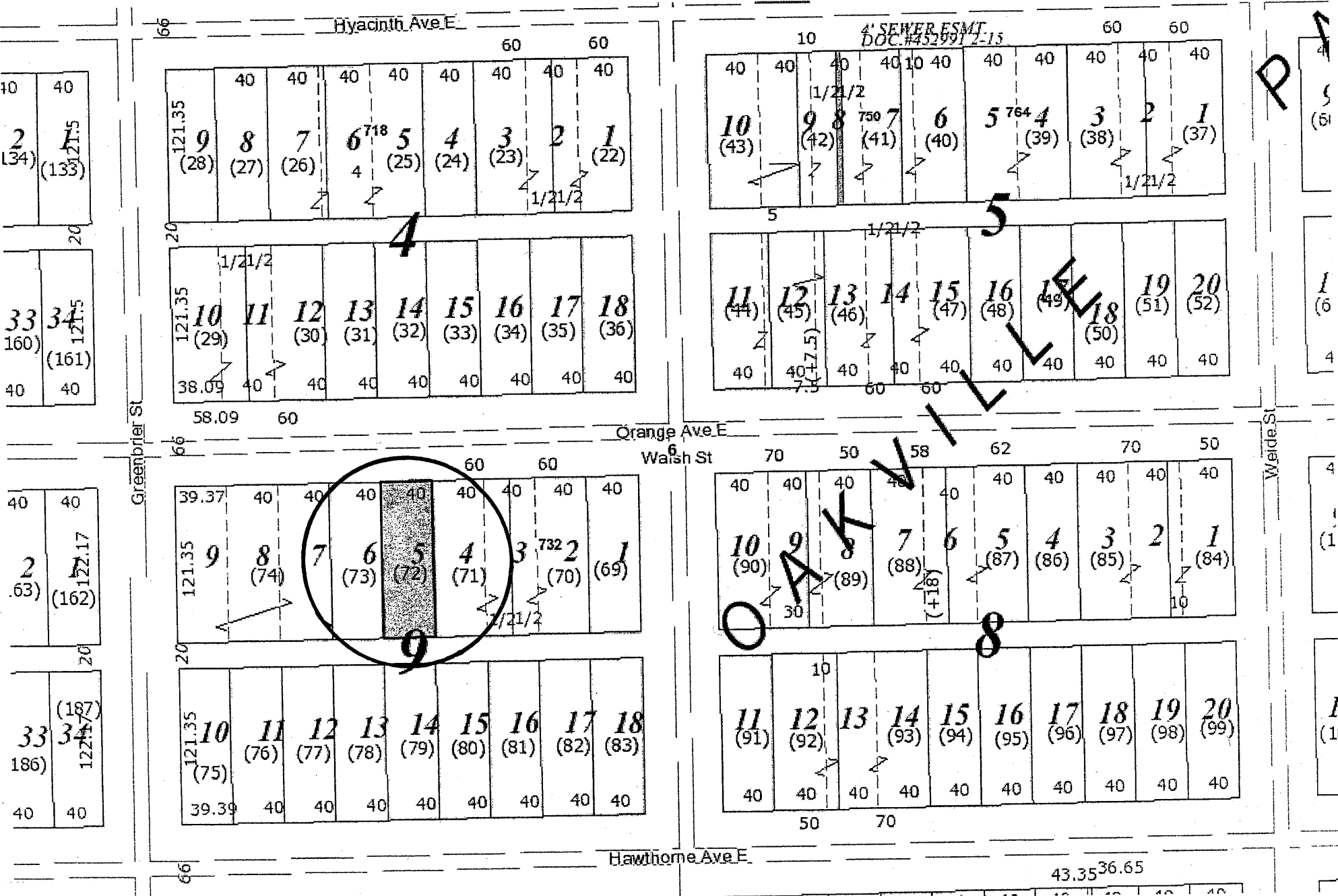




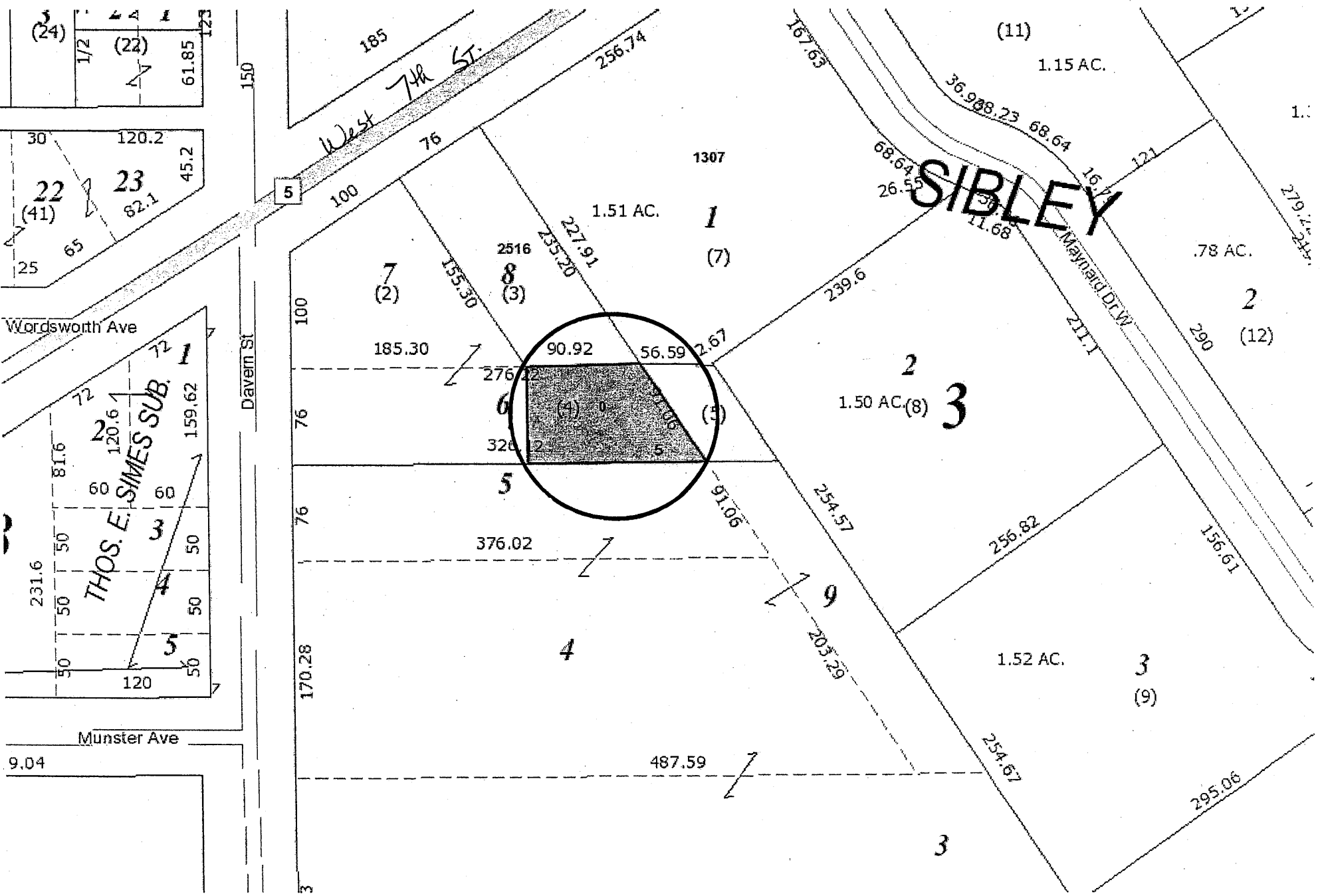


CD 6 20-29-22-43-0122 West of 657 Hyacinth Avenue E
(653 Hyacinth Avenue E)





CD 5 21-28-23-14-0004 Behind 2516-2526 7th Street W
(7th Street W & Davern Street)



Hoyt Ave E

Nebraska Ave E

McAfee St

Clayton St

Etna St

Birmingham St

| | | | |
|------|----|---------|---------|
| 120 | 1 | 120 | 39(157) |
| (81) | 2 | (17.1) | 38 |
| (82) | 3 | (-15) | 37(158) |
| | 4 | 10.1 | 36(154) |
| | 5 | 13 | 35(155) |
| | 6 | 10 | 34 |
| (85) | 7 | 7.15 | 33(146) |
| (86) | 8 | 8 | 32(145) |
| (87) | 9 | | 31 |
| (88) | 10 | (159) | 30 |
| (89) | 11 | (+3.4) | 29 |
| (90) | 12 | (+11.6) | 28 |
| (91) | 13 | (100) | 27 |
| (92) | 14 | | 26 |
| (93) | 15 | (+16.6) | 25 |
| (94) | 16 | | 24(99) |
| | 17 | (98) | 23 |
| | 18 | | 22 |
| | 19 | (97) | 21 |
| | 20 | | 20 |
| | 21 | (96) | 19 |
| | 22 | | 18 |
| | 23 | (95) | 17 |
| 120 | 24 | | 16 |

| | | | |
|------|-----|-------|--------|
| 1 | 120 | 125 | 48 |
| (39) | 2 | | 47(60) |
| | 3 | | 46 |
| (40) | 4 | | 45(59) |
| | 5 | (-10) | 44 |
| (41) | 6 | | 43(58) |
| | 7 | (-15) | 42 |
| (42) | 8 | | 41 |
| | 9 | (-20) | 40 |
| (43) | 10 | | 39(56) |
| | 11 | | 38 |
| (44) | 12 | 20 | 37(55) |
| | 13 | | 36 |
| (45) | 14 | 5 | 35 |
| | 15 | 20 | 34(54) |
| (46) | 16 | | 33 |
| | 17 | (+20) | 32(53) |
| (47) | 18 | | 31 |
| | 19 | (+15) | 30(52) |
| (48) | 20 | | 29 |
| | 21 | (+10) | 28(51) |
| (49) | 22 | | 27 |
| | 23 | (+5) | 26(50) |
| 120 | 24 | | 25 |

| | | | |
|------|----|---------|-------|
| 125 | 7 | 125 | 39(1) |
| (21) | 8 | | 38 |
| (20) | 9 | | 37(2) |
| | 10 | (+10) | 36 |
| (19) | 11 | | 35 |
| | 12 | (-135) | 34(4) |
| (18) | 13 | | 33 |
| (17) | 14 | | 32 |
| (16) | 15 | | 31(6) |
| (15) | 16 | (+30) | 30 |
| (14) | 17 | (+15) | 29 |
| (13) | 18 | | 28(8) |
| (12) | 19 | (+5) | 27 |
| (11) | 20 | (+12.5) | 26 |
| | 21 | | 25 |

LAKEVIEW

ADD

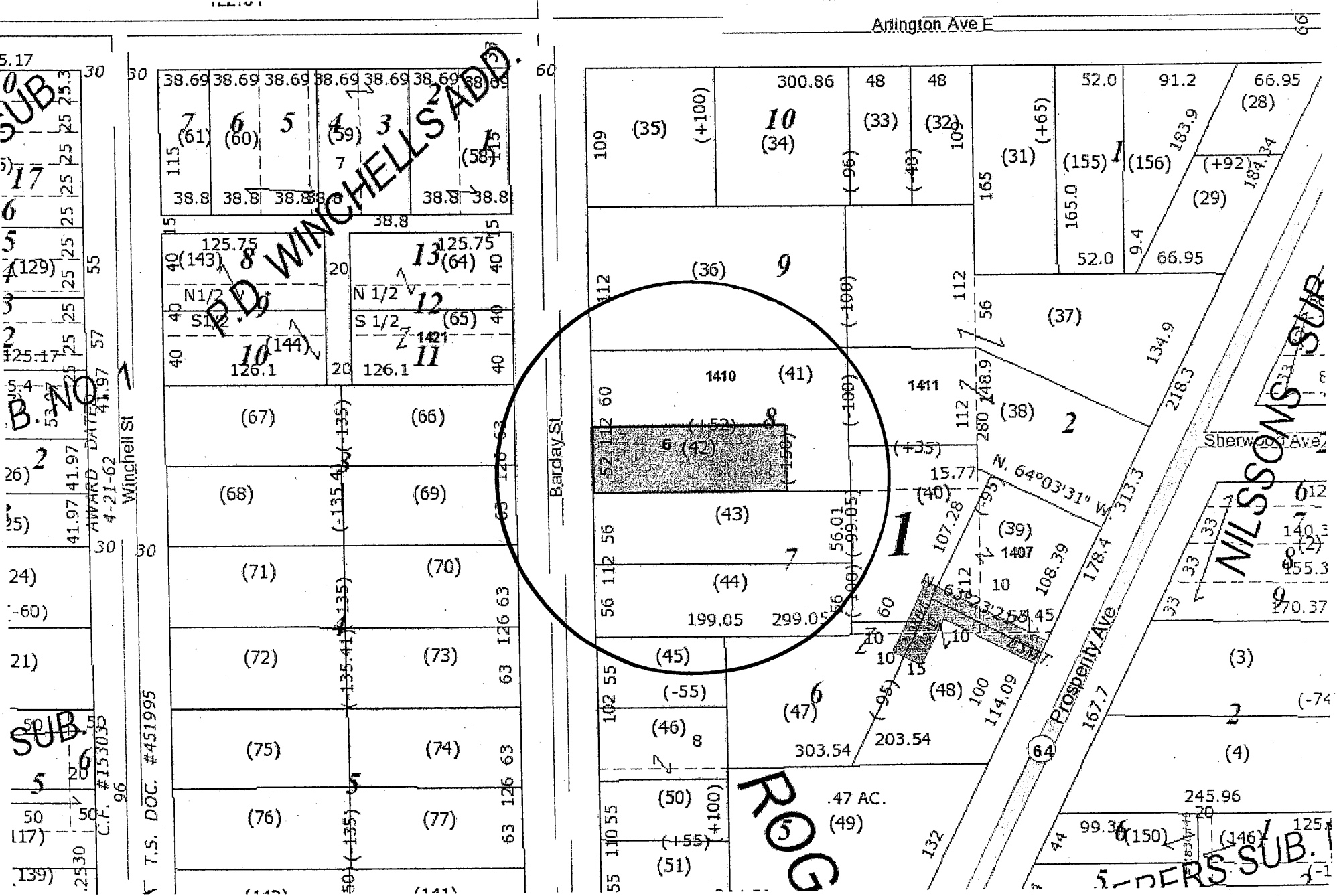
SCHWABE'S

REL NO. 1

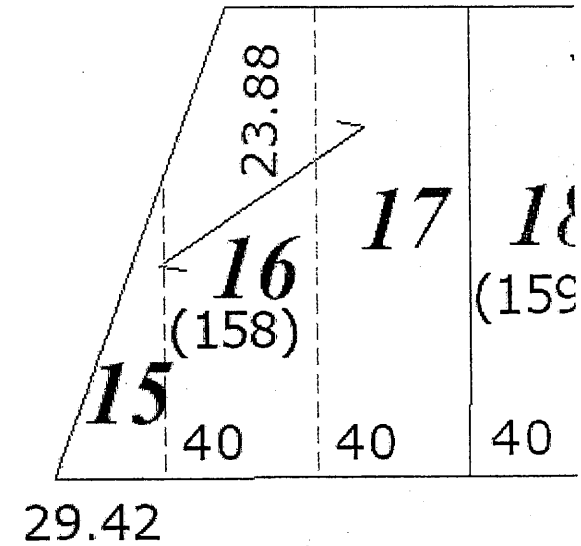
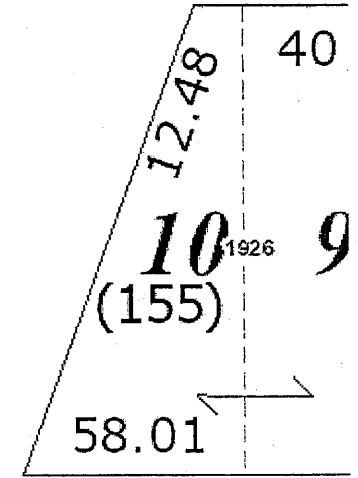
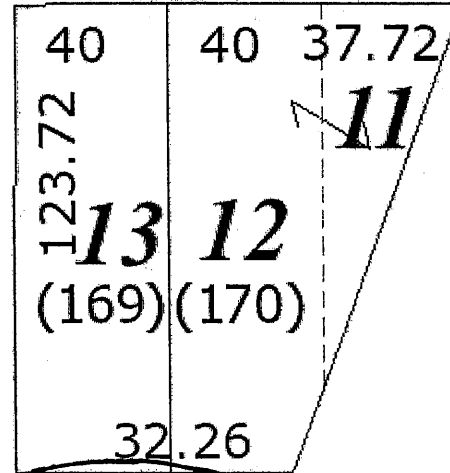
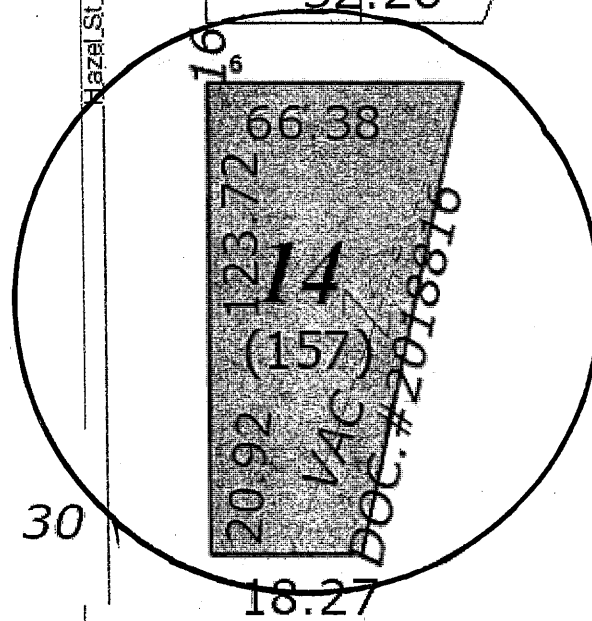
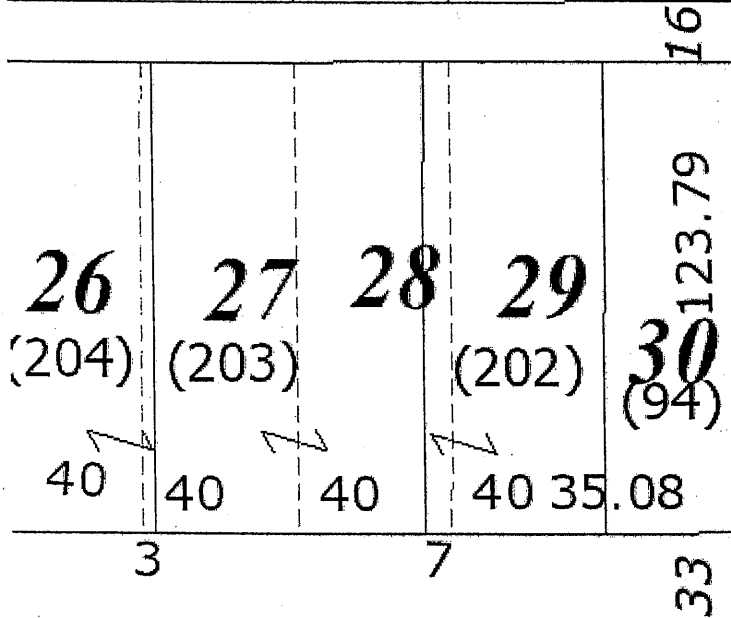
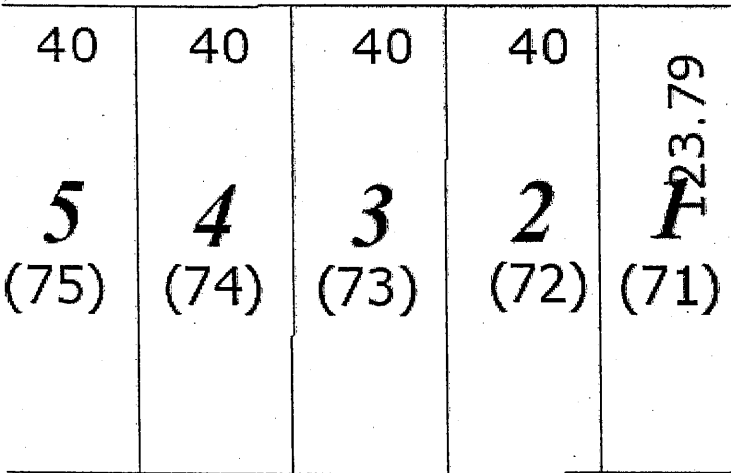
274

330 57

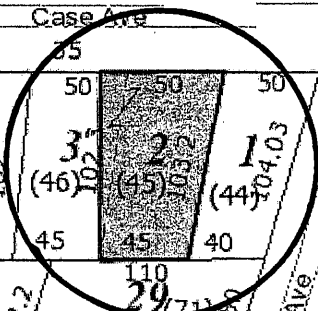
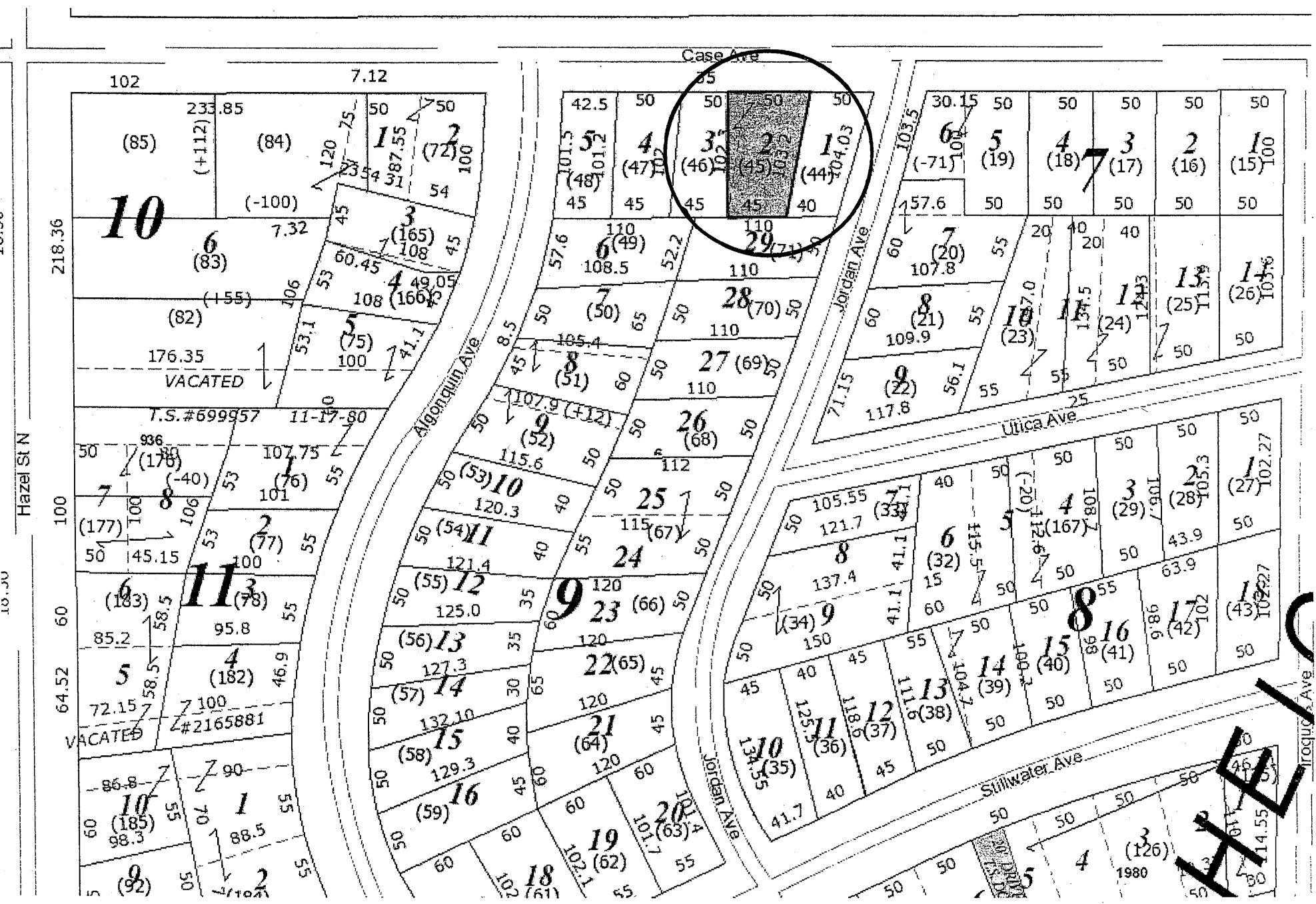
330 57



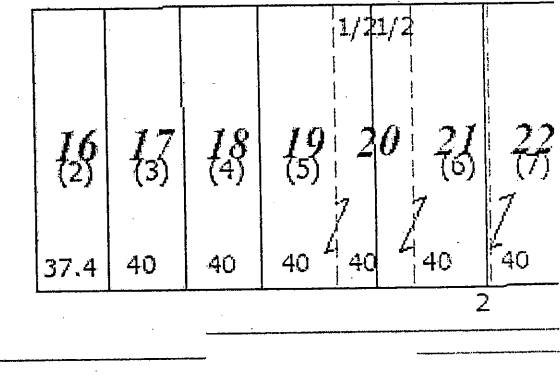
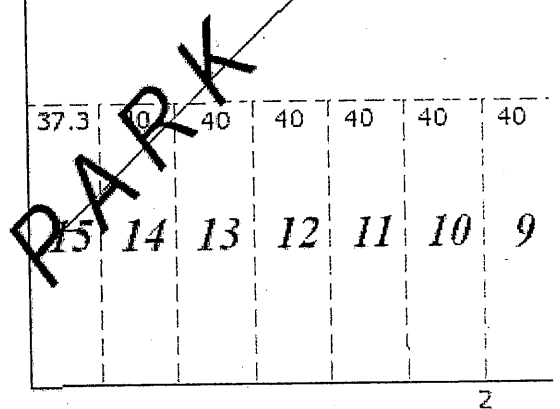
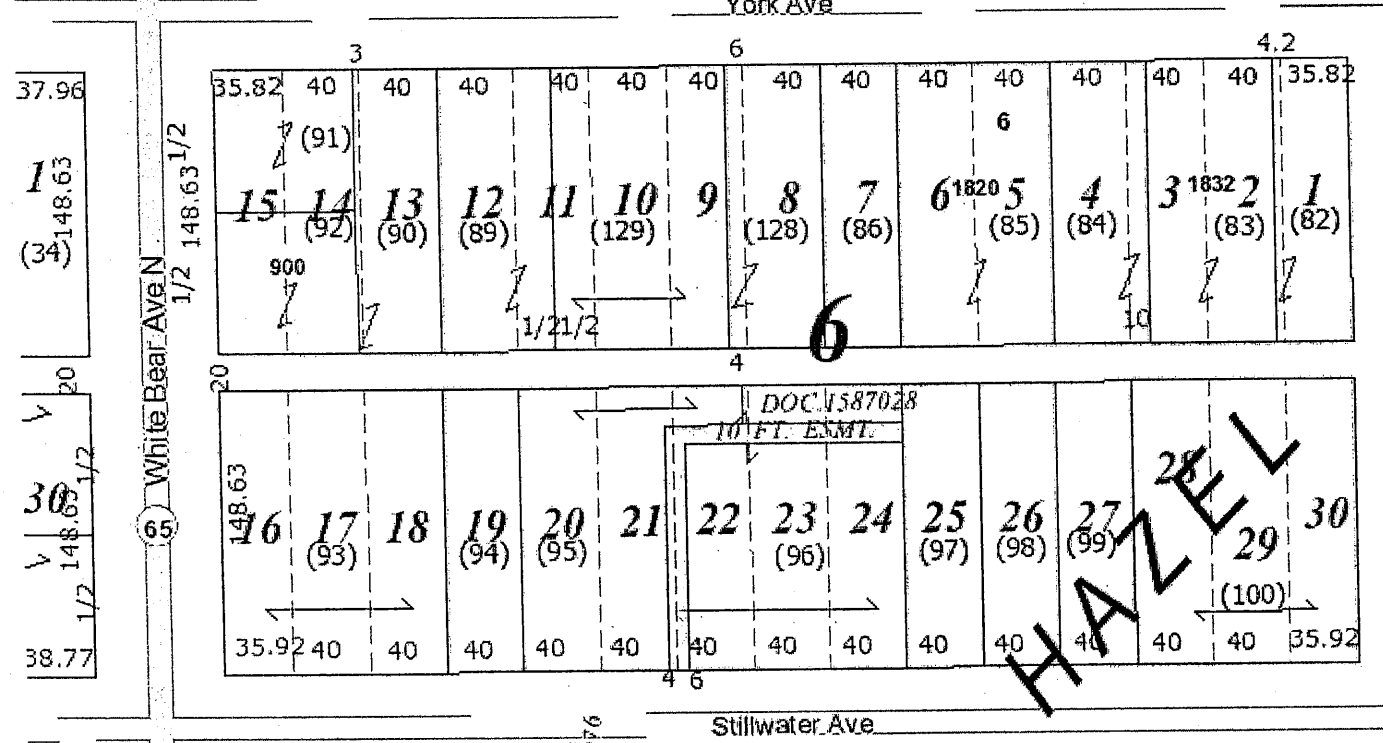
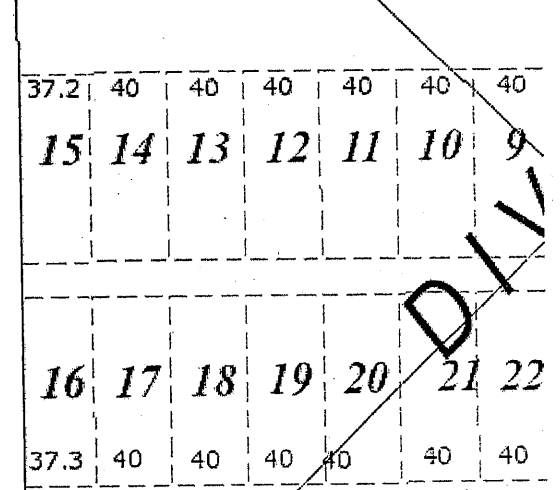
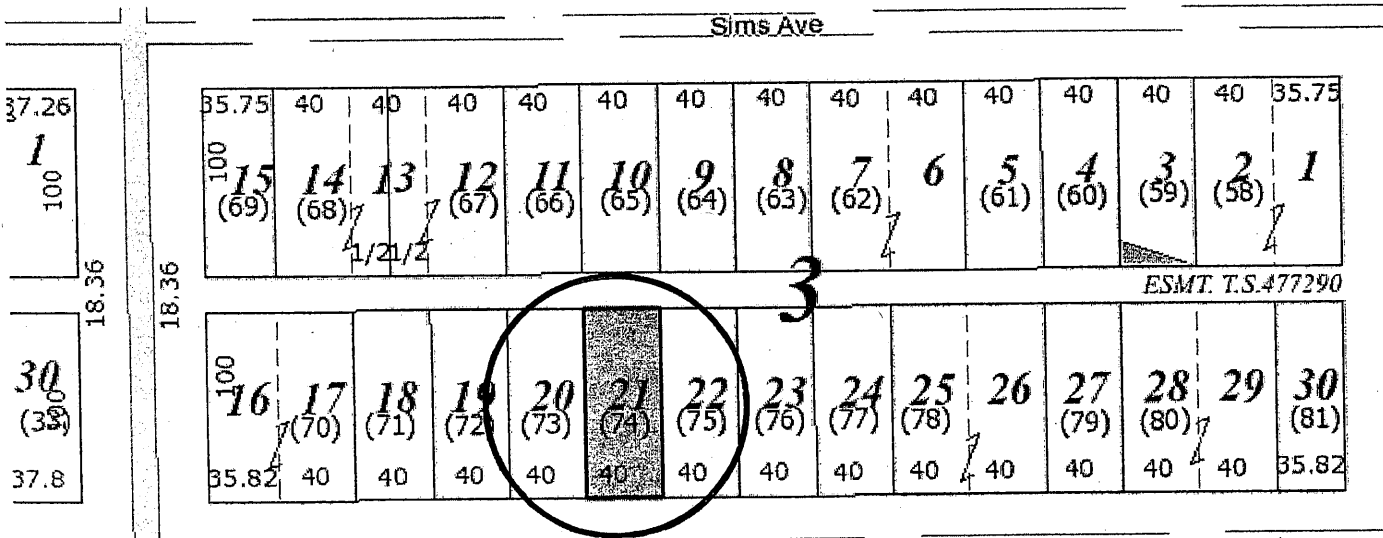
Hawthorne Ave E #634746



Maryland Ave E

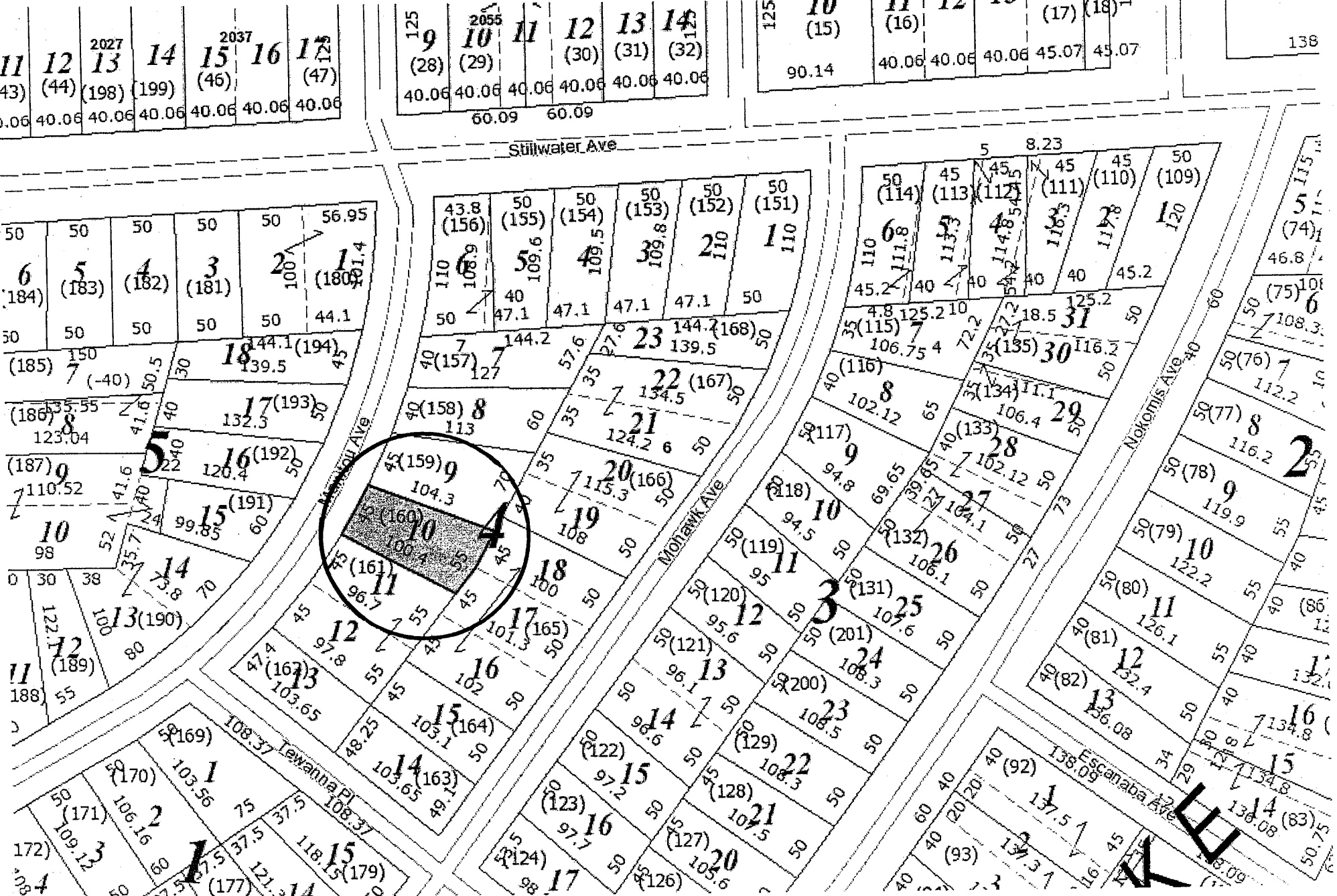


HELIX



PARK DIVISION

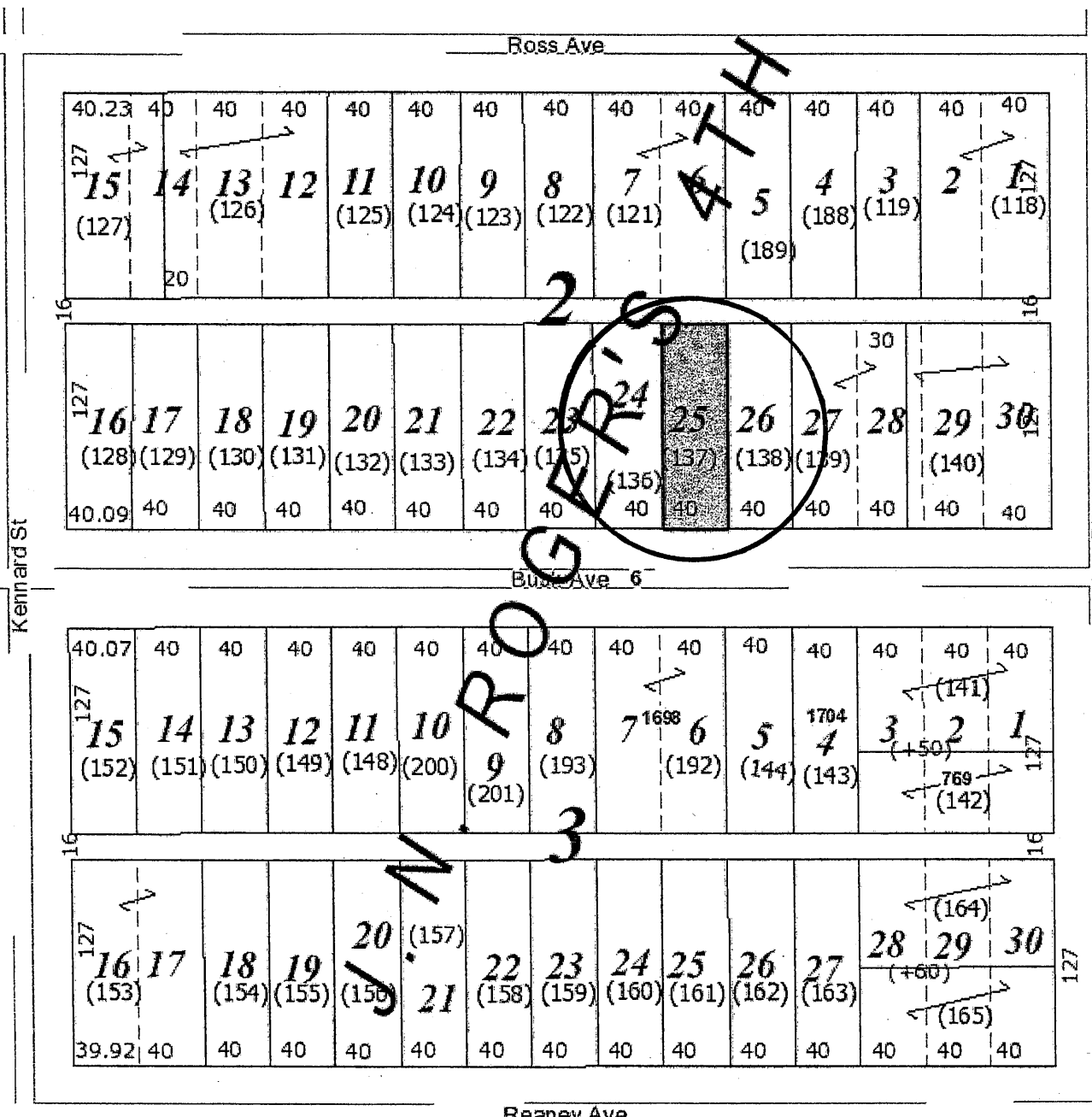
HANZELL



W. ROGER'S

9.28 40 40
3 2 1
(51) (196) (127)
3 (195)
79.75

1184
5
3 2 1
(73) (74) (75)
40 40 39.75



40 40 40 40

15 14 13 12 11
(35) (34) (33) (32) (31)

39

25 1/21/2

16 17 18 19 20
(36) (37) (38)

40 40 40 40

40 40 40 40

15 14 13 12 11
(58) (57) (56) (55)

16 17 18 19 20
(59) (60) (61) (62)

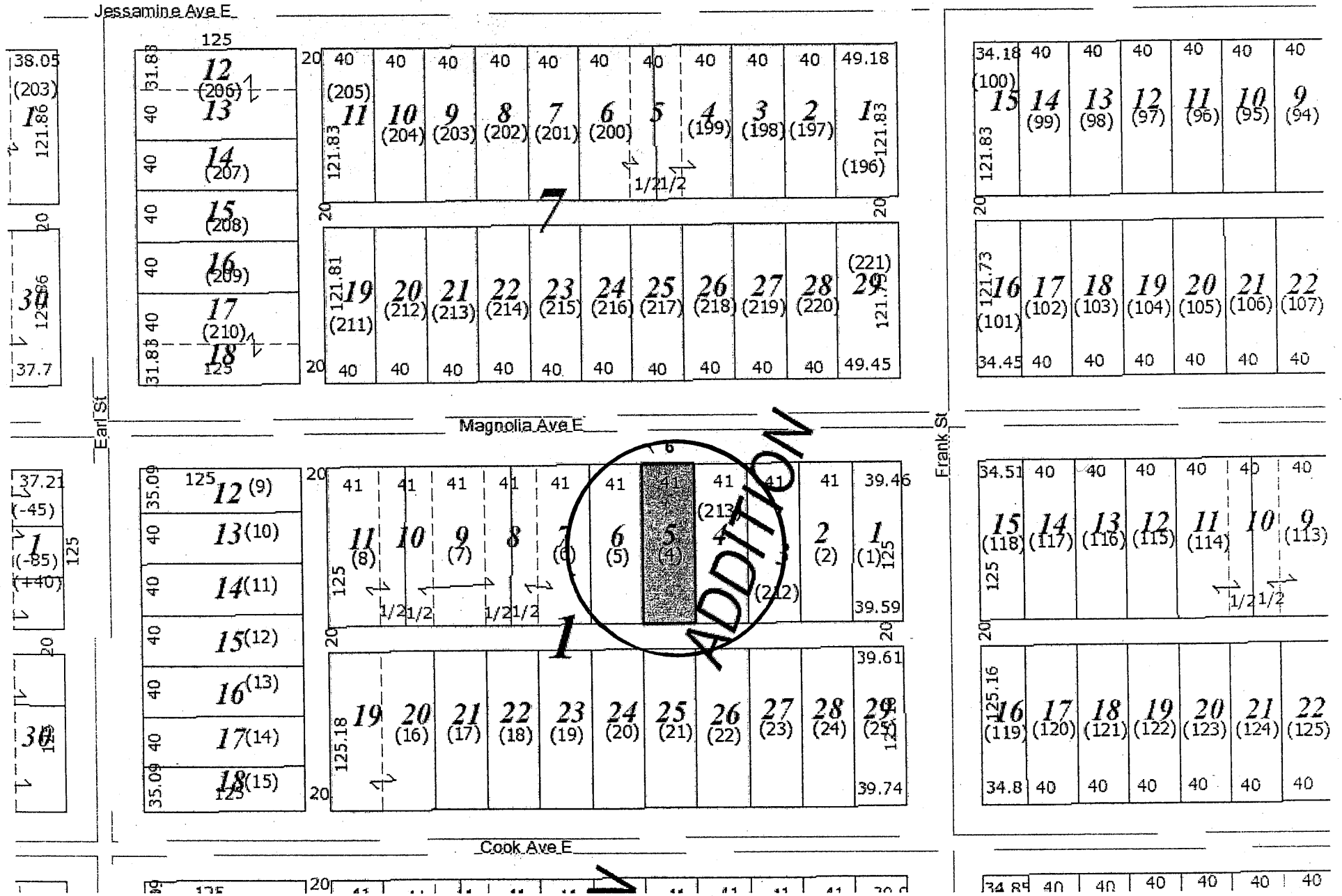
40 40 40 40

W. ROGER'S

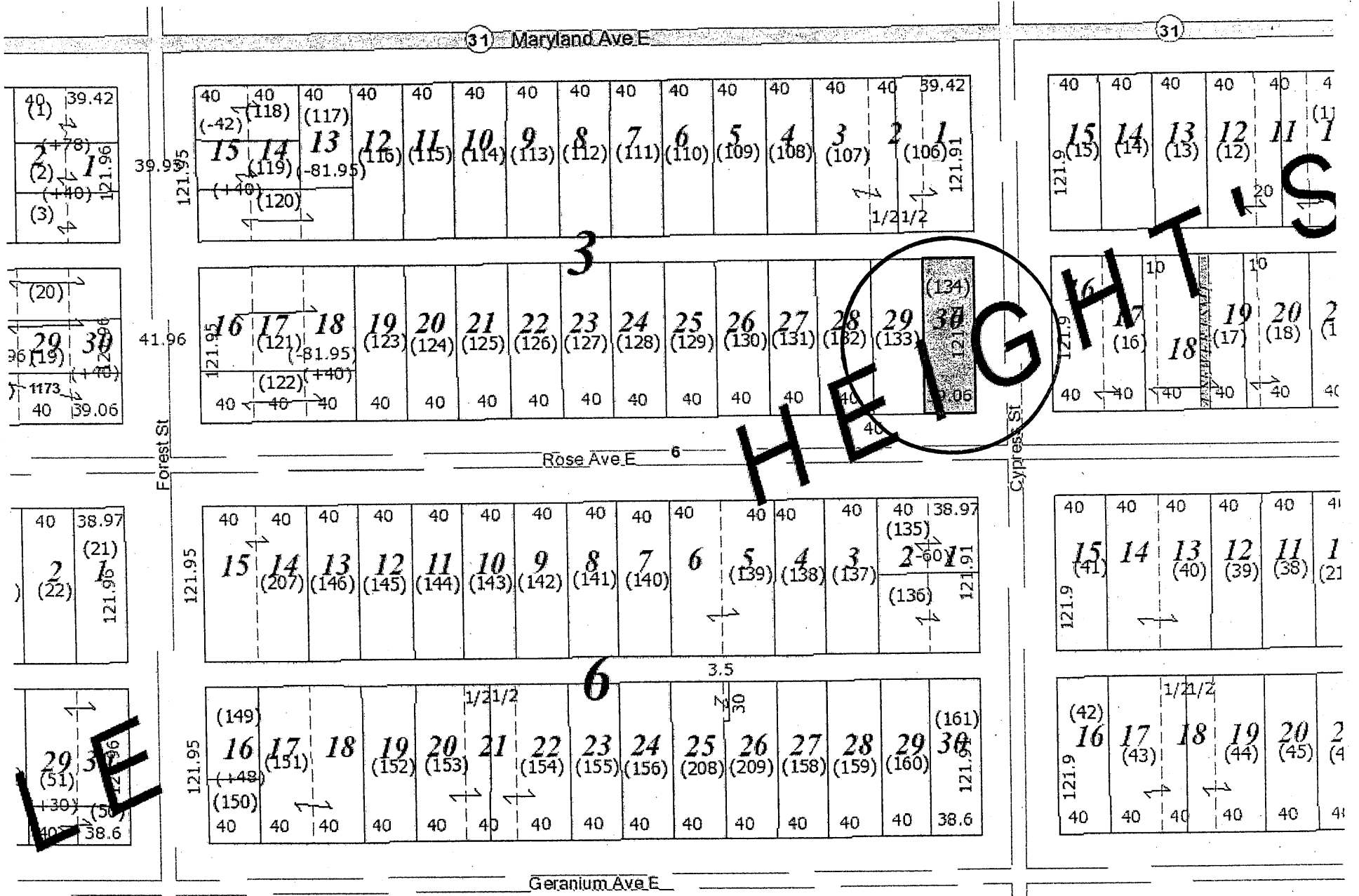
KULL

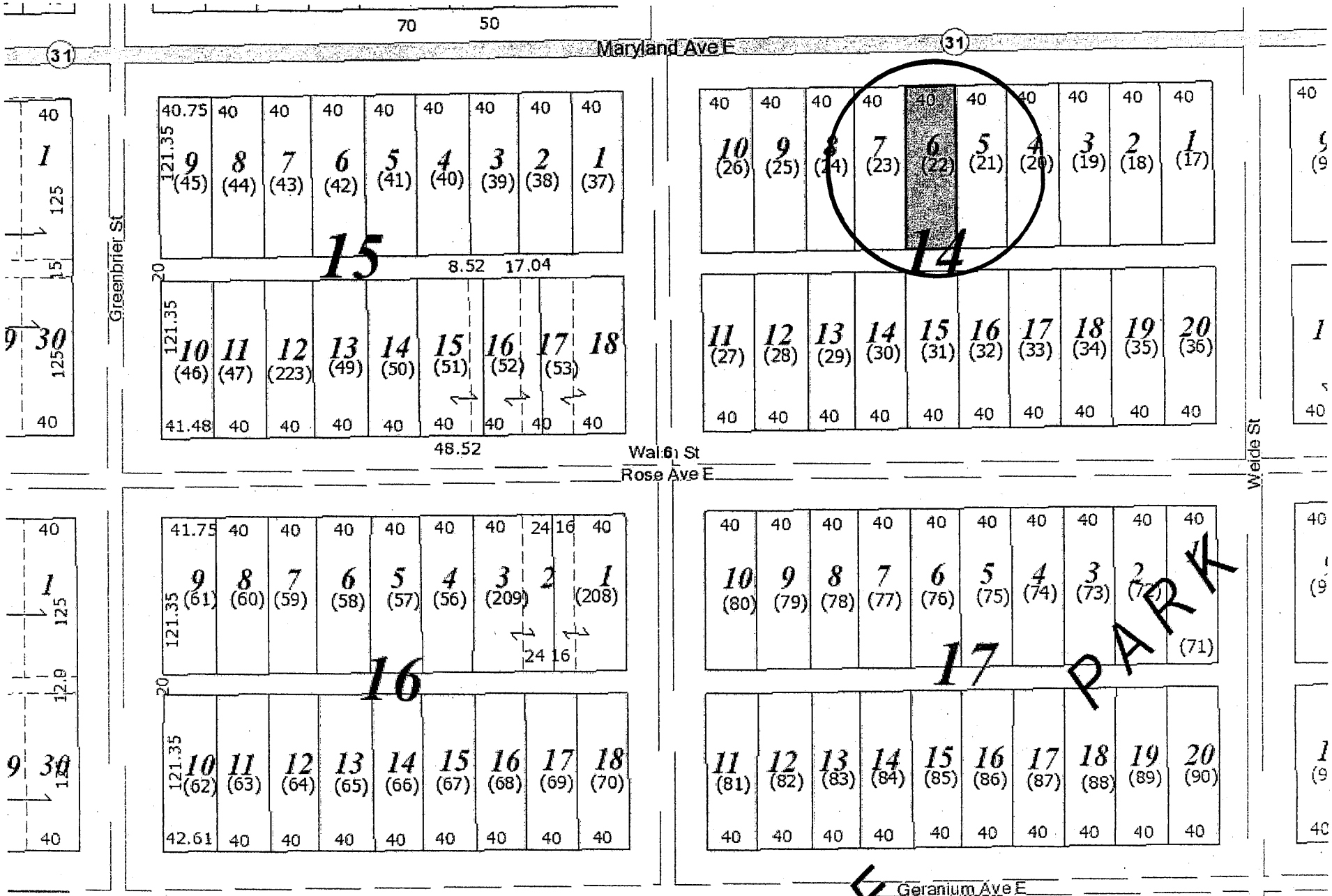


CD 6 28-29-22-13-0004 Between 1096-1104 Magnolia Avenue E
(1100 Magnolia Avenue E)



ADDITION





Jessamine Ave E

| | | | | | | | | | | |
|-----------|-------|-------|-------|-------|-------|-------|-------|-------|-------|----|
| 40 | 40 | 40 | 40 | 40 | 40 | 40 | 40 | 40 | 40 | 40 |
| 10 | 9 | 8 | 7 | 6 | 5 | 4 | 3 | 2 | 1 | |
| (180) | (179) | (178) | (177) | (176) | (175) | (174) | (173) | (172) | (171) | |
| 23 | | | | | | | | | | |
| 40 | 40 | 40 | 40 | 40 | 40 | 40 | 40 | 40 | 40 | 40 |
| 11 | 12 | 13 | 14 | 15 | 16 | 17 | 18 | 19 | 20 | |
| (181) | (182) | (183) | (184) | (185) | (186) | (187) | (188) | (189) | | |

| | | | | | | | | | | |
|-----------|-------|-------|-------|-------|-------|-------|-------|----|----|----|
| 40 | 40 | 40 | 40 | 40 | 40 | 40 | 40 | 40 | 40 | 40 |
| 9 | 8 | 7 | 6 | 5 | 4 | 3 | 2 | 1 | | |
| (198) | (197) | (196) | (195) | (194) | (193) | (192) | (191) | | | |
| 24 | | | | | | | | | | |
| 40 | 40 | 40 | 40 | 40 | 40 | 40 | 40 | 40 | 40 | 40 |
| 10 | 11 | 12 | 13 | 14 | 15 | 16 | 17 | 18 | | |
| (199) | (200) | (201) | (202) | (203) | (204) | (205) | (206) | | | |

| | | | | | | | | | | |
|-----------|-------|-------|-------|-------|-------|-------|-------|-------|-------|-------|
| 40 | 40 | 40 | 40 | 40 | 40 | 40 | 40 | 40 | 40 | 40 |
| 15 | 14 | 13 | 12 | 11 | 10 | 9 | 8 | 7 | 6 | 5 |
| (174) | (175) | | | | | | | | | |
| 25 | | | | | | | | | | |
| 40 | 40 | 40 | 40 | 40 | 40 | 40 | 40 | 40 | 40 | 40 |
| 16 | 17 | 18 | 19 | 20 | 21 | 22 | 23 | 24 | 25 | 26 |
| (176) | (177) | (178) | (179) | (180) | (181) | (182) | (183) | (184) | (185) | (186) |

Walsh St

| | | | | | | | | | | |
|-----------|------|------|------|------|------|------|------|------|------|----|
| 40 | 40 | 40 | 40 | 40 | 40 | 40 | 40 | 40 | 40 | 40 |
| 10 | 9 | 8 | 7 | 6 | 5 | 4 | 3 | 2 | 1 | |
| (24) | (23) | (22) | (21) | (20) | (19) | (18) | (17) | (16) | (15) | |
| 26 | | | | | | | | | | |
| 40 | 40 | 40 | 40 | 40 | 40 | 40 | 40 | 40 | 40 | 40 |
| 11 | 12 | 13 | 14 | 15 | 16 | 17 | 18 | 19 | 20 | |
| (25) | (26) | (27) | (28) | (29) | (30) | (31) | (32) | (33) | | |

| | | | | | | | | | | |
|-----------|-----|-----|-----|------|------|------|------|------|----|----|
| 40 | 40 | 40 | 40 | 40 | 40 | 40 | 40 | 40 | 40 | 40 |
| 9 | 8 | 7 | 6 | 5 | 4 | 3 | 2 | 1 | | |
| (5) | (4) | (3) | (2) | (1) | | | | | | |
| 27 | | | | | | | | | | |
| 40 | 40 | 40 | 40 | 40 | 40 | 40 | 40 | 40 | 40 | 40 |
| 10 | 11 | 12 | 13 | 14 | 15 | 16 | 17 | 18 | | |
| (6) | (7) | (8) | (9) | (10) | (11) | (12) | (13) | (14) | | |

| | | | | | | | | | | |
|-----------|-------|-------|-------|-------|-------|-------|-------|-------|-------|-------|
| 37.48 | 40 | 40 | 40 | 40 | 40 | 40 | 40 | 40 | 40 | 40 |
| 15 | 14 | 13 | 12 | 11 | 10 | 9 | 8 | 7 | 6 | 5 |
| (115) | (114) | | | | | | | | | |
| 28 | | | | | | | | | | |
| 40 | 40 | 40 | 40 | 40 | 40 | 40 | 40 | 40 | 40 | 40 |
| 16 | 17 | 18 | 19 | 20 | 21 | 22 | 23 | 24 | 25 | 26 |
| (116) | (117) | (118) | (119) | (120) | (121) | (122) | (123) | (124) | (125) | (126) |

Magnolia Ave E
Walde St

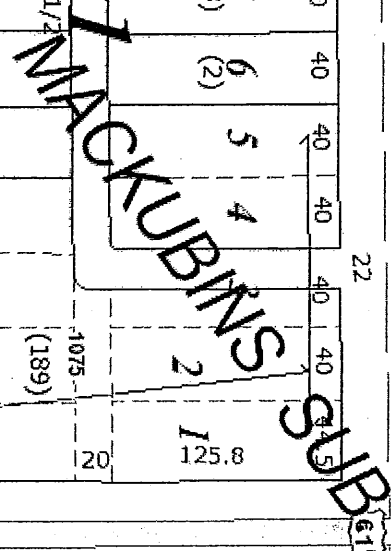
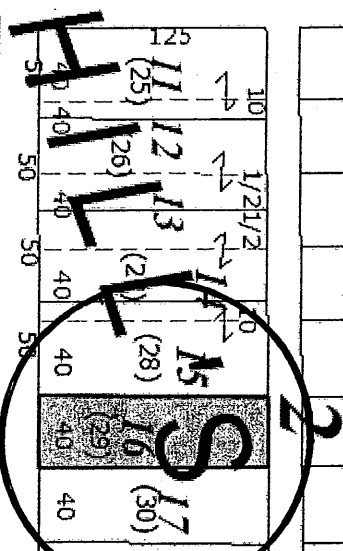
22

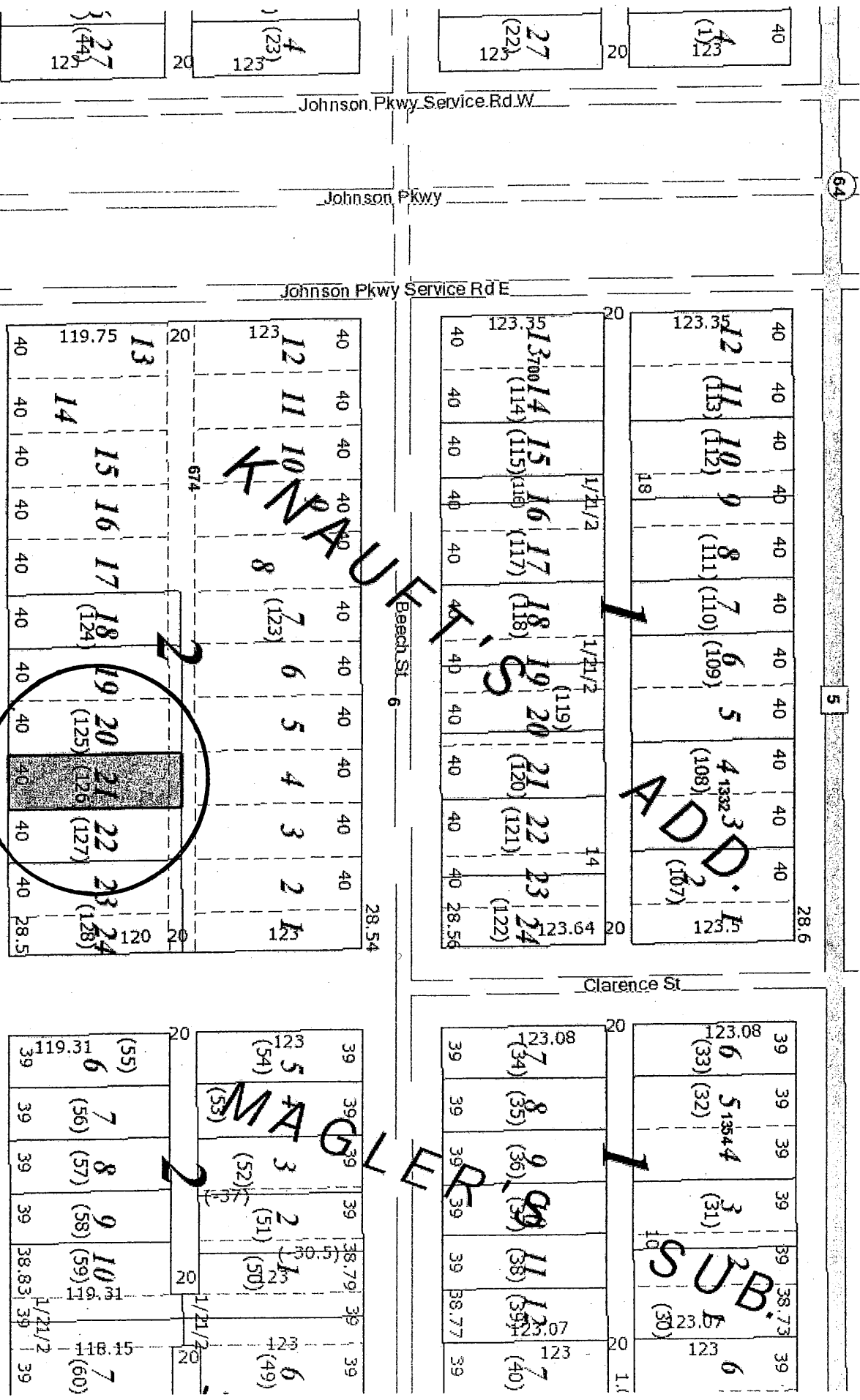
61

Cook Ave E

42

57.67 40





Margaret St

Clarence St

D.