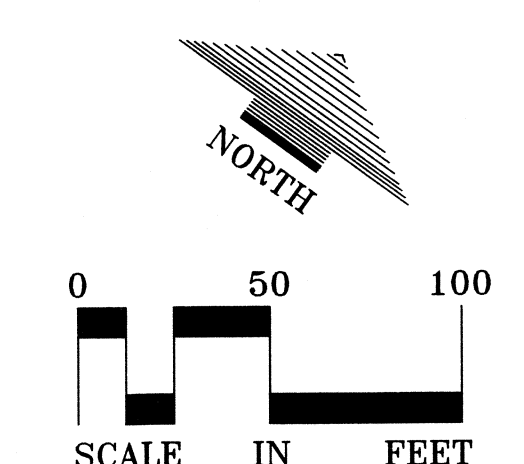
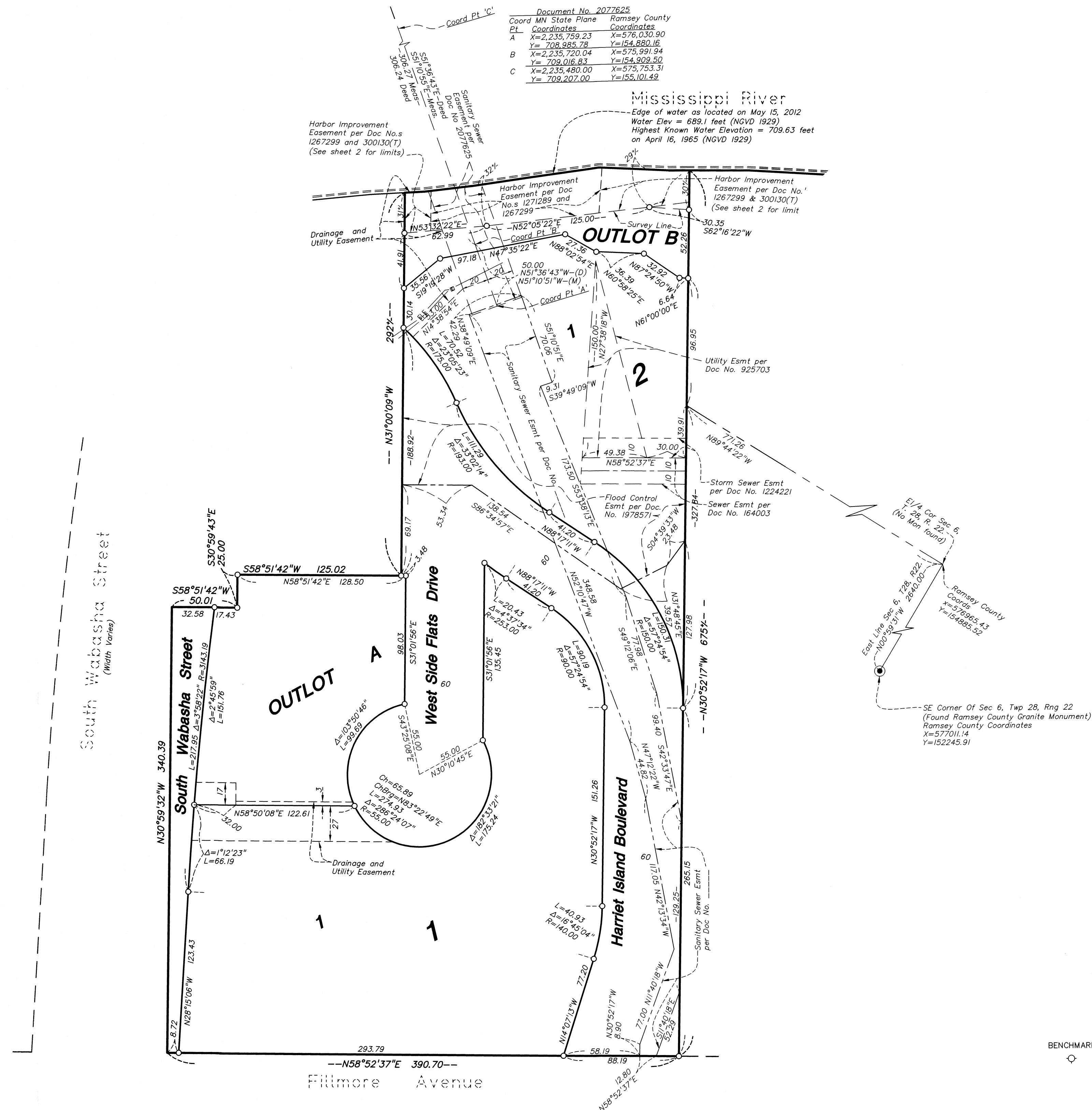


WEST SIDE FLATS



1 inch = 50 feet

○ DENOTES 1/2 INCH X 14 INCH IRON PIPE MONUMENT SET, MARKED "RLS 26724"

FOR THE PURPOSES OF THIS PLAT, THE EAST LINE OF SEC 6, T 28, R 22 IS ASSUMED TO HAVE A BEARING OF N 00° 59' 31" W

BENCHMARK
 Top Nut Hydrant on the north side of Fillmore Avenue, 260 feet +/- east of vacated Starkey Street
 Elevation = 712.59 feet (NGVD 1929 datum)

ROBERTSON'S ADDITION TO WEST ST. vacated Starkey Street PAUL