

COMMERCIAL PLAN REVIEW FOR CODE COMPLIANCE

GENERAL INFORMATION

A. Project Name: Building 12 Multi-Tenant
 B. Project Address: 755 North Prior Avenue, St. Paul, MN
 C. Project No.: 177008-3

APPLICABLE CODES

Code Title	Year	Adoption
A. Minnesota State Building Code (MSBC)	2015 Edition	2015 Edition
B. Minnesota State Fire Code (MSFC)	2015 Edition	2015 Edition
C. Minnesota State Electrical Code (MSEC)	2015 Edition	2015 Edition
D. Minnesota State Mechanical Code (MSMC)	2015 Edition	2015 Edition
E. Minnesota State Plumbing Code (MSPC)	2015 Edition	2015 Edition
F. Minnesota State Energy Code (MSEC)	2015 Edition	2015 Edition
G. Minnesota State Fire Alarm Code (MSFAC)	2015 Edition	2015 Edition
H. Minnesota State Fire Sprinkler Code (MSFSC)	2015 Edition	2015 Edition
I. Minnesota State Fire Alarm and Signaling Code (MSFASC)	2015 Edition	2015 Edition
J. Minnesota State Fire Alarm and Signaling Code (MSFASC)	2015 Edition	2015 Edition

BUILDING CLASSIFICATION

- 1. Building Occupancy Group: B (Office)
- 2. Building Height: 3-9 stories
- 3. Building Area: 110,000 sq ft
- 4. Building Use: Office

MEANS OF EGRESS

- 1. Exit Stair: 1-1/2 hours fire resistance
- 2. Exit Stair: 1-1/2 hours fire resistance
- 3. Exit Stair: 1-1/2 hours fire resistance
- 4. Exit Stair: 1-1/2 hours fire resistance
- 5. Exit Stair: 1-1/2 hours fire resistance
- 6. Exit Stair: 1-1/2 hours fire resistance
- 7. Exit Stair: 1-1/2 hours fire resistance
- 8. Exit Stair: 1-1/2 hours fire resistance
- 9. Exit Stair: 1-1/2 hours fire resistance
- 10. Exit Stair: 1-1/2 hours fire resistance

MEANS OF EGRESS

- 1. Exit Stair: 1-1/2 hours fire resistance
- 2. Exit Stair: 1-1/2 hours fire resistance
- 3. Exit Stair: 1-1/2 hours fire resistance
- 4. Exit Stair: 1-1/2 hours fire resistance
- 5. Exit Stair: 1-1/2 hours fire resistance
- 6. Exit Stair: 1-1/2 hours fire resistance
- 7. Exit Stair: 1-1/2 hours fire resistance
- 8. Exit Stair: 1-1/2 hours fire resistance
- 9. Exit Stair: 1-1/2 hours fire resistance
- 10. Exit Stair: 1-1/2 hours fire resistance

MEANS OF EGRESS

- 1. Exit Stair: 1-1/2 hours fire resistance
- 2. Exit Stair: 1-1/2 hours fire resistance
- 3. Exit Stair: 1-1/2 hours fire resistance
- 4. Exit Stair: 1-1/2 hours fire resistance
- 5. Exit Stair: 1-1/2 hours fire resistance
- 6. Exit Stair: 1-1/2 hours fire resistance
- 7. Exit Stair: 1-1/2 hours fire resistance
- 8. Exit Stair: 1-1/2 hours fire resistance
- 9. Exit Stair: 1-1/2 hours fire resistance
- 10. Exit Stair: 1-1/2 hours fire resistance

MEANS OF EGRESS

- 1. Exit Stair: 1-1/2 hours fire resistance
- 2. Exit Stair: 1-1/2 hours fire resistance
- 3. Exit Stair: 1-1/2 hours fire resistance
- 4. Exit Stair: 1-1/2 hours fire resistance
- 5. Exit Stair: 1-1/2 hours fire resistance
- 6. Exit Stair: 1-1/2 hours fire resistance
- 7. Exit Stair: 1-1/2 hours fire resistance
- 8. Exit Stair: 1-1/2 hours fire resistance
- 9. Exit Stair: 1-1/2 hours fire resistance
- 10. Exit Stair: 1-1/2 hours fire resistance

MEANS OF EGRESS

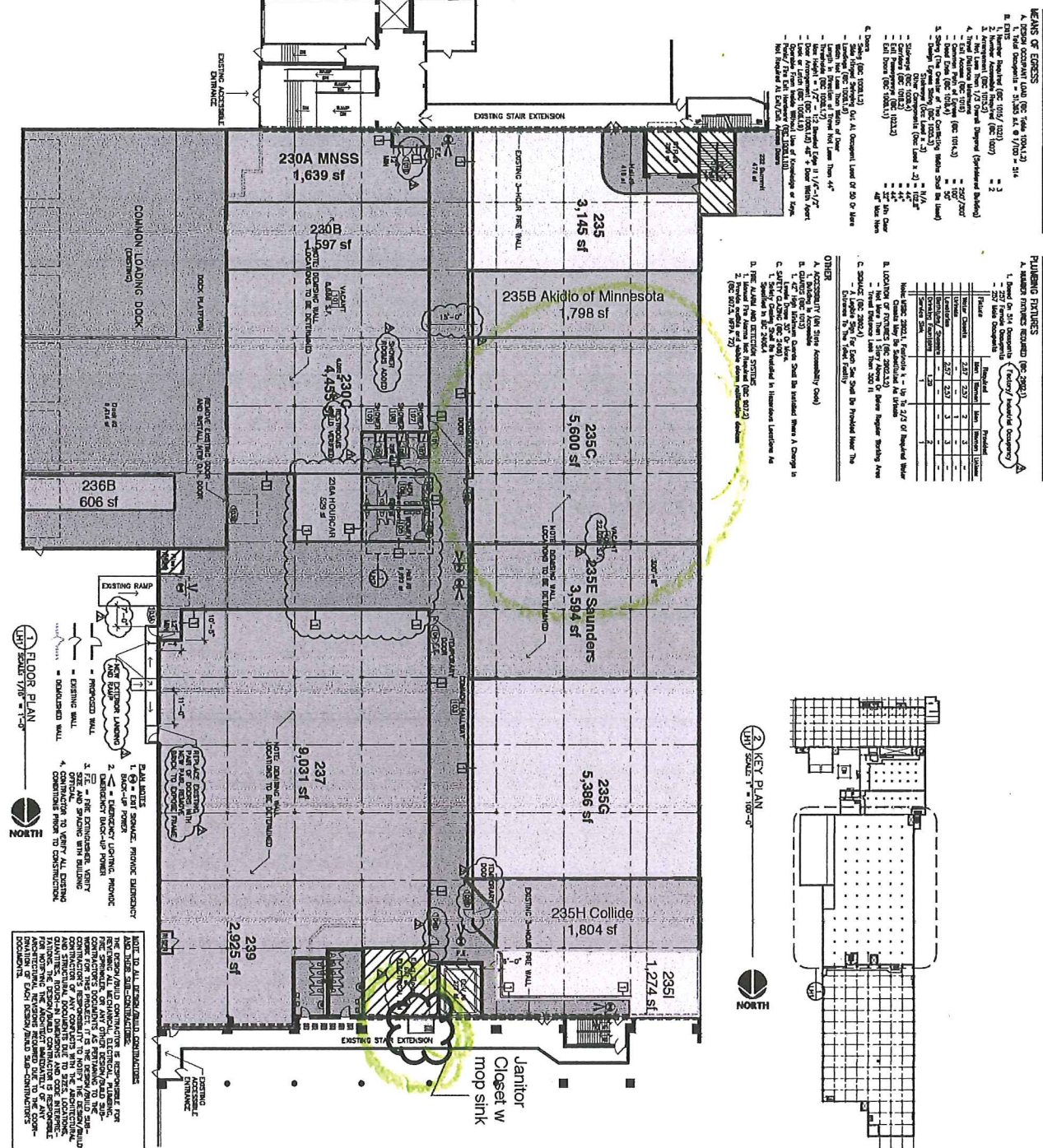
- 1. Exit Stair: 1-1/2 hours fire resistance
- 2. Exit Stair: 1-1/2 hours fire resistance
- 3. Exit Stair: 1-1/2 hours fire resistance
- 4. Exit Stair: 1-1/2 hours fire resistance
- 5. Exit Stair: 1-1/2 hours fire resistance
- 6. Exit Stair: 1-1/2 hours fire resistance
- 7. Exit Stair: 1-1/2 hours fire resistance
- 8. Exit Stair: 1-1/2 hours fire resistance
- 9. Exit Stair: 1-1/2 hours fire resistance
- 10. Exit Stair: 1-1/2 hours fire resistance

MEANS OF EGRESS

- 1. Exit Stair: 1-1/2 hours fire resistance
- 2. Exit Stair: 1-1/2 hours fire resistance
- 3. Exit Stair: 1-1/2 hours fire resistance
- 4. Exit Stair: 1-1/2 hours fire resistance
- 5. Exit Stair: 1-1/2 hours fire resistance
- 6. Exit Stair: 1-1/2 hours fire resistance
- 7. Exit Stair: 1-1/2 hours fire resistance
- 8. Exit Stair: 1-1/2 hours fire resistance
- 9. Exit Stair: 1-1/2 hours fire resistance
- 10. Exit Stair: 1-1/2 hours fire resistance

MEANS OF EGRESS

- 1. Exit Stair: 1-1/2 hours fire resistance
- 2. Exit Stair: 1-1/2 hours fire resistance
- 3. Exit Stair: 1-1/2 hours fire resistance
- 4. Exit Stair: 1-1/2 hours fire resistance
- 5. Exit Stair: 1-1/2 hours fire resistance
- 6. Exit Stair: 1-1/2 hours fire resistance
- 7. Exit Stair: 1-1/2 hours fire resistance
- 8. Exit Stair: 1-1/2 hours fire resistance
- 9. Exit Stair: 1-1/2 hours fire resistance
- 10. Exit Stair: 1-1/2 hours fire resistance



2 KEY PLAN
 1/8" = 1'-0"

1 FLOOR PLAN
 1/8" = 1'-0"

- 1. FIRE RESISTANCE: 1-1/2 hours fire resistance
- 2. FIRE RESISTANCE: 1-1/2 hours fire resistance
- 3. FIRE RESISTANCE: 1-1/2 hours fire resistance
- 4. FIRE RESISTANCE: 1-1/2 hours fire resistance
- 5. FIRE RESISTANCE: 1-1/2 hours fire resistance
- 6. FIRE RESISTANCE: 1-1/2 hours fire resistance
- 7. FIRE RESISTANCE: 1-1/2 hours fire resistance
- 8. FIRE RESISTANCE: 1-1/2 hours fire resistance
- 9. FIRE RESISTANCE: 1-1/2 hours fire resistance
- 10. FIRE RESISTANCE: 1-1/2 hours fire resistance

ARCHITECTS
 LHI
 515 North Hennepin Avenue, Suite 100
 Minneapolis, MN 55412
 Phone: 612.338.1111
 Fax: 612.338.1112
 www.lhi.com

PROJECT CONSULTANTS
 LHI
 515 North Hennepin Avenue, Suite 100
 Minneapolis, MN 55412
 Phone: 612.338.1111
 Fax: 612.338.1112
 www.lhi.com

GENERAL CONTRACTOR
 LHI
 515 North Hennepin Avenue, Suite 100
 Minneapolis, MN 55412
 Phone: 612.338.1111
 Fax: 612.338.1112
 www.lhi.com

MECHANICAL CONTRACTOR
 LHI
 515 North Hennepin Avenue, Suite 100
 Minneapolis, MN 55412
 Phone: 612.338.1111
 Fax: 612.338.1112
 www.lhi.com

ELECTRICAL CONTRACTOR
 LHI
 515 North Hennepin Avenue, Suite 100
 Minneapolis, MN 55412
 Phone: 612.338.1111
 Fax: 612.338.1112
 www.lhi.com

PLUMBING CONTRACTOR
 LHI
 515 North Hennepin Avenue, Suite 100
 Minneapolis, MN 55412
 Phone: 612.338.1111
 Fax: 612.338.1112
 www.lhi.com

CONCRETE CONTRACTOR
 LHI
 515 North Hennepin Avenue, Suite 100
 Minneapolis, MN 55412
 Phone: 612.338.1111
 Fax: 612.338.1112
 www.lhi.com

IRONWORK CONTRACTOR
 LHI
 515 North Hennepin Avenue, Suite 100
 Minneapolis, MN 55412
 Phone: 612.338.1111
 Fax: 612.338.1112
 www.lhi.com

GLASS CONTRACTOR
 LHI
 515 North Hennepin Avenue, Suite 100
 Minneapolis, MN 55412
 Phone: 612.338.1111
 Fax: 612.338.1112
 www.lhi.com

PAINT CONTRACTOR
 LHI
 515 North Hennepin Avenue, Suite 100
 Minneapolis, MN 55412
 Phone: 612.338.1111
 Fax: 612.338.1112
 www.lhi.com

ROOFING CONTRACTOR
 LHI
 515 North Hennepin Avenue, Suite 100
 Minneapolis, MN 55412
 Phone: 612.338.1111
 Fax: 612.338.1112
 www.lhi.com

MECHANICAL CONTRACTOR
 LHI
 515 North Hennepin Avenue, Suite 100
 Minneapolis, MN 55412
 Phone: 612.338.1111
 Fax: 612.338.1112
 www.lhi.com

ELECTRICAL CONTRACTOR
 LHI
 515 North Hennepin Avenue, Suite 100
 Minneapolis, MN 55412
 Phone: 612.338.1111
 Fax: 612.338.1112
 www.lhi.com

PLUMBING CONTRACTOR
 LHI
 515 North Hennepin Avenue, Suite 100
 Minneapolis, MN 55412
 Phone: 612.338.1111
 Fax: 612.338.1112
 www.lhi.com

CONCRETE CONTRACTOR
 LHI
 515 North Hennepin Avenue, Suite 100
 Minneapolis, MN 55412
 Phone: 612.338.1111
 Fax: 612.338.1112
 www.lhi.com

IRONWORK CONTRACTOR
 LHI
 515 North Hennepin Avenue, Suite 100
 Minneapolis, MN 55412
 Phone: 612.338.1111
 Fax: 612.338.1112
 www.lhi.com

GLASS CONTRACTOR
 LHI
 515 North Hennepin Avenue, Suite 100
 Minneapolis, MN 55412
 Phone: 612.338.1111
 Fax: 612.338.1112
 www.lhi.com

PAINT CONTRACTOR
 LHI
 515 North Hennepin Avenue, Suite 100
 Minneapolis, MN 55412
 Phone: 612.338.1111
 Fax: 612.338.1112
 www.lhi.com

ROOFING CONTRACTOR
 LHI
 515 North Hennepin Avenue, Suite 100
 Minneapolis, MN 55412
 Phone: 612.338.1111
 Fax: 612.338.1112
 www.lhi.com

BUILDING 12 MULTI-TENANT
 755 North Prior Avenue, St. Paul MN

Project No. 177008-3

REVISIONS

NO.	DATE	DESCRIPTION
1	12/21/18	REVISION
2	12/21/18	REVISION
3	12/21/18	REVISION
4	12/21/18	REVISION
5	12/21/18	REVISION
6	12/21/18	REVISION
7	12/21/18	REVISION
8	12/21/18	REVISION
9	12/21/18	REVISION
10	12/21/18	REVISION

PROJECT INFORMATION

Client: LHI
 Project: Building 12 Multi-Tenant
 Project Designer: JAMES B
 Drawn By: JMB
 Checked By: TL
 Date: 12/21/18

PROJECT INFORMATION

Client: LHI
 Project: Building 12 Multi-Tenant
 Project Designer: JAMES B
 Drawn By: JMB
 Checked By: TL
 Date: 12/21/18