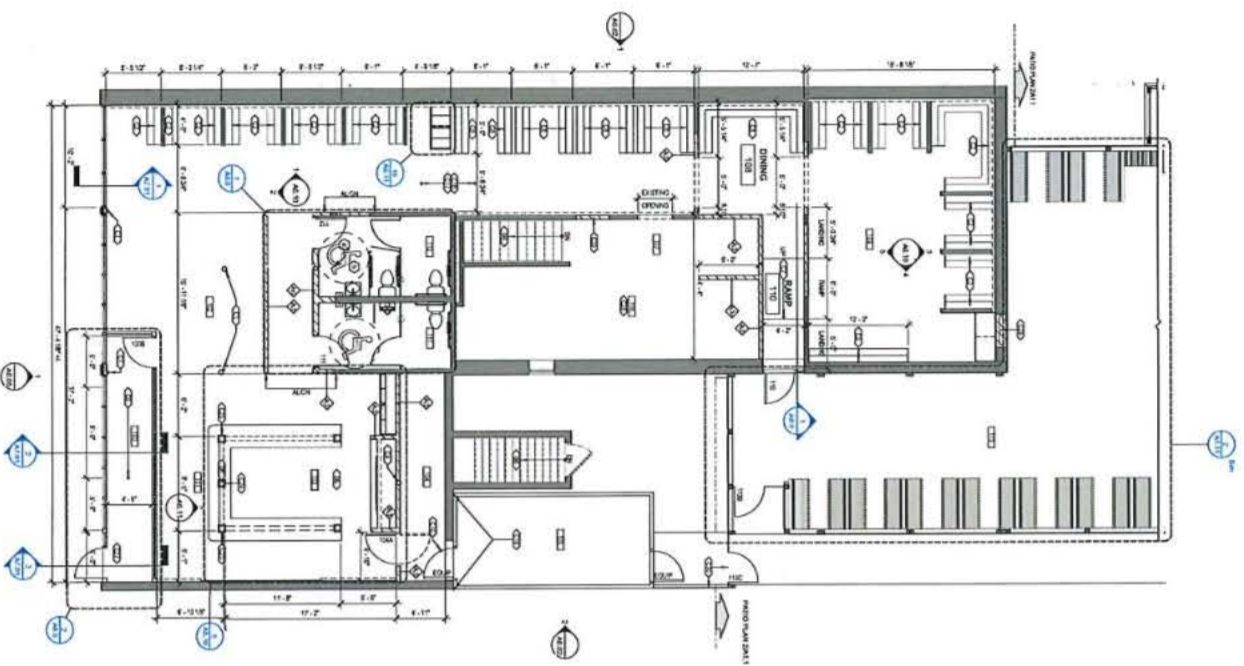
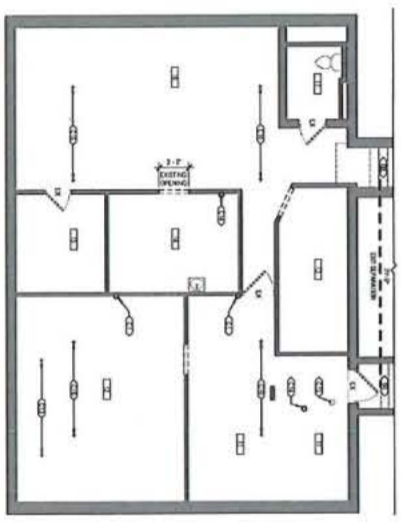


DIMENSIONS

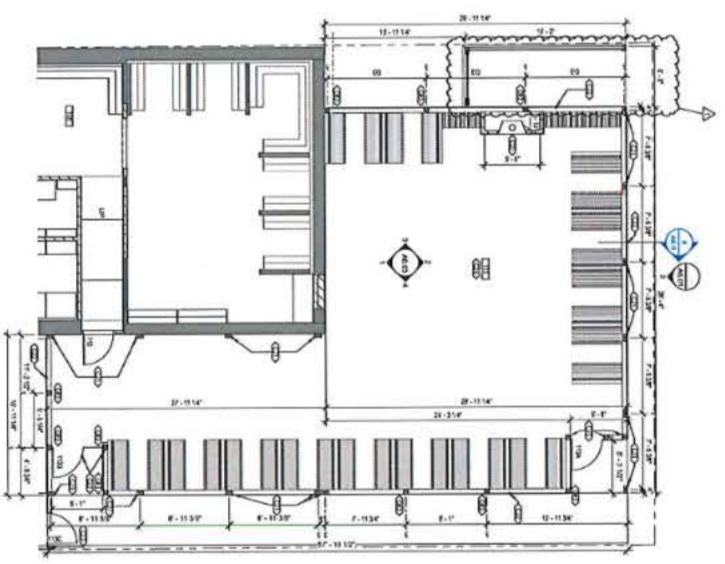
1 MAIN LEVEL CONSTRUCTION PLAN



2 LOWER LEVEL CONSTRUCTION PLAN



3 PATIO CONSTRUCTION PLAN



LEGEND - CONSTRUCTION

- EXISTING CONSTRUCTION TO REMAIN
- EXISTING FINISH, NEW CONSTRUCTION TO REMAIN
- NEW EXISTING CONSTRUCTION TO BE DEMOLISHED, NEW TO REMAIN THE EXISTING FINISH
- NEW EXISTING CONSTRUCTION - NEW TO REMAIN THE EXISTING FINISH
- NEW CONSTRUCTION - NEW TO REMAIN THE EXISTING FINISH
- NEW EXISTING CONSTRUCTION - NEW TO REMAIN THE EXISTING FINISH

SCOPE NOTES - CONSTRUCTION

- ALL NEW FINISHES SHALL BE THE SAME AS THE EXISTING FINISHES.
- REMOVE EXISTING FINISHES AND REPAIR OR REPLACE AS NECESSARY TO PREPARE FOR NEW FINISHES.
- REMOVE EXISTING FINISHES AND REPAIR OR REPLACE AS NECESSARY TO PREPARE FOR NEW FINISHES.
- REMOVE EXISTING FINISHES AND REPAIR OR REPLACE AS NECESSARY TO PREPARE FOR NEW FINISHES.
- REMOVE EXISTING FINISHES AND REPAIR OR REPLACE AS NECESSARY TO PREPARE FOR NEW FINISHES.
- REMOVE EXISTING FINISHES AND REPAIR OR REPLACE AS NECESSARY TO PREPARE FOR NEW FINISHES.
- REMOVE EXISTING FINISHES AND REPAIR OR REPLACE AS NECESSARY TO PREPARE FOR NEW FINISHES.
- REMOVE EXISTING FINISHES AND REPAIR OR REPLACE AS NECESSARY TO PREPARE FOR NEW FINISHES.
- REMOVE EXISTING FINISHES AND REPAIR OR REPLACE AS NECESSARY TO PREPARE FOR NEW FINISHES.
- REMOVE EXISTING FINISHES AND REPAIR OR REPLACE AS NECESSARY TO PREPARE FOR NEW FINISHES.

SCOPE NOTES - PLUMBING

- PLUMBING SHALL BE INSTALLED AND TESTED IN ACCORDANCE WITH THE CITY OF ST. PAUL PLUMBING CODE AND THE MINNESOTA PLUMBING CODE.
- PLUMBING SHALL BE INSTALLED AND TESTED IN ACCORDANCE WITH THE CITY OF ST. PAUL PLUMBING CODE AND THE MINNESOTA PLUMBING CODE.
- PLUMBING SHALL BE INSTALLED AND TESTED IN ACCORDANCE WITH THE CITY OF ST. PAUL PLUMBING CODE AND THE MINNESOTA PLUMBING CODE.
- PLUMBING SHALL BE INSTALLED AND TESTED IN ACCORDANCE WITH THE CITY OF ST. PAUL PLUMBING CODE AND THE MINNESOTA PLUMBING CODE.
- PLUMBING SHALL BE INSTALLED AND TESTED IN ACCORDANCE WITH THE CITY OF ST. PAUL PLUMBING CODE AND THE MINNESOTA PLUMBING CODE.
- PLUMBING SHALL BE INSTALLED AND TESTED IN ACCORDANCE WITH THE CITY OF ST. PAUL PLUMBING CODE AND THE MINNESOTA PLUMBING CODE.
- PLUMBING SHALL BE INSTALLED AND TESTED IN ACCORDANCE WITH THE CITY OF ST. PAUL PLUMBING CODE AND THE MINNESOTA PLUMBING CODE.
- PLUMBING SHALL BE INSTALLED AND TESTED IN ACCORDANCE WITH THE CITY OF ST. PAUL PLUMBING CODE AND THE MINNESOTA PLUMBING CODE.
- PLUMBING SHALL BE INSTALLED AND TESTED IN ACCORDANCE WITH THE CITY OF ST. PAUL PLUMBING CODE AND THE MINNESOTA PLUMBING CODE.
- PLUMBING SHALL BE INSTALLED AND TESTED IN ACCORDANCE WITH THE CITY OF ST. PAUL PLUMBING CODE AND THE MINNESOTA PLUMBING CODE.

KEYNOTES

- EXISTING CONSTRUCTION TO REMAIN
- EXISTING FINISH, NEW CONSTRUCTION TO REMAIN
- NEW EXISTING CONSTRUCTION TO BE DEMOLISHED, NEW TO REMAIN THE EXISTING FINISH
- NEW EXISTING CONSTRUCTION - NEW TO REMAIN THE EXISTING FINISH
- NEW CONSTRUCTION - NEW TO REMAIN THE EXISTING FINISH
- NEW EXISTING CONSTRUCTION - NEW TO REMAIN THE EXISTING FINISH
- NEW CONSTRUCTION - NEW TO REMAIN THE EXISTING FINISH
- NEW EXISTING CONSTRUCTION - NEW TO REMAIN THE EXISTING FINISH
- NEW CONSTRUCTION - NEW TO REMAIN THE EXISTING FINISH
- NEW EXISTING CONSTRUCTION - NEW TO REMAIN THE EXISTING FINISH

ROOM	FINISH	ROOM	FINISH
101	CEILING	102	CEILING
101	FLOOR	102	FLOOR
101	WALL	102	WALL
101	DOOR	102	DOOR
101	WINDOW	102	WINDOW
101	STAIR	102	STAIR
101	BATH	102	BATH
101	KITCHEN	102	KITCHEN
101	DINING	102	DINING
101	LIVING	102	LIVING
101	SLEEPING	102	SLEEPING
101	BEDROOM	102	BEDROOM
101	BATH	102	BATH
101	HALL	102	HALL
101	CLOSET	102	CLOSET
101	PORCH	102	PORCH
101	PATIO	102	PATIO
101	LANDSCAPE	102	LANDSCAPE

REVIEWED FOR CODE COMPLIANCE

GROVELAND TAP

1834 ST. CLAIRE AVENUE | ST. PAUL, MN



DESIGNED BY: **Julia Shvach**
 DATE: 02/07/2022
 PROJECT NO: 00086
 DRAWN BY: CR
 CHECKED BY: LS
 DATE: 02/07/2022

A1.11

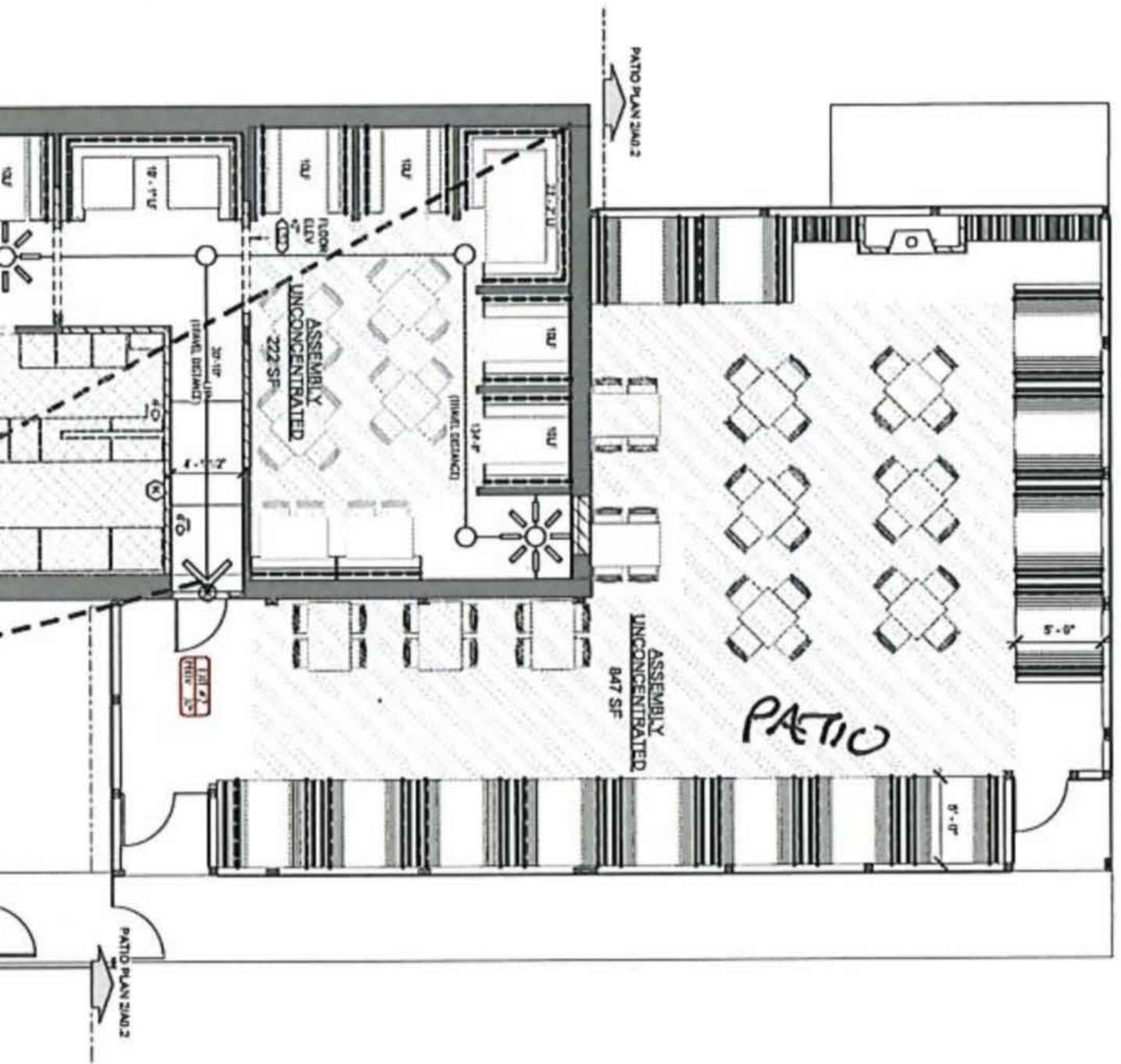
Property / include parking lot

Summarize this file X

20 TOTAL PARKING SPACE
1 HANDICAPPED



SQUARE FOOTAGE



garbage

SQUARE FOOT

