

Attachment B - HRA Property

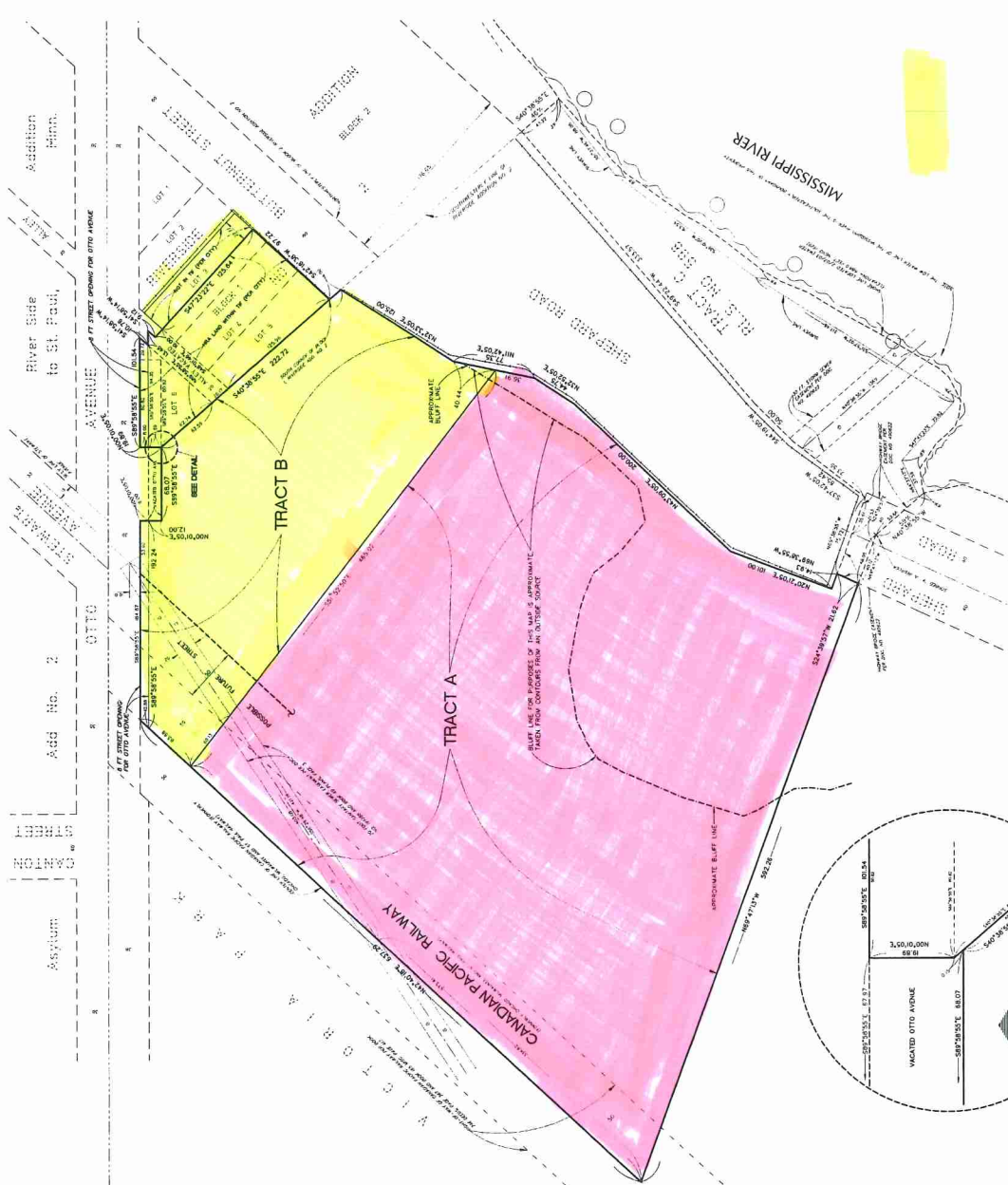
R.L.S. NO 598
 Lots 3, 4, 5 & 6,
 Block 1, RIVERSIDE
 ADDITION

City of Saint Paul, Minnesota
 CITY OF SAINT PAUL, MINN.
 Joan Fisher / 651.286.6694
 125 North Central Avenue
 St. Paul, MN 55107

LOUCKS ASSOCIATES
 Planning, Landmarks, & Surveying
 1000 Grand Avenue, Suite 100
 St. Paul, MN 55107
 Phone: 651.222.1111
 Fax: 651.222.1112
 www.loucks.com

[Signature]
 Title: [Blank]
 Date: [Blank]

PROPERTY EXHIBIT MAP
 PROJECT NO.: 01-794C
 SHEET NO.: 1 of 1



TRACT A:
 Total Area Tract A: 242,241 sq. ft. (6.53 Ac)
 Less Railroad Right-of-Way: -20,254 sq. ft. (0.46 Ac)
 Less 150' Wide 'Possible Future Street' in NW corner: -150,708 sq. ft. (3.44 Ac)
APPROXIMATE NET AREA: 171,279 sq. ft. (3.93 Ac)

TRACT B:
 Total Area Tract B: 70,867 sq. ft. (1.63 Ac)
 Less Veneer Otto Avenue: -816 sq. ft. (0.02 Ac)
 Less Railroad Right-of-Way: -4,246 sq. ft. (0.10 Ac)
 Less 8' R. Otto Avenue Opening: -1,608 sq. ft. (0.04 Ac)
 Less 150' Wide 'Possible Future Street' in NW corner: -150,708 sq. ft. (3.44 Ac)
APPROXIMATE NET AREA: 65,587 sq. ft. (1.51 Ac)

HRA Land Within TIF DISTRICT:
 Total Area Lots 4, 5, 6, Former Otto Avenue Right-of-Way, Veneer Alley, & part of Lot 3: 16,761 sq. ft. (0.38 Ac)
 Less 8' R. Otto Avenue Opening: -284 sq. ft. (0.01 Ac)
NET AREA: 16,477 sq. ft. (0.37 Ac)

2 acre buildable site
 5.6 acre restricted site

