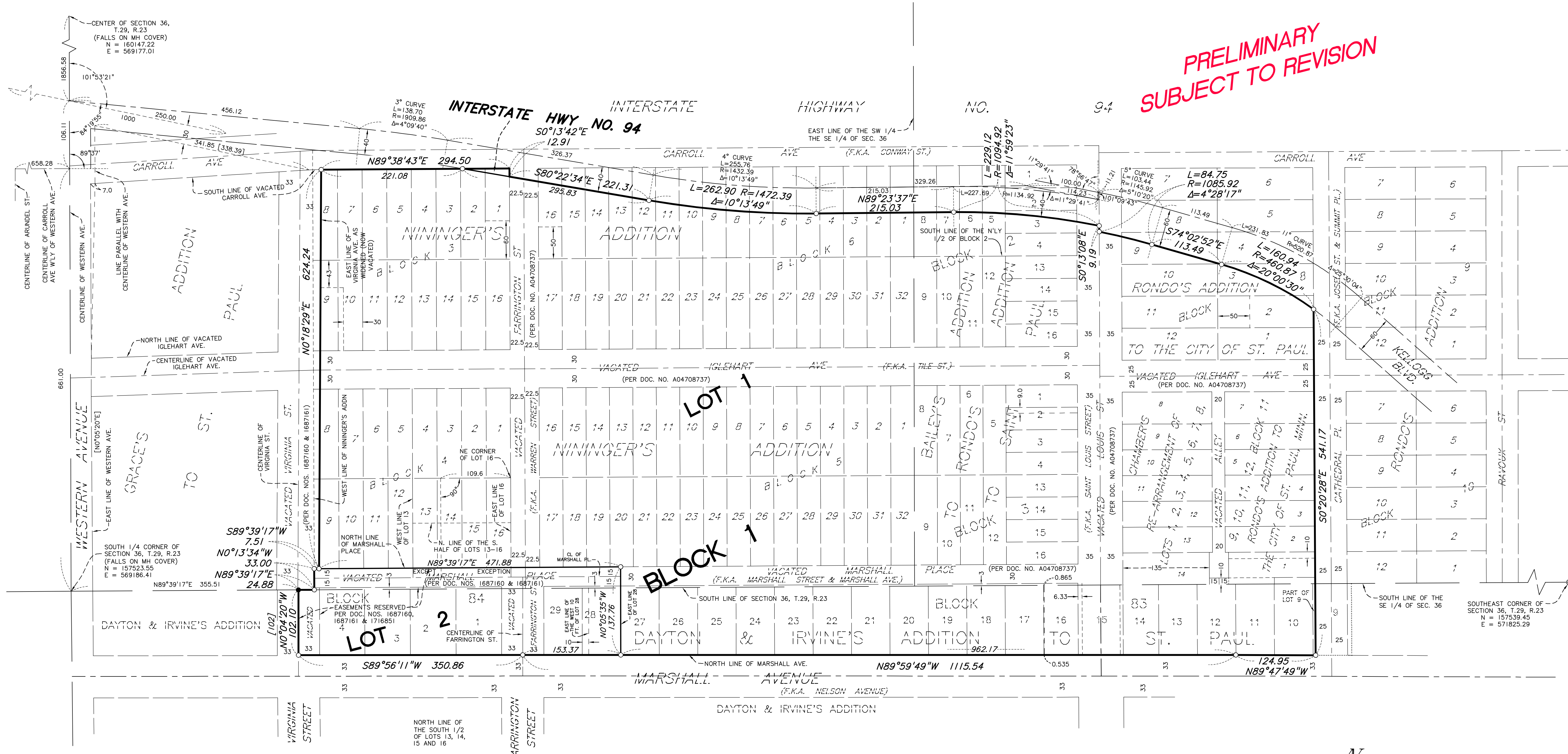


# SAINT PAUL COLLEGE

**PRELIMINARY  
SUBJECT TO REVISION**



SOUTH 1/4 CORNER OF SECTION 36, T.29, R.23 (FALLS ON MH COVER)  
N = 160147.22  
E = 569177.01

SOUTH 1/4 CORNER OF SECTION 36, T.29, R.23 (FALLS ON MH COVER)  
N = 157523.55  
E = 569186.41

SOUTHEAST CORNER OF SECTION 36, T.29, R.23  
N = 157539.45  
E = 571825.29

- Denotes City of Saint Paul cast iron monument, unless otherwise noted
  - Denotes 1/2 inch by 14 inch iron pipe monument set and marked with PLS 15480, unless otherwise noted
  - ⊙ Denotes set 1.17 inch diameter copper magnetized marker with disc cap affixed stamped LS 15480
- Orientation of this bearing system is based upon Ramsey County Coordinates, North American Datum of 1983, 1986 Adjustment.
- Elevations for easements shown hereon are per City of Saint Paul Datum.
- City Datum: 0 = 694.1 feet above sea level (1929 Adjustment).

[ ] Bearings and/or dimensions listed within brackets are per record document.

