

WEST WISON ARCHITECTS
 1301 American Blvd E
 Suite 100
 Bloomington, MN 55405
 Tel: #612 878-6600
 www.kasswison.com

Client/Architect:
 SKRM Engineers
 1127 Lake Brown Drive,
 Suite 700
 Minneapolis, MN 55403
 P: 763-843-0450

Landscaper:
 CALIX
 875 Cleveland Ave N,
 Suite 207
 Saint Paul, MN 55104

MEP:
 C&T Thomas Associates Inc.
 4275 White Bear Pkwy #100
 Saint Paul, MN 55110
 P: 651 428 2649

Interior Designer:
 Kass Wison Architects

West Side Flats IIIA
 100 Langdon Ave., St. Paul, MN 55107

Project Number: 190118
 Date: 12/12/2019

Architect's Certificate: I hereby certify that this plan, specification and report was prepared by me or under my direct supervision and that I am a duly licensed architect under the laws of the State of Minnesota.

WEST WISON ARCHITECTS
 1301 American Blvd E, Suite 100
 Bloomington, MN 55405
 Tel: 612 878 6600

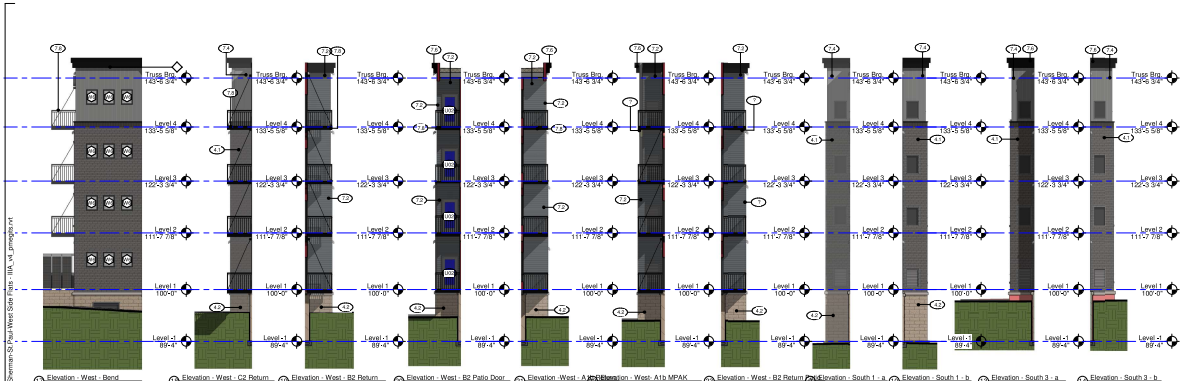
WEST SIDE FLATS IIIA, LLC
 100 Langdon Ave., St. Paul, MN 55107

Project Number: 190118
 Date: 12/12/2019

Architect's Certificate: I hereby certify that this plan, specification and report was prepared by me or under my direct supervision and that I am a duly licensed architect under the laws of the State of Minnesota.

WEST WISON ARCHITECTS
 1301 American Blvd E, Suite 100
 Bloomington, MN 55405
 Tel: 612 878 6600

Exterior Elevations
 As indicated
A500



- EXTERIOR MATERIAL FINISH**
- 1. PRECAST SLAB - COLOR TBD
 - 2. SOUL CITY UTILITY BRICK VINTAGE BLACK SMOOTH
 - 3. PLANT BRICK VINTAGE
 - 4. BRICK - BOLDER COURSE BRICK COLOR-TBD
 - 5. METAL SUNSHADE
 - 6. WOODSTONE PLASTIC SERIES SUMMER WINEST CRP FOR BRICK
 - 7. SPRAYING - COLOR TBD
 - 8. SP BRICKS - 100 TALL WALL STREET
 - 9. SP BRICKS - 100 TALL BRICK METAL
 - 10. METAL BRICKS - VERTICAL STANDING BEAM
 - 11. METAL BRICKS - VERTICAL STANDING BEAM
 - 12. METAL BRICKS - VERTICAL STANDING BEAM
 - 13. METAL BRICKS - VERTICAL STANDING BEAM
 - 14. METAL BRICKS - VERTICAL STANDING BEAM
 - 15. METAL BRICKS - VERTICAL STANDING BEAM
 - 16. METAL BRICKS - VERTICAL STANDING BEAM
 - 17. METAL BRICKS - VERTICAL STANDING BEAM
 - 18. METAL BRICKS - VERTICAL STANDING BEAM
 - 19. METAL BRICKS - VERTICAL STANDING BEAM
 - 20. METAL BRICKS - VERTICAL STANDING BEAM
 - 21. METAL BRICKS - VERTICAL STANDING BEAM
 - 22. METAL BRICKS - VERTICAL STANDING BEAM
 - 23. METAL BRICKS - VERTICAL STANDING BEAM
 - 24. METAL BRICKS - VERTICAL STANDING BEAM
 - 25. METAL BRICKS - VERTICAL STANDING BEAM
 - 26. METAL BRICKS - VERTICAL STANDING BEAM
 - 27. METAL BRICKS - VERTICAL STANDING BEAM
 - 28. METAL BRICKS - VERTICAL STANDING BEAM
 - 29. METAL BRICKS - VERTICAL STANDING BEAM
 - 30. METAL BRICKS - VERTICAL STANDING BEAM
 - 31. METAL BRICKS - VERTICAL STANDING BEAM
 - 32. METAL BRICKS - VERTICAL STANDING BEAM
 - 33. METAL BRICKS - VERTICAL STANDING BEAM
 - 34. METAL BRICKS - VERTICAL STANDING BEAM
 - 35. METAL BRICKS - VERTICAL STANDING BEAM
 - 36. METAL BRICKS - VERTICAL STANDING BEAM
 - 37. METAL BRICKS - VERTICAL STANDING BEAM
 - 38. METAL BRICKS - VERTICAL STANDING BEAM
 - 39. METAL BRICKS - VERTICAL STANDING BEAM
 - 40. METAL BRICKS - VERTICAL STANDING BEAM
 - 41. METAL BRICKS - VERTICAL STANDING BEAM
 - 42. METAL BRICKS - VERTICAL STANDING BEAM
 - 43. METAL BRICKS - VERTICAL STANDING BEAM
 - 44. METAL BRICKS - VERTICAL STANDING BEAM
 - 45. METAL BRICKS - VERTICAL STANDING BEAM
 - 46. METAL BRICKS - VERTICAL STANDING BEAM
 - 47. METAL BRICKS - VERTICAL STANDING BEAM
 - 48. METAL BRICKS - VERTICAL STANDING BEAM
 - 49. METAL BRICKS - VERTICAL STANDING BEAM
 - 50. METAL BRICKS - VERTICAL STANDING BEAM

- EXTERIOR ELEVATION NOTES**
1. SEE DRAWING SHEETS A501 FOR WINDOW SIZES, AND ALL DETAILS.
 2. SEE A502 FOR EXTERIOR WALL DETAILS.
 3. ALL UNFINISHED AT EXTERIOR WALLS ARE TO BE FINISHED TO INTERIOR FACE OF WALL AT FINISH WALL GUESTS INTERIOR FINISH.
 4. SEE SHEETS A501 FOR INTERIOR AND EXTERIOR WALL FINISHES.
 5. EXPANSION JOINTS REQUIRED AT EXTERIOR WALL FINISHES AT INTERIOR WALL CENTER OF STUD AT FINISH WALL GUESTS INTERIOR FINISH.
 6. FINISH BRICK EXPANSION JOINTS AT ALL EXTERIOR CORNERS SEE SHEET A501.
 7. ALL WINDOWS IN BRICK TO HAVE STORM SILLS.
 8. FOR VERTICAL JOINTS OF BRICKS, BRICKS TO BE FINISHED TO INTERIOR FACE.
 9. ISOMETRIC ELEVATION IS FROM PLANT FINISH TO INTERIOR FINISH.
 10. TO BE FINISHED TO INTERIOR FINISH.
 11. TO BE FINISHED TO INTERIOR FINISH.
 12. TO BE FINISHED TO INTERIOR FINISH.
 13. TO BE FINISHED TO INTERIOR FINISH.
 14. TO BE FINISHED TO INTERIOR FINISH.
 15. TO BE FINISHED TO INTERIOR FINISH.
 16. TO BE FINISHED TO INTERIOR FINISH.
 17. TO BE FINISHED TO INTERIOR FINISH.
 18. TO BE FINISHED TO INTERIOR FINISH.
 19. TO BE FINISHED TO INTERIOR FINISH.
 20. TO BE FINISHED TO INTERIOR FINISH.
 21. TO BE FINISHED TO INTERIOR FINISH.
 22. TO BE FINISHED TO INTERIOR FINISH.
 23. TO BE FINISHED TO INTERIOR FINISH.
 24. TO BE FINISHED TO INTERIOR FINISH.
 25. TO BE FINISHED TO INTERIOR FINISH.
 26. TO BE FINISHED TO INTERIOR FINISH.
 27. TO BE FINISHED TO INTERIOR FINISH.
 28. TO BE FINISHED TO INTERIOR FINISH.
 29. TO BE FINISHED TO INTERIOR FINISH.
 30. TO BE FINISHED TO INTERIOR FINISH.
 31. TO BE FINISHED TO INTERIOR FINISH.
 32. TO BE FINISHED TO INTERIOR FINISH.
 33. TO BE FINISHED TO INTERIOR FINISH.
 34. TO BE FINISHED TO INTERIOR FINISH.
 35. TO BE FINISHED TO INTERIOR FINISH.
 36. TO BE FINISHED TO INTERIOR FINISH.
 37. TO BE FINISHED TO INTERIOR FINISH.
 38. TO BE FINISHED TO INTERIOR FINISH.
 39. TO BE FINISHED TO INTERIOR FINISH.
 40. TO BE FINISHED TO INTERIOR FINISH.
 41. TO BE FINISHED TO INTERIOR FINISH.
 42. TO BE FINISHED TO INTERIOR FINISH.
 43. TO BE FINISHED TO INTERIOR FINISH.
 44. TO BE FINISHED TO INTERIOR FINISH.
 45. TO BE FINISHED TO INTERIOR FINISH.
 46. TO BE FINISHED TO INTERIOR FINISH.
 47. TO BE FINISHED TO INTERIOR FINISH.
 48. TO BE FINISHED TO INTERIOR FINISH.
 49. TO BE FINISHED TO INTERIOR FINISH.
 50. TO BE FINISHED TO INTERIOR FINISH.

EXTERIOR FACADE PERCENTAGE - SOUTH 3

BRICK	1,080 SF	23%
GLASS	880 SF	19%
CEM	100 SF	2%
METAL	1,510 SF	34%
CONC	420 SF	9%
TOTAL	3,290 SF	77%

EXTERIOR FACADE PERCENTAGE - SOUTH 1

BRICK	1,080 SF	23%
GLASS	880 SF	19%
CEM	100 SF	2%
METAL	1,510 SF	34%
CONC	420 SF	9%
TOTAL	3,290 SF	77%

EXTERIOR FACADE PERCENTAGE - SOUTH 2

BRICK	810 SF	18%
GLASS	880 SF	19%
CEM	100 SF	2%
METAL	1,510 SF	34%
CONC	420 SF	9%
TOTAL	2,620 SF	62%

EXTERIOR FACADE PERCENTAGE - WEST

BRICK	2,380 SF	23%
GLASS	2,540 SF	25%
CEM	2,000 SF	20%
METAL	2,520 SF	25%
CONC	2,520 SF	25%
TOTAL	14,220 SF	100%

EXTERIOR FACADE PERCENTAGE - SOUTH 2

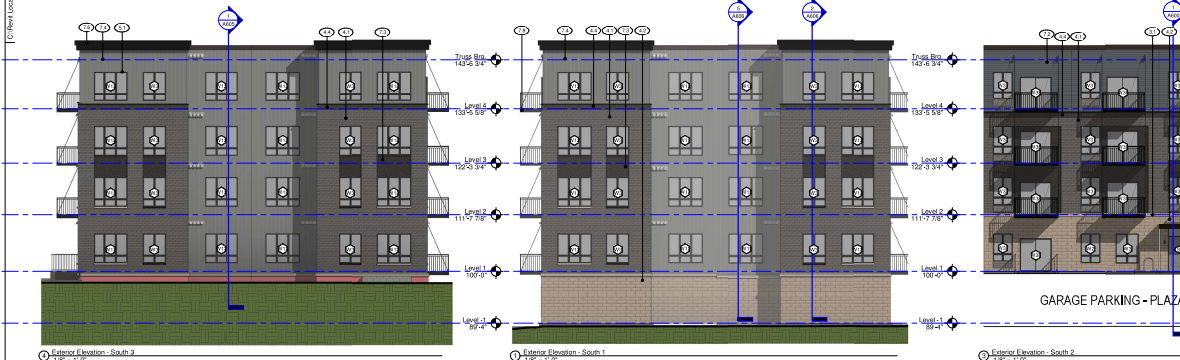
BRICK	810 SF	18%
GLASS	880 SF	19%
CEM	100 SF	2%
METAL	1,510 SF	34%
CONC	420 SF	9%
TOTAL	2,620 SF	62%

EXTERIOR FACADE PERCENTAGE - WEST

BRICK	2,380 SF	23%
GLASS	2,540 SF	25%
CEM	2,000 SF	20%
METAL	2,520 SF	25%
CONC	2,520 SF	25%
TOTAL	14,220 SF	100%

FINISH SCHEDULE

- 1. ARCHITECTURAL CONCRETE
- 2. ARCHITECTURAL CONCRETE BRICK
- 3. ARCHITECTURAL CONCRETE BRICK
- 4. ARCHITECTURAL CONCRETE BRICK
- 5. ARCHITECTURAL CONCRETE BRICK
- 6. ARCHITECTURAL CONCRETE BRICK
- 7. ARCHITECTURAL CONCRETE BRICK
- 8. ARCHITECTURAL CONCRETE BRICK
- 9. ARCHITECTURAL CONCRETE BRICK
- 10. ARCHITECTURAL CONCRETE BRICK
- 11. ARCHITECTURAL CONCRETE BRICK
- 12. ARCHITECTURAL CONCRETE BRICK
- 13. ARCHITECTURAL CONCRETE BRICK
- 14. ARCHITECTURAL CONCRETE BRICK
- 15. ARCHITECTURAL CONCRETE BRICK
- 16. ARCHITECTURAL CONCRETE BRICK
- 17. ARCHITECTURAL CONCRETE BRICK
- 18. ARCHITECTURAL CONCRETE BRICK
- 19. ARCHITECTURAL CONCRETE BRICK
- 20. ARCHITECTURAL CONCRETE BRICK
- 21. ARCHITECTURAL CONCRETE BRICK
- 22. ARCHITECTURAL CONCRETE BRICK
- 23. ARCHITECTURAL CONCRETE BRICK
- 24. ARCHITECTURAL CONCRETE BRICK
- 25. ARCHITECTURAL CONCRETE BRICK
- 26. ARCHITECTURAL CONCRETE BRICK
- 27. ARCHITECTURAL CONCRETE BRICK
- 28. ARCHITECTURAL CONCRETE BRICK
- 29. ARCHITECTURAL CONCRETE BRICK
- 30. ARCHITECTURAL CONCRETE BRICK
- 31. ARCHITECTURAL CONCRETE BRICK
- 32. ARCHITECTURAL CONCRETE BRICK
- 33. ARCHITECTURAL CONCRETE BRICK
- 34. ARCHITECTURAL CONCRETE BRICK
- 35. ARCHITECTURAL CONCRETE BRICK
- 36. ARCHITECTURAL CONCRETE BRICK
- 37. ARCHITECTURAL CONCRETE BRICK
- 38. ARCHITECTURAL CONCRETE BRICK
- 39. ARCHITECTURAL CONCRETE BRICK
- 40. ARCHITECTURAL CONCRETE BRICK
- 41. ARCHITECTURAL CONCRETE BRICK
- 42. ARCHITECTURAL CONCRETE BRICK
- 43. ARCHITECTURAL CONCRETE BRICK
- 44. ARCHITECTURAL CONCRETE BRICK
- 45. ARCHITECTURAL CONCRETE BRICK
- 46. ARCHITECTURAL CONCRETE BRICK
- 47. ARCHITECTURAL CONCRETE BRICK
- 48. ARCHITECTURAL CONCRETE BRICK
- 49. ARCHITECTURAL CONCRETE BRICK
- 50. ARCHITECTURAL CONCRETE BRICK



West Side Flats IIIA
 1300 American Blvd E
 Suite 100
 Bloomington, MN 55405
 Tel: #612 878-6600
 www.kasswisn.com

SKRM Engineers
 1127 Lake Street Drive,
 Suite 700
 Minneapolis, MN 55403
 P: 763-845-0450

Landscaping
 CALIX
 475 Cleveland Ave N,
 Suite 207
 Saint Paul, MN 55104

MEP
 Cedar Thomas Associates Inc.
 4275 White Bear Pkwy #100
 Saint Paul, MN 55116
 P: 651 428 9649

Interior Designer:
 Kass Wisn Architects

West Side Flats IIIA
 1300 American Blvd E,
 Bloomington, MN 55107

West Side Flats IIIA LLC
 1300 American Blvd E,
 Bloomington, MN 55107

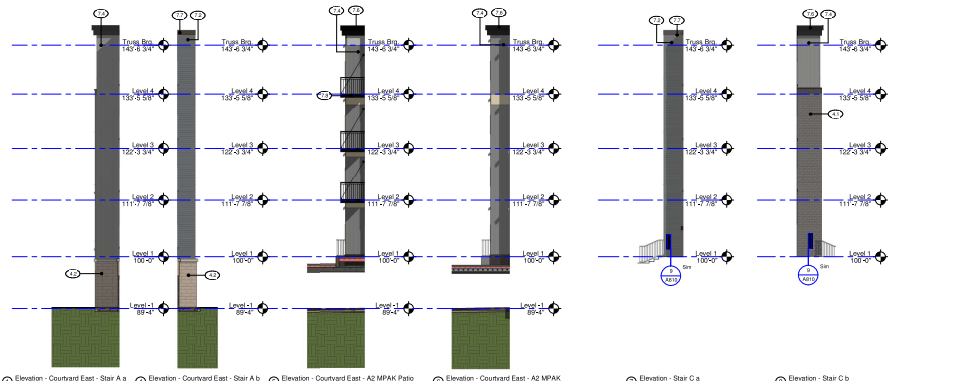
Project Number: 19018
Date: 12/12/2019

DESIGNER: KASS WISN ARCHITECTS
DATE: 12/12/2019
 I HEREBY CERTIFY THAT THIS PLAN, SPECIFICATION OR REPORT WAS PREPARED AND THAT I AM A REGISTERED ARCHITECT UNDER THE LAWS OF THE STATE OF MINNESOTA.

Project Name: West Side Flats IIIA
Project Number: 19018
Date: 12/12/2019
As Indicated
A501

C:\Users\Kas\OneDrive\Documents\3100 West Side Flats IIIA_v1.dwg

12/20/2018 1:33:09 PM
Kas Wilson
Architect



- EXTERIOR MATERIAL PALETTE**
- 1. PRECAST SILL - COLOR: TRD
 - 2. DRAIN CITY LITE LTR BRICK VANTAGE BLACK SMOOTH
 - 3. SPLIT FACE MAWLD MW
 - 4. BRICK 1 - HOLDER COURSE SILL COLOR: TRD
 - 5. METAL SHIMSHADE
 - 6. WOODGRAIN PLASTIC SERIES SUMNER WHEAT CFB 400000
 - 7. CFR PANEL - COLOR: TRD
 - 8. CFR PANEL - 500 7000 WALL STRIPSET
 - 9. CFR PANEL - 500 8000 BLACK METAL
 - 10. METAL BEAMS - VERTICAL STANDING SEAM FINISH: 500 7000 ALUMINUM SLASH METAL
 - 11. METAL BEAMS - 1 PEE-RATED COMPOSITE METAL PANEL COLOR: TRD
 - 12. METAL COPING (AT ROOF LINE)
 - 13. METAL COPING 2
 - 14. METAL WALKING

- EXTERIOR ELEVATION NOTES**
1. SEE DRAWING SHEETS A502R FOR WINDOW HEAD, JAMB AND SILL DETAILS.
 2. SEE A502R ASK FOR EXTERIOR WALL DETAILS.
 3. ALL OPENINGS AT EXTERIOR WALLS ARE FINISHED TO EXTERIOR FACE OF WINDOW OR DOOR FRAME.
 4. WINDOW FINISH SHALL BE CENTER OF STUD AT FINISH WALLS INTERIOR TO WINDOW.
 5. SEE SHEET A501 FOR INTERIOR AND EXTERIOR WALL FINISH.
 6. EXPANSION JOINTS REQUIRED AT EXTERIOR WALL FINISH TO BE INCORPORATED INTO FINISH OF STUD AT FINISH WALLS INTERIOR TO WINDOW.
 7. ALL WINDOWS ARE TO HAVE STORESILLS.
 8. FOR VERTICAL JOINTS OF PRECAST MATERIALS CONTACT ARCHITECT.
 9. COORDINATE WITH LANSBROS DETAILS ON SHEETS A501 THROUGH A504.
 10. FINISH ELEVATIONS FOR FINISH OF STUD ARE TO BE USED FOR ARCHITECTURAL PLANS.
 11. FINISH ELEVATIONS FOR FINISH OF STUD ARE TO BE USED FOR ARCHITECTURAL PLANS.
 12. FINISH ELEVATIONS FOR FINISH OF STUD ARE TO BE USED FOR ARCHITECTURAL PLANS.
 13. FINISH ELEVATIONS FOR FINISH OF STUD ARE TO BE USED FOR ARCHITECTURAL PLANS.
 14. FINISH ELEVATIONS FOR FINISH OF STUD ARE TO BE USED FOR ARCHITECTURAL PLANS.



EXTERIOR FACADE PERCENTAGE - WEIR 2

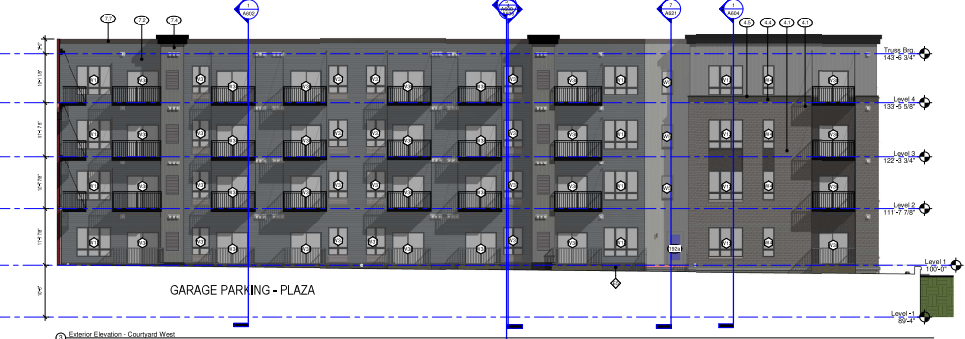
GLASS	434 SF	37%
CFB	362 SF	31%
CFR	97 SF	8%
METAL	140 SF	12%
TOTAL	1,033 SF	

EXTERIOR FACADE PERCENTAGE - COURTYARD WEST

GLASS	770 SF	19%
GLASS	2,544 SF	64%
CFB	2,114 SF	54%
METAL	1,049 SF	27%
TOTAL	6,477 SF	

EXTERIOR FACADE PERCENTAGE - COURTYARD EAST

GLASS	762 SF	14%
GLASS	3,819 SF	69%
CFB	4,485 SF	81%
METAL	1,022 SF	19%
TOTAL	10,088 SF	



KAS WILSON ARCHITECTS
1301 American Blvd E
Suite 100
Bloomington, MN 55405
Tel: 612-878-6600
www.kaswilson.com

Client/Contractor:
SKDM Engineers
6127 Lake Brown Drive,
Suite 700
Minneapolis, MN 55403
P: 763-843-0450

Landscape:
CALIX
475 Courtyard Ave N,
Suite 207
Saint Paul, MN 55104

MEP:
C&T Thomas Associates Inc.
4215 White Bear Pkwy #100
Saint Paul, MN 55110
P: 651-428-2649

Interior Designer:
Kas Wilson Architects

Project Number: 19018
Date: 12/12/2018

DESIGNED BY: KAS WILSON
CHECKED BY: KAS WILSON
DATE: 12/12/2018

PROJECT NO.: 19018
DATE: 12/12/2018

PROJECT NO.: 19018
DATE: 12/12/2018

Project Name: West Side Flats IIIA
1000 West Side Flats IIIA LLC
1000 West Side Flats IIIA LLC
1000 West Side Flats IIIA LLC

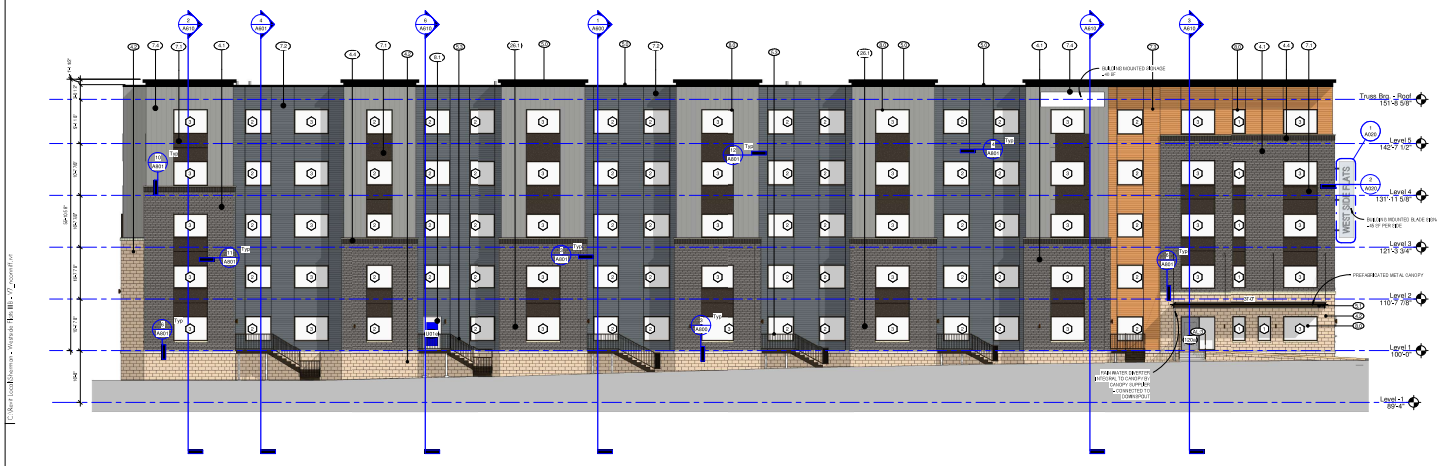
Project No.: 19018
Date: 12/12/2018

Project Name: West Side Flats IIIA
1000 West Side Flats IIIA LLC
1000 West Side Flats IIIA LLC
1000 West Side Flats IIIA LLC

Project No.: 19018
Date: 12/12/2018

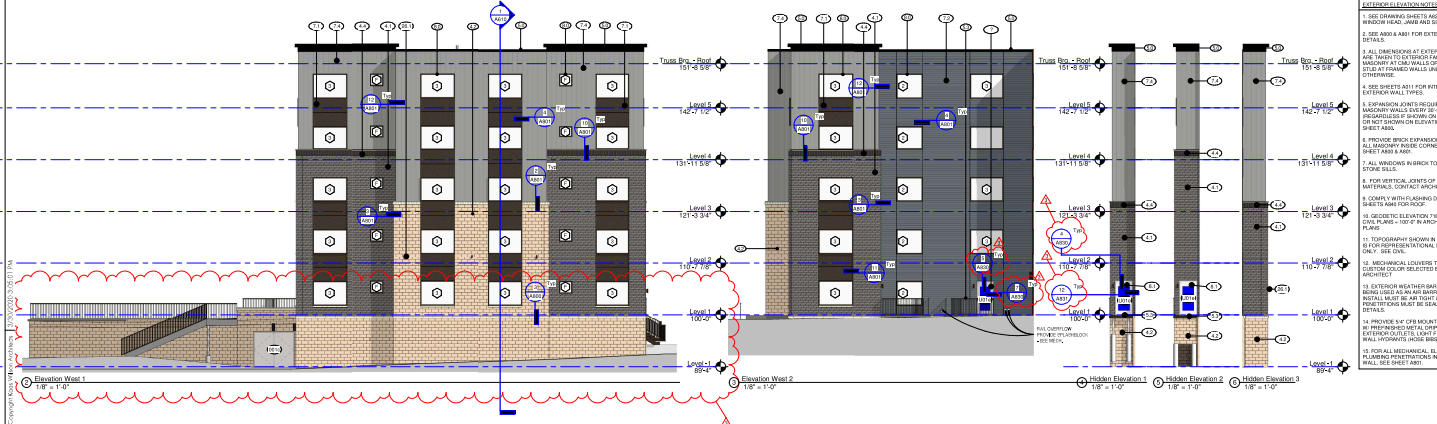
Project Name: West Side Flats IIIA
1000 West Side Flats IIIA LLC
1000 West Side Flats IIIA LLC
1000 West Side Flats IIIA LLC

Exterior Elevations
As Indicated
A502



EXTERIOR MATERIAL TABLE

MASONRY	FORMS
① BRICK VENEER - COLOR TRB - PLANNING BOARD	① CFR PANEL SING. - COLOR TRB
② CONC. MASSWORK UNIT - BRUNT FAC - COLOR TRB	② CFR LIP SING. - ② BRUNTS - COLOR TRB
③ BRICK VENEER - COLOR TRB - SOLIDER COURSE	③ CFR LIP SING. - ③ EXPOSURE - COLOR WOODSTONE
METALS	FINISHES
④ PRE-PAINTED GALV. W/ENAMEL - COLOR TRB	④ METAL SING. - PIRESTONE - DELTA CONCEALED
⑤ METAL FRAMING - COLOR TRB	④ FINISH WALL PANELS - ④ EXPOSURE - COLOR TRB
⑥ PRE-PAINTED ALUMINUM W/PAK/SEAL - COLOR TRB	OPENINGS
⑦	① ⑧ ⑨ ⑩
⑧	① ⑧ ⑨ ⑩
⑨	① ⑧ ⑨ ⑩
⑩	① ⑧ ⑨ ⑩
⑪	① ⑧ ⑨ ⑩
⑫	① ⑧ ⑨ ⑩
⑬	① ⑧ ⑨ ⑩
⑭	① ⑧ ⑨ ⑩
⑮	① ⑧ ⑨ ⑩
⑯	① ⑧ ⑨ ⑩
⑰	① ⑧ ⑨ ⑩
⑱	① ⑧ ⑨ ⑩
⑲	① ⑧ ⑨ ⑩
⑳	① ⑧ ⑨ ⑩
㉑	① ⑧ ⑨ ⑩
㉒	① ⑧ ⑨ ⑩
㉓	① ⑧ ⑨ ⑩
㉔	① ⑧ ⑨ ⑩
㉕	① ⑧ ⑨ ⑩
㉖	① ⑧ ⑨ ⑩
㉗	① ⑧ ⑨ ⑩
㉘	① ⑧ ⑨ ⑩
㉙	① ⑧ ⑨ ⑩
㉚	① ⑧ ⑨ ⑩
㉛	① ⑧ ⑨ ⑩
㉜	① ⑧ ⑨ ⑩
㉝	① ⑧ ⑨ ⑩
㉞	① ⑧ ⑨ ⑩
㉟	① ⑧ ⑨ ⑩
㊱	① ⑧ ⑨ ⑩
㊲	① ⑧ ⑨ ⑩
㊳	① ⑧ ⑨ ⑩
㊴	① ⑧ ⑨ ⑩
㊵	① ⑧ ⑨ ⑩
㊶	① ⑧ ⑨ ⑩
㊷	① ⑧ ⑨ ⑩
㊸	① ⑧ ⑨ ⑩
㊹	① ⑧ ⑨ ⑩
㊺	① ⑧ ⑨ ⑩
㊻	① ⑧ ⑨ ⑩
㊼	① ⑧ ⑨ ⑩
㊽	① ⑧ ⑨ ⑩
㊾	① ⑧ ⑨ ⑩
㊿	① ⑧ ⑨ ⑩
Ⓝ	① ⑧ ⑨ ⑩
Ⓞ	① ⑧ ⑨ ⑩
Ⓟ	① ⑧ ⑨ ⑩
Ⓠ	① ⑧ ⑨ ⑩
Ⓡ	① ⑧ ⑨ ⑩
Ⓢ	① ⑧ ⑨ ⑩
Ⓣ	① ⑧ ⑨ ⑩
Ⓤ	① ⑧ ⑨ ⑩
Ⓥ	① ⑧ ⑨ ⑩
Ⓦ	① ⑧ ⑨ ⑩
Ⓧ	① ⑧ ⑨ ⑩
Ⓨ	① ⑧ ⑨ ⑩
Ⓩ	① ⑧ ⑨ ⑩
ⓐ	① ⑧ ⑨ ⑩
ⓑ	① ⑧ ⑨ ⑩
ⓒ	① ⑧ ⑨ ⑩
ⓓ	① ⑧ ⑨ ⑩
ⓔ	① ⑧ ⑨ ⑩
ⓕ	① ⑧ ⑨ ⑩
ⓖ	① ⑧ ⑨ ⑩
ⓗ	① ⑧ ⑨ ⑩
Ⓣ	① ⑧ ⑨ ⑩
Ⓤ	① ⑧ ⑨ ⑩
Ⓥ	① ⑧ ⑨ ⑩
Ⓦ	① ⑧ ⑨ ⑩
Ⓧ	① ⑧ ⑨ ⑩
Ⓨ	① ⑧ ⑨ ⑩
Ⓩ	① ⑧ ⑨ ⑩
ⓐ	① ⑧ ⑨ ⑩
ⓑ	① ⑧ ⑨ ⑩
ⓒ	① ⑧ ⑨ ⑩
ⓓ	① ⑧ ⑨ ⑩
ⓔ	① ⑧ ⑨ ⑩
ⓕ	① ⑧ ⑨ ⑩
ⓖ	① ⑧ ⑨ ⑩
ⓗ	① ⑧ ⑨ ⑩
Ⓣ	① ⑧ ⑨ ⑩
Ⓤ	① ⑧ ⑨ ⑩
Ⓥ	① ⑧ ⑨ ⑩
Ⓦ	① ⑧ ⑨ ⑩
Ⓧ	① ⑧ ⑨ ⑩
Ⓨ	① ⑧ ⑨ ⑩
Ⓩ	① ⑧ ⑨ ⑩
ⓐ	① ⑧ ⑨ ⑩
ⓑ	① ⑧ ⑨ ⑩
ⓒ	① ⑧ ⑨ ⑩
ⓓ	① ⑧ ⑨ ⑩
ⓔ	① ⑧ ⑨ ⑩
ⓕ	① ⑧ ⑨ ⑩
ⓖ	① ⑧ ⑨ ⑩
ⓗ	① ⑧ ⑨ ⑩
Ⓣ	① ⑧ ⑨ ⑩
Ⓤ	① ⑧ ⑨ ⑩
Ⓥ	① ⑧ ⑨ ⑩
Ⓦ	① ⑧ ⑨ ⑩
Ⓧ	① ⑧ ⑨ ⑩
Ⓨ	① ⑧ ⑨ ⑩
Ⓩ	① ⑧ ⑨ ⑩
ⓐ	① ⑧ ⑨ ⑩
ⓑ	① ⑧ ⑨ ⑩
ⓒ	① ⑧ ⑨ ⑩
ⓓ	① ⑧ ⑨ ⑩
ⓔ	① ⑧ ⑨ ⑩
ⓕ	① ⑧ ⑨ ⑩
ⓖ	① ⑧ ⑨ ⑩
ⓗ	① ⑧ ⑨ ⑩
Ⓣ	① ⑧ ⑨ ⑩
Ⓤ	① ⑧ ⑨ ⑩
Ⓥ	① ⑧ ⑨ ⑩
Ⓦ	① ⑧ ⑨ ⑩
Ⓧ	① ⑧ ⑨ ⑩
Ⓨ	① ⑧ ⑨ ⑩
Ⓩ	① ⑧ ⑨ ⑩
ⓐ	① ⑧ ⑨ ⑩
ⓑ	① ⑧ ⑨ ⑩
ⓒ	① ⑧ ⑨ ⑩
ⓓ	① ⑧ ⑨ ⑩
ⓔ	① ⑧ ⑨ ⑩
ⓕ	① ⑧ ⑨ ⑩
ⓖ	① ⑧ ⑨ ⑩
ⓗ	① ⑧ ⑨ ⑩
Ⓣ	① ⑧ ⑨ ⑩
Ⓤ	① ⑧ ⑨ ⑩
Ⓥ	① ⑧ ⑨ ⑩
Ⓦ	① ⑧ ⑨ ⑩
Ⓧ	① ⑧ ⑨ ⑩
Ⓨ	① ⑧ ⑨ ⑩
Ⓩ	① ⑧ ⑨ ⑩
ⓐ	① ⑧ ⑨ ⑩
ⓑ	① ⑧ ⑨ ⑩
ⓒ	① ⑧ ⑨ ⑩
ⓓ	① ⑧ ⑨ ⑩
ⓔ	① ⑧ ⑨ ⑩
ⓕ	① ⑧ ⑨ ⑩
ⓖ	① ⑧ ⑨ ⑩
ⓗ	① ⑧ ⑨ ⑩
Ⓣ	① ⑧ ⑨ ⑩
Ⓤ	① ⑧ ⑨ ⑩
Ⓥ	① ⑧ ⑨ ⑩
Ⓦ	① ⑧ ⑨ ⑩
Ⓧ	① ⑧ ⑨ ⑩
Ⓨ	① ⑧ ⑨ ⑩
Ⓩ	① ⑧ ⑨ ⑩
ⓐ	① ⑧ ⑨ ⑩
ⓑ	① ⑧ ⑨ ⑩
ⓒ	① ⑧ ⑨ ⑩
ⓓ	① ⑧ ⑨ ⑩
ⓔ	① ⑧ ⑨ ⑩
ⓕ	① ⑧ ⑨ ⑩
ⓖ	① ⑧ ⑨ ⑩
ⓗ	① ⑧ ⑨ ⑩
Ⓣ	① ⑧ ⑨ ⑩
Ⓤ	① ⑧ ⑨ ⑩
Ⓥ	① ⑧ ⑨ ⑩
Ⓦ	① ⑧ ⑨ ⑩
Ⓧ	① ⑧ ⑨ ⑩
Ⓨ	① ⑧ ⑨ ⑩
Ⓩ	① ⑧ ⑨ ⑩
ⓐ	① ⑧ ⑨ ⑩
ⓑ	① ⑧ ⑨ ⑩
ⓒ	① ⑧ ⑨ ⑩
ⓓ	① ⑧ ⑨ ⑩
ⓔ	① ⑧ ⑨ ⑩
ⓕ	① ⑧ ⑨ ⑩
ⓖ	① ⑧ ⑨ ⑩
ⓗ	① ⑧ ⑨ ⑩
Ⓣ	① ⑧ ⑨ ⑩
Ⓤ	① ⑧ ⑨ ⑩
Ⓥ	① ⑧ ⑨ ⑩
Ⓦ	① ⑧ ⑨ ⑩
Ⓧ	① ⑧ ⑨ ⑩
Ⓨ	① ⑧ ⑨ ⑩
Ⓩ	① ⑧ ⑨ ⑩
ⓐ	① ⑧ ⑨ ⑩
ⓑ	① ⑧ ⑨ ⑩
ⓒ	① ⑧ ⑨ ⑩
ⓓ	① ⑧ ⑨ ⑩
ⓔ	① ⑧ ⑨ ⑩
ⓕ	① ⑧ ⑨ ⑩
ⓖ	① ⑧ ⑨ ⑩
ⓗ	① ⑧ ⑨ ⑩
Ⓣ	① ⑧ ⑨ ⑩
Ⓤ	① ⑧ ⑨ ⑩
Ⓥ	① ⑧ ⑨ ⑩
Ⓦ	① ⑧ ⑨ ⑩
Ⓧ	① ⑧ ⑨ ⑩
Ⓨ	① ⑧ ⑨ ⑩
Ⓩ	① ⑧ ⑨ ⑩
ⓐ	① ⑧ ⑨ ⑩
ⓑ	① ⑧ ⑨ ⑩
ⓒ	① ⑧ ⑨ ⑩
ⓓ	① ⑧ ⑨ ⑩
ⓔ	① ⑧ ⑨ ⑩
ⓕ	① ⑧ ⑨ ⑩
ⓖ	① ⑧ ⑨ ⑩
ⓗ	① ⑧ ⑨ ⑩
Ⓣ	① ⑧ ⑨ ⑩
Ⓤ	① ⑧ ⑨ ⑩
Ⓥ	① ⑧ ⑨ ⑩
Ⓦ	① ⑧ ⑨ ⑩
Ⓧ	① ⑧ ⑨ ⑩
Ⓨ	① ⑧ ⑨ ⑩
Ⓩ	① ⑧ ⑨ ⑩
ⓐ	① ⑧ ⑨ ⑩
ⓑ	① ⑧ ⑨ ⑩
ⓒ	① ⑧ ⑨ ⑩
ⓓ	① ⑧ ⑨ ⑩
ⓔ	① ⑧ ⑨ ⑩
ⓕ	① ⑧ ⑨ ⑩
ⓖ	① ⑧ ⑨ ⑩
ⓗ	① ⑧ ⑨ ⑩
Ⓣ	① ⑧ ⑨ ⑩
Ⓤ	① ⑧ ⑨ ⑩
Ⓥ	① ⑧ ⑨ ⑩
Ⓦ	① ⑧ ⑨ ⑩
Ⓧ	① ⑧ ⑨ ⑩
Ⓨ	① ⑧ ⑨ ⑩
Ⓩ	① ⑧ ⑨ ⑩



EXTERIOR ELEVATION NOTES

- SEE DRAWING SHEETS AND COORDINATING SHEETS FOR WINDOW AND WALL DETAILS.
- SEE A500 & A501 FOR EXTERIOR WALL DETAILS.
- ALL DIMENSIONS AT EXTERIOR WALLS SHALL BE TO THE FACE OF THE MATERIAL UNLESS OTHERWISE SPECIFIED.
- SEE SHEETS A511 FOR EXTERIOR AND INTERIOR WALL TYPES.
- EXPANSION Joints REQUIRED AT ALL VERTICAL WALL JOINTS, AT ROOF EAVES, AT WINDOW AND DOOR THRESHOLS, AND AT ALL OTHER DISCONTINUITIES. SEE SHEET A501 FOR DETAILS.
- EXPANSION JOINTS SHALL BE FIBERGLASS FIBER REINFORCED POLYESTER CONCRETE OR BRICK.
- ALL WINDOW JOINTS TO HAVE EPDM GASKETS.
- FOR VERTICAL JOINTS OF DISSEMBLY MATERIALS, CONTACT ARCHITECT.
- CONCRETE WITH AGGREGATE DETAILS ON SHEETS A501 FOR ROOF.
- CONCRETE WITH AGGREGATE DETAILS ON SHEETS A501 FOR ROOF.
- TOPOGRAPHY SHOWN IN ELEVATIONS IS FOR INFORMATIONAL PURPOSES ONLY. SEE D5.
- MECHANICAL, ELECTRICAL, AND PLUMBING (MEEP) SHALL BE INSTALLED PER ALL APPLICABLE CODES AND REGULATIONS. SEE SHEET A501.
- PROVIDE 5/8" CFR ANCHORS TO ALL EXTERIOR WALLS AT ALL LEVELS PER ALL APPLICABLE CODES AND REGULATIONS. SEE SHEET A501.
- FOR ALL MECHANICAL, ELECTRICAL, AND PLUMBING INSTALLATIONS IN EXTERIOR WALLS, SEE SHEET A501.

West Side Flats - Phase IIB

NSF IIB Limited Partnership

225 West Hennepin Avenue, Suite 1500
Minneapolis, MN 55402

1921 Hennepin Blvd, E
Suite 100
Minneapolis, MN 55445
P: (612) 474-3500
www.nsfib.com

Client Engineer:
NSF Engineers
1300 E Lake Street Drive,
Suite 200
P: 651.334.5465

Architect:
C&J Design Group
1581 W Broadway Ave.
St. Paul, MN 55110
P: 651.334.5465

Structural Engineer:
NSF Engineers
1300 E Lake Street Drive,
Suite 200
P: 651.334.5465

MEP Engineer:
Caro Thomas Associates, Inc.
4712 White Bear River #100
St. Paul, MN 55110
P: 651.693.5285

Interior Design:
Sloan Wood Architects
Interior Design Department

Phase Home Consultant:
The Home Depot
20 North Park Street
Minneapolis, MN 55451
P: 612.536.7586

General Contractor:
Trans Components
1305 Park Ave. S.
Minneapolis, MN 55443
P: 612.536.8000

Project Number: 1605

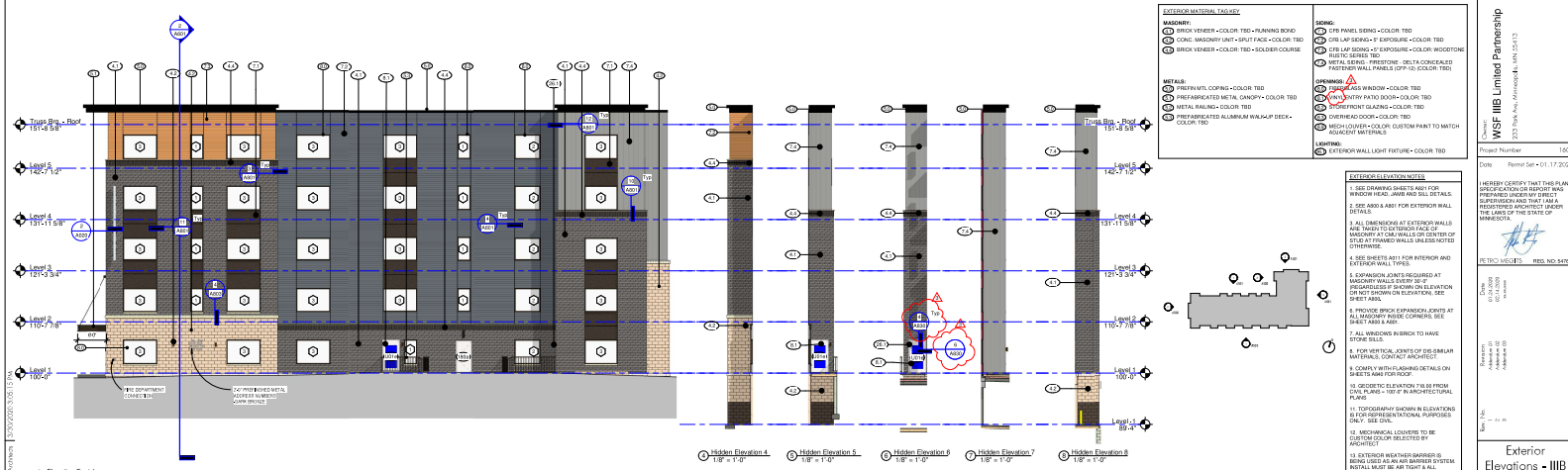
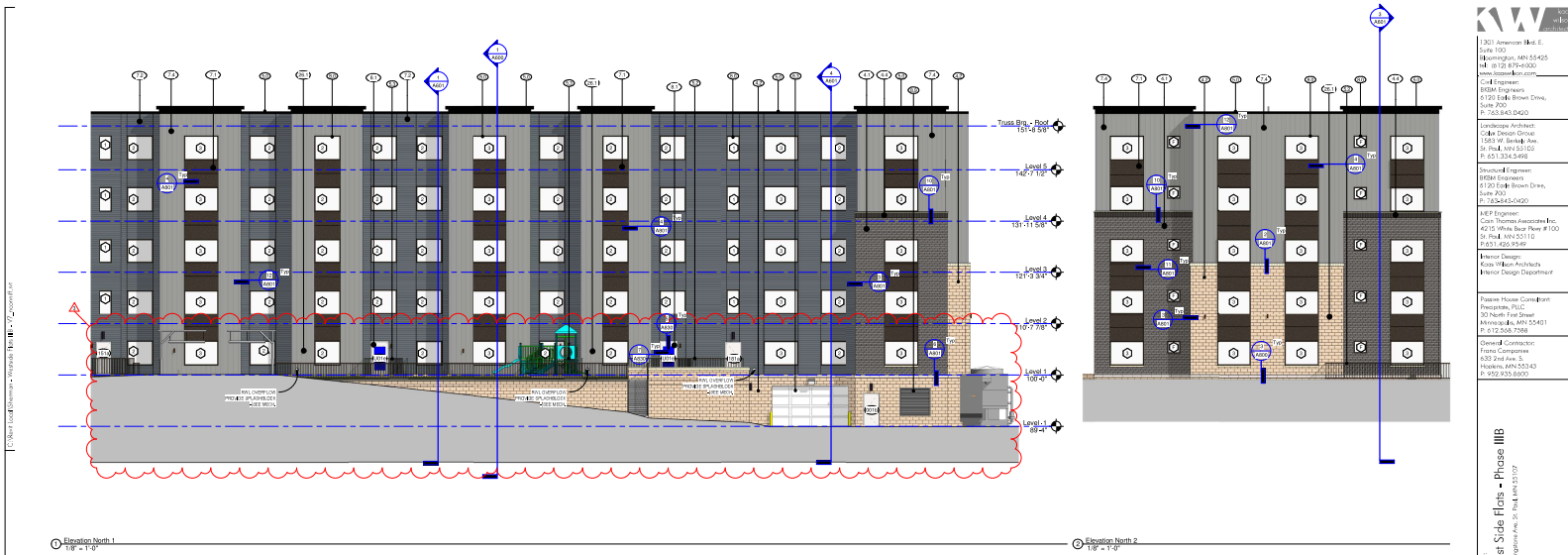
Date: 08/24/2017

Sheet: 1 of 12

Revision: 01

Notes:

As indicated
A500



EXTERIOR MATERIAL TAGKEY

MASONRY

- BRICK VENEER - COLOR TRD - RUNNING BOND
- CONC. MASONRY UNIT - BRICK FACE - COLOR TRD
- BRICK VENEER - COLOR TRD - SOLDIER COURSE

METAL

- PREPARED METAL COILING - COLOR TRD
- PREPARED METAL GANTRY - COLOR TRD
- METAL FINISH - COLOR TRD
- PREPARED ALUMINUM W/ALUM. DECK - COLOR TRD

WOOD

- CPE PANEL SIDING - COLOR TRD
- CPE LAP SIDING - EXPOSURE - COLOR TRD
- CPE LAP SIDING - EXPOSURE - COLOR WOODGROOVE RUSTIC SERIES TRD
- METAL SIDING - PRESTONE - SETA COMPOSITE RUSTIC WALL PANELS (PT-10) - COLOR TRD

GLASS

- SPRINKLER WINDOW - COLOR TRD
- FRY PATIO DOOR - COLOR TRD
- DIFFERENT GLAZING - COLOR TRD
- OVERHEAD DOOR - COLOR TRD
- MESH LOUVER - COLOR - CUSTOM PAINT TO MATCH ROUGHNESS FINISHES

FINISH

- EXTERIOR WALL LIGHT FIXTURE - COLOR TRD

INTERIOR ELEVATION NOTE

- SEE DRAWING SHEET FOR WINDOW, DOOR AND SILL DETAILS.
- SEE A501 AND A502 FOR EXTERIOR WALL DETAILS.
- ALL DIMENSIONS AT EXTERIOR WALLS ARE FROM FACE UNLESS OTHERWISE NOTED. FINISH AT FACE WALLS TO BE STUDY AT FINISH WALLS UNLESS NOTED OTHERWISE.
- SEE SHEETS A501 FOR EXTERIOR AND EXTERIOR WALL TYPES.
- EXPANSION JOINTS REQUIRED AT MASONRY WALLS SHALL BE INDICATED BY SHOWN ON ELEVATION OR NOTED DOWN ON OTHER SHEET A501.
- PROVIDE BRICK FRAMING JOISTS AT ALL MASONRY CORNERS, SEE SHEET A501.
- ALL WINDOW FINISH TO HAVE SPHERE FINISH.
- FOR VERTICAL JOINTS OF SIMILAR MATERIALS, CONTACT ARCHITECT.
- COMPLY WITH FLASHING DETAILS ON SHEETS A501 FOR ROOF.
- ORIENTIC ELEVATION TO BE FROM EXTERIOR UNLESS OTHERWISE NOTED.
- FORWARDER DRAWING ELEVATIONS IS FOR INFORMATIONAL PURPOSES ONLY. SEE A501.
- MECHANICAL LEAVES TO BE CUSTOM DOOR SELECTED BY ARCHITECT.
- EXTERIOR WINDOW GLASS IS BEING USED AS AN AIR BARRIER SYSTEM. INSTALLATION MUST BE AS NOTED. ALL WINDOW FINISHES MUST BE SEALED PER MFR DETAILS.
- PROVIDE ALL CPE MATERIALS TO BE FROM EXTERIOR UNLESS OTHERWISE NOTED.
- FOR ALL MECHANICAL, ELECTRICAL, & PLUMBING PENETRATIONS IN EXTERIOR WALL, SEE SHEET A501.

WEST SIDE FLATS - Phase IIB

NSW IIB Limited Partnership

Project Number: 1600
 Date: Revised - 01/17/2020

DESIGNED BY: [Signature]
 CHECKED BY: [Signature]
 APPROVED BY: [Signature]

Exterior Elevations - IIB

As indicated A501

CLIENT INFORMATION

1301 University Ave., Suite 100
 St. Paul, MN 55102
 Phone: 612.338.7586
 Fax: 612.338.7586

DESIGNER INFORMATION

1301 University Ave., Suite 100
 St. Paul, MN 55102
 Phone: 612.338.7586
 Fax: 612.338.7586

ARCHITECT INFORMATION

1301 University Ave., Suite 100
 St. Paul, MN 55102
 Phone: 612.338.7586
 Fax: 612.338.7586

ENGINEER INFORMATION

1301 University Ave., Suite 100
 St. Paul, MN 55102
 Phone: 612.338.7586
 Fax: 612.338.7586

MEP ENGINEER INFORMATION

1301 University Ave., Suite 100
 St. Paul, MN 55102
 Phone: 612.338.7586
 Fax: 612.338.7586

STRUCTURAL ENGINEER INFORMATION

1301 University Ave., Suite 100
 St. Paul, MN 55102
 Phone: 612.338.7586
 Fax: 612.338.7586