



STPAUL.GOV

CITY OF SAINT PAUL HOUSING AND REDEVELOPMENT AUTHORITY

Large Redevelopment Site Update

July 26, 2024



SEARS

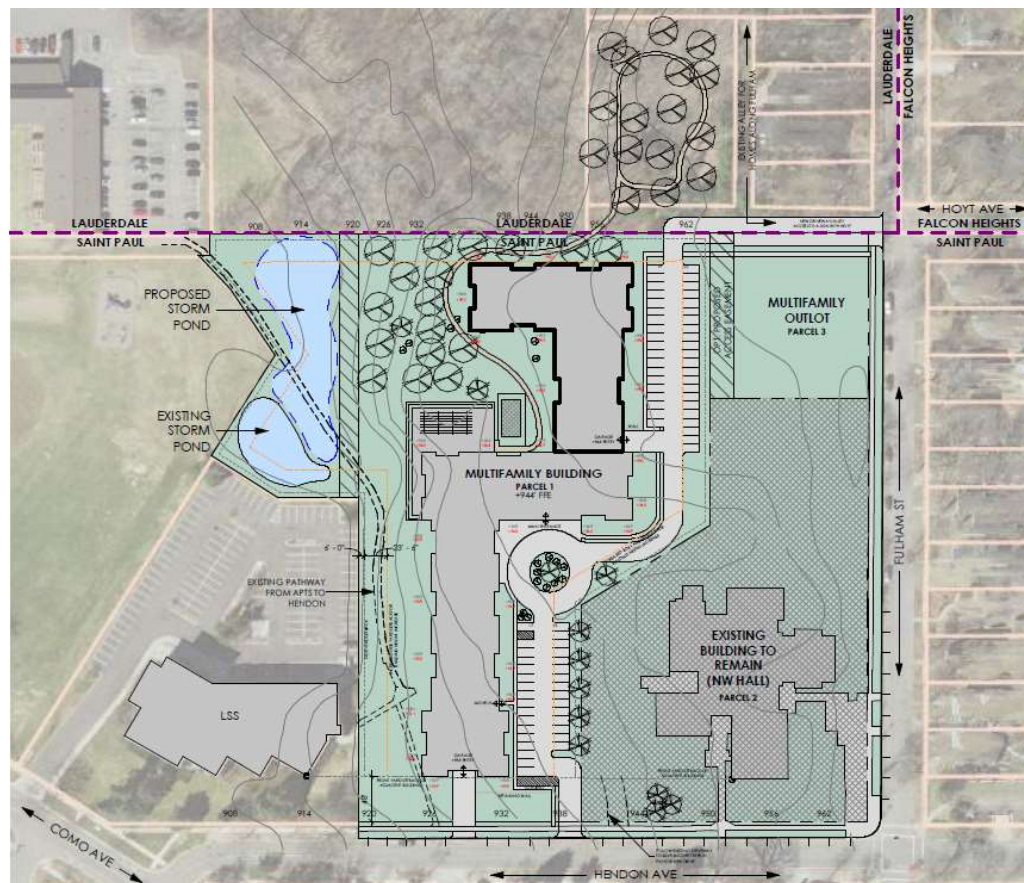
- Ward 1
- 17 acres
- In the jurisdiction of the Capitol Area Architectural and Planning Board (CAAPB)





LUTHER SEMINARY

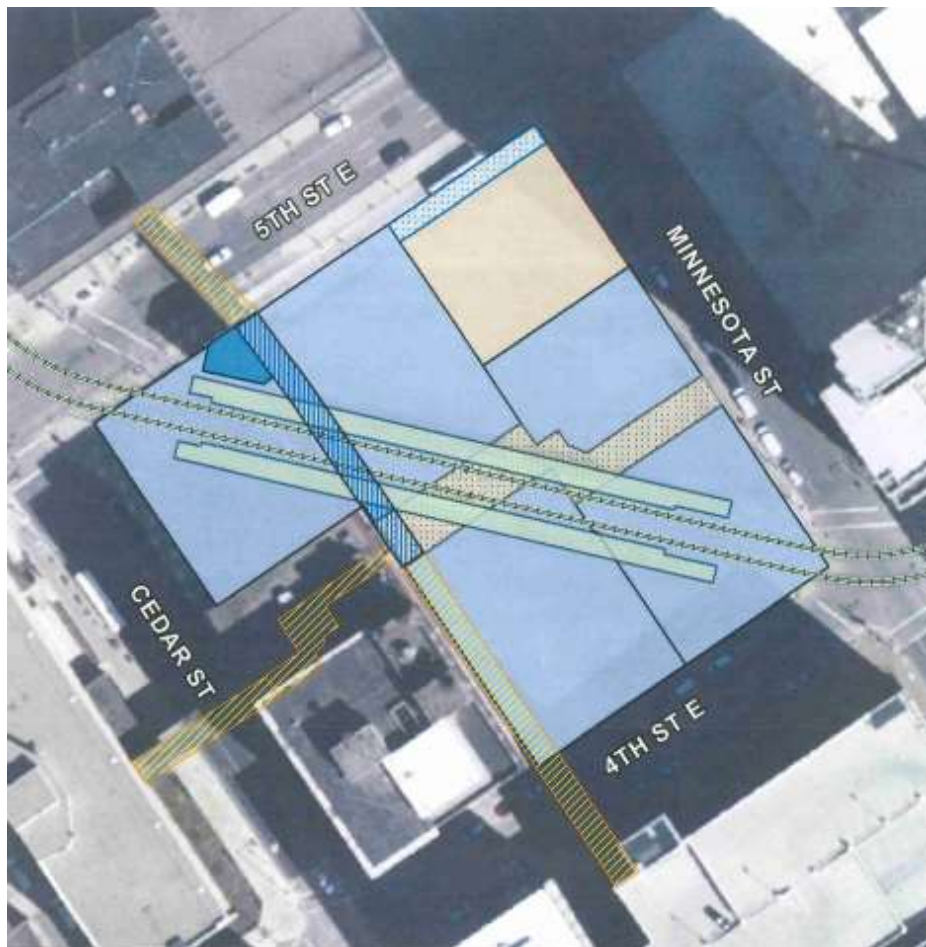
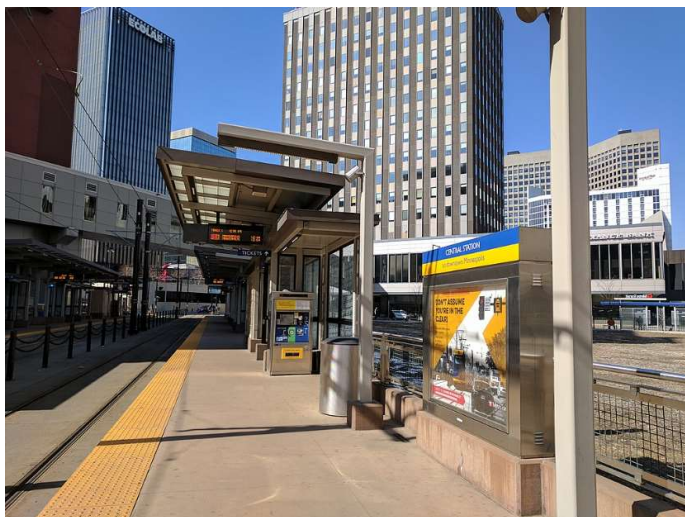
- Ward 4
- 15.5 acres





CENTRAL STATION

- Ward 2
- 1 City Block





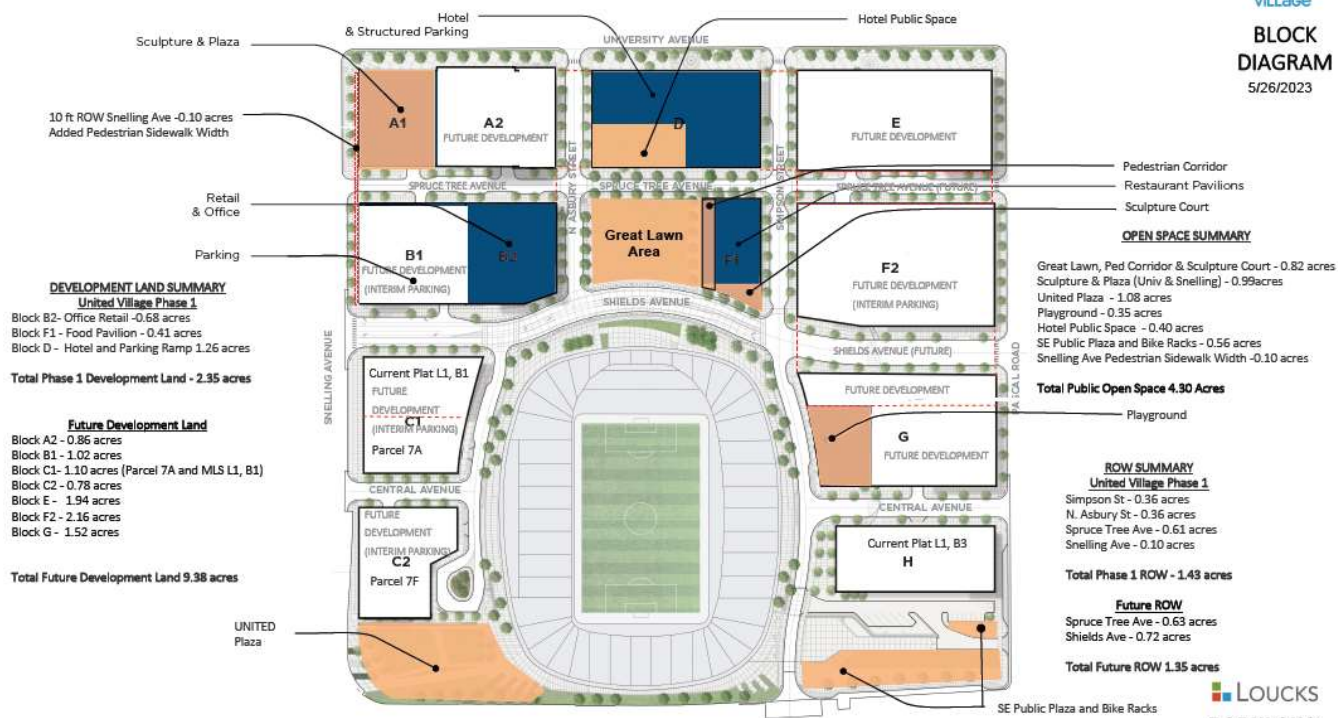
RIVERSEDGE

- Ward 2
- 5 acres





- Ward 1
- 34.5 acres





HIGHLAND BRIDGE

- Ward 3
- 122 acres





Key Accomplishments to Date





Pulte Phase 2 Land



UST Ballfields



Marvella Phase Two





THE HEIGHTS

- Ward 6
- 112 acres





THE HEIGHTS



Questions?

- SEARS
- LUTHER SEMINARY
- CENTRAL STATION
- RIVERSEDGE
- UNITED VILLAGE
- HIGHLAND BRIDGE
- THE HEIGHTS



SAINT PAUL
MINNESOTA

STPAUL.GOV