

ANDERSON
DESIGN INC
612-203-1815

Project:
GROVELAND TAP
1834 ST. CLAIR AVE
ST. PAUL, MN 55105

In Progress

Consultants:

Revisions:
Description Date

Project #: 20-102
Drawn by: BA
Checked by: GH
Date: 8/16/21
Scale: As indicated

Sheet Title
FURNITURE AND
EQUIPMENT PLANS

Sheet Number
A5.1

PATIO PLAN 2/A5.1

PATIO PLAN 2/A5.1

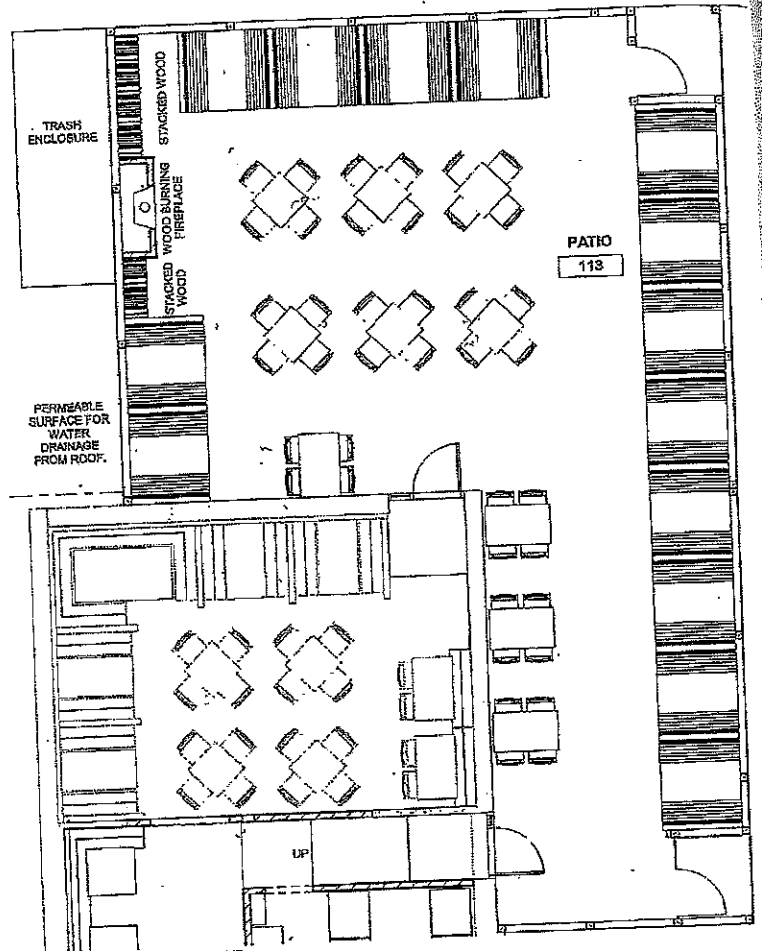
1
A5.1
MAIN LEVEL FURNITURE AND
EQUIPMENT PLAN - FOR
REFERENCE
3/16" = 1'-0"

22
19

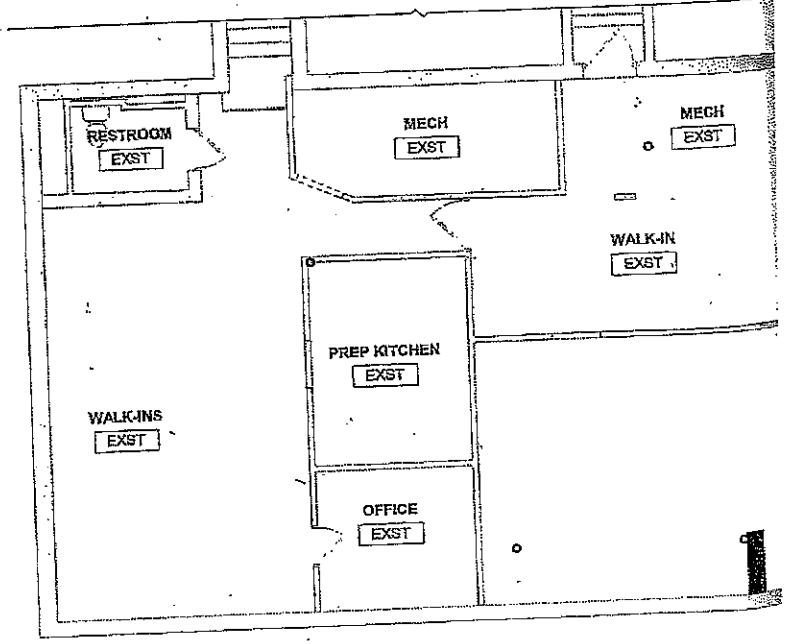
21

GENERAL FURN AND EQUIP NOTES

1. BUILT-IN CABINETRY AND COUNTER ARE BY MILLWORKER. FIELD VERIFY EXISTING CONDITIONS PRIOR TO FABRICATION. SEE SPECS FOR SHOP DRAWING SUBMITTAL REQUIREMENTS.
2. IT IS THE GENERAL CONTRACTORS RESPONSIBILITY TO VERIFY AND CONFIRM W/ VENDORS ALL EQUIPMENT AND QUANTITIES. CONFIRM THE ORDERED EQUIPMENT MATCHES EQUIPMENT PLAN AND MODEL NUMBER IN THE EQUIPMENT/FURNITURE SCHEDULE. REPORT ANY DISCREPANCIES TO OWNER'S CONSTRUCTION PROJECT MANAGER AND ARCHITECT AND VERIFY WITH ENGINEER'S DRAWINGS.
3. M.A.N.G.E.R. AND ARCHITECT AND VERIFY WITH ENGINEER'S DRAWINGS. G.C. TO SET IN PLACE ALL KITCHEN EQUIPMENT. ELECTRICAL CONTRACTOR AND PLUMBING CONTRACTOR ARE RESPONSIBLE FOR ALL FINAL CONNECTIONS TO EQUIPMENT.
4. 3" GROMMET WITH SLEEVE TYP. IN COUNTERTOP AT MONITORS, PRINTERS, ETC. G.C. TO COORDINATE EXACT LOCATION WITH OWNER. DRILL HOLE IN FIELD AFTER ALL EQUIPMENT HAS BEEN SET IN PLACE.
5. SEE LIFE SAFETY PLAN FOR ACCESSIBLE SEATING LOCATIONS.
6. SEE BAR EQUIPMENT DESIGNER DRAWINGS/ SPECS FOR BAR AND PRODUCTION EQUIPMENT INFORMATION.
7. G.C. TO FIRMLY ANCHOR ANY FURNITURE OR EQUIPMENT REQUIRED TO BE FIXED. CAULK AND SEAL TO WALLS AND FLOOR.
8. ALL BAR AND PRODUCTION EQUIPMENT IS SHOWN FOR REFERENCE. OWNER AND BAR EQUIPMENT DESIGNER ARE TO SPECIFICATIONS.
9. G.C. TO PROVIDE UTILITIES FOR ALL BAR AND PRODUCTION EQUIPMENT.



2
A5.1
PATIO FURNITURE AND EQUIPMENT PLAN - FOR REFERENCE
3/16" = 1'-0"



3
A5.1
LOWER LEVEL FURNITURE AND EQUIPMENT PLAN - FOR REFERENCE
3/16" = 1'-0"