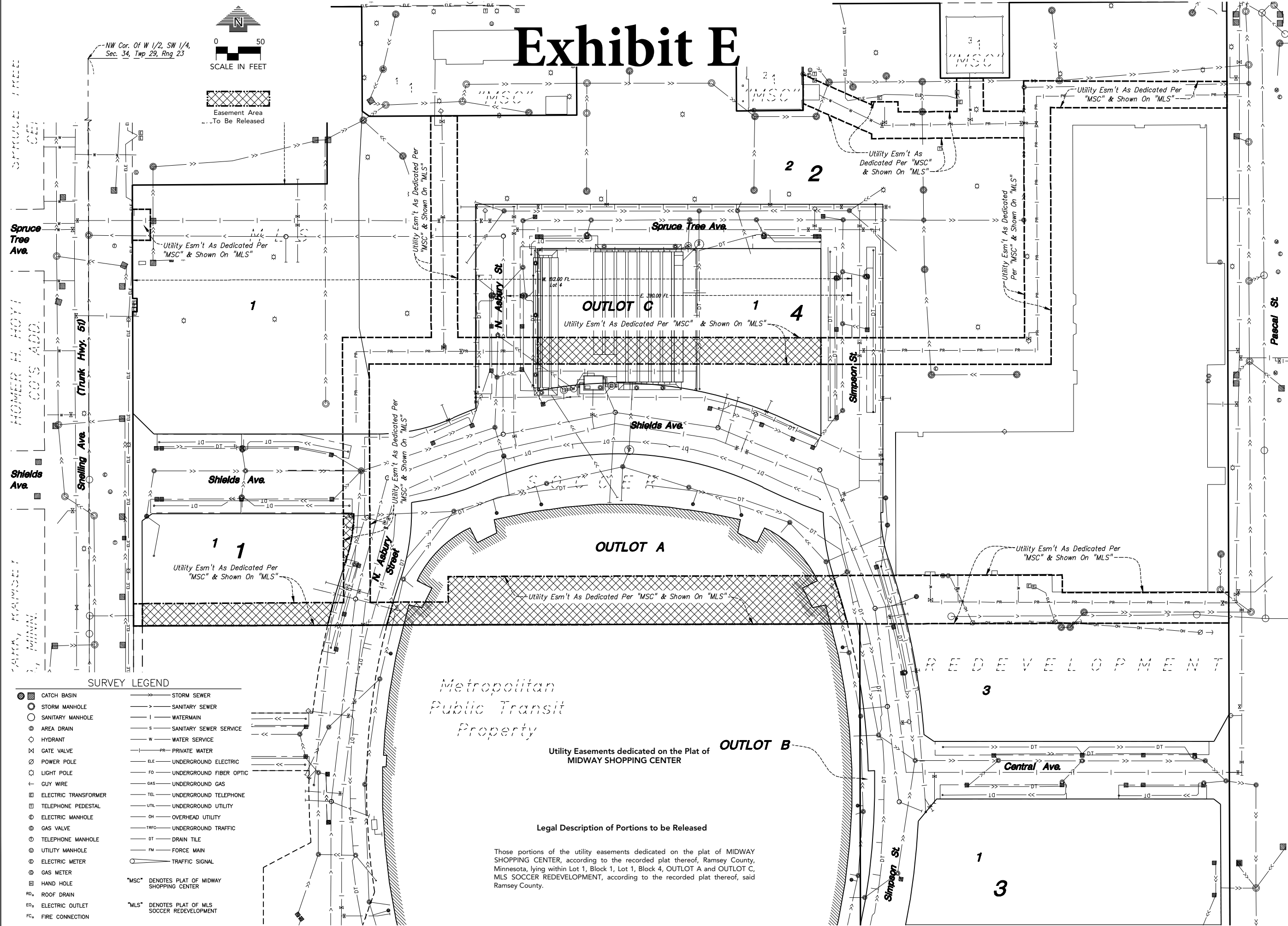
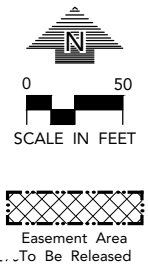


# Exhibit E



### SURVEY LEGEND

- |                        |                              |
|------------------------|------------------------------|
| ● CATCH BASIN          | — STORM SEWER                |
| ○ STORM MANHOLE        | — SANITARY SEWER             |
| ○ SANITARY MANHOLE     | — WATERMAIN                  |
| ⊕ AREA DRAIN           | — SANITARY SEWER SERVICE     |
| ⊕ HYDRANT              | — WATER SERVICE              |
| ⊕ GATE VALVE           | — PRIVATE WATER              |
| ⊕ POWER POLE           | — ELE UNDERGROUND ELECTRIC   |
| ⊕ LIGHT POLE           | — FO UNDERGROUND FIBER OPTIC |
| — GUY WIRE             | — GAS UNDERGROUND GAS        |
| ⊕ ELECTRIC TRANSFORMER | — TEL UNDERGROUND TELEPHONE  |
| ⊕ TELEPHONE PEDESTAL   | — UTIL UNDERGROUND UTILITY   |
| ⊕ ELECTRIC MANHOLE     | — OH OVERHEAD UTILITY        |
| ⊕ GAS VALVE            | — TRFC UNDERGROUND TRAFFIC   |
| ⊕ TELEPHONE MANHOLE    | — DT DRAIN TILE              |
| ⊕ UTILITY MANHOLE      | — FM FORCE MAIN              |
| ⊕ ELECTRIC METER       | — TRAF TRAFFIC SIGNAL        |
| ⊕ GAS METER            |                              |
| ⊕ HAND HOLE            |                              |
| ⊕ ROOF DRAIN           |                              |
| ⊕ ELECTRIC OUTLET      |                              |
| ⊕ FIRE CONNECTION      |                              |
- "MSC" DENOTES PLAT OF MIDWAY SHOPPING CENTER  
 "MLS" DENOTES PLAT OF MLS SOCCER REDEVELOPMENT

Metropolitan  
Public Transit  
Property

Utility Easements dedicated on the Plat of  
MIDWAY SHOPPING CENTER

### Legal Description of Portions to be Released

Those portions of the utility easements dedicated on the plat of MIDWAY SHOPPING CENTER, according to the recorded plat thereof, Ramsey County, Minnesota, lying within Lot 1, Block 1, Lot 1, Block 4, OUTLOT A and OUTLOT C, MLS SOCCER REDEVELOPMENT, according to the recorded plat thereof, said Ramsey County.

MLS SOCCER  
REDEVELOPMENT

ST. PAUL

Minnesota United FC

4050 Olson Memorial Hwy 295  
Minneapolis, MN 55422  
(763)331-8777

**LOUCKS**

PLANNING  
CIVIL ENGINEERING  
LAND SURVEYING  
LANDSCAPE ARCHITECTURE  
ENVIRONMENTAL

7200 Hemlock Lane, Suite 300  
Maple Grove, MN 55369  
763.424.5505  
www.loucksinc.com

### CADD QUALIFICATION

CADD files prepared by the Consultant for this project are instruments of the Consultant professional services for use solely with respect to this project. These CADD files shall not be used on other projects, for additions to this project, or for completion of this project by others without written approval by the Consultant. With the Consultant's approval, others may be permitted to obtain copies of the CADD drawing files for information and reference only. All intentional or unintentional revisions, additions, or deletions to these CADD files shall be made at the full risk of that party making such revisions, additions or deletions and that party shall hold harmless and indemnify the Consultant from any & all responsibilities, claims, and liabilities.

### SUBMITTAL/REVISIONS

7/6/16 DRAWING ISSUED  
3/27/19 CURRENT PLAT

### PROFESSIONAL SIGNATURE

I hereby certify that this survey, plan or report was prepared by me or under my direct supervision and that I am a duly Licensed Land Surveyor under the laws of the State of Minnesota.

*Paul J. McGinley*  
Paul J. McGinley - L.S.  
License No. 16099  
Date 7/6/16

### QUALITY CONTROL

Loucks Project No. 16-028B  
Project Lead PJM  
Drawn By SFM  
Checked By PJM  
Field Crew BS

### VICINITY MAP

EASEMENT  
RELEASE EXHIBIT  
Plat of MIDWAY  
SHOPPING  
CENTER

1 of 1