



NOVA CLASSICAL ACADEMY

Great Thought Inspiring Great Thinkers

April 25, 2016

Rebecca Noecker
Ward 2 Councilmember
310-B City Hall
15 Kellogg Blvd. W.
St. Paul, MN 55102

Dear Ms. Noecker:

Nova Classical Academy and its community want to ensure a clear picture of our neighborhood is being represented when decisions are being made regarding the Victoria Park development. It is important to keep several things in mind: we have a high volume of pedestrians of all ages as well as cars and buses, and we are doing everything we can to do our part in creating a safe environment.

The included packet outlines where our students walk, where our community members drive and park for drop-off, pick-up, and carpool, and where buses arrive and park.

What these pages do not do is show where our neighbors walk their dogs, where they and their visitors park, the community using our playgrounds and fields on evenings and weekends, Sholom Home pedestrians and visitors, and traffic during shift changes for Sholom Home and Mississippi Market. Further, the incoming park immediately adjacent will also increase pedestrian and vehicle traffic.

The proposed building and its parking solutions will directly affect the safety of our students, neighborhood residents, and visitors. Plans must be in place for speed bumps, increased school zone signage, dedicated crosswalks, and parking restrictions.

Nova Classical Academy is absolutely in favor development of our neighborhood, however we want to make sure our neighborhood remains safe and pedestrian friendly for all stakeholders.

Sincerely,

Dr. Eric Williams
Executive Director, Nova Classical Academy

Enc.

Pedestrian and Vehicle Traffic in the Victoria Park Neighborhood

What are the challenges facing Nova Classical Academy?

1. We have a high volume of pedestrians of all ages.
2. We have a high volume of cars & buses.

What are the challenges facing our entire neighborhood?

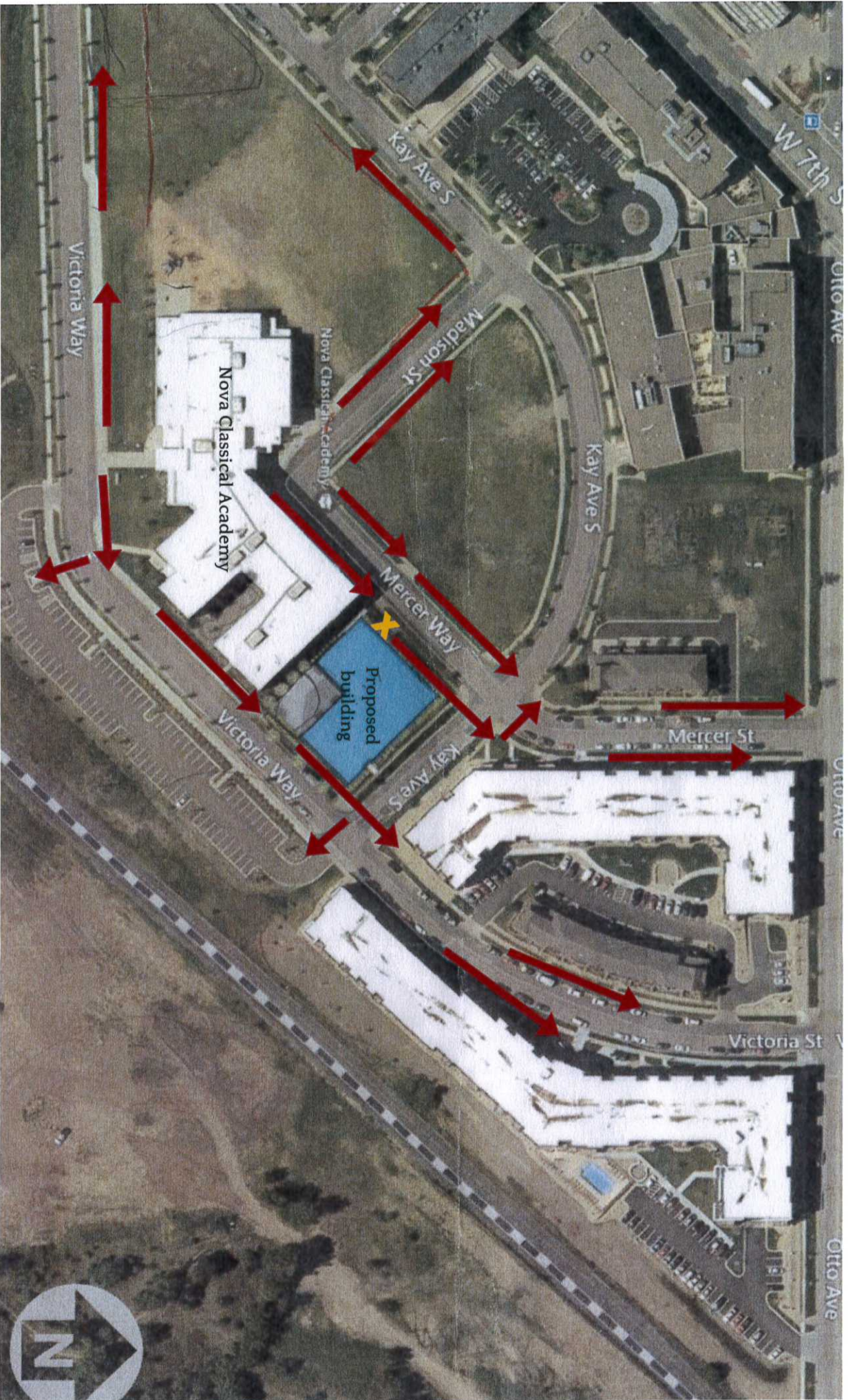
1. We have a high volume of pedestrian traffic (dog walkers, seniors, runners, bikers, future park visitors).
2. Community members use Nova's playground and fields.
3. Increased traffic during shift changes.

The following pages outline where Nova Classical Academy students walk, where our community members drive and park for pick-up, drop-off, and carpool, and where buses arrive and park.

Nova Classical Academy is absolutely in favor development of our neighborhood, however we want to make sure our neighborhood remains safe and pedestrian-friendly for all stakeholders.

Thank you for your time and consideration.



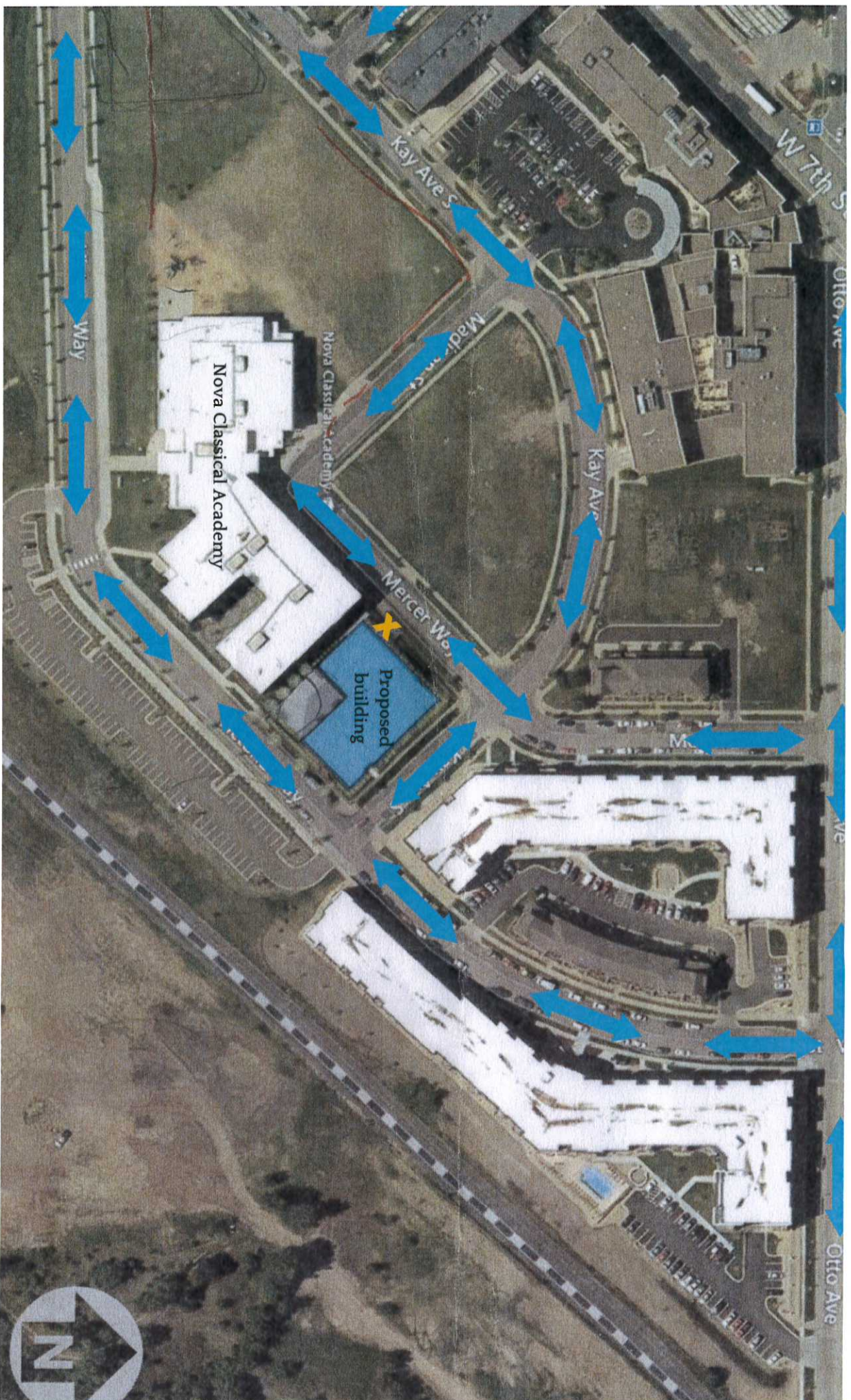


➔ Every day 921 students enter and exit through various doors in our building.

✗ Proposed parking ramp exit



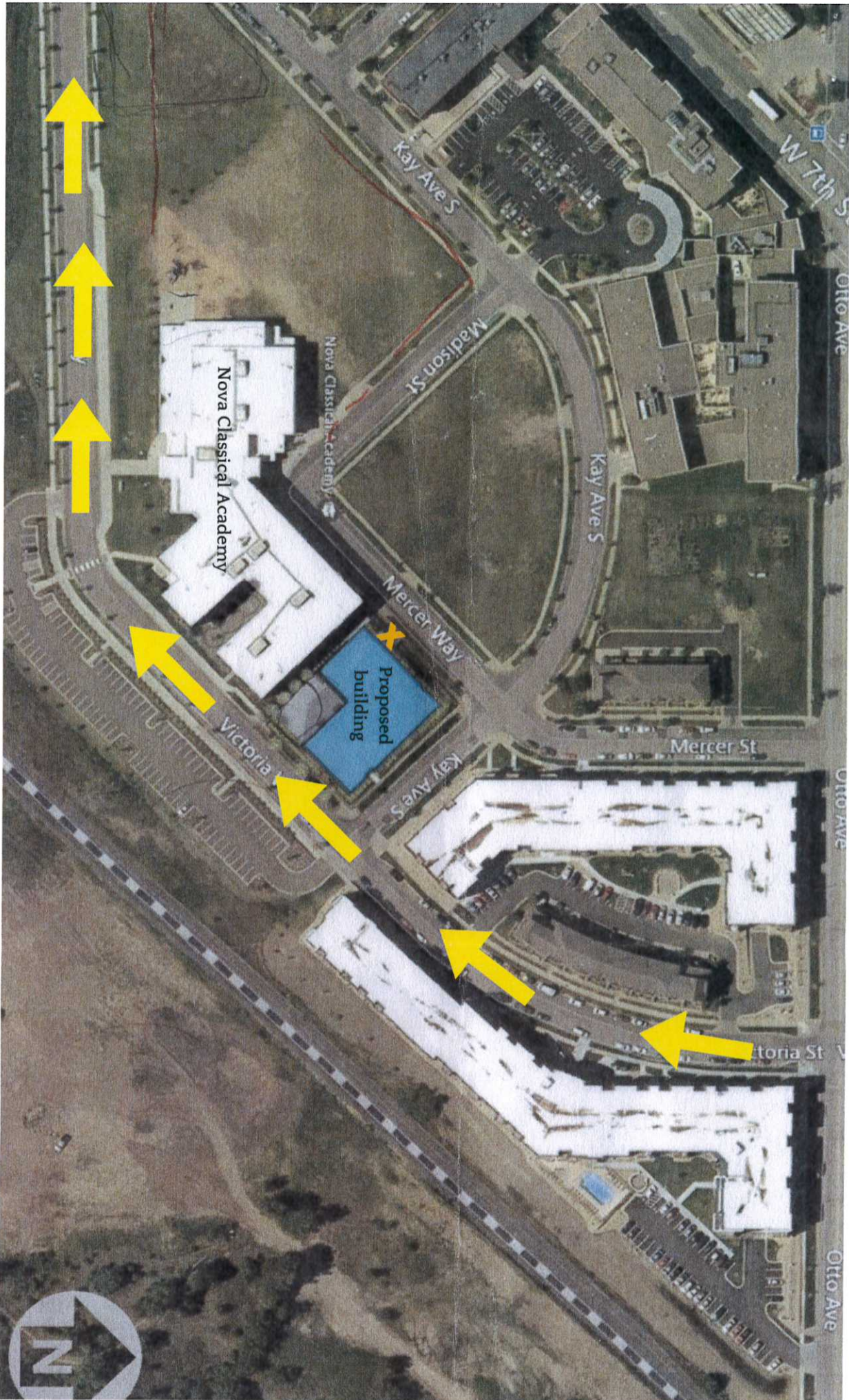
NOVA CLASSICAL ACADEMY



↔ An estimated 225 cars driving into the neighborhood to park and drop-off or pick-up their students, or to enter the carpool line.

X Proposed parking ramp exit





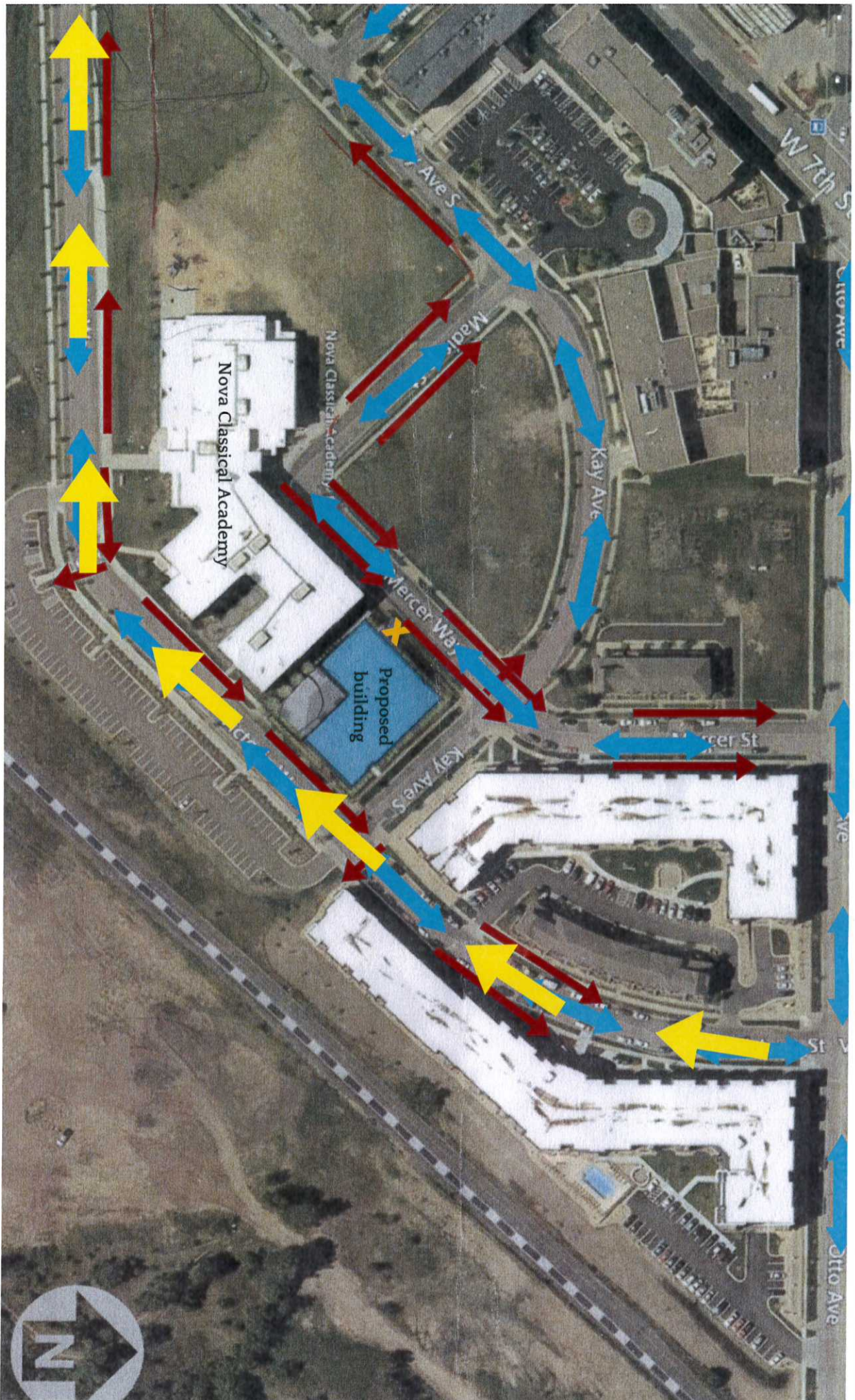
13 buses entering and parking to take 475 children to and from school.



Proposed parking ramp exit



NOVA CLASSICAL ACADEMY



 Students
  Proposed parking ramp exit

 Buses
  Cars

The cumulative effect
 illustrates clearly the dense
 usage and how safety must be a
 priority.



NOVA CLASSICAL ACADEMY

What is Nova Classical Academy doing to help?

The Nova Community recognizes our role in fostering a safe and pedestrian-friendly community.

Some examples of what we are doing to help include:

1. We provide free busing to all St. Paul students more than 2 miles from school.
2. We encourage carpooling and help facilitate the process via a distribution list.
3. We have a twenty-minute period available for drop-off and for pick-up, and incentivize early arrivals in the morning by offering breakfast. (Free to Kindergartners.)
4. We have numerous staff members posted outside each day directing pedestrian and vehicle traffic.
5. We have a structured pick-up/drop-off process, with traffic channeled one way along each side of the school.
6. The community generally treats Mercer Ave. as one-way, especially after snow.
7. Parents are reminded throughout the year to drive carefully, refrain from texting, pull up as far as possible, be considerate of our neighbors, and not block the street.

Please note, as a charter school, our students come from throughout the Twin Cities Metro area due to the random application lottery process as set forth in Minnesota Charter School law.

