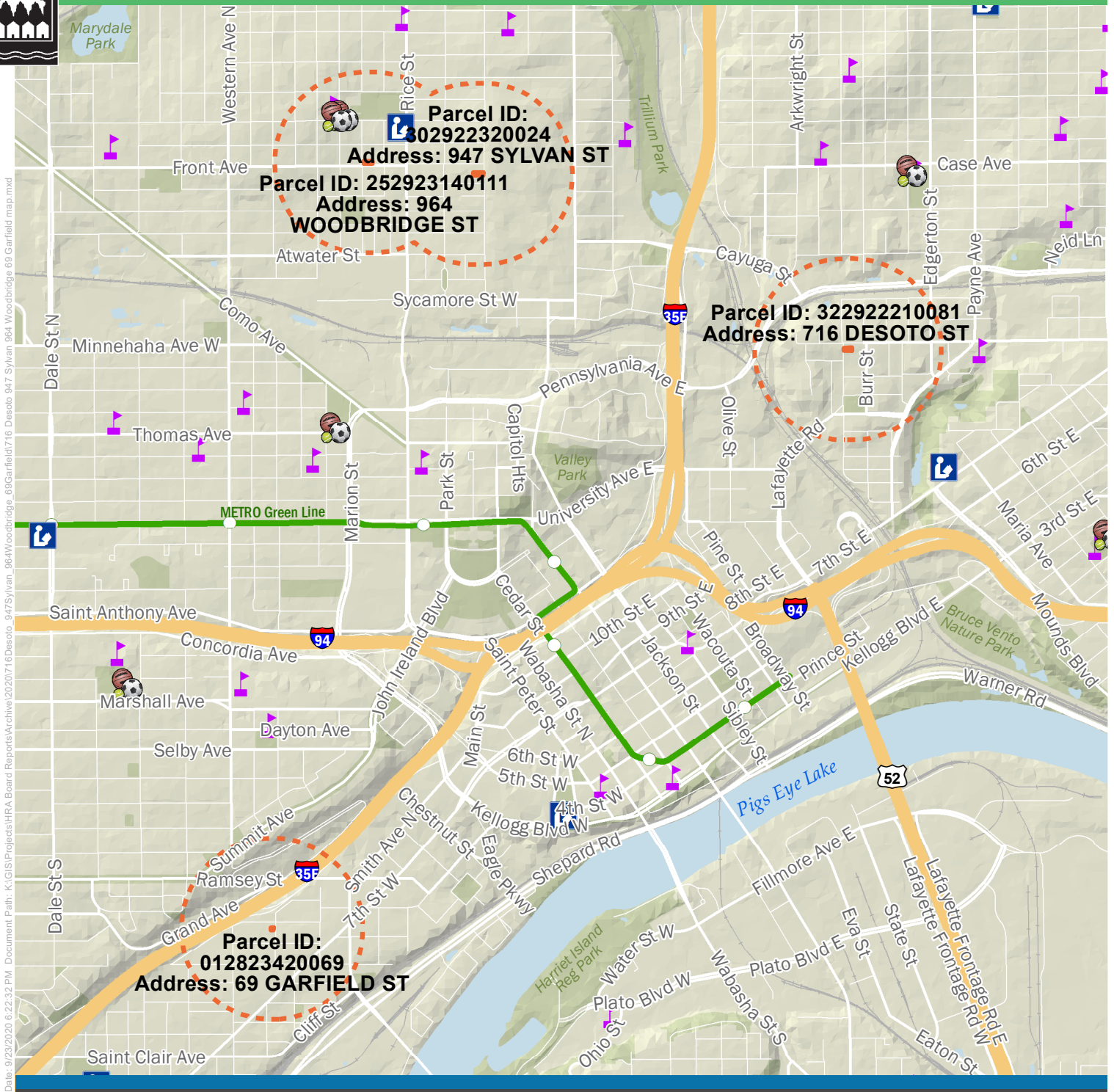
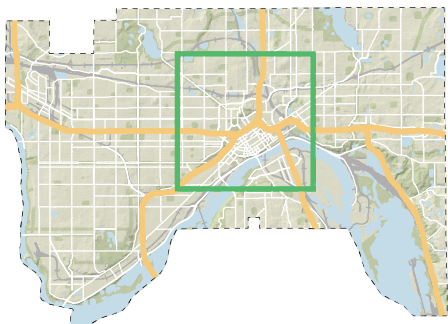




716 Desoto, 947 Sylvan, 964 Woodbridge, & 69 Garfield



Date: 9/29/2020 6:22:32 PM. Document Path: K:\GIS\Projects\HRA Board Reports\Archive\2020\716Desoto, 947Sylvan, 964Woodbridge, 69Garfield\716 Desoto, 947 Sylvan, 964 Woodbridge, 69 Garfield map.mxd



-  Libraries
-  Recreation Centers
-  Schools
-  Subject Parcels
-  Quarter Mile Distance

This document was prepared by the Saint Paul Planning and Economic Development Department and is intended to be used for reference and illustrative purposes only. This drawing is not a legally recorded plan, survey, official tax map or engineering schematic and is not intended to be used as such. Data sources: City of Saint Paul (Parks, Street Centerlines, Libraries, Rec Centers); Ramsey County (Street Outlines, Building Footprints, Parcels); Minnesota Geospatial Commons (Hydrography, Highways, Transit Lines and Stops, and Topography)

