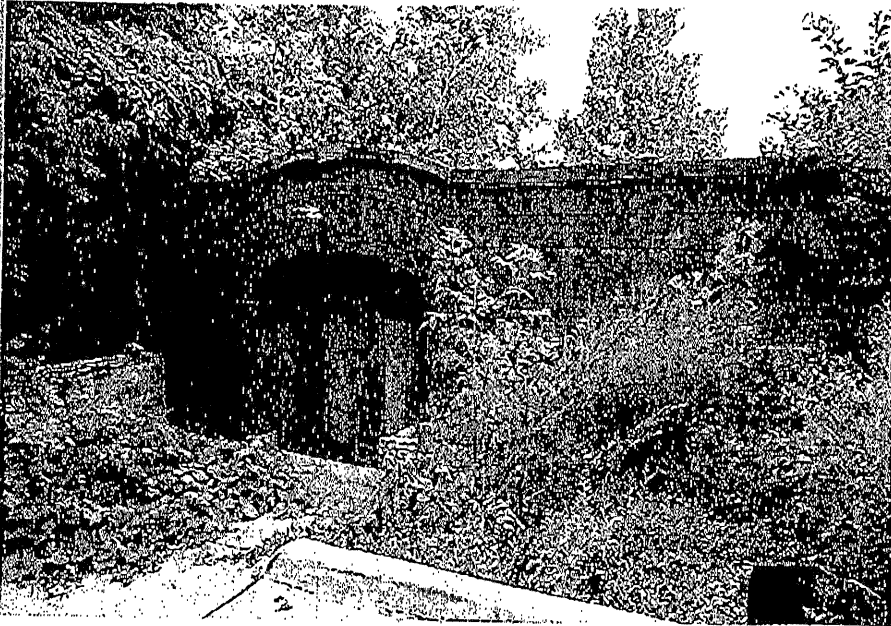
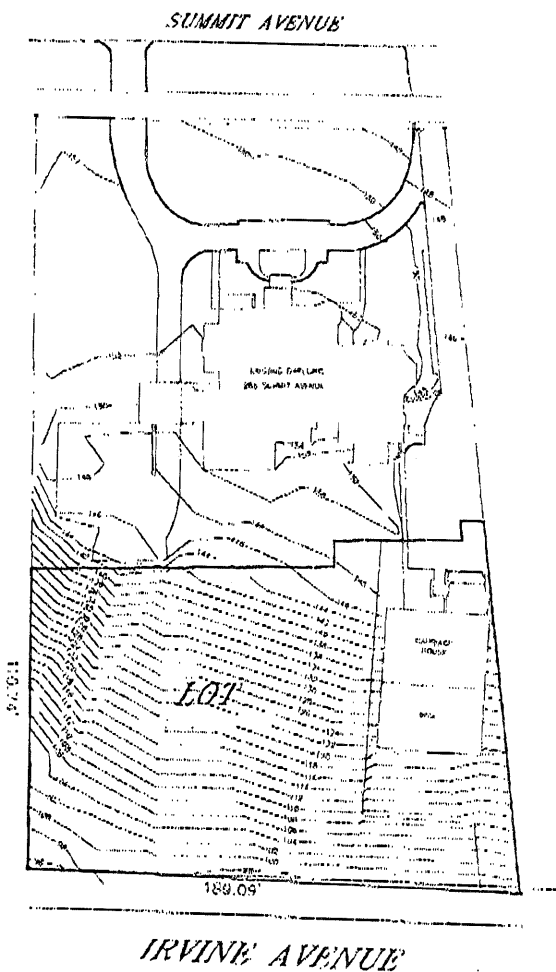


Don't miss your chance to live on Summit Avenue!



This Carriage House located on Summit Avenue, is 1,850 square feet and is totally ready for renovation.

RT-2 zoning offers great potential for developing this site.



Choice Properties

3300 Gorham Avenue
St. Louis Park, MN 55426

Phone: 952-836-1701
Cell: 612-388-2825
Email:

*Nicholson's
moved in 2001
bought from
Cath. Church
and I rehabbed
this was RE
listing*