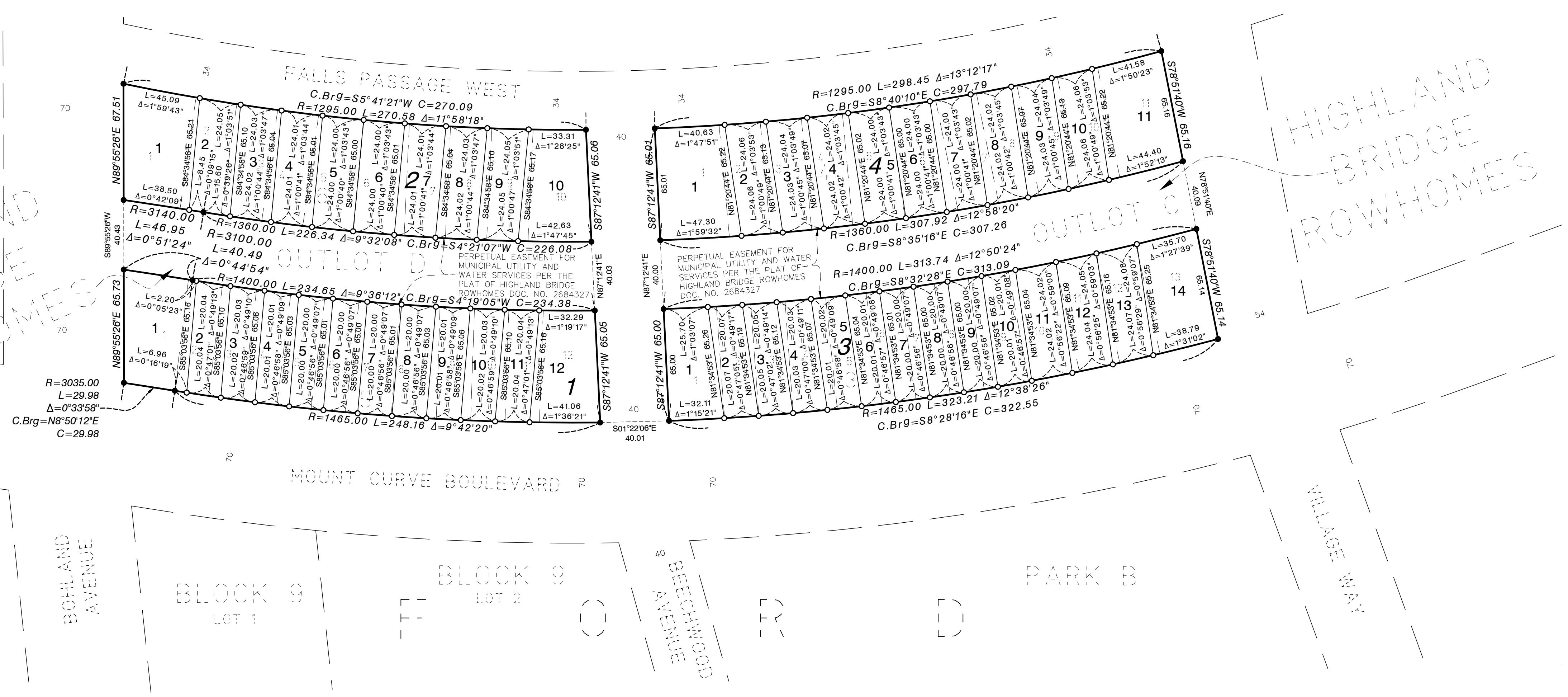


HIGHLAND BRIDGE ROWHOMES SECOND ADDITION PRELIMINARY PLAT

LOT AREAS

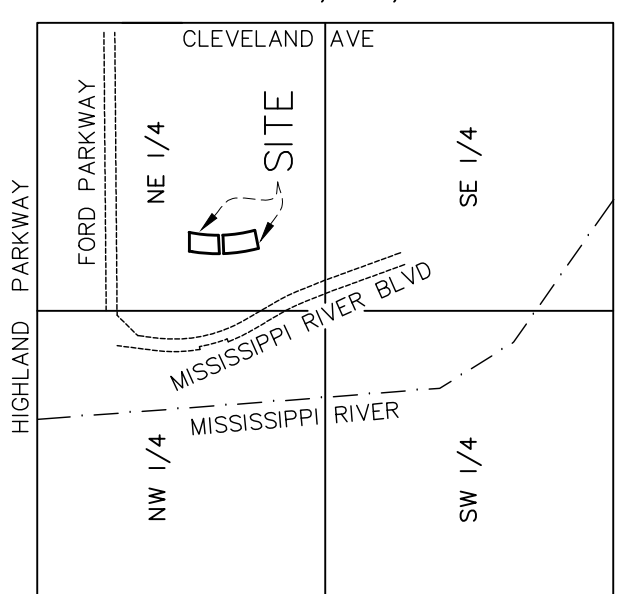
Area: Subject property contains: 76,090 sf or 1.75± acres

Block	Lot	Area (sf)	Area (ac)	
1	1	17,982	0.41±	
	2	2,587	0.06±	
	3	1,303	0.03±	
	4	1,301	0.03±	
	5	1,300	0.03±	
	6	1,300	0.03±	
	7	1,300	0.03±	
	8	1,300	0.03±	
	9	1,301	0.03±	
	10	1,301	0.03±	
	11	1,303	0.03±	
	12	2,384	0.05±	
2	1	17,700	0.41±	
	2	2,741	0.06±	
	3	1,563	0.04±	
	4	1,561	0.04±	
	5	1,560	0.04±	
	6	1,560	0.04±	
	7	1,560	0.04±	
	8	1,562	0.04±	
	9	1,563	0.04±	
	10	2,468	0.06±	
	3	1	20,701	0.48±
		2	1,879	0.04±
		3	1,304	0.03±
		4	1,303	0.03±
5		1,301	0.03±	
6		1,300	0.03±	
7		1,300	0.03±	
8		1,300	0.03±	
9		1,300	0.03±	
10		1,301	0.03±	
11		1,562	0.04±	
12		1,563	0.04±	
13		1,565	0.04±	
14		2,421	0.06±	
4	1	19,707	0.45±	
	2	2,857	0.07±	
	3	1,564	0.04±	
	4	1,562	0.04±	
	5	1,561	0.04±	
	6	1,560	0.04±	
	7	1,560	0.04±	
	8	1,561	0.04±	
	9	1,562	0.04±	
	10	1,564	0.04±	
	11	2,794	0.06±	



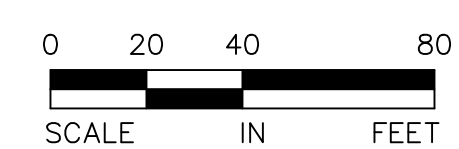
VICINITY MAP

SECTION 17, T.28, R.23



NOT TO SCALE

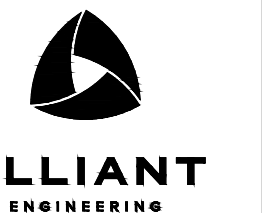
- Denotes 1/2 inch x 14 inch rebar found marked by license no. 45873, unless otherwise noted
- Denotes 1/2 inch x 18 inch iron pipe set marked by license no. 44110



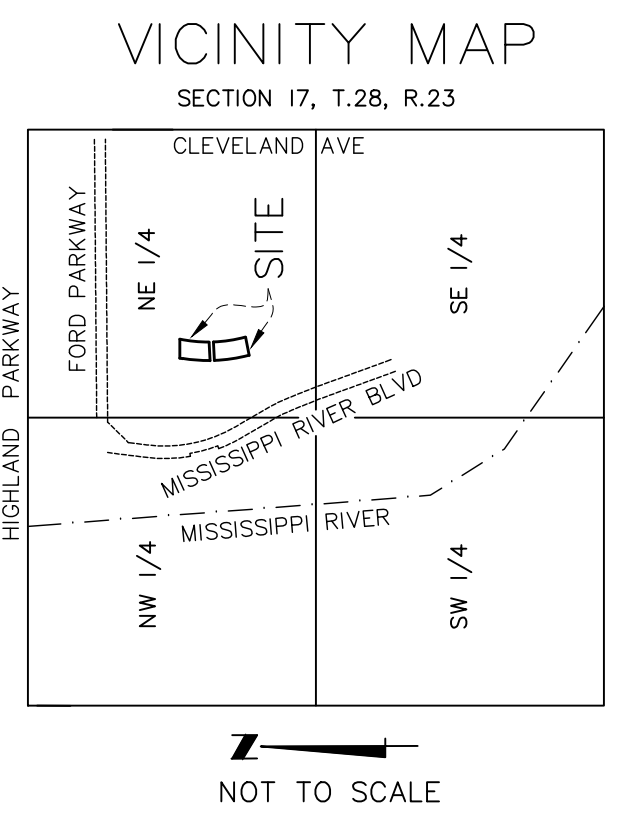
SCALE: ONE INCH EQUALS FORTY FEET

LEGAL DESCRIPTION

Lots 1-13, Block 3; Lots 1-11, Block 4; Lots 1-12, Block 5; Lots 1-10, Block 6; and Outlot C; HIGHLAND BRIDGE ROWHOMES, Ramsey County, Minnesota



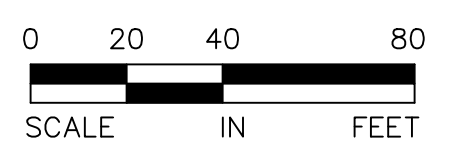
HIGHLAND BRIDGE ROWHOMES SECOND ADDITION PRELIMINARY PLAT



LEGEND

- EX. ROW
- EX. EASEMENT LINE
- ROW
- LOT LINE

- Denotes 1/2 inch x 14 inch rebar found marked by license no. 45873, unless otherwise noted
- Denotes 1/2 inch x 18 inch iron pipe set marked by license no. 44110



SCALE: ONE INCH EQUALS FORTY FEET

