

COVID-19 Vaccine Update

Kevin Best, MD

Interim Vice President of Medical Operations for Primary Care

March 10, 2021

Allina Health Vaccine Locations

★ Mini Hubs [100 – 200 a day]
 ★ Mass Hubs [500 – 1,000 a day]

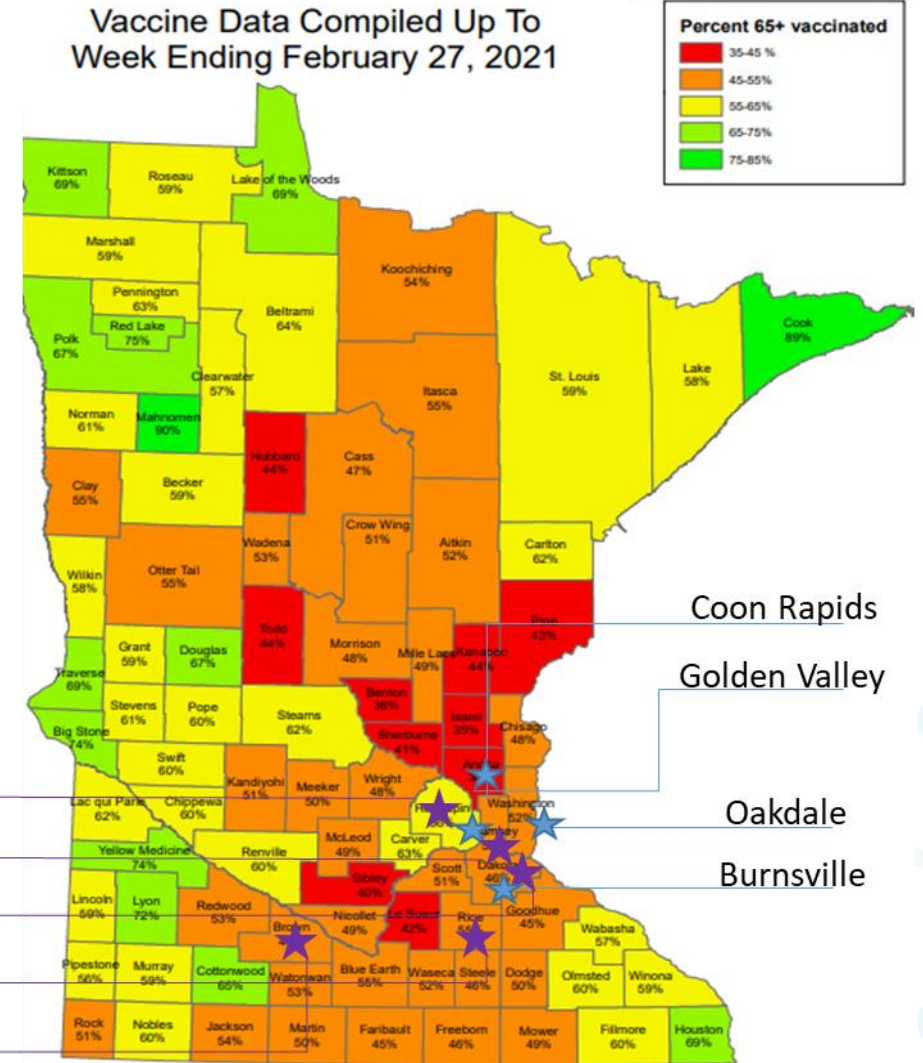
Sites in Operation: Coon Rapids, Golden Valley, Oakdale, Burnsville, New Ulm, River Falls, East Lake Street, West St. Paul, Faribault, Bandana Square (St. Paul)

Pop Up Clinics for community:
 Minneapolis
 St. Paul

Number of 1st doses: Total to date – 55,469

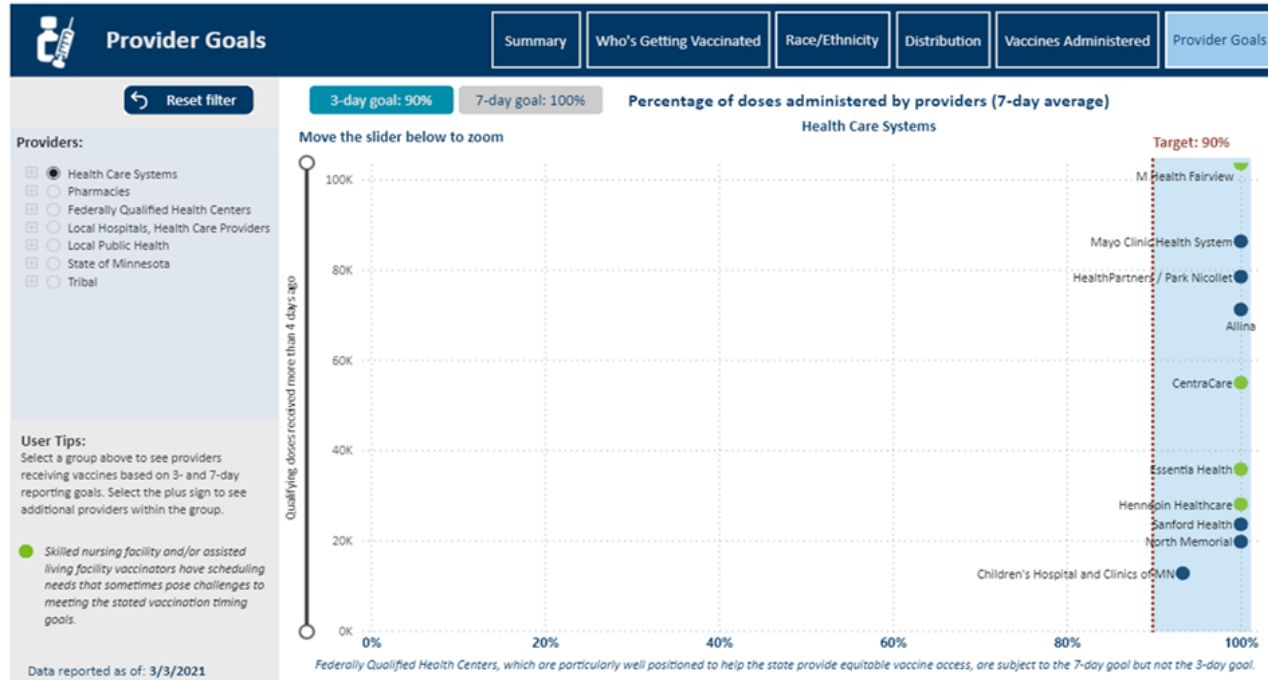
Number of 2nd doses: Total to date – 36,027

Total doses: 91,475



Allina Health Vaccine Administration

Vaccine Data



- Utilizing vaccines within 3 to 7 days, 100% of time
- Allocations range weekly from 3K to 5K, this week 14K
- Administering all 3 vaccines this week
- Continuing to make adjustments according to rapidly expanding MDH guidelines

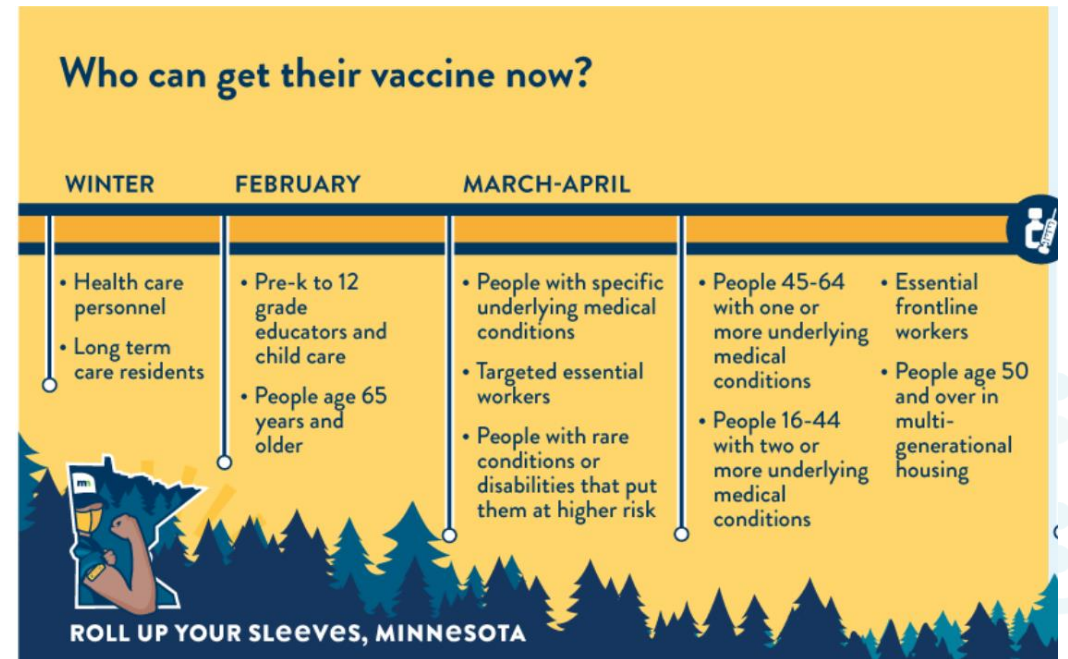
Allina Health Vaccine Administration

Patients

- Eligible Allina Health patients are contacted by email, phone or letter to schedule their vaccination in order of their placement on a randomized list.
- Completed 75+ patient population outreach
- Completed 65+ patient population outreach
- Beginning Tier 1b 2 & 1b 3

Employees

- Invited all healthcare workers and affiliates
- Partnered with LPH on essential workers



Community Outreach

West St. Paul + Bandana Square Clinics – Mini Hubs

Surrounding areas: Oakdale, Cottage Grove, Hastings, Richfield, Woodbury

Listening and Learning to Inform Actions: Identify needs, barriers, & concerns of BIPOC & LEP employees, patients, & community members.

- Hosted COVID-19 vaccine listening sessions with BIPOC Allina Health employees
- Partnering with BCBS and Marnita's Table on COVID community conversations for BIPOC communities across the state.

Continuous Improvement: Track and report vaccination rates by race, ethnicity and language to inform our strategy.

- Translating patient communications in Spanish, Hmong, Russian and Somali.
- Encourage primary care providers to contact their eligible patients of color to schedule an appointment.
- Hire community health workers to conduct follow-up calls to continue conversations and address barriers.
- Intentionally placing our community pop-up clinics closer to patients and communities with high social needs.

Community Partnerships: Collaboration to connect community to COVID-19 vaccine education sessions and pop-up clinics. Focused on serving Hmong, East-African, and African-American communities 65+.

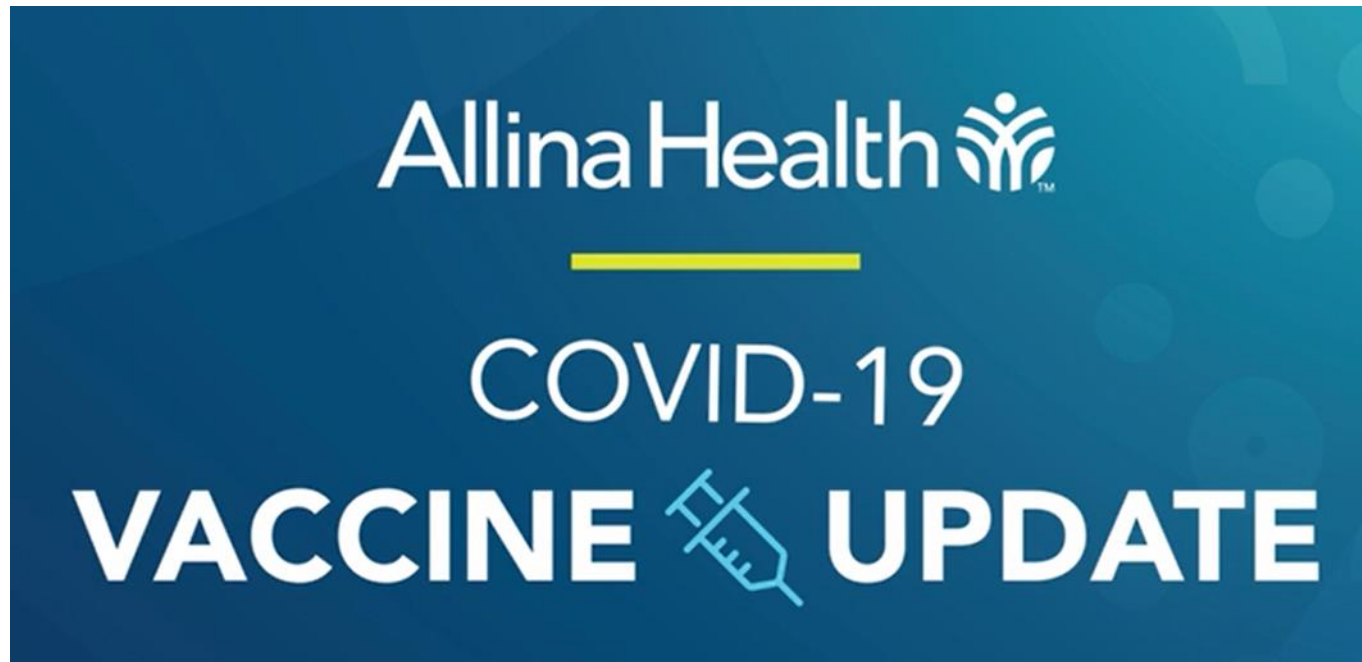
- Developing plans for community pop-up event in April at Como Park Senior High School.
- Coordinating with key Saint Paul partners, including Saint Paul Public Schools, Ramsey County Public Health, Saint Paul Public Housing.

Continued Partnership is Critical

1. Continue to utilize MDH and Care Delivery Consortium (CDS)
 - Coordinated efforts to find vaccines for people not affiliated with a provider.
2. Leverage existing community partnerships to spread the word of vaccine locations.
3. Participation in Center for Community Health (CCH) meetings.

Stay Informed

1. Where to go to get more info: <https://www.allinahealth.org/>
2. Social media: Facebook, Twitter
3. Check Allina Health MyChart Account



Thank you

Happy to answer any questions.

