

# BEACON BLUFF BUSINESS CENTER SOUTH 2ND ADDITION

KNOW ALL PERSONS BY THESE PRESENTS, That Part Authority of the City of Saint Paul, a Minnesota public body corporate and politic, owner of the following described property situated in the City of Saint Paul, County of Ramsey, State of Minnesota:

The part of Lot 1, Block 2, BEACON BLUFF BUSINESS CENTER SOUTH, Ramsey County, Minnesota lying southwesterly of the following described line:

Commencing at the northeast corner of said Lot 1, thence South 55 degrees 27 minutes 25 seconds West, assumed bearing, along the southeast line of said Lot 1, a distance of 823.11 feet to the center of the curve of a circular arc having a radius of 267.70 feet and subtending an angle of 33 degrees 30 minutes 33 seconds West, a distance of 283.38 feet to the north line of said Lot 1; and thence terminating.

AND

The part of Bush Avenue lying east of the southerly extension of the west line of Lot 1, Block 2, BEACON BLUFF BUSINESS CENTER SOUTH, Ramsey County, Minnesota, lying northwesterly of the southerly extension of the southeasterly line of said Lot 1, Block 2.

AND

Lots 1, 2 and 3, Block 19, Terry's Addition to the City of Saint Paul, Ramsey County, Minnesota.

Has caused the same to be surveyed and plotted in BEACON BLUFF BUSINESS CENTER SOUTH 2ND ADDITION and does hereby declare or declare to the City of Saint Paul, Minnesota, that the same are ready for record, and that the same are shown as shown on this plat, bearing and every assessment and term sewer assessment as shown on this plat.

In witness whereof said Part Authority of the City of Saint Paul, a Minnesota public body corporate and politic, has caused these presents to be signed by its proper officers this \_\_\_\_\_ day of \_\_\_\_\_, 201\_\_\_\_.

Signed: PART AUTHORITY OF THE CITY OF SAINT PAUL.

\_\_\_\_\_  
by \_\_\_\_\_

\_\_\_\_\_  
by \_\_\_\_\_

State of Minnesota  
County of \_\_\_\_\_

The foregoing instrument was acknowledged before me this \_\_\_\_\_ day of \_\_\_\_\_, 201\_\_\_\_ by \_\_\_\_\_ and \_\_\_\_\_ of Part Authority of the City of Saint Paul, a Minnesota public body corporate and politic, on behalf of the public body.

\_\_\_\_\_  
Signature  
(Printed Name) \_\_\_\_\_  
Notary Public \_\_\_\_\_  
My Commission Expires January 31, 201\_\_\_\_

SURVEYOR'S CERTIFICATION

I, Paul J. Mackubin, Professional Land Surveyor, do hereby certify that I have surveyed or directly supervised the survey of the property described on this plat prepared this plat or directly supervised the preparation of this plat that mathematical data and details are correctly depicted on this plat. That all monuments depicted on this plat have been correctly set; that all water boundaries and wet lands, as defined in Minnesota Statutes, Section 950.01, have been correctly shown and that all other boundaries and details on this plat and all public ways are shown and labeled on this plat.

Dated this \_\_\_\_\_ day of \_\_\_\_\_, 201\_\_\_\_

Paul J. Mackubin, Professional Land Surveyor  
Minnesota Statutes No. 169.91

**LOUCKS**

County of Minnesota  
City of Saint Paul

This foregoing Surveyor's Certificate was acknowledged before me this \_\_\_\_\_ day of \_\_\_\_\_, 201\_\_\_\_ by Paul J. Mackubin, a Professional Land Surveyor.

\_\_\_\_\_  
Signature  
(Printed Name) \_\_\_\_\_  
Notary Public Ramsey County, Minnesota  
My Commission Expires January 31, 2020

CITY OF SAINT PAUL

I do hereby certify that on the \_\_\_\_\_ day of \_\_\_\_\_, 201\_\_\_\_ the City Council of the City of Saint Paul, Minnesota, approved this plat. Also, the conditions of Minnesota Statutes, Section 923.03, Subd. 2, have been fulfilled.

\_\_\_\_\_  
City Clerk

PROPERTY TAX, RECORDS AND ELECTION SERVICES DEPARTMENT

Pursuant to Minnesota Statutes, Section 515.021, Subd. 9, taxes payable in the year \_\_\_\_\_ on the land hereinbefore described have been paid. Also, pursuant to Minnesota Statutes, Section 272.12, there are no delinquent taxes and transfer entered this \_\_\_\_\_ day of \_\_\_\_\_, 201\_\_\_\_.

Christopher A. Samuel, Ramsey County Auditor/Treasurer

By: \_\_\_\_\_ Deputy

COUNTY SURVEYOR

Pursuant to Minnesota Statutes, Section 383A.42, this plat is approved this \_\_\_\_\_ day of \_\_\_\_\_, 201\_\_\_\_.

Craig W. Heaman, Land Surveyor  
Ramsey County Surveyor

COUNTY RECORDER, County of Ramsey, State of Minnesota

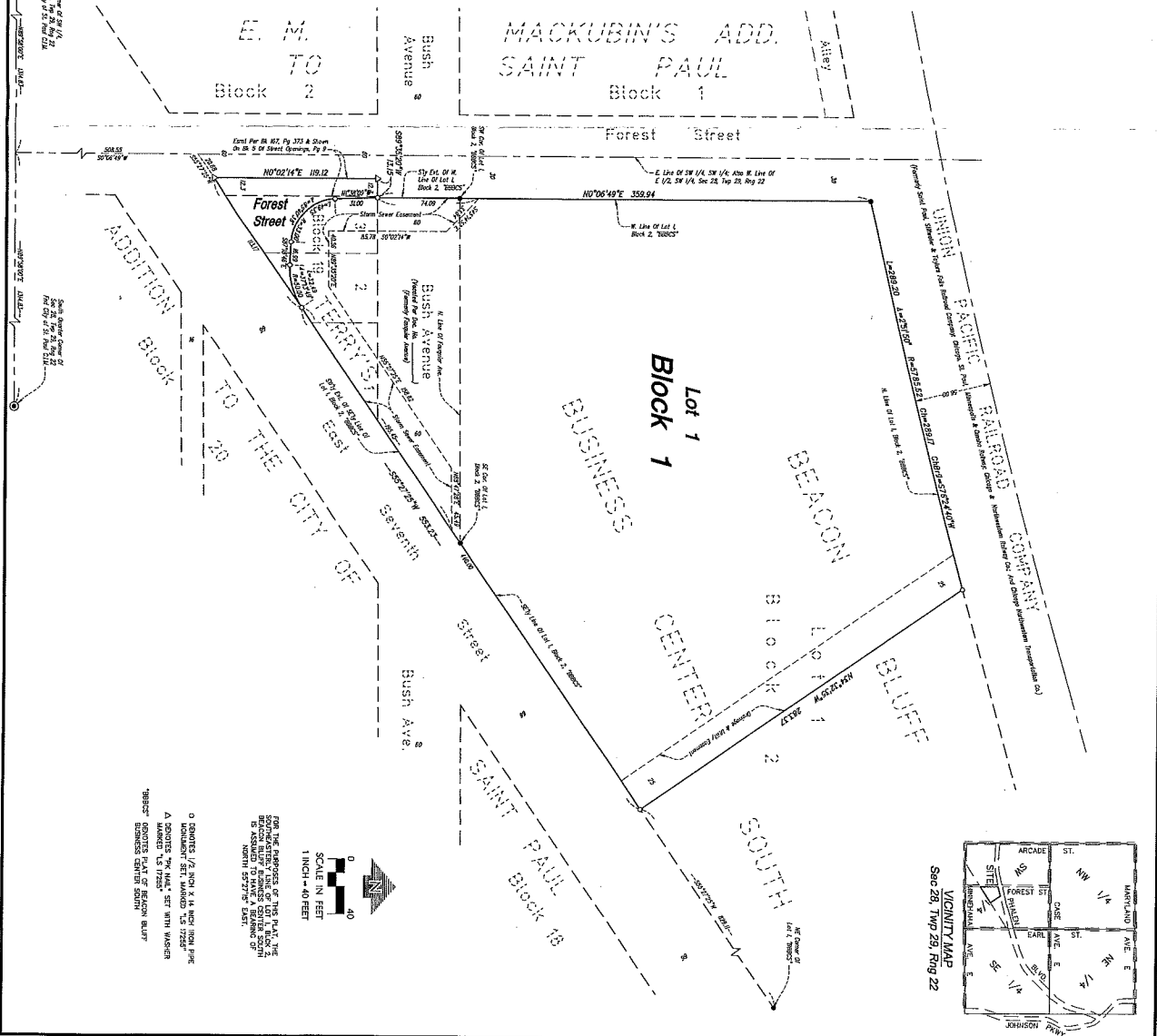
I hereby certify that the date of BEACON BLUFF BUSINESS CENTER SOUTH SECOND ADDITION was filed in the office of the County Recorder for public record on this \_\_\_\_\_ day of \_\_\_\_\_, 201\_\_\_\_ at \_\_\_\_\_ o'clock \_\_\_\_\_ M., and was duly filed in Book \_\_\_\_\_ of Plat Page \_\_\_\_\_ as Document No. \_\_\_\_\_.

Deputy County Recorder \_\_\_\_\_

REGISTRAR OF TITLES, County of Ramsey, State of Minnesota

I hereby certify that this date of BEACON BLUFF BUSINESS CENTER SOUTH SECOND ADDITION was filed in the office of the Registrar of Titles for public record on this \_\_\_\_\_ day of \_\_\_\_\_, 201\_\_\_\_ at \_\_\_\_\_ o'clock \_\_\_\_\_ M., and was duly filed in Book \_\_\_\_\_ of Plat Page \_\_\_\_\_ as Document No. \_\_\_\_\_.

Deputy Registrar of Titles \_\_\_\_\_



0 CORNERS 1/2 INCH X 8 INCH ROUND PINS  
A CORNERS 3/4 INCH X 8 INCH SQUARE MARKERS 1/8 INCH SET WITH NUMBER  
"BENCH" CORNERS BEACON BLUFF BUSINESS CENTER SOUTH

FROM THE PROPOSED CENTER OF THIS PLAT, THE BEACON BLUFF BUSINESS CENTER SOUTH SECOND ADDITION WAS FILED IN THE OFFICE OF THE COUNTY RECORDER AND REGISTRAR OF TITLES OF RAMSEY COUNTY, MINNESOTA, ON \_\_\_\_\_ DAY OF \_\_\_\_\_, 201\_\_\_\_.

SCALE IN FEET  
1 INCH = 40 FEET

