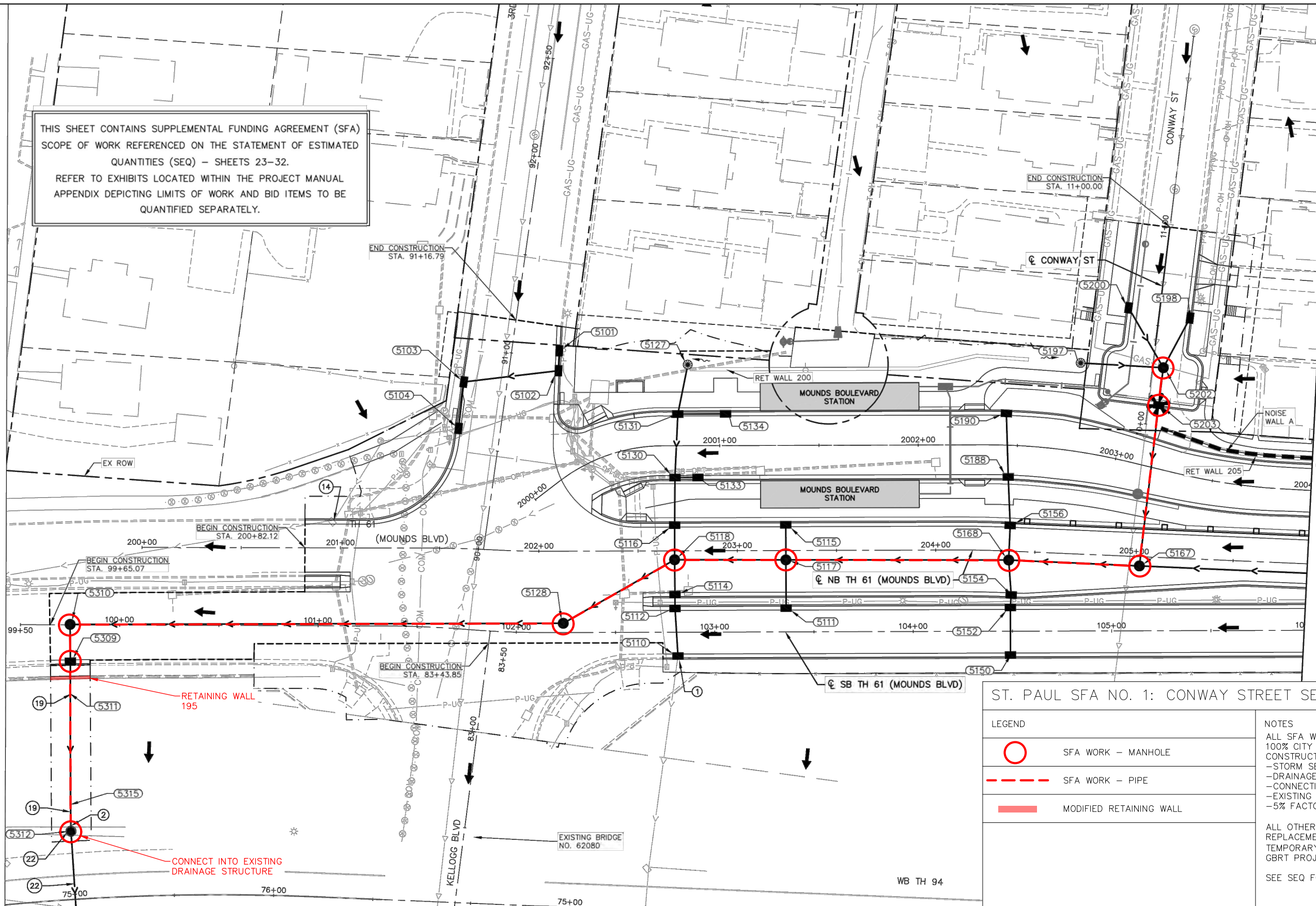
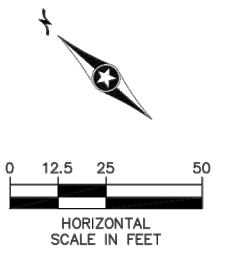


THIS SHEET CONTAINS SUPPLEMENTAL FUNDING AGREEMENT (SFA) SCOPE OF WORK REFERENCED ON THE STATEMENT OF ESTIMATED QUANTITIES (SEQ) - SHEETS 23-32. REFER TO EXHIBITS LOCATED WITHIN THE PROJECT MANUAL APPENDIX DEPICTING LIMITS OF WORK AND BID ITEMS TO BE QUANTIFIED SEPARATELY.



SEE SHEET 1301



ST. PAUL SFA NO. 1: CONWAY STREET SEWER SEPARATION (1 OF 1)

LEGEND

	SFA WORK - MANHOLE
	SFA WORK - PIPE
	MODIFIED RETAINING WALL

NOTES

ALL SFA WORK (SHOWN IN RED) IS ASSUMED TO BE 100% CITY OF ST. PAUL AND INCLUDED IN THE SFA CONSTRUCTION COST INCLUDING:

- STORM SEWER
- DRAINAGE STRUCTURES
- CONNECTIONS INTO DOWNSTREAM STORM SEWER
- EXISTING RETAINING WALL MODIFICATION
- 5% FACTOR TO COVER MOBILIZATION

ALL OTHER WORK NOT SHOWN IN RED (PAVEMENT REPLACEMENT, TRAFFIC CONTROL, AND OTHER TEMPORARY MEASURES) ARE ASSUMED TO BE 100% GBRT PROJECT COSTS.

SEE SEQ FOR SEPERATE COST ESTIMATES

Jul, 27 2021 01:43 pm C:\cadd\lib\pw\gic3d\g0228424\SE02-STM-PLN.dwg By: dolson

NO.	REVISIONS	BY	APP	DATE

DRAWN: DWO
 DESIGNED: DSP
 CHECKED: DWF



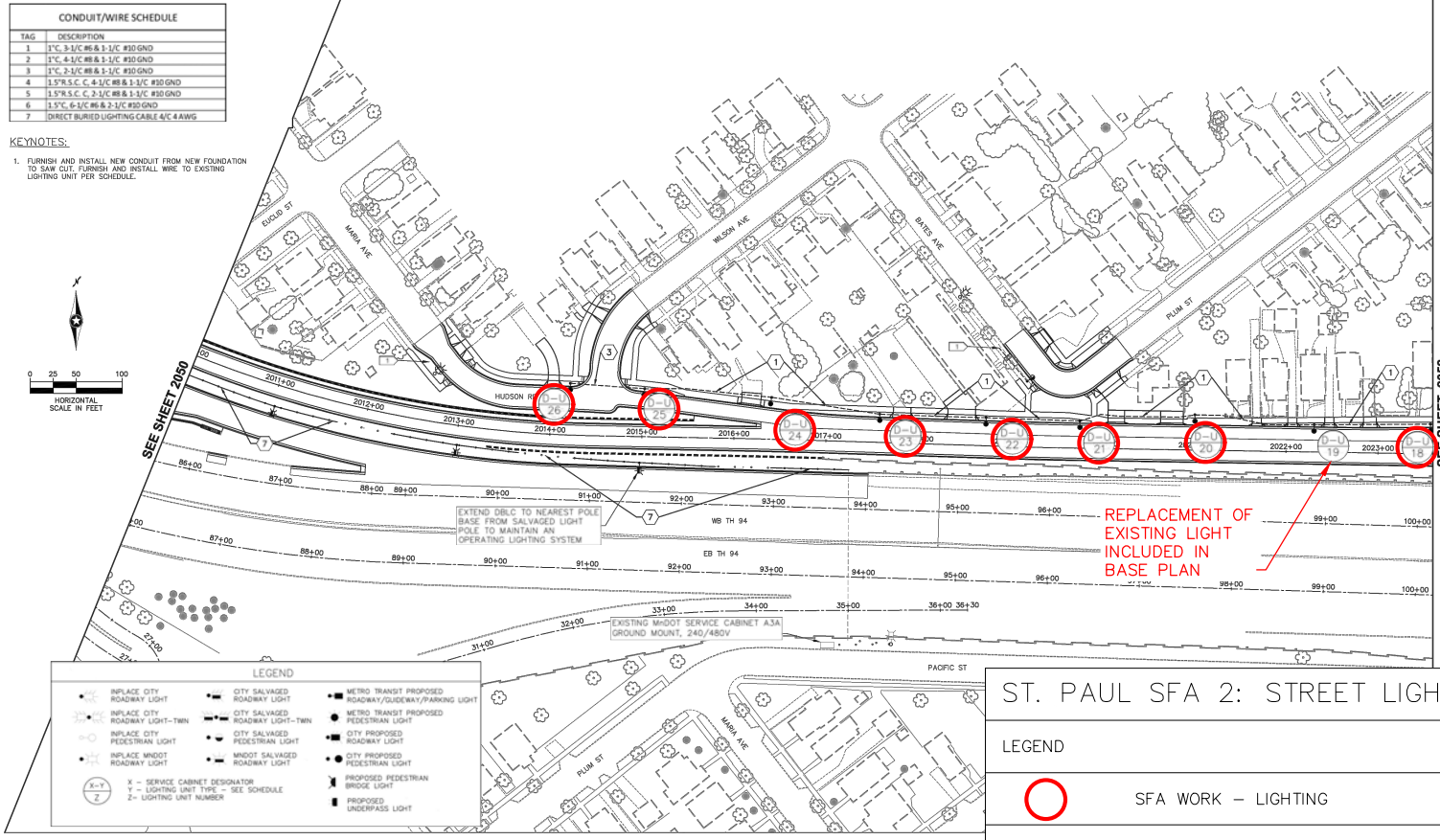
I HEREBY CERTIFY THAT THIS PLAN, SPECIFICATION OR REPORT WAS PREPARED BY ME OR UNDER MY DIRECT SUPERVISION AND THAT I AM A DULY LICENSED PROFESSIONAL ENGINEER UNDER THE LAWS OF THE STATE OF MINNESOTA.

CERTIFIED BY: DAVID FILIPIAK
 LIC. NO. 19596 DATE 09/24/2021

DRAINAGE PLANS

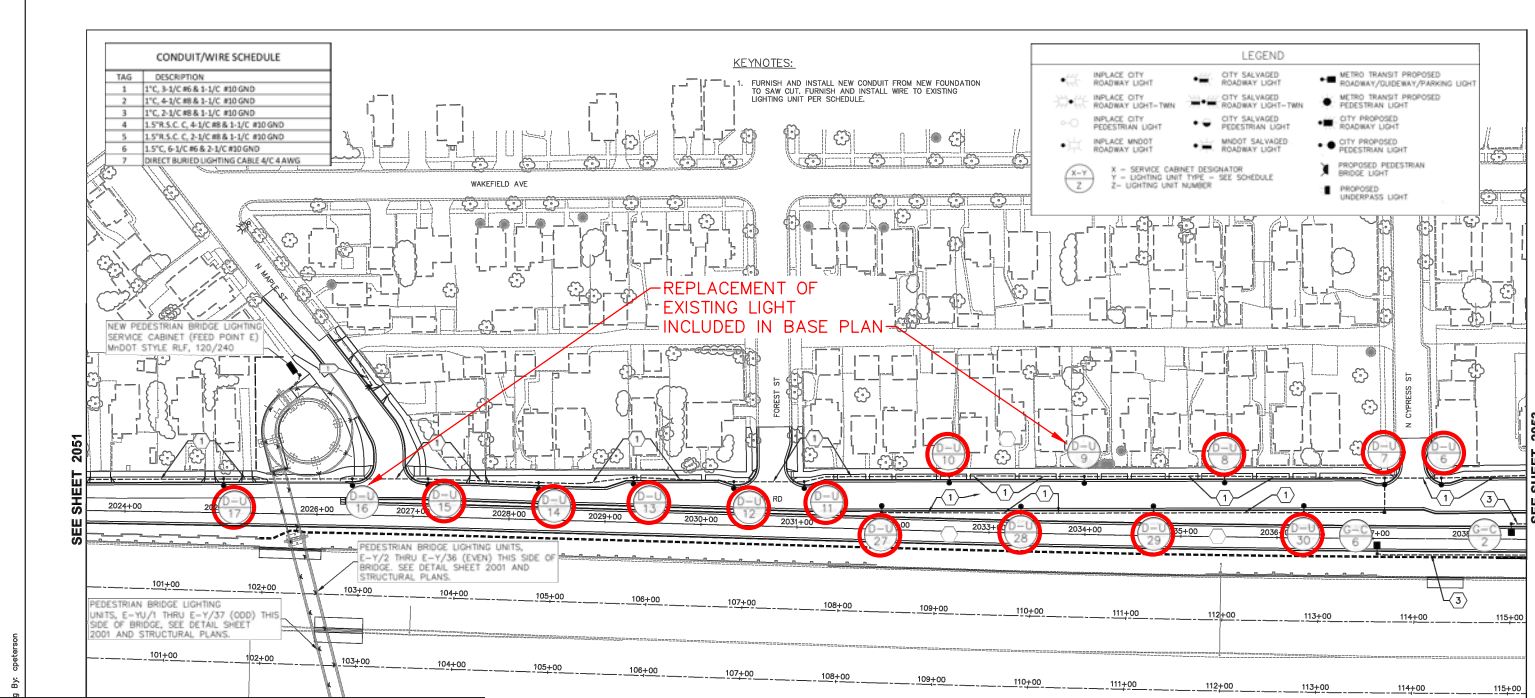
STATE PROJ. NO. 6217-45 (TH 3), 6221-110 (TH 61), 6283-254 (TH 94), 6220-87 (TH 61), 8282-139 (TH 94), 8286-93 (TH 694)

1300 OF 2649



NO.	REVISIONS	BY	APP	DATE

DRAWN: Kimley-Horn & Associates, Inc. METRO Gold Line
 DESIGNED: LSRF METROPOLITAN 100% SUBMITTAL
 CHECKED: LSRF METROPOLITAN 100% SUBMITTAL
 I HEREBY CERTIFY THAT THIS PLAN, SPECIFICATION OR REPORT WAS PREPARED BY ME OR UNDER MY DIRECT SUPERVISION AND THAT I AM A DULY LICENSED PROFESSIONAL ENGINEER UNDER THE LAWS OF THE STATE OF MINNESOTA.
 CERTIFIED BY: STEVE MCHENRY DATE: 09/24/2021 STATE PROJ. NO. 6217-45 (TH 3), 6221-110 (TH 61), 6283-254 (TH 94), 8220-87 (TH 61), 8282-139 (TH 94), 8286-93 (TH 694)



NO.	REVISIONS	BY	APP	DATE

DRAWN: Kimley-Horn & Associates, Inc. METRO Gold Line
 DESIGNED: LSRF METROPOLITAN 100% SUBMITTAL
 CHECKED: LSRF METROPOLITAN 100% SUBMITTAL
 I HEREBY CERTIFY THAT THIS PLAN, SPECIFICATION OR REPORT WAS PREPARED BY ME OR UNDER MY DIRECT SUPERVISION AND THAT I AM A DULY LICENSED PROFESSIONAL ENGINEER UNDER THE LAWS OF THE STATE OF MINNESOTA.
 CERTIFIED BY: STEVE MCHENRY DATE: 09/24/2021 STATE PROJ. NO. 6217-45 (TH 3), 6221-110 (TH 61), 6283-254 (TH 94), 8220-87 (TH 61), 8282-139 (TH 94), 8286-93 (TH 694)

ST. PAUL SFA 2: STREET LIGHTING UPDATES (1 OF 3)

LEGEND

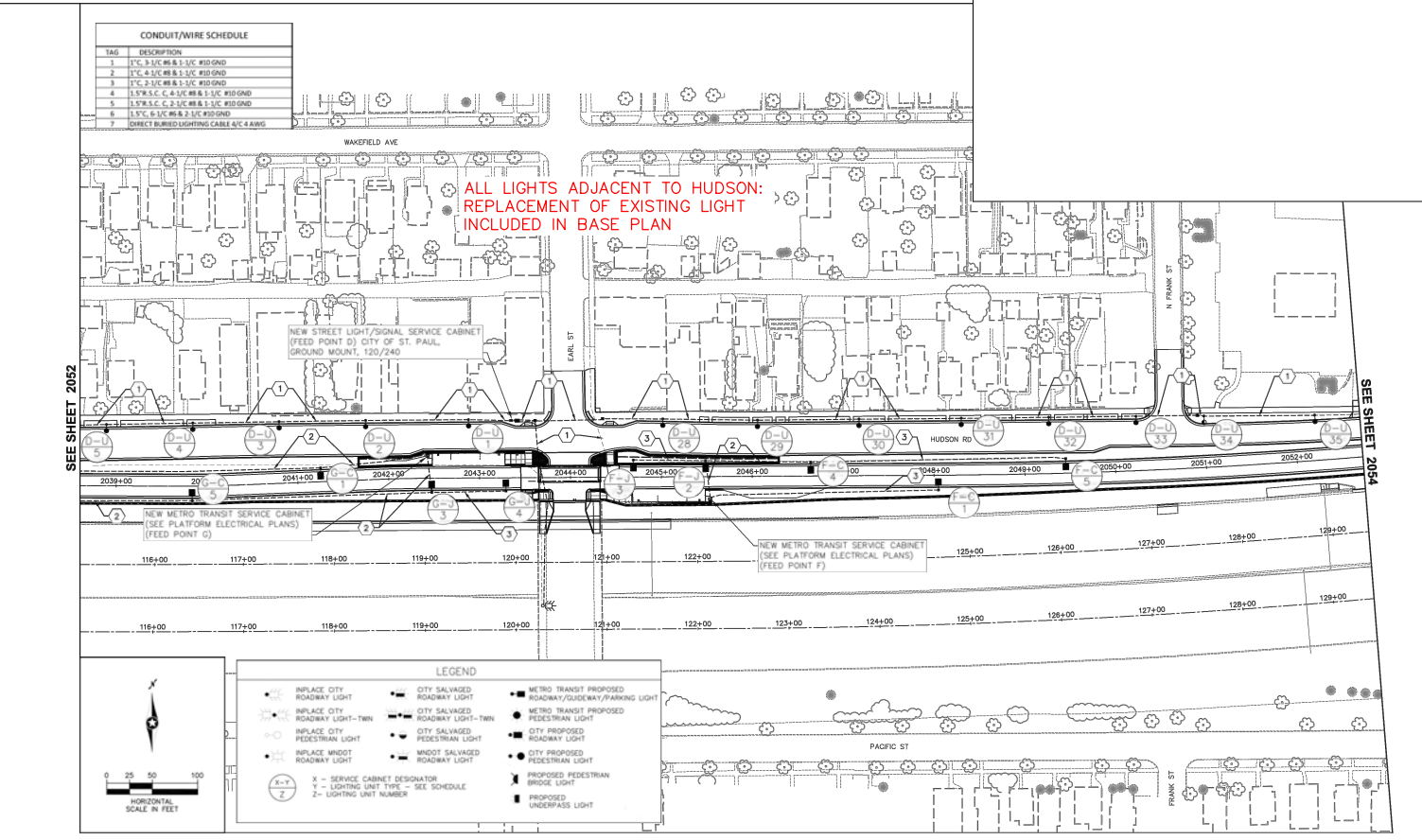
○ SFA WORK - LIGHTING

NOTES

ALL SFA WORK (SHOWN IN RED) IS ASSUMED TO BE 100% CITY OF ST. PAUL AND INCLUDED IN THE SFA CONSTRUCTION COST INCLUDING:
 - STREET LIGHTING
 - 5% FACTOR TO COVER MOBILIZATION COSTS

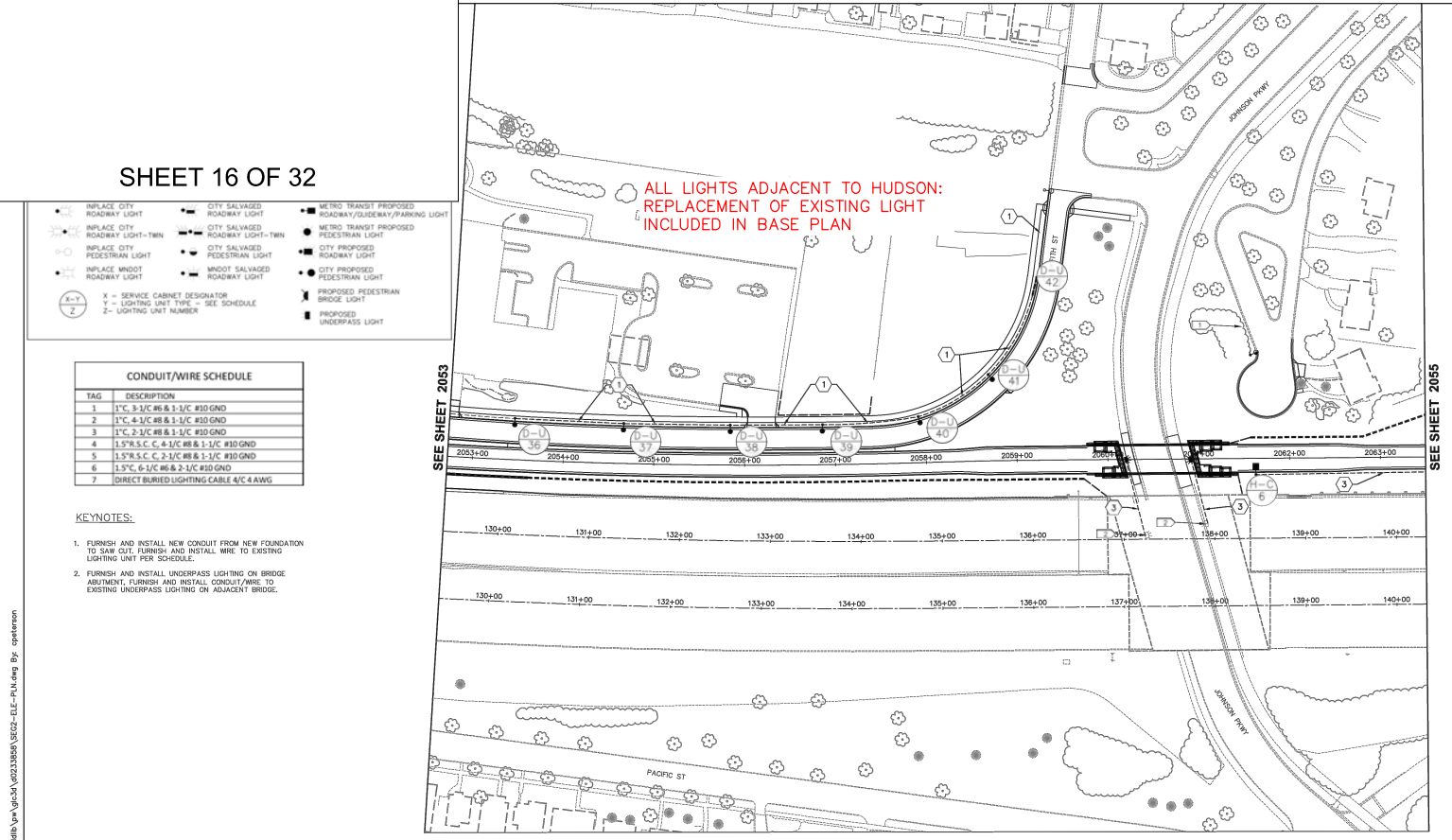
ALL OTHER WORK NOT SHOWN IN RED (PAVEMENT REPLACEMENT, TRAFFIC CONTROL, AND OTHER TEMPORARY MEASURES) ARE ASSUMED TO BE 100% GBRT PROJECT COSTS.

SEE SEQ FOR SEPERATE COST ESTIMATES



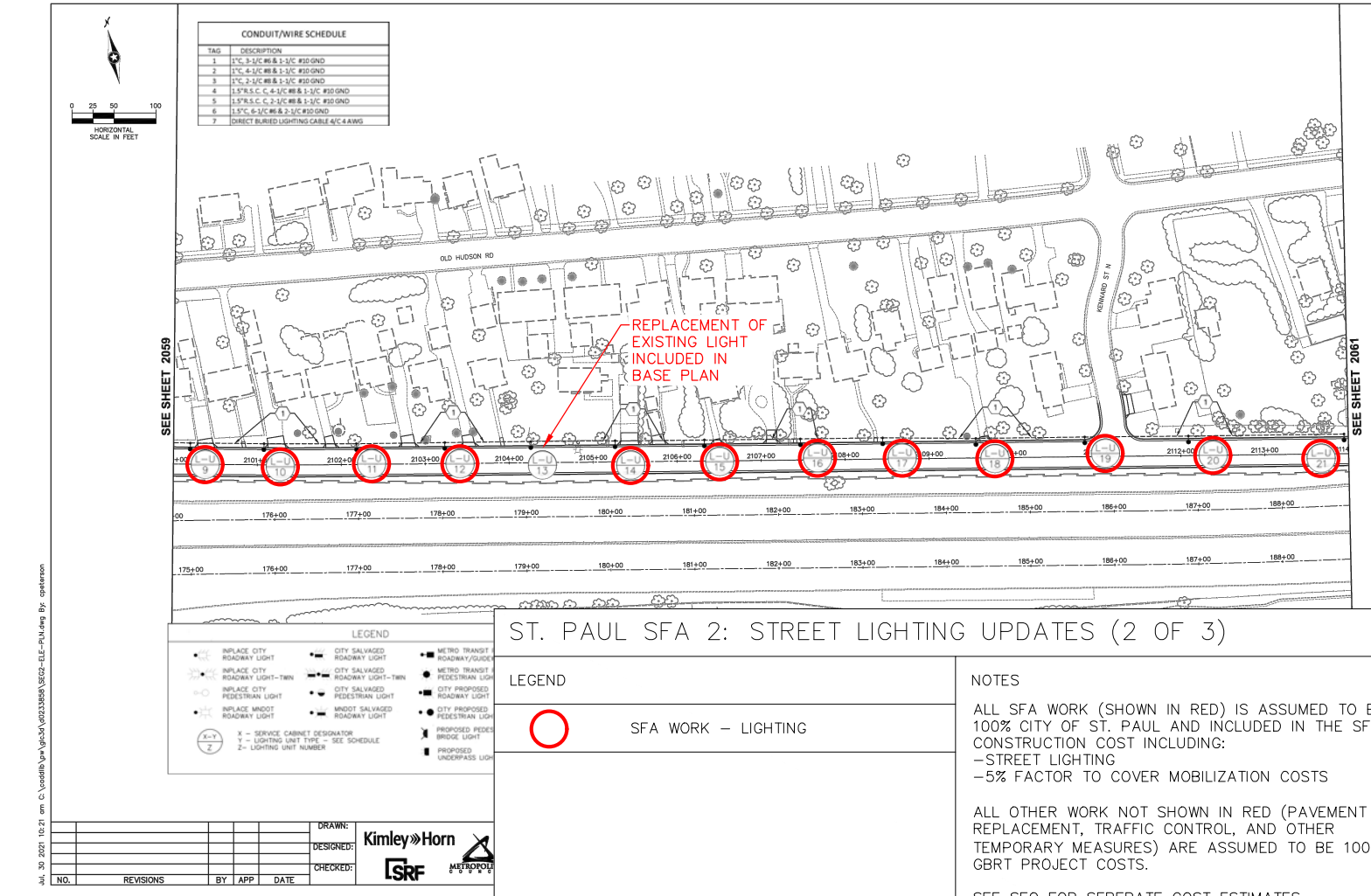
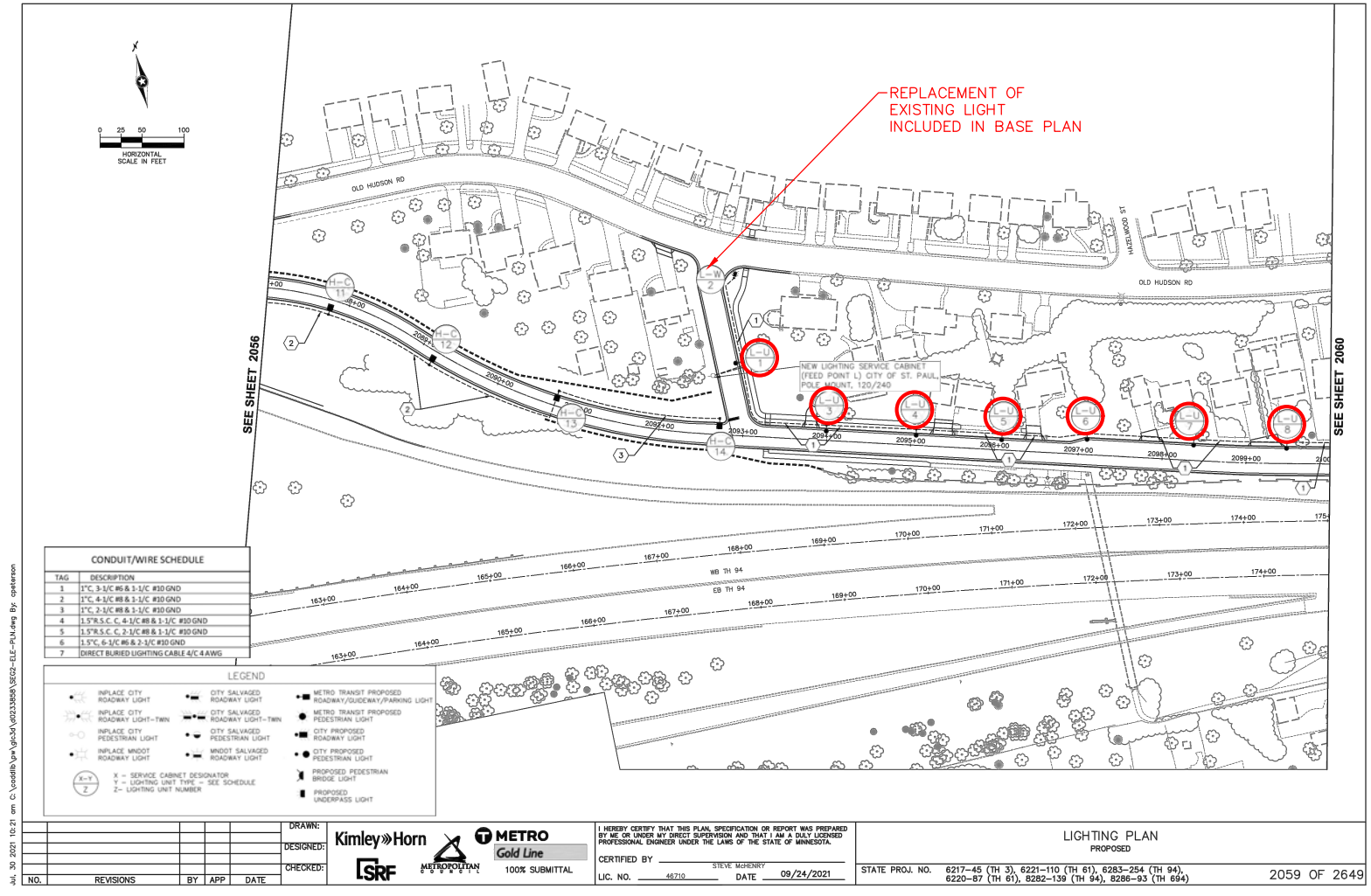
NO.	REVISIONS	BY	APP	DATE

DRAWN: Kimley-Horn & Associates, Inc. METRO Gold Line
 DESIGNED: LSRF METROPOLITAN 100% SUBMITTAL
 CHECKED: LSRF METROPOLITAN 100% SUBMITTAL
 I HEREBY CERTIFY THAT THIS PLAN, SPECIFICATION OR REPORT WAS PREPARED BY ME OR UNDER MY DIRECT SUPERVISION AND THAT I AM A DULY LICENSED PROFESSIONAL ENGINEER UNDER THE LAWS OF THE STATE OF MINNESOTA.
 CERTIFIED BY: STEVE MCHENRY DATE: 09/24/2021 STATE PROJ. NO. 6217-45 (TH 3), 6221-110 (TH 61), 6283-254 (TH 94), 8220-87 (TH 61), 8282-139 (TH 94), 8286-93 (TH 694)



NO.	REVISIONS	BY	APP	DATE

DRAWN: Kimley-Horn & Associates, Inc. METRO Gold Line
 DESIGNED: LSRF METROPOLITAN 100% SUBMITTAL
 CHECKED: LSRF METROPOLITAN 100% SUBMITTAL
 I HEREBY CERTIFY THAT THIS PLAN, SPECIFICATION OR REPORT WAS PREPARED BY ME OR UNDER MY DIRECT SUPERVISION AND THAT I AM A DULY LICENSED PROFESSIONAL ENGINEER UNDER THE LAWS OF THE STATE OF MINNESOTA.
 CERTIFIED BY: STEVE MCHENRY DATE: 09/24/2021 STATE PROJ. NO. 6217-45 (TH 3), 6221-110 (TH 61), 6283-254 (TH 94), 8220-87 (TH 61), 8282-139 (TH 94), 8286-93 (TH 694)



ST. PAUL SFA 2: STREET LIGHTING UPDATES (2 OF 3)

LEGEND

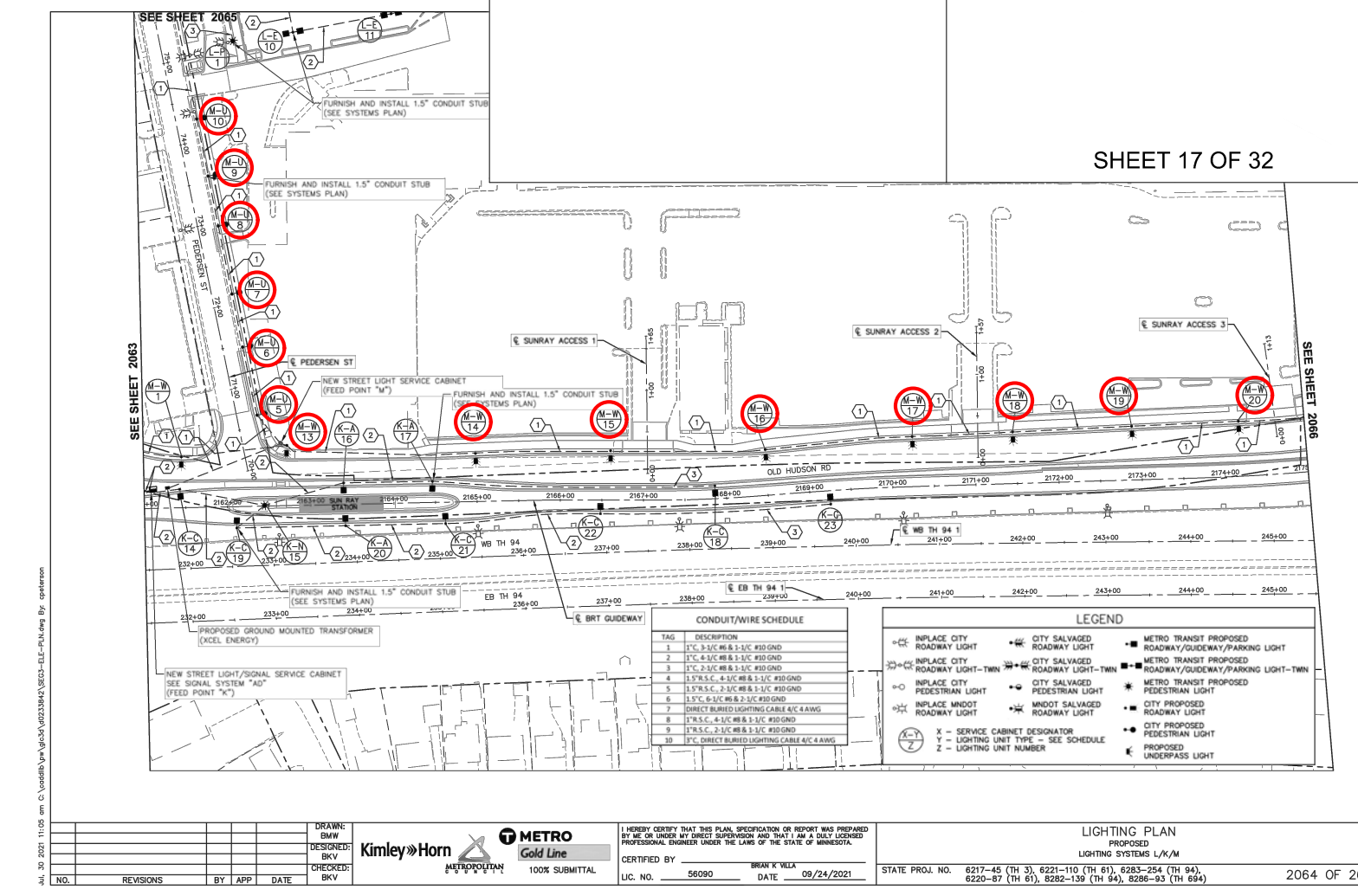
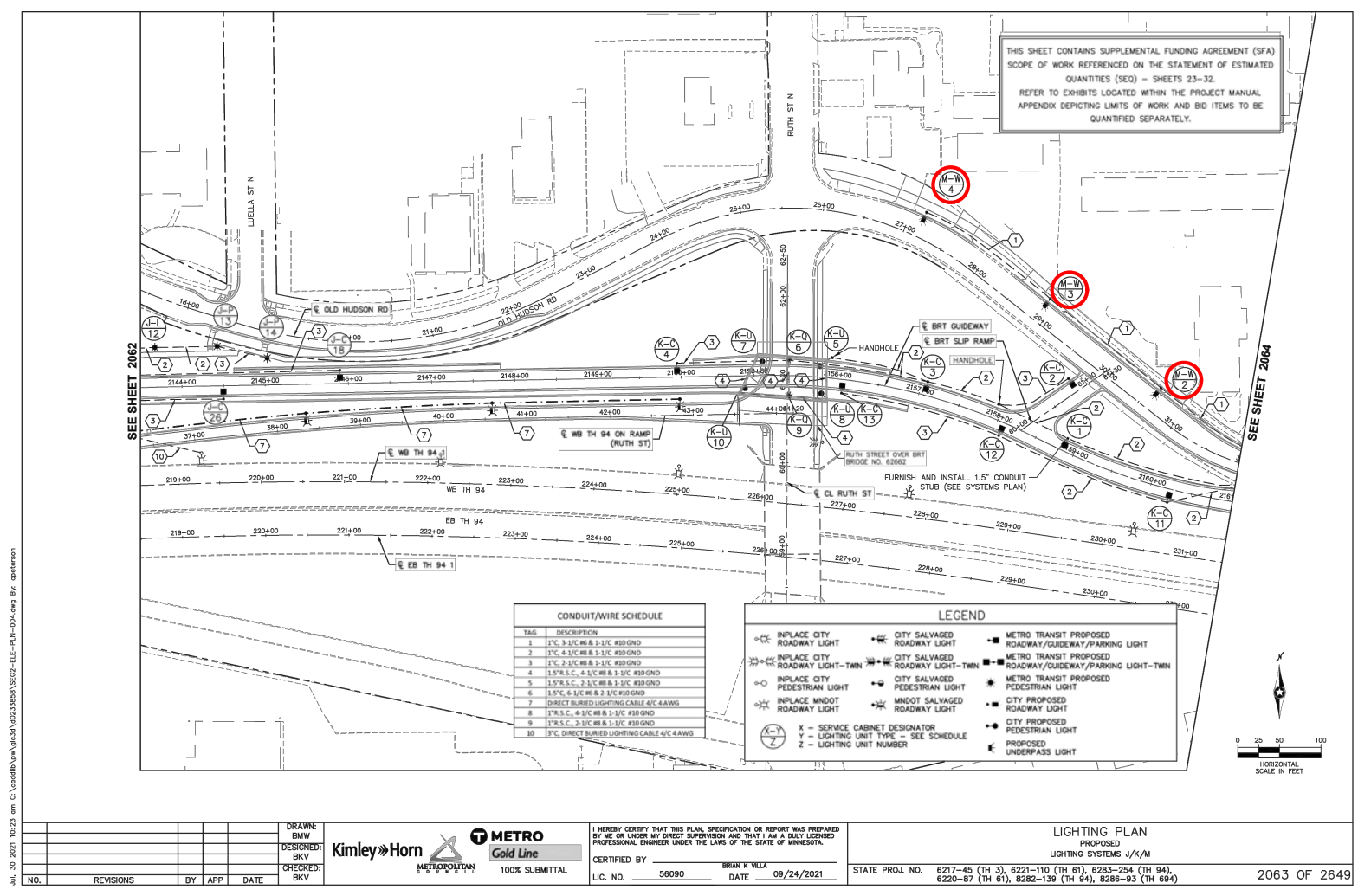
○ SFA WORK - LIGHTING

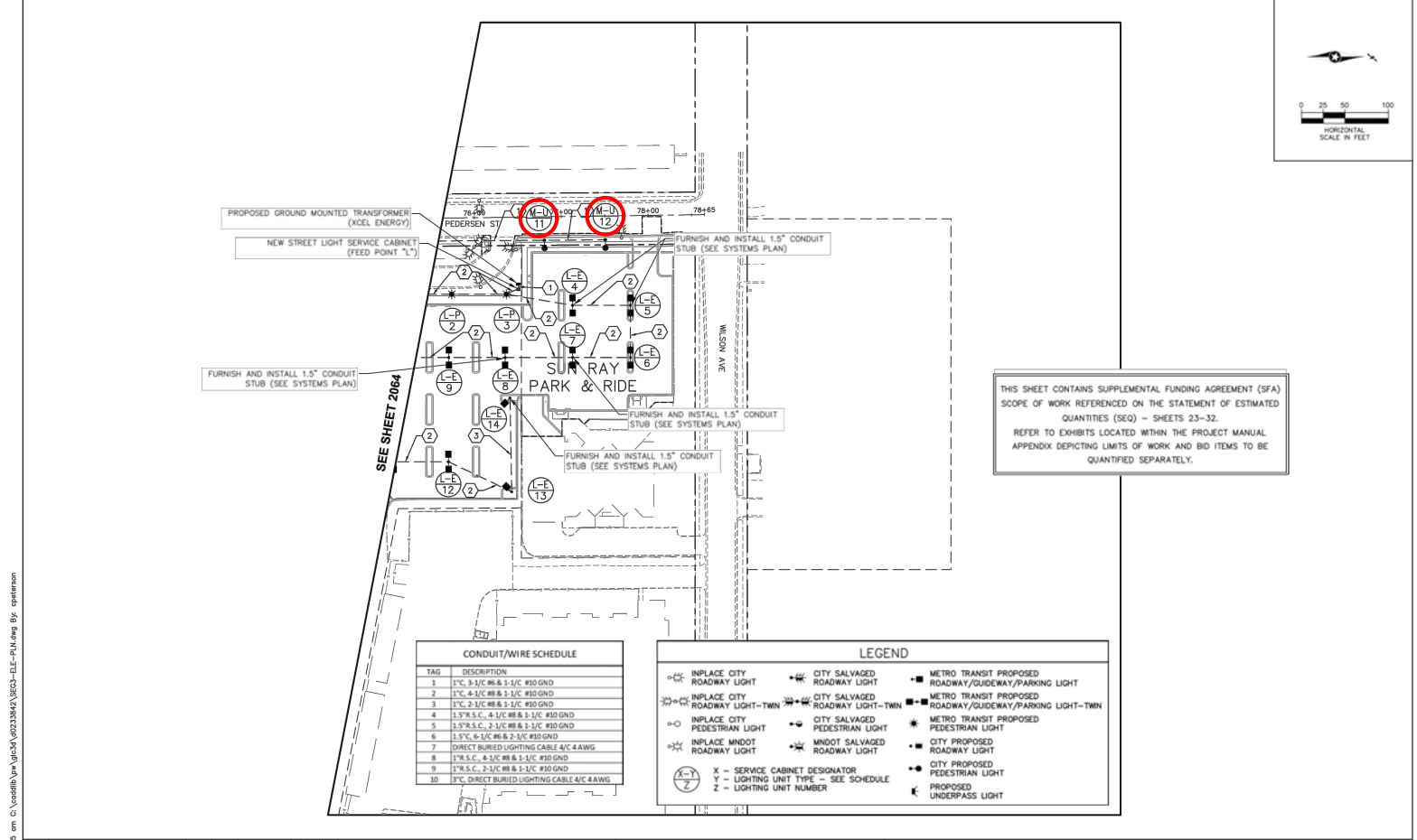
NOTES

ALL SFA WORK (SHOWN IN RED) IS ASSUMED TO BE 100% CITY OF ST. PAUL AND INCLUDED IN THE SFA CONSTRUCTION COST INCLUDING:
 - STREET LIGHTING
 - 5% FACTOR TO COVER MOBILIZATION COSTS

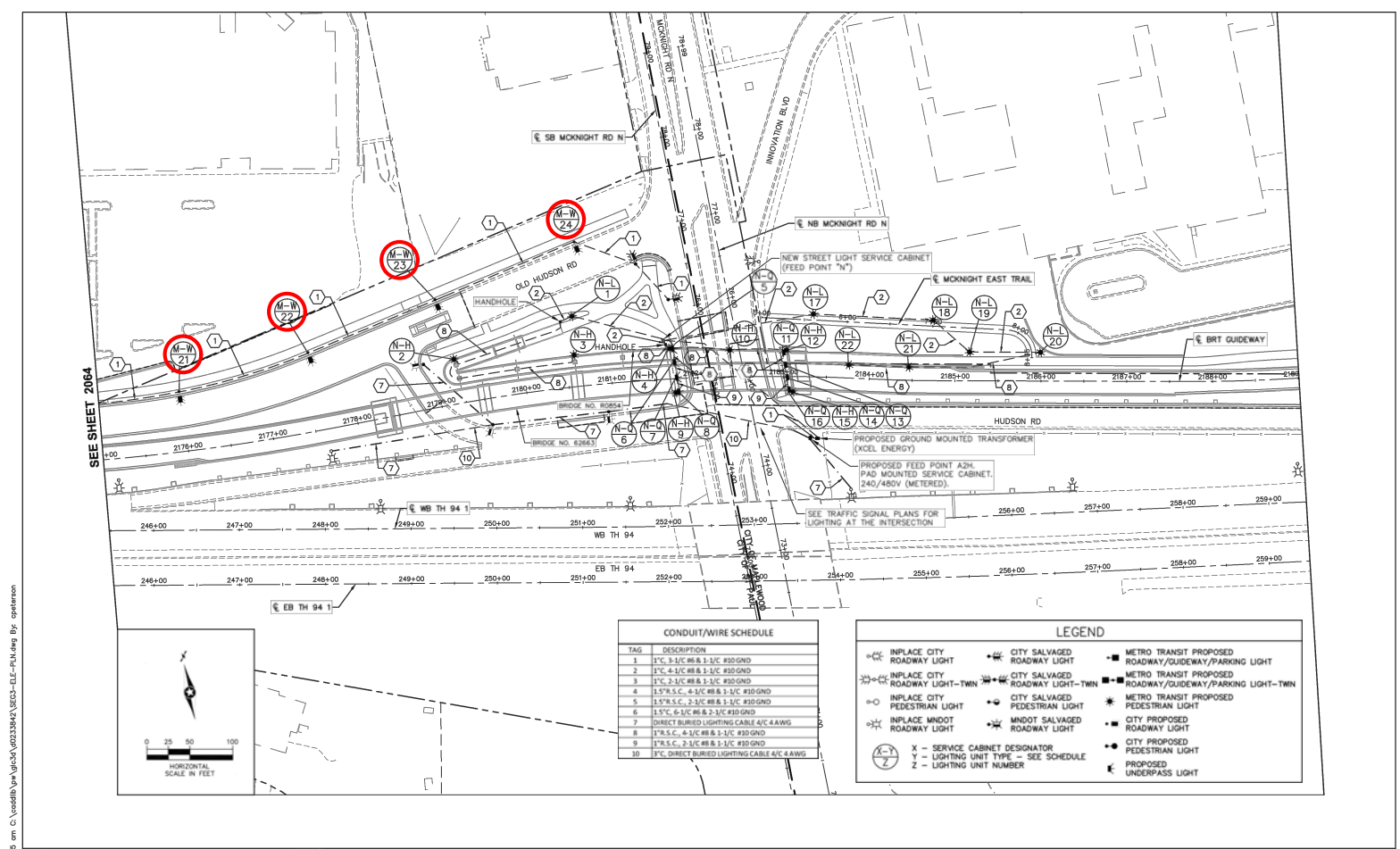
ALL OTHER WORK NOT SHOWN IN RED (PAVEMENT REPLACEMENT, TRAFFIC CONTROL, AND OTHER TEMPORARY MEASURES) ARE ASSUMED TO BE 100% GBRT PROJECT COSTS.

SEE SEQ FOR SEPERATE COST ESTIMATES






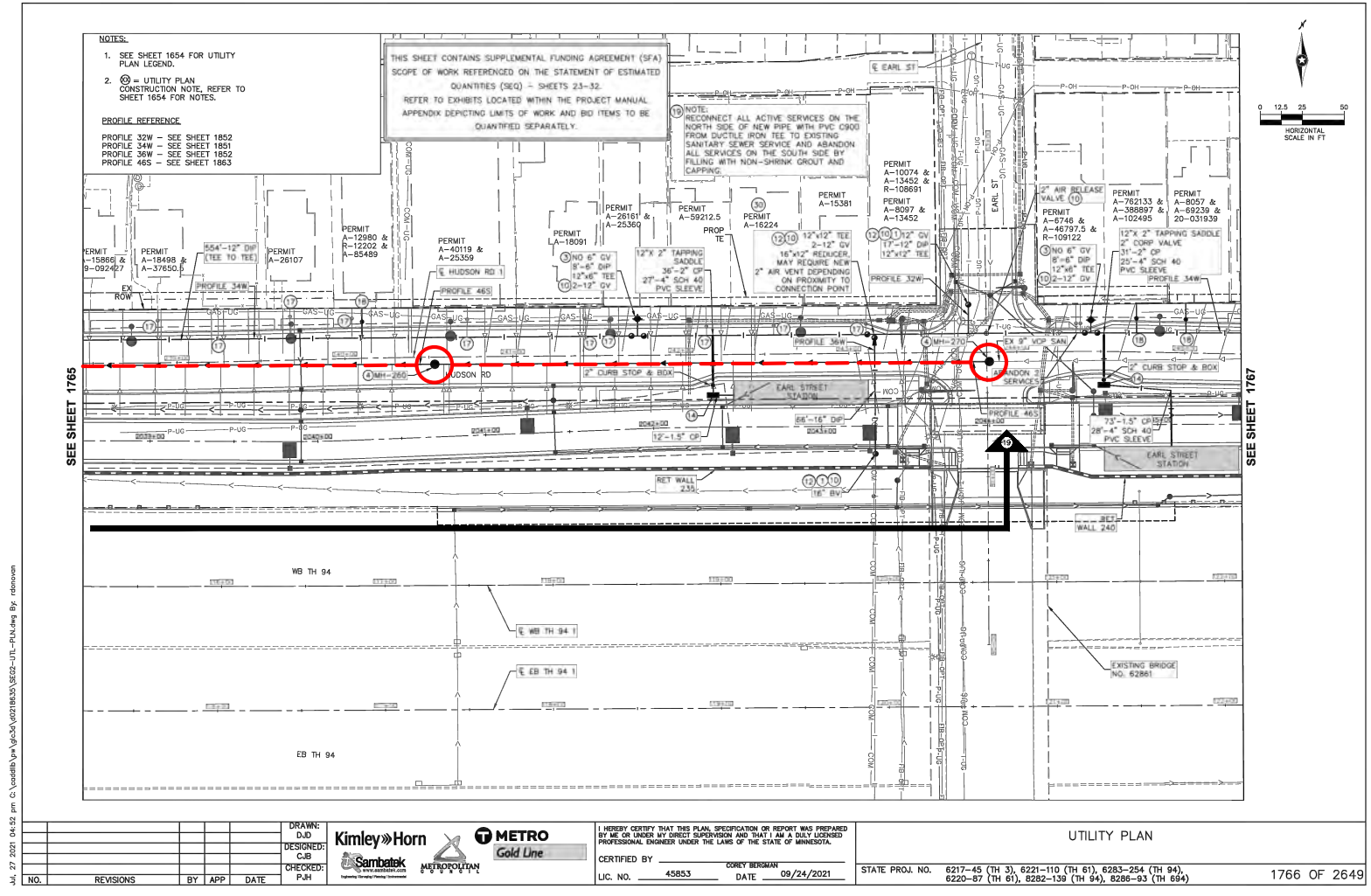
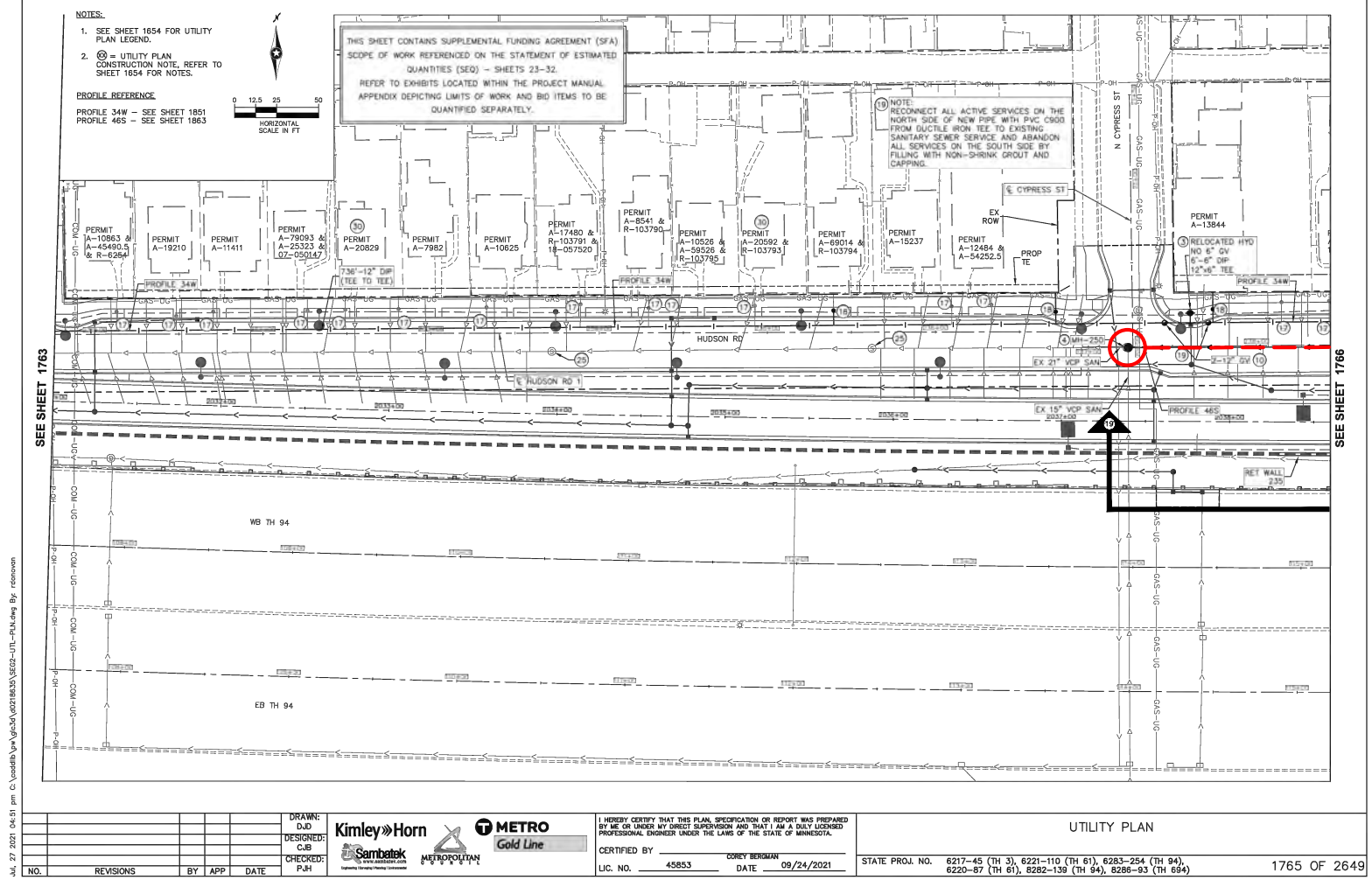
DRAWN: BMW				I HEREBY CERTIFY THAT THIS PLAN, SPECIFICATION OR REPORT WAS PREPARED BY ME OR UNDER MY DIRECT SUPERVISION AND THAT I AM A DULY LICENSED PROFESSIONAL ENGINEER UNDER THE LAWS OF THE STATE OF MINNESOTA.			
DESIGNED: BKV				LIGHTING PLAN PROPOSED LIGHTING SYSTEMS M/L			
CHECKED: BKV				CERTIFIED BY: BRIAN K'VILLA DATE: 09/24/2021			
NO. REVISIONS BY APP DATE				STATE PROJ. NO. 6217-45 (TH 3), 6221-110 (TH 61), 6283-254 (TH 94), 6220-87 (TH 61), 6282-139 (TH 94), 8286-93 (TH 694)			
				2065 OF 2649			



DRAWN: BMW				I HEREBY CERTIFY THAT THIS PLAN, SPECIFICATION OR REPORT WAS PREPARED BY ME OR UNDER MY DIRECT SUPERVISION AND THAT I AM A DULY LICENSED PROFESSIONAL ENGINEER UNDER THE LAWS OF THE STATE OF MINNESOTA.			
DESIGNED: BKV				LIGHTING PLAN PROPOSED LIGHTING SYSTEMS M/L			
CHECKED: BKV				CERTIFIED BY: BRIAN K'VILLA DATE: 09/24/2021			
NO. REVISIONS BY APP DATE				STATE PROJ. NO. 6217-45 (TH 3), 6221-110 (TH 61), 6283-254 (TH 94), 6220-87 (TH 61), 6282-139 (TH 94), 8286-93 (TH 694)			
				2066 OF 2649			

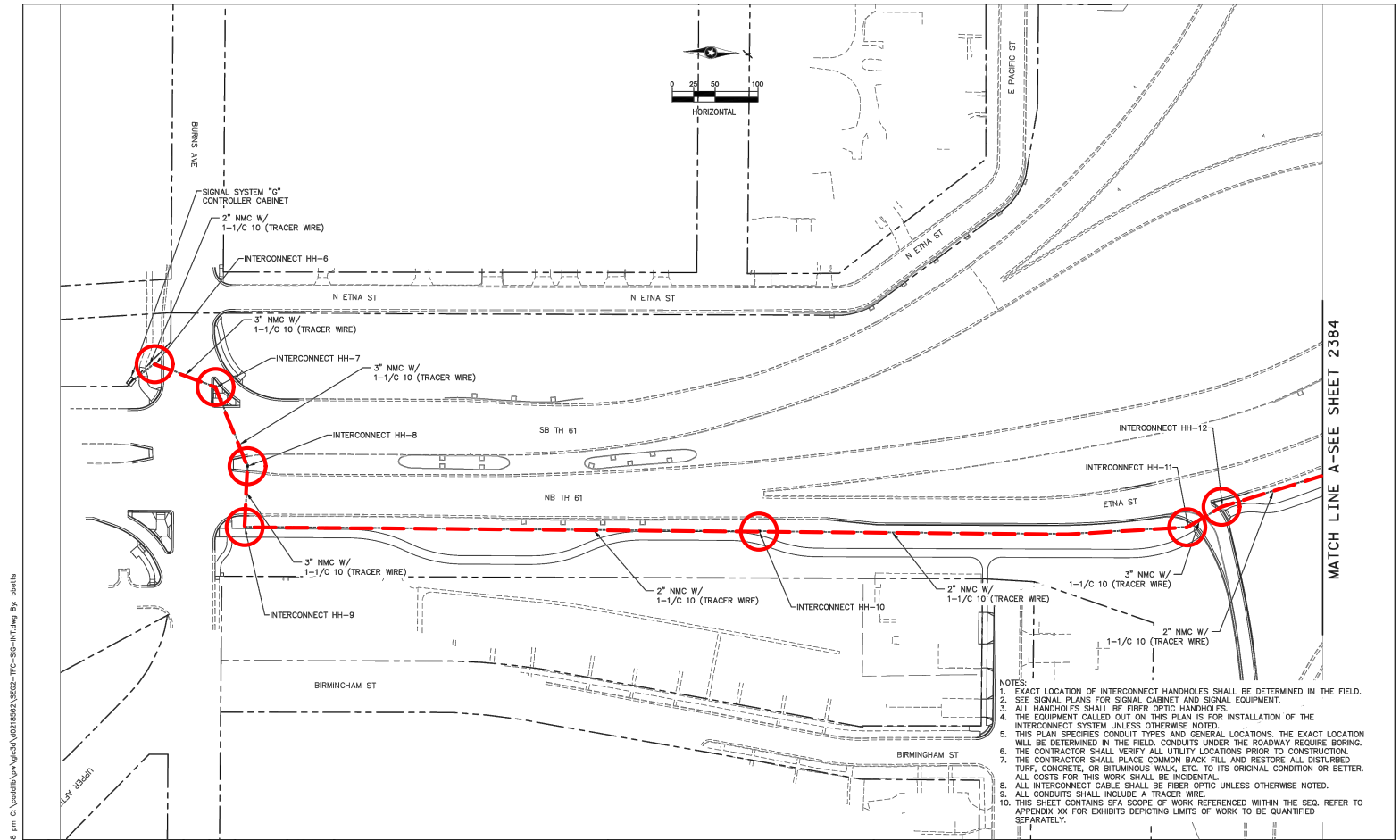
ST. PAUL SFA 2: STREET LIGHTING UPDATES (3 OF 3)

<p>LEGEND</p>  SFA WORK - LIGHTING	<p>NOTES</p> <p>ALL SFA WORK (SHOWN IN RED) IS ASSUMED TO BE 100% CITY OF ST. PAUL AND INCLUDED IN THE SFA CONSTRUCTION COST INCLUDING:</p> <ul style="list-style-type: none"> -STREET LIGHTING -5% FACTOR TO COVER MOBILIZATION COSTS <p>ALL OTHER WORK NOT SHOWN IN RED (PAVEMENT REPLACEMENT, TRAFFIC CONTROL, AND OTHER TEMPORARY MEASURES) ARE ASSUMED TO BE 100% GBRT PROJECT COSTS.</p> <p>SEE SEQ FOR SEPERATE COST ESTIMATES</p>
---	---



ST. PAUL SFA 3: TWIN SANITARY SEWER REPLACEMENT (1 OF 1)

LEGEND		NOTES
	SFA WORK - MANHOLE	ALL SFA WORK (SHOWN IN RED) IS ASSUMED TO BE 100% CITY OF ST. PAUL AND INCLUDED IN THE SFA CONSTRUCTION COST INCLUDING: -OLD SANITARY SEWER PIPE REMOVALS -NEW SANITARY SEWER PIPE -MANHOLES -SEWER SERVICE CONNECTIONS TO BUILDINGS -5% FACTOR TO COVER MOBILIZATION COSTS
	SFA WORK - PIPE	
	EXTENTS OF SFA SANITARY SEWER REPLACEMENT	ALL OTHER WORK NOT SHOWN IN RED (PAVEMENT REPLACEMENT, TRAFFIC CONTROL, AND OTHER TEMPORARY MEASURES) ARE ASSUMED TO BE 100% GBRT PROJECT COSTS.
		SEE SEQ FOR SEPERATE COST ESTIMATES



NO.	REVISIONS	BY	APP	DATE

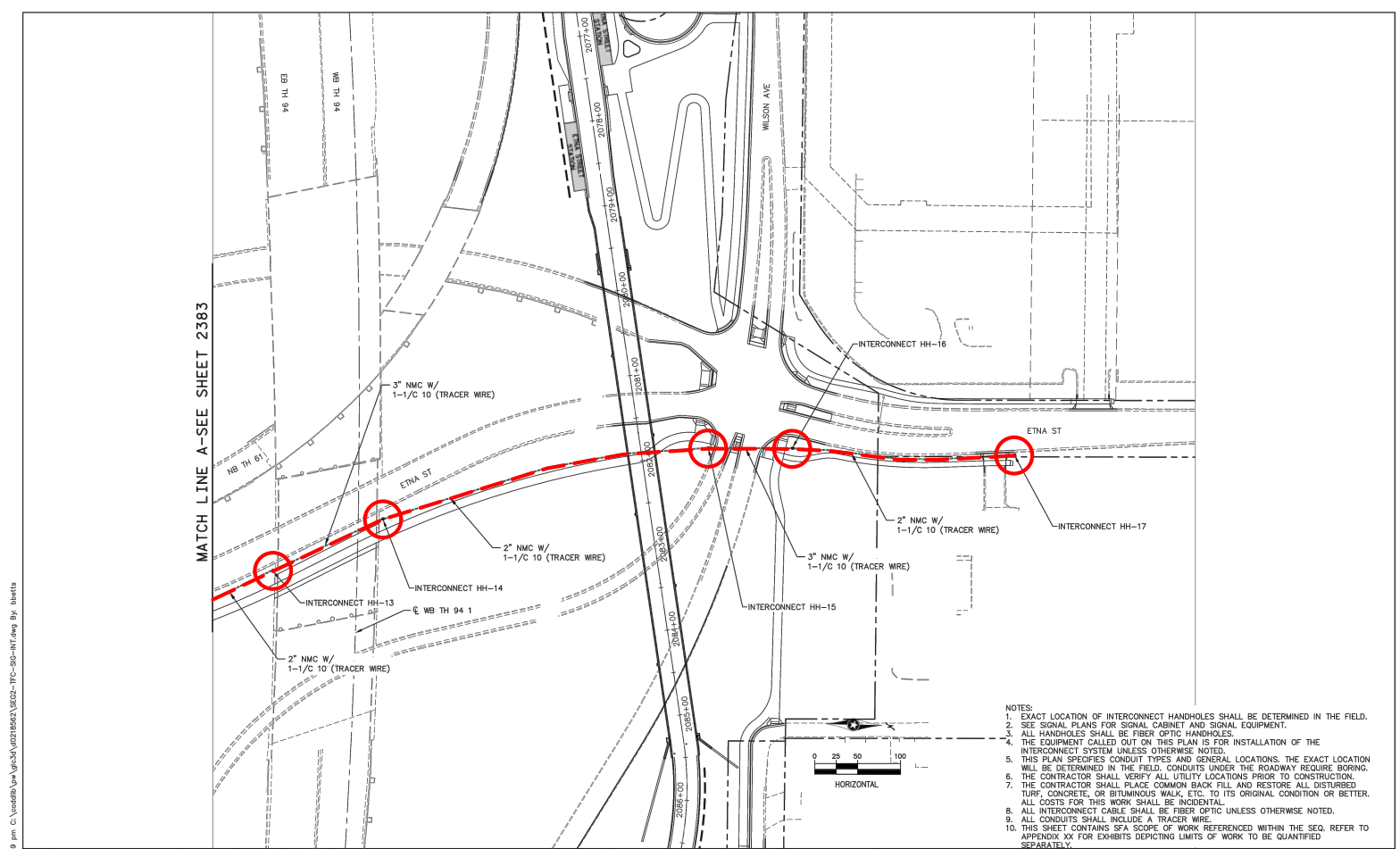
DRAWN: BMSB
 DESIGNED: NAP
 CHECKED: ASP

Kimley-Horn
SRF
METRO Gold Line
METROPOLITAN

I HEREBY CERTIFY THAT THIS PLAN, SPECIFICATION OR REPORT WAS PREPARED BY ME OR UNDER MY DIRECT SUPERVISION AND THAT I AM A DULY LICENSED PROFESSIONAL ENGINEER UNDER THE LAWS OF THE STATE OF MINNESOTA.
 CERTIFIED BY: JORDAN S. POTTER
 LIC. NO.: 42785 DATE: 09/24/2021

STATE PROJ. NO. 6283-254 (TH 94), 8282-139 (TH 94), 6221-110 (TH 61), 6217-45 (TH 3), 8286-93 (TH 694)

2383 OF 2649



NO.	REVISIONS	BY	APP	DATE

DRAWN: BMSB
 DESIGNED: NAP
 CHECKED: ASP

Kimley-Horn
SRF
METRO Gold Line
METROPOLITAN

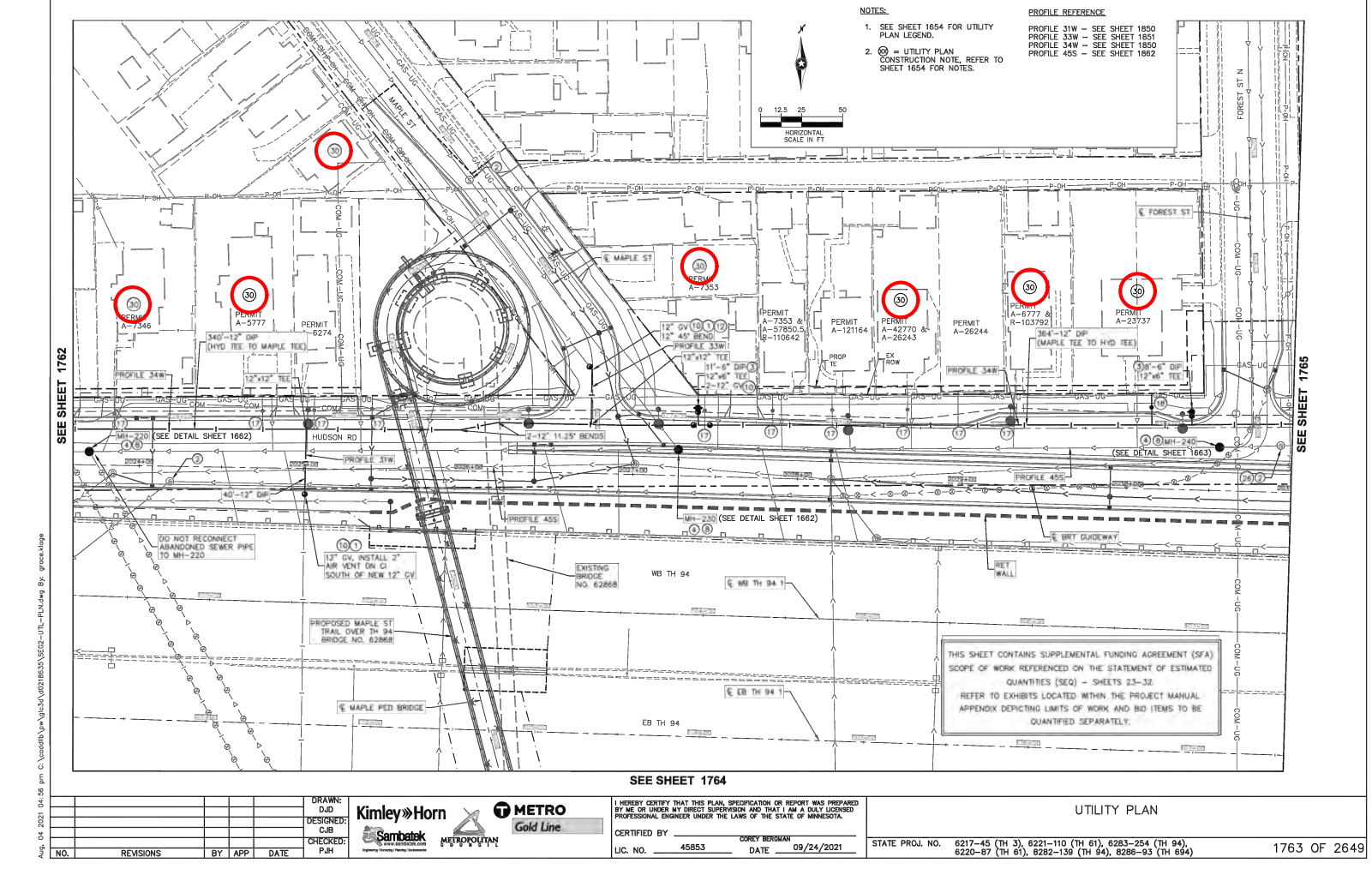
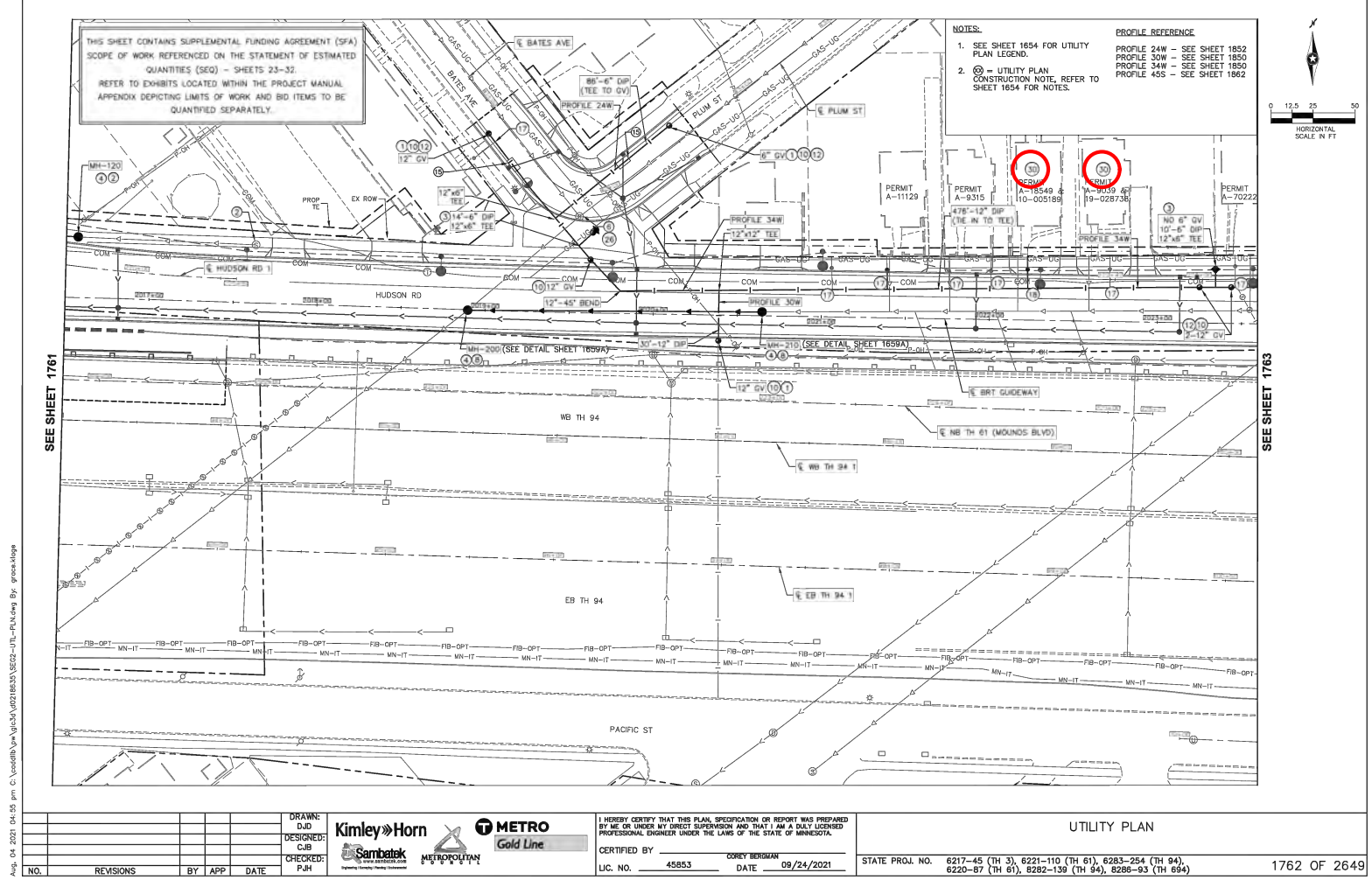
I HEREBY CERTIFY THAT THIS PLAN, SPECIFICATION OR REPORT WAS PREPARED BY ME OR UNDER MY DIRECT SUPERVISION AND THAT I AM A DULY LICENSED PROFESSIONAL ENGINEER UNDER THE LAWS OF THE STATE OF MINNESOTA.
 CERTIFIED BY: JORDAN S. POTTER
 LIC. NO.: 42785 DATE: 09/24/2021

STATE PROJ. NO. 6283-254 (TH 94), 8282-139 (TH 94), 6221-110 (TH 61), 6217-45 (TH 3), 8286-93 (TH 694)

2384 OF 2649

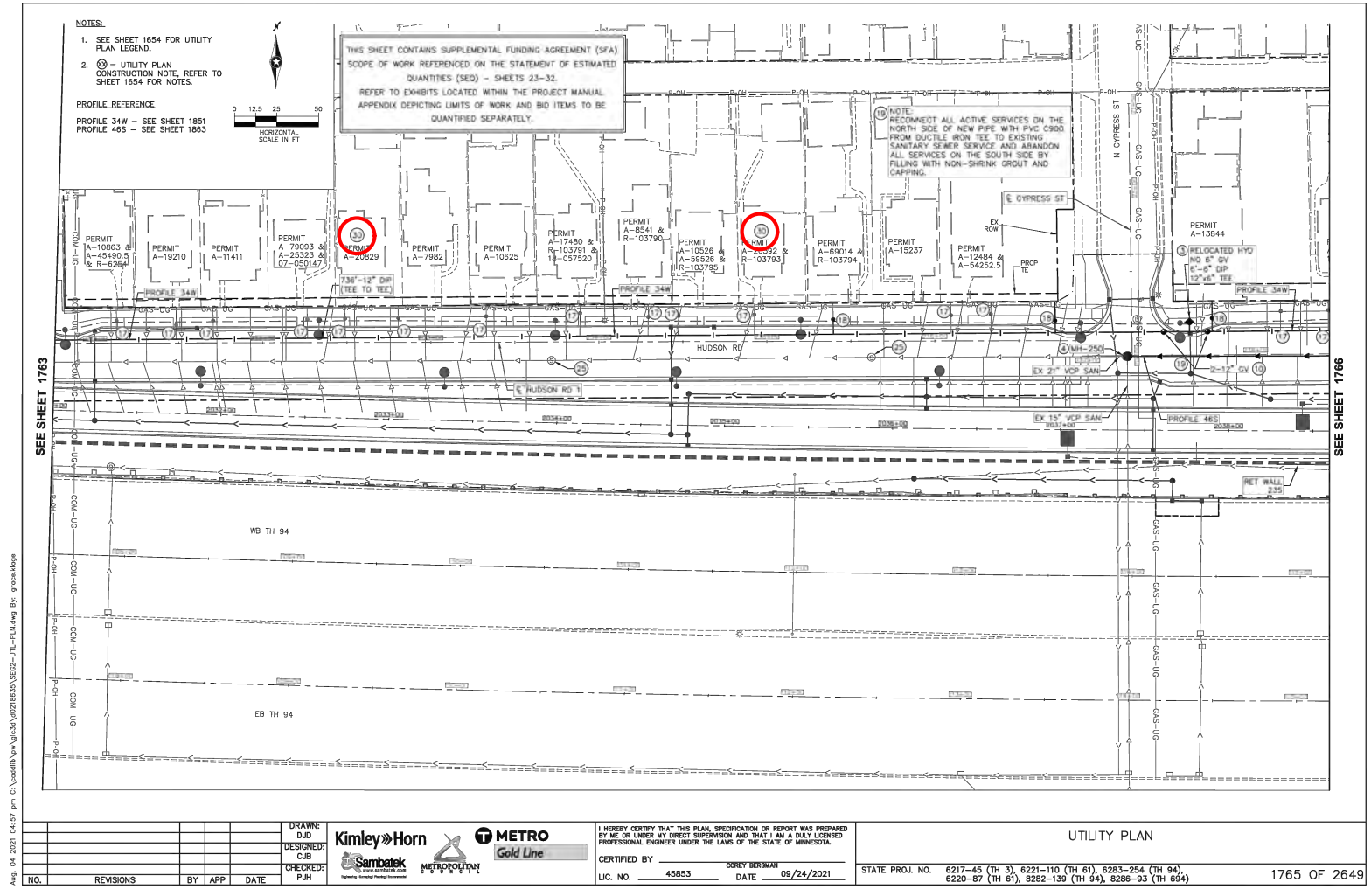
ST. PAUL SFA 4: TH 61/ETNA/BURNS INTERCONNECT CONDUIT (1 OF 1)

LEGEND		NOTES
	SFA WORK - INTERCONNECT CONDUIT	
	SFA WORK - HANDHOLE	ALL SFA WORK (SHOWN IN RED) IS ASSUMED TO BE 100% CITY OF ST. PAUL AND INCLUDED IN THE SFA CONSTRUCTION COST INCLUDING: -INTERCONNECT CONDUIT -PROPOSED INTERCONNECT HANDHOLE -5% FACTOR TO COVER MOBILIZATION COSTS ALL OTHER WORK NOT SHOWN IN RED (PAVEMENT REPLACEMENT, TRAFFIC CONTROL, AND OTHER TEMPORARY MEASURES) ARE ASSUMED TO BE 100% GBRT PROJECT COSTS.



DRAWN: DUD					I HEREBY CERTIFY THAT THIS PLAN, SPECIFICATION OR REPORT WAS PREPARED BY ME OR UNDER MY DIRECT SUPERVISION AND THAT I AM A DAILY LICENSED PROFESSIONAL ENGINEER UNDER THE LAWS OF THE STATE OF MINNESOTA.	UTILITY PLAN		STATE PROJ. NO. 6217-45 (TH 3), 6221-110 (TH 61), 6283-254 (TH 94), 6220-87 (TH 61), 6282-139 (TH 94), 6286-93 (TH 894)	1762 OF 2649
DESIGNED: CJB						CERTIFIED BY: OSREY BERGMAN	DATE: 09/24/2021		
CHECKED: PAM						LIC. NO.: 45853	DATE: 09/24/2021		

DRAWN: DUD					I HEREBY CERTIFY THAT THIS PLAN, SPECIFICATION OR REPORT WAS PREPARED BY ME OR UNDER MY DIRECT SUPERVISION AND THAT I AM A DAILY LICENSED PROFESSIONAL ENGINEER UNDER THE LAWS OF THE STATE OF MINNESOTA.	UTILITY PLAN		STATE PROJ. NO. 6217-45 (TH 3), 6221-110 (TH 61), 6283-254 (TH 94), 6220-87 (TH 61), 6282-139 (TH 94), 6286-93 (TH 894)	1763 OF 2649
DESIGNED: CJB						CERTIFIED BY: OSREY BERGMAN	DATE: 09/24/2021		
CHECKED: PAM						LIC. NO.: 45853	DATE: 09/24/2021		



ST. PAUL SFA 5: SANITARY SEWER SERVICE REPLACEMENT & CLEANING / TELEVISIONING OF SANITARY SEWER (1 OF 2)

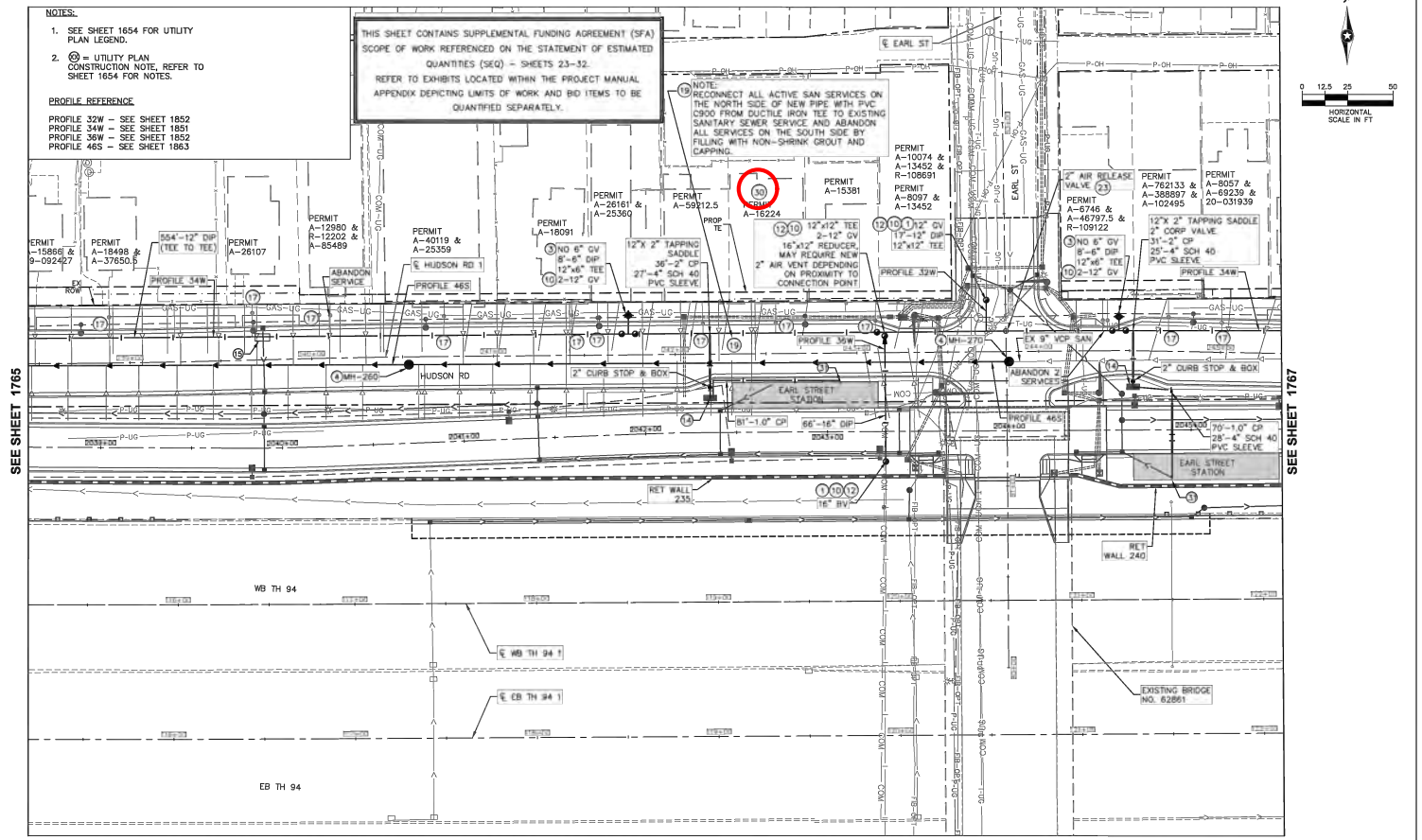
LEGEND	NOTES
(S)	SFA WORK - FULL SEWER REPLACEMENT
(30)	REPLACE SANITARY SEWER SERVICE PER SFA 5, AS SHOWN IN TABLE ON SHEET 1664.

ALL SFA WORK (SHOWN IN RED) IS ASSUMED TO BE 100% CITY OF ST. PAUL AND INCLUDED IN THE SFA CONSTRUCTION COST INCLUDING:
 -SANITARY SEWER REPLACEMENTS
 -SANITARY SEWER CONNECTIONS
 -CLEANING AND TELEVISIONING OF ALL SANITARY SEWER (SEE APPENDIX)
 -5% FACTOR TO COVER MOBILIZATION COSTS

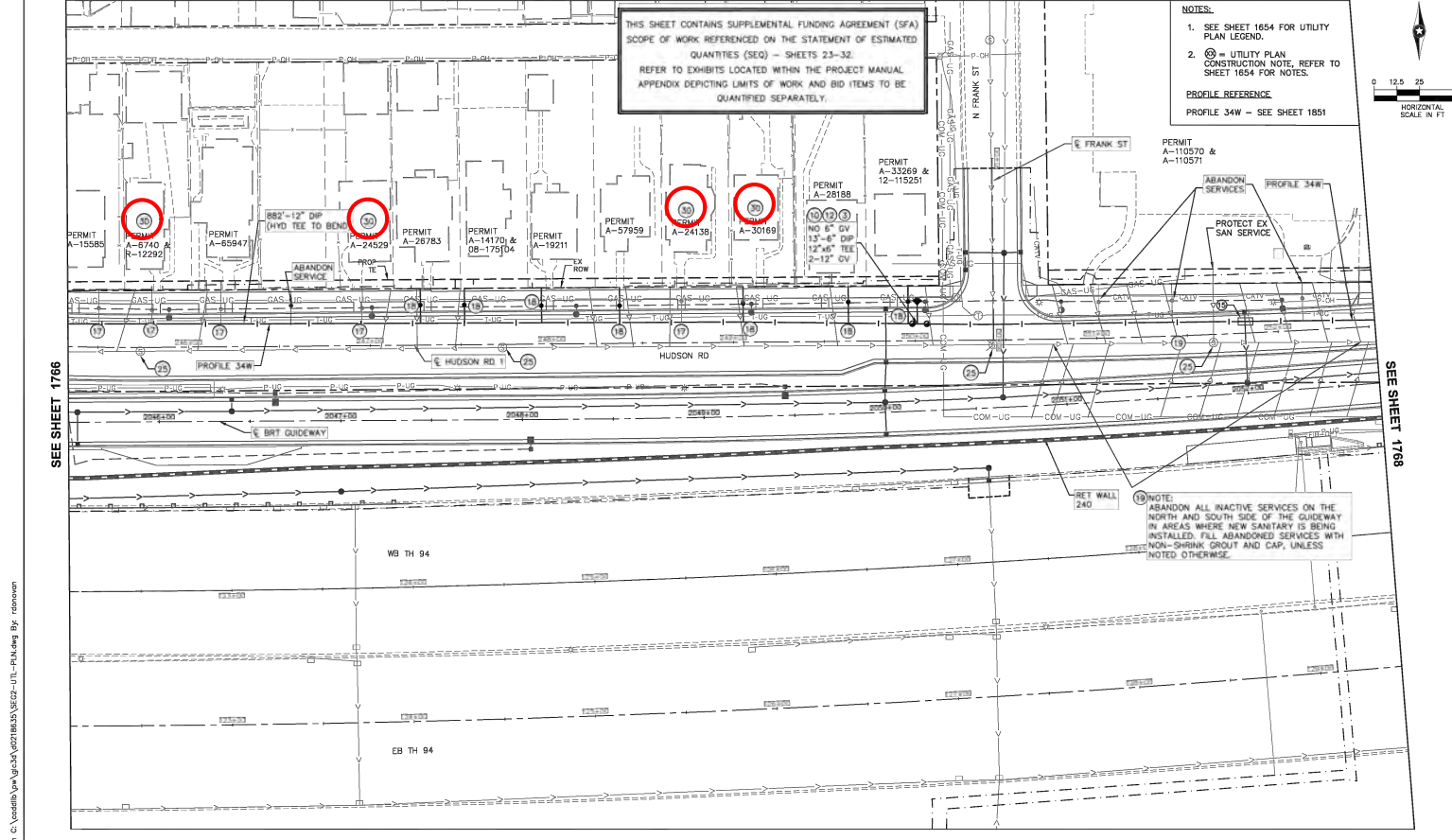
ALL OTHER WORK NOT SHOWN IN RED (PAVEMENT REPLACEMENT, TRAFFIC CONTROL, AND OTHER TEMPORARY MEASURES) ARE ASSUMED TO BE 100% GBRT PROJECT COSTS.

SEE SEQ FOR SEPERATE COST ESTIMATES

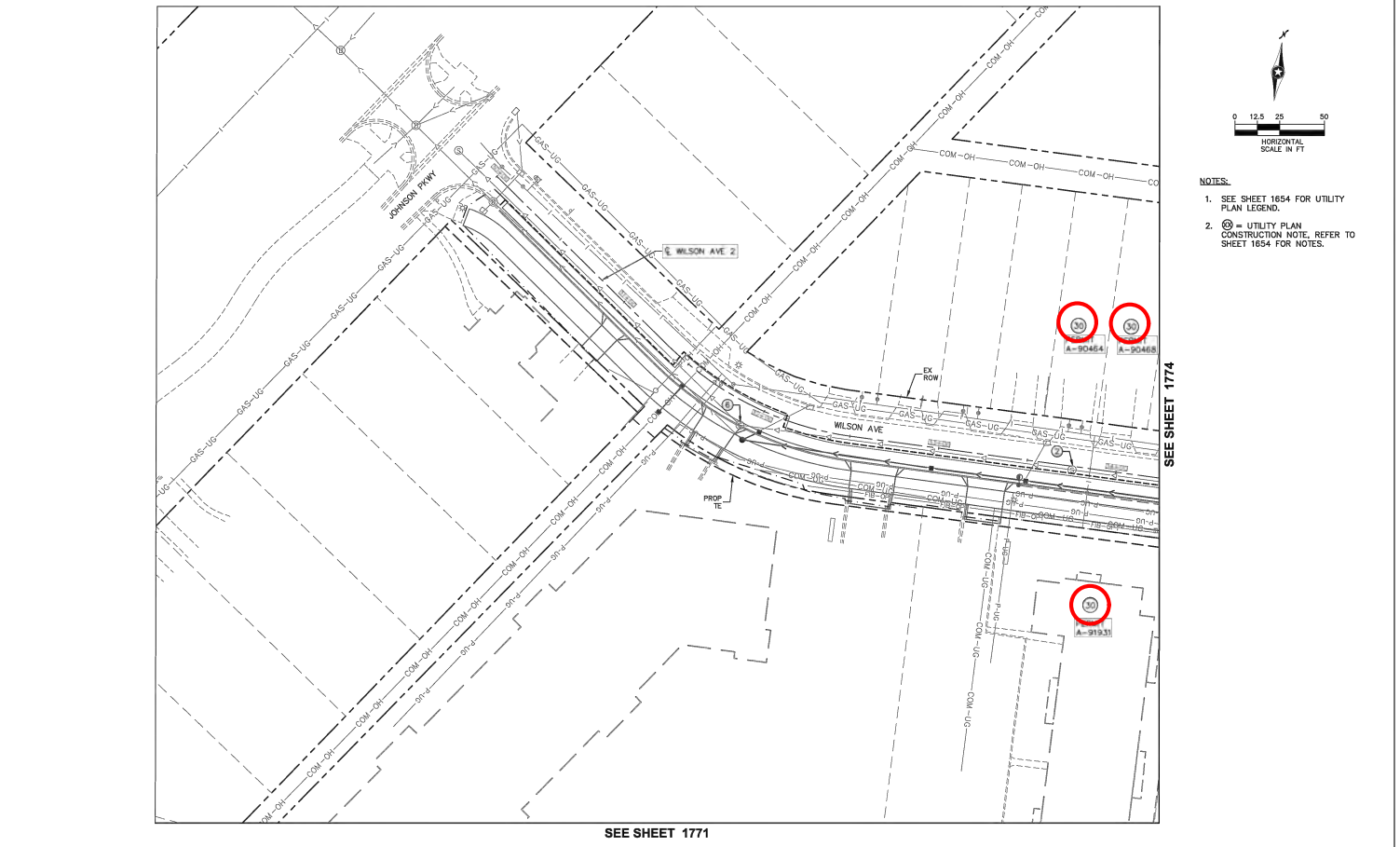
DRAWN: DUD					I HEREBY CERTIFY THAT THIS PLAN, SPECIFICATION OR REPORT WAS PREPARED BY ME OR UNDER MY DIRECT SUPERVISION AND THAT I AM A DAILY LICENSED PROFESSIONAL ENGINEER UNDER THE LAWS OF THE STATE OF MINNESOTA.	UTILITY PLAN		STATE PROJ. NO. 6217-45 (TH 3), 6221-110 (TH 61), 6283-254 (TH 94), 6220-87 (TH 61), 6282-139 (TH 94), 6286-93 (TH 894)	1765 OF 2649
DESIGNED: CJB						CERTIFIED BY: OSREY BERGMAN	DATE: 09/24/2021		
CHECKED: PAM						LIC. NO.: 45853	DATE: 09/24/2021		



DRAWN: DLD				I HEREBY CERTIFY THAT THIS PLAN, SPECIFICATION OR REPORT WAS PREPARED BY ME OR UNDER MY DIRECT SUPERVISION AND THAT I AM A DULY LICENSED PROFESSIONAL ENGINEER UNDER THE LAWS OF THE STATE OF MINNESOTA.			UTILITY PLAN			
DESIGNED: C.B					CERTIFIED BY: <i>Corey Bergman</i>			STATE PROJ. NO. 6217-45 (TH 3), 6221-110 (TH 61), 6283-254 (TH 94), 6220-87 (TH 61), 6282-139 (TH 94), 6286-93 (TH 694)		
CHECKED: P.M					LIC. NO. 45853 DATE 09/24/2021			1766 OF 2649		
NO.	REVISIONS	BY	APP	DATE						



DRAWN: DLD				I HEREBY CERTIFY THAT THIS PLAN, SPECIFICATION OR REPORT WAS PREPARED BY ME OR UNDER MY DIRECT SUPERVISION AND THAT I AM A DULY LICENSED PROFESSIONAL ENGINEER UNDER THE LAWS OF THE STATE OF MINNESOTA.			UTILITY PLAN			
DESIGNED: C.B					CERTIFIED BY: <i>Corey Bergman</i>			STATE PROJ. NO. 6217-45 (TH 3), 6221-110 (TH 61), 6283-254 (TH 94), 6220-87 (TH 61), 6282-139 (TH 94), 6286-93 (TH 694)		
CHECKED: P.M					LIC. NO. 45853 DATE 09/24/2021			1767 OF 2649		
NO.	REVISIONS	BY	APP	DATE						



DRAWN: DLD				I HEREBY CERTIFY THAT THIS PLAN, SPECIFICATION OR REPORT WAS PREPARED BY ME OR UNDER MY DIRECT SUPERVISION AND THAT I AM A DULY LICENSED PROFESSIONAL ENGINEER UNDER THE LAWS OF THE STATE OF MINNESOTA.			UTILITY PLAN			
DESIGNED: C.B					CERTIFIED BY: <i>Corey Bergman</i>			STATE PROJ. NO. 6217-45 (TH 3), 6221-110 (TH 61), 6283-254 (TH 94), 6220-87 (TH 61), 6282-139 (TH 94), 6286-93 (TH 694)		
CHECKED: P.M					LIC. NO. 45853 DATE 09/24/2021			1772 OF 2649		
NO.	REVISIONS	BY	APP	DATE						

ST. PAUL SFA 5: SANITARY SEWER SERVICE REPLACEMENT & CLEANING / TELEVISIONING OF SANITARY SEWER (2 OF 2)

LEGEND		NOTES
	SFA WORK - FULL SEWER REPLACEMENT	
	REPLACE SANITARY SEWER SERVICE PER SFA 5, AS SHOWN IN TABLE ON SHEET 1664.	<p>ALL SFA WORK (SHOWN IN RED) IS ASSUMED TO BE 100% CITY OF ST. PAUL AND INCLUDED IN THE SFA CONSTRUCTION COST INCLUDING:</p> <ul style="list-style-type: none"> -SANITARY SEWER REPLACEMENTS -SANITARY SEWER CONNECTIONS -CLEANING AND TELEVISIONING OF ALL SANITARY SEWER (SEE APPENDIX) -5% FACTOR TO COVER MOBILIZATION COSTS <p>ALL OTHER WORK NOT SHOWN IN RED (PAVEMENT REPLACEMENT, TRAFFIC CONTROL, AND OTHER TEMPORARY MEASURES) ARE ASSUMED TO BE 100% GBRT PROJECT COSTS.</p> <p>SEE SEQ FOR SEPERATE COST ESTIMATES</p>