

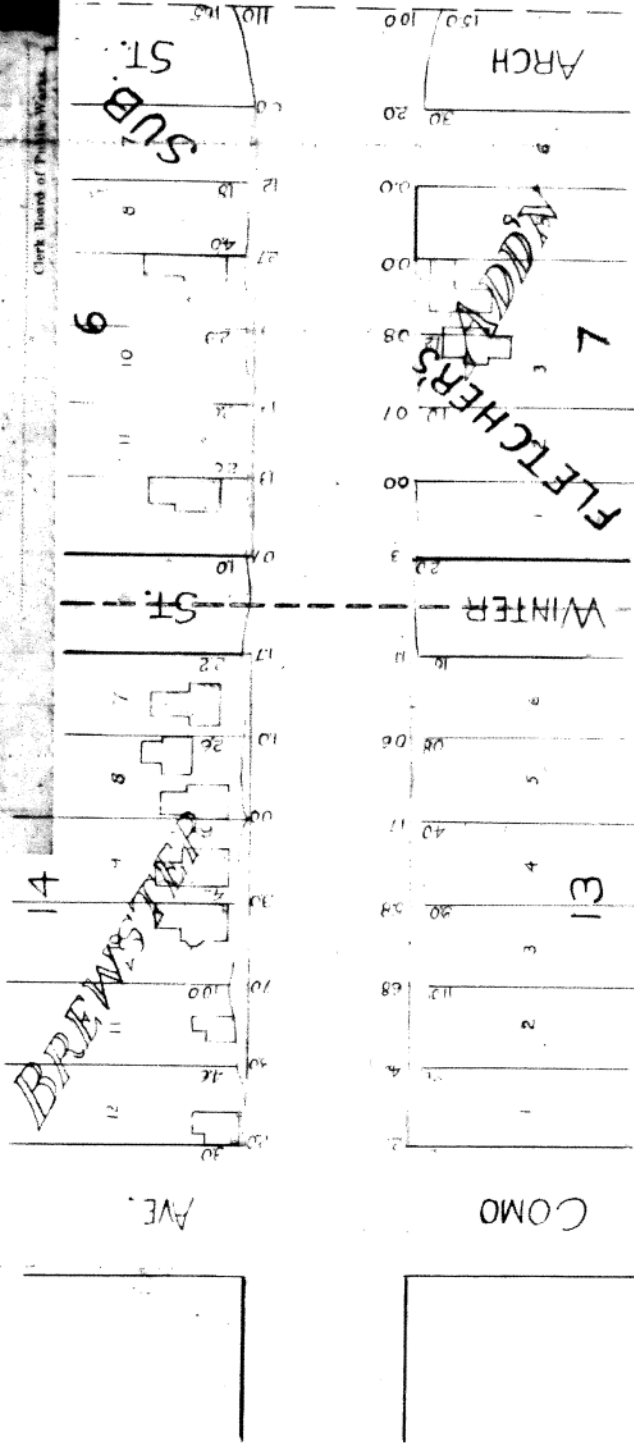
Exhibit A

Book L of Plans,
Page 20

ST. PAUL, MINN.
This is to certify that this is a true and correct plan of the easement for slopes on **CAPITOL BOULEVARD** from **COMO AVE.** to **ARCH ST.** the assessment for which was confirmed by the Board of Public Works in and for the corporation of the City of St. Paul, Minnesota, on the day of _____ The portions colored red show the easement condemned on each piece and parcel of land.

President Board of Public Works
Clerk Board of Public Works

Scale 1"=100'



Indicates Cut.

Fill

The figures on the lot lines shows the horizontal distances to which the slopes extend from the street lines.

The figures at the lot corners show the vertical distances from the original surface at said corners to the grade line of street

C.N.B 1197.

K

244107

of Plan
Walter Bonerick
to
The Subee

STATE OF MINNESOTA,
County of Ramsey, ss.

Office of the Register of Deeds
This is to certify that the within instrument
was filed for record in the office at St. Paul,
on the 4th day of March
A. D. 1907 at 2:30 o'clock P.M., and that the
same was duly recorded in Book
of Chancery page 72
By Wm. J. Agard Register of Deeds.
Deputy.