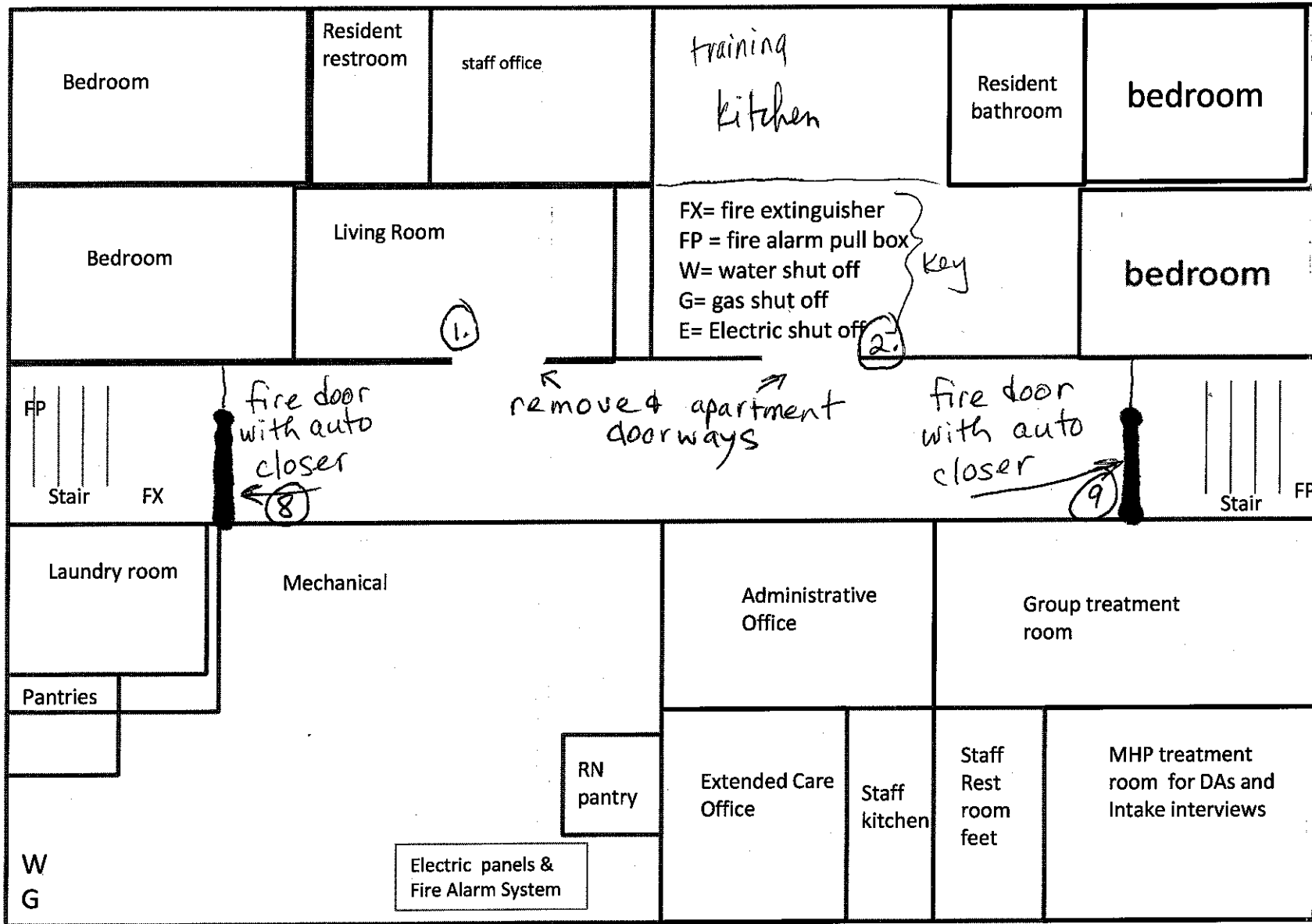
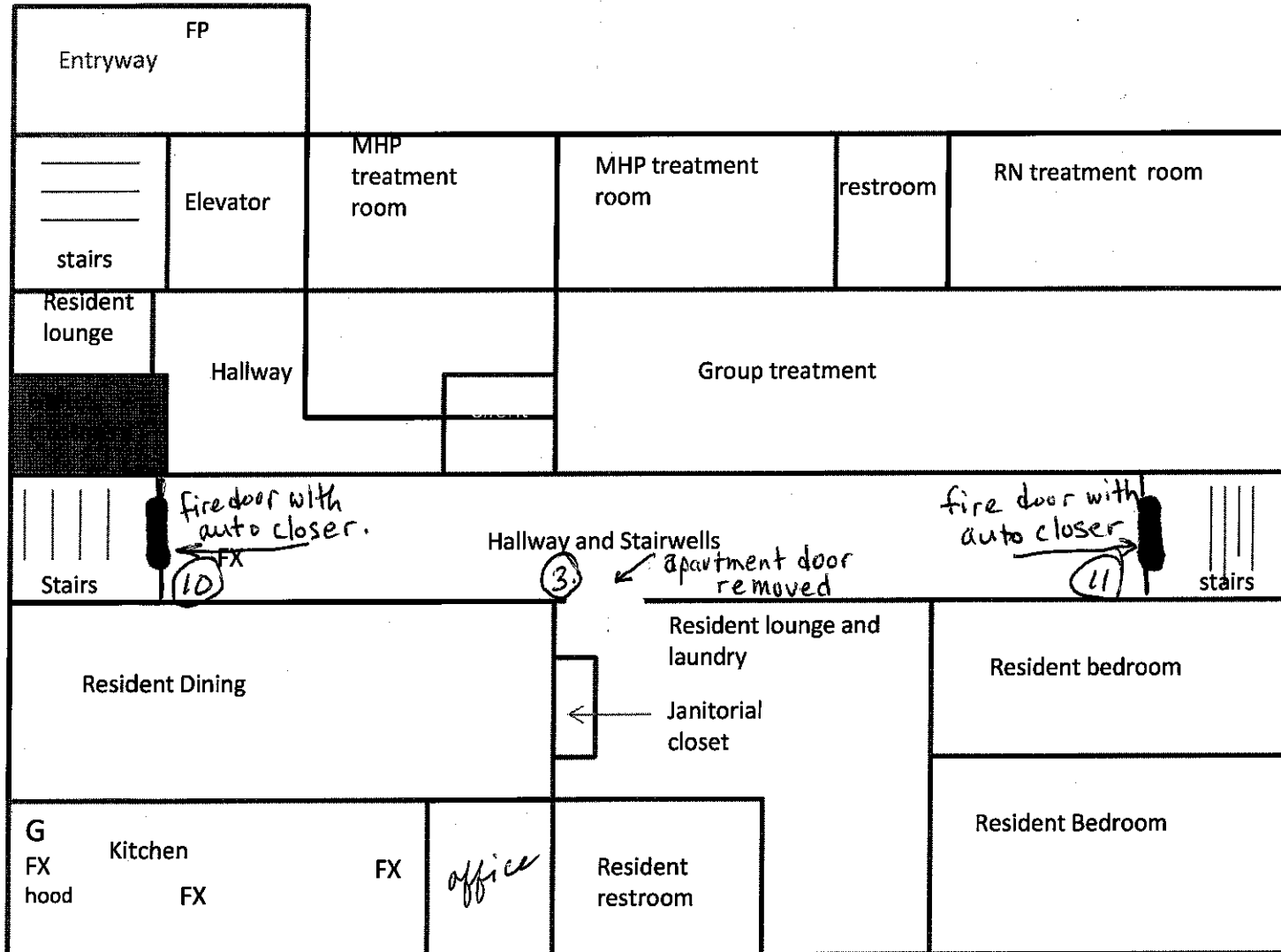


Community Options St Paul 1st floor



There are 7 doors marked 1-7 where the original "apartment" doors were removed. There are six fire doors with auto closure systems that function when the fire alarm is engaged. 8-13

Community Options St Paul 2nd floor



Key:

FX= fire extinguisher

G= gas shut off system

FX hood= stove fire suppression system

FP= Fire alarm pull box

Key:
FX= fire
extinguisher

Community Options St Paul 3rd floor

