

Department of Public Works 5-Year Capital Plan 2026-2030



SAINT PAUL
PUBLIC WORKS

November 12, 2025

STPAUL.GOV



Outline

- Draft 5-Year Capital Plan 2026-2030
- Overview of Map for 2026-2030
- Funding Sources for Public Works
- 2025 Projects
- 2026 Projects
- Common Cent



SAINT PAUL PUBLIC WORKS

2026 FIVE YEAR CAPITAL PLAN

Draft 10/28/25

This document shows projects approved for 2026 and planned for 2027 to 2030. The 5-year Plan is proposed by the Department of Public Works and reviewed and adopted annually by the City Council. All information provided for 2027 to 2030 is preliminary and subject to change.

| 2026 | 2027 | 2028 | 2029 | 2030 |
|--|--|--|---|--|
| SAINT PAUL STREETS PROGRAM \$15,500,000 Wheelock/Grotto Residential Phase 2 12,500,000 Residential & Arterial Mill & Overlay Program 3,000,000 Ivy/Birmingham | SAINT PAUL STREETS \$18,230,000 Hoyt/Birmingham Phase 1 15,230,000 Residential & Arterial Mill & Overlay Program 3,000,000 TBD from the following as funding allows: Arlington/Ruth, Lafond/Grotto, Page/Cherokee & Morgan/Edgumbe * Financing over \$15.5M TBD | SAINT PAUL STREETS \$17,320,000 Hoyt/Birmingham Phase 2 14,320,000 Residential & Arterial Mill & Overlay Program 3,000,000 TBD from the following as funding allows: Arlington/Ruth, Lafond/Grotto, Page/Cherokee & Morgan/Edgumbe * Financing over \$15.5M TBD | SAINT PAUL STREETS \$23,600,000 Page/Hall Phase 1 18,300,000 Randolph Bridge 2,300,000 Residential & Arterial Mill & Overlay Program 3,000,000 TBD from the following as funding allows: Arlington/Ruth, Lafond/Grotto, Page/Cherokee & Morgan/Edgumbe * Financing over \$15.5M TBD | SAINT PAUL STREETS PROGRAM \$21,200,000 Page/Hall Phase 2 18,200,000 Residential & Arterial Mill & Overlay Program 3,000,000 TBD from the following as funding allows: Arlington/Ruth, Lafond/Grotto, Page/Cherokee & Morgan/Edgumbe * Financing over \$15.5M TBD |
| MUNICIPAL STATE AID \$11,076,350 Chelsea Heights SRTS 800,000 Maryland Traffic Signal Modernization 706,350 Minnehaha - Payne to E7th (Pre-con) 1,500,000 Payne Pedestrian Improvements 375,000 Randolph and Lexington Sidewalks 130,000 Wabasha - 7th to 11th (Pre-con) 1,500,000 Jackson - Arlington to Wheelock Ped Imps (County) 100,000 Jackson - Rose to Arlington (County) 1,300,000 Rice St - Pennsylvania to Co Rd B (County) 2,000,000 I35 E Bridge over Shepard Signals (MnDOT) 400,000 John Ireland Bridge over 94 (MnDOT) 700,000 Programs: 1,565,000 Lighting Improvements 500,000 MSA Contingency 300,000 RR Crossing Safety Improvements 40,000 Ramsey Co Traffic Signals 500,000 SPS Traffic Signals on Arterials 100,000 Signalized Intersection Safety Improvements 125,000 | MUNICIPAL STATE AID \$16,040,845 CCB Kellogg Ph 3 - W7th to John Ireland 4,879,504 CCB St Peter - 10th to Rice 3,701,341 Minnehaha - Payne to E7th 1,440,000 Wabasha - 7th to 11th 1,505,000 Jackson - Arlington to Wheelock Ped Imps (County) 200,000 Larpenteur - E Shore Drive to Flandrau (County) 350,000 Rice St - John Ireland to Pennsylvania (County) 900,000 Robert M&O - Fillmore to Annapolis (MnDOT) 1,500,000 Programs: 1,565,000 Lighting Improvements 500,000 MSA Contingency 300,000 RR Crossing Safety Improvements 40,000 Ramsey Co Traffic Signals 500,000 SPS Traffic Signals on Arterials 100,000 Signalized Intersection Safety Improvements 125,000 | MUNICIPAL STATE AID \$13,129,142 Jackson St - Pennsylvania to Acker (County) 3,200,000 Randolph - W7th to Shepard (County) 663,000 Rice St - Pennsylvania to Co Rd B (County) 2,100,000 Eustis/Cromwell - Territorial to Wabash (MnDOT) 900,000 TH 5/W7th - Munster to St. Clair (MnDOT) 1,750,000 TH 280 (MnDOT) 2,951,142 Programs: 1,565,000 Lighting Improvements 500,000 MSA Contingency 300,000 RR Crossing Safety Improvements 40,000 Ramsey Co Traffic Signals 500,000 SPS Traffic Signals on Arterials 100,000 Signalized Intersection Safety Improvements 125,000 | MUNICIPAL STATE AID \$25,795,000 St. Peter Ph 1 - Kellogg to 5th 9,630,000 St. Peter Signals @ 4th & 5th 900,000 Wabasha Bridge Enhancements 5,000,000 Dale at Front & Como (County) 1,350,000 Edgerton - Payne to Maryland (County) 300,000 Pennsylvania - Rice to Mississippi (County) 2,500,000 White Bear - Suburban to Stillwater (County) 1,300,000 TH 5/W7th - St. Clair to Olive (MnDOT) 3,250,000 Programs: 1,565,000 Lighting Improvements 500,000 MSA Contingency 300,000 RR Crossing Safety Improvements 40,000 Ramsey Co Traffic Signals 500,000 SPS Traffic Signals on Arterials 100,000 Signalized Intersection Safety Improvements 125,000 | MUNICIPAL STATE AID \$27,885,000 St. Peter Ph 2 - 5th to 10th 16,320,000 St. Peter Signals @ 6th, 7th Pl & Exchange 1,200,000 Wabasha Bridge Enhancements 5,000,000 Edgerton - Maryland to Co Rd B (County) 800,000 White Bear - Stillwater to Maryland (County) 1,500,000 TH 51/Snell - Dayton to TH5/W7th (MnDOT) 1,500,000 Programs: 1,565,000 Lighting Improvements 500,000 MSA Contingency 300,000 RR Crossing Safety Improvements 40,000 Ramsey Co Traffic Signals 500,000 SPS Traffic Signals on Arterials 100,000 Signalized Intersection Safety Improvements 125,000 |
| COMMON CENT PROGRAM \$26,500,000 Earl - Maryland to Minnehaha 10,200,000 Pelham - Franklin to MRB 9,200,000 Arlington - Jackson to Payne (pre-con) 1,300,000 Arlington - Wheelock to Jackson (pre-con) 1,300,000 Earl - Minnehaha to Burns (pre-con) 1,200,000 Maryland - Como to Dale (pre-con) 1,400,000 Summit- MRB to Fairview (pre-con) 1,900,000 | COMMON CENT PROGRAM \$26,410,000 Arlington - Jackson to Payne 11,000,000 Arlington Pedestrian Facilities 1,500,000 Earl - Minnehaha to Burns* 10,060,000 *Includes Earl & 6th Signal & Interconnect \$560,000. East 7th - Clarence to Hazel (pre-con) 1,400,000 Maryland - Dale to Rice (County) (pre-con) 650,000 Summit - Fairview to Hamline (pre-con) 1,800,000 | COMMON CENT PROGRAM \$44,400,000 Arlington - Wheelock to Jackson 10,300,000 Maryland - Como to Dale 12,900,000 Summit- MRB to Fairview 17,200,000 Pre-con for 2030 projects 4,000,000 | COMMON CENT PROGRAM \$40,900,000 East 7th - Clarence to Hazel 12,900,000 Maryland - Dale to Rice (County) 7,800,000 Summit - Fairview to Hamline 16,200,000 Pre-con for 2031 projects 4,000,000 | COMMON CENT PROGRAM \$44,000,000 Cesar Chavez 7,800,000 East 7th - Minnehaha to Clarence 16,200,000 Summit - Hamline to Lexington 4,000,000 Vandalla Bridge Pre-con for 2032 projects |
| *Sewer, water and assessment funding not shown. | *Sewer, water and assessment funding not shown. | *Sewer, water and assessment funding not shown. | *Sewer, water and assessment funding not shown. | *Sewer, water and assessment funding not shown. |
| ARTERIAL MILL & OVERLAYS St. Anthony Ave - Snelling to Marion | ARTERIAL MILL & OVERLAYS Vandalla Commercial Area Selby Pedestrian Improvements | 2028-2030 Arterial Mill & Overlays (as funding allows) Capitol Area St. Clair - Cliff to Victoria Cliff - Smith to St. Clair Forest - Hudson to E 7th Hamline - Como to Hoyt Winfred - Wabasha to Ohio Burr-Tedesco to Minnehaha Burlington Rd - Lower Afton to McKnight Randolph - Cleveland to MRB 6th - Earl to Arcade Victoria - 7th to Benhill | | |
| SIDEWALKS Sidewalk Reconstruction Program (Gen Fund) 1,485,000 Cleveland Sidewalks (TIF) 600,000 | SIDEWALKS Sidewalk Reconstruction Program (Gen Fund) 1,485,000 | SIDEWALKS Sidewalk Reconstruction Program (Gen Fund) 1,485,000 | SIDEWALKS Sidewalk Reconstruction Program (Gen Fund) 1,485,000 | SIDEWALKS Sidewalk Reconstruction Program (Gen Fund) 1,485,000 |
| LOCAL STREET, ALLEY, SEWER & LIGHTING General Fund 400,000 Assessments 150,000 | LOCAL STREET, ALLEY, SEWER & LIGHTING General Fund 0 Assessments 150,000 | LOCAL STREET, ALLEY, SEWER & LIGHTING General Fund 0 Assessments 150,000 | LOCAL STREET, ALLEY, SEWER & LIGHTING General Fund 0 Assessments 150,000 | LOCAL STREET, ALLEY, SEWER & LIGHTING General Fund 0 Assessments 150,000 |



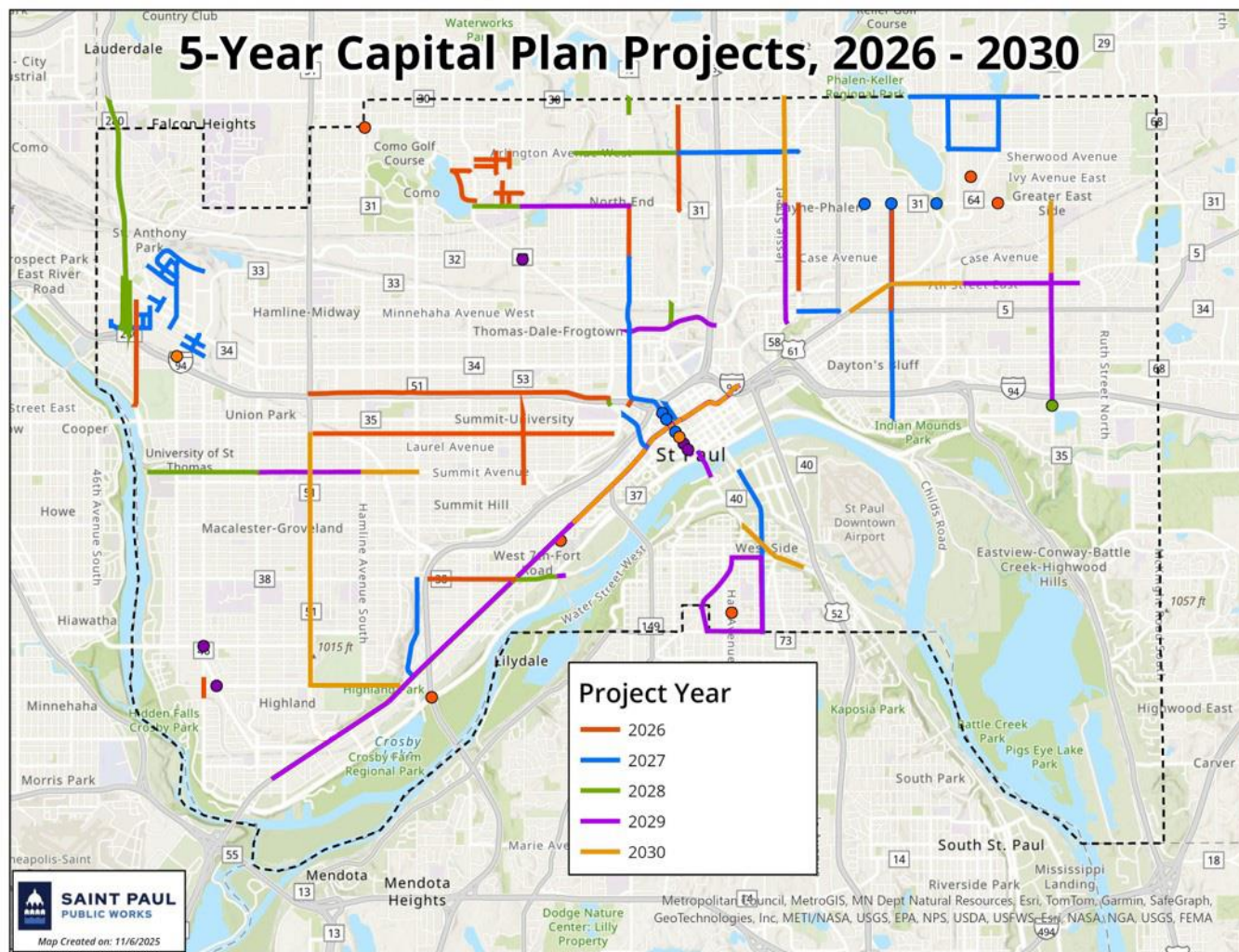
2026 FIVE YEAR CAPITAL PLAN

Draft 10/28/25

This document shows projects approved for 2026 and planned for 2027 to 2030. The 5-year Plan is proposed by the Department of Public Works and reviewed and adopted annually by the City Council. All information provided for 2027 to 2030 is preliminary and subject to change.

| 2026 | 2027 | 2028 | 2029 | 2030 |
|---|---|---|---|---|
| CAPITAL IMPROVEMENTS BONDS \$600,000 Randolph Bridge 260,000 Programs: 340,000 Ped & Traffic Safety Improvements 225,000 RR Crossing Safety Improvements 0 Signalized Intersection Safety Improvements 115,000 Stairway Repair & Replacement Program 0 Bicycle Facility Improvements (Gen Fund) 172,599 | CAPITAL IMPROVEMENTS BONDS \$3,115,000 Randolph Bridge 2,740,000 Programs: 375,000 Ped & Traffic Safety Improvements 250,000 RR Crossing Safety Improvements 0 Signalized Intersection Safety Improvements 125,000 Stairway Repair & Replacement Program 0 Bicycle Facility Improvements (Gen Fund) 172,599 | CAPITAL IMPROVEMENTS BONDS \$2,855,000 Gold Line Pedestrian Improvements 1,500,000 Sidewalk Grinding Project 200,000 Programs: 1,155,000 Ped & Traffic Safety Improvements 250,000 RR Crossing Safety Improvements 30,000 Signalized Intersection Safety Improvements 125,000 Stairway Repair & Replacement Program 750,000 Bicycle Facility Improvements (Gen Fund) 172,599 | CAPITAL IMPROVEMENTS BONDS \$835,000 Sidewalk Grinding Project 200,000 Programs: 635,000 Ped & Traffic Safety Improvements 250,000 RR Crossing Safety Improvements 10,000 Signalized Intersection Safety Improvements 125,000 Stairway Repair & Replacement Program 250,000 Bicycle Facility Improvements (Gen Fund) 172,599 | CAPITAL IMPROVEMENTS BONDS \$835,000 Sidewalk Grinding Project 200,000 Programs: 635,000 Ped & Traffic Safety Improvements 250,000 RR Crossing Safety Improvements 10,000 Signalized Intersection Safety Improvements 125,000 Stairway Repair & Replacement Program 250,000 Bicycle Facility Improvements (Gen Fund) 172,599 |
| COUNTY FUNDING \$1,000,000 Ramsey Co Traffic Signals Annual Program 500,000 Randolph & Lexington Sidewalks 500,000 | COUNTY FUNDING \$1,000,000 Ramsey Co Traffic Signals Annual Program 500,000 Randolph & Lexington Sidewalks 500,000 | COUNTY FUNDING \$500,000 Ramsey Co Traffic Signals Annual Program 500,000 | COUNTY FUNDING \$500,000 Ramsey Co Traffic Signals Annual Program 500,000 | COUNTY FUNDING \$500,000 Ramsey Co Traffic Signals Annual Program 500,000 |
| COUNTY PROJECTS (with City cost share) Dale - Grand to Iglehart Jackson - Arlington to Wheelock Ped Imps Jackson - Rose to Arlington | COUNTY PROJECTS (with City cost share) Larpenteur - E Shore Drive to Flandrau Rice Street - John Ireland to Pennsylvania | COUNTY PROJECTS (with City cost share) Jackson St - Pennsylvania to Ackerman Randolph - W7th to Shepard | COUNTY PROJECTS (with City cost share) Dale at Front & Como Edgerton - Payne to Maryland Maryland - Dale to Rice Pennsylvania - Rice to Mississippi White Bear - Suburban to Stillwater | COUNTY PROJECTS (with City cost share) Edgerton - Maryland to Co Rd B White Bear - Stillwater to Maryland |
| MnDOT FUNDING (on City Projects) \$662,000 Focus Beyond SRTS (SRTS Grant) 122,000 Focus Beyond SRTS (TAA) 40,000 West Side SRTS (TAA) 500,000 | MnDOT FUNDING (on City Projects) \$406,000 Rice St - John Ireland to Pennsylvania (TAA) 100,000 Traffic Calming Improvements 306,000 | MnDOT FUNDING (on City Projects) | MnDOT FUNDING (on City Projects) | MnDOT FUNDING (on City Projects) |
| MnDOT PROJECTS (with City cost share) 135 E Bridge over Shepard Signals John Ireland Bridge over 94 | MnDOT PROJECTS (with City cost share) Robert - Fillmore to Annapolis | MnDOT PROJECTS (with City cost share) Eustis/Cromwell - Territorial to Wabasha TH 280 | MnDOT PROJECTS (with City cost share) TH 51/W7th - Munster to St. Clair | MnDOT PROJECTS (with City cost share) TH 51/Shellington - Dayton to TH5/W7th TH 5/W7th - St. Clair to Olke M&O |
| FEDERAL FUNDING \$2,977,400 Chelsea Heights SRTS 1,000,000 Payne Pedestrian Improvements 1,200,000 West Side SRTS (Active Transportation Funds) 777,400 | FEDERAL FUNDING \$24,804,640 Arlington Pedestrian Facilities (2030) 920,000 CCB Kellogg Ph 3 - W7th to John Ireland 5,500,000 CCB Saint Peter - 10th to Rice 5,500,000 Maryland Ave Traffic Signal Enhancements 2,322,400 Minnehaha - Payne to E7th 5,224,640 Wabasha - 7th to 11th 5,337,600 | FEDERAL FUNDING \$2,000,000 Gold Line Pedestrian Improvements 2,000,000 | FEDERAL FUNDING \$4,132,000 Randolph Bridge 4,132,000 | FEDERAL FUNDING 2030/2031 Regional Solicitation Projects TBD |
| SEWER UTILITY \$15,300,000 Sewer Rehab 500,000 Sewer Repairs (City, County, State, Transit Projects) 3,000,000 Citywide Sewer Repairs 3,000,000 Pump Station Renovations 2,000,000 Sewer Capacity Improvements (PED Projects) 2,700,000 Flood Protection Improvements 1,500,000 Tunnel Rehab 2,500,000 Water Quality Improvements 100,000 | SEWER UTILITY \$15,600,000 Sewer Rehab 1,000,000 Sewer Repairs (City, County, State, Transit Projects) 3,500,000 Citywide Sewer Repairs 3,000,000 Pump Station Renovations 2,000,000 Sewer Capacity Improvements (PED Projects) 1,000,000 Flood Protection Improvements 1,500,000 Tunnel Rehab 3,500,000 Water Quality Improvements 100,000 | SEWER UTILITY \$17,500,000 Sewer Rehab 2,000,000 Sewer Repairs (City, County, State, Transit Projects) 3,500,000 Citywide Sewer Repairs 3,000,000 Pump Station Renovations 2,000,000 Sewer Capacity Improvements (PED Projects) 1,000,000 Flood Protection Improvements 1,500,000 Tunnel Rehab 3,500,000 Water Quality Improvements 1,000,000 | SEWER UTILITY \$17,500,000 Sewer Rehab 2,000,000 Sewer Repairs (City, County, State, Transit Projects) 3,500,000 Citywide Sewer Repairs 3,000,000 Pump Station Renovations 2,000,000 Sewer Capacity Improvements (PED Projects) 1,000,000 Flood Protection Improvements 1,500,000 Tunnel Rehab 3,500,000 Water Quality Improvements 1,000,000 | SEWER UTILITY \$17,500,000 Sewer Rehab 2,000,000 Sewer Repairs (City, County, State, Transit Projects) 3,500,000 Citywide Sewer Repairs 3,000,000 Pump Station Renovations 2,000,000 Sewer Capacity Improvements (PED Projects) 1,000,000 Flood Protection Improvements 1,500,000 Tunnel Rehab 3,500,000 Water Quality Improvements 1,000,000 |

5-Year Capital Plan Projects, 2026 - 2030





Capital Funding Sources

City Sources

- Street Reconstruction Bonds
 - Issued annually for street infrastructure
- Municipal State Aid
 - Largely state gas tax
 - Formula funding based on population and needs
 - For use on MSA routes with MSA standards
- Common Cent
 - Local option sales tax
 - $\frac{3}{4}$ of new 1% sales tax



Capital Funding Sources

City Sources

- General Fund
 - Sidewalks
 - Mill and overlay
 - Alleys
- Capital Improvement Bonds
 - Program funding
- Assessments
 - Reconstruction
 - Mill and overlay



Capital Funding Sources

External Sources

- Ramsey County
 - Competitive solicitations
 - Cooperative cost participation
- MnDOT
 - Competitive solicitations
 - Cooperative cost participation
- Federal funding
 - Competitive solicitations
 - Congressional earmarks for larger projects



Capital Funding Sources

External Sources

- MN Legislative Appropriations
 - Bonds
 - General funds
 - Very specific uses on specific projects
- TAA (Transportation Advancement Account)
 - Metro delivery fee
 - Local cost share and engineering for federal grants



2025 Projects

Street Projects

- Jackson – University to Pennsylvania
- Robert Street – Kellogg to I94
- Kellogg/3rd Street Bridge
- Grand Avenue - Snelling to Fairview
- Pleasant Avenue - Victoria to Saint Clair
- Wheelock/Grotto Phase 1
- West Side Bike Boulevard
- Cleveland RR Crossing Safety Improvements



2025 Projects

Mill and Overlay Projects

- George Street - Cesar Chavez to Smith
- Front – Western to Rice
- Ruth/Algonquin
- Fourth/Howard Residential Phase 2
- Hatch/Park Residential Phase 1 & 2



Jackson Street





Robert Street





Pleasant Street





West Side Bike Boulevard





Cleveland RR Crossing Safety Improvements





2026 Projects

Reconstruction Projects

- University – I35E to Lafayette
- Earl – Maryland to Minnehaha
- Pelham – Franklin to Mississippi River Boulevard
- Wheelock/Grotto Phase 2
- Payne Pedestrian Improvements
- Chelsea Heights Safe Routes To School



2026 Projects

Mill and Overlay Projects

- St. Anthony – Snelling to Marion
- Ivy/Birmingham Residential
- Selby – Snelling to Summit



Common Cent

Public Works is advancing plans for implementing street projects with Common Cent funds.



Reviewed initial
project cost estimates



Forecasted sales tax
revenue



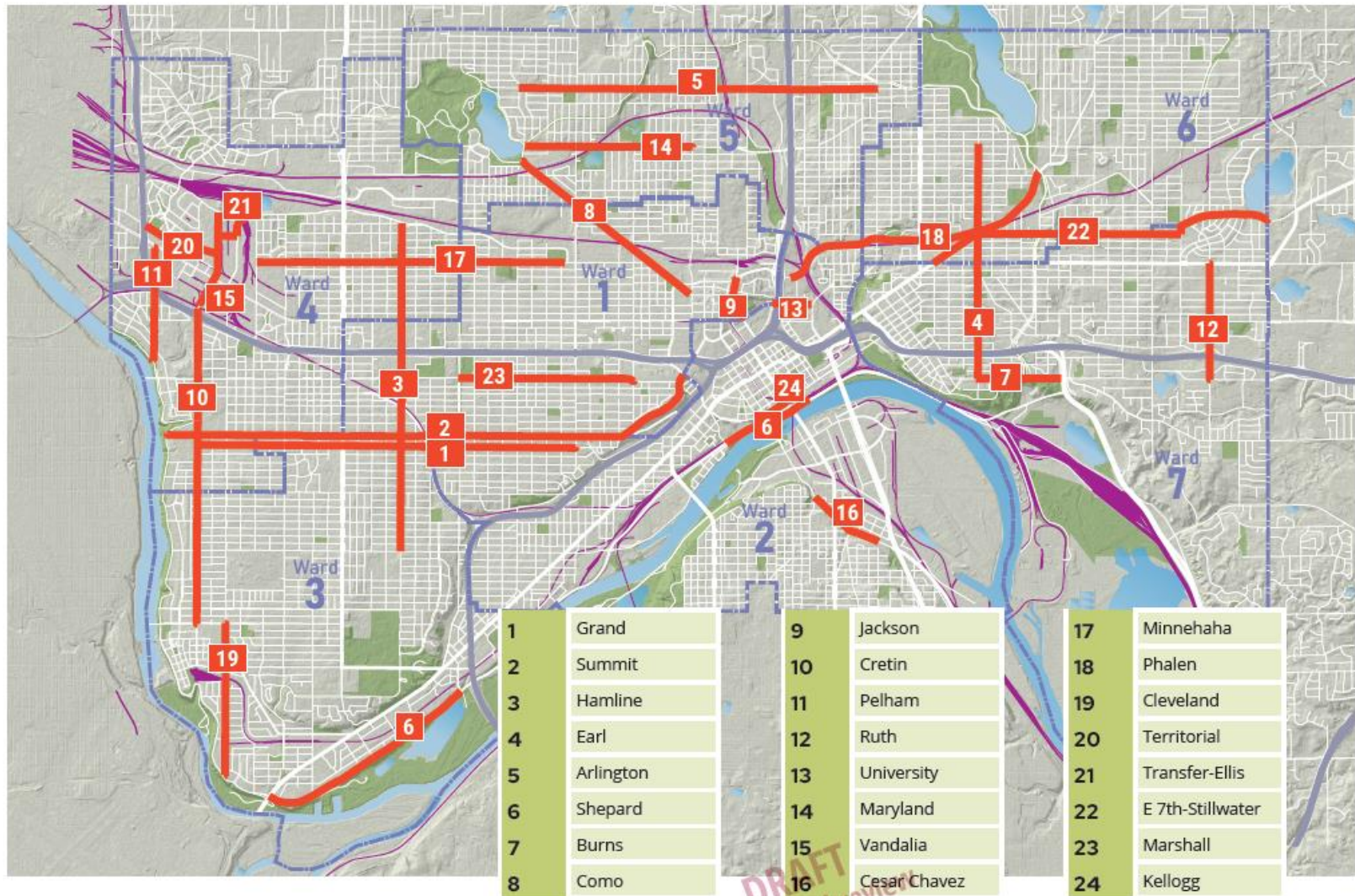
Developed technical
scoring of project
priorities



Programmed projects
into a 20 year timeline



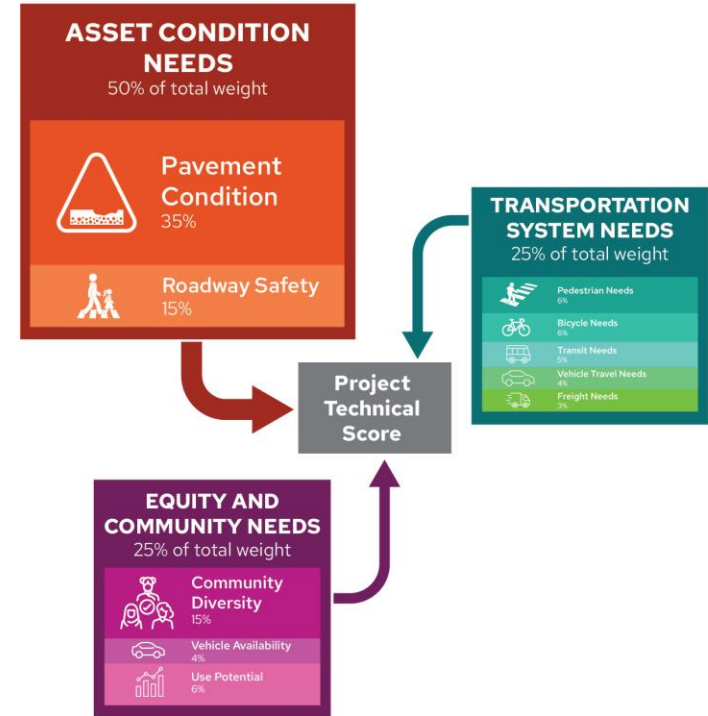
Documentation &
community
engagement -
ongoing





Project Programming

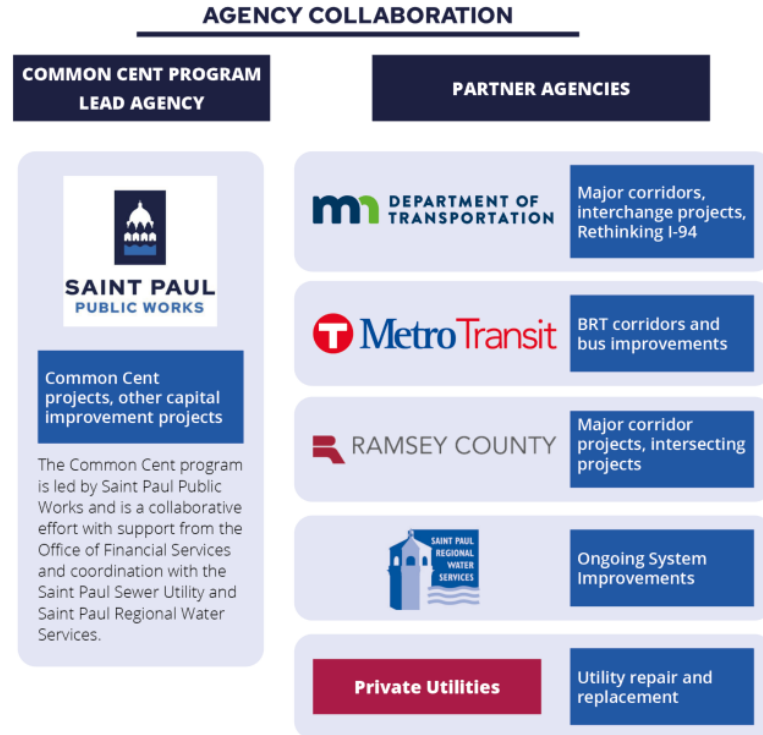
- Technical review & project scoring
 - Factors included asset condition needs, transportation system needs and equity and community needs





Project Programming

- Agency coordination & geographic considerations
 - Partner agency project plans can influence timing of Common Cent projects
 - Geographic constraints of delivering projects too close to one another

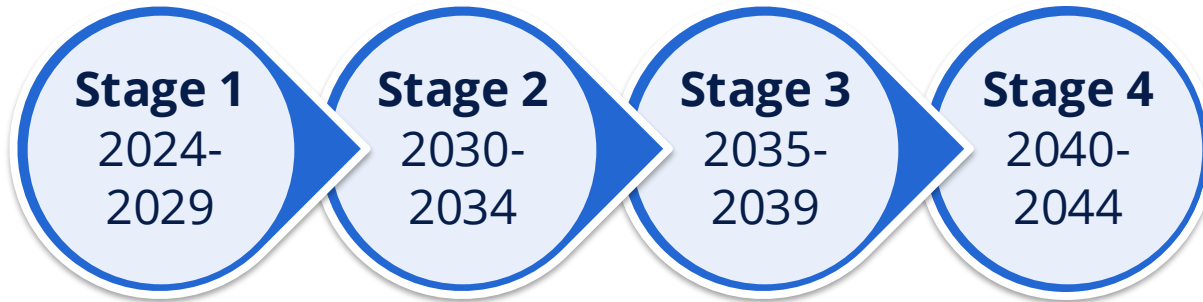




Common Cent

Each Stage of Common Cent is Five Years

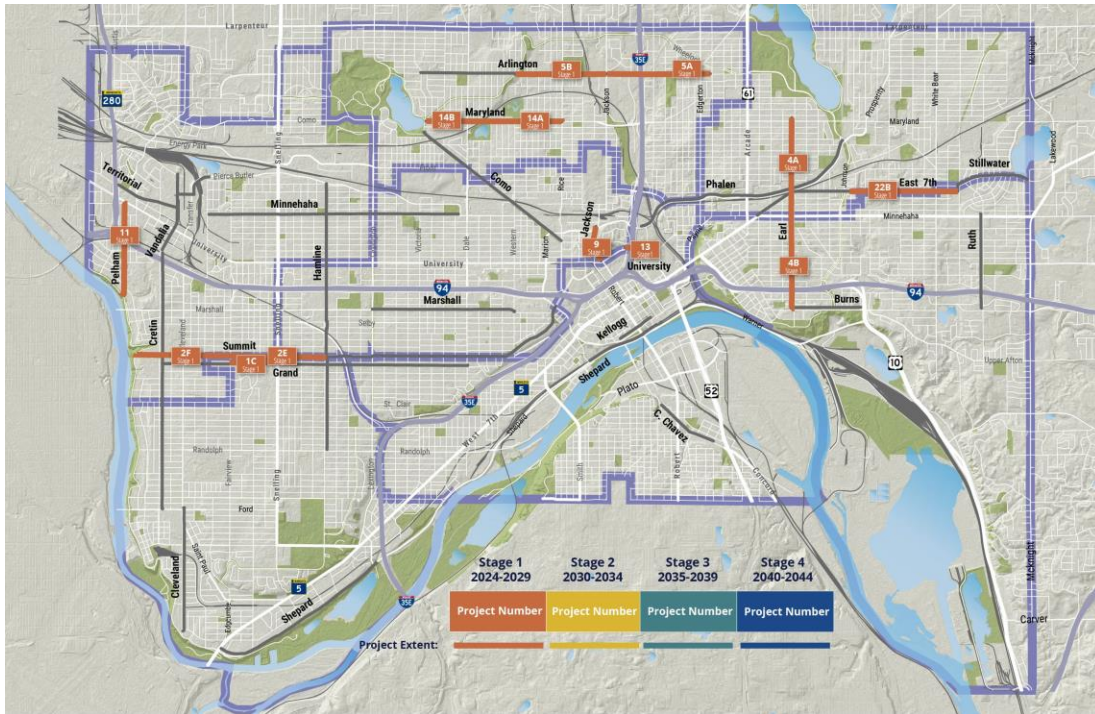
- The program is divided into four stages of five years in length
- Each a project will be placed in a year for construction within the CIP process





Stage 1

Map outlines all projects in 2024-2029 (current CIP)

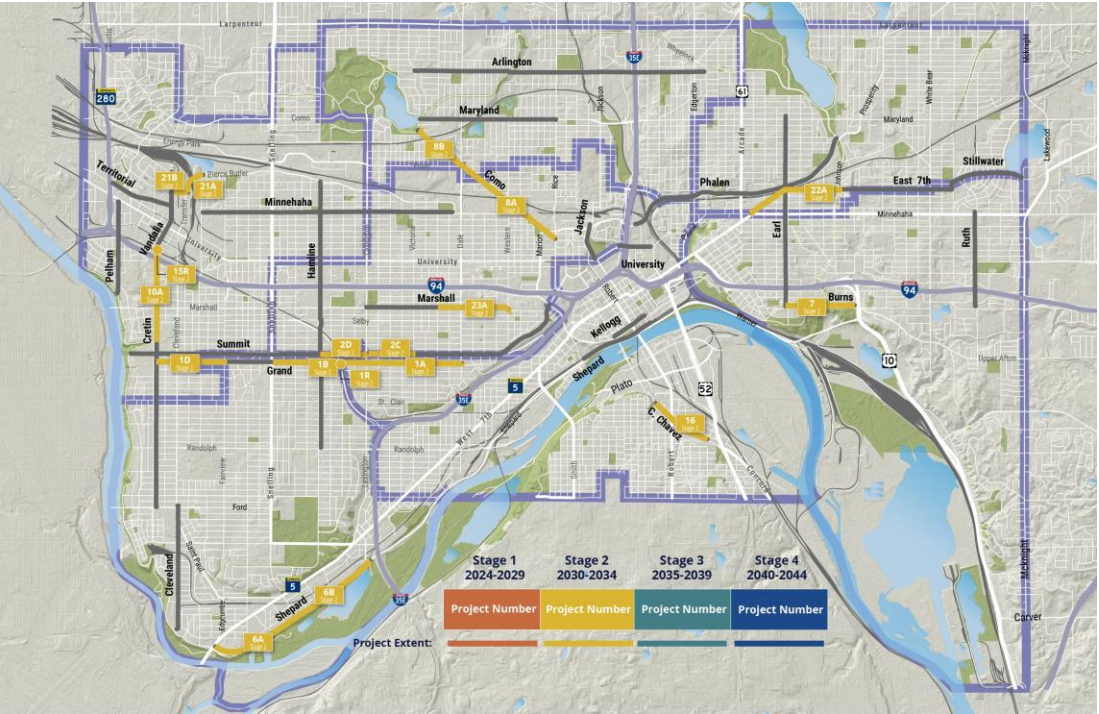


| Project Num. | Corridor Name | Extents |
|--------------|-------------------|----------------------------|
| 1c | Grand Avenue | Fairview to Snelling |
| 9 | Jackson Street | University to Pennsylvania |
| 13 | University Avenue | I35E to Lafayette |
| 4a | Earl Street | Maryland to Minnehaha |
| 11 | Pelham Boulevard | Franklin to MRB |
| 4b | Earl Street | Minnehaha to Burns |
| 5a | Arlington Avenue | Jackson to Payne |
| 2f | Summit Avenue | MRB to Fairview |
| 5b | Arlington Avenue | Wheelock to Jackson |
| 14b | Maryland Avenue | Como Blvd to Dale |
| 2e | Summit Avenue | Fairview to Hamline |
| 14a | Maryland Avenue | Dale to Rice (County) |
| 22b | E. 7th Street | Clarence to Hazel |



Stage 2

Projects in 2030-2034

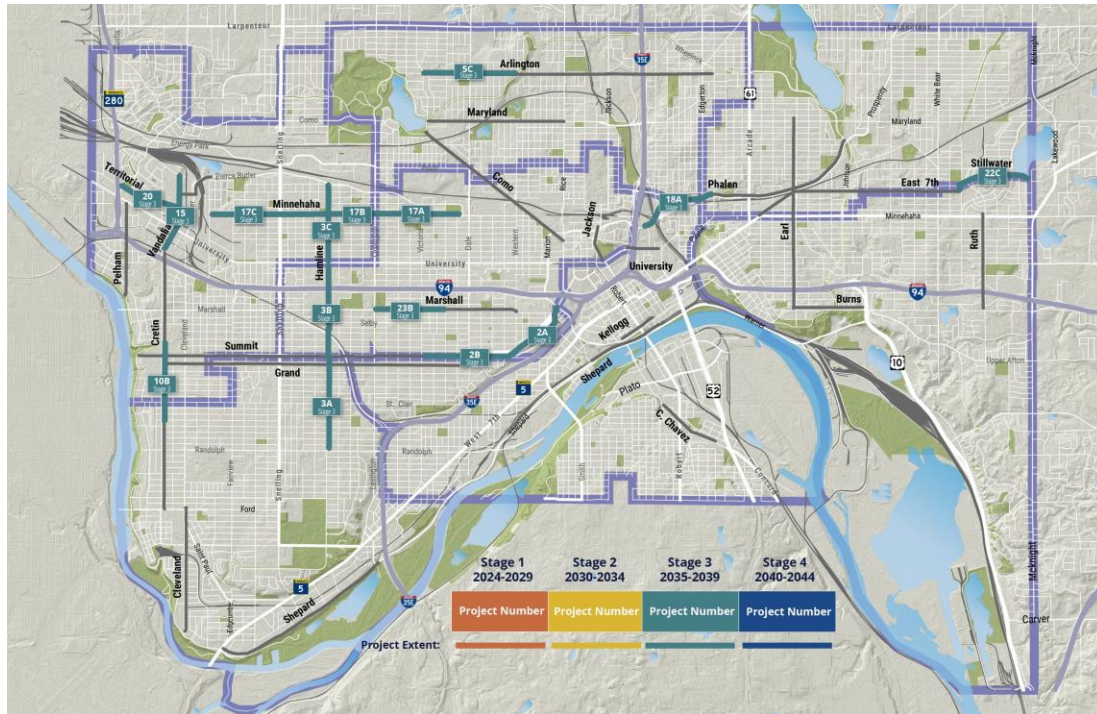


| Project Num. | Corridor Name | Extents |
|--------------|---------------------|---------------------------|
| 2d | Summit Avenue | Hamline to Lexington |
| 16 | Cesar Chavez Street | Wabasha to Bancroft |
| 22a | E. 7th Street | Minnehaha to Clarence |
| 15R | Vandalia Street | Bridge |
| 1d | Grand Avenue | Cretin to Fairview |
| 6b | Shepard Road | Madison to Elway |
| 23a | Marshall Avenue | Grotto to Western |
| 1R | Grand Avenue | Bridge |
| 1b | Grand Avenue | Snelling to Lexington |
| 6a | Shepard Road | TH 5 to Madison |
| 8a | Como Avenue | Dale to Rice (County) |
| 1a | Grand Avenue | Lexington to Dale |
| 8b | Como Avenue | Maryland to Dale |
| 10a | Cretin Avenue | I94 to MRB |
| 2c | Summit Avenue | Lexington to Victoria |
| 7 | Burns Avenue | Earl to TH 61 |
| 21a | Transfer Road | Ellis to Prior |
| 21b | Ellis Avenue | Vandalia to Transfer Road |



Stage 3

Projects in 2035-2039

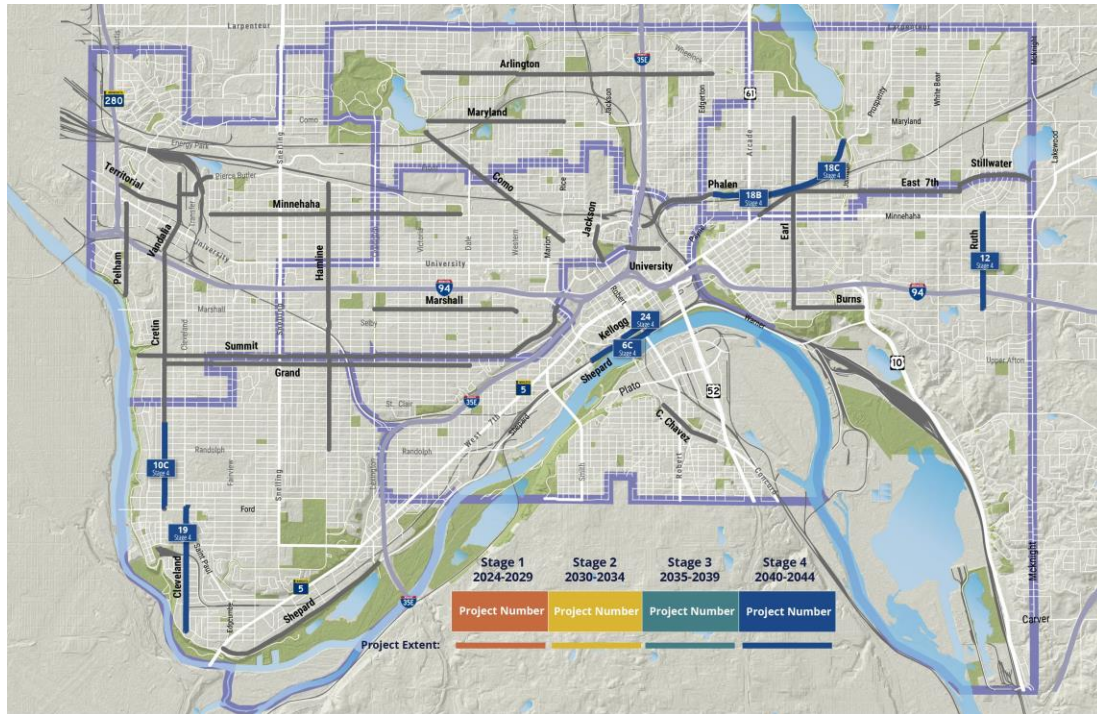


| Project Num. | Corridor Name | Extents |
|--------------|-------------------|-----------------------------|
| 2b | Summit Avenue | Victoria to Western |
| 3b | Hamline Avenue | University to Summit |
| 17a | Minnehaha Avenue | Lexington to Pierce Butler |
| 2a | Summit Avenue | Western to Kellogg |
| 17b | Minnehaha Avenue | Simpson to Lexington |
| 23b | Marshall Avenue | Lexington to Grotto |
| 3c | Hamline Avenue | Pierce Butler to University |
| 15 | Vandalia Street | Capp Rd to I94 |
| 17c | Minnehaha Avenue | Prior to Simpson |
| 3a | Hamline Avenue | Summit to Randolph |
| 5c | Arlington Avenue | Victoria to Wheelock |
| 20 | Territorial Road | Cromwell to Vandalia |
| 10b | Cretin Avenue | MRB to Jefferson |
| 18a | Phalen Boulevard | Mississippi to Payne |
| 22c | Stillwater Avenue | Hazel to McKnight |



Stage 4

Projects in 2040-2044

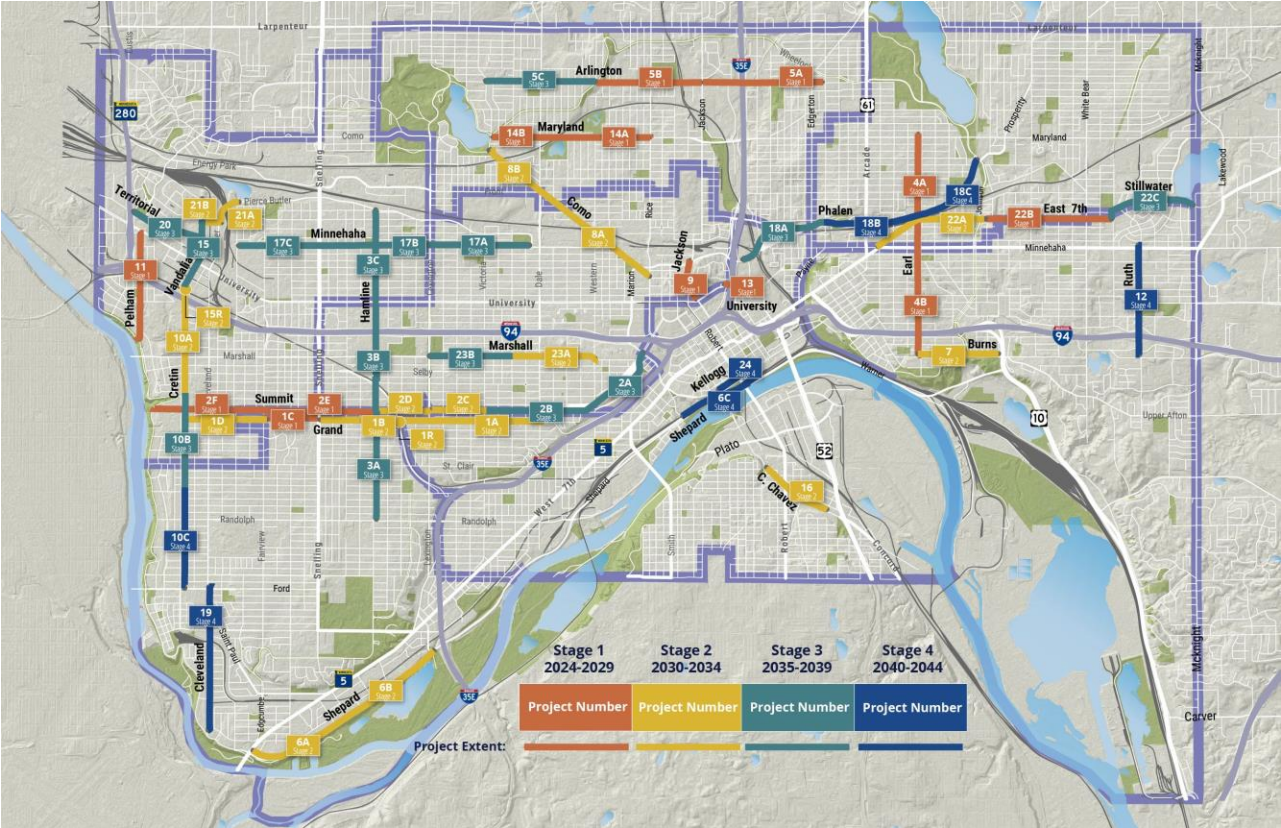


| Project Num. | Corridor Name | Extents |
|--------------|------------------|---------------------------|
| 10c | Cretin Avenue | Jefferson to Ford Parkway |
| 18b | Phalen Boulevard | Payne to Earl |
| 24 | Kellogg Blvd | Wabasha to Sibley |
| 6c | Shepard Road | Eagle Pkwy to Sibley |
| 18c | Phalen Boulevard | Earl to Johnson Parkway |
| 12 | Ruth Street | Minnehaha to Burns |
| 19 | Cleveland Avenue | Ford Parkway to MRB |



Full Program Map

Map outlines all
four stages of
Common Cent
implementation





Common Cent

Common Cent Street Improvement Programming Plan in development.

- Additional coordination with other City of Saint Paul divisions ongoing
- Public engagement coming winter 2025/2026
- Anticipate finalizing the plan in 2026





Questions?