

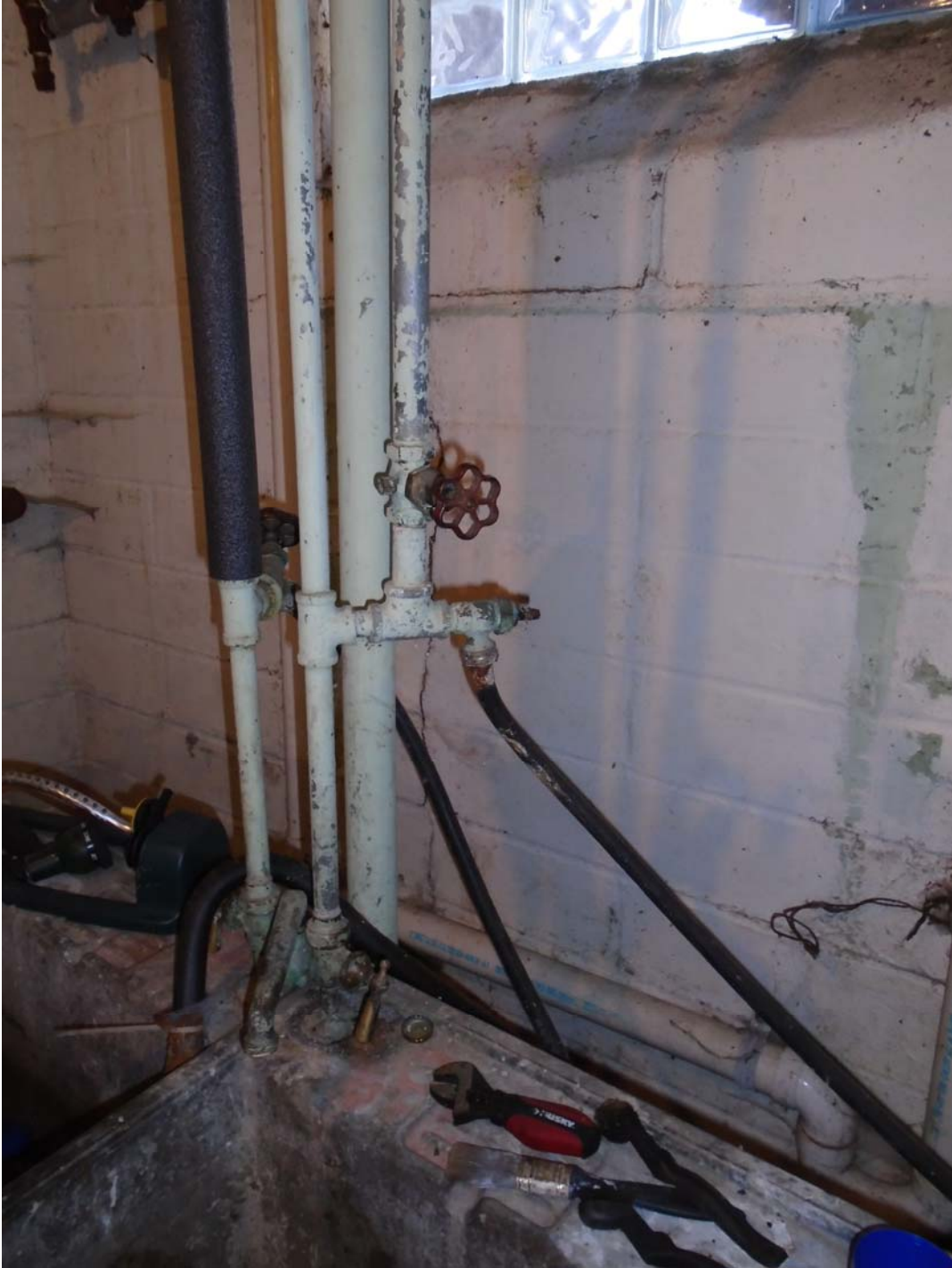
Date: May 19, 2015
File #: 13 - 191634
Folder Name: 2115 4TH ST E
PIN: 352922130017



Date: May 19, 2015
File #: 13 - 191634
Folder Name: 2115 4TH ST E
PIN: 352922130017



Date: May 19, 2015
File #: 13 - 191634
Folder Name: 2115 4TH ST E
PIN: 352922130017



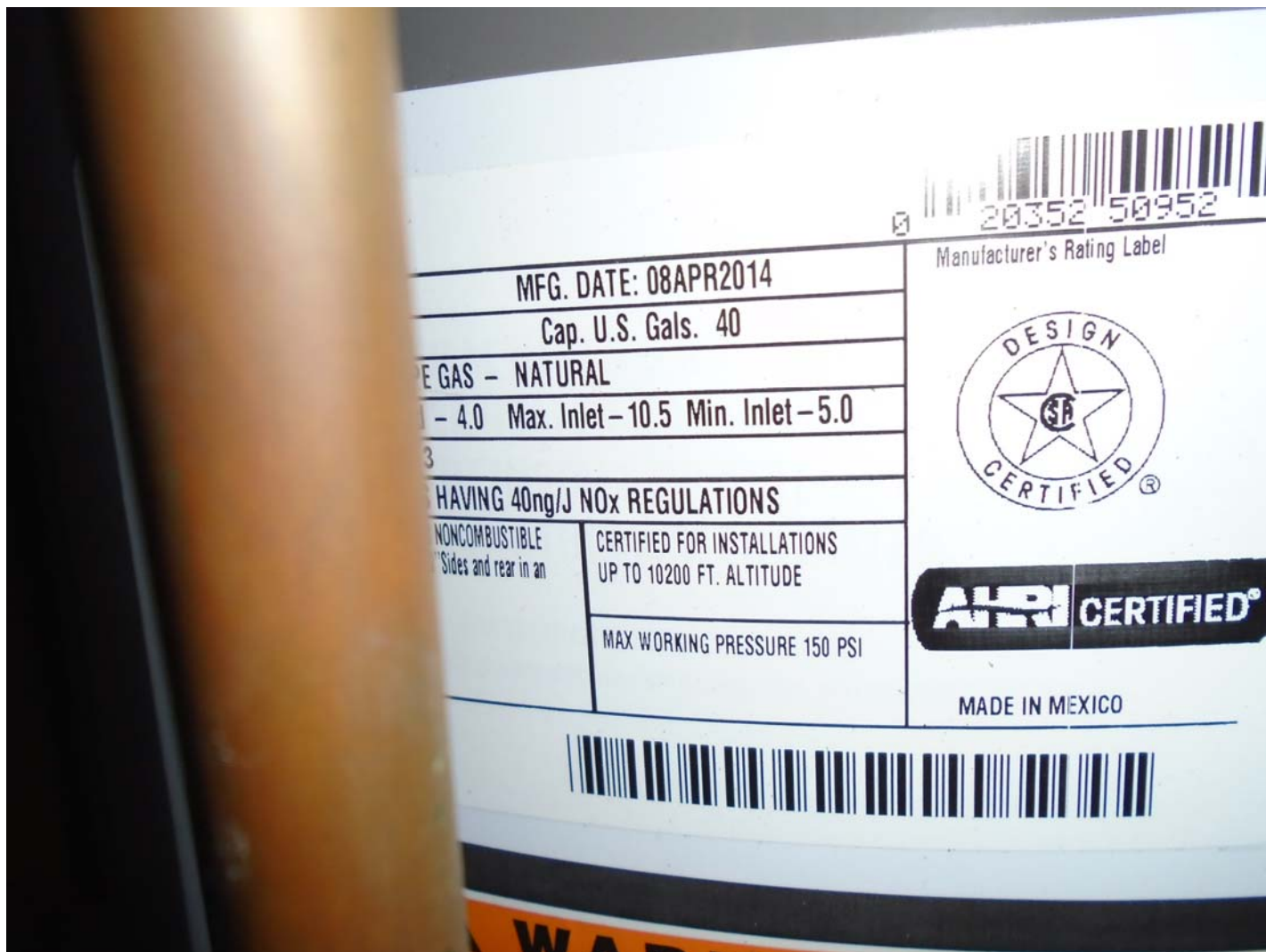
Date: May 19, 2015
File #: 13 - 191634
Folder Name: 2115 4TH ST E
PIN: 352922130017



Date: May 19, 2015
File #: 13 - 191634
Folder Name: 2115 4TH ST E
PIN: 352922130017



Date: May 19, 2015
File #: 13 - 191634
Folder Name: 2115 4TH ST E
PIN: 352922130017



20352 50952

Manufacturer's Rating Label

MFG. DATE: 08APR2014

Cap. U.S. Gals. 40

GAS - NATURAL

- 4.0 Max. Inlet - 10.5 Min. Inlet - 5.0

HAVING 40ng/J NOx REGULATIONS

NONCOMBUSTIBLE
Sides and rear in an

CERTIFIED FOR INSTALLATIONS
UP TO 10200 FT. ALTITUDE

MAX WORKING PRESSURE 150 PSI



MADE IN MEXICO



WARNING