

**Date:** July 13, 2018  
**File #:** 15 - 143009  
**Folder Name:** 935 FOREST ST AKA 935 SIMS  
**PIN:** 282922320030



**Date:** July 13, 2018  
**File #:** 15 - 143009  
**Folder Name:** 935 FOREST ST AKA 935 SIMS  
**PIN:** 282922320030





Date: July 13, 2018  
File #: 15 - 143009  
Folder Name: 935 FOREST ST AKA 935 SIMS  
PIN: 282922320030



**Date:** July 13, 2018  
**File #:** 15 - 143009  
**Folder Name:** 935 FOREST ST AKA 935 SIMS  
**PIN:** 282922320030





**Date:** July 13, 2018  
**File #:** 15 - 143009  
**Folder Name:** 935 FOREST ST AKA 935 SIMS  
**PIN:** 282922320030



**Date:** July 13, 2018  
**File #:** 15 - 143009  
**Folder Name:** 935 FOREST ST AKA 935 SIMS  
**PIN:** 282922320030





**Date:** July 13, 2018  
**File #:** 15 - 143009  
**Folder Name:** 935 FOREST ST AKA 935 SIMS  
**PIN:** 282922320030



**Date:** July 13, 2018  
**File #:** 15 - 143009  
**Folder Name:** 935 FOREST ST AKA 935 SIMS  
**PIN:** 282922320030





**Date:** July 13, 2018  
**File #:** 15 - 143009  
**Folder Name:** 935 FOREST ST AKA 935 SIMS  
**PIN:** 282922320030



**Date:** July 13, 2018  
**File #:** 15 - 143009  
**Folder Name:** 935 FOREST ST AKA 935 SIMS  
**PIN:** 282922320030





**Date:** July 13, 2018  
**File #:** 15 - 143009  
**Folder Name:** 935 FOREST ST AKA 935 SIMS  
**PIN:** 282922320030





**Date:** July 13, 2018  
**File #:** 15 - 143009  
**Folder Name:** 935 FOREST ST AKA 935 SIMS  
**PIN:** 282922320030





**Date:** July 13, 2018  
**File #:** 15 - 143009  
**Folder Name:** 935 FOREST ST AKA 935 SIMS  
**PIN:** 282922320030



Date: July 13, 2018  
File #: 15 - 143009  
Folder Name: 935 FOREST ST AKA 935 SIMS  
PIN: 282922320030

PROVIDED WITH

20752 64185

SERIAL NO. Q221843855	MFG. DATE: 30MAY2018
MODEL NO. XG40106EC36U1	Cap. U.S. Gals. 40
Input BTUH 36 000	TYPE GAS - NATURAL
Gas PRESS IN W.C. - Manifold - 4.0	Max. Inlet - 10.5 Min. Inlet - 5.5
ANSI Z21.10.1 • CSA 4.1-2014 CATEGORY I NATURAL DRAFT	

MINIMUM CLEARANCES FROM COMBUSTIBLE OR NONCOMBUSTIBLE CONSTRUCTION: 1" Sides and 0" rear in a closet - 0" Sides and rear in an alcove 3" front of control to closet door 12" from top pan to ceiling  
May be installed in an alcove or closet and on combustible flooring.

CERTIFIED FOR INSTALLATIONS UP TO 8400 FT. ALTITUDE  
MAX WORKING PRESSURE 150 PSI

DESIGN CERTIFIED

ALDI CERTIFIED

ASSEMBLED IN MEXICO

Abcom Sales Company, Inc.  
Water Heating Division  
Montgomery, Alabama 36117 USA

**A WARNING**

**FOR YOUR SAFETY**

For Safe Flood and Instructions, contact the...  
This appliance with local codes, the National Z223.1/NFPA 54 or and Propane install Installation in Manual Home.  
**Water Leakage - Risk** from which a water leak will at some time leak, the action of water. This water located in an area where no such area cannot be avoided, it drained, be installed under the See Use and Care Manual.  
**CABUTION - Hot water** scald injury. Refer to Scald injury in the instructions before changing the...  
**WARNING - Any thermostat** 125°F may cause severe burns and energy unnecessarily.



Date: July 13, 2018  
File #: 15 - 143009  
Folder Name: 935 FOREST ST AKA 935 SIMS  
PIN: 282922320030



Date: July 13, 2018  
File #: 15 - 143009  
Folder Name: 935 FOREST ST AKA 935 SIMS  
PIN: 282922320030

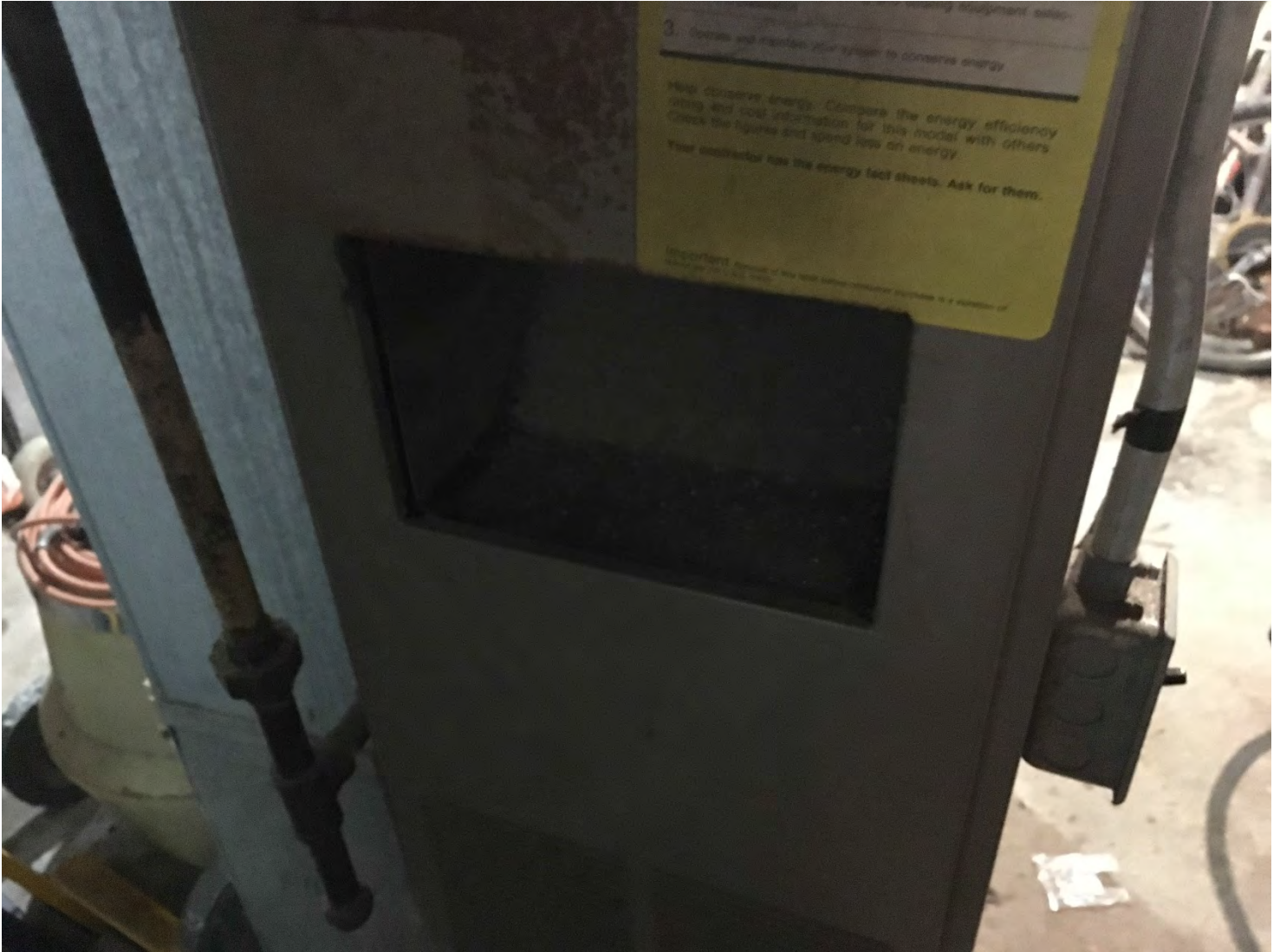




Date: July 13, 2018  
File #: 15 - 143009  
Folder Name: 935 FOREST ST AKA 935 SIMS  
PIN: 282922320030



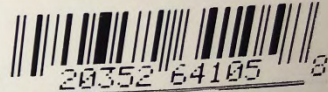
**Date:** July 13, 2018  
**File #:** 15 - 143009  
**Folder Name:** 935 FOREST ST AKA 935 SIMS  
**PIN:** 282922320030





Date: July 13, 2018  
File #: 15 - 143009  
Folder Name: 935 FOREST ST AKA 935 SIMS  
PIN: 282922320030

SERIAL NO. Q161840340 MFG DATE: 18APR2018  
MODEL NO. XG40T06EC36U1 Cap. U.S. Gals. 40  
Input BTUH 36,000 TYPE GAS - NATURAL  
Gas PRESS. IN. W.C. - Manifold - 4.0 Max. Inlet - 10.5 Min. Inlet - 5.5  
ANSI Z21.10.1 • CSA 4.1-2014 CATEGORY I NATURAL DRAFT



Manufacturer's Rating Label



MINIMUM CLEARANCES FROM COMBUSTIBLE OR NONCOMBUSTIBLE CONSTRUCTION. 1" Sides and 0" rear in a closet - 0" Sides and rear in an alcove. 3" front of control to closet door  
12" from top pan to ceiling  
May be installed in an alcove or closet and on combustible flooring.

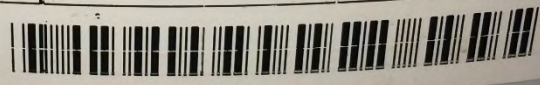
CERTIFIED FOR INSTALLATIONS UP TO 8400 FT. ALTITUDE

MAX WORKING PRESSURE 150 PSI



ASSEMBLED IN MEXICO

Rheem Sales Company, Inc.  
Water Heating Division  
Montgomery, Alabama 36117 USA



CAUTION - No scald injury. Do not touch water in hot water tank. See Use and Care Manual for instructions on hot water tank setting.