

# HIGHLAND BRIDGE ROWHOMES THIRD ADDITION

## LOT AREAS

Area: Subject property contains: 131,757 sf or 3.02% acres

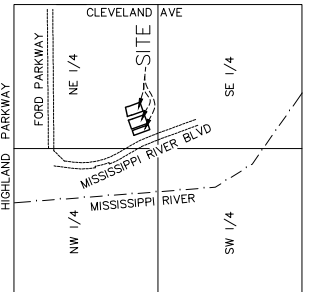
Block	Lot	Area (sf)	Area (ac)
1	1	2,414	0.06±
	2	1,560	0.04±
	3	1,560	0.04±
	4	1,560	0.04±
	5	1,560	0.04±
	6	1,560	0.04±
	7	1,560	0.04±
	8	1,560	0.04±
	9	1,560	0.04±
	10	1,560	0.04±
	11	1,961	0.05±
2	1	2,180	0.05±
	2	1,300	0.03±
	3	1,300	0.03±
	4	1,300	0.03±
	5	1,300	0.03±
	6	1,300	0.03±
	7	1,300	0.03±
	8	1,300	0.03±
	9	1,300	0.03±
	10	1,560	0.04±
	11	1,560	0.04±
	12	1,560	0.04±
	13	2,210	0.05±
3	1	1,528	0.04±
	2	1,300	0.03±
	3	1,300	0.03±
	4	1,300	0.03±
	5	1,300	0.03±
	6	1,560	0.04±
	7	1,560	0.04±
	8	1,560	0.04±
	9	2,048	0.05±
4	1	1,528	0.04±
	2	1,300	0.03±
	3	1,300	0.03±
	4	1,300	0.03±
	5	1,300	0.03±
	6	1,560	0.04±
	7	1,560	0.04±
	8	1,560	0.04±
	9	2,048	0.05±
5	1	2,341	0.05±
	2	1,512	0.03±
	3	1,512	0.03±
	4	1,512	0.03±
	5	1,512	0.03±
	6	2,385	0.05±
6	1	2,015	0.05±
	2	1,300	0.03±
	3	1,300	0.03±
	4	1,300	0.03±
	5	1,300	0.03±
	6	1,300	0.03±
	7	1,560	0.04±
	8	1,560	0.04±
	9	1,300	0.03±
	10	1,300	0.03±
	11	1,300	0.03±
	12	1,300	0.03±
	13	1,300	0.03±
	14	2,015	0.05±
OUTLOT A		11,657	0.27±
OUTLOT B		15,081	0.35±
OUTLOT C		9,300	0.21±

## LEGAL DESCRIPTION

Lots 2, Block 19; Lots 1, Block 20; and Lot 1, Block 21; FORD, Ramsey County, Minnesota

## VICINITY MAP

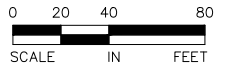
SECTION 17, T.28, R.23



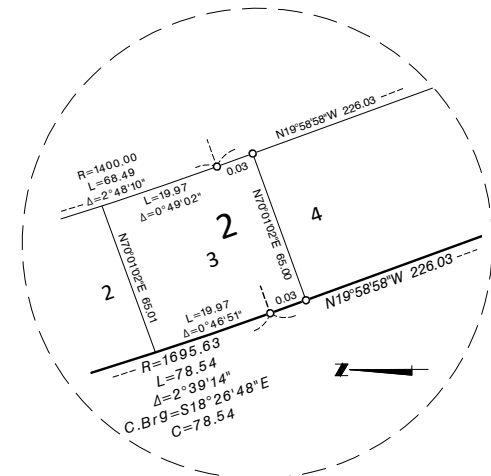
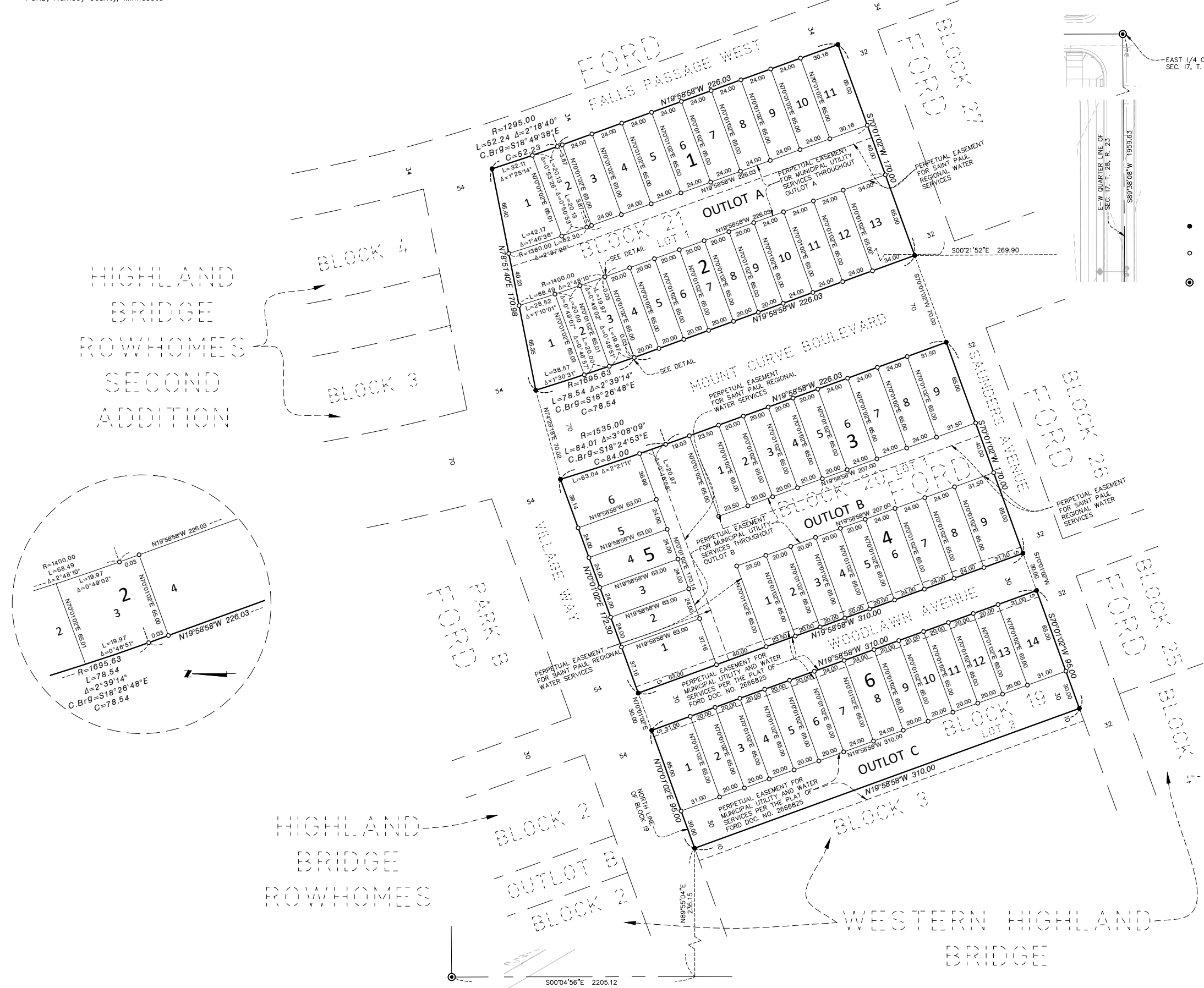
NOT TO SCALE

THE NORTH LINE OF BLOCK 19, FORD, IS ASSUMED TO HAVE A BEARING OF N70°01'02"E.

- Denotes 1/2 inch x 14 inch rebar found marked by license no. 45873, unless otherwise noted
- Denotes 1/2 inch x 18 inch iron pipe set marked by license no. 44110
- ⊙ Denotes found Cast Iron Monument

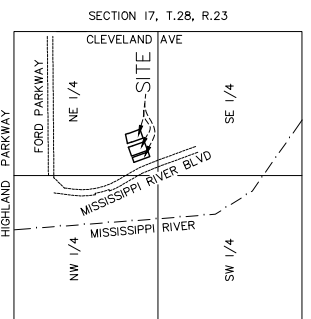


SCALE: ONE INCH EQUALS FORTY FEET



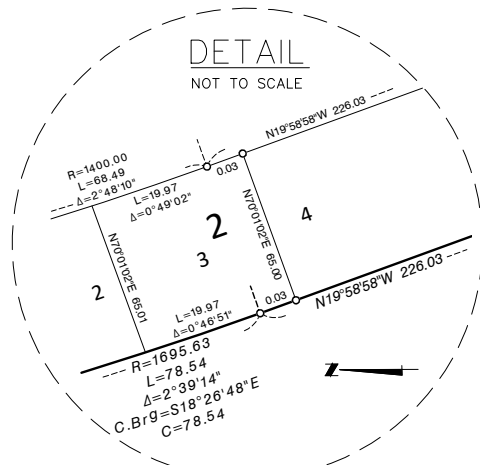
# HIGHLAND BRIDGE ROWHOMES THIRD ADDITION

VICINITY MAP



NOT TO SCALE

HIGHLAND  
BRIDGE  
ROWHOMES  
SECOND  
ADDITION



DETAIL  
NOT TO SCALE

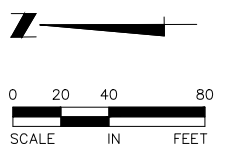
HIGHLAND  
BRIDGE  
ROWHOMES

NORTH 1/4 CORNER OF  
SEC. 17, T. 28, R. 23

500°04'56"E 2205.12

THE NORTH LINE OF BLOCK 19, FORD, IS ASSUMED TO HAVE A BEARING OF N70°01'02"E.

- Denotes 1/2 inch x 14 inch rebar found marked by license no. 45873, unless otherwise noted
- Denotes 1/2 inch x 18 inch iron pipe set marked by license no. 44110
- ⊙ Denotes found Cast Iron Monument



SCALE: ONE INCH EQUALS FORTY FEET

