

# Saint Paul River Balcony



**Community Meeting**

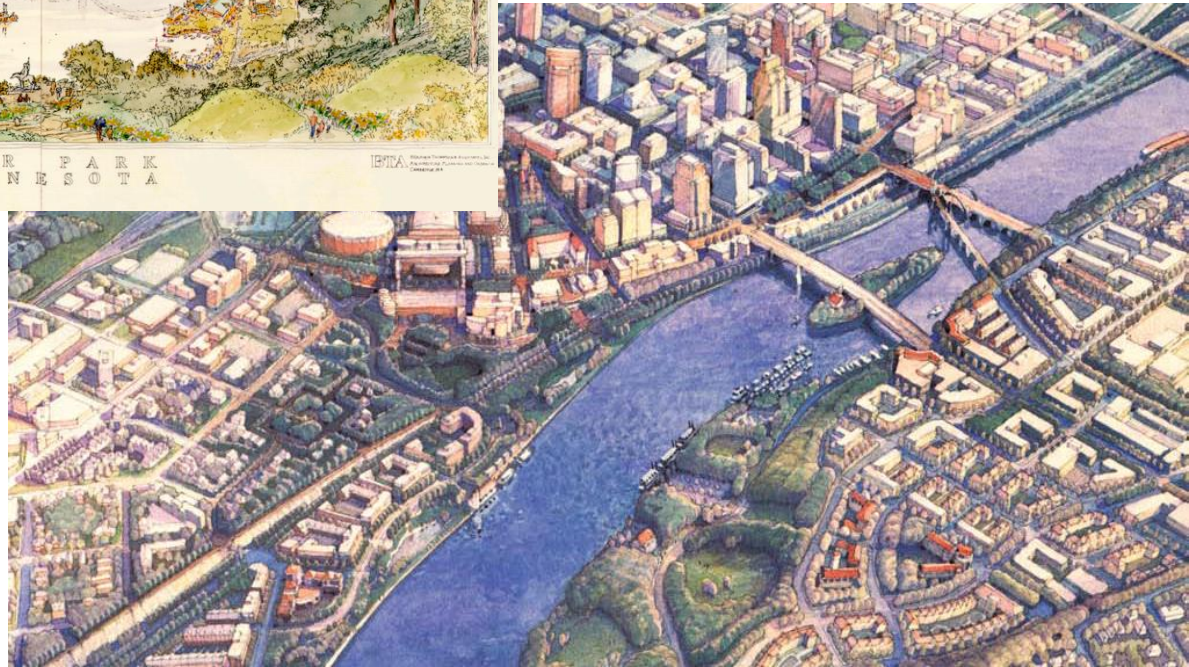
April 28, 2016

**Saint Paul River Balcony Master Plan**

# Vision : Saint Paul on the Mississippi Development Framework



- River as an amenity, central gathering space
- Connect to the Mississippi River
- New development within a “Great River Park”



# Vision : Great River Passage Master Plan

## GREAT RIVER PASSAGE

more natural . more urban . more connected  
A Master Plan for Saint Paul's 17 Miles of  
Mississippi River Parklands

The Saint Paul River Balcony . . . “will contribute to the economic vitality of Downtown and extend community life to the edge of the river. It will be comprised of a series of parks, linked by continuous broad pedestrian walkways that bring the City to the top of the bluff and the edge of the river.”



# Saint Paul River Balcony : Master Plan Process

## **Project Review Team**

The Project Review Team included representatives from:

- + City of Saint Paul Staff (PED, Parks, Public Works, HPC)
- + Ramsey County Staff (RCRRA, Property Management)
- + Saint Paul Design Center
- + CapitolRiver Council
- + Science Museum of Minnesota
- + Public Art Saint Paul
- + Exeter Group
- + District Energy

## **Meetings**

Project Review Team Meetings

Design Team Workshops

Focus Topic Roundtables, and . . .

a well-attended Public Open House held at Saint Paul  
Union Depot - September 2015

- \* **Downtown river bluff rises app. 100' above river at Wabasha**
- \* **Bluff face exposed between Wabasha and Robert; otherwise obscured by buildings and infrastructure**
- \* **5 sub-contexts or themes**
  1. **The River Gateway to Saint Paul: Geology, Prehistory and the Landscape Architect and Artist**
  2. **The Bluff and Saint Paul's Pioneer Period: 1837-1862**
  3. **The Railroad Hub: 1862-1972**
  4. **Third Street Becomes Kellogg Boulevard: 1900-1940**
  5. **Tearing Down Downtown: Urban Renewal: 1955-1978**
- \* **Guidelines:**
  1. **Interpret bluff geology and history in future programming, public art .**
  2. **Avoid blocking views of exposed bluff; conserve existing sections**
  3. **Separate Balcony from historic buildings.**

# Precedent Research : Access + Connections

OLYMPIC PARK  
SEATTLE, WA  
Designer: Weiss/Manfredi

The park consists of a 9-acre outdoor sculpture museum and beach. Envisioned as a new urban model for sculpture parks, this project is located on Seattle's last undeveloped waterfront property – an industrial brownfield site sliced by train tracks and an arterial road. The design connects three separate sites with an uninterrupted Z-shaped "green" platform, descending forty feet from the city to the water, capitalizing on

views of the skyline and Elliott Bay, and rising over existing infrastructure to reconnect the urban core to the revitalized waterfront.

- 1 Moseley Path Entrance
- 2 The Valley
- 3 Gates Amphitheater
- 4 Mimi Gardner Gates Bridge



Budget: \$85 million  
Date: 2007

# Precedent Research : Parks + Trails + Open Space

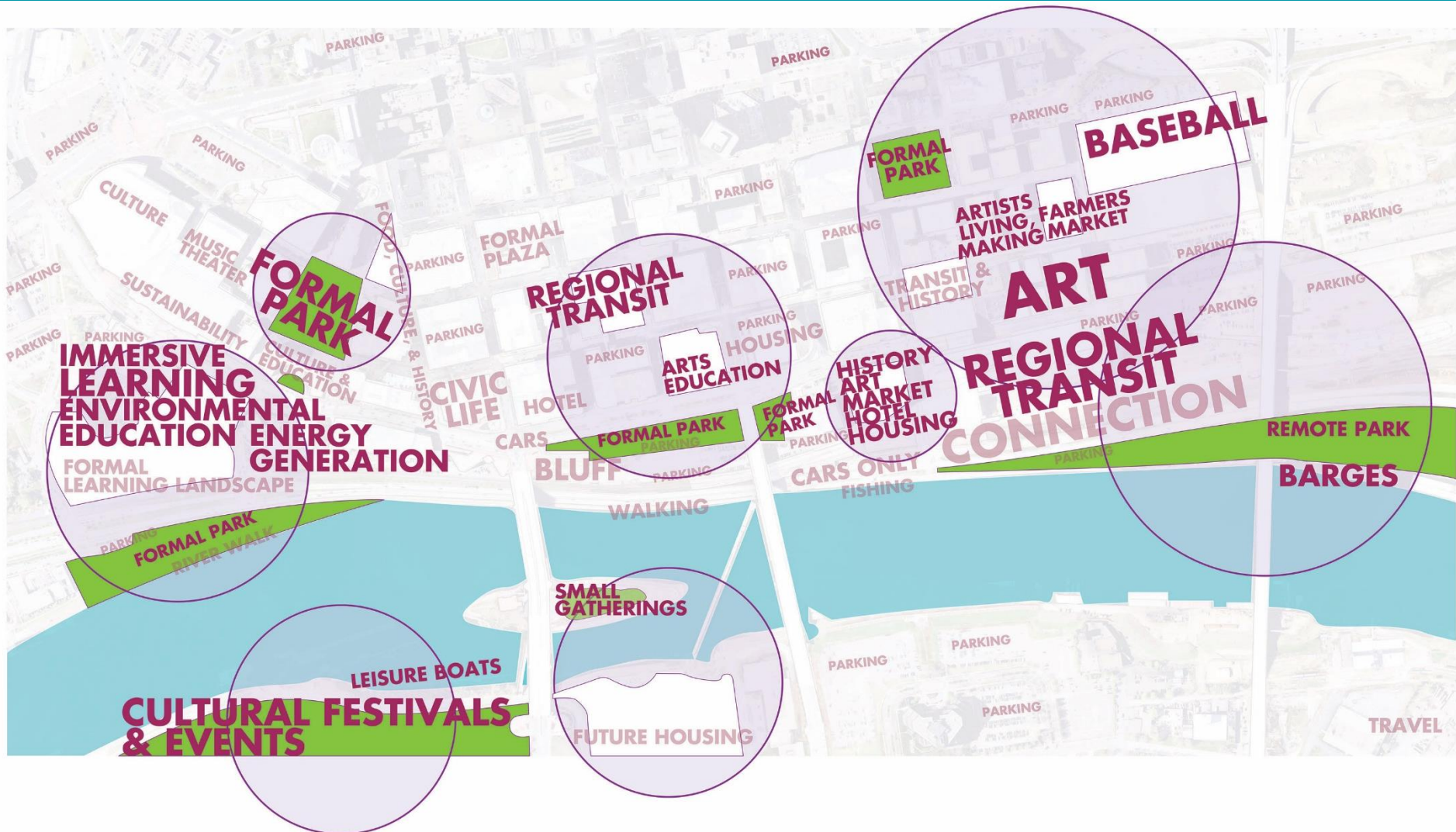
THE CITYDECK  
GREEN BAY, WI  
Designer: STOSS

- 1 Shopko Landing Extending toward Walnut Street
- 2 CityDeck Riverfront Boardwalk
- 3 Open Programming Runs Consistently Throughout the Site



Budget: \$14 million  
Date: 2012

# Study Area : Assets + Destinations





# River Balcony Master Plan : General Design Principles

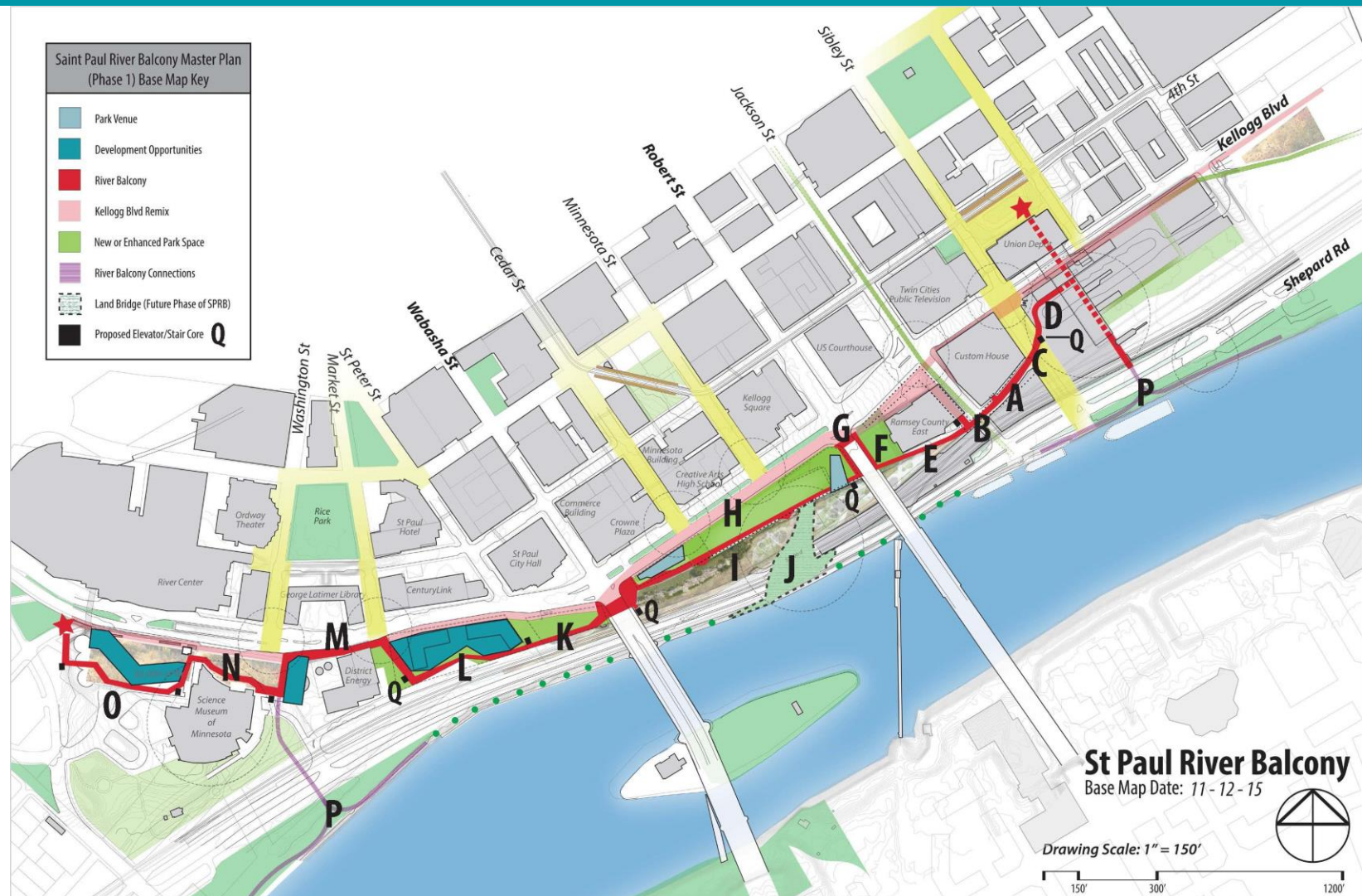
1. **Public space, accessible to all**
2. **Visual and physical connections**
3. **Integral part of a larger public realm network**
4. **Horizontal and vertical movement system**
5. **Fundamental feature of new development**
6. **Adds value**
7. **High-quality, durable materials**
8. **Coherent series of public spaces**
9. **“Light touch”**
10. **Natural features**



# River Balcony Master Plan

Saint Paul River Balcony Master Plan  
(Phase 1) Base Map Key

- Park Venue
- Development Opportunities
- River Balcony
- Kellogg Blvd Remix
- New or Enhanced Park Space
- River Balcony Connections
- Land Bridge (Future Phase of SPRB)
- Proposed Elevator/Stair Core **Q**



**St Paul River Balcony**  
Base Map Date: 11 - 12 - 15

Drawing Scale: 1" = 150'



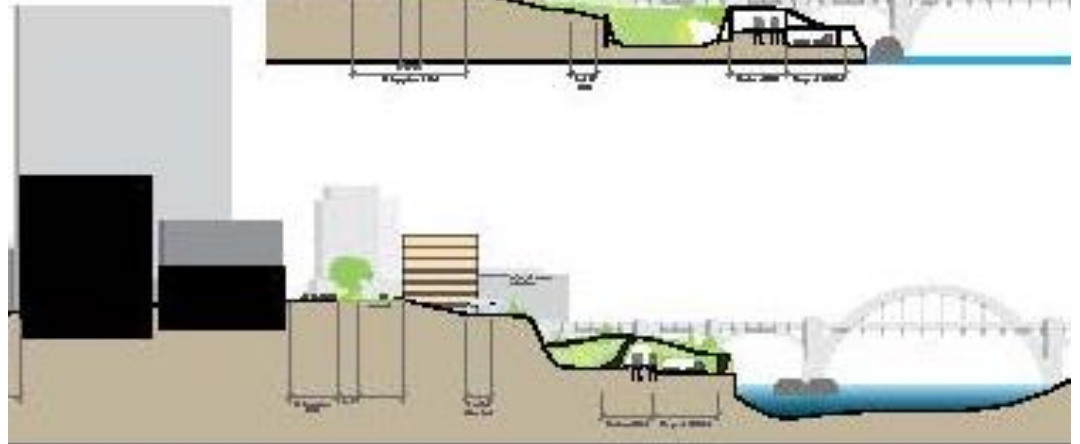
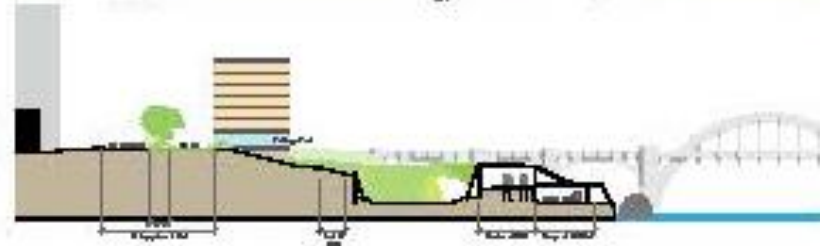
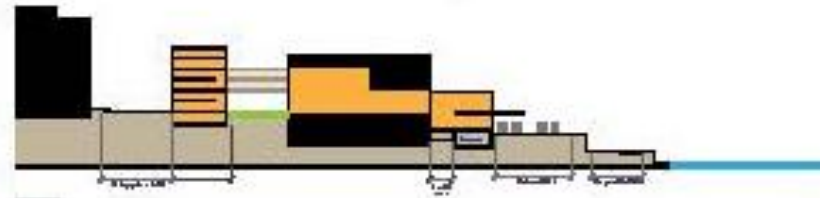
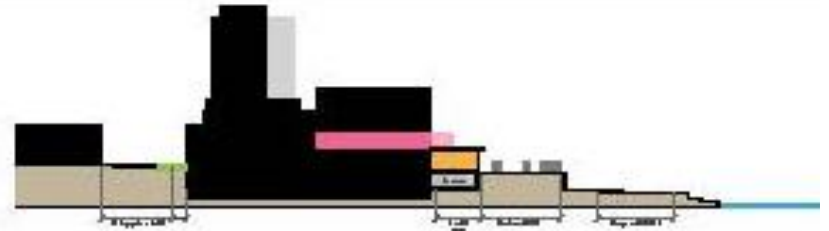
# Design Guidelines

## Public Realm

- \* Identity
- \* Materials
- \* Pedestrian Amenities
- \* Landscaping

## Adjacent Private Development Sites

- \* Sustainability and District Systems
- \* Site Development
- \* Landscaping
- \* Lighting
- \* Building Form, Placement and Façade
- \* Historic Preservation
- \* Furnishings
- \* Views



# Saint Paul River Balcony : Next Steps

**Complete + Adoption of River Balcony Master Plan by City Council**

**3<sup>rd</sup> Quarter 2016**

**Complete Phase One Schematic Design**

**3<sup>rd</sup> Quarter 2016**

**Phase One Design Development**

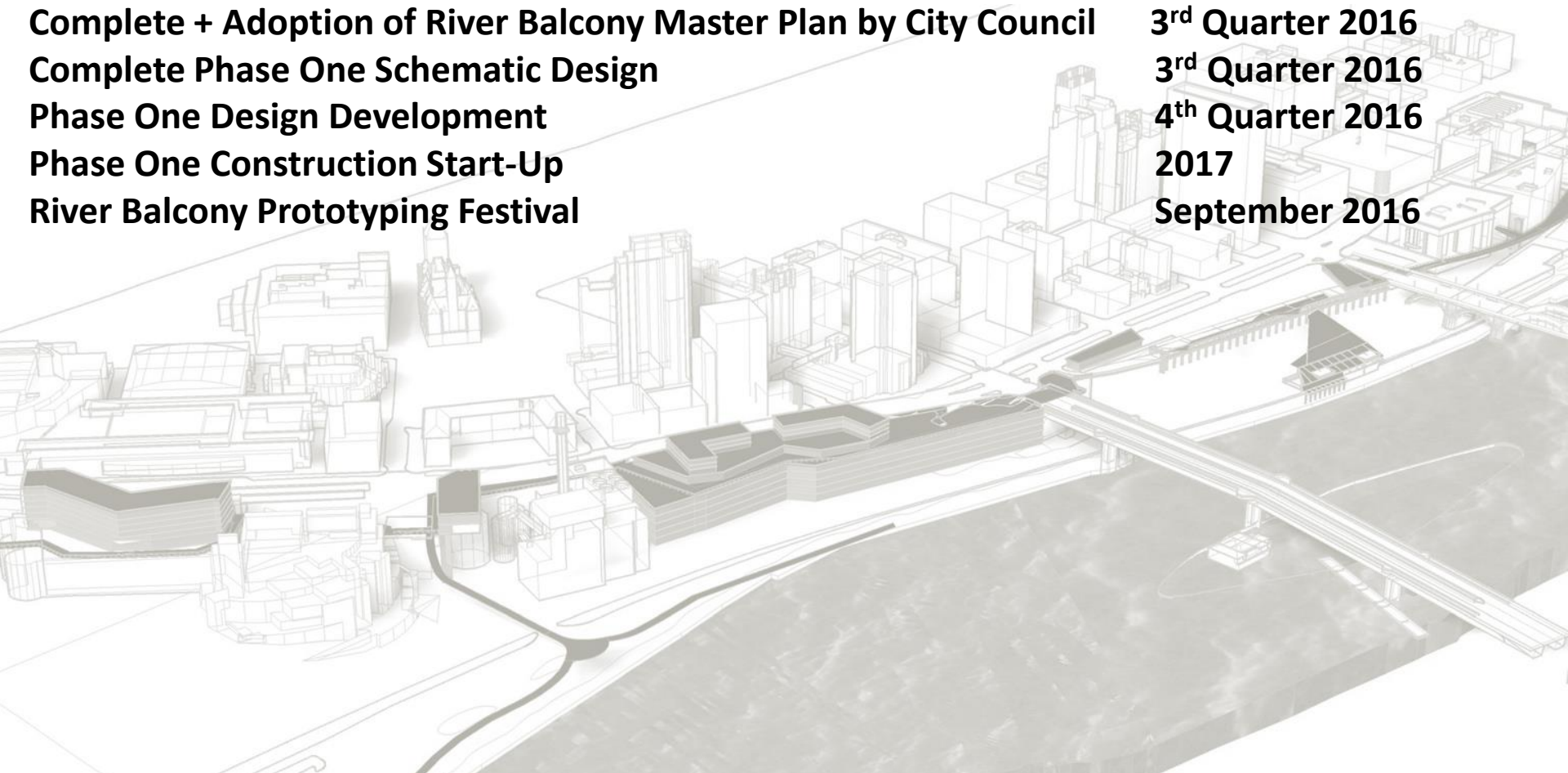
**4<sup>th</sup> Quarter 2016**

**Phase One Construction Start-Up**

**2017**

**River Balcony Prototyping Festival**

**September 2016**



# Saint Paul River Balcony : Contact Information

**[www.stpaul.gov/RiverBalcony](http://www.stpaul.gov/RiverBalcony)**

**Review copies of the Draft Master Plan  
will be available in May 2016.**

**Lucy Thompson  
Principal City Planner**

**[lucy.thompson@ci.stpaul.mn.us](mailto:lucy.thompson@ci.stpaul.mn.us)**

**651-266-6578**