

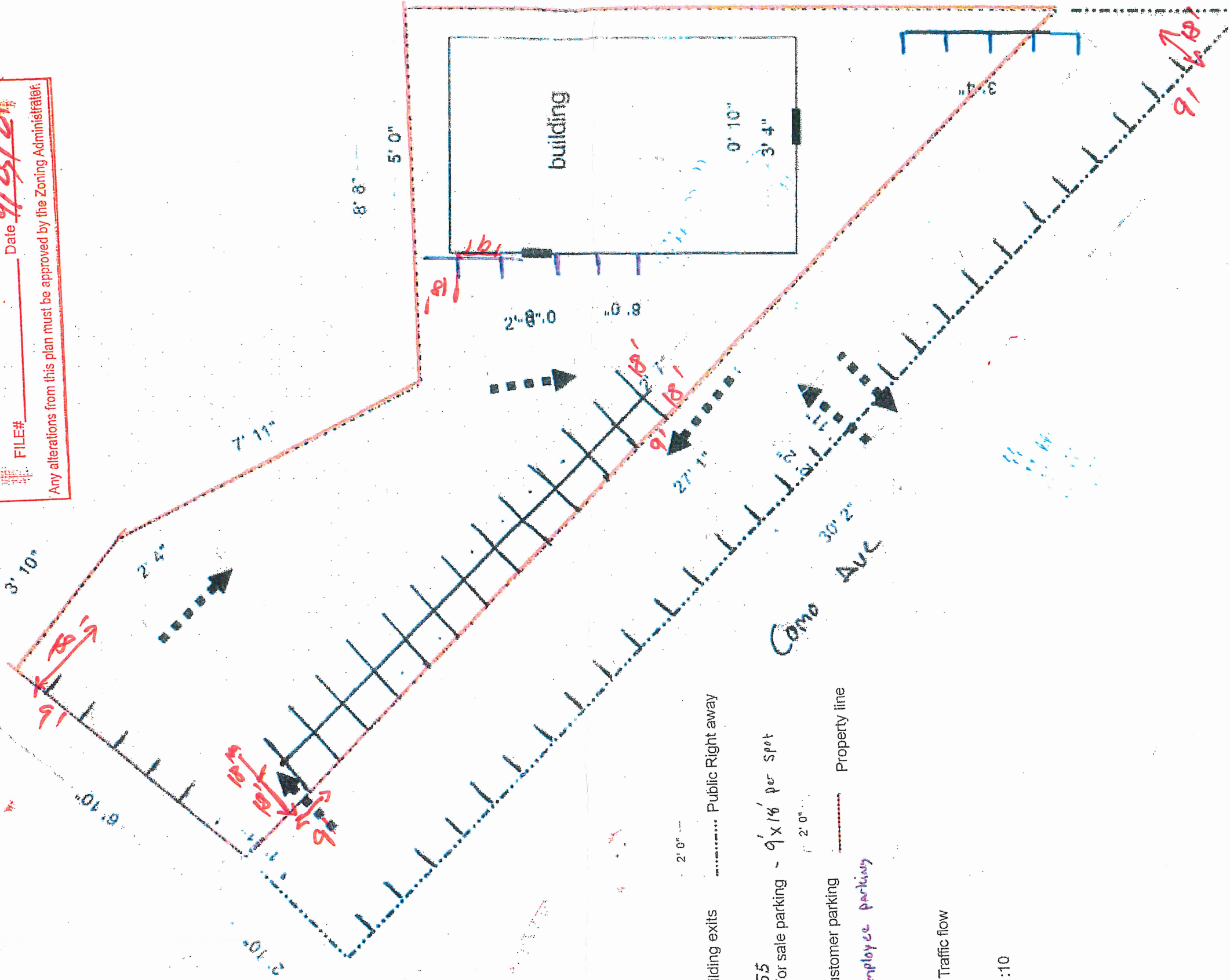
PARKING PLAN APPROVED

CITY OF ST PAUL
Department of Safety and Inspections

BY: Y. DIATTA

FILE# _____ Date 9/23/21

Any alterations from this plan must be approved by the Zoning Administrator.



- 1' 8" Building exits
- 2' 0" Public Right away
- 5.5 For sale parking - 9' x 16' per spot
- 1' 8" Customer parking
- 2' 0" Employee parking
- 2' 0" Property line
- 2' 0" Traffic flow

Scale to fit 1:10