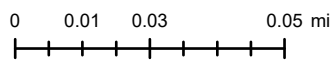
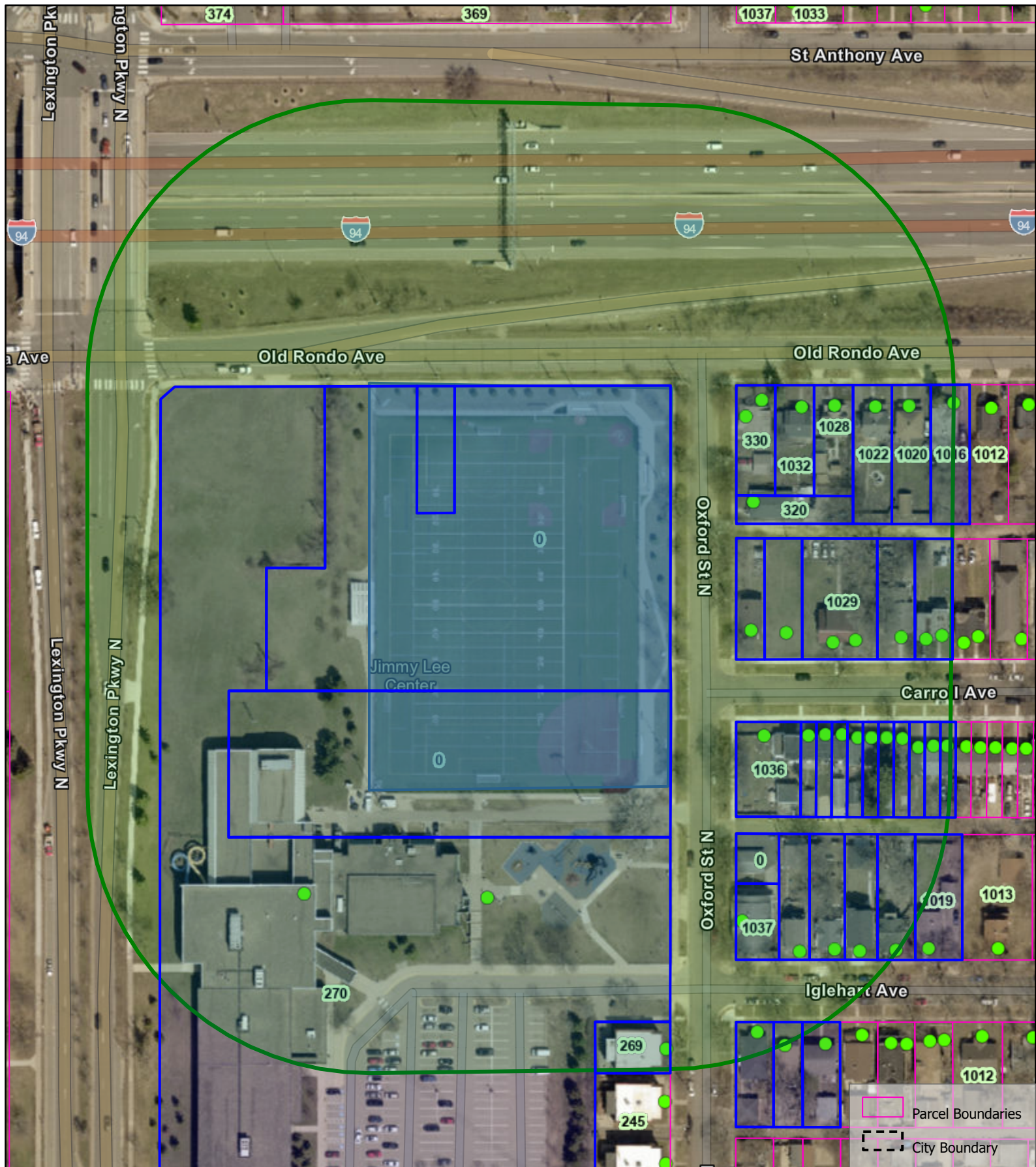


270 Lexington Pkwy North - Eid-al-Adha Muslim Festivals Map 300 ft

5/5/2023 11:41 AM



Sources: Esri, Airbus DS, USGS, NGA, NASA, CGIAR, N Robinson, NCEAS, NLS, OS, NMA, Geodastystyrelsen, Rijkswaterstaat, GSA, Geoland, FEMA, Intermap and the GIS user community, Esri Community Maps

The Geographic Information System (GIS) Data to which this notice is attached are made available pursuant to the Minnesota Government Data Practices Act (Minnesota Statutes Chapter 13). The GIS Data are provided to you "AS IS" and without any warranty as to their performance, merchantability, or fitness for any particular purpose. The GIS Data were developed by the City of Saint Paul for its own internal business purposes. The City of Saint Paul does not represent or warrant that the GIS Data or the data documentation are error-free, complete, current, or accurate. You are responsible for any consequences resulting from your use of the GIS Data or your reliance on the GIS Data. You should consult the data documentation for this particular GIS Data to determine the limitations of the GIS Data and the precision with which the GIS Data may depict distance, direction, location, or other geographic features. If you transmit or provide the GIS Data (or any portion of it) to another user, the GIS Data must include a copy of this disclaimer.