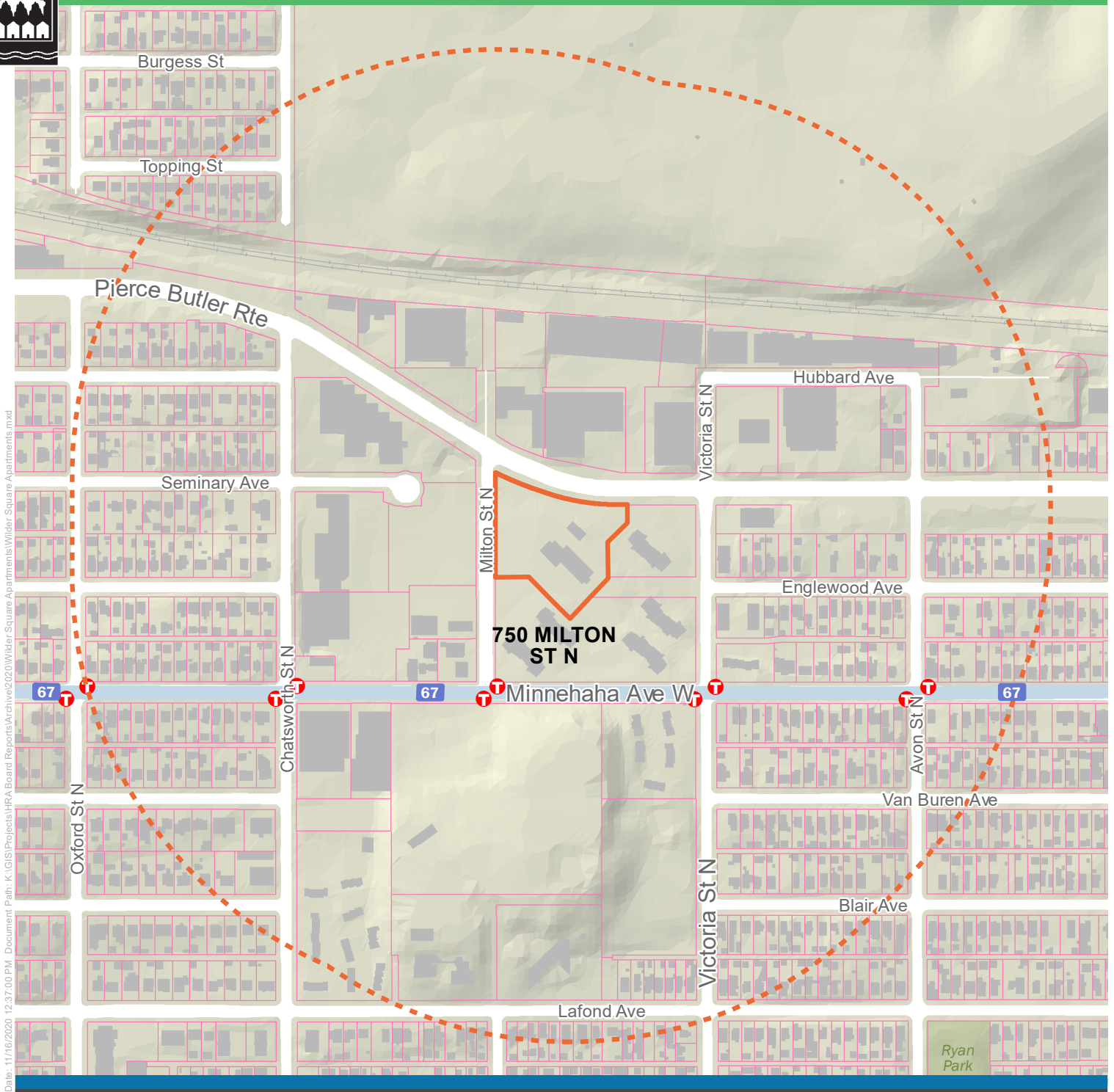









# Saint Paul Housing & Redevelopment Authority Wilder Square Apartments



Date: 11/16/2020 12:37:00 PM Document Path: K:\GIS\Projects\HRA Board Reports\Archive\2020\Wilder Square Apartments\Wilder Square Apartments.mxd



-  Bus Routes
-  Bus Stops
-  Parcels
-  Subject Parcel
-  Quarter Mile Distance

This document was prepared by the Saint Paul Planning and Economic Development Department and is intended to be used for reference and illustrative purposes only. This drawing is not a legally recorded plan, survey, official tax map or engineering schematic and is not intended to be used as such. Data sources: City of Saint Paul (Parks, Street Centerlines, Libraries, Rec Centers); Ramsey County (Street Outlines, Building Footprints, Parcels); Minnesota Geospatial Commons (Hydrography, Highways, Transit Lines and Stops, and Topography)

