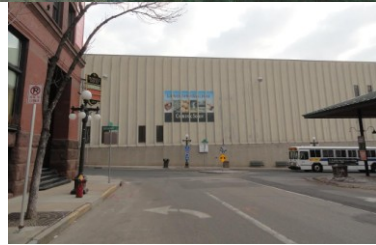
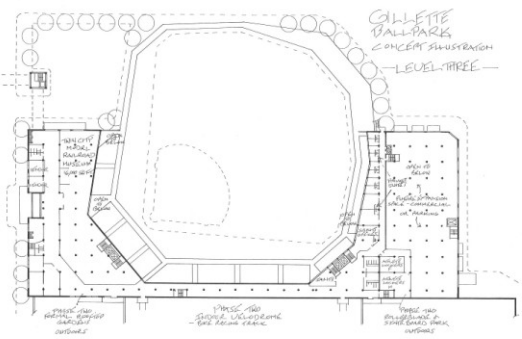
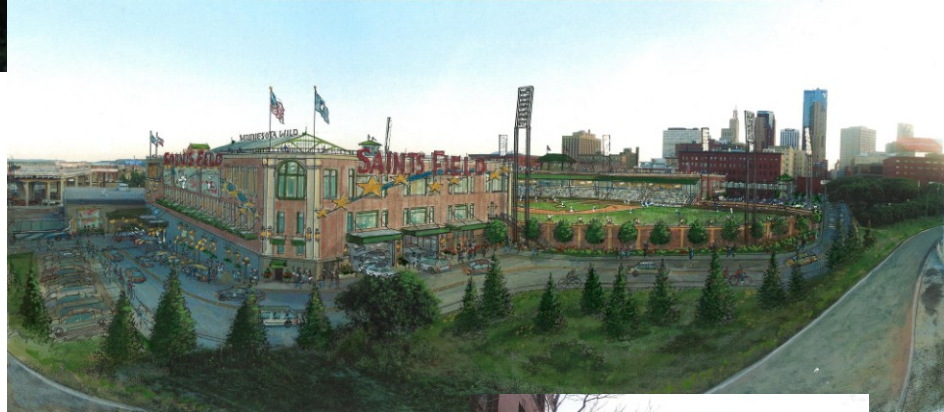
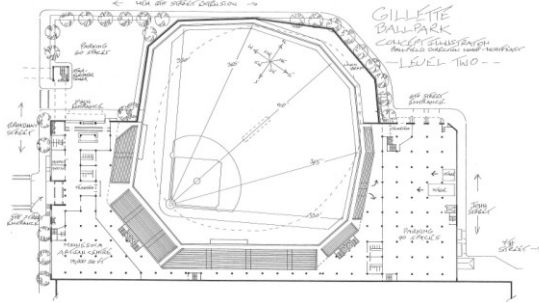
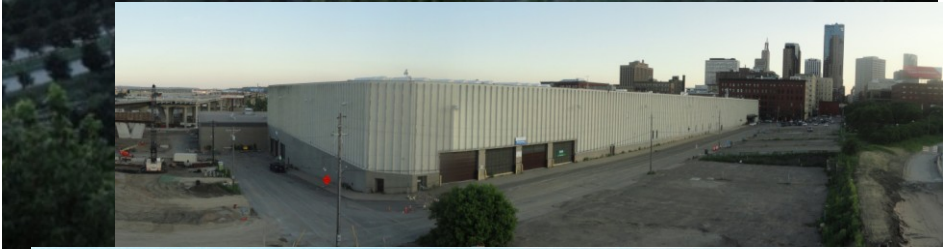
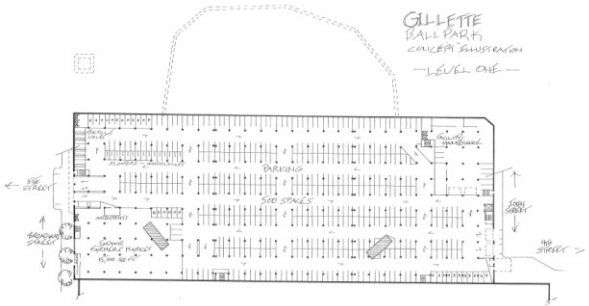


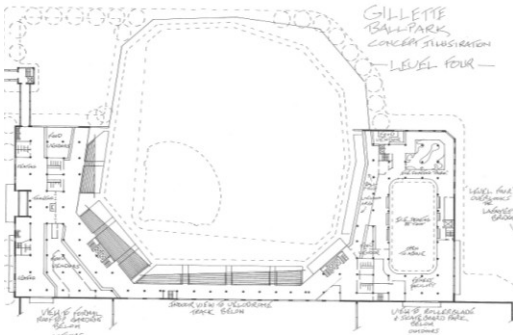
Saint Paul once almost lost a building that later became Landmark Center. Today, Saint Paul is about to lose another building and opportunity few cities will ever have...

We can repurpose rather than destroy the Gillette Building on the Regional Ballpark site for the same \$54 million in the city's original ballpark budget and in turn create something unique in America.

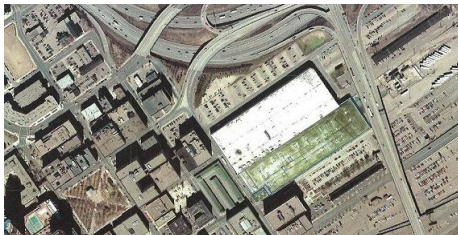
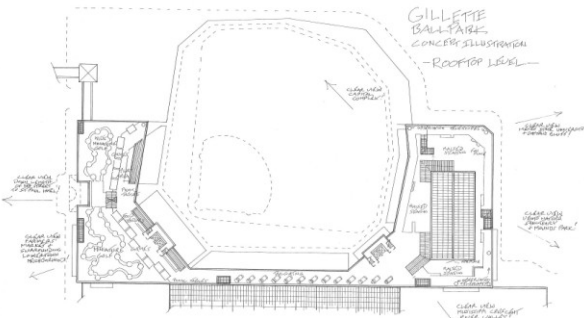


L: Minute-Maid Field - Houston.
R: The Holiday Inn near XCEL Center once looked like Gillette's off-spring...

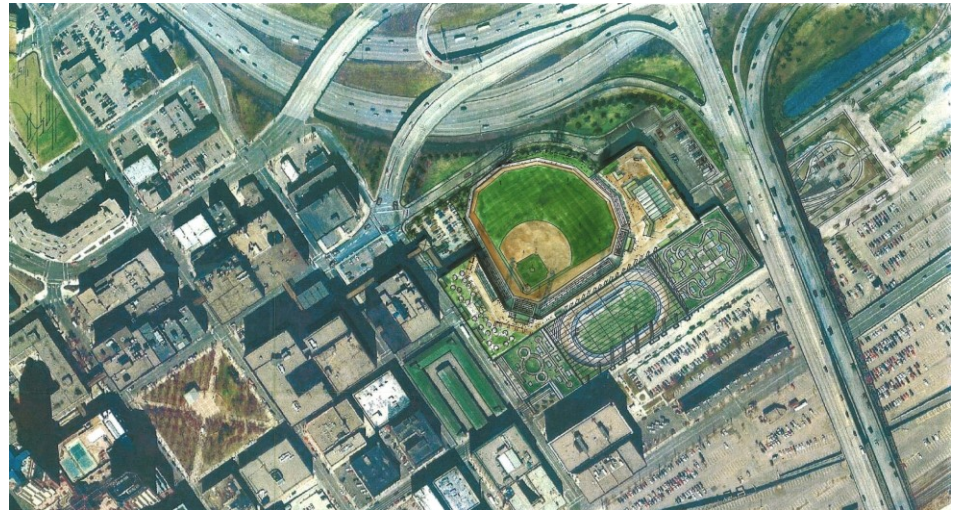




In 2015, Saint Paul can have a ballpark that will be a 'Destination Center' 365 days a year!



In Order: Current site, preliminary City ballpark plan, first Gillette ballpark plan, revised Gillette ballpark plan.



Gillette outperforms the City's ballpark plan and brings more benefits to Saint Paul:

- Creates 650 on-site parking spaces and large indoor market area!
- The massive Gillette Building is a freeway sound barrier - remove it and traffic noise **will** flow into the heart of the Lowertown neighborhood
- Creates the largest, most complete 'Artisan Centre' in the Midwest!
- Creates a permanent home for the beloved 'Twin City Model Railroad Museum'!
Let's bring them back home to Lowertown from Bandana Square.
- Saint Paul becomes the cycling center for the Midwest with a Phase-2 rooftop Velodrome.
- The Gillette ballpark doubles as the large amphitheatre the Twin Cities metro area is missing.
- Provides superior amenities and a massive roof-top event space offering unsurpassed views!

The City's plan offers views of Lafayette Bridge's underside and the back-side of the LRT maintenance barn!

